

Interested in becoming a sponsor?

Sponsorship details, perks, and application all available at  
[georginarollerderby.com](http://georginarollerderby.com)

GEORGINA ROLLER DERBY Presents:



Game 1 @ 4pm



VS



Game 2 @ 6pm

BEGINNER/INTERMEDIATE SCRIMMAGE



# Roller Derby Basics

Flat track roller derby is a fast-paced, full-contact sport played on an oval flat track, where two teams of skaters compete in short "jams" to score points by having their designated scorer, the jammer, lap members of the opposing team while teammates play offense and defense simultaneously. The modern revival began in the early 2000s in Austin, Texas, led by a grassroots movement of women seeking a DIY, punk-inspired alternative sport. Since then, it has grown into a global phenomenon with thousands of amateur leagues around the world, governed by organizations like the Women's Flat Track Derby Association (WFTDA), emphasizing athleticism, inclusivity, and empowerment.



Two 15-skater teams play two 30-minute periods. Each period consists of multiple "jams." Each jam is an opportunity for both teams to score points, and ends after 2 minutes or when the Lead Jammer calls off the jam. It is legal for a skater to block opponents with their hips, rear, and shoulders. It is not legal to block to the back, to trip, elbow, or to back talk officials. Players committing illegal actions are penalized 30 seconds and their team plays short for that time.



## JAMMER

Jammers wear a star on their helmets and are the scoring players for each team. The Jammers attempt to pass the opponents as many times as possible by sprinting around the track and lapping the pack.



## BLOCKER

The Blockers are simultaneously focused on stopping the opposing Jammer from passing them and assisting their Jammer to pass the opposing team's Blockers. The pack is formed by the largest group of Blockers with players from each team on the track.



## PIVOT

The Pivot is the Blocker that wears the stripe on their head. They are the only Blocker that is allowed to accept a star pass from the Jammer, thus becoming the new Jammer and gaining the ability to score points.

## JAM START

Each team fields 4 Blockers and 1 Jammer. Blockers start anywhere between the Jammer Line and the Pivot Line, 30 feet (9.15 meters) away. Jammers start behind the Jammer Line. Play starts with a single whistle blast.

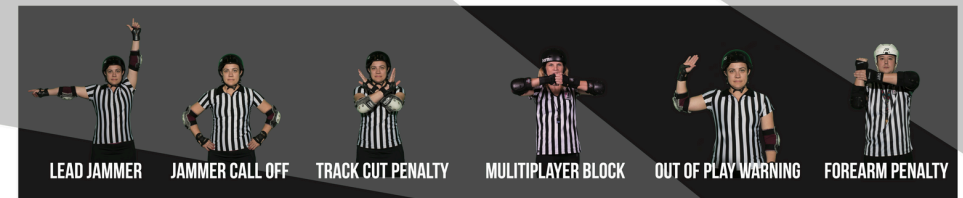
## FIRST PASS

During the first pass, the first Jammer to pass all skaters in the pack legally is Lead Jammer. Lead Jammer status is signaled by the officials blowing two short whistle blasts and pointing at the Lead Jammer.

## SECOND PASS

In subsequent passes, Jammers earn 1 point for each opposing player they pass legally. The opposing Blockers will try to stop the Jammer, while helping their own Jammer through the pack.

## KEY OFFICIATING SIGNALS



©2018 Women's Flat Track Derby Association (WFTDA)

## ABOUT WFTDA

The Women's Flat Track Derby Association (WFTDA) is the international governing body of roller derby representing more than 450 member leagues on 6 continents. The mission of the WFTDA is to govern and promote the sport of flat track roller derby and revolutionize the role of women in sports through the collective voice of its member leagues around the world. The WFTDA sets the international standards for rankings, rules, and competition each year and provides guidance and resources to the sport of flat track derby.

[WFTDA.COM/NEW](http://WFTDA.COM/NEW)





# Game 1 @ 4pm



JAMuary #10

Trouble #1111

Rock'em Sock'em #13

Pretty Fly #1331

Brutal Bambi #1942

Keri Daway #42

Splattin'Em Blonde #53

Miss Chief #534

Vermicious Knid #56

Somthing Wicked #69

Gunn A Getcha #79

Junebug #81

Kateastrophy #900

Bruise Cruise #96

## BENCH STAFF

Patches O'Houlihan

Jay-Quellin

# VS



Cherry Bomb #0260

Bad D'cisions #03

Glitch #1013

Hollysized Hellion #104

Baby Shark #111

Dutch Blitz #1111

Wicked Wentch #1217

Marie Fury #314

Miss Terplow #42

AK #47

Riot Rhythym # 524

Hippie Check #6260

Armbreaker #713

Spinelli #89

Punisher #99

## BENCH STAFF

Pain Killer Jane

Slam Wow







# GEORGINA ROLLER DERBY 2025



**Georgina Roller Derby League was formed in 2019 and is professionally run by passionate skaters for the skaters.**

**Our mission is to crush stereotypes by showcasing the strength of women both on and off the track.**

**We strive to provide a welcoming, inclusive, and supportive space for women of all skill levels, ages, and abilities.**



PATCHES O'HOULIHAN - COACH



MAGOO - COACH



Q - HEAD REF



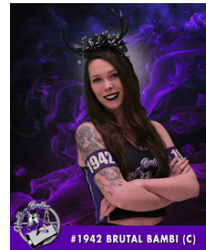
JEN EH SAIS QUOIS



SAILOR BOOM - HEAD NSO



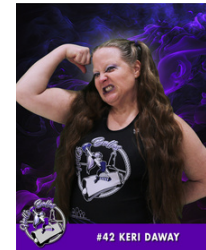
#1331 PRETTY FLY (C)



#1942 BRUTAL BAMBI (C)



#1023 ANXIETY ATTACKS



#42 KERI DAWAY



#504 DOOM KITTY



#53 SPLATTIN' EM BLONDE



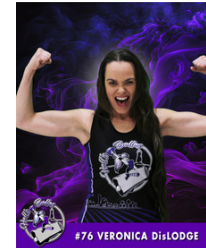
#7 BETTY FIGHT



#96 BRUISE CRUISE



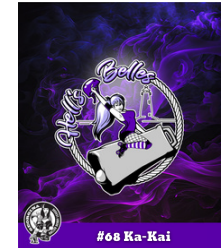
#79 GUNN A GETCHA



#76 VERONICA DISLODGE



#47 AMINO LADY



#68 KA-KAI



#333 LIL PAIN



#0024 MELZERS



#2007 TANATELLO



#32 ANGELA SLAMSBURY



CEPHALO-PANIC



#61 JUNE BUG

## Scrimmage vs Bout...

### What is the difference?



A derby scrimmage is a structured practice game that mirrors real play, giving players the chance to apply strategies, build teamwork, and gain experience. Teams are created by mixing skaters from different leagues.

A derby bout is the official competition that counts towards rankings and league records.

Scrimmages are essential for preparation and growth, while bouts are the formal test of those skills.

# Bar



Bar open all night! From the first whistle to the final jam, the fun never stops! Make sure to grab raffle tickets while you're there!

After party at The Mansion House.  
129 High St, Sutton West



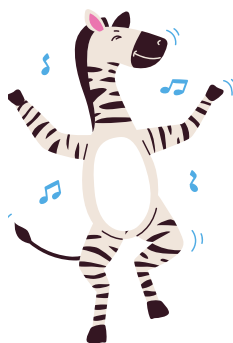


# VOLUNTEERS

In roller derby, referees and non-skating officials (NSOs) are essential for gameplay. Referees, often called "zebras", ensure rules are followed, while NSOs, sometimes called "flamingos", manage scoring, timing, and penalties. Both groups are vital for a smooth and fair game. All referees and NSOs are unpaid volunteers, travelling from near and far, simply for the love of the sport! Additionally, more volunteers are needed to set-up, run the front entry, announce the game, assist with safety, and act as security. Hell's Belles skaters help out where they can before and after they put on their skates, but it takes a lot of people running the show to make playing in a game possible for our Hell's Belles skaters.

Thank you to all our volunteers, both on wheels, trackside, and around the venue making everything happen so that we can have a fun day of derby.

We couldn't do what we do without you!



# CHECK OUT OUR VENDORS



THEFRAZZLEDRECKS



For The Love of Spice!  
With Leah



Leah Sheridan  
aspiceaffair.com/ESA-LEAH-S  
289-338-2377  
sheridan151523@gmail.com  
A Spice Affair..



....and more!