



**STAGE** 

**DYNA  STAGE<sup>®</sup>**

**Quick Specs**

**Model 32 24 15**



*Outdoor events are very classy, when using a Dynastage 32 24 15 mobile stage*





*Our Dynastage 32 24 15 mobile stages are found all across Canada. This Mega-Stage product was photographed in Nova-Scotia during a provincial exhibition.*

## Contents

<i>Technical specifications</i>	<i>Page 1</i>
<i>Rigging Plan</i>	<i>Page 2</i>
<i>Side view</i>	<i>Page 3</i>
<i>Front view</i>	<i>Page 4</i>
<i>Stage floor</i>	<i>Page 5</i>
<i>Trailer</i>	<i>Page 6</i>





**Trailer**

Width	8' - 6" or 2,59 m
Length	35' - 8" or 10,87 m **
Height	13' - 6" or 4,11 m
Nominal gross vehicle weight	27 960 lbs or 12 682 kg
Static load on axle(s)	20 200 lbs or 9 163 kg
Maximum load on axles	20 280 lbs or 9 199 kg
Cargo space	5' - 8" x 9' - 2" x 32' - 0" (1 662 ft <sup>3</sup> ) 1,73 m x 2,79 m x 9,75 m (47,06 m <sup>3</sup> )

**Overall dimensions (stage)**

Depth	26' - 0" (32' - 0" with FOH) 7,93 m (9,75 m with FOH)
Width	34' - 3" (46' - 3" with PA wings) 10,44 m (14,1 with PA wings)
Height	22' - 10" to 24' - 2" (28'-2" with banners) 6,96 m to 7,37 m (8,58 m with banners)

**Stage dimensions**

Floor dimensions	32' - 0" x 24' - 4" 9,75 m x 7,42 m
Ground to floor height	5' - 0" to 7' - 0" 1,52 m to 2,13 m
Clearance under trussing	19' - 9" or 6,02 m
Clearance under roof	21' - 6" or 6,55 m

**Other specifications**

Floor materials	Plywood over steel
Load bearing capacity of the floor	150 lbs per ft <sup>2</sup> (7,2 kpa or 732 kg/m <sup>2</sup> )
Roof materials	Fiberglass bonded to steel structure
Front of house (FOH) supports dimensions	6' - 0" or 1,83 m
PA wings dimensions	6' - 0" or 1,83 m
Hanging pipes	Six (6) industry-standard 2" (50,8 mm) nominal diameter

Maximum load bearing : Roof	20 000 lbs* or 9 072 kg
Maximum load bearing : FOH supports	750 lbs* or 340,2 kg
Maximum load bearing : Inside supports	500 lbs* or 226,8 kg
Maximum load bearing : PA wings	2 000 lbs * or 907 kg
Maximum load bearing : Center truss	5 000 lbs * or 2 268 kg
Maximum load bearing : End truss	3 500 lbs* or 1 588 kg

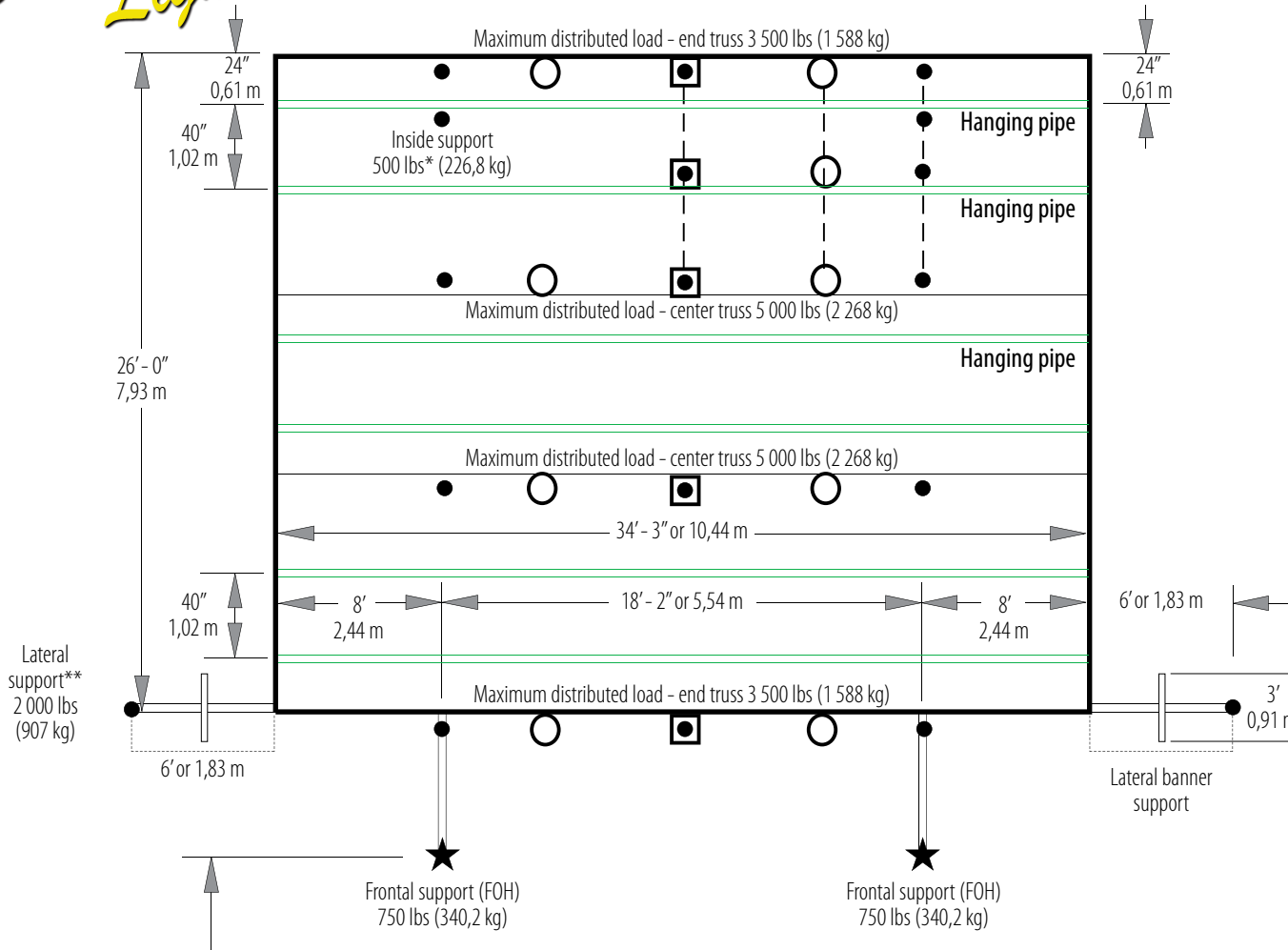
Wind resistance	60 mph (100 km/h) with wind screens
Wind lift resistance	15 lbs per square inch (73,2 kg/m <sup>3</sup> )

Motor	6,5 HP fuel powered Honda GX200
Install time	1 hour - 2 technicians
Transport	Tractor trailer or truck with construction hook
Wind screen (sides and back)	Black 16oz. Vinagard
Wind screen openings (doors)	One 6' x 8' (1,83 m x 2,44 m) and two 5' x 8' (1,52 m x 2,44 m)
Wind screen openings (wind flaps)	Three 6' x 3' (1,83 m x 0,91 m) and two 5' x 3' (1,52 m x 0,91 m)
Stage skirt	Black Novathene TG
Stairs	44" (1,12 m) wide with handrails

\* Refer to rigging plan

\*\* Including retractable drawbar 10'-3" (3,12 m)

All dimensions and specifications are subject to change without prior notice



**Maximum load**

17 000 lbs or 7 711 kg

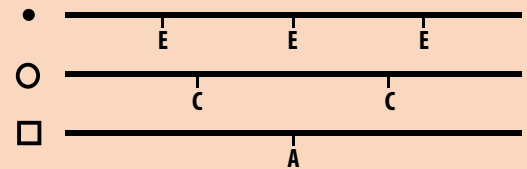
**Distribution**

A: 2 500 lbs or 1 134 kg  
 B: 1 750 lbs or 794 kg  
 C: 1 875 lbs or 850,5 kg

D: 1 300 lbs or 590 kg  
 E: 1 250 lbs or 567 kg  
 F: 875 lbs or 397 kg  
 G: 750 lbs or 340,2 kg

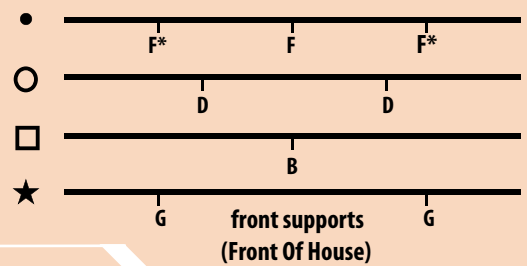
**Center truss**

1 of the 3 following setups



**End truss**

1 of the 4 following setups

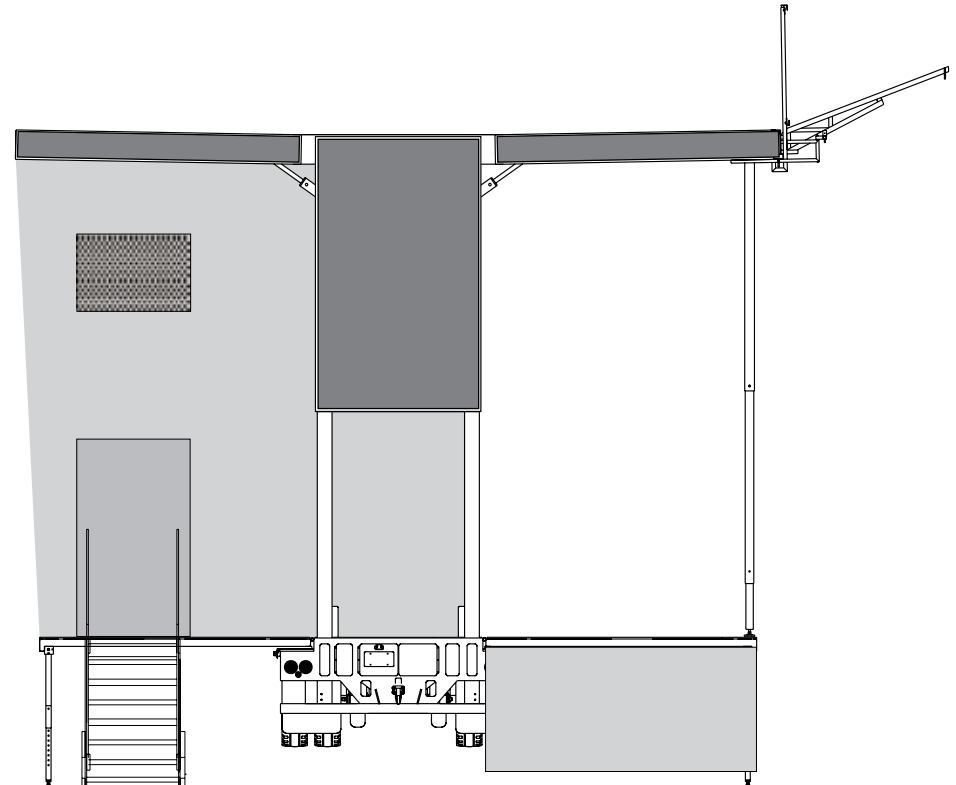
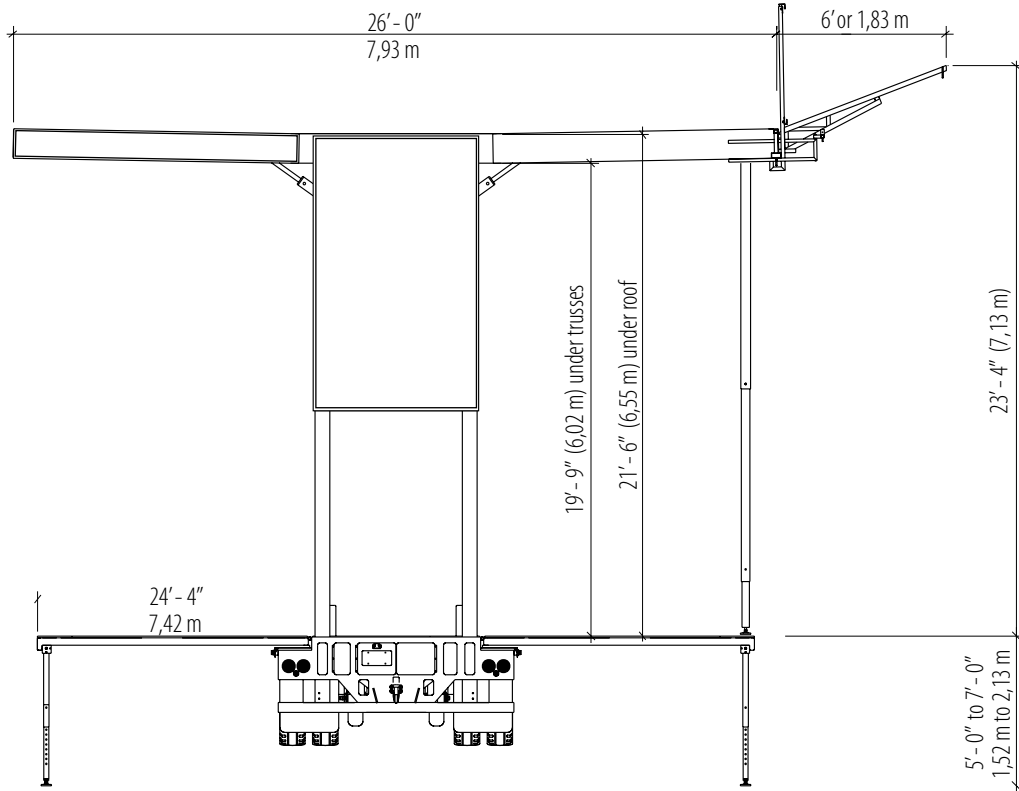


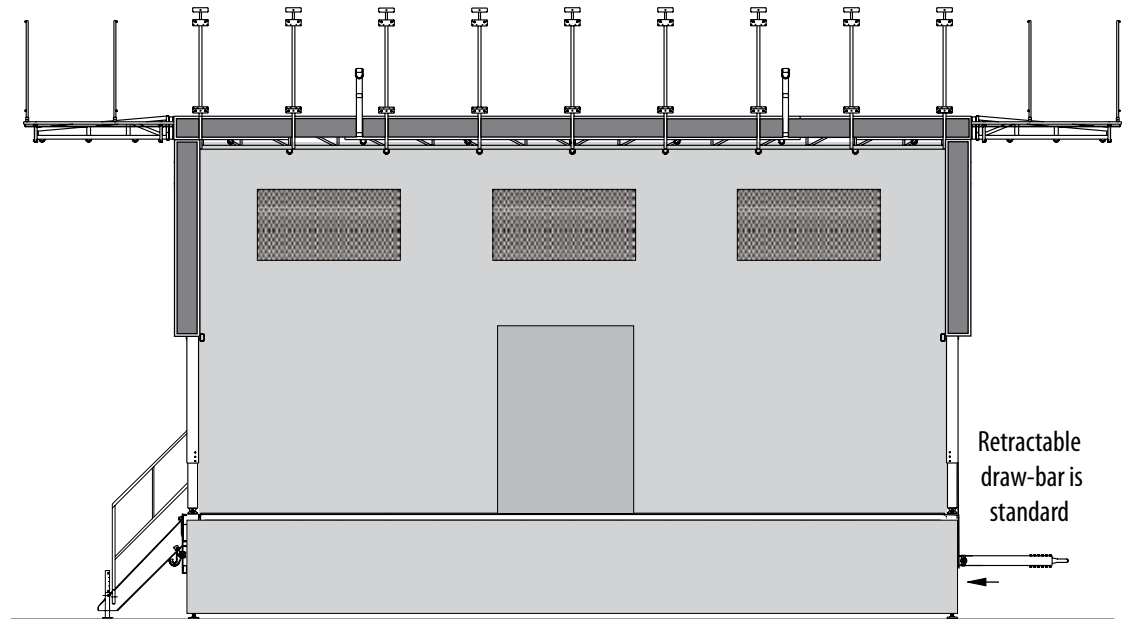
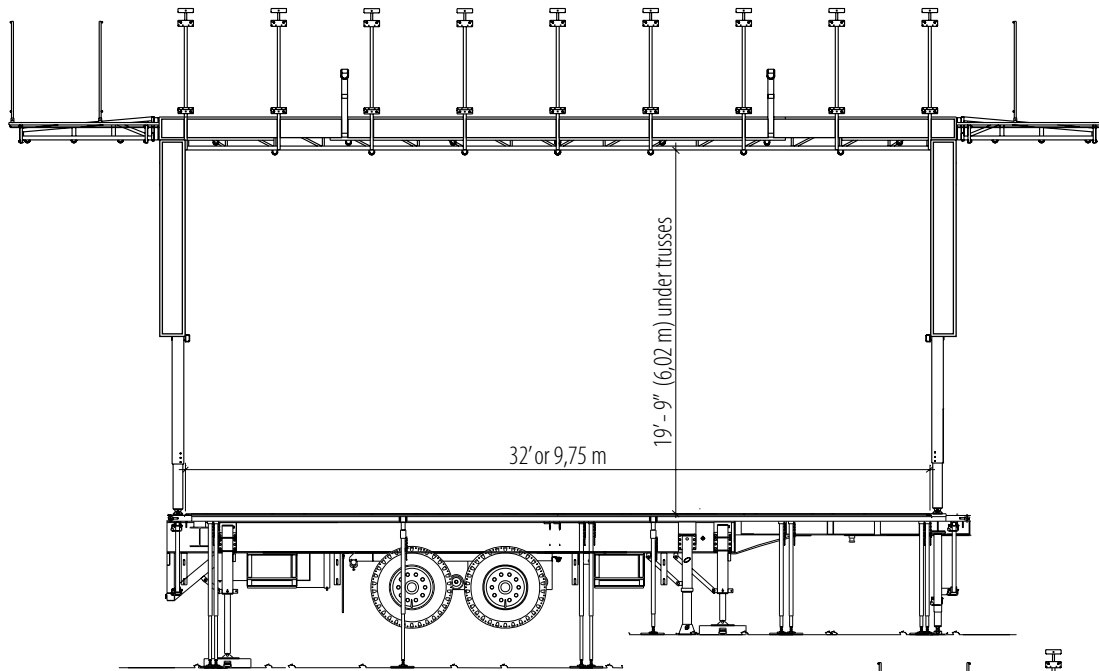
**Movable supports**

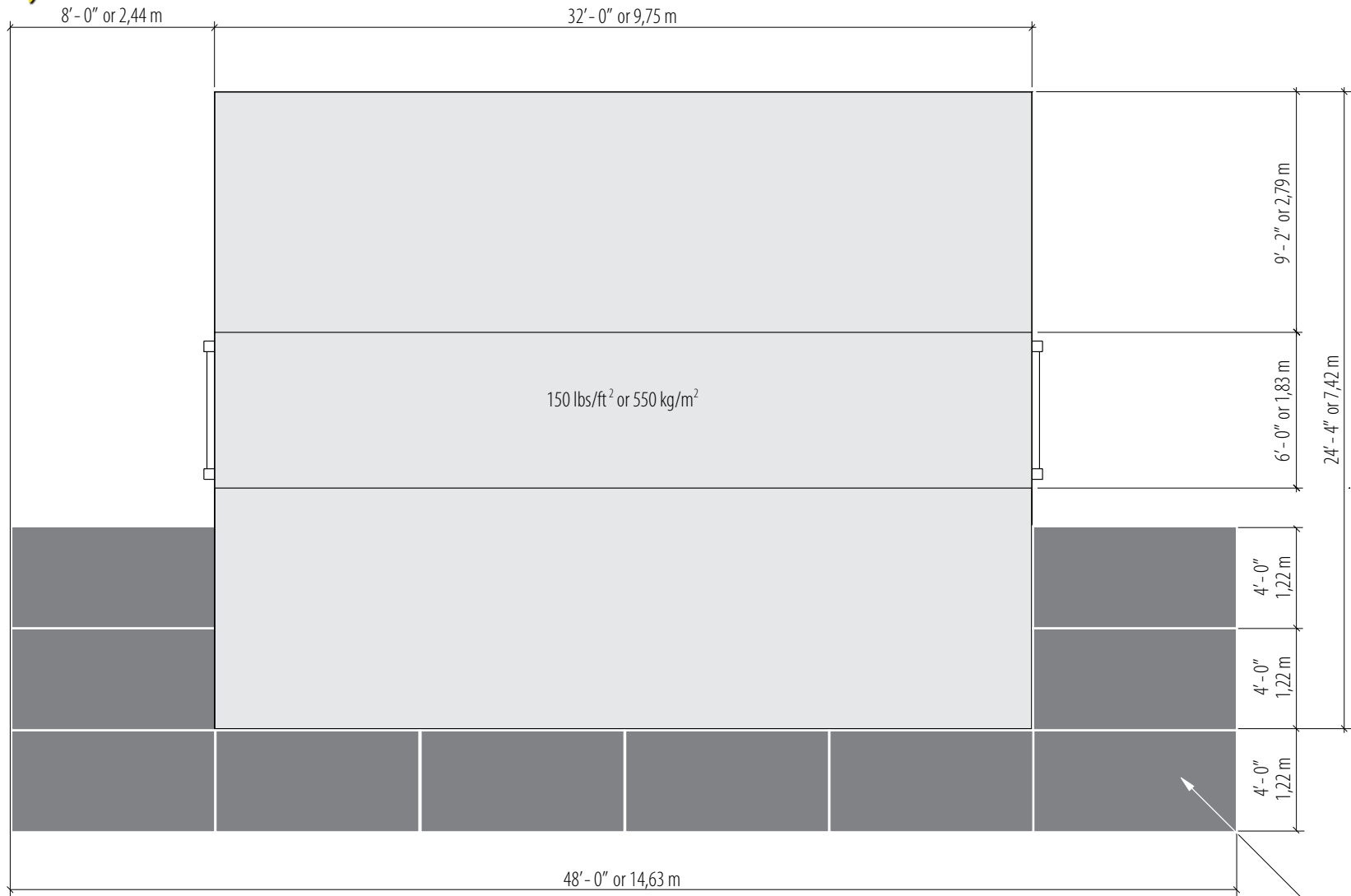
- 2 000 lbs or 907 kg
- 1 500 lbs or 680 kg
- 1 000 lbs or 453,6 kg

**Notes**

- \* Inside supports replace corresponding rigging points
- \*\* PA wings may be used with any rigging combination







Optional extensions  
4'-0" x 8'-0"  
1,22 m x 2,44 m





DYNA  STAGE<sup>®</sup>

Model 32 24 15

**3L Sound & Lighting**  
905-238-8949 or 1 800 567-7654  
info@3Lsound.com  
www.3Lsound.com