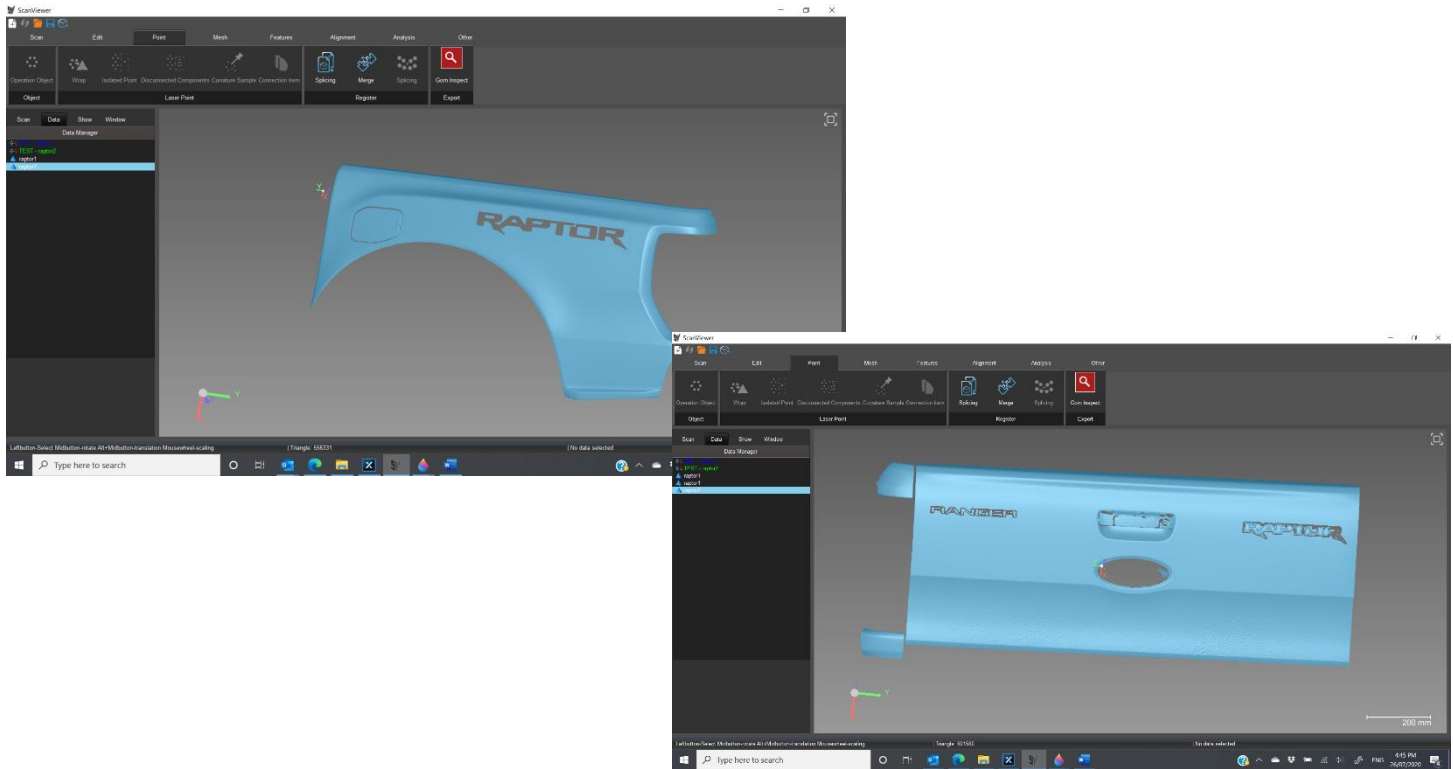


# ScanViewer – Merge Scans

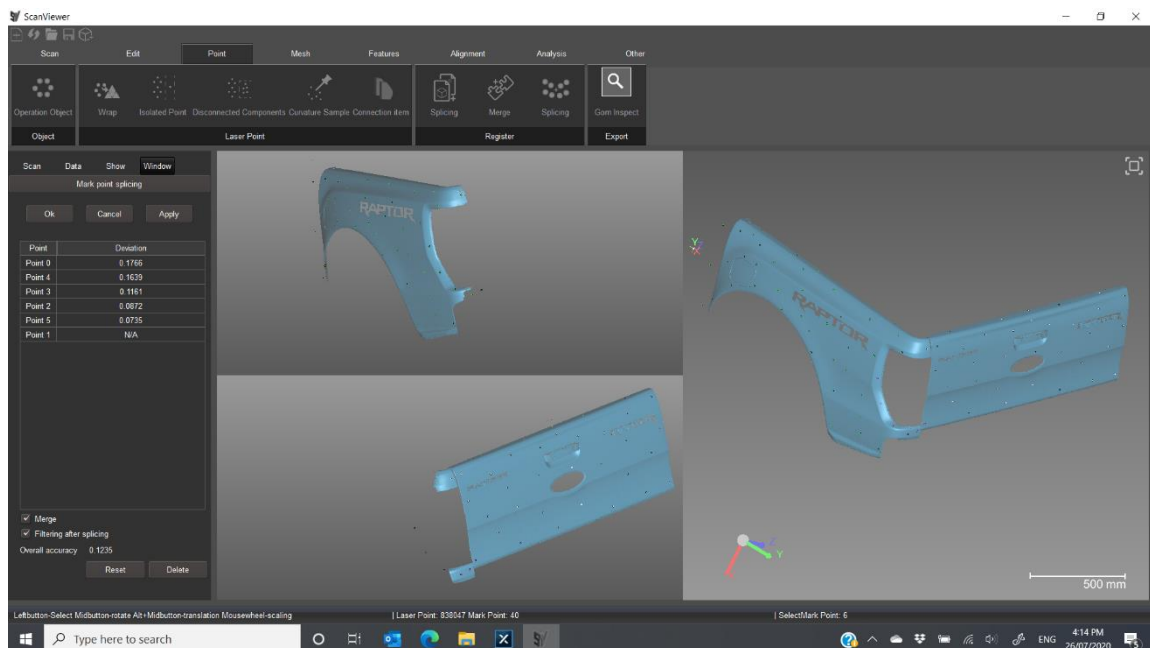
**STEP 1: Scan vehicle panels in 2 sections (rear / side)**



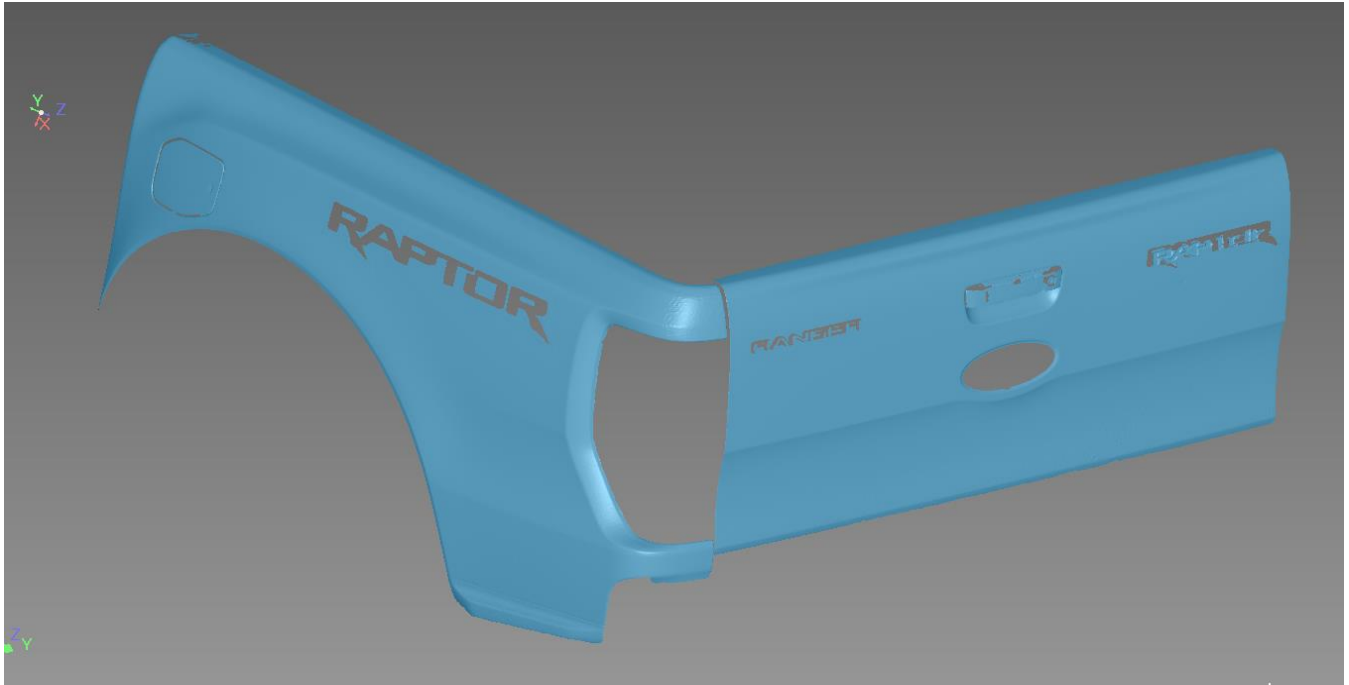
## STEP 2: Import both scans into ScanViewer session



## STEP 3: Use Splice Function to merge scans together



### STEP 4: Process resulting scan into Mesh file



### STEP 4: Export to 3<sup>rd</sup> party 3D software

