



COPMEA Municipals

Volume 89 Issue 33 Newsletter January through March 2018

COPMEA OFFICERS

Lina Cruz, President
Connie Cordova, Vice President
Anna Martinez, Treasurer
Dora Garcia, Recording Secretary

COPMEA DIRECTORS

Gabriel Bernal, Ray Yocopis,
Dianna Manning,
Vivian Sotelo, Olga Soto,
Johnny Mendoza &
Anamaria Quintanilla

Parliamentarian, Larry Felix

OFFICE STAFF

Barbara Shrum (barbara.shrum@copmea.com)
Alexies Barraza (alexies.barraza@copmea.com)

MEMBERSHIP RATES

Single \$4
Family \$8

ASSOCIATE MEMBERSHIPS

Single \$48 per year
Family \$96 per year

OFFICE INFORMATION

Monday: 1 p.m. to 5 p.m.
Tuesday-Friday: 8 a.m. to 5 p.m.

General E-Mail Address

copmea@copmea.com

Web Site

COPMEA.COM

Telephone: 602-262-6857

Fax: 602-534-1964

COPMEA MUNICIPALS (USPS 922-880) is published quarterly for \$6 per year by the City of Phoenix Municipal Employees Association, 251 West Washington Street, Calvin C. Goode Building, Mezzanine, Phoenix, AZ 85003-2245 (602) 262-6857

Like us on Facebook



Best wishes for a very happy retirement Chris Goldberg!

You will be missed, but never forgotten. To say you will be missed seems like such an understatement. You are one of those rare people who instantly became a friend. There are no words to truly reflect how much we will miss working with you. For over 33 years, you were the friendly face that greeted and devotedly served the COPMEA organization and its countless associates and board members.

You made us feel welcome and you graciously treated us like family. It has been an honor and a privilege to work with you. It's clear that you were dedicated to our customers. Your service truly made a long-lasting memorable impression. Thank you for all your years of service and for all you did for us at COPMEA.

May your retirement bring more wonderful and joyous times with your family and friends. You deserve it. COPMEA loves you Chris and you will always be welcome at the COPMEA Office and please visit anytime.

Enjoy your retirement!

Yours truly, COPMEA Board, Office Staff and Members

Join COPMEA for membership meetings

To socialize, enjoy a light dinner, free BINGO and your chance to win a door prize.

Washington Activity Center

2240 West Citrus Way
Phoenix, Arizona 85015
5:30 p.m.

Future Meeting Dates

3 / 20 / 2018

5 / 15 / 2018

9 / 18 / 2018

10 / 16 / 2018

11 / 20 / 2018

12 / 18 / 2018



**Mark
Your
Calendar**



Big Surf Water Park
1500 N. McClintock Dr.
Tempe, AZ 85281
June 9, 2018
3:00 pm - 10:00pm
Night Swimming

Exclusive – Not Open to Public
Music, Food, Cash Bar
All you can eat
hamburgers, hot dogs, baked
beans, potato chips, potato salad,
cookies, soft drinks, and water

**COPMEA Spends Labor Day Weekend
in Carlsbad, California
4 Days / 3 Nights**

Friday, August 31 through
Monday, September 3, 2018
ONLY 50 SEATS AVAILABLE

Hilton Garden Inn Hotel

Excursions TBD

COPMEA Member Price
\$365 Double Occupancy
\$375 Single Occupancy
Non-Member Price \$550

OR

Apply for a membership and
pay member price

Non-Refundable Deposit of \$50
Due by JUNE 22, 2018
Full Payment due by JULY 21, 2018

Brunch

Old Town Tequila Factory
Old Town San Diego
Saturday, September 1

Pick Up on Friday, August 31 at Fry's, 744 W. Camelback Rd.
On the Westside of Fry's Parking Lot @
N/W/C of 7th Ave. & Camelback Rd.
Bus Boarding Begins at 8:00 thru 8:30 AM
Bus Departs at 8:30 AM
Returning on Monday, September 3
Approximately @ 8:00 PM

☐ ☐ This is a COPMEA Adult Event ☐ ☐
Seats sell fast so don't miss out on this fabulous trip ☐ ☐
Coordinators: Johnny Mendoza, Connie Cordova, Lina Cruz ☐ ☐

**WHILE
SUPPLIES
LAST!!**

There are a few COPMEA calendars left.
Stop by the COPMEA Office for one while supplies last.


Calvin C. Good Building
 351 W. Washington St. - Mezzanine (2nd Floor)
 Phoenix, AZ 85003

602-262-6858

City of Phoenix Municipal Employees Association

Emergency Phone Numbers		Important Phone Numbers																							
Police: _____	Physician: _____	_____																							
Fire: _____	Dentist: _____	_____																							
Poison: _____	Pharmacy: _____	_____																							
2018																									
<table border="1" style="font-size: 8pt;"> <tr><td>January</td><td>February</td><td>March</td><td>April</td><td>May</td><td>June</td></tr> <tr><td>1 2 3 4 5 6 7 8 9 10 11 12 13 14 15 16 17 18 19 20 21 22 23 24 25 26 27 28 29 30 31</td><td>1 2 3 4 5 6 7 8 9 10 11 12 13 14 15 16 17 18 19 20 21 22 23 24 25 26 27 28 29</td><td>1 2 3 4 5 6 7 8 9 10 11 12 13 14 15 16 17 18 19 20 21 22 23 24 25 26 27 28 29 30 31</td><td>1 2 3 4 5 6 7 8 9 10 11 12 13 14 15 16 17 18 19 20 21 22 23 24 25 26 27 28 29 30</td><td>1 2 3 4 5 6 7 8 9 10 11 12 13 14 15 16 17 18 19 20 21 22 23 24 25 26 27 28 29 30 31</td><td>1 2 3 4 5 6 7 8 9 10 11 12 13 14 15 16 17 18 19 20 21 22 23 24 25 26 27 28 29 30</td></tr> <tr><td>July</td><td>August</td><td>September</td><td>October</td><td>November</td><td>December</td></tr> <tr><td>1 2 3 4 5 6 7 8 9 10 11 12 13 14 15 16 17 18 19 20 21 22 23 24 25 26 27 28 29 30 31</td><td>1 2 3 4 5 6 7 8 9 10 11 12 13 14 15 16 17 18 19 20 21 22 23 24 25 26 27 28 29 30 31</td><td>1 2 3 4 5 6 7 8 9 10 11 12 13 14 15 16 17 18 19 20 21 22 23 24 25 26 27 28 29 30</td><td>1 2 3 4 5 6 7 8 9 10 11 12 13 14 15 16 17 18 19 20 21 22 23 24 25 26 27 28 29 30 31</td><td>1 2 3 4 5 6 7 8 9 10 11 12 13 14 15 16 17 18 19 20 21 22 23 24 25 26 27 28 29 30</td><td>1 2 3 4 5 6 7 8 9 10 11 12 13 14 15 16 17 18 19 20 21 22 23 24 25 26 27 28 29 30 31</td></tr> </table>	January	February	March	April	May	June	1 2 3 4 5 6 7 8 9 10 11 12 13 14 15 16 17 18 19 20 21 22 23 24 25 26 27 28 29 30 31	1 2 3 4 5 6 7 8 9 10 11 12 13 14 15 16 17 18 19 20 21 22 23 24 25 26 27 28 29	1 2 3 4 5 6 7 8 9 10 11 12 13 14 15 16 17 18 19 20 21 22 23 24 25 26 27 28 29 30 31	1 2 3 4 5 6 7 8 9 10 11 12 13 14 15 16 17 18 19 20 21 22 23 24 25 26 27 28 29 30	1 2 3 4 5 6 7 8 9 10 11 12 13 14 15 16 17 18 19 20 21 22 23 24 25 26 27 28 29 30 31	1 2 3 4 5 6 7 8 9 10 11 12 13 14 15 16 17 18 19 20 21 22 23 24 25 26 27 28 29 30	July	August	September	October	November	December	1 2 3 4 5 6 7 8 9 10 11 12 13 14 15 16 17 18 19 20 21 22 23 24 25 26 27 28 29 30 31	1 2 3 4 5 6 7 8 9 10 11 12 13 14 15 16 17 18 19 20 21 22 23 24 25 26 27 28 29 30 31	1 2 3 4 5 6 7 8 9 10 11 12 13 14 15 16 17 18 19 20 21 22 23 24 25 26 27 28 29 30	1 2 3 4 5 6 7 8 9 10 11 12 13 14 15 16 17 18 19 20 21 22 23 24 25 26 27 28 29 30 31	1 2 3 4 5 6 7 8 9 10 11 12 13 14 15 16 17 18 19 20 21 22 23 24 25 26 27 28 29 30	1 2 3 4 5 6 7 8 9 10 11 12 13 14 15 16 17 18 19 20 21 22 23 24 25 26 27 28 29 30 31	
January	February	March	April	May	June																				
1 2 3 4 5 6 7 8 9 10 11 12 13 14 15 16 17 18 19 20 21 22 23 24 25 26 27 28 29 30 31	1 2 3 4 5 6 7 8 9 10 11 12 13 14 15 16 17 18 19 20 21 22 23 24 25 26 27 28 29	1 2 3 4 5 6 7 8 9 10 11 12 13 14 15 16 17 18 19 20 21 22 23 24 25 26 27 28 29 30 31	1 2 3 4 5 6 7 8 9 10 11 12 13 14 15 16 17 18 19 20 21 22 23 24 25 26 27 28 29 30	1 2 3 4 5 6 7 8 9 10 11 12 13 14 15 16 17 18 19 20 21 22 23 24 25 26 27 28 29 30 31	1 2 3 4 5 6 7 8 9 10 11 12 13 14 15 16 17 18 19 20 21 22 23 24 25 26 27 28 29 30																				
July	August	September	October	November	December																				
1 2 3 4 5 6 7 8 9 10 11 12 13 14 15 16 17 18 19 20 21 22 23 24 25 26 27 28 29 30 31	1 2 3 4 5 6 7 8 9 10 11 12 13 14 15 16 17 18 19 20 21 22 23 24 25 26 27 28 29 30 31	1 2 3 4 5 6 7 8 9 10 11 12 13 14 15 16 17 18 19 20 21 22 23 24 25 26 27 28 29 30	1 2 3 4 5 6 7 8 9 10 11 12 13 14 15 16 17 18 19 20 21 22 23 24 25 26 27 28 29 30 31	1 2 3 4 5 6 7 8 9 10 11 12 13 14 15 16 17 18 19 20 21 22 23 24 25 26 27 28 29 30	1 2 3 4 5 6 7 8 9 10 11 12 13 14 15 16 17 18 19 20 21 22 23 24 25 26 27 28 29 30 31																				
2019																									
<table border="1" style="font-size: 8pt;"> <tr><td>January</td><td>February</td><td>March</td><td>April</td><td>May</td><td>June</td></tr> <tr><td>1 2 3 4 5 6 7 8 9 10 11 12 13 14 15 16 17 18 19 20 21 22 23 24 25 26 27 28 29 30 31</td><td>1 2 3 4 5 6 7 8 9 10 11 12 13 14 15 16 17 18 19 20 21 22 23 24 25 26 27 28 29</td><td>1 2 3 4 5 6 7 8 9 10 11 12 13 14 15 16 17 18 19 20 21 22 23 24 25 26 27 28 29 30 31</td><td>1 2 3 4 5 6 7 8 9 10 11 12 13 14 15 16 17 18 19 20 21 22 23 24 25 26 27 28 29 30</td><td>1 2 3 4 5 6 7 8 9 10 11 12 13 14 15 16 17 18 19 20 21 22 23 24 25 26 27 28 29 30 31</td><td>1 2 3 4 5 6 7 8 9 10 11 12 13 14 15 16 17 18 19 20 21 22 23 24 25 26 27 28 29</td></tr> <tr><td>July</td><td>August</td><td>September</td><td>October</td><td>November</td><td>December</td></tr> <tr><td>1 2 3 4 5 6 7 8 9 10 11 12 13 14 15 16 17 18 19 20 21 22 23 24 25 26 27 28 29 30 31</td><td>1 2 3 4 5 6 7 8 9 10 11 12 13 14 15 16 17 18 19 20 21 22 23 24 25 26 27 28 29 30 31</td><td>1 2 3 4 5 6 7 8 9 10 11 12 13 14 15 16 17 18 19 20 21 22 23 24 25 26 27 28 29 30</td><td>1 2 3 4 5 6 7 8 9 10 11 12 13 14 15 16 17 18 19 20 21 22 23 24 25 26 27 28 29 30 31</td><td>1 2 3 4 5 6 7 8 9 10 11 12 13 14 15 16 17 18 19 20 21 22 23 24 25 26 27 28 29 30</td><td>1 2 3 4 5 6 7 8 9 10 11 12 13 14 15 16 17 18 19 20 21 22 23 24 25 26 27 28 29 30 31</td></tr> </table>	January	February	March	April	May	June	1 2 3 4 5 6 7 8 9 10 11 12 13 14 15 16 17 18 19 20 21 22 23 24 25 26 27 28 29 30 31	1 2 3 4 5 6 7 8 9 10 11 12 13 14 15 16 17 18 19 20 21 22 23 24 25 26 27 28 29	1 2 3 4 5 6 7 8 9 10 11 12 13 14 15 16 17 18 19 20 21 22 23 24 25 26 27 28 29 30 31	1 2 3 4 5 6 7 8 9 10 11 12 13 14 15 16 17 18 19 20 21 22 23 24 25 26 27 28 29 30	1 2 3 4 5 6 7 8 9 10 11 12 13 14 15 16 17 18 19 20 21 22 23 24 25 26 27 28 29 30 31	1 2 3 4 5 6 7 8 9 10 11 12 13 14 15 16 17 18 19 20 21 22 23 24 25 26 27 28 29	July	August	September	October	November	December	1 2 3 4 5 6 7 8 9 10 11 12 13 14 15 16 17 18 19 20 21 22 23 24 25 26 27 28 29 30 31	1 2 3 4 5 6 7 8 9 10 11 12 13 14 15 16 17 18 19 20 21 22 23 24 25 26 27 28 29 30 31	1 2 3 4 5 6 7 8 9 10 11 12 13 14 15 16 17 18 19 20 21 22 23 24 25 26 27 28 29 30	1 2 3 4 5 6 7 8 9 10 11 12 13 14 15 16 17 18 19 20 21 22 23 24 25 26 27 28 29 30 31	1 2 3 4 5 6 7 8 9 10 11 12 13 14 15 16 17 18 19 20 21 22 23 24 25 26 27 28 29 30	1 2 3 4 5 6 7 8 9 10 11 12 13 14 15 16 17 18 19 20 21 22 23 24 25 26 27 28 29 30 31	
January	February	March	April	May	June																				
1 2 3 4 5 6 7 8 9 10 11 12 13 14 15 16 17 18 19 20 21 22 23 24 25 26 27 28 29 30 31	1 2 3 4 5 6 7 8 9 10 11 12 13 14 15 16 17 18 19 20 21 22 23 24 25 26 27 28 29	1 2 3 4 5 6 7 8 9 10 11 12 13 14 15 16 17 18 19 20 21 22 23 24 25 26 27 28 29 30 31	1 2 3 4 5 6 7 8 9 10 11 12 13 14 15 16 17 18 19 20 21 22 23 24 25 26 27 28 29 30	1 2 3 4 5 6 7 8 9 10 11 12 13 14 15 16 17 18 19 20 21 22 23 24 25 26 27 28 29 30 31	1 2 3 4 5 6 7 8 9 10 11 12 13 14 15 16 17 18 19 20 21 22 23 24 25 26 27 28 29																				
July	August	September	October	November	December																				
1 2 3 4 5 6 7 8 9 10 11 12 13 14 15 16 17 18 19 20 21 22 23 24 25 26 27 28 29 30 31	1 2 3 4 5 6 7 8 9 10 11 12 13 14 15 16 17 18 19 20 21 22 23 24 25 26 27 28 29 30 31	1 2 3 4 5 6 7 8 9 10 11 12 13 14 15 16 17 18 19 20 21 22 23 24 25 26 27 28 29 30	1 2 3 4 5 6 7 8 9 10 11 12 13 14 15 16 17 18 19 20 21 22 23 24 25 26 27 28 29 30 31	1 2 3 4 5 6 7 8 9 10 11 12 13 14 15 16 17 18 19 20 21 22 23 24 25 26 27 28 29 30	1 2 3 4 5 6 7 8 9 10 11 12 13 14 15 16 17 18 19 20 21 22 23 24 25 26 27 28 29 30 31																				





Get up to \$20,000 to buy your home...
Ask me how!

Save *BIG* on real estate fees and loan costs!

- ★ Login at www.homebenefitiq.com
- ★ Username: **COPMEA**
- ★ Password: **savenow**

For information

BOBBIE DARZES



NMLS#2079762 / AZ MLD 0925466
Plan Director
Residential/Corporate Real Estate
Mortgage Benefit Director
602-334-0338
Bobbie.Darzes@WVMB.com

Wallack & Welk Mortgage Bankers BC 0051205 / Corp. NMLS #2073

DORATHEY DUFFIELD



Broker Associate
Realty One Group
602-793-4268
RealtyPartners@gmail.com



FIRST CHOICE

AUTOMOTIVE

TUNE UP
OIL CHANGES
TRANSMISSIONS
ELECTRICAL

SUSPENSION
CLUTCHES
A/C SERVICE
BRAKES

BELTS & HOSES
EXHAUST
DIAGNOSTICS
+ SO MUCH MORE



WE GET THE JOB DONE RIGHT THE FIRST TIME!

2201 W VANBUREN
PHOENIX, AZ 85009 **SUITE #2**

602-615-4856



Home in 5 **DOWN PAYMENT ASSISTANCE!**

PROGRAM GUIDELINES:

HOMEBUYER ELIGIBILITY: 45% maximum debt-to-income ratio.

Income may not exceed \$88,340

Buyers must attend buyer education course and obtain certificate of completion

3.5% grant depending on FICO score

660 FICO score.
(640-659 scores will be eligible for a 2.5% grant)

Special incentives extended to include military personnel, first responders, teachers, and those making less than \$31,450 per year.

Home in 5 is a down payment assistance program helps buyers get a grant towards the down payment for FHA and USDA-RD loans.



SPECIAL INCENTIVES of an additional 1% grant (total of 4.5%) is available to qualified military personnel, first responders, teachers, those making less than \$31,450 per year.

*Qualified "First-Responder, Teacher, Military Personnel" include Qualified Veterans, active duty United States military, active United States Coast Guard, and active members of the National Guard. A "Qualified Teacher" is a person who earned in the prior 12 months, or the prior, and who was discharged or released from an armed services with an honorable discharge provided in 38 U.S.C. Section 101.

MAC1016-144028



Rafael Najera
Loan Officer | NMLS #256119
(602) 561-7156

2314 South Val Vista Dr., Gilbert, AZ 85295
rafael.najera@academymortgage.com
<https://academymortgage.com/rafaelnajera>
AZ 0912252, CA #CA-DOC256119, NM #256119, NV #53703 TX #256119
Corp NMLS #3113 | Corp State Lic AZ #BK-0904081, CA #4170013, NM #01451, NV #2731





Attention City of Phoenix Retirees and Customer Service-Oriented Volunteers

The city of Phoenix is seeking friendly, energetic, customer-service oriented volunteers looking to participate in the downtown Phoenix scene.

In October 2015, the city of Phoenix introduced its City Hall Connectors, a helpful group of volunteers who are committed to assisting visitors to City Hall. City Hall Connectors are stationed at the first floor Phoenix City Hall information desk facing Washington Street and are the welcoming faces as visitors enter the building.

City Hall Connectors connect Phoenix residents and visitors to all the services the city has to offer! Eligible volunteers will receive training, free parking during their assigned shifts and a chance to meet other friendly volunteers and city employees. This volunteer opportunity requires committing to a minimum of two shifts per month, with an option for a three- or six-hour shift. The City Hall information desk will be open Monday to Friday from 8 a.m. to 2 p.m. and closed during major holidays. So if you, or someone you know who is 18 years of age and above, is interested in being a volunteer City Hall Connector, please direct them to volunteer.phoenix.gov, click on "Hot Opportunities" and scroll down for City hall Connectors!

30% COPMEA DISCOUNT

**\$10 Ultra Gift Certificates
ON SALE NOW**

\$ 7^{ea}

- Universal Gift Certificates
- No Expiration Dates
- No Blackout Dates
- The Perfect Gift or Everyday Use

Ultratainment Terms and Conditions: Sales tax and gratuity must be paid with cash or major credit card. Not redeemable for cash. No change given. Not valid with special offers or promotions. Parties of six or more must pay half of their check with cash or a major credit card.

230+ Restaurants, Entertainment Venues and Service Establishments.
Please visit ultratrain.com for complete list of options where Ultratainment are accepted.



ULTRATAIN.COM 7522 E. McDonald Drive, Scottsdale, AZ 85250



City of Phoenix merchandise on sale at the COPMEA Office while supplies last!
 KOOZIE 6-pack Cooler Lunch Bags and Stainless Steel Travel Mugs



Cooler

Member
 Price: \$8

Non-member
 Price \$10



Mug

Member
 Price: \$10

Non-member
 Price \$15

COPMEA sells "Old School"

City Bird ® Caps.

Member Price:

\$16 each or 2 for \$30

Non-member Price: \$20

CASH ONLY



*8 Gig City Bird Flash
 drives for Only \$15*



**We're
 Searching for
 Volunteers**

COPMEA is currently seeking volunteers, high school or college student interns, to work in the COPMEA office

COPMEA will work with the educational institution to gain credit. The positions are voluntary. Must be 16 years or older.

Duties include, but not limited to:

- ◆ Operating office equipment such as a computer, telephone, copier, fax machine, scanner
- ◆ Working knowledge of Microsoft Office applications and internet
- ◆ Processing memberships and ticket sales

Work schedules and hours are flexible and can be arranged during the hours of 8 a.m. to 5 p.m., Monday through Friday

Send your resume and the hours and days you are available to copmea@copmea.com

DISCOUNT® TIRE

SPECIAL DEALS FOR:

TENT SALE PRICES ON WHEELS AND TIRES

DURING THE MONTH OF MARCH ONLY AT THE DISCOUNT TIRE
LOCATED AT

8333 W. THUNDERBIRD RD.

CONTACT: RANDY HOSLER, TONY CAPITANO, OR ANTHONY
LUEVANO AT 623-979-0062 FOR FURTHER DETAILS!!!!

DO NOT

PASS UP THIS OPPORTUNITY FOR A GREAT DEAL ON TIRES AND
WHEELS!!!

WE GUARANTEE THE LOWEST PRICES!!!!

INJURED IN AN ACCIDENT? CALL (480) 269-1083

We take away the stress and let you focus on getting better.



Jose M. Leon
LEON LAW, PLLC
20 East Thomas Road, Suite 2200
Phoenix, AZ 85012
www.LeonLawPLLC.com

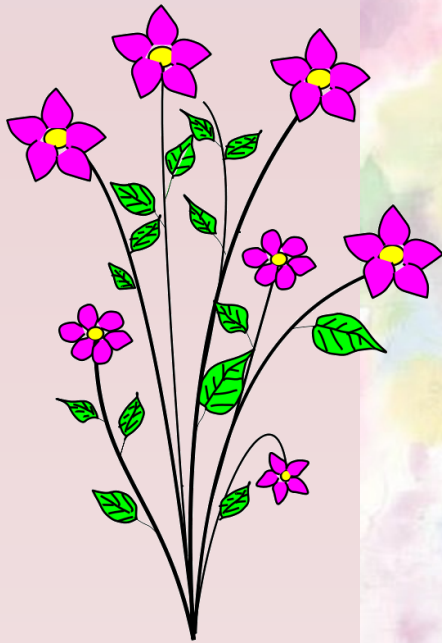
**COPMEA
DISCOUNT**



In Memory of

Tim Avent, Former COPMEA Treasurer and President

John Timothy Avent, known to friends as "Tim," passed away December 19, 2017 at the age of 70. Born in Albany, New York he was adopted by Arthur B. Avent and Beatrice H. Terry-Avent. Growing up in Fairfield, Connecticut he graduated in 1965 from Roger Ludlowe High School where his activities included drama club, fencing and track. He went on to serve in the United States Navy. He has 2 children, Tiffany and Erik with his first wife, Carol Juliette Orduno. As a young man, he enjoyed collecting cars and motocross, even riding in a few races himself. He worked for the City of Phoenix for 30 years before retiring. During that time, he graduated from ASU with a degree in Business. Tim was also very grateful to be a part of the theatre and film communities, performing in many productions around the valley and beyond. He is survived by his two children; Tiffany Avent-Conner and Erik Avent, his three grandchildren; Aaron, Stephan and Isabella, his longtime companion; Christine Kile-Dintini and numerous friends.



Celebrate Mom at COPMEA's Pre-Mother's Day Paint & Sip

Unleash your inner artist! No art experience required.

Saturday, May 5, 2018 at 1:00 – 6:00 p.m.
Fray Garces Colombian Hall
8066 N. 49th Avenue
Glendale, AZ 85302

\$30.00 Members
\$50.00 Non Members

Deadline to purchase tickets is April 27th

Lunch served at 1:00 – 2:30 p.m.
Painting begins at 3:00 p.m.

Two bar drink tickets included - Additional bar services available
for purchase
Art instructors, 16x20 canvas, and supplies will be provided by
Painting with Canvas

Happy Mother's Day!



Welcome New Members

December 2017

Andrea Rodriguez-Madril, Water
Reyna Aspericueta, Water
Sandra Villa, Water
Gary Tredway, Fire
Amber Wallace, Municipal Court
Laura Remus, Convention Center
Andria Jackson, Parks & Recreation
Chris Matus, Water
Michelle Melendez, Law



January 2018

William Head, Streets
Ajsa Nina Jusic, Water
Grace De Franco, Public Works
Ronnie McGuire, Community & Economic Development
Enrique Paniagua, Water
Acacia Anaya, Police
Maurice King, Public Works
Lee Madrid, Water



February 2018

Sicily Donatto, Finance
Arturo Luna, Public Works
Anthony Bernardino, Parks & Recreation
Ciera Webb, Public Works
Debra Madra, Water
Lizette Rodriguez, Public Works
Kerri Keller, Water
Jessica Urias, Water
Christopher Springer, Streets
Sheila Yellowhair, Water
Rhiannon Garland, Water
Australia Hooks, Water
Lynn Arias, Information Technology
Hector Lopez, Fire
Maria Sandoval, Law





1935 Gulbransen Studio Piano &

Wayne Cooper Oil Painting

Erik at aventerik@gmail.com or

<https://www.facebook.com/aventerik>

Lot in Yarnell, Arizona for \$32,500

1.64 acres with a beautiful view and with 9 small pine trees

Build your dream home in the mountains

22183 S Norton Way, Yarnell, Arizona

Julie Velasquez, jvelasq2.jv@gmail.com, 623-234-0181

2012 Toyota Camry SE; white with black/grey interior, 65k (mostly highway) miles, well maintained, nonsmoker, new Michelin radials. \$12,500. Call Ron 602-680-9341

Get your free ad placed here, just call the COPMEA Office for the details

Majerle's Sports Grill

15% OFF

**TO ALL COPMEA MEMBERS
WHEN YOU PRESENT YOUR
COPMEA CARD**

**This discount will work at all
5 locations**

- ⊗ Downtown Phoenix
- ⊗ Chandler Fashion Center Mall
- ⊗ Goodyear at McDowell & Dysart
- ⊗ "Old Town" Scottsdale
- ⊗ Flagstaff on Route '66'

www.majerles.com.



Phoenix Hispanic Network

The Phoenix Hispanic Network (PHN) works to support and foster the professional careers of City of Phoenix employees. The Employee Network Group revitalized itself at its Kick-Off Event last September and is working hard to provide educational and professional opportunities to its members. Since its September event, PHN has held a meet and greet and began its Professional Development Brown Bag series in November. PHN is developing a mentoring program and hopes to launch it next calendar year.

If you interested in becoming a member of PHN or would like more information, please visit their website at www.phoenixhispanicnetwork.org. Should you have any questions or concerns, feel free to send a message to phx.hispanic.network@phoenix.gov and a PHN will respond to your inquiry.

Serving the Great State of Arizona for Over 36 Years

GONZALES

HEATING & COOLING

1547 West Grand Avenue ■ Phoenix, AZ ■ 85007

602-253-2977

Installation and Repair of:

A/C & Heat Pump

Evaporative Coolers

Gas & Electric Heating

Water Heaters

20% Off All Services

COPMEA Member Special

10% Off All Installations

Se Habla Español

Financing Available
90 Days Same as Cash

R.O.C. C39R#52793
L39 #075927



Bell Animal and Bird Hospital

4336 W. Bell Rd. suite #7 (43rd Ave. & Bell NW Corner)
Glendale, AZ 85308
602-978-4331

50% off Vaccines 15% off Services (in-house)
for COPMEA members

www.bellanimalhospital.com



Busch Entertainment Corporation

Discounts available for Adventure Island Tampa, Busch Garden Tampa, Sesame Place, SeaWorld San Antonio, SeaWorld Orlando & Aquatica, Busch Gardens Williamsburg and Water Country USA



Got a Pet?
Save at the vet!

United Pet Care
BETTER than pet insurance!



- Join regardless of pet's age or medical conditions
- Save a minimum of 20% on every visit
- No deductibles or claim forms
- Affordable at less than \$13/month

For more info, or to sign up:
602-266-5303
Toll Free 1-877-872-8800
www.unitedpetcare.com



CENTRAL
PHOENIX
ANIMAL
HOSPITAL



ALICIA RUIZ, DVM

Medicine, Radiology and Surgery
Dogs, Cats, Ferrets & Rabbits

- * EARLY MORNING DROP OFF
- * PROFESSIONAL QUALITY PET CARE
- * QUALITY PET CARE PRODUCTS AND PET FOODS
- * ACCEPTS UNITED PET CARE INSURANCE
- * 10% DISCOUNT ON SERVICES FOR COPMEA MEMBERS

25 WEST THOMAS

(S.W. Corner of First Avenue & Thomas)

PHONE: (602) 277-5155

M-T-TH-F: 7:30 AM-5:30 PM W-Sat: 8:00 AM - Noon

COPMEA HAS DISCOUNTS - CHECK THEM OUT

The COPMEA Office has discounts available for MEMBERS ONLY and for many local and out of state amusement parks, plays, professional athletic games and Talking Stick Resort Arena events. All ticket prices are subject to change without notice. Trips outside of the U.S. require a passport.

LOCAL DISCOUNTS AVAILABLE

<u>Harkins</u>	\$7.00
Harkins Special Engagement (reg. \$7.50 and \$10)	\$8.00
<u>Enchanted Island at Encanto Park</u>	
Unlimited Rides (reg. \$18.75)	\$9.50
<u>Castles and Coasters</u>	
Adult/Child	\$29.33
Unlimited Rides & 1 Round of Golf (reg. \$35)	
<u>Arizona Science Center</u>	
General Admission (reg. Adult \$18 and Child \$13)	\$6.00
<u>Phoenix Zoo</u>	
Adult (reg. \$24.95)	\$18.95
Child 3-13 (reg. \$14.95)	\$10.95
<u>Wildlife World Zoo & Aquarium</u>	
Adults (reg. \$39.99)	\$24.00
Child 3-12 (reg. \$19.99)	\$12.00
<u>Out of Africa</u> (reg. \$29.95/\$14.95)	
Adults (reg. \$32.95)	\$24.95
Child 3-12 (reg. \$16.45)	\$10.95
<u>Desert Botanical Gardens</u>	
Adults (reg. \$22)	\$20.00
Child 3-12 (reg. \$10)	\$5.50
<u>Arizona Sea Life Aquarium, AZ Mills</u>	\$9.73
Reg. Adult \$18 and Child \$13.00	
<u>Legoland Discovery Center (Arizona Mills)</u>	
Adult (reg. \$35) Child (reg. \$30)	\$16.64
<u>Butterfly Wonderland, Scottsdale</u>	
Adults 12+ (reg. \$19.95)	\$18.95
Child 3-11 (reg. \$12.95)	\$9.95
Children 2 years & under free (reg. \$16.95 for student, seniors, military)	
<u>Golfland/Sunsplash</u> (reg. \$28.99)	Closed
<u>Wet and Wild</u>	Closed
(Debit/credit card w/\$5 fee) (reg. Adult 38.99/Child \$29.99)	
<u>Big Surf</u> (reg. \$29.95)	Closed
<u>See's Candies Certificate</u> (reg. \$19.90)	\$16.90
<u>Honey Baked Ham Cert</u> (worth \$40)	\$36.00

SOUTHERN CALIFORNIA TICKETS

<u>SeaWorld</u>	
Adults & Child	\$61.60
<u>Universal Studios</u>	
(must pay by credit/debit card)	
Single Day Ticket Prices vary & depends on date visiting so please call office for pricing	
All Year Pass	Prices Vary
Black out dates apply	
<u>Six Flags Magic Mountain</u>	
(must pay by credit/debit card + \$8.99 fee)	
All Tickets Adult/Child (reg. \$84.99)	\$52.99
<u>Hurricane Harbor</u>	
All Tickets Adult/Child (reg. \$37.99)	Closed
<u>San Diego Zoo or Safari Park</u>	
Adults (reg. \$54)	\$44.20
Child 3-11 (reg. \$44)	\$35.70
<u>Legoland (Single Day)</u>	
Adult (reg. \$95)	\$80.00
Child 3-12 (reg. \$89)	\$75.00
<u>Legoland Discovery Center, Water Park & Sea Life</u>	
<u>Resort Hopper Ticket</u>	
Adult (buy 1 day 2nd day free)	\$85.00
Child Adult (buy 1 day 2nd day free)	\$81.00
(reg. \$104 Adult and \$98 Child)	
<u>Knott's Berry Farm</u>	
(must pay by credit/debit card + \$8.99 fee)	
Adult (reg. \$79)	\$42.00
Child 3-12, Jr. Sr. (reg. \$49)	\$39.00
<u>Knott's Scary Farm</u>	
<i>not recommended for ages 13 and under</i>	
(must pay by credit/debit card + \$5.99 fee)	
Date Specific Tickets Closed	
(Save \$37)	



SPRING

Valley West Travel

Las Vegas, 2 Nights Hotel with Air, \$189 pp
 San Diego, 2 Nights + SeaWorld, \$199 pp
 Disneyland, 2 Nights + 2 Day Hopper Pass, \$341 pp
 Knott's Berry Farm Packages, Hotel, Tickets & More
 Polar Express & Grand Canyon Packages
 Note: certain restrictions may apply to all vacations



Group Vacations

Cancun, 6 Nights, Air, Resort, All Meals & Drinks, June 27, 2018, call on pricing
 Mexican Riviera Cruise, 7 Nights, October 7, 2018, \$685 pp
 Catalina Island, Hotel & Ferry Packages, call for \$
Book NOW for Alaska Cruises 2018 & 2019!!!! - Ask Us How!

Valley West Travel
 623-974-2929
 NEW DIRECT LINE
 623-266-6022

Please contact us
 for any advertised
 trip and for other
 Vacation & Cruise Specials



PLEASE JOIN US
 APRIL 14TH

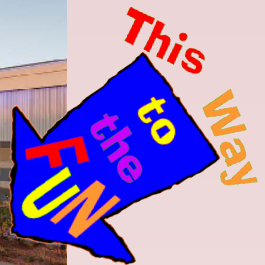
**EAT.
 BOWL.
 PLAY.**



10315 W. McDowell Rd.
 Avondale, AZ 85392

DATE
 Saturday, April 14, 2018

TIME
 3 pm to 7 pm



ACTIVITIES All you can play (4 pm - 7 pm)



Bowling (2 Lanes)



Laser Tag



Gravity Ropes



Billiards



\$10.00 FunCard
 for Arcade

PIZZA SOCIAL MENU

(Served 3 pm - 4 pm)

- Classic Caesar Salad: Tomato Caprese Salad served with Grape Tomatoes, Mozzarella Cheese, and Fresh Basil
- Assorted Pizzas: Traditional Cheese, Pepperoni, the Works and Garden Veggie,
- 3 Wing Trio Platter: Siracha, Garlic Lemon, and Sweet Chili

LIMITED TO FIRST 200 PEOPLE

Cost Member \$20.00
 Cost Nonmember \$40.00

Purchase Tickets at COPMEA Office or
 call 602-282-6858

Tickets must be paid in full at COPMEA office. FunCards and wristbands will be provided at time of purchase. COPMEA will not be responsible for any lost, stolen or damaged FunCards or wristbands.





COPMEA MUNICIPALS (USPS 922-880)
Is published quarterly for \$6 per year by the
City of Phoenix Municipal Employees Association,
251 West Washington Street, Mezzanine, Phoenix, AZ 85003-2245

COPMEA Newsletter

Office Hours

Monday:
1 p.m. to 5 p.m.
Tuesday-Friday:
8 a.m. to 5 p.m.

E-Mail Address

copmea@copmea.com
chris.goldberg@copmea.com
barbara.shrum@copmea.com
alexies.barraza@copmea.com

Web Site

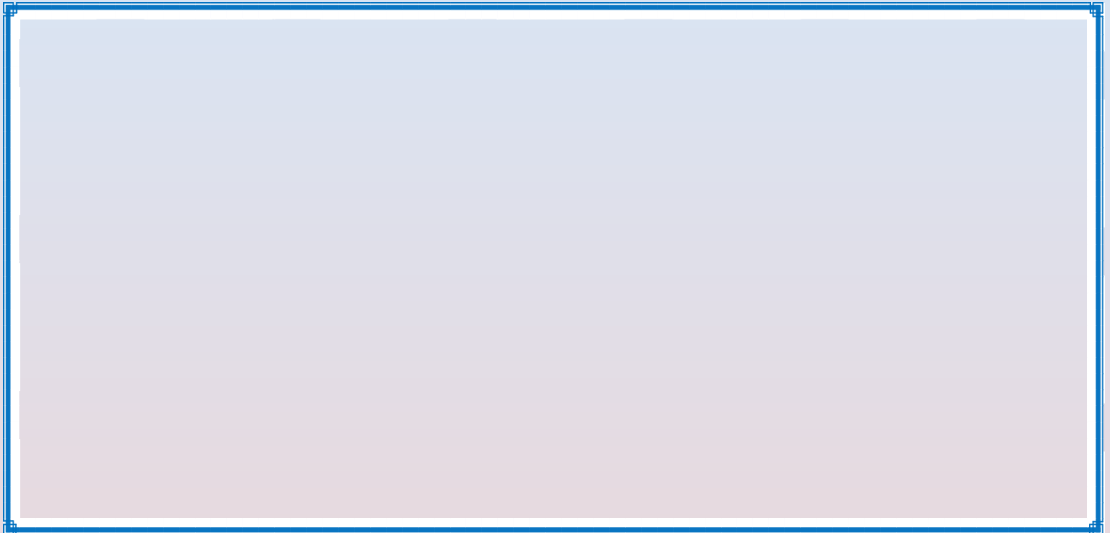
COPMEA.COM

Telephone:

602-262-6857

Fax:

602-534-1964



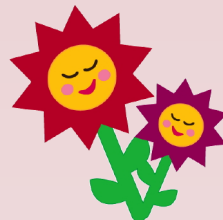
COPMEA Municipal is created by Lina Cruz, edited by Odette Baker,
printed and mailed by City Clerk Print Shop and Design.

COPMEA OFFICE INFORMATION

- Transactions are cash, check, credit, or debit
- Knott's Berry, Six Flags and Universal require purchase by credit/debit card
- Knott's Berry charges a processing fee of \$5.99
- Six Flags charges a processing fee of \$8.99
- No charge for Universal
- \$50 fee charged for all returned checks
- Have your COPMEA cards ready when making purchases
- Tickets for monthly events are restricted to your membership
- Take your old membership card to the COPMEA Office for replacement if your social security number appears on the card
- Report any membership and address changes to the COPMEA Office
- **Send your e-mail address to:**
copmea@copmea.com



MEMBERSHIP INFORMATION



\$4 single monthly membership dues
\$8 family monthly membership dues

Monthly payroll deductions for fulltime and temporary employees. Employees may also do payroll deductions to pay for a family member's membership.

ASSOCIATE ANNUAL MEMBERSHIP

\$48 single annual membership dues

\$96 family annual membership dues

Non-city employees and city of Phoenix retirees may join COPMEA. Dues are paid in full for the year at the time of joining then annually thereafter. Another option is monthly payroll deductions from a city of Phoenix employee family member.

MEMBERSHIP NOTES

- You must be a member to purchase tickets or participate in COPMEA functions
- Tickets and event passes purchased by COPMEA members are for the sole use of the card holder
- Tickets and event passes cannot be purchased for anyone outside of the COPMEA membership
- You must present your COPMEA Card and a valid ID at the time of purchase