



# COPMEA Municipals

Volume 55, Issue 1

Newsletter

Jan.-Feb. 2012

**COPMEA OFFICERS**

Paul Mendez, President  
Elizabeth Fierro-Phasley,  
Vice President  
Connie Haesloop, Treasurer  
Karen Becketts,  
Recording Secretary

**COPMEA DIRECTORS**

Pat Gavazzo  
Joe Guzman  
Mike Pacheco  
Gabriel Bernal  
Connie Cordova  
Lina Cruz  
Ray Yocopis

**PARLIMENTARIAN**

Larry Felix

**OFFICE STAFF**

Chris Goldberg  
Sylvia Pacheco

**MEMBERSHIP RATES**

Single \$4.00  
Family \$8.00

**ASSOCIATE MEMBERSHIPS**

Single \$48.00 per year  
Family \$96.00 per year

COPMEA MUNICIPALS (USPS 922-880) is published monthly for \$6.00 per year by the City of Phoenix Municipal Employees Association, 135 North 2nd Avenue, Personnel Building Basement, Phoenix, AZ 85003. (602) 262-6857.

**COPMEA HOURS**

The COPMEA Office hours are:  
Monday  
1:00 p.m. to 5:00 p.m.  
Tuesday-Friday  
8:00 a.m. to 5:00 p.m.

**E-Mail Address:**

[Sylvia.pacheco@copmea.org](mailto:Sylvia.pacheco@copmea.org)  
[Chris.goldberg@copmea.org](mailto:Chris.goldberg@copmea.org)

Check out the Web Site  
**COPMEA.COM**

**Valentines Day Dance**

Saturday February 11, 2012  
at  
Rosal Workers Social Club  
3720 W. Greenway Rd. Phoenix, Az

\$7.00 Members  
\$12.00 NON-Members

Dinner will be from 7 - 8:30pm  
Provided By Sonny's BBQ

Dance from 8 - Midnight  
Music By DJ Joe Martinez

Pictures taken for \$8

*Do Come and Dance the Night Away!*



## Trip to the Grand Canyon on the Railway!

ON SATURDAY

FEBRUARY 18TH - 19TH, 2011

WE'LL BE HEADIN UP NORTH FOR A BEAUTIFUL TRIP UP TO THE GRAND CANYON ON THE GRAND CANYON RAILWAY!

WE WILL MEET AT THE METROCENTER TRANSIT CENTER. BUS WILL LOAD AT 9AM AND LEAVE 9:30 AM SHARP!

FOR SINGLE OCCUPANT - \$200.00

2 PEOPLE PER ROOM - \$164.00 PER PERSON

3 PEOPLE PER ROOM - \$154.00 PER PERSON

4 PEOPLE PER ROOM - \$150.00 PER PERSON

NON - MEMBERS \$250.00

A \$50.00 NON - REFUNDABLE DEPOSIT UNLESS COPMEA CANCELS.

RESERVATIONS NEED TO BE MADE & PAID IN FULL BY JANUARY 27TH 2012!

NO REFUNDS AFTER DUE DATE!!

Hotel, Bus, Train & Entry fees into park are included in the price!

YA'LL BE HEADIN UP TO GOOD O'L WILLIAMS, BUT BEFORE THAT - A LITTLE STOP IN SEDONA. WHILE IN WILLIAMS YOU WILL BE ABLE TO TAKE IN THE WONDERFUL OLD TOWN FEELING OF DOWNTOWN WILLIAMS...WHERE THERE ARE GREAT EATIN PLACES AND SHOPS.

WHILE ON BOARD THE TRAIN, YOU'LL TAKE IN THAT OLD WEST FEELIN AND ABSORB THE INCREDIBLE SCENERY OF THE NORTHERN PART OF OUR BEAUTIFUL STATE!

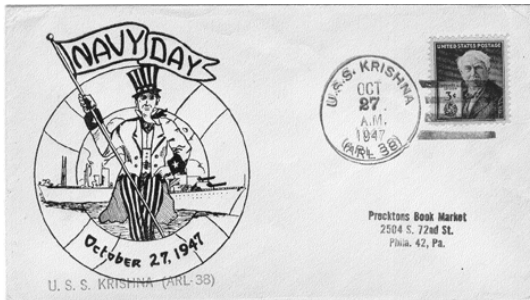
COPMEA is NOT responsible for any Union dues events and Any NON-Covered Expenses on these Trips.

# Comments made in the year 1955!

**'I'll tell you one thing, if things Keep going the way they are, it's going to be impossible to Buy a week's groceries for \$10.00. '**



**'Have you seen the new cars Coming out next year? It won't Be long before \$1,000.00 will Only buy a used one.'**



**'Did you hear the post office is Thinking about charging 7 cents Just to mail a letter.'**



**'When I first started driving, who Would have thought gas would Someday cost 25 cents a gallon. Guess we'd be better off leaving The car in the garage.'**



**'The drive-in restaurant is Convenient in nice weather, But I seriously doubt they Will ever catch on.'**

**'There is no sense going on short Trips anymore for a weekend. It Costs nearly \$2.00 a night to stay In a hotel.'**

**'Did you see where some base- ball Player just signed a contract for \$50,000 a year just to play ball? It wouldn't surprise me if someday They'll be mak- ing more than the President. '**



**'No one can afford to be sick Anymore. At \$15.00 a day in The hospital, it's too rich for My blood.'**



Nature's Pain Reliever  
**GERONIMO'S REMEDIES**  
 A Legend In Healing Eucalyptus Oil and Balm



A & Y Distributors  
 (602)256-7556 or (602)527-2753



**SHOP PHOENIX**



**KEEP OUR TAX DOLLARS HERE!**

# 2012 Disneyland Pricing and Promotional pricing

## 2012 CORPORATE ONLINE TICKET FORM

Available to companies outside of Zip Codes 90000-93399

STANDARD PARK TICKETS THROUGH DECEMBER 31, 2012	NET
* 2-Day/1-Park per Day Ticket to visit either Disneyland® Park or @ Disney California Adventure® Park each day for two days. Ticket is not valid to visit both theme parks on same day.	Ages 10+ \$150.10 Ages 3-9 \$138.70
* 2-Day Park Hopper®	Ages 10+ \$164.35 Ages 3-9 \$152.95
* 3-Day/1-Park per Day Ticket to visit either Disneyland® Park or @ Disney California Adventure® Park each day for three days. Ticket is not valid to visit both theme parks on same day.	Ages 10+ \$179.10 Ages 3-9 \$164.70
* 3-Day Park Hopper®	Ages 10+ \$192.60 Ages 3-9 \$178.20
* 4-Day/1-Park per Day Ticket to visit either Disneyland® Park or @ Disney California Adventure® Park each day for four days. Ticket is not valid to visit both theme parks on same day.	Ages 10+ \$197.10 Ages 3-9 \$180.90
* 4-Day Park Hopper®	Ages 10+ \$210.60 Ages 3-9 \$194.40
* 5-Day/1-Park per Day Ticket to visit either Disneyland® Park or @ Disney California Adventure® Park each day for five days. Ticket is not valid to visit both theme parks on same day.	Ages 10+ \$207.90 Ages 3-9 \$189.90
* 5-Day Park Hopper®	Ages 10+ \$221.40 Ages 3-9 \$203.40

**NOTE:** First visit on all above tickets must be on or before December 31, 2012. All of the above ticket types expire 13 days after first use or on January 13, 2013, whichever occurs first

PROMOTIONAL PARK TICKETS: JANUARY 4, 2012 - MAY 28, 2012**	NET
* Promotional 3-Day Park Hopper® Bonus Ticket	Ages 10+ \$179.10 Ages 3-9 \$164.70
* Promotional 4-Day Park Hopper® Bonus Ticket	Ages 10+ \$197.10 Ages 3-9 \$180.90
* Promotional 5-Day Park Hopper® Bonus Ticket	Ages 10+ \$207.90 Ages 3-9 \$189.90

**\*\* BLOCKOUT DATES FOR PROMOTIONAL TICKETS IS MARCH 30, 2012 THROUGH APRIL 15, 2012**

**NOTE:** First visit on all above promotional tickets must be on or before May 28, 2012. All of the above promotional ticket types expire 13 days after first use or on June 10, 2012, whichever occurs first

CITYPASS TICKETS: JANUARY 4, 2011 - DECEMBER 31, 2011	NET
* CityPass	Ages 10+ \$248.40 Ages 3-9 \$206.10

**Note:** Program ticket prices and dates subject to change without notice. In the event of a price increase, ticket reorders will be filled at the new prices. Admission is free for children two and under.



Got a Pet?  
**Save at the vet!**

**United Pet Care**

**BETTER than pet insurance!**

- Join regardless of pet's age or medical conditions
- Save a minimum of 20% on every visit
- No deductibles or claim forms



For more information, or to sign up:

**602-266-5303 • Toll Free 1-877-872-8800**  
[www.unitedpetcare.com](http://www.unitedpetcare.com)



*faded flowers* |  
 jewelry with distinction

Created by Roseann Robinson

Contact

602-882-1881 or

[roseannrobinson2002@cox.net](mailto:roseannrobinson2002@cox.net)

for a show or party

Discounts for COPMEA  
 Members



<https://roseannrobinson.scentsy.us>



# WELCOME

## WELCOME NEW MEMBERS

<b>Aviation</b>	Margaret Harris
<b>Communications</b>	Yolanda Olgin
<b>Human Services</b>	Norma Alvarado
<b>Housing</b>	Patsy Flores Ruth Somoza
<b>Public Works</b>	Manuel Lopez
<b>Water Services</b>	Angela Gee Steven Gross



## CONGRATULATION RETIREES

Linda Anderson December 30, 2011
Barbara Bellamy December 30, 2011
Rosemarie Chavez December 30, 2011
Ronald A. Hess December 30, 2011

Conrad Orosco June 27, 2011
Don Radford December 30, 2011
David Scott January 31, 2012
Cheryl West July 19, 2011



## COPMEA CLASSIFIEDS

**House For Rent:** Historic Encanto Area, 1822 N. 17<sup>th</sup> Avenue, Phoenix, 85007. 2 bedrooms/ 1 bath, AC/ central heat pump, Remodeled/ ceiling fans, Refrigerator/Stove/Dishwasher, Carport/Large Covered patio in back, Fenced backyard/ Security lighting. Pets Okay. *Non-smoking house-Smoking outside OK.* \$800.00 monthly rent, \$800.00 security deposit. Ref's req./Credit check. Call (602)258-2620 or (602)350-0849

*New Arrival*

*Victoria Mia Richmond<sup>3</sup>*  
*DOB: 12/2/11 @ 10:45*  
*Weight: 6lbs 14 oz.*  
*Length: 20 "*



**CENTRAL  
PHOENIX  
ANIMAL  
HOSPITAL**




---

**ALICIA RUIZ, DVM**  
 Medicine, Radiology and Surgery  
 Dogs, Cats, Ferrets & Rabbits

- \* EARLY MORNING DROP OFF
- \* PROFESSIONAL QUALITY PET CARE
- \* QUALITY PET CARE PRODUCTS AND PET FOODS
- \* ACCEPTS UNITED PET CARE INSURANCE
- \* 10% DISCOUNT ON SERVICES FOR COPMEA MEMBERS

**25 WEST THOMAS**  
 (S.W. Corner of First Avenue & Thomas)  
**PHONE: (602) 277-5155**  
 M-T-TH-F: 7:30 AM-5:30 PM W-Sat: 8:00 AM - Noon

# When Insults Had Class

These glorious insults are from an era before the English language got boiled down to nothing but 4-letter words.

An exchange between Churchill & Lady Astor:  
She said, "If you were my husband I'd poison your tea."  
He said, "If you were my wife, I'd drink it."

"He had delusions of adequacy." - Walter Kerr

A member of Parliament to Disraeli: "Sir, you will either die on the gallows or of some unspeakable disease."

"That depends, Sir," said Disraeli, "whether I embrace your policies or your mistress."

"He has all the virtues I dislike and none of the vices I admire." - Winston Churchill

"I have never killed a man, but I have read many obituaries with great pleasure." Clarence Darrow

"He has never been known to use a word that might send a reader to the dictionary." - William Faulkner (about Ernest Hemingway).

"Thank you for sending me a copy of your book; I'll waste no time reading it." - Moses Hadas

"I didn't attend the funeral, but I sent a nice letter saying I approved of it." - Mark Twain

"He has no enemies, but is intensely disliked by his friends.." - Oscar Wilde

"I am enclosing two tickets to the first night of my new play; bring a friend.... If you have one." - George Bernard Shaw to Winston Churchill

"Cannot possibly attend first night, will attend second... If there is one." - Winston Churchill, in response.

"He is a self-made man and worships his creator." - John Bright

"His mother should have thrown him away and kept the stork."- Mae West

"In order to avoid being called a flirt, she always yielded easily." - Charles, Count Talleyrand

"Some cause happiness wherever they go; others, whenever they go." - Oscar Wilde

"He uses statistics as a drunken man uses lamp-posts. . . For support rather than illumination." - Andrew Lang (1844-1912)

"He has Van Gogh's ear for music." - Billy Wilder



"I've had a perfectly wonderful evening. But this wasn't it."  
Groucho Marx

**VALLEY WEST TRAVEL**

HAPPY NEW YEAR



January 2012

**Vacations**

Las Vegas, 2 Nights Hotel with Air .....	\$ 189 pp
San Diego, 2 Nights + Sea World .....	\$ 194 pp
Disneyland, 2 Nights + 2 Day Hopper Pass .....	\$ 269 pp
Honolulu, Hawaii, 6 Nights, Hotel/Air .....	\$ 759 pp
Puerto Vallarta, 5 Nights Hotel/Air, .....	\$ 790 pp
Mazatlan, 5 Nights Hotel/Air, .....	\$ 485 pp
Cancun, 5 Nights Hotel/Air, Jr. Suite All Inclusive .....	\$ 779 pp
Grand Canyon Railroad Package .....	Call for details

Please note that certain restrictions may apply to all vacations.

**Group Vacations**

New York City, Air/Hotel/Tours & More, May 2-6, 2012 ..	\$1560 pp
Exotic Western Caribbean Cruise, 7 Nts, May 27, 2012 ..	\$ 770 pp
Queen Mary 2, 5 Night Cruise, July 1, 2012 .....	\$ 1405 pp

**Valley West Travel**

623-974-2929

With over 25 Years of Travel Industry Experience  
Please contact us for information on other Vacation & Cruise Specials

**VALLEY WEST TRAVEL**



February 2012

**Vacations**

Las Vegas, 2 Nights Hotel with Air .....	\$ 189 pp
San Diego, 2 Nights + Sea World .....	\$ 194 pp
Disneyland, 2 Nights + 2 Day Hopper Pass .....	\$ 269 pp
Honolulu, Hawaii, 6 Nights, Hotel/Air .....	\$ 759 pp
Puerto Vallarta, 5 Nights Hotel/Air, .....	\$ 790 pp
Mazatlan, 5 Nights Hotel/Air, .....	\$ 485 pp
Cancun, 7 Nights Hotel/Air, All Inclusive .....	\$ 889 pp

Please note that certain restrictions may apply to all vacations.

**Group Vacations**

Baja Cruise, 4 Nights, Sept. 24, 2012.....	\$352pp
Mediterranean Cruise, 7 Nights, Sept. 20, 2012 . . . . .	\$876 pp
Mediterranean Cruise, 12 Nights Sept. 27, 2012 .....	\$1740 pp
New Ship "Carnival Magic", 7 Nights, Caribbean Cruise, Feb. 3, 2013 .....	\$ 675 pp

**Valley West Travel**

623-974-2929

With over 25 Years of Travel Industry Experience  
Please contact us for information on other Vacation & Cruise Specials

**GONZALES  
HEATING & COOLING**

1547 Grand Ave ~ Phoenix, AZ 85007  
Ph (602)253-2977 ~ Fax (602)253-6255  
[www.gonzaleshc.com](http://www.gonzaleshc.com)

Serving the Great State of Arizona for over 28 Years  
R.O.C. Q39R # 52793 • L39 # 075927

Heat Pumps ~Free Estimates  
Refrigerated Air Conditioners  
Historic Home Specialists ~Evaporative Coolers  
Metal Fabrication ~Gas & Electric Heating  
Duct Decontamination • EPA-Certified Technicians

\*10% discount on all services to COPMBA members.\*

\*\*We offer 90 days same as cash with no credit check,  
Please call the office for full details.\*\*



I woke up,  
I lifted my arms,  
I moved my knees,  
I turned my neck....

Everything made the same noise:

'CrrrrrrrrrrrrraaaaaaaaaaacccccK!'

...I came to a conclusion:

I am not old,

I am crispy!!!

## WE HAVE DISCOUNTS

The COPMEA Office has discounts available for many local and out of state attractions and events. For special events or quick turnaround, watch for Flyers from the COPMEA Office. Also keep an eye on Muncipals — we try to get the news to you!

LOCAL DISCOUNTS AVAILABLE		
<u>Movie Theatres</u>		
Harkins		\$ 6.00
AMC		\$ 6.00
Special Engagement (Harkins & AMC)		\$ 7.50
<u>Enchanted Island at Encanto Park</u>		
Unlimited Rides		\$ 6.00
<u>Castles and Coasters</u>		
Unlimited Rides And Golf		
Adult/Child (5 Hour Ticket Limit)		\$15.50
<u>Arizona Science Center</u>		
General Admission		\$18.00
<u>Phoenix Zoo</u>		
Adult (Reg. \$16.00)		\$13.00
Child		\$ 7.00
<u>Wildlife World Zoo &amp; Aquarium</u> (gate price \$29/\$15)		
Adults		\$22.00
Child (3-12)		\$10.00
<u>Out of Africa</u> (gate price \$36/\$20)		
Adults		\$18.00
Child (3-12)		\$10.00
<u>Desert Botanical Gardens</u>		
Adults		\$15.00
Child (3-12)		\$ 5.00
<u>Arizona Sea Life Aquarium</u> , Arizona Mills		
Reg price - Adult \$18.50 and Child \$10.50		\$10.00
<u>Sunsplash</u> (gate price \$28)	<b>CLOSED</b>	\$19.50
<u>Wet and Wild</u>	<b>UNTIL</b>	\$28.00
<u>Big Surf</u>	<b>MEMORIAL DAY</b>	\$18.00

SOUTHERN CALIFORNIA TICKETS	
CALIFORNIA DISCOUNT TICKETS FOR MEMBERS TICKETS ARE AVAILABLE AT COPMEA OFFICE <b>All tickets are subject to change without Notice!</b>	
<u>Seaworld Single Day</u> <span style="float: right;">\$48.00</span>	
Fun Card through June 30	\$60.00
Fun Card July 1-Sept. 30	\$68 Adult/\$60 Child
(gate price \$73 Adult/\$65 Child)	
<u>Universal Studios</u> ( <b>Must be paid by debit/credit card</b> )	
<i>All Prices Shown are Adult or Child</i>	
\$10 off General Admission and get 6 months free..	
No black out dates on first use (gate \$77)	\$ 67.00
FOL Pass	\$129.00
<u>Six Flags Magic Mountain</u>	
All Tickets Adult/Child	\$32.00
(gate price \$62.99 Adult/\$36.99 Child)	
<u>Hurricane Harbor</u>	
All Tickets Adult/Child	\$23.00
(gate price \$37.99)	
<u>San Diego Zoo</u>	
Adults (gate price \$42)	\$36.00
Child 3-11 (gate price \$32)	\$26.00
<u>San Diego Wild Animal Park</u>	
Adults (gate price \$42)	\$36.00
Child 3-11 (gate price \$32)	\$26.00
<u>Legoland</u>	
Adults and Child (2nd day free)	\$56.00
(gate price adults \$62, child 3-12 & Senior 60+ \$52)	
<u>Legoland and Sea Life Aquarium</u>	
<u>Resort Hopper Ticket</u>	
Adults and Child	\$66.00
(gate price adults \$95, child 3-12 & Senior 60+ \$89)	
<u>Knotts Berry Farm</u>	
Adult 12+ (gate price \$43)	\$30.00
Child (gate price \$33)	\$21.00
Senior 62+ (gate price \$33)	\$21.00
<i>Adults are Age 3 &amp; Up 48" &amp; Up</i>	
<i>Child are Age 3 &amp; Up 48" &amp; Under</i>	



**REMEMBER TO CHECK  
WITH THE COPMEA  
OFFICE FOR OTHER  
DISCOUNTS  
WHICH MAY BE  
AVAILABLE**



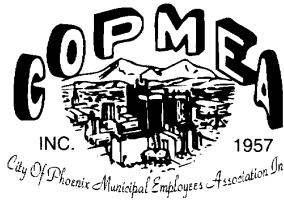
All Ticket Prices are subject to Change without Notice  
COPMEA may also sell tickets for events at the America West Arena  
Call the COPMEA Office at 262-6857 for further details.

**IMPORTANT NOTE:** COPMEA trips outside of the United States,  
**Require a passport. NO EXCEPTIONS.**

### Busch Entertainment Corporation

Discounts are also available from the Busch Entertainment Corporation for Adventure Island Tampa, Busch Garden Tampa, Sesame Place, SeaWorld Orlando, SeaWorld San Antonio, SeaWorld Orlando & Aquatica, Busch Gardens Williamsburg, and Water Country USA.

Please call the COPMEA Office for details.



COPMEA MUNICIPALS (USPS 922-880) is published monthly for \$6.00 per year by the City of Phoenix Municipal Employees Association, 135 North 2nd Avenue, Suite B-5, Phoenix, AZ 85004.

POSTMASTER

Send address corrections to

COPMEA

Periodicals Postage Paid

## COPMEA Newsletter

135 North 2nd Avenue  
Suite B-5  
Phoenix, AZ 85004

Phone: 602-262-6858  
Fax: 602-534-1964

**DISCLAIMER:** ACCEPTANCE OF ADVERTISING IN MUNICIPALS DOES **NOT** CONSTITUTE AN ENDORSEMENT BY COPMEA OF THE GOODS OR SERVICES OFFERED.

### OFFICE INFO

COPMEA members, the Office Staff ask that you please remember:

- Credit and debit cards will be accepted **ONLY** for Disneyland or Universal Studios. All other transactions are cash or check.
- Please have your COPMEA cards ready when making any purchases.
- Report any changes in membership and address changes to the office.
- Tickets for monthly events are restricted to your membership and your COPMEA card is required to purchase tickets.
- Please keep in mind when making vacation plans to purchase your tickets to any of the California amusement parks as far in advance as possible as there is a **limited** supply on hand.
- E-mail the Office or visit the website at [www.copmea.com](http://www.copmea.com)

The Office is issuing new COPMEA cards with employee ID numbers. Please check your cards. If your social security number is on your card, please bring it by the office and we will be happy to issue you a new card.



### ASSOCIATE MEMBERSHIP

The Associate Memberships are as follows:

The dues for a Single Associate Membership is \$48.00 and \$96.00 for a Family Associate Membership. This fee is payable yearly.

This membership fee will entitle you to all membership benefits consisting of:

\*Receiving Monthly Municipals

\*Ability to purchase discounted tickets

\*Attend monthly membership meetings

\*Attend monthly events

If you choose an Associate Membership please remit your yearly dues along with your completed membership application card to Copmea 101 S. Central Ave. #610 Phoenix, AZ 85004. Also please check out our web page at [www.copmea.com](http://www.copmea.com)

Non-payment of dues will result in a forfeit of all membership privileges.

Should you have any questions, please contact the COPMEA office at (602) 262-6858.

### SPECIAL NOTE

Municipals is longer being individually mailed to the members. The newsletter may be accessed online at the COPMEA website, [www.COPMEA.com](http://www.COPMEA.com). The newsletter will continue to be mailed to retirees.