



# COPMEA Municipals

Volume 55, Issue 6

Newsletter

July 2012

**COPMEA OFFICERS**

Paul Mendez, President  
Elizabeth Fierro-Phasley,  
Vice President  
Connie Haesloop, Treasurer  
Karen Becketts,  
Recording Secretary

**COPMEA DIRECTORS**

Dianna Manning  
Joe Guzman  
Mike Pacheco  
Gabriel Bernal  
Connie Cordova  
Lina Cruz  
Ray Yocopis

**PARLIMENTARIAN**

Larry Felix

**OFFICE STAFF**

Chris Goldberg  
Sylvia Pacheco

**MEMBERSHIP RATES**

Single \$4.00  
Family \$8.00

**ASSOCIATE MEMBERSHIPS**

Single \$48.00 per year  
Family \$96.00 per year

COPMEA MUNICIPALS (USPS 922-880) is published monthly for \$6.00 per year by the City of Phoenix Municipal Employees Association, 135 North 2nd Avenue, Personnel Building Basement, Phoenix, AZ 85003. (602) 262-6857.

**COPMEA HOURS**

The COPMEA Office hours are:  
Monday  
1:00 p.m. to 5:00 p.m.  
Tuesday-Friday  
8:00 a.m. to 5:00 p.m.

**E-Mail Address:**

Sylvia.pacheco@copmea.org  
Chris.goldberg@copmea.org

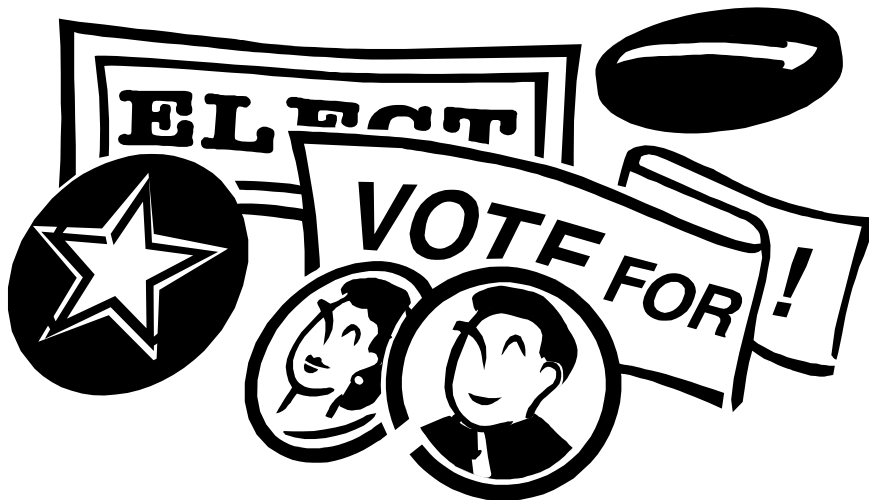
Check out the Web Site  
**COPMEA.COM**

## WOULD YOU LIKE TO HELP SERVE THE COPMEA MEMBERSHIP?

**Positions up open in the upcoming election for:**

**Vice President  
Recording Secretary  
And  
2 Board of Directors**

**Anyone interested in running  
should contact the Copmea office**



**Please consider helping keep COPMEA  
a vital organization for City of Phoenix employees**

**VOLUNTEER TO SERVE TODAY!!**

**Shell Chiropractic, Inc.**  
 114 W. Adams, Suite C-105  
 Phoenix, AZ 85003  
 602-254-0177

**Now Offering  
 Unlimited  
 Chiropractic  
 Adjustments**

**\$39.95/month**  
 with 3 month contract

**10% off for  
 COPMEA Members**

**Shell Chiropractic, Inc.**  
 602-254-0177


## In Memorium

**Jack Boyer**  
 March 18, 1925 - May 12, 2012


**Amelia Gutierrez**  
 July 13, 1938 - June 2, 2012

**MaryAnn Hanula**  
 May 9, 1939 - May 12, 2012

If you would like to write a tribute for a  
 COPMEA member please submit them to the  
 COPMEA office.



**CENTRAL  
 PHOENIX  
 ANIMAL  
 HOSPITAL**



**ALICIA RUIZ, DVM**  
 Medicine, Radiology and Surgery  
 Dogs, Cats, Ferrets & Rabbits

- \* EARLY MORNING DROP OFF
- \* PROFESSIONAL QUALITY PET CARE
- \* QUALITY PET CARE PRODUCTS AND PET FOODS
- \* ACCEPTS UNITED PET CARE INSURANCE
- \* 10% DISCOUNT ON SERVICES FOR COPMEA MEMBERS

**25 WEST THOMAS**  
 (S.W. Corner of First Avenue & Thomas)  
**PHONE: (602) 277-5155**  
 M-T-TH-F: 7:30 AM-5:30 PM W-Sat: 8:00 AM - Noon



**Disneyland**  
RESORT

**Corporate Ticket Program Pricing as of June 8, 2012**

Ticket Type	Ages	Corporate Discount Price	Box Office Price
2-Day (1-Day/1-Park) Ticket Valid through December 31, 2013	Adult 10+ Child 3 - 9	\$161.50 \$150.10	\$170.00 \$158.00
2-Day Park Hopper <sup>®</sup> Ticket Valid through December 31, 2013	Adult 10+ Child 3 - 9	\$190.00 \$178.60	\$200.00 \$188.00
*3-Day (1-Day/1-Park) Ticket Valid through December 31, 2013	Adult 10+ Child 3 - 9	\$198.00 \$184.50	\$220.00 \$205.00
*3-Day Park Hopper <sup>®</sup> Ticket Valid through December 31, 2013	Adult 10+ Child 3 - 9	\$225.00 \$211.50	\$250.00 \$235.00
*4-Day (1-Day/1-Park) Ticket Valid through December 31, 2013	Adult 10+ Child 3 - 9	\$220.50 \$202.50	\$245.00 \$225.00
*4-Day Park Hopper <sup>®</sup> Ticket Valid through December 31, 2013	Adult 10+ Child 3 - 9	\$247.50 \$229.50	\$275.00 \$255.00
*5-Day (1-Day/1-Park) Ticket Valid through December 31, 2013	Adult 10+ Child 3 - 9	\$234.00 \$216.00	\$260.00 \$240.00
*5-Day Park Hopper <sup>®</sup> Ticket Valid through December 31, 2013	Adult 10+ Child 3 - 9	\$261.00 \$243.00	\$290.00 \$270.00
CITYPASS Ticket Valid through December 31, 2012	Adult 10+ Child 3 - 9	\$251.10 \$215.10	\$279.00 \$239.00

First visit usage on all above tickets (except CITYPASS) must be made on or before December 31, 2013. All ticket types expire 13 days after first usage or on January 13, 2014, whichever occurs first

CITYPASS - First visit usage must be made on or before December 31, 2012 and expires 13 days after first usage or on January 13, 2013, whichever occurs first

\* These tickets include one (1) Magic Morning Entry - Magic Morning Entry allows admission to selected attractions in Disneyland - Park on Sunday, Tuesday, Thursday or Saturday one hour prior before the park opens to the general public. Magic Mornings is not offered for Disney California Adventure<sup>®</sup> Park. Applicable days and hours of operations of Magic Morning Entry are subject to change without notice. Please go on to [www.disneyland.com](http://www.disneyland.com) to see the current park operating hours.

Disclaimer: All prices, attractions and entertainment may be seasonal and are subject to change without notice

Nature's Pain Reliever  
GERONIMO'S REMEDIES  
A Legend In Healing Eucalyptus Oil and Balm



A & Y Distributors  
(602)256-7556 or (602)527-2753

# GONZALES

## HEATING & COOLING

1547 Grand Ave - Phoenix, AZ 85007  
Ph (602)253-2977 - Fax (602)253-6255  
[www.gonzaleshc.com](http://www.gonzaleshc.com)

Serving the Great State of Arizona for over 28 Years  
R.O.C. C98R # 52793 • L29 # 075927

Heat Pumps ~Free Estimates  
Refrigerated Air Conditioners  
Historic Home Specialists ~Evaporative Coolers  
Metal Fabrication ~Gas & Electric Heating  
Duct Decontamination • EPA Certified Technicians

\*10% discount on all services to COPMEA members\*

\*\*We offer 90 days same as cash with no credit check, Please call the office for full details\*\*



### SHOP PHOENIX



### KEEP OUR TAX DOLLARS HERE!



## Got a Pet? Save at the vet!

### United Pet Care

**BETTER than pet insurance!**

- Join regardless of pet's age or medical conditions
- Save a minimum of 20% on every visit
- No deductibles or claim forms



For more information, or to sign up:

602-266-5303 • Toll Free 1-877-872-8800  
[www.unitedpetcare.com](http://www.unitedpetcare.com)



### PLEASE NOTE PARKING AT COPMEA OFFICE

There is No Complimentary Parking when visiting the COPMEA office. There is metered parking and, if you park in the garage, there is a fee. COPMEA does not validate any parking passes. Thank you!



*faded flowers* |  
jewelry with distinction

Created by Roseann Robinson

Contact

602-882-1881 or

[roseannrobinson2002@cox.net](mailto:roseannrobinson2002@cox.net)

for a show or party

Discounts for COPMEA Members



<https://roseannrobinson.scentsy.us>

# WELCOME

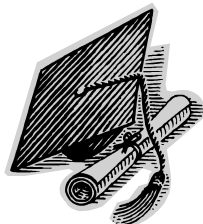
## WELCOME NEW MEMBERS

<b><u>Fire</u></b>	Keith Rohr
<b><u>Engineering</u></b>	Scott Conley
<b><u>Human Services</u></b>	Lisa Esquivel
<b><u>Library</u></b>	Lisa Daley Carol Simmons
<b><u>Neighborhood Services</u></b>	Alma Lara
<b><u>Planning</u></b>	Mary Chandler
<b><u>Police</u></b>	Tammy Lachcik
<b><u>Street Transportation</u></b>	Yolanda Osorio
<b><u>Water Services</u></b>	Arturo Orozco Nazario Prieto



### CONGRATULATIONS 2012 GRADUATES

Erica R. Tanori  
Copper Canyon High School  
May 23, 2012



### VALLEY WEST TRAVEL



July 2012

#### Vacations

Branson for Christmas, 3 Nts., Hotel, Shows, Meals . . .	\$ 735 pp
Las Vegas, 2 Nights Hotel with Air . . . . .	\$ 189 pp
San Diego, 2 Nights + Sea World . . . . .	\$ 194 pp
Disneyland, 2 Nights + 2 Day Hopper Pass . . . . .	\$ 269 pp
Honolulu, Hawaii, 6 Nights, Hotel/Air . . . . .	\$ 759 pp
Puerto Vallarta, 5 Nights Hotel/Air, . . . . .	\$ 790 pp
Mazatlan, 5 Nights Hotel/Air, . . . . .	\$ 485 pp
Cancun, 7 Nights Hotel/Air, All Inclusive . . . . .	\$ 889 pp

Please note that certain restrictions may apply to all vacations.

#### Group Vacations

Fall School Break Mexico, 4 Nights, Oct. 5, 2012 . . . . .	\$ 415 pp
Mexican Riviera, 7 Night Cruise, Oct. 7, 2012 . . . . .	\$ 525 pp
New Ship "Carnival Magic", Mardi Gras Week, 7 Nights, Western Caribbean Cruise, Feb. 3, 2013 . . . . .	\$ 656 pp
Alaska, 7 Night Cruise, Sails from Seattle to Canada and Alaska, June 11, 2013.	\$ 879 pp

#### Valley West Travel

623-974-2929

With over 25 Years of Travel Industry Experience

Please contact us for information on other Vacation & Cruise Specials

### CONGRATULATION RETIREES

Ralph Ayala  
June 29, 2012

Angela Neary  
July 9, 2012

Antoinette Gavazzo  
July 13, 2012

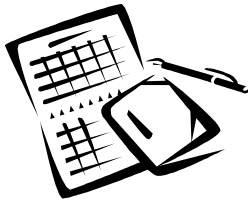
Ginger D. Quinn  
May 31, 2012

Jose F. Guzman  
July 9, 2012

Marla Wasser  
June 29, 2012

Robert Kline  
May 31, 2012





**SAVE THE DATE**

Watch for details on these upcoming COPMEA events planned for members during the 2012 calendar year!

**BIG SURF EVENT**  
September 8, 2012

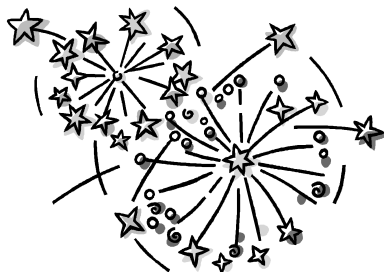
**SLIDE ROCK EVENT**  
September 15, 2012

**LAUGHLIN TRIP**  
November 10-12, 2012

**GARMENT DIST. TRIP**  
November 10-12, 2012

**SEDONA LIGHTS**  
December 15, 2012

**CHILDRENS HOLIDAY PARTY**  
December 8, 2012



# Laughlin Trip !!

Let the **PLAYER** inside You Loose!

Come Join us November 10th - 12th, 2012 for our Exciting trip to **LAUGHLIN, NV.** Where we will stay for 3 days and 2 nights at The Tropicana Express Hotel and Casino! You will also receive a Free Breakfast for One day. We will meet at The Metrocenter Transit Center, Buses will Load AT 9:00am and We will Leave at 9:30am **SHARP!**

For Single Occupant - \$170.00  
2 people per room - \$120.00  
3 people per room - \$107.00  
+ people per room - \$98.00

For **NON-MEMBERS** - \$210.00 per person  
\$50.00 deposit per person **NON-REFUNDABLE!**  
**NO REFUNDS AFTER DUE DATE!**

*Reservations Need to be **MADE & PAID IN FULL** by October 5th, 2012!*

**So come and have the most fun you can WITHOUT Breaking YOUR BANK!**

You May Bring snacks and drinks on Bus. But **NO** Glass containers.

COPMEA is Not Responsible for any Lost or Stolen items and Any Un- for seen events and

Any NON-Covered Expenses on These Trips.

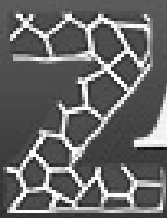
Thank You COPMEA!

## COPMEA CLASSIFIEDS

**For Rent:**

- 1) 1 Bedroom Apt, A/C, Water Included, Swimming Pool, Security Lighting, Covered Parking, Laundry Facilities on premises, No Pets. \$475.00 per month, \$100.00 Deposit required.
- 2) Studio Apartment with separate bedroom, utilities included, small kitchen, A/C, Swimming Pool, Security Lighting, Covered Parking, Laundry Facilities on premises, No Pets. \$500.00 per month, \$100.00 Deposit required.

Both apartments are located in 27th Ave. and Bethany Home Rd. Vicinity. If interested call 602 433-1809



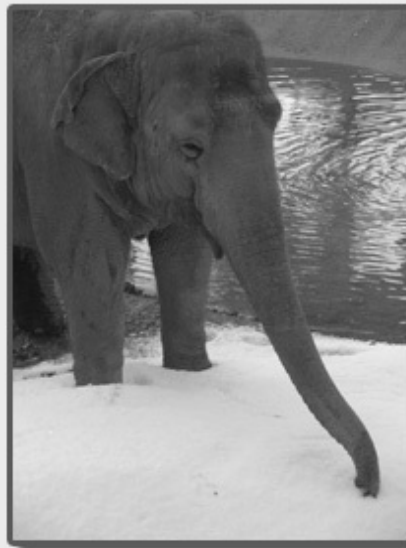
# News

# Phx Zoo

## Snow Will Fall at the Zoo in July!

**Saturday, July 21**  
7 – 11 a.m.

There is a winter storm predicted in July at the Phoenix Zoo! Take advantage of 20 tons of snow, build snowmen and practice your aim with snowballs using our spinning and twirling targets. Cool off at the Leapin' Lagoon and Yakulla Caverns water play areas and watch some of your favorite animals beat the heat with lots of snow and ice treats!



Cool off with us!



## Grab Your Glove, Catch a Game and Support Our Tigers!



**July!**

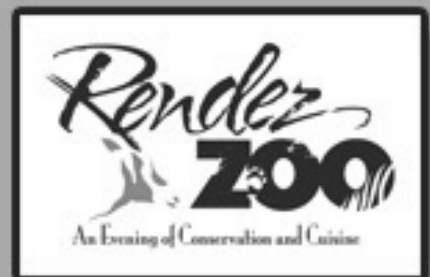
When you purchase tickets to select D-backs games in July, you not only receive a discount, but you also help support the Zoo. For each ticket you purchase, the Arizona Diamondbacks will donate \$2 to help build the Zoo's Sumatran tiger exhibit.

## Mark Your Calendar for an Unforgettable Evening!

**Saturday, October 13, 2012**  
6 – 11 p.m.

Rendez-Zoo, An Evening of Conservation and Cuisine will highlight the Zoo's 50<sup>th</sup> Anniversary with the perfect blend of exquisite cuisine, amazing entertainment and inspiring conservation successes.

## Be a part of this one-of-a-kind event.



## WE HAVE DISCOUNTS

The COPMEA Office has discounts available for many local and out of state attractions and events. For special events or quick turnaround, watch for Flyers from the COPMEA Office. Also keep an eye on Muncipals — we try to get the news to you!

LOCAL DISCOUNTS AVAILABLE	
<u>Movie Theatres</u>	
Harkins	\$ 6.00
AMC	\$ 6.00
Special Engagement (Harkins & AMC)	\$ 7.50
<u>Enchanted Island at Encanto Park</u>	
Unlimited Rides	\$ 6.00
<u>Castles and Coasters</u>	
Unlimited Rides And Golf (regular price \$30) Adult/Child (5 Hour Ticket Limit)	\$22.50
<u>Arizona Science Center</u>	
General Admission	\$18.00
<u>Phoenix Zoo</u>	
Adult (Reg. \$16.00)	\$13.00
Child	\$ 7.00
<u>Wildlife World Zoo &amp; Aquarium</u> (gate price \$29/\$15)	
Adults	\$22.00
Child (3-12)	\$10.00
<u>Out of Africa</u> (gate price \$36/\$20)	
Adults	\$18.00
Child (3-12)	\$10.00
<u>Desert Botanical Gardens</u>	
Adults	\$15.00
Child (3-12)	\$ 5.00
<u>Arizona Sea Life Aquarium, Arizona Mills</u>	
Reg price - Adult \$18.50 and Child \$10.50	\$10.00
<u>Sunsplash</u> (gate price \$30.52)	\$20.00
<u>Wet and Wild</u> (gate price Adult 36.99, Child \$29.99 plus tax)	\$29.00
<u>Big Surf</u> (gate \$26.95)	\$19.00

SOUTHERN CALIFORNIA TICKETS	
CALIFORNIA DISCOUNT TICKETS FOR MEMBERS TICKETS ARE AVAILABLE AT COPMEA OFFICE <b>All tickets are subject to change without Notice!</b>	
<u>Seaworld Single Day</u> <span style="float: right;">\$48.00</span>	
Fun Card through June 30	\$60.00
Fun Card July 1-Sept. 30	\$68 Adult/\$60 Child
(gate price \$73 Adult/\$65 Child)	
<u>Universal Studios</u> ( <b>Must be paid by debit/credit card</b> )	
<i>All Prices Shown are Adult or Child</i>	
3 Day Pass (gate \$80)	\$ 69.00
Annual Pass (gate \$99)	\$ 80.00
Front of Line Tickets	\$129.00
<u>Six Flags Magic Mountain</u>	
All Tickets Adult/Child	\$32.00
(gate price \$62.99 Adult/\$36.99 Child)	
<u>Hurricane Harbor</u>	
All Tickets Adult/Child	\$23.00
(gate price \$37.99)	
<u>San Diego Zoo</u>	
Adults (gate price \$42)	\$34.00
Child 3-11 (gate price \$32)	\$26.00
<u>San Diego Wild Animal Park</u>	
Adults (gate price \$42)	\$34.00
Child 3-11 (gate price \$32)	\$26.00
<u>Legoland</u> (2 Day Ticket)	
Adult and Child	\$56.00
(gate price adults \$72, child 3-12 \$62)	
<u>Legoland and Sea Life Aquarium Resort Hopper Ticket</u>	
Adults and Child	\$66.00
(gate price adults \$95, child 3-12 \$85)	
<u>Knotts Berry Farm</u> ( <i>can be purchased with debit/credit</i> ) ( <i>Please note there is a \$5 fee for online ordering</i> )	
Adult 12+ (gate price \$57.00)	\$31.99
Child (gate price \$28.99)	\$21.99
Season Pass Adult/Child (gate price \$69.99)	\$64.99
<u>Knotts Soak City</u>	
Adult 12+ (gate price \$32.99)	\$24.99
Child (gate price \$22.99)	\$19.99



**REMEMBER TO CHECK  
WITH THE COPMEA  
OFFICE FOR OTHER  
DISCOUNTS  
WHICH MAY BE  
AVAILABLE**

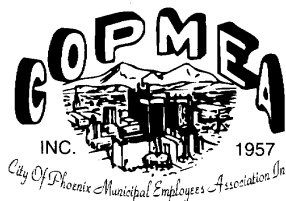
All Ticket Prices are subject to Change without Notice  
COPMEA may also sell tickets for events at the America West Arena  
Call the COPMEA Office at 262-6857 for further details.

**IMPORTANT NOTE:** COPMEA trips outside of the United States,  
**Require a passport NO EXCEPTIONS.**

### Busch Entertainment Corporation

Discounts are also available from the Busch Entertainment Corporation for Adventure Island Tampa, Busch Garden Tampa, Sesame Place, SeaWorld Orlando, SeaWorld San Antonio, SeaWorld Orlando & Aquatica, Busch Gardens Williamsburg, and Water Country USA.

Please call the COPMEA Office for details.



COPMEA MUNICIPALS (USPS 922-880) is published monthly for \$6.00 per year by the City of Phoenix Municipal Employees Association, 135 North 2nd Avenue, Suite B-5, Phoenix, AZ 85003.

POSTMASTER

Send address corrections to

COPMEA

Periodicals Postage Paid

## COPMEA Newsletter

135 North 2nd Avenue  
Suite B-5  
Phoenix, AZ 85003  
Phone: 602-262-6858  
Fax: 602-534-1964

**DISCLAIMER:** ACCEPTANCE OF ADVERTISING IN MUNICIPALS DOES **NOT** CONSTITUTE AN ENDORSEMENT BY COPMEA OF THE GOODS OR SERVICES OFFERED.

### OFFICE INFO

COPMEA members, the Office Staff ask that you please remember:

- Credit and debit cards will be accepted **ONLY** for Disneyland or Universal Studios. All other transactions are cash or check.
- **There is a \$50.00 fee for all returned checks.** *(New)*
- Please have your COPMEA cards ready when making any purchases.
- Report any changes in membership and address changes to the office.
- Tickets for monthly events are restricted to your membership and your COPMEA card is required to purchase tickets.
- Please keep in mind when making vacation plans to purchase your tickets to any of the California amusement parks as far in advance as possible as there is a **limited** supply on hand.
- E-mail the Office or visit the website at [www.copmea.com](http://www.copmea.com)

The Office is issuing new COPMEA cards with employee ID numbers. Please check your cards. If your social security number is on your card, please bring it by the office and we will be happy to issue you a new card.



### ASSOCIATE MEMBERSHIP

The Associate Memberships are as follows:

The dues for a Single Associate Membership is \$48.00 and \$96.00 for a Family Associate Membership. This fee is payable yearly.

This membership fee will entitle you to all membership benefits consisting of:

- \*Receiving Monthly Municipals
- \*Ability to purchase discounted tickets
- \*Attend monthly membership meetings
- \*Attend monthly events

If you choose an Associate Membership please remit your yearly dues along with your completed membership application card to Copmea 101 S. Central Ave. #610 Phoenix, AZ 85004. Also please check out our web page at [www.copmea.com](http://www.copmea.com)

Non-payment of dues will result in a forfeit of all membership privileges.

Should you have any questions, please contact the COPMEA office at (602) 262-6858.

### SPECIAL NOTE

Municipals is longer being individually mailed to the members. The newsletter may be accessed online at the COPMEA website, [www.COPMEA.com](http://www.COPMEA.com). The newsletter will continue to be mailed to retirees.