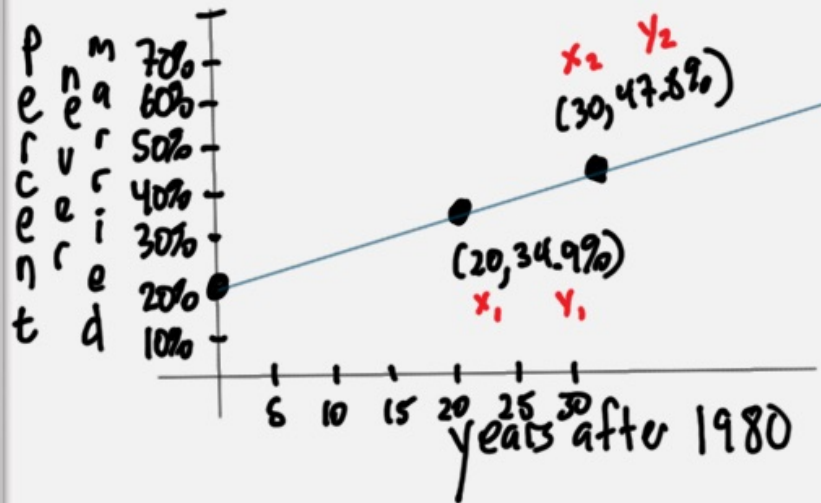


Pg 214 #87



$$\begin{aligned}
 b) \quad (y - 38.9) &= 0.89(x - 20) \\
 y - 38.9 &= 0.89x - 17.8 \\
 + 38.9 & \qquad \qquad + 38.9 \\
 \hline
 y &= 0.89x + 21.1
 \end{aligned}$$

$$F(x) = 0.89x + 21.1$$

$$c) \quad F(40) = 0.89(40) + 21.1$$

$F(40) = 56.7$ in the year 2020
56.7% females will ever married.

$$\begin{aligned}
 a) \quad m &= \frac{y_2 - y_1}{x_2 - x_1} = \frac{47.8 - 38.9}{30 - 20} = \frac{8.9}{10} = 0.89
 \end{aligned}$$

slope meaning the % of females born after 1980 increases 0.89% per year.

$$(y_2 - y_1) = m(x_2 - x_1)$$

$$(y - 38.9) = 0.89(x - 20)$$

