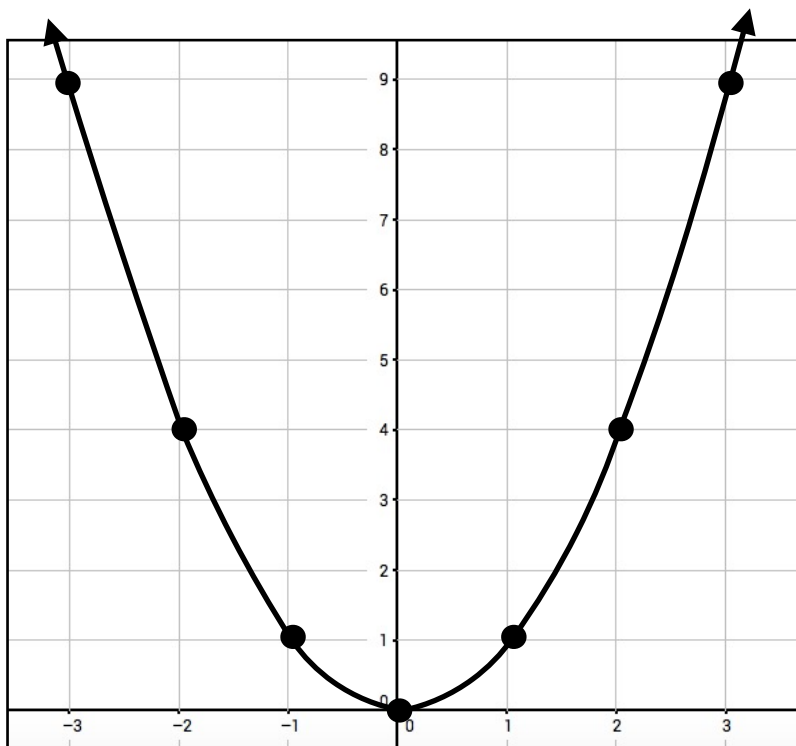


Observation # 5 - What I observed

Going from $f(x)$ to $2f(x)$

- The parabola's shape got...

- All the ***Y-values*** of the parabola are _____ the amount of the original.

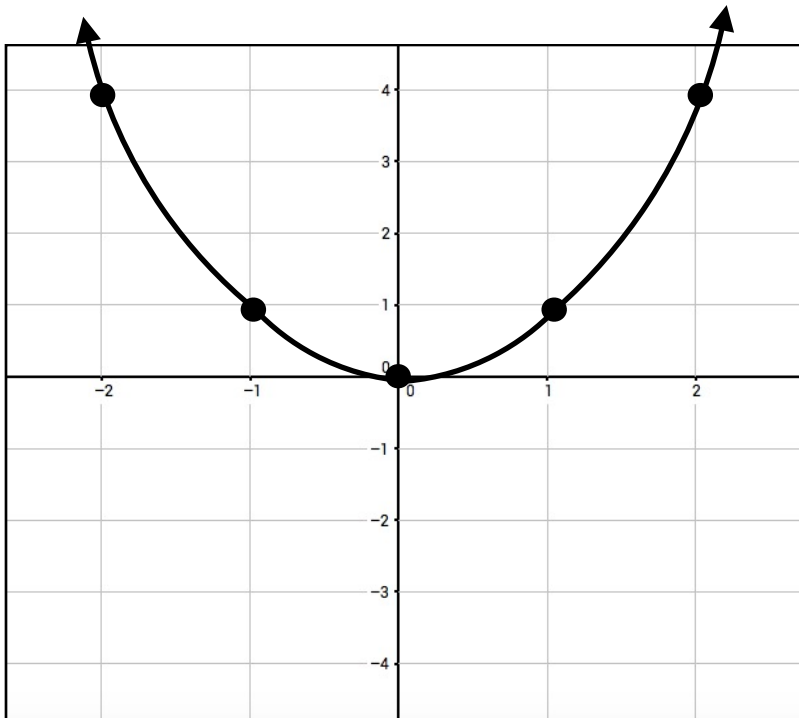


Observation # 6 - What I observed

Going from $f(x)$ to $.5f(x)$

- The parabola's shape got...

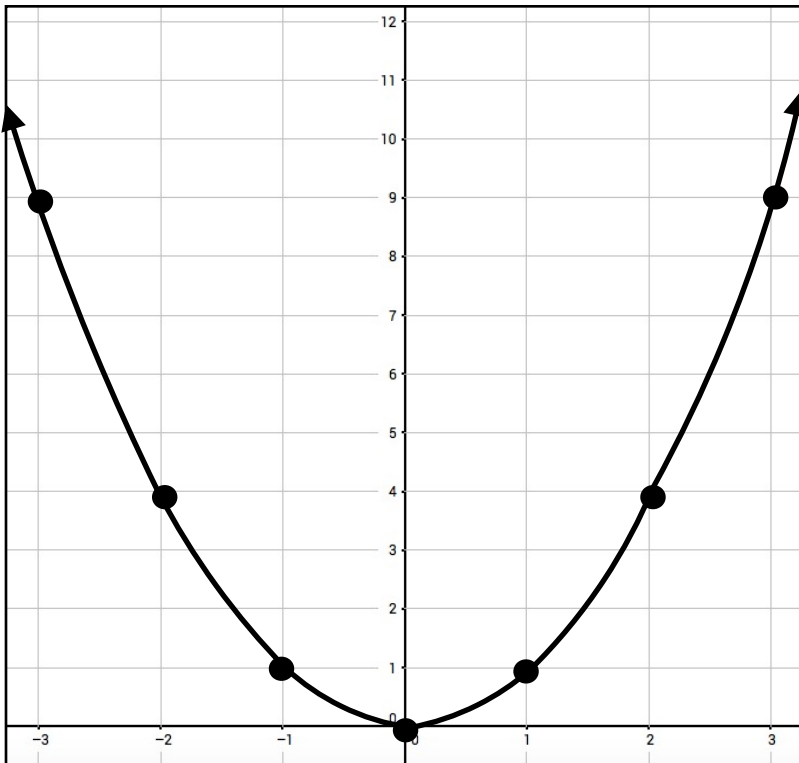
- All the ***Y-values*** of the parabola are _____ the amount of the original.



Observation # 7 - What I observed
 Going from $f(x)$ to $-f(x)$

- The parabola's shape got...

- All the **Y-values** of the parabola are _____ the amount of the original.



Observation # 8 - What I observed
 Going from $f(x)$ to $f(2x)$

- The parabola's shape got...

- All the **X-values** of the parabola are _____ the amount of the original.

CAREFUL!!!!