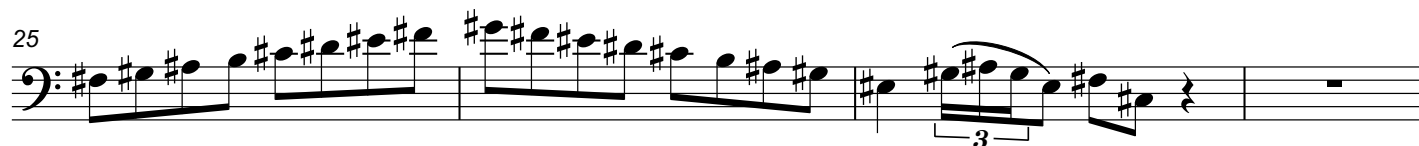
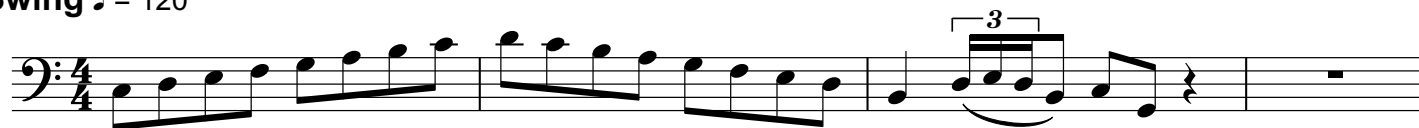


Bass

Jazz Scale Routine

Swing ♩ = 120





73

Musical notation for measure 73, bass clef, key of D major. The measure contains a sequence of eighth and sixteenth notes, a triplet of eighth notes, and a quarter rest.

77

77

81

81

85

89 

93 

97 **Harmonic Minor**

Musical notation for the Harmonic Minor scale, measure 97. The scale is in bass clef, starting on G2. The notes are G2, A2, Bb2, C3, D3, Eb3, F3, G3. The final G3 is marked with a triplet bracket and a '3' above it. The measure ends with a whole rest.

101

Musical notation for exercise 101, bass clef, 12/8 time signature. The melody consists of eighth and sixteenth notes, ending with a triplet of eighth notes.

105

Musical notation for measure 105, bass clef. The melody consists of eighth and quarter notes with various accidentals (flats and sharps). A triplet of eighth notes is marked with a '3' and a bracket. The measure ends with a whole rest.

Bass Scale Routine

109 

113

Musical notation for exercise 113, bass clef, 3/4 time. The melody consists of eighth and sixteenth notes with various accidentals (sharps, naturals, flats). A triplet of eighth notes is marked with a '3' and a bracket. The exercise ends with a whole rest.

117

117

121

121

125

Musical notation for measure 125, bass clef. The melody consists of eighth and sixteenth notes with various accidentals, ending with a triplet of eighth notes (F4, E4, D4) beamed together.

129

Measure 129 in the bass clef. The melody consists of eighth and sixteenth notes, including a triplet of eighth notes marked with a '3' and a bracket. The measure ends with a quarter rest.

133

Musical notation for exercise 133, bass clef, 8/8 time. The melody consists of eighth and sixteenth notes with various accidentals, ending with a triplet of eighth notes.

137

137

141

Musical notation for measure 141 in the bass clef. The melody consists of eighth notes: G2, A2, B2, C3, D3, E3, F#3, G#3, A#3, B4, A4, G4, F#4, E4, D4, C4, B3, A3, G3, F#3, E3, D3, C3, B2, A2, G2. There is a triplet of eighth notes (G#3, A#3, B4) starting at the 16th beat. The measure ends with a whole rest.

Jazz Melodic Minor

145

[illegible]

153

Musical notation for measure 153, bass clef. The melody consists of eighth and sixteenth notes, including a triplet of eighth notes marked with a '3' and a slur.

157

Musical notation for measure 157, bass clef, key of B-flat major. The measure contains a sequence of eighth and sixteenth notes, including a triplet of eighth notes marked with a '3' and a slur.

161

Musical notation for measure 161, bass clef. The melody consists of eighth and sixteenth notes with various accidentals (sharps and naturals). A triplet of eighth notes is marked with a '3' and a bracket. The measure ends with a whole rest.

165

165

169

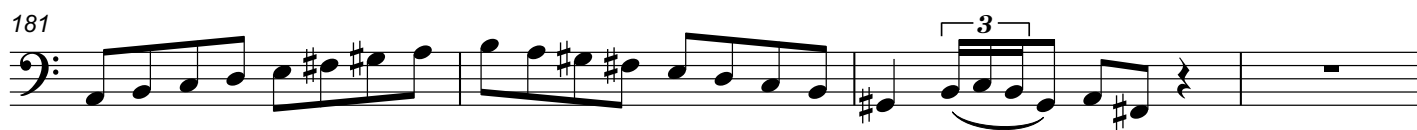
169

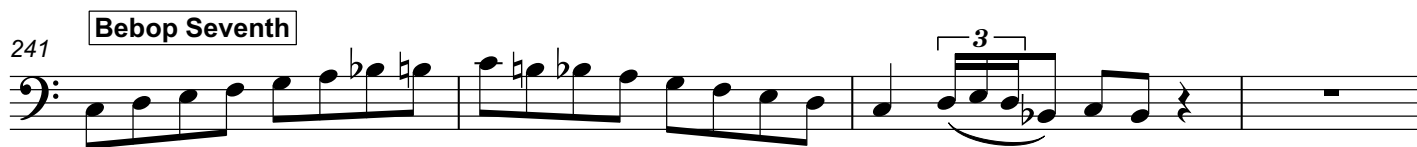
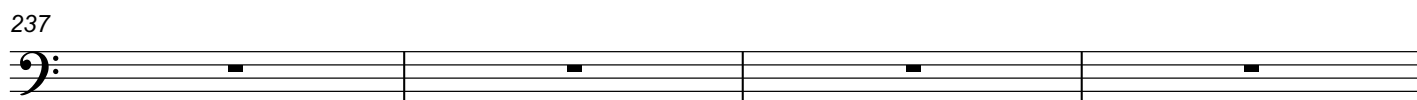
173

Musical notation for exercise 173, bass clef, 4/4 time. The melody consists of eighth and quarter notes with a triplet of eighth notes in the final measure.

177

177





Bass Scale Routine

253

Exercise 253 is a short piece in the bass clef, key of B-flat major. It consists of a single line of music. The melody is written in eighth and sixteenth notes, with various accidentals (flats and naturals). The piece ends with a triplet of eighth notes.

257

Measure 257 (Bass Clef): The measure begins with a half note G2, followed by a quarter note A2, and a quarter note B2. This is followed by a quarter note C3, a quarter note D3, and a quarter note E3. The next part of the measure consists of a quarter note F3, a quarter note G3, and a quarter note A3. This is followed by a quarter note B3, a quarter note C4, and a quarter note D4. The measure concludes with a quarter note E4, a quarter note F4, and a quarter note G4. A triplet of eighth notes (F4, G4, A4) is indicated by a bracket and the number 3.

261

261

265

265

269

269

273



277

281

Musical notation for measure 281, bass clef, key of B-flat major. The measure contains a sequence of eighth and sixteenth notes, ending with a triplet of eighth notes.

285

Diminished 1/2, W

[illegible]

293

Exercise 293 is a short piece in bass clef, 3/4 time. The melody is written on a single staff and consists of eighth and sixteenth notes. It begins with a half note G2, followed by a quarter note A2, then a half note B2. The next measure contains a quarter note C3, a quarter note D3, and a quarter note E3. The third measure has a quarter note F3, a quarter note G3, and a quarter note A3. The fourth measure contains a quarter note B3, a quarter note C4, and a quarter note D4. The fifth measure has a quarter note E4, a quarter note F4, and a quarter note G4. The sixth measure contains a quarter note A4, a quarter note B4, and a quarter note C5. The seventh measure has a quarter note D5, a quarter note E5, and a quarter note F5. The eighth measure contains a quarter note G5, a quarter note A5, and a quarter note B5. The ninth measure has a quarter note C6, a quarter note D6, and a quarter note E6. The tenth measure contains a quarter note F6, a quarter note G6, and a quarter note A6. The eleventh measure has a quarter note B6, a quarter note C7, and a quarter note D7. The twelfth measure contains a quarter note E7, a quarter note F7, and a quarter note G7. The thirteenth measure has a quarter note A7, a quarter note B7, and a quarter note C8. The fourteenth measure contains a quarter note D8, a quarter note E8, and a quarter note F8. The fifteenth measure has a quarter note G8, a quarter note A8, and a quarter note B8. The sixteenth measure contains a quarter note C9, a quarter note D9, and a quarter note E9. The seventeenth measure has a quarter note F9, a quarter note G9, and a quarter note A9. The eighteenth measure contains a quarter note B9, a quarter note C10, and a quarter note D10. The nineteenth measure has a quarter note E10, a quarter note F10, and a quarter note G10. The twentieth measure contains a quarter note A10, a quarter note B10, and a quarter note C11. The twenty-first measure has a quarter note D11, a quarter note E11, and a quarter note F11. The twenty-second measure contains a quarter note G11, a quarter note A11, and a quarter note B11. The twenty-third measure has a quarter note C12, a quarter note D12, and a quarter note E12. The twenty-fourth measure contains a quarter note F12, a quarter note G12, and a quarter note A12. The twenty-fifth measure has a quarter note B12, a quarter note C13, and a quarter note D13. The twenty-sixth measure contains a quarter note E13, a quarter note F13, and a quarter note G13. The twenty-seventh measure has a quarter note A13, a quarter note B13, and a quarter note C14. The twenty-eighth measure contains a quarter note D14, a quarter note E14, and a quarter note F14. The twenty-ninth measure has a quarter note G14, a quarter note A14, and a quarter note B14. The thirtieth measure contains a quarter note C15, a quarter note D15, and a quarter note E15. The thirty-first measure has a quarter note F15, a quarter note G15, and a quarter note A15. The thirty-second measure contains a quarter note B15, a quarter note C16, and a quarter note D16. The thirty-third measure has a quarter note E16, a quarter note F16, and a quarter note G16. The thirty-fourth measure contains a quarter note A16, a quarter note B16, and a quarter note C17. The thirty-fifth measure has a quarter note D17, a quarter note E17, and a quarter note F17. The thirty-sixth measure contains a quarter note G17, a quarter note A17, and a quarter note B17. The thirty-seventh measure has a quarter note C18, a quarter note D18, and a quarter note E18. The thirty-eighth measure contains a quarter note F18, a quarter note G18, and a quarter note A18. The thirty-ninth measure has a quarter note B18, a quarter note C19, and a quarter note D19. The fortieth measure contains a quarter note E19, a quarter note F19, and a quarter note G19. The forty-first measure has a quarter note A19, a quarter note B19, and a quarter note C20. The forty-second measure contains a quarter note D20, a quarter note E20, and a quarter note F20. The forty-third measure has a quarter note G20, a quarter note A20, and a quarter note B20. The forty-fourth measure contains a quarter note C21, a quarter note D21, and a quarter note E21. The forty-fifth measure has a quarter note F21, a quarter note G21, and a quarter note A21. The forty-sixth measure contains a quarter note B21, a quarter note C22, and a quarter note D22. The forty-seventh measure has a quarter note E22, a quarter note F22, and a quarter note G22. The forty-eighth measure contains a quarter note A22, a quarter note B22, and a quarter note C23. The forty-ninth measure has a quarter note D23, a quarter note E23, and a quarter note F23. The fiftieth measure contains a quarter note G23, a quarter note A23, and a quarter note B23. The fifty-first measure has a quarter note C24, a quarter note D24, and a quarter note E24. The fifty-second measure contains a quarter note F24, a quarter note G24, and a quarter note A24. The fifty-third measure has a quarter note B24, a quarter note C25, and a quarter note D25. The fifty-fourth measure contains a quarter note E25, a quarter note F25, and a quarter note G25. The fifty-fifth measure has a quarter note A25, a quarter note B25, and a quarter note C26. The fifty-sixth measure contains a quarter note D26, a quarter note E26, and a quarter note F26. The fifty-seventh measure has a quarter note G26, a quarter note A26, and a quarter note B26. The fifty-eighth measure contains a quarter note C27, a quarter note D27, and a quarter note E27. The fifty-ninth measure has a quarter note F27, a quarter note G27, and a quarter note A27. The sixtieth measure contains a quarter note B27, a quarter note C28, and a quarter note D28. The sixty-first measure has a quarter note E28, a quarter note F28, and a quarter note G28. The sixty-second measure contains a quarter note A28, a quarter note B28, and a quarter note C29. The sixty-third measure has a quarter note D29, a quarter note E29, and a quarter note F29. The sixty-fourth measure contains a quarter note G29, a quarter note A29, and a quarter note B29. The sixty-fifth measure has a quarter note C30, a quarter note D30, and a quarter note E30. The sixty-sixth measure contains a quarter note F30, a quarter note G30, and a quarter note A30. The sixty-seventh measure has a quarter note B30, a quarter note C31, and a quarter note D31. The sixty-eighth measure contains a quarter note E31, a quarter note F31, and a quarter note G31. The sixty-ninth measure has a quarter note A31, a quarter note B31, and a quarter note C32. The seventieth measure contains a quarter note D32, a quarter note E32, and a quarter note F32. The seventy-first measure has a quarter note G32, a quarter note A32, and a quarter note B32. The seventy-second measure contains a quarter note C33, a quarter note D33, and a quarter note E33. The seventy-third measure has a quarter note F33, a quarter note G33, and a quarter note A33. The seventy-fourth measure contains a quarter note B33, a quarter note C34, and a quarter note D34. The seventy-fifth measure has a quarter note E34, a quarter note F34, and a quarter note G34. The seventy-sixth measure contains a quarter note A34, a quarter note B34, and a quarter note C35. The seventy-seventh measure has a quarter note D35, a quarter note E35, and a quarter note F35. The seventy-eighth measure contains a quarter note G35, a quarter note A35, and a quarter note B35. The seventy-ninth measure has a quarter note C36, a quarter note D36, and a quarter note E36. The eightieth measure contains a quarter note F36, a quarter note G36, and a quarter note A36. The eighty-first measure has a quarter note B36, a quarter note C37, and a quarter note D37. The eighty-second measure contains a quarter note E37, a quarter note F37, and a quarter note G37. The eighty-third measure has a quarter note A37, a quarter note B37, and a quarter note C38. The eighty-fourth measure contains a quarter note D38, a quarter note E38, and a quarter note F38. The eighty-fifth measure has a quarter note G38, a quarter note A38, and a quarter note B38. The eighty-sixth measure contains a quarter note C39, a quarter note D39, and a quarter note E39. The eighty-seventh measure has a quarter note F39, a quarter note G39, and a quarter note A39. The eighty-eighth measure contains a quarter note B39, a quarter note C40, and a quarter note D40. The eighty-ninth measure has a quarter note E40, a quarter note F40, and a quarter note G40. The ninetieth measure contains a quarter note A40, a quarter note B40, and a quarter note C41. The hundredth measure has a quarter note D41, a quarter note E41, and a quarter note F41. The hundred-first measure contains a quarter note G41, a quarter note A41, and a quarter note B41. The hundred-second measure has a quarter note C42, a quarter note D42, and a quarter note E42. The hundred-third measure contains a quarter note F42, a quarter note G42, and a quarter note A42. The hundred-fourth measure has a quarter note B42, a quarter note C43, and a quarter note D43. The hundred-fifth measure contains a quarter note E43, a quarter note F43, and a quarter note G43. The hundred-sixth measure has a quarter note A43, a quarter note B43, and a quarter note C44. The hundred-seventh measure contains a quarter note D44, a quarter note E44, and a quarter note F44. The hundred-eighth measure has a quarter note G44, a quarter note A44, and a quarter note B44. The hundred-ninth measure contains a quarter note C45, a quarter note D45, and a quarter note E45. The hundred-tieth measure has a quarter note F45, a quarter note G45, and a quarter note A45. The hundred-first measure contains a quarter note B45, a quarter note C46, and a quarter note D46. The hundred-second measure has a quarter note E46, a quarter note F46, and a quarter note G46. The hundred-third measure contains a quarter note A46, a quarter note B46, and a quarter note C47. The hundred-fourth measure has a quarter note D47, a quarter note E47, and a quarter note F47. The hundred-fifth measure contains a quarter note G47, a quarter note A47, and a quarter note B47. The hundred-sixth measure has a quarter note C48, a quarter note D48, and a quarter note E48. The hundred-seventh measure contains a quarter note F48, a quarter note G48, and a quarter note A48. The hundred-eighth measure has a quarter note B48, a quarter note C49, and a quarter note D49. The hundred-ninth measure contains a quarter note E49, a quarter note F49, and a quarter note G49. The hundred-tieth measure has a quarter note A49, a quarter note B49, and a quarter note C50. The hundred-first measure contains a quarter note D50, a quarter note E50, and a quarter note F50. The hundred-second measure has a quarter note G50, a quarter note A50, and a quarter note B50. The hundred-third measure contains a quarter note C51, a quarter note D51, and a quarter note E51. The hundred-fourth measure has a quarter note F51, a quarter note G51, and a quarter note A51. The hundred-fifth measure contains a quarter note B51, a quarter note C52, and a quarter note D52. The hundred-sixth measure has a quarter note E52, a quarter note F52, and a quarter note G52. The hundred-seventh measure contains a quarter note A52, a quarter note B52, and a quarter note C53. The hundred-eighth measure has a quarter note D53, a quarter note E53, and a quarter note F53. The hundred-ninth measure contains a quarter note G53, a quarter note A53, and a quarter note B53. The hundred-tieth measure has a quarter note C54, a quarter note D54, and a quarter note E54. The hundred-first measure contains a quarter note F54, a quarter note G54, and a quarter note A54. The hundred-second measure has a quarter note B54, a quarter note C55, and a quarter note D55. The hundred-third measure contains a quarter note E55, a quarter note F55, and a quarter note G55. The hundred-fourth measure has a quarter note A55, a quarter note B55, and a quarter note C56. The hundred-fifth measure contains a quarter note D56, a quarter note E56, and a quarter note F56. The hundred-sixth measure has a quarter note G56, a quarter note A56, and a quarter note B56. The hundred-seventh measure contains a quarter note C57, a quarter note D57, and a quarter note E57. The hundred-eighth measure has a quarter note F57, a quarter note G57, and a quarter note A57. The hundred-ninth measure contains a quarter note B57, a quarter note C58, and a quarter note D58. The hundred-tieth measure has a quarter note E58, a quarter note F58, and a quarter note G58. The hundred-first measure contains a quarter note A58, a quarter note B58, and a quarter note C59. The hundred-second measure has a quarter note D59, a quarter note E59, and a quarter note F59. The hundred-third measure contains a quarter note G59, a quarter note A59, and a quarter note B59. The hundred-fourth measure has a quarter note C60, a quarter note D60, and a quarter note E60. The hundred-fifth measure contains a quarter note F60, a quarter note G60, and a quarter note A60. The hundred-sixth measure has a quarter note B60, a quarter note C61, and a quarter note D61. The hundred-seventh measure contains a quarter note E61, a quarter note F61, and a quarter note G61. The hundred-eighth measure has a quarter note A61, a quarter note B61, and a quarter note C62. The hundred-ninth measure contains a quarter note D62, a quarter note E62, and a quarter note F62. The hundred-tieth measure has a quarter note G62, a quarter note A62, and a quarter note B62. The hundred-first measure contains a quarter note C63, a quarter note D63, and a quarter note E63. The hundred-second measure has a quarter note F63, a quarter note G63, and a quarter note A63. The hundred-third measure contains a quarter note B63, a quarter note C64, and a quarter note D64. The hundred-fourth measure has a quarter note E64, a quarter note F64, and a quarter note G64. The hundred-fifth measure contains a quarter note A64, a quarter note B64, and a quarter note C65. The hundred-sixth measure has a quarter note D65, a quarter note E65, and a quarter note F65. The hundred-seventh measure contains a quarter

297

Exercise 297 is a short piece in bass clef, 4/4 time. The melody is written on a single staff. It begins with a series of eighth and sixteenth notes, some with sharps and flats. The piece concludes with a triplet of eighth notes.

301

301

305

305

309

309

Musical notation for measure 309, bass clef. The measure contains a sequence of eighth and sixteenth notes, including a triplet of eighth notes.

313

3

317

317

321

Measures 321-323 of the piece. Measure 321: Bass clef, key signature of one flat (B-flat), 4/4 time. The melody consists of eighth notes: B-flat, A, G, F, E, D, C, B-flat. Measure 322: Bass clef, key signature of one flat. The melody consists of eighth notes: B-flat, A, G, F, E, D, C, B-flat. Measure 323: Bass clef, key signature of one flat. The melody consists of eighth notes: B-flat, A, G, F, E, D, C, B-flat. A triplet of eighth notes (B-flat, A, G) is marked with a bracket and the number 3. The piece ends with a whole rest.

361



365



369



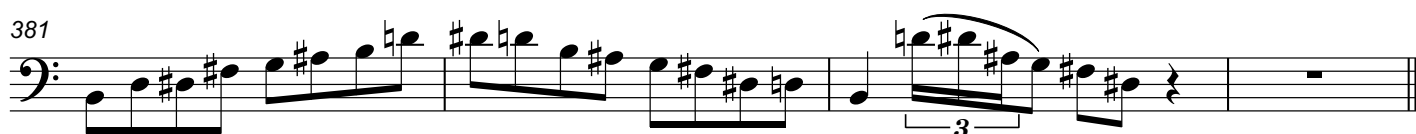
373



377



381



385

Whole Tone



389



393





Altered (Diminished Whole Tone)

