



239

239

**A Rococo style silver oval footed figural center bowl  
Marked Psari, modern**

*height 14in (36cm); length over handles 25in (64cm); weight approximately 145oz troy*

**\$1,500/2,000**

240

**A French silverplated oval footed jardinière  
By Christofle, Paris, late 19th/first quarter 20th century**

*With liner  
height 3 1/2in (9cm); length 14 1/2in (37cm); depth 12in (30.5cm)*

**\$500/700**



240



241

241

**A Hungarian stone-inset and enamelled silver-gilt table clock**

**Apparently unmarked, 20th century**

*height 10in (25.5cm); width 5 1/2in (14cm); depth 4 3/4in (12cm)*

**\$1,000/1,500**

242

**An Italian sterling silver covered two handle tureen and stand**

**By Fratelli Cacchione, Milan, 20th century**  
*total weight approximately 74oz troy; overall height 6in (15.25cm); length over handles 14in (35.5cm); diameter of stand 13 1/4in (33.5cm)*

**\$800/1,200**



242



243

243

**A French first standard silver and verde antico marble figural centerpiece trophy  
Signed Froment Meurice, Paris; applied letter mounts marked for Hunt & Roskell,  
London, 1880**

Monaco Grand Prix shooting award won by E.R.G. Hopwood, 1879  
*height 14 1/2in (37cm); width 19in (28.25cm); depth 13 3/4in (35cm)*

**\$8,000/12,000**



244

244

**A suite of three graduated silver figural repousse  
decorated table top picture frames  
Marked RC 925, modern**

In the Victorian style  
*the largest height 15in (38cm); width 12 1/4in (31cm)*

**\$800/1,200**



245

245

**Two silverplate and cut glass figural tazze  
After a model by Roberts & Belk, modern**

*height 12 3/4in (32.5cm); diameter 9 3/4in (24.75cm)*

**\$300/500**



246

246  
**An American sterling silver five piece tea and coffee service**  
**By Gorham Mfg. Co., Providence, RI, 1941-42**  
 Puritan pattern, comprising: a teapot, a coffee pot, a cream jug, a covered sugar bowl and a waste bowl, monogram: ESP  
*total weight approximately 69oz troy; the coffee pot height 10 1/2in (26.5cm); length 9 3/4in (24.75cm)*

**\$700/900**

247  
**Three pieces of American sterling silver hollowware**  
**By various makers, 20th century**  
 Comprising: a footed bowl, a reticulated galleried cake stand and a short footed cake stand, the stands monogrammed  
*total weight approximately 38oz troy; the bowl height 4in (10cm); diameter 9in (23cm)*

**\$400/600**



247



248

248  
**Two American copper and sterling silver presentation trophy cups**  
**First quarter 20th century**  
 One by Heinz Art Metal Shop, Buffalo, NY, retailed by Shreve, Treat & Eacret, San Francisco, CA, a Marshall Dill golf trophy with inscriptions from 1924-1927; the other by Reed & Barton, Taunton, MA, Aviation Country Club Second Annual Polo Ponies Show 1925  
*the larger height 17in (43cm)*

**\$1,200/1,800**



249  
**An American sterling silver flatware service**  
**By International Silver Co., Meriden, CT, 20th century**  
 Fontaine pattern, comprising 12 dinner forks, 12 dinner knives, 12 salad forks, 12 round bowl soup spoons, 12 butter spreaders, 11 teaspoons, 12 citrus spoons, 12 iced teaspoons, 12 ice cream forks, 12 tablespoons and 12 serving pieces, monogram. SGH (131)  
*total weighable silver approximately 145oz troy*

**\$2,000/3,000**



249 (Part Lot)

250

**A George IV sterling silver tea urn  
By Barnard Bros., London, 1829**

Engraved with a heraldic crest and coat-of-arms  
weight approximately 169oz troy; height 16in  
(40.5cm); width over handles 15in (38cm); depth  
15 1/2in (39.5cm)

**\$3,000/5,000**



250

251

**A Regency circular footed salver  
By Benjamin Smith III, London, 1819**

With floral encrusted rim, engraved with a coat-  
of-arms  
diameter 12 1/2in (32cm); weight approximately  
35oz troy

**\$1,200/1,800**



251

252

**A pair of George III sterling silver  
candlesticks**

**Maker's mark TH, London, 1798**  
height 6 1/4in (16cm); total weight approximately  
11oz troy

**\$300/500**



252

253

**An American sterling silver part flatware  
service for six  
By International Silver Co., Meriden, CT,  
20th century**

1810 pattern, comprising: 6 luncheon forks, 12  
luncheon knives, 6 salad/dessert forks, 12 round  
bowl soup spoons, 12 butter spreaders and 6  
teaspoons, initial: A (54)  
total weighable silver approximately 47oz troy

**\$600/800**



253 (Part Lot)



254

254  
**Two Mexican silverplate, mixed metal and stone hollowwares**

**By Los Castillos, Taxco, 20th century**

Comprising: an oval pond form bowl mounted with frogs and a honey pot with spoon; together with a similar oval silverplate bowl, 4pcs  
*the largest height 5in (12.75cm); length 20in (51cm); depth 12 1/2in (31.75cm)*

**\$300/500**



255

255  
**Four Continental gilt metal, composition and horn snuff boxes**  
**18th-19th century**

Comprising: one Swiss box with miniature of doves at an altar; a French box portrait miniature of a woman, signature partially visible, a rectangular horn box portrait miniature of an officer and a gilt metal circular box  
*the largest box height 1 1/4in (3cm); diameter 3in (7.5cm)*

**\$800/1,200**



256

256  
**A collection of eight English and French silver boxes**  
**19th-20th century**

Comprising: a graduated pair of French parcel gilt box, an enamel box, a folio form box with French import mark, three English boxes, Birmingham, and a scent bottle, some monogrammed  
*Total silver weight approximately 7oz troy; the largest box length 2 7/8in (7.25cm)*

**\$300/500**

257  
**An assembled collection of eleven International silver and silverplate tabletop picture frames**  
**By various makers, 20th century**

*the largest height 11 1/2in (29cm); width 9 1/2in (24cm)*

**\$400/600**



257

258

**An American sterling silver part flatware service  
By Gorham Mfg. Co., Providence, RI, early 20th century**

St. Dunstan Chased pattern, comprising: 1 dinner fork, 10 dinner knives, 1 luncheon fork, 2 luncheon knives, 2 fish forks, 6 salad/dessert forks, 8 cocktail forks, 6 butter spreaders, 4 gumbo spoons, 12 teaspoons, 4 five o'clock teaspoons, 5 ice cream forks, 7 demitasse spoons, 4 piece carving set, initial: B (72)

*total weighable silver approximately 57oz troy*

**\$700/900**

259

**Three pieces of sterling silver hollowware  
By various makers, 20th century**

Comprising: Mexican sterling silver table basket and a plate and a Galt & Bro. pitcher  
*total weight approximately 49oz troy; height of table basket 9 1/2in (24cm)*

**\$600/800**

260

**A Victorian silverplate two-handled footed meat platter and dome**

**By Elkington & Co., Birmingham, 1847**  
*overall height 15 1/2in (39.5cm); length 25in (63.5cm); depth 18 1/2in (47cm)*

**\$600/800**

261

**A Continental silverplate sleigh form jardinière  
Apparently unmarked, late 19th/early 20th century**

*height 11in (28cm); length 14 1/2in (37cm)*

**\$300/500**



258 (part lot)



259



260



261



262

262

**A Mexican sterling silver Modernist oval footed two-handle center bowl**  
**By Tango Aceves, Taxco, mid-20th century**  
*weight approximately 38oz troy; height 2 3/4in (7cm); length over handles 21 in (53.5cm)*

**\$500/700**

263

**A set of six American sterling silver goblets**  
**By International Silver Co., Meriden, CT, 20th century**  
*height 6 1/2in (16.5cm); total weight approximately 22oz troy*

**\$400/600**



263



264

264

**An American Art Deco sterling silver vase**  
**By Richard Dimes, Boston, circa 1930**  
*weight approximately 26.5oz troy; height 10in (25.5cm); diameter 4 1/2in (11.5cm)*

**\$300/500**

265

**A Four Continental Art Deco and Modernist silverplate tablewares**  
**By Folke Arström for GAB, Lino Sabatini and other makers, 20th century**

Comprising: a Folke Arström designed cocktail shaker with bakelite lid, a circular table box by GAB, a WMF napkin holder and a Lino Sabatini three tier adjustable server  
*the shaker height 8 1/2in (21.5cm); length 3 3/4in (9.5cm)*

**\$250/350**



265

266

**An American sterling silver four piece table suite  
By Hayes & McFarland, Mount Vernon, NY, circa 1910**

Comprising: two small bowls, a large bowl and a circular platter  
*the large bowl height 3in (7.5cm); diameter 14in (36cm); total  
weight approximately 139oz troy*

**\$1,200/1,800**



266



267



267

**A Continental hand hammered 830 standard  
silver Arts & Crafts oval two handled bowl  
Probably Norwegian, circa 1915**

Together with a pair of Anna Eicher Arts and  
Crafts hand hammered sterling silver salad  
servers, 3pcs

*total weight approximately 18oz troy; height 2  
1/4in (5.75cm); length 11 3/4in (30cm); depth 7  
1/4in (18.5cm)*

**\$400/600**

268

**A collection of contemporary sterling silver  
accessories By Clementi Fabbrica Argenteria,  
Bologna; retailed by Buccellati and Alastair  
Crawford, modern**

Comprising: five floral and foliate-form dishes, a shell  
form dish, two paper knives and a pair of candlesticks,  
10pcs

*total weighable silver approximately 10oz troy; height of  
candlesticks 9in (23cm); length of paper knives 11 3/4in  
(30cm)*

**\$800/1,200**



268 (Part Lot)

269

**An American sterling silver part flatware  
service for twelve  
By Reed & Barton, Taunton, MA, mid-20th  
century**

Silver Sculpture pattern, comprising: 12 dinner  
forks, 12 dinner knives, 12 salad/dessert forks, 12  
steak knives, 12 soup/dessert spoons, 13 butter  
spreaders, 6 cocktail forks, 12 teaspoons and 8  
serving pieces (99)

*total weighable silver approximately 90oz troy*

**\$1,200/1,800**



269 (part lot)





270



272



271



273



274



275

270  
**An Orientalist carved white marble bust of a noble woman**  
first half 20th century  
height 24 3/4in (63cm); width 18 1/2in (47cm); depth 11in (28cm)

\$800/1,200

271  
**Two George III mahogany knife boxes**  
fourth quarter 18th century  
One inlaid and with cutlery divides, the other converted to a letter box.  
the larger height 14 3/4in (35.5cm); width 9in (23cm); depth 12 1/2in (31.75cm)

\$300/500

272  
**A George III fret carved mahogany hanging bookshelf**  
second half 18th century  
height 23 1/4in (59cm); width 16 1/4in (41cm); depth 7 1/2in (19cm)

\$300/500

273  
**A French gilt bronze vide poche**  
Louchet Ciseleur foundry, Paris  
early 20th century  
Impressed foundry pastille.  
length 12 1/2in (31.5cm); depth 7 3/4in (19.5cm)

\$700/900

274  
**A Chinese Export gilt heightened lacquered tea caddy**  
late 19th century  
Decorated with panels of figures and birds in landscapes.  
height 5 1/4in (13.3cm); width 8 1/2in (21.5cm); depth 7in (17.8cm)

\$300/500

275  
**A Continental Neoclassical gilt bronze mounted alabaster and inlaid mahogany mantel clock**  
possibly Austrian  
early 19th century  
The circular enamel dial having Arabic numerals, the three train movement with pull repeat striking on two bells.  
height 21 1/2in (54.5cm)

\$600/800



278



276



280



277



279



281

276

**A French patinated bronze bust of a maiden**  
**late 19th century**

*height overall 16 1/4in (41.3cm)*

**\$600/800**

277

**Two Italian pietra dura panels**  
**20th century**

Each depicting a landscape, framed.  
*dimensions of largest panel 6 3/4in x 9 1/8in (17 x 23.2cm)*

**\$800/1,200**

278

**A French gilt bronze cartel timepiece**  
**late 19th century**

The backplate impressed 176.  
*height 10in (25.5cm); width 4 1/2in (11.5cm)*

**\$600/800**

279

**An Italian carved white marble bust of a Roman**  
**Galleria Romanelli, Florence**  
**late 19th century**

Inscribed to reverse, on a later turned variegated white marble socle  
*overall height 22in (71cm); width 17in (43cm); depth 10in (25.5cm)*

**\$800/1,200**

280

**A pair of French silverplate altar prickets**  
**Christofle, Paris**  
**late 19th/early 20th century**

Each marked to base  
*height 22in (56cm); width 5 1/2in (14cm)*

**\$300/500**

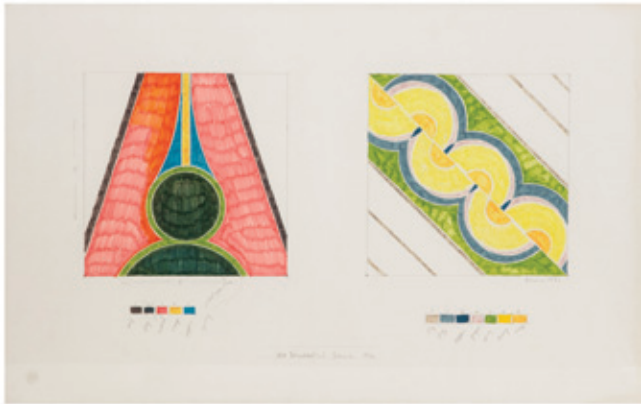
281

**A group of four assorted table boxes**  
**late 19th century**

Comprising a George III inlaid mahogany tea caddy, the hinged lid enclosing a fitted interior of two hinged lidded compartments about an aperture with glass bowl; a Victorian gilt heightened and painted decorated papier mache desk stand, fitted with two glass inkwells about a stamp box; a gilt brass mounted book form jewelry box and a gilt metal mounted coromandel box.

*dimensions of writing box 6 5/8 x 13 5/8 x 8in (16.7 x 34.5 x 20.3cm)*

**\$700/900**



282 (part lot)



282

**John Harrison Levee**

(American, 1924-2017)

**Eleven various abstract works**

Pencil and watercolor on paper; hand signed lithograph  
2 two panel sketches for banners, 5 sketches for murals and 4  
lithographs, variously signed and inscribed  
*the largest 20 1/2 x 33in (52 x 84cm)*

**\$800/1,200**



283

283

**Charles Wilbert White**

(American, 1918-1979)

**I Have a Dream, 1976**

Lithograph

Titled and numbered in pencil lower left 28/125, signed and  
dated over Contemporary Arts Center, Los Angeles County  
Museum of Art blind stamp lower right  
*Sheet size 22 1/4 x 30in (56.5 x 76.25cm)*

**\$1,000/1,500**



284

284

**Francisco Zúñiga**

(Mexican, 1912-1998)

**Familia Indígena I, 1976**

Color lithograph

Signed in pencil, dated and numbered 109/125 with the  
blindstamp of the publisher/printer, Kyron, S.A., Mexico City  
lower right

*Sheet size 25 x 35 3/4in (63.5 x 91cm)*

**\$800/1,200**



285 (Part Lot)

285

**After Johannes Kip and Leonard Kniff**

**Eight hand-colored engraved views of English country houses**

including Dunham Massie, Chester; Wimpole, Cambridgeshire;  
West House, Bedfordshire; Wythame, Berkshire; Chatsworth  
House, Derbyshire; Althrop, Northamptonshire; Castle of  
Bolsover, Derbyshire; Broome Hall, Suffolk  
*sheet 14 1/2 x 19 1/4in (36.8 x 49cm)*

**\$1,000/1,500**



286

286

**Jane Wooster Scott**

(American, 20th century)

**Admiring the New House**

oil on canvas

Titled and signed lower right

24 x 18in (61 x 45.75cm)

\$1,000/1,500

287

**Jane Wooster Scott**

(American, 20th century)

**Springtime in Edgartown**

oil on canvas

Titled and signed lower right

16 x 20in (40.5 x 51cm)

\$1,000/1,500



287

288

**Jane Wooster Scott**

(American, 20th century)

**The Lemonade Stand**

oil on canvas

Titled, signed and dated '76 lower right

8 x 10in (20.25 x 25.5cm)

\$400/600



288

289

**George Paice**

(British, 1854 - 1925)

**Three bulldogs in a landscape**

oil on panel

signed and inscribed lower left Warburton Hall Derby

12 x 16in (30.5 x 40.5cm)

\$1,000/1,500



289



290



291



292

290

**A whimsical English glazed earthenware stick stand in the form of riding boots registration mark for 1883**

With applied registration mark and impressed *F*, together with seven walking sticks.  
height 21 5/8in (52.5cm)

\$600/800

291

**A Louis XV style gilt bronze sixteen light chandelier 20th century**

height approximately 29in (73.5cm); diameter approximately 25in (63.5cm)

\$500/700

292

**A pair of Louis XV style carved beechwood fauteuils circa 1900**

height 38 1/4in (97cm); width 27in (69cm); depth of seat 21in (53.5cm)

\$800/1,200

293

**An Iberian Baroque carved and turned walnut bed 18th century**

height 88 1/2in (225cm); length 82in (209cm); width 44 1/4in (112cm)

\$800/1,200



293



294

294  
**A Continental Baroque style polychrome decorated twelve light chandelier**  
**20th century**  
*height approximately 37 1/2in (95cm); diameter approximately 36in (91.5cm)*

\$700/900



295

295  
**A charming brass mounted carved lindenwood dog form stick stand**  
**late 19th century**  
*height 33 1/2in (85cm)*

\$800/1,200



296

296  
**A pair of Louis XV style carved beechwood stools**  
**circa 1900**  
*height 19 1/2in (49.5cm); width 21 1/2in (55cm); depth 19 1/2in (49.5cm)*

\$1,000/1,500

297  
**A monumental Neoclassical style gilt bronze mounted marquetry inlaid cheval mirror**  
**circa 1900**  
*height 99in (252cm); width 58 1/4in (148cm); depth 25 1/4in (64cm)*

\$1,000/1,500



297



298



299



300

298

**Manner of Jacques Courtois**

(French 1621-1676)

**A calvary engagement**

oil on canvas

29 1/4 x 41 1/2in (74.3 x 105.5cm)

**\$3,000/5,000**

299

**A French gilt bronze mounted mahogany table  
19th century**

height 26 1/2in (67.5cm); width 19 1/4in (49cm); depth 13in (33cm)

**\$800/1,200**

300

**Henry Gillard Glindoni**

(British, 1852-1913)

**A Council of War William, Prince of Orange and his Aides  
after Landing at Torbay, 5th November**

oil on canvas

signed lower left

37 x 50in (94 x 127cm)

**\$1,500/2,000**

301

**An imposing Continental parcel ebonized carved walnut  
hunting lodge buffet  
late 19th century**

height 108in (274cm); width 77 1/2in (197cm); depth 28in (71cm)

**\$2,000/3,000**

302

**A pair of rare English Gothic Revival carved oak two  
sided revolving gallery easels  
late 19th century**

Each with brass adjustable frame holders to either side on a revolving lipped plinth, both impressed 4739 to underside.

height 87 1/2in (222cm); width 31in (79cm); depth 23in (58.5cm)

**\$12,000/18,000**



301



302







303



304



305

303

**A pair of Chinese Export 'Famille Rose' broad rimmed bowls**

**18th-19th century**

*height 3in (7.5cm); diameter 16 1/4in (41.25cm)*

**\$200/400**

304

**A Chinese cloisonné enamel garden seat**

**20th century**

*height 18 1/2in (47cm); diameter 15in (38cm)*

**\$300/500**

305

**An assembled nine piece group of Chinese Export porcelain tablewares**

**18th-19th century**

Comprising: five helmet-form cream jugs, a pair of sauce boats, a sauce tureen and stand and a reticulated oval platter/stand, some pieces variously monogrammed

*the platter length 15in (38cm); width 12 3/4in (32.5cm)*

**\$800/1,200**



306

306

**An assembled eleven piece group of Chinese porcelain figures and tableware**

**18th-20th century**

Comprising: two tea caddies (one lacking lid), two planters, two powder boxes, two triple divided salts and three figures

*height of tallest figure 9in (23cm)*

**\$400/600**



307

307

**Two Chinese hardstone and cloisonné enamel trees**

*the larger height 22in (56cm); width 25in (65.5cm)*

**\$400/600**



308

308  
**A Chinese Export 'Famille Jaune' garden seat**  
**Post 1950**

*height 18in (45.75cm); diameter 14in (35.5cm)*

**\$600/800**



309

309  
**Three Chinese Export 'Famille Rose' tablewares**  
**18th-19th century**

*Comprising: a large bowl, a soup plate and a dish  
the large bowl height 3in (7.5cm); diameter 16in (40.5cm)*

**\$300/500**



310

310  
**An assembled five piece group of Chinese Export  
porcelain tableware**  
**18th-19th century**

*Various patterns, comprising: two footed bowls, an octagonal  
dish and two platters*

*the larger platter height 2 1/2in (6.5cm); length 14 3/4in  
(37.5cm); width 11 1/4in (28.5cm)*

**\$300/500**



311

311  
**Two Chinese Export porcelain 'Famille Rose' figural  
groups**

*Possibly depicting Bixia Yuanjun on a phoenix and Laozi  
height of larger 22 1/2in (57cm)*

**\$500/700**



312

312  
**Four Asian metalware devotional figures**

*Comprising: a Thai head of Buddha, possibly Thai Ayuthya  
period, a Chola-style figure of Shiva Nataraj as Lord of the  
Dance, two copper alloy figures of begging Buddha  
the figure of Shiva Nataraj height 12 1/2in (37.75cm); width 11in  
(28cm)*

**\$600/800**



313



314



315



316

313

**Milton H. Lowell**

(American, 1848-1927)

**Cottages in a wooded river landscape**

oil on canvas

signed lower left

18 x 40in (45.8 x 101.5cm)

**\$700/1,000**

314

**Attributed to Alfred Vickers**

(British, 1786-1868)

**A Wayside Halt**

oil on panel

Paper label to reverse of frame for Arthur Ackerman & Son inscribed in ink.

7 1/2 x 12in (19 x 30.5cm)

**\$600/800**

315

**G. Hay**

(late 19th century)

**Solitude**

oil on canvas

signed lower right

28 x 44in (71 x 112cm)

**\$800/1,200**

316

**Continental School**

**18th/19th century**

**Still life of flowers and fruit in a basket**

oil on canvas

39 1/4 x 58 3/4in (99.5 x 149.5cm)

**\$700/900**



317



318



319



320

317

**L. Schiffer**

(German, 19th century)

**Portrait of a gentleman**

oil on canvas

signed lower left

39 1/2 x 32in (100 x 81cm)

**\$800/1,200**

318

**Joseph Buche**

(Austrian, 1848 - 1917)

**Young Tyrolean boy eating pomegranates**

oil on canvas

signed lower right

26 x 20in (66 x 50.8cm)

**\$800/1,200**

319

**F. Friedbichler**

(German, 19th century)

**The Young Huntsman**

oil on panel

signed and inscribed *Munchen*

13 x 9in (33 x 22.8cm)

**\$500/700**

320

**A. Van Dusen**

(Dutch, 19th/20th century)

**Feeding time**

oil on canvas

signed lower left

31 x 25in (78.8 x 63.5cm)

**\$500/700**



321

321

**A Sevres style gilt metal mounted porcelain table box  
late 19th/early 20th century**

The lid interior decorated with a figures in 18th century attire playing blind man's bluff.  
*height 5in (12.7cm); width 11 1/2in (29cm); depth 8 1/2in (21.5cm)*

\$1,000/1,500



322

322

**A Royal Copenhagen porcelain figural group: Wave and Rock  
after a model by Theodor Lundberg (Swedish, 1852-1926)  
date code for 1980-84**

Incised monogram and 1897 to reverse, green printed factory mark, blue wave mark and numbered 1132.  
*height 18in (46cm)*

\$500/700



323

323

**A George Jones majolica sardine dish and two  
Continental majolica sardine dishes  
late 19th century**

The George Jones oval dish with unglazed pad mark numbered 3517 above *D* and applied registration mark, the other two dishes unmarked; together with a S. Fielding majolica oyster plate, impressed *FIELDING*. (4)  
*height of first 4 1/8in (10.5cm); width 7 3/4in (19.5cm); diameter of oyster plate 9 1/4in (23.5cm)*

\$700/900

324

**A group of five Meissen porcelain figures  
late 19th-20th century**

Each with underglaze blue crossed swords, incised model numbers *A64, A71, 15, 30* and *1*, various impressed numbers and painted numbers.  
*heights ranging from 4 1/2 to 6in (11.5 to 15.3cm)*

\$800/1,200



324

325

**A French gilt bronze table jardinière  
late 19th century**

*height 7 1/2in (19cm); width 18in (45.7cm); depth 10 1/4in (26cm)*

\$800/1,200



325

326

**A French gilt bronze mounted porcelain covered urn  
late 19th century**

height 15 1/4in (38.7cm); width across handles 12in (30.5cm)

\$1,000/1,500



326

327

**A Continental majolica garden seat  
early 20th century**

height 18 3/4in (47.5cm); width 15 1/2in (39.5cm); depth 15 1/2in (39.5cm)

\$600/800



327

328

**A Meissen porcelain part tea service  
late 19th century**

Comprising covered cup and saucer; teapot (lacking lid), height 4 1/8in (10.5cm); cream jug, height 4 1/2in; covered sugar and tray, length 17 1/2in (44.5cm), each with underglaze blue crossed swords, the teapot with single cancellation.

\$500/700



328

329

**A set of eight German porcelain demitasse cups and saucers  
retailed by Greenleaf & Crosby Company, Florida  
20th century**

Gilt painted crown above Dresden, gilt rose mark and retailers mark.

height of cup 2 3/4in (7cm); diameter of saucer 4 1/2in (11.5cm)

\$300/500



329

330

**Three Continental bronze models of rabbits and two hare  
early 20th century**

One in gilt bronze, impressed GESCHULTZ; two in patinated bronze, impressed CARRE, together with two patinated metal models of hares. (5)

height of tallest bronze 3 5/8in (9.2cm); height of tallest patinated metal model 5in (12.7cm)

\$300/500



330



331

331

**A French gilt bronze mounted lacquer inset mahogany cabinet**  
**François Linke, Index Number 32**  
**circa 1900**

The upper right mount inscribed *F. LINKE*, the lockplate stamped *CT LINKE SERRURERIE PARIS* and numbered 32, the two upper mounts removed each stamped *LINKE*, the central mount stamped *FL* and numbered 4223.

*height 61 1/4in (155.5cm); width 63in (160cm); depth 16 3/4in (42.5cm)*

**\$5,000/7,000**

332

**A good French gilt bronze mounted kingwood vitrine**  
**Paul Sormani**  
**late 19th century**

Surmounted by a later marble top, the lockplate stamped *P. SORMANI*

*height 74 3/4in (140cm); width 51 1/2in (131cm); depth 17in (43cm)*

**\$8,000/12,000**

333

**A good pair of French gilt bronze, onyx and champlévé jardinières on stands**  
**F. Barbedienne, Paris**  
**second half 19th century**

One jardinière and one stand incised *F. BARBEDIENNE*.

*height overall 52in (132cm); diameter 23 3/4in (60.5cm)*

**\$15,000/20,000**



332



333







334

334  
**An imposing Continental carved stone garden bench**  
**19th century**  
*height 31in (79cm); width 98in (249cm); depth 27in (69cm)*

**\$800/1,200**



335

335  
**A pair of Baroque style cast stone garden urns**  
**20th century**  
*height 29 1/2in (75cm); width across handles 29in (74cm); depth 22in (56cm)*

**\$500/700**



336

336  
**A suite of twig iron garden furniture probably Rose Tarlow post 1950**  
Comprising a pair of armchairs, a foot stool and side table.  
*height 41 1/2in (105cm); width 28in (71cm); depth of seat 22in (56cm)*

**\$700/900**



337

337  
**A pair of Renaissance Revival carved stone figures of seated lions**  
**20th century**  
*height 29 1/2in (75cm); width 15 1/2in (39.5cm); depth 20in (51cm)*

**\$700/1,000**

338

**A Neoclassical style glazed model of a recumbent lion**  
**20th century**

*height 31in (79cm); width 41in (104cm); depth 16 1/2in (42cm)*

**\$500/700**



338



339

339

**Two twig iron garden armchairs**  
**probably Rose Tarlow**  
**post 1950**

Together with four similar adjustable day beds.  
*height of largest 41 1/2in (105.5cm); width 28 1/2in (72cm);  
depth of seat 22in (56cm)*

**\$1,000/1,500**

340

**A set of four Neoclassical style cast stone jardinières**  
**20th century**

*height 14in (35.5cm); width 31 1/2in (80cm); depth 16 1/2in (42cm)*

**\$400/600**



340 (Part Lot)



341



341

**A pair of Neoclassical style cast stone low garden urns**  
**20th century**

*height 15in (38cm); diameter 20in (51cm)*

**\$300/500**



342



343



344



345

342

**An imposing pair of Neoclassical style cast composition obelisks**  
**post 1950**

*height 84in (214cm)*

**\$1,500/2,000**

343

**A pair of near life size Continental glazed earthenware figures emblematic of two of the seasons**  
**post 1950**

*height 79in (201cm)*

**\$1,500/2,000**

344

**A pair of Neoclassical style silvered metal jardinières**  
**post 1950**

*height 24in (61cm); width across handles 23in (58.5cm); depth 18in (46cm)*

**\$700/900**

345

**A Baroque style cast stone garden urn**  
**20th century**

*height 28in (71cm); width across handles 25in (63.5cm); depth 21in (53.5cm)*

**\$400/600**



346



347



348



349

346  
**A pink Manago Calcite cluster**  
*height 6 1/4in (15.75cm); width 12in (30.5cm) depth 12in (30.5cm)*

**\$300/500**

347  
**An Amethyst Geode (partial)**  
**Minas Gerais, Brazil**  
*height 20 1/2in (23cm); width 10 1/2in (26.5cm); depth 14 1/2in (37cm)*

**\$500/700**

348  
**A Yellow Calcite Boulder**  
**Mexico**  
*height 13 1/2in (34.25cm); width 23 1/4in (59cm); depth 4in (10cm)*

**\$500/700**

349  
**A Quartz Cluster in matrix**  
**Arkansas**  
*height 11 1/2in (29.25cm); width 30 1/2in (77.5cm); depth 24 1/2in (62.25cm)*

**\$1,000/1,500**



350



351



352



353

350  
**A Louis XVI style carved giltwood and gesso console d'appliqué circa 1900**  
 Surmounted by a bow front marble top.  
*height 33 3/4in (86cm); width 36 1/2in (93cm); depth 19in (48cm)*

**\$800/1,200**

351  
**A pair of French gilt bronze and slate urns possibly Barbedienne, unmarked late 19th century**  
 Incised N104 to underside.  
*height 19 3/4in (50cm)*

**\$1,500/2,000**

352  
**A French wallpaper panel 19th century**  
 Depicting a chinoiserie figure having tea on a garden terrace.  
*dimensions 21 3/4 x 34 1/4in (55.2 x 87cm)*

**\$600/800**

353  
**A Louis XV carved fruitwood center table composed of antique elements**  
 Fitted with a single drawer  
*height 28 1/2in (72.5cm); width 32 1/2in (82.5cm); depth 32 1/2in (82.5cm)*

**\$500/700**



354



355



356



357

354  
**A George III side table with later chinoiserie decoration  
 table fourth quarter 18th century**  
*height 27 1/2in (70cm); width 31 1/2in (80cm); depth 19 3/4in  
 (50cm)*

**\$800/1,200**

355  
**A pair of Continental Baroque style giltwood and gilt  
 metal candelabra**  
**18th century and later**  
 Now mounted as lamps  
*overall height 28in (71cm); width 8in (20.25cm)*

**\$600/800**

356  
**A Louis XVI style gilt metal mounted inlaid mahogany  
 center table**  
**circa 1900**  
*height 29 1/4in (74cm); diameter 33in (84cm)*

**\$1,000/1,500**

357  
**Leon Goupil**  
 (French, 1834-1890)  
**Portrait of a woman in a red cap**  
 oil on panel  
 signed upper right  
*15 3/4 x 12 1/2in (40 x 31.7cm)*

**\$800/1,200**



358

358

**Samuel Edmund Waller**

(British, 1850-1903)

**A pack of wolves in winter**

oil on canvas

signed and dated 1874 lower left

56 x 40in (142.2 x 101.6cm)

**\$800/1,200**

359

**A Louis XV gilt bronze mounted bleached walnut bureau plat**

**mid 18th century**

height 31in (79cm); width 65in (165cm); depth 31 3/4in (81cm)

**\$1,000/1,500**



359



360 (Part Lot)

360

**A set of six George III style inlaid carved mahogany dining chairs**

**circa 1900**

Comprising a pair of armchairs and four side chairs

height of armchairs 37 3/4in (96cm); width 23in (58.5cm); depth

of seat 17 1/2in (44.5cm); height of side chairs 36in (91.5cm);

width 20in (51cm); depth of seat 17in (43cm)

**\$1,200/1,800**

361

**A French Gothic carved walnut coffer**  
**incorporating antique and later elements**

height 18 1/2in (47cm); width 37 1/2in (95.5cm); depth 17in (43cm)

**\$400/600**



361

362

**English School**

(19th century)

**Sailing ships off the coast of Malta**

oil on canvas

20 x 24in (51 x 61cm)

\$800/1,200



362



363

363

**A Louis XV style parquetry inlaid walnut table**  
**20th century**

The top inlaid with stellar motifs within a metal lozenge border.

height 30in (76cm); width 98 1/2in (250cm);

depth 43 1/4in (110cm)

\$1,000/1,500

364

**A set of eight Windsor mixed wood dining chairs**

**20th century**

Comprising two armchairs and six side chairs.

height of armchairs 42 1/4in (107cm); width

21in (53.5cm); depth of seat 17 1/4in (44cm);

height of side chairs 38 1/4in (97cm); width 20in

(51cm); depth of seat 16 1/2in (42cm)

\$800/1,200



364



365

365

**An Italian Renaissance style parcel gilt and paint decorated cassone**  
**composed of antique and later elements**

The central armorial panel flanked by inscription panels to either side, on a plinth base.

height 27in (69.5cm); width 73 1/2in (187cm);

depth 27in (68.5cm)

\$700/1,000





366



367



368

366

**An Italian carved marble bust of a maiden on an associated marble pedestal  
late 19th century**

*height of bust 23 1/2in (59.5cm); height of pedestal 50 1/2in (128cm)*

**\$1,500/2,000**

367

**A Rococo style patinated metal, rock crystal, quartz and glass eight light chandelier  
20th century**

*height approximately 40in (102cm); diameter approximately 26in (66cm)*

**\$1,000/1,500**

368

**A Steinway walnut grand piano  
Model O  
serial number 216923  
circa 1922**

*length 76in (193cm)*

**\$3,000/5,000**



369

369  
**A Rococo style gilt metal and cut glass fifteen light chandelier**  
**20th century**  
*height approximately 55in (140cm); diameter approximately 30in (76.5cm)*

\$1,200/1,800



370

370  
**An English mahogany three tier whatnot**  
**second quarter 19th century**  
 With an enclosed cupboard below.  
*height 60 3/4in (154.5cm); width 17in (43cm); depth 19in (48.5cm)*

\$800/1,200



371

371  
**A pair of Louis XV style gilt bronze mounted inlaid satinwood bed side tables**  
**early 20th century**  
*height 38 3/4in (98.5cm); width 17 3/4in (45cm); depth 16 1/4in (41cm)*

\$1,000/1,500



372

372  
**A Louis XV style inlaid satinwood dressing table and sidechair**  
**early 20th century**  
*height 55 (140cm); width 49 1/4in (125cm); depth 21 3/4in (55.5cm)*

\$1,000/1,500



373



374



375

373

**A French gilt bronze mounted granite urn  
late 19th century**

Now mounted as a lamp.  
*height to finial 22 3/4in (57.7cm)*

**\$800/1,200**

374

**An imposing pair of Renaissance style patinated bronze  
andirons**  
**first half 20th century**

*height 34 1/2in (88cm); width 22 1/2in (57cm); depth 8in (20cm)*

**\$1,000/1,500**

375

**A French patinated and gilt bronze and siena marble six  
light candelabrum**  
**late 19th century**

Now mounted as a lamp.  
*height to finial 38in (96.5cm)*

**\$400/600**

376

**A Meissen porcelain part tea service in the Scattered  
Flowers pattern**  
**20th century**

Comprising three 8in plates, ten 7 1/4in plates, eleven tea cups and thirteen dished saucers, seven demitasse cups and eight dished saucers, small teapot, one large cream jug, one small cream jug, pair of covered sugars and one smaller covered sugar, underglaze blue crossed swords. (58)

**\$800/1,200**

377

**A George II oak secretary bookcase**  
**mid 18th century**

The hinged fall concealing seven pigeon holes above six small drawers.

*height 85 3/4in (218cm); width 39 1/4in (99.5cm); depth 20 1/2in (52cm)*

**\$800/1,200**



376



377



378

**378**  
**A pair of French gilt bronze mounted porcelain vases**  
**late 19th century**

Now mounted as table lamps.  
*height to finial 28in (71cm)*

**\$700/900**



379

**379**  
**A French patinated bronze figure of a scholar**  
**early 20th century**

Raised on a stepped marble plinth.  
*height overall 30in (76cm)*

**\$1,000/1,500**



380

**380**  
**A pair of French gilt bronze seven light candelabra**  
**late 19th century**

Now wired for electricity.  
*height excluding electrical fitting 28 1/2in (72.3cm)*

**\$1,200/1,500**



381

**381**  
**A suite of Continental gilt heightened table glass**  
**late 19th century**

Comprising twelve small glasses, *height 3 1/2in (9cm)*; eleven flutes, *height 6 1/2in (16.5cm)*; eleven bowls and ten underplates, *diameter of plate 6 3/4in (17cm)*, each applied with a crest of a demi-lion rampant holding a garb above the motto *PECTORE PURE*.

**\$600/800**

**382**  
**A Directoire gilt brass mounted mahogany semainier**  
**late 18th century**

Surmounted by a marble top.  
*height 64 1/2in (164cm); width 37 1/2in (95cm); depth 16 3/4in (42.5cm)*

**\$1,500/2,000**



382



383

**Benjamin Chambers Brown**

(American, 1865-1942)

**The Kearsarge Pinnacles**

oil on canvas

signed and inscribed California lower right, inscribed to reverse with title above crossed out title *The Pass in Winter*, Painted by Benjamin Brown Pasadena, Calif. 120 N. El Molina Ave 36 1/2 x 28 1/2in (92.5 x 72.5cm)

**\$3,000/5,000**

384

**Attributed to Charles Willis**

(British, 1878-1963)

**A life size portrait of Edward VII**

oil on canvas

signed lower right

91 x 62in (231 x 157.5cm)

**\$3,000/5,000**

385

**A pair of Italian Baroque parcel gilt and paint decorated angels**

**17th century**

Raised on later pedestals, wings lacking.

height of angels 38in (96.5cm); height of pedestals 27 1/2in (70cm)

**\$1,000/1,500**

383



384



385



386

386

**William Louis Sonntag, Sr.**

(American, 1822-1900)

**Wooded river landscape with a bridge to the foreground**

oil on canvas

signed lower left

33 1/4 x 56in (84.5 x 142cm)

**\$4,000/6,000**

387

**A good George III Chinese export lacquer secretary  
bookcase**

**third quarter 18th century**

The upper case enclosed by a pair of paneled doors with five drawers to the interior, the lower case with hinged fall enclosing a fitted interior of small drawers and pigeon holes above a well  
*height 79in (201cm); width 38 1/2in (98cm); depth 23in (58.5cm)*

**\$10,000/15,000**



387



388

388

**A large Arts and Crafts “Moorish” needlework panel  
early 20th century**

*dimensions approximately 14ft 4in x 10 ft 3in (440 x 313cm)*

**\$2,000/3,000**

389

**A life-size French patinated bronze figure of a faun  
Alfred-Adolphe-Edouard Lepère (French, 1827-1904)  
Thiebaut Foundry  
second half 19th century**

Standing holding a dead hare aloft with a staff in his left hand, inscribed *Fdu par Von Thiebaut. and alfred Le Père.sc. 1862.*  
*height 95in (241.5cm); dimensions of plinth 33 3/4 x 18 1/2in (86 x 47cm)*

**\$10,000/15,000**

390

**An imposing Italian Rococo style carved giltwood and  
gesso mirror  
19th/20th century**

*height 93 1/4in (237cm); width 46 1/2in (118cm)*

**\$2,500/3,500**

391

**A Tiffany Studios ‘Drop-Head Dragonfly’ table lamp  
circa 1910**

The verdigris patinated leaded glass shade with ‘jewel’ cabochons on a verdigris-patinated twisted vine base surmounted by four-light cluster with Perkins electrolier sockets, with a 5in. wheel and original 5in. teardrop cap, shade stamped *TIFFANY STUDIOS NEW YORK 1507*, base stamped *TIFFANY STUDIOS NEW YORK 443*  
*overall height 31in (78.75cm); diameter of shade 22in (56cm)*

We would like to thank Paul Crist for his assistance in authenticating and cataloguing this piece.

**\$40,000/60,000**



389



391





392



394



395



396



393

392

**A pair of Chinese Export rice paper paintings of boats**

A junk and a sampan, handsomely framed and matted  
overall height 15in (38cm); width 19 3/4in (50cm)

**\$200/300**

393

**A Chinese hardwood side table**

height 33in (84cm); width 49in (125cm); depth 14 3/4in (37.5cm)

**\$500/700**

394

**A Chinese carved elm table**

height 30 1/4in (77cm); width 16in (41cm); depth 11 1/2in (29cm)

**\$300/500**

395

**A pair of Chinese 'Sang de Boeuf' baluster vases**

20th century  
height 25in (63.5cm); diameter 14 1/2in (37cm)

**\$1,000/1,500**

396

**A Chinese carved mixed wood and paint decorated bench**

height 38in (96.5cm); width 59in (150cm); depth of seat 15 3/4in (40cm)

**\$600/800**



397

397

**A Chinese carved hardwood armchair**

height 45in (114cm); width 29in (74cm); depth of seat 15 1/2in (39.5cm)

\$500/700



398

398

**A carved hardwood writing desk circa 1900**

height 46in (117cm); width 44 1/2in (113cm); depth 29in (74cm)

\$1,500/2,500



399

399

**A Chinese parcel gilt carved and hardstone veneered altar table**

With inscription panel to front.  
height 51in (130cm); width 71 1/4in (181cm); depth 24in (61cm)

\$1,000/1,500

400

**A pair of Chinese carved hardwood side tables**

Each with an inset marble top.  
height 32in (81.5cm); width 37in (94cm); depth 18 1/2in (47cm)

\$800/1,200



400



401



402



403



404

401

**A Chinese blue and white covered baluster jar  
Republic period, 20th century**

On stand

*The vase height 18in (45.75cm); diameter 10in (25.5cm)*

**\$400/600**

402

**A Chinese 'Famille Rose' fish bowl**

On stand

*overall height 32in (81.25cm); diameter 23in (58.5cm)*

**\$600/800**

403

**A Chinese cloisonné enamel jardinière**

*height 13 1/2in (34.25cm); diameter 19in (48.25cm)*

**\$300/500**

404

**A Chinese parcel gilt and ebonized pierced six panel floor  
screen**

**20th century**

*height 101in (256.5cm); width 141in (358cm)*

**\$1,000/1,500**

405

**A pair of imposing Japanese Imari palace vases**  
**20th century**

*height 60 3/4in (154cm)*

**\$2,000/3,000**



405



406

406  
**A Neoclassical brass mounted pine pedestal probably Baltic circa 1800**

Of rectangular tapered outline.  
*height 34in (86.5cm); width 25 3/4in (65.5cm); depth 18 3/4in (48cm); dimensions of top 22 x 15in (56 x 38cm)*

\$800/1,200



407

407  
**After Paolo Veronese  
 (Italian, 1528-1588)  
 The wedding feast at Cana**

oil on canvas  
 Late 18th/Early 19th Century  
 Within a gilt brass and faux tortoiseshell frame.  
*28 x 40in (71.2 x 101.6cm)*

\$8,000/12,000



408

408  
**A good pair of French cast iron models of dogs  
 J.J. Ducel, Me de Forges, Paris  
 second half 19th century**

One of a recumbent spaniel and the other a recumbent setter, each with cast inscription, *J.J. DUCEL, Me de FORGES, PARIS.*  
*height 19 1/2in (49.5cm); dimensions of base 15 1/2 x 26 1/4in (39.5 x 66.5cm)*

\$2,000/3,000



409

409  
**A pair of Sevres style gilt bronze mounted 'jeweled' porcelain covered urns  
 late 19th/early 20th century**

*height 26 1/2in (67cm)*

\$2,000/3,000



410



411



412



413

410  
**Follower of John Closterman**  
(early 18th century)  
**Portrait of a gentleman in a blue coat**  
oil on canvas  
49 3/4 x 41in (126.4 x 104.2cm)

\$1,200/1,500

411  
**A Neoclassical style carved giltwood and paint decorated trumeau mirror**  
20th century  
height 76in (193cm); width 30 1/2in (78cm)

\$800/1,200

412  
**A pair of Empire style gilt metal mounted pedestals**  
20th century  
height 36 1/4in (92cm); diameter 24in (61cm)

\$1,000/1,500

413  
**An Italian Rococo style inlaid walnut serpentine chest**  
20th century  
height 33in (84cm); width 49 1/2in (126cm); depth 21in (53cm)

\$800/1,200



414

414  
**A Neoclassical style parcel gilt and paint decorated mirror and console**  
**Post 1950**  
*dimensions of mirror 30 x 30in (76 x 76cm); height of console 30in (76cm); width 37in (94cm); depth 15in (38cm)*

\$600/800



415

415  
**A French wallpaper panel**  
**Probably J. Dufour**  
**early 19th century**  
Depicting figures in a park before a river with the Fontaine du Palmier beyond  
*sight dimension 70 1/2 x 55 1/4in (179 x 140.3cm)*

\$1,000/1,500



416

416  
**A pair of Louis XVI style gilt bronze and marble guéridons**  
**circa 1900**  
*height 27 1/4in (69.5cm); diameter of top 24in (61cm)*

\$1,500/2,000



417

417  
**A Louis XV walnut serpentine commode**  
**mid 18th century**  
*height 37in (95cm); width 50 3/4in (129cm); depth 23 1/2in (59.5cm)*

\$1,200/1,800



418



419



420



421



422

418  
**An Italian Rococo style carved giltwood and tôle fourteen light chandelier**  
20th century  
*height 40in (101.5cm); diameter 45in (114cm)*

**\$1,200/1,800**

419  
**Continental School**  
**Figures on a wooded parkway**  
oil on canvas  
*45 x 34 1/2in (114.3 x 87.5cm)*

**\$1,000/1,500**

420  
**An Italian Baroque style carved giltwood mirror**  
post 1950  
*height 70 1/2in (179cm); width 48in (122cm)*

**\$700/900**

421  
**An Isphahan carpet**  
*dimensions approximately 9ft 11in x 6ft 5in (302 x 196cm)*

**\$700/900**



423



424



425



426

422

**A monumental Baroque style three color metal forty light chandelier**  
**first half 20th century**

*height approximately 102in (259cm); diameter approximately 58in (147cm)*

**\$3,000/5,000**

423

**An English pub sign: Lord Nelson**

Centered by a portrait of Lord Nelson and inscribed *LORD NELSON PAT LYNCH. Licensed to sell Beer, Wines & Spirits.*  
*32 1/2 x 29 1/2in (82.5 x 75cm)*

**\$800/1,200**

424

**A good Louis XVI style gilt bronze, jasperware and marble four light chandelier**  
**circa 1900**

*height approximately 44 1/2in (113cm); width 16in (41cm); depth 14in (35.5cm)*

**\$3,000/5,000**

425

**A Kashan carpet**

*dimensions approximately 15 x 10ft 6in (457 x 320cm)*

**\$1,000/2,000**

426

**A Continental carved giltwood and gesso mirror**  
**circa 1900**

*height 70in (178cm); width 44in (112cm)*

**\$1,500/2,000**





427

427  
**Carl Ludvig Thilson Locher**  
(Danish, 1851-1915)  
**Two Danish frigates in the open sea**  
oil on canvas  
signed and dated 1883  
65 x 99in (165 x 251.5cm)

\$3,000/5,000



428

428  
**A Portuguese Baroque carved walnut library table**  
**18th century**  
height 36in (91.5cm); 68 3/4in (175cm); depth 36in (94cm)

\$5,000/7,000



429

429  
**A Ralph Lauren brass mounted mahogany campaign desk**  
**post 1950**  
With detachable superstructure  
height 35 1/2in (90cm); width 60in (152.5cm); depth 30in (76.5cm)

\$800/1,200



430

430  
**A Louis XVI style mahogany and oak console desserte**  
**second half 19th century**  
Surmounted by a veined gray marble top of breakfront outline.  
height 36in (91.5cm); width 81in (206cm); depth 17in (43cm)

\$1,500/2,500



431

431  
**An Empire style gilt bronze mounted mahogany dressing chest  
 circa 1900**

The reverse of bail handles stamped *P.E. GUERIN NY. 22.*  
*height 78 1/2in (199.5cm); width 62 1/2in (159cm); depth 27 1/4in (69cm)*

**\$2,000/3,000**



432

432  
**A good and imposing Empire style gilt bronze mounted sleigh bed  
 circa 1900**

*height 38in (96.5cm); width 93 1/4in (237cm); depth 60in (152.5cm)*

**\$2,000/3,000**



433

433  
**An Italian Neoclassical parcel paint decorated giltwood mirror  
 early 19th century**

*height 86 1/2in (219.5cm); width 46 3/4in (119cm)*

**\$2,500/3,500**



434

434  
**A good Italian Neoclassical parcel paint decorated and carved giltwood console  
 fourth quarter 18th century**

Surmounted by a veined marble top.  
*height 39in (99cm); width 44in (112cm); depth 23 3/4in (58cm)*

**\$3,000/5,000**



435



436



437



438

435

**A Louis XVI style carved giltwood and gesso mirror  
19th century**

*height 87 1/2in (222cm); width 51in (129.5cm)*

**\$2,500/3,500**

436

**A monumental Japanese porcelain palace vase**

*height 60in (125.5cm); diameter 22in (56cm)*

**\$400/600**

437

**A Trilobite Mortality Plaque**

**Acadoparodoxides**

**Tikniouine, Anti-Atlas, Morocco**

This natural assemblage features 8 large examples, complete and partial

*height 23in (58cm); width 27 1/2in (70cm), approximately*

**\$1,000/1,500**

438

**A large Ammonite and Orthoceras Plate**  
**Devonian**

**Sahara Desert, near Tamud, Morocco**

Naturally random mix of surface-polished ammonite and orthoceras specimens

*height 46in (117cm); width 43in (109cm), approximately*

**\$1,200/1,800**



439

439

**Marco Grubacs**  
(Italian, 1839-1910)

**View of Venice with the Doge's Palace to the foreground  
and the Basilica Santa Maria della Salute to the distance**

oil on panel  
signed lower left  
5 1/2 x 10 1/2in (14 x 26.5cm)

**\$800/1,200**

440

**Alfred de Breanski, Sr.**  
(British, 1852-1928)

**Highland cattle in a mountainous river landscape**

oil on canvas  
signed and dated 1896 lower left  
30 x 20in (76 x 51cm)

**\$800/1,200**

441

**A good quality Continental Renaissance Revival display  
cabinet**

**second half 19th century**  
height 92 1/2in (235cm); width 49in (124.5cm); depth 20in  
(51cm)

**\$1,500/2,500**

442

**A Louis XVI style gilt metal mounted parquetry inlaid  
walnut bureau plat and cartonnier**

**20th century**  
In three parts.  
height 58 1/4in (148.5cm); width 80 3/4in (205cm); depth 36in  
(91.5cm)

**\$2,000/3,000**



440



441



442



443

443

**A set of three Lino Sabatini silverplate Modernist vases  
Italy, late 20th century**

Two Persepoli vases and one Stele vase  
*height of Stele vase 12 1/4in (31cm); width of Persepoli vase  
20in (51cm)*

**\$800/1,200**

444

**Two Miguel Ortiz Berrocal (Spanish, 1933-2006) metal  
figural sculpture puzzles**  
**Second half 20th century**

Chrome and nickel plated "La Mini Cariatide" signed Berrocal  
#9640; Bronze "Micro David-Off", signed Berrocal  
*the larger height 6in (15.25); width 3in (7.5cm); the smaller  
height 2 1/2in (5cm); width 2in (2.5cm)*

**\$800/1,200**



444



445

445

**An 18K yellow gold, silver and granite Second Century  
Award**

**Late 20th century**

Awarded to Spencer T. Olin  
*height 9 1/2in (24cm); width 4in (10cm)*

**\$1,000/1,500**

446

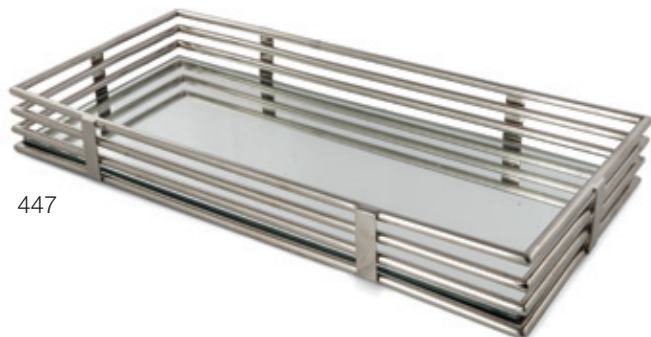
**A sterling silver and granite Eliot Society Award  
Late 20th century**

Awarded to Mary Dell Pritzlaff for service to Washington  
University  
*height 12 1/4in (31cm); width 5in (13cm)*

**\$500/700**



446



447

447

**A Modernist chrome and mirrored glass galleried tray  
Apparently unmarked, modern**

*height 3 1/2in (9cm); length 29 1/2in (75cm); depth 13 3/4in  
(35cm)*

**\$300/500**

448

**A pair of Achille and Pier Giacomo Castiglioni 'Taccia' table lamps designed circa 1962**

Polished spun aluminum, clear blown glass, with decal manufacturer's label to interior: *Flos / Taccia 121 / Design Registered / Made in Italy*. lowest height 21 1/4in (54cm); diameter 19 1/4in (49cm)

\$2,000/3,000



448



449

449

**A French Modernist counterbalance lamp table the design attributed to Robert Mathieu circa 1955**

Apparently unmarked, with Diabolo shade and adjustable counterbalance standard. height 63in (160cm); width 17in (43cm); depth 40in (101.5cm)

\$1,000/1,500

450

**Robert Graham (American 1938-2008)**

**MOCA torso**

white and brown patinated bronze circa 1992-95, underside incised *R. Graham* (partly obscured) and further marked *Valentino* and another illegible signature height 11in (28cm); width 4 1/4in (10.75cm); depth 4 1/4in (10.75cm)

\$2,000/3,000



450



451

451

**Robert Graham (American 1938-2008)**

**Untitled**

bronze relief plaque circa 2000, apparently unmarked 9 3/4 x 7 3/4in (24.75 x 19.5cm)

\$800/1,200

452

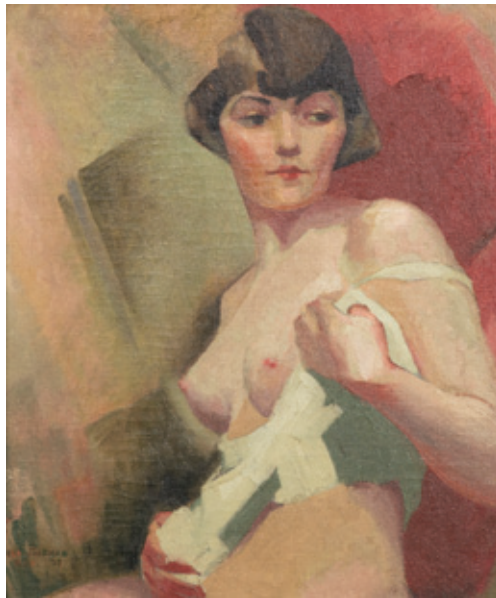
**A collection of four Art Deco silverplate tablewares By WMF and other makers, second quarter 20th century**

Comprising: a 'Victoria' cocktail shaker, an ice pail, an Italian pedestal bowl and a rounded rectangular tray height of shaker 9 1/4in (23.5cm); length of tray 16 3/4in (42.5cm)

\$150/250



452



453

453

**Reva Jackman**

(American, 1892-1966)

**Portrait of a Woman**

Oil on canvas

Signed and dated lower left Reva Jackman, Paris 27  
24 x 20in (61 x 50.8cm)

**\$5,000/7,000**



454

454

**An Art Deco shell inlaid walnut pool / billiards table  
second quarter 20th century**

With an inset brass plaque inscribed *The Brunswick-Balke-  
Collender Co. Monarch Cushions*, the frame stenciled 98926  
and stamped M98926 several times.

height 31in (79cm); length 110 1/2in (280.5cm); depth 60in  
(152.5cm)

**\$1,500/2,000**



455

455

**A Paul McCobb, mid-century brass and mahogany bar  
cart**

The travertine top above a slide and detachable tray, label  
to drawer inscribed *CALVIN GRAND RAPIDS THE IRWIN  
COLLECTION DESIGNED BY PAUL McCOBB*.

height 29in (74cm); width 36 1/4in (92.5cm); depth 19 1/4in  
(49cm)

**\$400/600**



456

456

**A collection of bakelite and catalin gaming sets, boxes  
and accessories  
circa 1940**

Including gaming chip sets, napkin ring sets, a set of six knives,  
and four table boxes, 15 (groups, sets or boxes) two chip sets  
possibly another type of plastic.

the largest chip set height 5 1/4in (13.25cm); length 7in  
(17.75cm)

**\$200/300**



457  
**A Fada Model 1000 'Bullet' catalin table top radio circa 1945**  
 Butterscotch body with red accents.  
*height 6 1/2in (16.5cm); length 10in (25.5cm); depth 5 1/2in (14cm)*

**\$800/1,200**

458  
**A Bendix Model 526C catalin and an Arvin Model 444 'Midget' chrome table top radio circa 1946**  
 The Bendix with green body with black grille, 2pcs.  
*height of Bendix 6 3/4in (17in ); length 11in (28cm); depth 6 1/2in (16.5cm)*

**\$400/600**

459  
**An Addison Model A2 'Waterfall' catalin table top radio circa 1947**  
 Burgundy body with butterscotch accents.  
*height 5 3/4in (14.5cm); length 10 1/4in (26cm); depth 5in (12.75cm)*

**\$500/800**

460  
**An Addison Model A2 'Waterfall' bakelite and plaskon table top radio circa 1947**  
 Mottled black body with ivory accents.  
*height 5 3/4in (14.5cm); length 10 1/4in (26cm); depth 5in (12.75cm)*

**\$400/600**

461  
**A Fada Model 115 'Bullet' catalin table top radio circa 1940**  
 Butterscotch body with matching accents.  
*height 7in (17.75cm); length 10 1/4in (26cm); depth 5 1/2in (14cm)*

**\$600/800**

462  
**A mid-century ebony macassar and chrome bar**  
*height 43 3/4in (111cm); width 51in (130cm); depth 27 1/4in (69.5cm)*

**\$800/1,200**



462





463  
**An American Art Deco sterling silver and ebony cocktail shaker**  
**By International Silver Co., Meriden, CT, circa 1930**  
*Gross weight approximately 31oz troy; height 14 1/2in (37cm); width 6 1/4in (16cm)*

**\$800/1,200**

463



465

464  
**A Japanese hammered 950 standard silver cocktail shaker**  
**Marked Sterling / 950**  
*weight approximately 14.5oz troy; height 9in (23cm); diameter 4in (10cm)*

**\$200/300**



464

465  
**A rare American Art Deco catalin and silverplate Special Line 'Preference Chest' cigarette box**  
**Designed by Albert Feinauer for Barbour Silver Company, Hartford, CT, circa 1929-31**  
 #5085, with divided cedar lined interior  
*height 2in (5cm); length 10in (25.5cm); depth 3 1/2in (9cm)*

**\$800/1,200**

466  
**A six piece collection of Art Deco chrome and silverplate cocktail accessories**  
**By Manning Bowman, Meriden, CT and other makers, circa 1930**

Comprising: a Manning Bowman shaker with green catalin handle and knobs, an olive dish with similar catalin ball handles, a Bonzer double cup shaker, a Rogers shaker and stirrer and two shakers.  
*Manning Bowman shaker height 11in (28cm); length over handle 9 1/4 (23.5cm); width 5 1/2in (14cm)*

**\$300/500**



466



467

467  
**A collection of five Art Deco silverplate tablewares**  
**By WMF and other makers, second quarter 20th century**  
 Comprising: a Meriden 'Ile De France' cocktail pitcher with ebony handle and finial, a cocktail tray, a WMF vase and two cocktail shakers  
*the vase height 13 1/2in (34.25cm); diameter 9 1/2in (24cm); the tray length 14 3/4in (37.5cm)*

**\$300/500**

468  
**A collection of Art Deco and Modernist chrome, silverplate and bakelite cocktail and tableware**  
**By various makers, second quarter 20th century**  
 Comprising: a Chase three piece coffee service and a two piece dessert serving tray, a Krome Kraft cocktail pitcher, a Neocraft insulated ice bucket, a six glass cocktail caddy, 8pcs  
*height of cocktail shaker 12 1/2in (31.75cm); length of dessert tray over handle 11 1/2in (29.25cm)*

**\$600/800**



468



470

470

**A Victorian silverplate and cut glass  
three-light centerpiece**  
**Apparently unmarked**

*height 34in (86.5cm); diameter 21in (53.5cm)*

**\$800/1,200**



469

469

**A Neoclassic style silver and etched clear  
glass footed vase**

**With spurious marks, 20th century**

*silver weight approximately 20oz troy; overall  
height 18in (45.75cm); width 6 1/2in (16.5cm)*

**\$800/1,200**

471

**An American sterling silver part flatware service for  
twelve By Reed & Barton, Taunton, MA, mid-20th century**

French Renaissance pattern, comprising: 18 dinner forks, 18  
dinner knives, 12 luncheon forks, 12 luncheon knives, 12 salad/  
dessert forks, 11 steak knives, 12 flat handle butter spreaders,  
12 hollow handle butter spreaders, 12 round bowl soup  
spoons, 30 teaspoons, initial S (149)  
with a canteen

total weighable silver approximately 148oz troy; the canteen  
height 4in (10cm); length 23in (58.5cm); depth 13in (33cm)

**\$1,500/2,500**



471 (Part Lot)



472

472

**An assembled thirteen-piece collection of Continental  
silver tableware**  
**Mostly German and Russian, various makers, late 19th/  
early 20th century**

Comprising: a Wilhelm Binder oval platter, two Russian vodka  
cups, a Russian tea strainer and sugar basket and eight  
hammered salts, undersides inscribed Mumsly  
*the platter length 17 3/4in (45cm); 13 3/4in (35cm); total weight  
approximately 39oz troy*

**\$700/900**

473

**An assembled George IV sterling silver four-piece tea and  
coffee service**

**By various makers, London, 1825-1828**

Comprising: a teapot, a coffee pot, a cream jug and a sugar  
bowl, the cream jug and sugar bowl with heraldic engraving  
*the coffee pot height 8 1/2in (21.5cm); total gross weight ap-  
proximately 65oz troy*

**\$800/1,200**



473



474

474

**An Art Nouveau silvered bronze oval footed two-handled jardinière**

**Apparently unmarked, circa 1900**

With liner

*height 6in (15cm); length over handle 22 1/2in (57cm)*

**\$500/700**



475 (Part Lot)

475

**An assembled American sterling silver part flatware service**

**By Gorham Mfg. Co., Providence, RI, 20th century**

Chantilly pattern, comprising: 5 dinner forks, 6 dinner knives, 8 luncheon forks, 6 salad/dessert forks, 4 butter spreaders, 8 bouillon spoons, 4 oval bowl soup/dessert spoons, 4 round bowl soup spoons, 6 teaspoons, 6 fruit knives, 6 ice cream forks, 4 serving pieces and a table bell, some monogrammed (68)

*total weighable silver approximately 62oz troy*

**\$800/1,200**



476

476

**A set of eight American sterling silver goblets**

**By Watrous Mfg Co., Wallingford, CT, 20th century**

*height 6 3/4in (17cm); total weight approximately 40oz troy*

**\$500/700**



477

477

**An assembled set of eight American sterling silver goblets**

**Most by Revere Silversmiths, Brooklyn, NY, 20th century**

*height 6 3/4in (17cm); total weight approximately 40oz troy*

**\$500/700**

478

**Two American sterling silver circular serving platters**

**By various makers 20th century**

One Gorham, the other without maker's mark, pattern Marie Antoinette

*diameter of larger 14in (35.5cm); total weight approximately 54oz troy*

**\$700/900**



478

479

**An Italian sterling silver hydrangea form table box  
20th century**

*weight approximately 39oz troy; height 4in (10cm); length 10 1/2in (26.5cm); depth 10in (25.5cm)*

\$500/700



479

480

**A Continental 800 standard silver figural peacock dish  
20th century**

With hinged wings

*weight approximately 22oz troy; height 6 1/2in (16.5cm); width 8in (20.25cm); length 14 1/4in (36cm)*

\$400/600



480

481

**A Baroque style silver mirror  
Apparently unmarked, modern**

*height 35in (89cm); width 24 1/2in (62.25cm)*

\$1,000/1,500



481

482

**A Portuguese sterling silver menorah  
By Topazio, Porto, 20th century**

*weight approximately 92oz troy; height 26in (66cm); width 20in (51cm); depth 8in (20.25cm)*

\$1,200/1,800



482

483

**A five piece collection of American sterling silver hollowware**

**By Tiffany & Co., New York, NY, 20th century**

Comprising: an oval bread dish and two pairs of butter shells  
*total weight approximately 23.5oz troy; length of dish 10 1/2in (26.5cm)*

\$300/500



483

484

**Four decorative silver table top picture frames  
Three marked RC 925, modern**

*the largest height 11 1/2in (29.25cm); width 9 3/4in (24.75cm)*

\$600/800



484

**END OF SALE**

## Glossary

The following are examples of the terms used in this catalogue. While every reasonable effort has been made to ensure that the statements made in the catalogue are correct, all statements and terminology in this catalogue are opinions of Andrew Jones Auctions and are subject to the provisions of the Terms and Conditions of Sale. Andrew Jones Auctions and Consignors make no warranties or representations with respect to any aspect of any lot. Buyers are invited to inspect the property themselves.

### Furniture

#### **A George II mahogany secretary cabinet Second quarter 18th century**

This heading, with date included, means that the piece is, in our opinion, of the period indicated with no major alterations or restorations.

#### **A George II mahogany secretary cabinet Incorporating antique and later elements**

This heading, indicates that, in our opinion, the piece, while basically of the period, has undergone significant restoration and alteration.

#### **A George II mahogany secretary cabinet Composed of antique elements**

This heading, indicates that, in our opinion, the piece, while basically of the period, has undergone significant restoration and alteration.

#### **A George II style mahogany secretary cabinet**

The inclusion of the word "style" in the heading indicates that, in our opinion, the piece was made as an intentional reproduction of an earlier style.

### Ceramics

#### **A Meissen porcelain figural group Fourth quarter 18th century**

This heading indicates that in our qualified opinion the figural group was made at the Meissen factory in the fourth quarter of the 18th century.

#### **A Meissen porcelain figural group**

This heading indicates that in our qualified opinion the figural group was made at the Meissen factory but does not specify when, implying the age is uncertain.

#### **A Meissen style porcelain figural group Fourth quarter 19th century**

This heading indicates that in our qualified opinion the figural group was not made at the Meissen factory but at another factory in the fourth quarter of the 19th century.

### Bronzes

#### **Jean-Baptiste Carpeaux (French, 1827-1875)**

This heading indicates that in our qualified opinion the work has been cast with the artist's consent or that of his estate.

#### **After a model by Jean-Baptiste Carpeaux (French, 1827-1875)**

This heading indicates that in our qualified opinion the work is a copy of the artist's model and not connected in any way with the artist or his estate.

### Silver

#### **A George III sterling silver dinner plate By George Parker and Edward Wakelin, London, 1770**

This heading states that in our opinion, this piece was made in the workshop of the master(s) or struck with his sponsor's mark prior to retailing and hallmarked at the London Assay Office in the assaying year stated.

#### **A George III sterling silver dinner plate Apparently without maker's mark or maker's mark rubbed, circa 1770**

This heading states that in our opinion, this piece was made during the specified monarch's reign and is unmarked, or illegibly marked.

#### **A George III sterling silver dinner plate Bearing marks of George Parker and Edward Wakelin, London, 1770**

This heading states that in our opinion, this piece was made during the specified monarch's reign, though maker's attribution and exact date are questionable.

There are variations to the dating systems within the British Isles and in other countries. Please note the weights listed in this catalog are approximate.

### Paintings

#### **Authorship (Artist)**

This is our highest category of authenticity and, as such, indicates that the work, in our best judgment, is by the named artist. (No unqualified statement as to authorship is made or intended.)

#### **Attributed to (Artist)**

In our best judgment a work of the period and in the style of the artist; may be the work of the artist, in whole or in part, but less certainty of authorship than in the preceding category.

#### **Studio of (Artist)**

In our best judgment a work by an unknown hand working in the artist's studio.

## Glossary (cont.)

### **Circle of (Artist)**

In our best judgment a work of the period of the artist and closely related to the artist's style.

### **Follower of (Artist)**

In our best judgment a work by an artist working in the artist's style, in his lifetime or shortly thereafter.

### **Manner of (Artist)**

In our best judgment a work in the style of the artist, possibly of a later date.

### **After (Artist)**

In our best judgment a copy of the known work by the artist.

### **Title**

If there is a generally accepted title of the lot, that title is given at the beginning of the description. If the work does not have a title or the title is not known to us, a descriptive title is given.

### **Signature Signed**

The signature is, in our opinion, the signature of the artist.

### **Bears Signature**

Has a signature which, in our opinion, might be the signature of the artist. The signature, inscriptions and dates are transcribed in print as they appear.

### **Condition**

No statement is implied or intended regarding the imperfections or general condition of a work. If you have questions on the condition of a piece, we would be glad to provide an opinion for guidance only. Condition reports may not include all adaptations, alterations or faults. Our staff are not professional conservators or restorers. Condition reports are not an alternative to examining a lot in person or obtaining your own professional advice. Andrew Jones Auctions will not be liable for failure to furnish a condition report. Unless specifically illustrated and noted, fine art frames are not included in the estimate or purchase price. Andrew Jones Auctions accepts no liability for damage or loss to frames while in storage. As stated in paragraph 7 of our Terms & Conditions of Sale, Andrew Jones Auctions is not responsible for loss damage of any kind or to frames or any other item when in the possession of a third-party shipper or any unaffiliated individual or collection service.

## Conditions of Sale

By bidding at auction, whether present in person or by agent, by absentee bid, telephone, internet or other means, the buyer agrees to be bound by these Conditions of Sale.

1. Unless otherwise indicated, Andrew Jones Auctions, is acting as an agent for the seller (consignor).
2. The 'bid price' refers to the highest bid acknowledged by the auctioneer. The highest bidder acknowledged by the auctioneer shall be the buyer. The auctioneer has the right to reject any bid, to advance the bidding at his or her absolute discretion and in the event of any dispute between bidders to determine the successful bidder or to reoffer and resell the lot in dispute. If any dispute arises after the sale, Andrew Jones Auctions sale record shall be conclusive in all respects.
3. The 'purchase price' is the sum of the final bid (hammer price) plus the buyer's premium and applicable sales tax, unless the buyer is exempt by law from such taxes. The buyer's premium per lot is 25% on the first \$500,000; 18% on the amount between \$500,001 and \$2,000,000; 12% on any amount above \$2,000,000. Bidders using online bidding platforms will be subject to an additional 5% premium.
4. Payment must be received by Andrew Jones Auctions within three business days following the auction. We accept cash, bank wire transfers, checks and credit cards. All payments made by personal check will be subject to clearance before purchases can be collected. Buyers who have not purchased from Andrew Jones Auctions previously will be asked to provide photo identification, method of payment and/or financial references prior to the auction. Buyers outside of the United States must submit payment via wire transfer.
5. Buyers shall not take possession of any lot until all amounts due to Andrew Jones Auctions have been paid in full. After payment has cleared, packing material and loading assistance are provided free of charge. Please note that this assistance is offered as a courtesy to our clients, however, Andrew Jones Auctions will not be held liable for damage to property, regardless of cause, during this service.
6. All lots must be removed within five days of the date of the auction.
7. Andrew Jones Auctions does not have in-house shipping services; however, we can provide you with information on third-party shippers for you to contact directly. Andrew Jones Auctions is not responsible for the services provided by third-party shippers.
8. Upon fall of the hammer, title to any offered lot will immediately pass to the highest bidder, subject to compliance by the buyer with these Conditions of Sale. The buyer assumes full risk and responsibility of the property sold, agrees to sign any requested confirmation of purchase and agrees to pay the full purchase price.
9. We reserve the right to withdraw, postpone or cancel any lot or sale before or during the auction for any reason.
10. No lot may be transferred.
11. All property is sold AS-IS. Andrew Jones Auctions, its agents, employees and the consignor, make no warranty or guarantee of title, merchantability or fitness for a particular purpose, or other warranty or representation regarding the description, authenticity, attribution, period, culture, source, origin, provenance, age, size or condition.
12. Andrew Jones Auctions offers absentee, telephone and internet bidding as a convenience to clients and does not accept responsibility for errors or failure to execute bids for any reason. Internet bidding is offered through third-party online bidding platforms.
13. Unless otherwise stated, lots offered may be subject to a reserve. The reserve is a price that we cannot sell an item below. This price is confidential between Andrew Jones Auctions and the seller. By law, the reserve cannot exceed the low estimate of any given lot. The auctioneer will protect the reserve on behalf of the seller by opening bidding or advancing bidding until reaching the reserve.
14. The copyright on all images, illustrations, digital images and text of any catalog produced by Andrew Jones Auctions are the property of Andrew Jones Auctions. You will not reproduce such text, photographs, illustrations or digital images without our prior written consent.
15. In the event that delivery cannot be made to the buyer because of loss due to fire, theft or any other reason, or a sale cannot be completed, our liability will be limited to the purchase price.
16. Condition reports are offered as a courtesy to our clients and are a statement of opinion and should not be treated as a statement of fact. Andrew Jones Auctions is not responsible for any error or omission. The absence of a condition report on an item does not imply the lot is in perfect condition or free from typical wear or effects commensurate with age. Buyers are responsible for determining to their own satisfaction the condition of any lot prior to bidding.
17. The respective rights and obligations of the parties with respect to these Conditions of Sale and the conduct of the auction shall be governed by and construed, interpreted, applied and enforced in accordance with the laws of the State of California. By bidding at auction, be it in person or by agent, absentee bid, telephone, internet or other means, the buyer shall be deemed to have consented to the jurisdiction of the courts of California.

**Design for the Home and Garden**  
Featuring the David and Barbara Hart  
Collection of World Art  
Fall 2018





# ANDREW JONES AUCTIONS

## AUCTIONEERS & APPRAISERS

### Registration/Bid Form

<input type="text"/>	<input type="text"/>	<input type="text"/>	<input type="text"/>
Paddle number			
<input type="text"/>	<input type="text"/>	<input type="text"/>	<input type="text"/>
Sale number			

**General Notice:**

This auction will be conducted in accordance with Andrew Jones Auctions Conditions of Sale. Please read the COS in conjunction with our policies relating to this sale and other published notices and terms relating to bidding. Winning bidders are responsible for the sum of the final bid, plus Buyer's Premium on the final bid price, any applicable fees and California State Tax for all items purchased, unless exempt in California or shipping documents showing an out-of-state destination are provided.

Title:	First Name:	Last Name:	
Driver's License number:	*Seller's Permit Number:	State:	Exp:
Company Name (if applicable):			
Address:			
City:	State:		
Zip code:	Country:		
Telephone:	Cell phone:		
Alternative phone:	Fax:		
Email:			
By providing your email address you authorize Andrew Jones Auctions to send you news and sale announcements. Andrew Jones Auctions does not sell, share or trade email addresses.			

**Notice to new bidders:**

New clients are required to provide proof of ID (i.e., driver's license, ID card, passport), as well as proof of address (i.e., utility bill, bank or credit card statement etc.). For higher value lots you may be asked to provide a bank reference. If you do not have a purchase history with Andrew Jones Auctions, you may be required to leave a refundable deposit to bid. If you are not the high bidder your deposit will be returned within 24 hours of the sale date. \*Clients with company accounts will be required to provide additional information.

**Notice to absentee bidders:**

Bids will be rounded down to the nearest increment. Andrew Jones Auctions will endeavor to execute bids on your behalf but will not be liable for any errors or non-executed bids.

**All bidders:**

Please submit a completed bid form with lot details at least 24 hours prior to the auction.

**Buyers outside of the United States must submit payment via wire transfer. Credit cards are not accepted form of payment for buyers outside of the United States.**

**General Bid Increments:**

- \$20-200.....by 20s
  - \$200-1000.....by 50s
  - \$1000-2000.....by 100s
  - \$2000-5000.....by 200s
  - \$5000-10,000.....by 500s
  - \$10000-20,000.....by 1000s
  - \$20000-50000.....by 2000s
  - \$50,000-10,0000.....by 5000s
  - \$100,000-200,000.....by 10,000s
  - \$200,000-500,000.....by 20,000s
  - Above \$500,000 at the auctioneer's discretion
- The auctioneer has absolute discretion to split the bids at any time.

Please email or fax this completed Registration form to:

Email: info@andrewjonesauctions.com  
 Fax: (213) 748-8018  
 Tel: (213) 748-8008

Lot Number	Description	Max Bid in US\$ (excluding premium & tax)

<b>By signing this form, I agree that I have read Andrew Jones Auctions Conditions of Sale and shall be legally bound by them. This affects my legal rights.</b>	
Signature:	Date:



2221 South Main Street  
Los Angeles, California 90007  
United States  
(213) 748-8008

