

# ANDREW JONES AUCTIONS

---

AUCTIONEERS & APPRAISERS



DTLA Collections and Estates Auction

---

Sunday - January 20, 2019

## DTLA Collections and Estates Auction



### 1: Matched pair of Victorian ebonized slipper chairs

USD 200 - 300

A matched pair of Victorian gilt metal mounted ebonized slipper chairs mid 19th century  
height 29in (73.5cm); width 15 3/4in (40cm); depth 24in (61cm)

---



### 2: Frank Augusta Rezia, oil, seaside village

USD 800 - 1,200

Franz Auguste Rezia (Italian, 1857-1906)  
A seaside village with fishing boats to the foreground  
oil on board, signed lower right, together with another, a pair.  
14 x 7in (35.5 x 18cm)

---



### 3: A set of seven Empire style armchairs, modern

USD 500 - 700

A set of seven Empire style armchairs  
modern  
Three white painted with upholstered seats and five unfinished frames lacking ball finials.  
height 36in (92cm); width 23 1/2in (60cm); depth of seat 19in (48.5cm)

---



### 4: Pair Italian Rococo style walnut chests, modern

USD 400 - 600

A pair of Italian Rococo style walnut chests  
modern  
height 26 1/2in (67cm); width 31in (79cm); depth 16 1/4in (41cm)

---



### 5: Six International silver accessories

USD 500 - 700

A six piece group of International silver accessories  
various makers and origins, 19th-20th century  
Comprising: a Russian 84 standard cup, a small Japanese vase, two French taste vials, an English brandy warmer and stand and a German sleigh-form salt. the warmer and stand overall height 6in (15cm); length 7in (18cm); total weighable silver approximately 22oz troy

---



### 6: A Japanese silver fish service for twelve

USD 250 - 350

A Japanese silver fish service for twelve  
Murata Shoten, Yokohama  
20th century  
Comprising 12 forks and 12 knives, weighted handles with cases; together with 24 luncheon and dinner mother of pearl handled knives. (48)

---

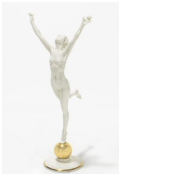


### 7: A chrome, frosted and colored glass chandelier

USD 600 - 800

A chrome, frosted and colored glass three light chandelier  
post 1950  
height approximately 27in (69cm); width approximately 25in (64cm)

---



### 8: A Hutschenreuther porcelain figure of a nude

USD 100 - 150

A Hutschenreuther porcelain figure of a nude  
after the model by Karl Tutter (German, 1883-1969)  
early 20th century  
Green printed factory mark, remnants of paper label inscribed Lorenz Hutschenreuther Aktiengesellschaft Selb Bayern Kunstabteilung, incised K. TUTTER, height 12 3/4in (32.5cm)

---

## DTLA Collections and Estates Auction



### 9: A Neoclassical style oak side cupboard

USD 300 - 500

A Neoclassical style carved oak side cupboard  
early 20th century  
Surmounted by a marble top.  
height 34 1/4in (87cm); width 49in (124.5cm); depth 20in (51cm)

---



### 10: Four Chinese porcelain vases

USD 300 - 500

A group of four Chinese porcelain vases  
20th century  
Three mounted as lamps, one drilled but unmounted.  
the unmounted vase height 14in (35.5cm); width 7 1/2in (19cm)

---



### 11: A Continental mixed wood wing armchair

USD 250 - 350

A Continental maple wing armchair  
late 19th century  
height 45 1/2in (115.5cm); width 27 1/4in (69cm); depth of seat 22in (56cm)

---



### 12: Seven Continental porcelain figural groups

USD 300 - 500

Seven Continental porcelain figural groups  
20th century  
All with underglaze blue crowned N mark, two also marked Ginori.  
heights ranging from 7 to 9in (18 to 23cm)

---



### 13: A Louis XV style carved beechwood bergere

USD 300 - 500

A Louis XV style carved beechwood bergere  
late 19th century  
height 42in (107cm); width 26 1/2in (67cm); depth of seat 21 1/2in (55cm)

---



### 14: Nine prints of Argentine costumes and scenes

USD 300 - 500

A group of nine hand colored prints of Argentine costumes and scenes  
the largest overall 16 x 12 3/4in (41 x 32cm)

---



### 15: A carved alabaster bust of a Classical woman

USD 600 - 800

A carved alabaster bust of a Classical woman  
circa 1900  
height 24in (61cm)

---



### 16: A suite of Orrefors cut glass stemware

USD 150 - 200

A suite of Orrefors cut glass stemware  
20th century  
Comprising fourteen 5 5/8in glasses and fourteen 5 7/8in glasses, etched factory mark, some with factory stickers.

---

## DTLA Collections and Estates Auction



### 17: Three English sterling silver cups

USD 200 - 300

Three English sterling silver cups  
various makers, London, 19th -20th century  
the largest height 4in (10cm); length over handle 4 1/4in (11cm); total weight approximately 14oz troy

---



### 18: A Chinese carved hardwood three fold screen

USD 250 - 350

A Chinese carved hardwood three fold floor screen  
20th century  
height 72in (183cm); width open 58in (148cm)

---



### 19: Two Continental gilt metal table objects, WMF

USD 300 - 500

Two Continental gilt metal table objects  
first half 20th century  
Comprising a WMF rectangular table casket and a figure of baby Vulcan, on an onyx plinth.  
the casket height 9in (23cm); width 12 3/4in (32cm); depth 6in (15cm)

---



### 20: A Louis XV style caned corner bergere

USD 250 - 350

A Louis XV style carved beechwood and cane paneled revolving bergere  
20th century  
height 36 3/4in (93.5cm); width 21 1/4in (54cm); depth of seat 19in (48cm)

---



### 21: A Louis XVI style painted mirror

USD 100 - 200

A Louis XVI style parcel gilt and grey painted wood and composition mirror  
modern  
height 41 1/2in (106cm); width 25 1/2in (65cm)

---



### 22: An International collection of silver tableware

USD 700 - 900

An assembled collection of International silver tableware  
by various makers 20th century  
Comprising a Peruvian fish platter, charger and brandy warmer, a pair of small Mexican casters, a Tunisian silver covered footed box, a pair of Italian octagonal salts, a pair of small French salts and associated spoons, and a set of twelve Norwegian enameled demitasse spoons (24) length of fish platter 21in (53cm); total weighable silver approximately 66oz troy

---



### 23: A French lyre form clock and a table casket

USD 400 - 600

A French gilt metal mounted marble lyre form easel back table clock  
late 19th century  
With single train movement; together with a Baroque style gilt bronze mounted table casket. (2)  
the clock height 13 1/2in (34cm); width 7 in (18cm)

---



## DTLA Collections and Estates Auction



### 24: A tribal woven figure or mask

USD 50 - 100

An Ethnographic tribal woven, painted and shell mounted figure or mask  
height 13 1/2in (34cm); width 13in (33cm)

---



### 25: Louis XV beechwood buffet, mid-18th century & later

USD 800 - 1,200

A Louis XV carved walnut and beechwood buffet a deux corps  
third quarter 18th century  
height 64in (162.5cm); width 58 1/4in (148cm); depth 26 1/4in (66.5cm)

---



### 26: A large Japanese Imari charger

USD 300 - 500

A large Japanese Imari charger  
early 20th century  
diameter 21 1/4in (54cm)

---



### 27: A group of Meissen porcelain figures

USD 800 - 1,200

A group of five Meissen porcelain figures  
late 19th-20th century  
Each with underglaze blue crossed swords, incised model numbers A64, A71, 15, 30 and 1, various impressed numbers and painted numbers.  
heights ranging from 4 1/2 to 6in (11.5 to 15.3cm)

---



### 28: A patinated bronze model of a monkey

USD 500 - 700

A patinated bronze model of a seated monkey  
modern  
height 51 1/2in (133cm)

---



### 29: A set of three steel fire irons, Jamb

USD 100 - 150

A set of three polished steel fire irons  
probably Jamb  
20th century  
Comprising tongs, poker and shovel, length of poker 31in (79cm)

---



### 30: Five International metalware desk accessories

USD 300 - 500

An International five piece group of metalware desk accessories  
late 19th -20th century  
Comprising an Austrian marble clock, Anton List, an American box, Jennings Bros., a double ink stand, a chamber stick and a lamp.  
the lamp height 16in (41cm); width 7in (18cm)

---



### 31: Eleven Royal Doulton porcelain figures

USD 300 - 500

A group of eleven Royal Doulton porcelain figures  
designed by Leslie Harradine  
Comprising The Bedtime Story (HN2059); Blithe Morning (HN 2021); Bo Peep (HN 1811); Daydreams (HN 1731); Goody Two Shoes (HN2037); Janet (HN 1537); Lydia (HN 1908); May Time (HN 2113); Paisley Shawl (HN 1988); Rose (HN1368) and Sweet Anne (M5); each with green printed factory mark and title, printed or painted model numbers.  
height of tallest 7in (18cm)

---

## DTLA Collections and Estates Auction



### 32: A Continental tufted leather child's daybed

USD 300 - 500

A Continental tufted leather and carved oak child's daybed  
late 19th century  
height 18in (46cm); width 44in (112cm); depth 18in (46cm)

---



### 33: Attrib. Philipp Peter Roos, oil, shepherdess

USD 1,500 - 2,000

Attributed to Philipp Peter Roos (German, c.1655/57 - 1706)  
A Shepherdess and her flock  
oil on canvas  
22 x 34in (56 x 86cm)

---



### 34: A collection of English enamel pill boxes

USD 100 - 150

A collection of English enamel pill boxes  
20th century  
Comprising six boxes by Halcyon Days, four boxes by Bilston and Battersey and four boxes by Crummels & Co, all with printed factory marks, together with two English porcelain gilt metal mounted covered boxes.  
diameter of smallest 1in (2.5cm); width of largest porcelain box 2 3/4in (7cm)

---



### 35: A suite of Edinburgh glass tableware

USD 400 - 600

A suite of Edinburgh glass tableware  
20th century  
Comprising three 6in water glasses, eleven 5 3/8in glasses, ten 4 7/8in champagne coupes, ten 4 3/8in glasses, six 3 1/2in liqueur glasses, one 4 5/8in glass, one 5in glass and twenty rinsers, each with etched factory mark. (62)

---



### 36: Four Eastern Orthodox icons

USD 400 - 600

A group of four Eastern Orthodox icons  
largest 12 1/4 x 10 1/2in (31.5 x 25.6cm)

---



### 37: A Directoire style painted bergere

USD 300 - 500

A Directoire style paint decorated bergere  
20th century  
height 36in (91.5cm); width 27 1/2in (70cm); depth of seat 20in (51cm)

---



### 38: Ernest Berke, oil, On the Trail

USD 800 - 1,200

Ernest Berke (American, 1921-2010)  
On the Trail  
oil on canvas  
signed and dated lower left

---

## DTLA Collections and Estates Auction



### 39: Four Petal tables after Schultz for Knoll

USD 300 - 500

Four small white painted Petal model pedestal tables in the manner of Richard Schultz for Knoll  
modern  
height 19in (48cm); diameter 16 1/2in (42cm)

---



### 40: A Neoclassical style painted pine table

USD 200 - 300

A Neoclassical style painted carved pine occasional table  
modern  
height 26in (66cm); diameter 30 1/4in (77cm)

---



### 41: A Louis XV gilt bronze and tulipwood bureau plat

USD 400 - 600

A Louis XV gilt bronze mounted tulipwood bureau plat  
mid 18th century  
Fitted with two frieze drawers.  
height 30in (76cm); width 48in (122cm); depth 26in (66cm)

---



### 42: A Continental decoupage three panel screen

USD 400 - 600

A Continental decoupage and mahogany three fold floor screen  
late 19th century  
Each panel decorated both sides.  
each panel 65 x 23 1/2in (165 x 59.5cm)

---



### 43: A Neoclassical style stone table

USD 400 - 600

A Neoclassical style stone table  
modern  
height 30 3/4in (78cm); diameter 39 1/4in (99.5cm)

---



### 44: A Japanese Satsuma porcelain vase

USD 200 - 300

A Japanese Satsuma porcelain vase  
height 10 3/4in (27.3cm)

---



### 45: A Biedermeier ebony and birch work table

USD 200 - 300

A Biedermeier ebony inlaid satin birch work table  
early 19th century  
height 28 1/2in (72cm); width 20 1/2in (52cm); depth 15in (35cm)

---



### 46: A Thai sandstone head of a monk, 17th century

USD 250 - 350

A Thai sandstone head of a monk  
17th century  
Previously lacquered, eyes later carved.  
the head height 8in (20cm)

---

## DTLA Collections and Estates Auction



### 47: A group of six Asian devotional objects

USD 400 - 600

A six piece group of Asian devotional objects  
Chinese and Thai  
20th century  
Comprising a giltwood figure of a seated monk, a gilt metal hand of Buddha, a pendant and three figures, the monk height 14in (35.5cm); length 16in (41cm)

---



### 48: A rustic elm low center table, possibly Chinese

USD 250 - 350

A Rustic elm low center table  
possibly Chinese  
height 21 3/4in (55cm); width 73in (185.5cm); depth 25in (63.5cm)

---



### 49: A Chinese celadon, blue and white porcelain vase

USD 200 - 300

A Chinese celadon, blue and white porcelain vase  
Reduced in height, now mounted as a table lamp.  
height excluding electrical fittings 20 1/2 (52cm)

---



### 50: William Adam, oil, Pacific Grove Garden

USD 800 - 1,200

William Adam (English, 1846-1931)  
Pacific Grove Garden  
Oil on canvas laid down on board  
Signed lower left, framed.  
14 x 10in (35.5 x 25.5cm)

---



### 51: A Louis XV fruitwood armoire, 18 century

USD 500 - 700

A Louis XV fruitwood armoire  
second half 18th century  
height 103in (261cm); width 66in (168cm); depth 30in (76cm)

---



### 52: A tufted upholstered tete-a-tete

USD 800 - 1,200

A fully upholstered tufted tete-a-tete  
modern  
height 28in (71cm); width 66in (168cm); depth 30in (76.5cm)

---



### 53: Pair of demilune brass inlaid marble pedestals

USD 200 - 300

A pair of demilune brass inlaid marble pedestals  
20th century  
height 28 1/4in (71.5cm); width 23 1/4in (59cm); depth 13in (33cm)

---



### 54: Pair of Louis XVI style white painted side chairs

USD 500 - 700

A pair of Louis XVI style white painted and red silk side chairs  
modern  
height 32in (81cm); width 21in (54cm); depth of seat 17in (43cm)

---

## DTLA Collections and Estates Auction



### 55: Pair of Chinese blue and white porcelain jars

USD 300 - 500

A pair of Chinese blue and white porcelain jars  
modern  
together with a blue bottle vase. (3)  
height of jars 7 1/4in (18.5cm)

---



### 56: Two decorative lamps

USD 300 - 500

Two decorative lamps  
20th century  
One in the form of a bust of Marie Antoinette on a pedestal, the other a verre eglomise cannister, together with a faux pink mottled covered vase. (3), the taller lamp height to top of head 19in (48cm)

---



### 57: Three Creil et Montereau faux bois pottery plates

USD 200 - 300

Three Creil et Montereau faux bois pottery plates and a faux bois covered trembleuse cup and saucer  
19th century  
Impressed factory marks.  
diameter of plate 8 1/8in (20.5cm); height of saucer 4 3/8in (11cm)

---



### 58: Continental carved walnut stationary cabinet

USD 400 - 600

A Continental carved walnut stationary cabinet  
late 19th century  
Having sixteen hinged drawers with sliding trays and flanked by dual locking stiles.  
height 57 1/2in (146cm); width 34 1/4in (87cm); depth 14in (36cm)

---



### 59: Six piece group of Asian blue & white tableware

USD 400 - 600

A six piece group of Asian blue and white tableware Chinese, Japanese and Thai  
20th century  
Comprising two teapots, a vase, a covered bottle and two sake cups.  
the bottle height 12 1/4in (31cm)

---



### 60: Pair of Philippine narra wood side cabinets

USD 400 - 600

A pair of Philippine carved narra wood side cabinets  
modern  
height 36in (91.5cm); width 47 1/2in (120.5cm); depth 20in (51cm)

---



### 61: A suite of Murano enameled clear glassware

USD 300 - 500

A suite of Murano enamel decorated clear glassware  
Comprising five 5 1/2in mugs, nine 4in double old fashioned, fourteen 3 3/8in old fashioned, five 3 1/8in glasses, one 6in glass and one associated 4 1/8in double old fashioned, some with factory stickers for NM Made in Italy Murano. (35)

---



### 62: A Thai gilt metal figure of a bodhisattva

USD 600 - 800

A Thai gilt metal figure of a bodhisattva  
late 19th/early 20th century  
overall height 32 3/4in (83cm)

---

## DTLA Collections and Estates Auction



### 63: A Neoclassical style low occasional table

USD 150 - 250

A Neoclassical style stellar inlaid carved low occasional table  
20th century  
height 24in (61cm); diameter 29in (73.5cm)

---



### 64: Abstract Modern composition, oil on canvas

USD 150 - 250

Artist Unknown (20th century)  
abstract work  
oil on canvas  
78 1/2 x 59in (199.5 x 150cm)

---



### 65: A Neoclassical style walnut side table

USD 100 - 150

A Neoclassical style walnut side table fitted with a single drawer  
post 1950  
height 29 1/4in (74cm); width 35 1/4in (90cm); depth 25in (64cm)

---



### 66: A Louis XVI style mahogany bouillotte table

USD 300 - 500

A Louis XVI style mahogany bouillotte table  
circa 1900  
Inset with a marble top, fitted with two slides and two drawers to the frieze.  
height 29 1/4in (74cm); diameter 25 3/4in (65.5cm)

---



### 67: An English painted Royal Coat of Arms trade sign

USD 200 - 400

An English polychrome painted Royal Coat of Arms trade sign  
early 20th century  
height 20in (51cm); width 18 1/4in (46cm)

---



### 68: Three Louis XVI style bouillotte lamps

USD 500 - 700

Three Louis XVI style gilt bronze and tole bouillotte lamps  
modern  
A pair and a similar example the largest  
height 25in (63.5cm); diameter 18 1/2in (47cm)

---



### 69: A Chinese porcelain dish

USD 300 - 500

A Chinese porcelain dish  
diameter 14 3/4in (37.5cm)

---



### 70: Four Continental glass articles

USD 300 - 500

Four Continental glass articles  
20th century  
Comprising a pair of Baccarat candlesticks in the Bambous pattern, a Lalique Irene circular pin tray and an Orrefors vase,  
each with etched factory mark.  
height of candlesticks 9in (23cm); height of vase 7 3/4in (19.5cm); diameter of Lalique dish 3 3/4in (9.5cm)

---

## DTLA Collections and Estates Auction



### 71: Three large Italian Maiolica tiles

USD 1,000 - 1,500

A group of three large Italian maiolica tiles  
20th century  
dimensions 20 x 19 3/4in (51 x 50cm) and 15 1/2 x 15 1/2in (39.5 x 39.5cm)

---



### 72: Two 14K gold, cultured pearl & diamond brooches

USD 500 - 700

Two fourteen karat gold, cultured pearl and diamond brooches  
One of twisted wire motif set with round cultured pearls and one foliate motif set with nugget pearls and single-cut diamonds.  
gross weight for the pair: 9.4 dwt

---



### 73: Four Continental gilt bronze table articles

USD 400 - 600

Four Continental gilt bronze table articles  
19th-early 20th century  
Comprising a Viennese enamel miniature vase, a circular box with portrait miniature, signed and a pair of busts of babies.  
the vase height 5 1/2in (14cm)

---



### 74: A George III style mahogany serpentine chest

USD 400 - 600

A George III style mahogany serpentine chest of drawers  
Baker  
modern  
height 33in (84cm); width 57in (145cm); depth 24in (61cm)

---



### 75: Continental blanc de chine porcelain centerpiece

USD 150 - 200

A Continental blanc de chine porcelain table centerpiece  
20th century  
Comprising eight musical putti on plinths and eight small jardinieres, underglaze blue crowned N marks.  
height of tallest figure 7 3/4in (19.5cm)

---



### 76: Nine pieces of Chinese blue and white tableware

USD 500 - 700

A nine piece group of Chinese blue and white tableware  
19th - 20th century  
Comprising three seal paste boxes, a footed dish, a footed bowl with brown glazed exterior, a plate and three small dishes.  
the larger footed dish diameter 9 3/4in (25cm)

---



### 77: Five Lladro porcelain groups

USD 200 - 300

Five Lladro porcelain groups  
20th century  
Comprising a basket of puppies, puppy with an urn of flowers, cat with an urn of flowers, girl with a cat and a dog and a girl with a basket of flowers and a dog, blue printed factory marks.  
heights ranging from 4 1/4 to 8 1/2in (10.7 to 21.5cm)

---



### 78: A cultured pearl necklace with gold clasp

USD 600 - 800

A cultured pearl necklace with a fourteen karat gold clasp  
Comprised of 8.5-9.0mm cultured pearls.  
length 32in (81.25cm)

---



## DTLA Collections and Estates Auction



### 79: Twelve Continental clear and red wine glasses

USD 400 - 600

A set of twelve Continental cut cranberry flash and clear wine glasses  
height 7 3/4in (19.7cm)

---



### 80: David Goldhagen, Flying Pod, glass

USD 200 - 300

David Goldhagen (American, 20th century)  
Flying Pod  
glass sculpture, signed and dated 7/91 to underside, with lucite stand  
height 7 1/2in (19cm); diameter 25 1/2in (65cm), not including stand

---



### 81: A pair of Bohemian white and green glass vases

USD 300 - 500

A pair of Bohemian white overlaid cut to green glass vases, now mounted as table lamps  
height to finial 33in (84cm)

---



### 82: A Renaissance style repousse silver clad casket

USD 600 - 800

An Italian Renaissance style repousse silver clad table casket  
Apparently unmarked, 20th century  
height 8in (20cm); length 9 3/4in (25cm)

---



### 83: A George V sterling silver salver, 1922

USD 500 - 700

A George V sterling silver circular footed salver  
Goldsmiths & Silversmiths Co., Sheffield 1922  
height 1 1/4in (3cm); diameter 13 1/4in (33.5cm); weight approximately 30oz troy

---



### 84: Continental School, Via Dolorosa & still life

USD 200 - 300

Continental School  
mid-20th century  
Two works: Via Dolorosa, Jerusalem and Still Life with Glass of Water  
oil on canvas  
the first indistinctly signed lower left, the other unsigned, the larger 21 x 17 (53 x 43cm)

---



### 85: Four scallop form low chairs

USD 800 - 1,200

A group of four scallop form low chairs  
one, late 19th century; three, modern  
Two lacking upholstery and castors.  
height 34in (86.5cm); width 39 1/2in (75cm); depth 34in (86.5cm)

---



### 86: A Greek red figure askos, Apulian

USD 700 - 900

A Greek red figure askos  
South Italy, Apulian  
circa 4th century BCE  
height 8 1/4in (21cm); length 7in (18cm)

---

## DTLA Collections and Estates Auction



### 87: An English inlaid and ebonized stationary box

USD 300 - 500

An English gilt metal mounted brass and burl wood inlaid ebonized stationary box second half 19th century  
height 16 1/2in (42cm); width 12 1/2in (32cm); depth 6 3/4in (17cm)

---



### 88: A large copper double slipper bathtub

USD 300 - 500

A large copper double slipper bathtub  
modern  
height 28 1/4in (72cm); width 69in (176cm); depth 32in (81.5cm)

---



### 89: Six Chinese porcelain and giltwood objects

USD 400 - 600

Six Chinese porcelain and giltwood objects  
19th century  
Comprising a brush water pot, a pair of pedestal dishes, a bowl and two mythical beasts.  
the taller figure on stand height 8 1/4in (21cm)

---



### 90: A gilt metal and plate glass coffee table

USD 300 - 500

A gilt metal and plate glass coffee table  
modern  
height 15in (38cm); square 44in (112cm)

---



### 91: A group of five Japanese porcelain sake bottles

USD 300 - 500

A group of five Japanese porcelain sake bottles  
Late Meiji Period and later  
Comprising two pairs of Kutani bottles and a blue and white bottle.  
the largest height 10 1/2in (27cm)

---



### 92: Two German bisque headed dolls

USD 150 - 200

Two German bisque headed dolls  
One by Armande Marseille with jointed composition body, marked Armande Marseille 390n A12M, the other with weighted eyes, kid body and jointed composition arms.  
both 28in (71cm) tall

---



### 93: A pair of African near life size figures

USD 800 - 1,200

A pair of African near life-size carved figures  
height 62 1/2in (159cm)

---



### 94: A Tibetan Thangka

USD 200 - 300

A Tibetan Thangka  
20th century  
overall 41 3/4 x 18 1/2in (106 x 47cm)

---

## DTLA Collections and Estates Auction



### 95: A suite of Baccarat Don Perignon glass stemware

USD 600 - 800

A suite of Baccarat glass stemware in the Dom Perignon pattern  
20th century

Comprising eight 9in champagne flutes, nine 9in glasses, three 7 3/8in glasses, together with three other 6 1/8in Baccarat wine glasses, each with etched factory mark. (23)

---



### 96: A Regence style inlaid walnut commode

USD 500 - 700

A Regence style gilt bronze mounted inlaid walnut commode  
modern

Having two short and two long drawers, surmounted by a marble top.  
height 34 1/2in (87.5cm); width 50in (127cm); depth 23 1/4in (59cm)

---



### 97: Eight pieces of Chinese porcelain

USD 600 - 800

An eight piece group of Chinese porcelain  
19th century and later

Comprising three various rice bowls, a square bowl, two brush washes a white footed bowl and white footed small dish or stand.  
the white bowl height 3 1/4in (8cm); diameter 8in (20cm)

---



### 98: Two multi-colored wool rugs

USD 150 - 250

Two multi-colored wool rugs  
20th century

dimensions of largest approximately 5ft 8in x 3ft 4in (173 x 102cm)

---



### 99: Three Hutschenreuther porcelain groups

USD 600 - 800

Three Hutschenreuther limited edition porcelain groups: A Family Affair, Brunftzeit and Off Season  
after models by Gunther Granget

Each with green printed factory mark, titles and edition numbers.  
heights ranging from 6 to 17 3/4in (15.2 to 45cm)

---



### 100: A Chinese blue and white Hundred Antiques vase

USD 1,500 - 2,000

A Chinese blue and white vase with one hundred antiques decoration, Qianlong mark, late Qing period  
height 21 1/4in (54cm)

---



### 101: A pair of Louis XV style walnut commodes

USD 400 - 600

A pair of Louis XV style walnut commodes  
Henredon

modern  
height 35 1/4in (89.5cm); width 44in (112cm); depth 20in (51cm)

---



### 102: A pair of Victorian style upholstered armchairs

USD 300 - 500

A pair of Victorian style fully upholstered armchairs  
post 1950

The turned legs with brass terminals.  
height 32in (81cm); width 33 1/2in (85cm); depth of seat 25 1/2in (65cm)

---

## DTLA Collections and Estates Auction



### 103: A pair of Continental porcelain cache pots

USD 200 - 300

A pair of Continental porcelain cache pots  
late 19th century  
Pseudo underglaze blue Augustus Rex mark.  
height 6 1/2in (16.5cm)

---



### 104: A Noel, two studies for a landscape, gouache

USD 200 - 400

A Noel (19th century)  
Two Studies for a Landscape with Stream  
gouache on paper  
each signed lower left 9 x 7in (23 x 18cm)

---



### 105: A French patinated bronze Cupid, Barbedienne

USD 150 - 250

A French patinated bronze Cupid form seal  
F. Barbedienne foundry, Paris  
late 19th century  
Cipher IE, on ebonized base, height of seal 3 1/4in (8cm)

---



### 106: Five Eastern Orthodox wood, bronze & enamel icons

USD 200 - 300

A group of five Eastern Orthodox painted wood, bronze and enamel icons 18th-19th century Some incomplete. the triptych height 11 3/4in (30cm); width (closed) 8in (20cm)

---



### 107: After Thomas & William Daniel, two lithographs

USD 100 - 200

After Thomas and William Daniela  
companion pair of photo lithographs of Indian landscapes.  
sight 19 1/4 x 26in (49 x 66cm)

---



### 108: A Lalique frosted & clear glass Pinsons bowl

USD 400 - 600

A Lalique frosted and clear glass bowl: Pinsons  
20th century  
Etched Lalique®France.  
height 3 3/4in (9.5cm); diameter 9 1/4in (23.5cm)

---



### 109: An American maple chest of drawers

USD 300 - 500

An American maple chest of drawers  
second quarter 19th century  
height 46 3/4 (119cm); width 40 1/4in (102cm); depth 21 1/2in (54.5cm)

---



### 110: A Louis XV style gilt metal & glass chandelier

USD 600 - 800

A Louis XV style gilt metal, blown, cut, colored and clear glass six light chandelier  
20th century  
height approximately 33in (84cm); diameter approximately 22 1/2in (57cm)

---

## DTLA Collections and Estates Auction



### 111: A Baroque style wrought iron and tile low table

USD 400 - 600

A Baroque style tiled and wrought iron low occasional table  
post 1950  
height 16 3/4in (42.5cm); width 48 1/2in (123cm); depth 48 1/2in (123cm)

---



### 112: Wedgwood olive green jasperware articles

USD 100 - 150

A collection of Wedgwood olive green jasperware articles  
20th century  
Comprising a pair of bowls, compote, two covered boxes and seven vases, each impressed WEDGWOOD and MADE IN ENGLAND. (13)  
height of compote 3 1/2in (9cm); height of tallest vase 5 1/4in (13.5cm)

---



### 113: A Louis XV style walnut & elm dining table

USD 800 - 1,200

A Louis XV style carved walnut and elm inlaid dining table  
20th century  
height 31 1/4in (79cm); width 77 3/4in (197.5cm); depth 44 3/4in (113.5cm)

---



### 114: A La Cornue Grand Palais Chateau series range

USD 4,000 - 6,000

A La Cornue Grand Palais Chateau Series eight burner range with side cabinets  
height 38in (97cm); width 128in (325cm); depth 31in (89cm)

---



### 115: Six Chinese framed embroidered silk fragments

USD 200 - 300

A group of six Chinese framed embroidered silk fragments  
20th century  
the largest overall 24 x 13 3/4in (61 x 35cm)

---



### 116: A Japanese marquetry inlaid etagere cabinet

USD 1,500 - 2,000

A good quality Japanese marquetry inlaid etagere cabinet  
early 20th century  
height 60in (152cm); width 28in (71cm); depth 12 1/2in (32cm)

---



### 117: A George III mahogany secretary bookcase

USD 1,000 - 1,500

A George III mahogany secretary bookcase  
late 18th century  
The hinged fall enclosing a fitted interior of small drawers and pigeon holes about a central cupboard.  
height 87in (221cm); width 41 1/4in (105cm); depth 20 3/4in (52.5cm)

---



### 118: Danish porcelain models of cats and a dog

USD 150 - 200

A group of Danish porcelain models of cats and a dog  
20th century  
Comprising two by Bing & Grondahl, one by Dahl Jensen, two by Royal Copenhagen, various factory marks, together with a Royal Doulton model of a cat. (6)  
heights ranging from 2 3/4 to 7 1/2in (7 to 19cm)

---

## DTLA Collections and Estates Auction



### 119: A pair of George III mahogany doors and surrounds

USD 400 - 600

A pair of George III mahogany doors and surrounds  
fourth quarter 18th century  
Having two long doors above two short doors.  
height 101 1/2in (258cm); width 40 1/4in (102.5cm)

---



### 120: Dutch style walnut demilune side cupboard

USD 300 - 500

A Louis XVI style marquetry and burl inlaid walnut demilune side cupboard  
modern  
Fitted with a single drawer above a closed cupboard.  
height 38 1/4in (97cm); width 38 1/2in (98cm); depth 19 1/2in (49.5cm)

---



### 121: A pair of Louis XV style oak buffets a deux corps

USD 800 - 1,200

A pair of Louis XV style carved oak buffets a deux corps  
early 20th century  
height 90 1/4in (229cm); width 52 3/4in (134cm); depth 19in (48cm)

---



### 122: A seven piece suite of sunflower garden furniture

USD 500 - 700

A whimsical seven piece suite of sunflower carved garden furniture  
modern  
Comprising a table and six stools (two stools painted white).  
the table height 31 1/2in (80cm); diameter 23 1/2in (60cm)

---



### 123: A twelve piece group of Chinese hardstone objects

USD 300 - 500

A twelve piece group of Chinese hardstone objects  
20th century  
Amethyst, jade, soapstone and other including a miniature table screen, bowls, jars, a ladle, a hair ornament and other items.  
length of ladle 9 3/4in (25cm)

---



### 124: A pair of verdigris patinated metal garden chairs

USD 50 - 100

A pair of verdigris patinated metal garden chairs  
modern  
height 34in (86.5cm); width 19 3/4in (50cm); depth 23in (58cm)

---



### 125: Four Louis XV style bergere frames & chaise frames

USD 300 - 500

A set of four Louis XV style bergere frames, together with pair of chaise frames  
modern  
Lacking upholstery and two partially upholstered armchairs. (8)  
height of bergere 35in (89cm); width 31 1/2in (80cm); depth of seat 24in (61cm)

---



### 126: Five circular white painted metal garden tables

USD 300 - 500

A set of five circular white painted metal garden tables  
J Art Iron, Los Angeles  
post 1950  
height 25 1/4in (64cm); diameter 20in (51cm)  
Provenance: by repute, from the collection of Mrs. Henry Ford II.

---

## DTLA Collections and Estates Auction



### 127: English silver condiment ware and accessories

USD 600 - 800

A collection of English silver condiment ware and accessories various makers

Comprising a set of four octagonal salts by Hawkesworth, Eyre & Co., 1846, a pair of salts and a mustard pot by C.S. Harris & Sons, 1905, a mustard pot by John Evans II, 1846, three spoons, a pair of toast racks by Hukin & Heath, 1901 and a pair of casters, marks rubbed, 1905, some monogrammed or engraved. (15) length of toast rack 4 1/4in (11cm); total weighable silver approximately 33oz troy

---



### 128: A Persian rug

USD 300 - 500

A Persian rug  
dimensions approximately 6ft 10in x 4ft in (208 x 132cm)

---



### 129: M Wilcomb, mixed media and wood under plexiglass

USD 100 - 150

M Wilcomb (20th century)  
ID  
Mixed media and wood under plexiglass  
overall height 49 1/2in (126cm); length 10in (25.5cm)

---



### 130: An Egyptian carpet

USD 350 - 550

An Egyptian carpet  
dimensions approximately 8ft 5in x 8ft (257 x 244cm)

---



### 131: A Federal style inlaid mahogany corner cupboard

USD 250 - 350

A Federal style inlaid mahogany corner cupboard  
20th century  
height 83 1/2in (212cm); width 40in (101.5cm); depth 20 1/2in (52cm)

---



### 132: Two engraved maps of Rome, 18th century

USD 100 - 200

Two engraved maps of Rome  
18th century  
sight dimensions 15 x 10 1/4in (30 x 26cm)

---



### 133: Two Chinese porcelain vases decorated with prunus

USD 200 - 300

A near pair of Chinese porcelain vases decorated with prunus  
Now mounted as table lamps.  
height excluding electrical fittings 15 1/4in (39cm)

---



## DTLA Collections and Estates Auction



### 134: A Continental alabaster bust of a maiden

USD 400 - 600

A Continental alabaster bust of a maiden  
late 19th-early 20th century  
Together with a patinated bronze figure of a leaping boar. (2)  
the bust height 9in (23cm); width 7 1/2in (19cm)

---



### 135: Spode porcelain Lowestoft Flowers part service

USD 300 - 500

An assembled Spode porcelain part dinner service in the Lowestoft Flowers pattern  
Comprising twelve 10 3/4in dinner plates, thirteen 7 3/4in salad plates, six 6 1/2in side plates, seven 6 1/4in bread and butter plates, eight 6 3/4in soup bowls, four cereal bowls, eight fruit bowls, one 9 1/2in oval serving bowl, one square form tray, one 15in oval platter, covered sugar, cream jug, eleven tea cups and twelve saucers, green printed marks and red and black printed factory marks.

---



### 136: An American Classical mahogany pedestal sideboard

USD 700 - 900

An American Classical mahogany pedestal sideboard  
first half 19th century  
height 46in (118cm); width 72in (183cm); depth 22in (56cm)

---



### 137: An inlaid mahogany miniature Wellington chest

USD 100 - 150

An inlaid mahogany miniature Wellington chest  
circa 1900  
height 17 1/2in (44.5cm); width 13 3/4in (35cm); depth 10in (25.5cm)

---



### 138: A pair of Louis XVI style gilt bronze wall lights

USD 600 - 800

A pair of Louis XVI style gilt bronze twin branch wall lights  
early 20th century  
height 20in (51cm); width 13 1/2in (34cm)

---



### 139: Donal Lumbert, mixed media, Sky Scan Series

USD 100 - 200

Donal Lumbert (American, 20th century)  
Sky Scan Series #31 and Sky Scan Series #38  
mixed media on aluminum, dated 1981 and 1982, respectively  
36 x 48in (91.5 x 122cm)  
Provenance: with G.W. Ernstein Company, Inc., New York

---



### 140: A Chinese shell and harstone inlaid floor screen

USD 1,000 - 1,500

A Chinese gilt heightened shell inlaid and hardstone mounted six fold floor screen  
height 71 3/4in (182cm); width of each panel 16in (40.5cm)

---

## DTLA Collections and Estates Auction



### 141: Louis XVI style vanity mirror & pair candlesticks

USD 600 - 800

A Louis XVI style gilt bronze and verde antico marble two light vanity mirror late 19th-early 20th century  
Together with a pair of Louis XVI style gilt bronze candlesticks. (3)  
the mirror height 17 3/4in (45cm); width 8in (20cm)

---



### 142: Thai copper alloy Buddha head, 15th/16th century

USD 150 - 200

A Thai copper alloy Buddha head  
15th/16th century  
height 6 1/2in (16.5cm); width 3in (7.5cm)

---



### 143: A Chinese watercolor painting on silk

USD 400 - 600

A Chinese watercolor painting on silk  
first quarter 20th century  
Possibly depicting Lan Caihe carrying a basket of flowers.  
sight size 33 x 16in (84 x 41cm)

---



### 144: A Baroque style pine refectory table

USD 600 - 800

A Baroque style pine refectory table  
composed of antique elements  
height 30in (76cm); width 87in (221cm); depth 30 1/4in (77cm)

---



### 145: A Continental Rococo style carved giltwood mirror

USD 500 - 700

A Continental Rococo style carved giltwood mirror  
19th century  
height 38 1/2in (98cm); width 31in (79cm)

---

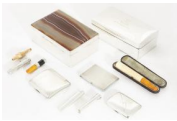


### 146: A William IV style leather and mahogany bergere

USD 300 - 500

A William IV style leather upholstered mahogany bergere  
modern  
height 39in (99cm); width 36 1/2in (68cm); depth of seat 21in (54cm)

---



### 147: International silver, gold & plastic smoking items

USD 600 - 800

An eleven piece group of International silver, gold and plastic smoking accessories  
by various makers, late 19th-20th century  
Comprising two cigarette boxes, three cigarette cases and six various cigar and cigarette holders, some pieces monogrammed or inscribed. the larger box height 2 1/2in (6.5cm); width 6 3/4in (17cm); depth 4 1/2in (11.5cm); total weighable silver approximately 10oz troy

---

## DTLA Collections and Estates Auction



### 148: A monochrome map of Paris in nine panels

USD 200 - 300

A monochrome map of Paris in nine panels  
in ebonized frames  
dimensions of each frame 19 x 23in (48.5 x 58.5cm)

---



### 149: A Regence style painted suite of dining furniture

USD 1,500 - 2,500

A Regence style paint decorated suite of dining furniture  
20th century  
Comprising a mahogany and painted extension dining table, a console and a matched set of eight dining chairs. (10),  
height of dining table 31in (78.5cm); width 44in (11.5cm); length 78in (198cm); length extended 144in (366cm); height of console 37 1/2in (95cm); width 84 1/2in (214.5cm); depth 24 1/4in (61.5cm); height of side chair 42 1/4in (107cm); width 22 1/2in (57cm); depth of seat 19in (48cm); height of armchair 45 1/2 (115.5cm); width 25in (63.5cm); depth of seat 18 1/4in (46cm)

---



### 150: Albert DeRome, Above Fresh Water Lagoon Orick

USD 500 - 700

Albert DeRome (American, 1885-1959)  
Above Fresh Water Lagoon, Orick, Humboldt County, 1918  
Watercolor  
Signed lower right  
sight dimensions 7 1/2 x 11 1/2in (19 x 29cm)

---



### 151: Four Rococo style carved giltwood side chairs

USD 700 - 900

A set of four Rococo style carved giltwood side chairs  
circa 1900  
height 35 1/4in (89cm); width 17in (43cm); depth of seat 15in (38cm)

---



### 152: Pair Baroque style marquetry secretary cabinets

USD 200 - 300

A pair of Baroque style marquetry inlaid and carved mixed wood secretary cabinets  
20th century  
Each with a fall front drawer enclosing a fitted interior.  
height 64in (162.5cm); width 39in (99cm); depth 19 1/2in (49.5cm)

---



### 153: Twenty three Chinese jade carvings and buttons

USD 400 - 600

A group of twenty three Chinese jade carvings and buttons  
Bats, butterflies, flowers and other.  
the largest diameter 2in (5cm)

---



### 154: An eight piece collection of Napoleonica

USD 500 - 700

An eight piece collection of Napoleonica  
19th-20th century  
Comprising a white composition bust, a terracotta composition bust, a gilt metal equestrian figure, a synthetic scrimshaw tooth, and three prints, together with a painted metal figure of a soldier. (9)  
the white bust overall height 9 3/4in (25cm)

---

## DTLA Collections and Estates Auction



### 155: A Regency giltwood girandole convex mirror

USD 600 - 800

A Regency giltwood and parcel ebonized two light girandole convex mirror  
early 19th century and later  
height 36in (91.5cm); width 24in (61cm)

---



### 156: A five piece group of Chinese Peking glass

USD 400 - 600

A five piece group of Chinese Peking glass  
second quarter 20th century and later  
Comprising two vases, one mounted as a lamp, a brush or whisk handle, a cup and a small jar.  
the yellow vase height 10 3/4in (27cm)

---



### 157: Four Victorian carved mahogany side chairs

USD 300 - 500

A set of four Victorian carved mahogany side chairs  
mid 19th century  
Together with a Regency carved and caned klismos side chair.  
height 33 1/2in (85cm); width 18 3/4in (47.5cm); depth of seat 15 1/2in (39cm)

---



### 158: A French mahogany and faux binding side cupboard

USD 250 - 350

A French inlaid mahogany and faux binding side cupboard  
late 19th century  
Surmounted by a marble top with gilt bronze gallery.  
height 29 3/4in (75.5cm); width 18in (45.5cm); depth 13in (33cm)

---



### 159: A Dutch carved oak demilune side table

USD 500 - 700

A Dutch carved oak demilune side table  
circa 1800  
height 29 1/2in (75cm); width 31 1/2in (80cm); depth 16 3/4in (42.5cm)

---



### 160: American School, oil, Study of a Boy's head

USD 50 - 100

American School (late 19th/early 20th century)  
Study of a boy's head  
oil on canvas  
10 1/2 x 9in (27 x 23cm)

---



### 161: Stephen Buckley, abstract, color lithograph

USD 300 - 500

Stephen Buckley (British, b. 1944)  
Abstract  
color lithograph  
signed in pencil, numbered 11/25 and dated 1983, together with another plate  
30 x 22 1/2in (76 x 57cm)

---



### 162: Continental 935 silver and enamel minaudiere

USD 1,500 - 2,000

A Continental 935 standard silver and enamel minaudiere  
maker's mark EWC, probably German or Swiss, circa 1900  
Decorated with a portrait of a Swiss Shepherd (Berger Blanc Suisse), with box (2).  
height 3 3/4in (9.5cm); width 3in (7.5cm); total gross weight approximately 7.5oz troy

---

## DTLA Collections and Estates Auction

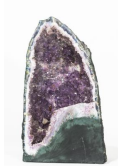


### 163: A pair of porcelain vases in the European taste

USD 800 - 1,200

A pair of porcelain vases in the European taste  
modern  
With pseudo Mintons mark.  
height 26 3/4in (65.5cm)

---



### 164: An amethyst geode

USD 300 - 500

An amethyst geode  
height 15 3/4in (40cm)

---



### 165: Four pairs Neoclassical style brass candlesticks

USD 300 - 500

Four pairs of Continental Neoclassical style brass candlesticks  
19th-20th century  
the largest height 10 1/4in (26cm)

---



### 166: A nine piece group of Chinese porcelain

USD 300 - 500

A nine piece group of Chinese porcelain  
20th century and later  
Comprising three Blanc de Chine figures, a rectangular bowl, two round bowls, a vase and a jar (lacking cover).  
the tallest figure height 9 1/4in (23.5cm)

---



### 167: Three Continental porcelain articles

USD 400 - 600

Three Continental porcelain articles  
Comprising a Dresden Potschappel ecuelle, cover and stand, Ludwigsburg small two handled tray and a Herend covered biscuit box  
in the Bouquet of Flower pattern, printed or underglaze factory marks.  
height of ecuelle 6 1/2in (16.5cm); height of biscuit box 6 3/4in (17.2cm)

---



### 168: A French shell inlaid cartel clock

USD 300 - 400

A French shell inlaid cartel clock  
19th century  
height 24in (61cm); width 19in (48.3cm)

---



### 169: A ten piece group of Japanese Satsumaware objects

USD 400 - 600

A ten piece group of Japanese Satsumaware objects and vessels  
20th century  
Comprising three seal paste boxes, four buckles, an asymmetric box, a small vase and a bowl.  
the bowl height 2in (5cm); diameter 5in (13cm)

---



### 170: A pair of Belle Epoque style six light chandeliers

USD 600 - 800

A pair of Belle Epoque style tole and porcelain six light chandeliers  
post 1950  
height approximately 24in (61cm); diameter approximately 32in (82cm)

---

## DTLA Collections and Estates Auction



### 171: A Schlaggenwald porcelain part dinner service

USD 300 - 500

A Schlaggenwald porcelain part dinner service  
Comprising nineteen 9 5/8in plates, five 9 3/4in plates, twelve 7 1/2in side plates, twelve 6 1/2in bread and butter plates, twelve 9 3/4in soup bowls, three graduated oval platters (lengths 12 7/8 to 16in), one 11 3/8in circular platter, two serving bowls (9 1/2 and 10 1/4in diameter), two circular dished platters (12 1/2 and 12 5/8in diameter), one small oval pickle dish, sauce tureen with ladle on fixed stand, covered sauce tureen on stand, covered tureen and one footed open salt, green factory marks. (70)



### 172: Reuven Rubin, Godseekers, portfolio and stand

USD 500 - 700

Reuven Rubin (Israeli, 1893-1974)  
Godseekers, Bineth Gallery, Jerusalem, 1966  
ten woodcuts numbered and signed, framed and matted, with album and stand, sight 12 x 14 (30 1/2 x 35 1/2in); the stand height 50 1/4in (127cm); width 16in (41cm); depth 16in (41cm)



### 173: A German porcelain basin

USD 600 - 800

A German porcelain basin  
late 18th/early 19th century  
Centered by a rural landscape, with three insects to the wide rim, interlaced blue Cs mark, incised H.  
diameter 17in (43cm)



### 174: Tom Perkinson, pastel, Central Park at Night

USD 200 - 300

Tom Perkinson (American, b. 1940)  
Central Park at Night  
pastel and colored pencil on paper mounted, signed lower right  
8 x 8in (20.25 x 20.25cm)



### 175: A group of assorted women's jewelry

USD 100 - 150

A group of assorted women's jewelry  
Including eight various bead necklaces, two neck collars, two bangle bracelets, four various pendants, a group of jadeite beads, a stone inset gilt metal notebook cover; together with a pair of cufflinks and a watch fob. (20)



### 176: A Louis XVI style fruitwood writing table

USD 200 - 300

A Louis XVI style fruitwood writing table  
modern  
height 27 3/4in (71cm); width 24in (61cm); depth 15 1/2in (39.5cm)



### 177: Bendix Model 526C & Arvin Model 444 Midget radio

USD 400 - 600

A Bendix Model 526C catalin and an Arvin Model 444 'Midget' chrome table top radio  
circa 1946  
The Bendix with green body with black grille, 2pcs.  
height of Bendix 6 3/4in (17in ); length 11in (28cm); depth 6 1/2in (16.5cm)

## DTLA Collections and Estates Auction



### 178: A Rococo style rock crystal six light chandelier

USD 800 - 1,200

A Rococo style gilt metal, rock crystal and glass six light chandelier  
20th century  
height approximately 29 1/2in (75cm); diameter approximately 26in (66cm)

---



### 179: 18K white gold, cultured pearl & diamond pendant

USD 300 - 500

An eighteen karat white gold, cultured pearl and diamond pendant  
Centering one 3/4 round cultured pearl surrounded by round brilliant-cut diamonds, estimated total diamond weight: 0.70 carat, accompanied by a nine carat white gold curb link chain. chain length 16in., gross weight: 5.3 dwt.

---



### 180: Group of sixteen Chinese carved hardstone animals

USD 400 - 600

A group of sixteen Chinese carved hardstone animals  
20th century  
Including foo dogs, rabbits, horses, an ox and others; together with a porcelain panda (17)

---



### 181: A collection of eighteen mineral specimens

USD 500 - 700

A collection of eighteen mineral specimens  
Comprising three pairs of cut agate book ends, polished agate egg with druzy interior, one large polished quartz point, several crystal and smokey quartz points, amethyst geode sections one with a zoomorphic carving, a small petrified wood and fossilized teeth.  
the largest height 6in (15cm); width 3 1/4in (8cm)

---



### 182: An Aubusson carpet, late 19th century

USD 300 - 500

An Aubusson carpet  
late 19th century  
dimensions approximately 16ft x 10ft (488 x 305cm)

---



### 183: Metal, gold, & platinum watches & instruments

USD 150 - 250

A collection of metal, gold, gold plated and platinum watches and instruments  
Including; a platinum wristwatch with rose-cut diamond bezel and a nine carat white gold mesh bracelet; two metal stopwatches by Lemania; a gold plated skeletonized pocket watch by Hebdomas; a gold plated chronograph pocket watch with date and phases of the moon by Henri Berney Blondeau; a .935 silver pocket watch with chain; a metal orienteering compass and a gold plated wrist watch by Tissot. (37)

---



### 184: A fourteen piece group of Chinese jade objects

USD 800 - 1,200

A fourteen piece group of Chinese jade objects  
19th century and later  
Including boxes, carvings, plaques, dress clips and a disk. the stag and duck group height 2in (5cm); length 3 1/2in (9cm)

---



## DTLA Collections and Estates Auction



### 185: A Continental inlaid suite of seating furniture

USD 400 - 600

A Continental inlaid mixed wood suite of seating furniture  
late 19th century

Comprising a settee, pair of armchairs and four side chairs.

height of settee 32 1/4in (82cm); width 50 1/4in (127.5cm); depth of seat 20 1/2in (52cm); height of armchairs 32 3/4in (83cm); width 25 3/4in (65.5cm); depth of seat 19 3/4in (50cm); height of side chairs 40 3/4in (103.5cm); width 18 3/4in (47.5cm); depth of seat 16 1/2in (42cm)

---



### 186: A Chinese Export Famille Rose garden seat

USD 200 - 300

A Chinese Export Famille Rose garden seat  
late 20th century

height 19 1/2in. (49.5cm); diameter 13in (33cm)

---



### 187: Asian ceramic & bronze objects, Ming and later

USD 400 - 600

A seven piece group of Asian ceramic and bronze objects  
Chinese and Thai

Ming Dynasty and later

Comprising three vases, a dish, a footed dish, a water pit and a censer.  
the largest vase height 9 1/4in (24cm)

---



### 188: A Continental Baroque style refectory table

USD 600 - 800

A Continental Baroque style walnut and oak refectory table  
incorporating antique and later elements

height 31 3/4in (80.5cm); width 98 3/4in (251cm); depth 26in (66cm)

---



### 189: Chinese Cizhouware figure of a boy & temple lion

USD 500 - 700

A Chinese Cizhouware figure of a boy  
probably Ming Dynasty

together with a Cizhou style figure of a temple lion. (2)  
the boy height 10 1/4in (27cm)

---



### 190: A painted silver figure of a panda bear and cub

USD 1,000 - 1,500

A painted sterling silver figure of a panda bear and cub: The Precious One  
Larry McFeran 1987

Signed, copyright dated and numbered 28/280, mounted on a marble base.

overall height 9 1/2in (24cm); overall square 9in (23cm); silver weight approximately 100oz troy

---



### 191: A Continental bird's eye maple side cupboard

USD 800 - 1,200

A Continental parcel ebonized bird's eye maple side cupboard

19th century

height 38 1/4in (97cm); width 50in (127cm); depth 21 3/4in (55.5cm)

---

## DTLA Collections and Estates Auction



### 192: Neoclassical style chinoiserie decorated commode

USD 400 - 600

A Neoclassical style blue and gilt chinoiserie decorated commode  
post 1950  
height 32in (81cm); width 46in (117cm); depth 21 1/4in (54cm)

---



### 193: A patinated metal five light chandelier

USD 250 - 350

A patinated metal five light chandelier  
Each arm surmounted by a rooster.  
height approximately 24in (61cm); width approximately 31in (79cm)

---



### 194: A pair of Hollywood Regency ebonized armchairs

USD 200 - 300

A pair of Hollywood Regency silver metal mounted ebonized armchairs  
modern  
height 36 3/4in (93cm); width 27 3/4in (70.5cm); depth of seat 18in (45.5cm)

---



### 195: A French walnut and Vernis Martin vitrine

USD 800 - 1,200

A French gilt bronze mounted walnut and Vernis Martin vitrine  
circa 1900  
Surmounted by a marble top.  
height 62 3/4in (159.5cm); width 35 1/2in (90cm); depth 15 1/2in (39.5cm)

---



### 196: Six Baroque style stained beechwood side chairs

USD 200 - 300

A set of six Continental Baroque style stained beechwood side chairs  
early 20th century  
height 43in (109cm); width 20in (51cm); depth of seat 18in (46cm)

---



### 197: Three gem-set and fourteen karat gold rings

USD 1,000 - 1,500

Three gem-set and fourteen karat gold rings  
Including a cultured pearl and old mine-cut diamond three band ring; a citrine set ring and one with crescent shape top set with a cultured pearl and rose-cut diamonds.

---



### 198: Chinese hardstone & porcelain beads & tassels

USD 100 - 150

A group of Chinese hardstone and porcelain beads and cord tassels  
Comprising a pair of jade beads, two pairs of hardstone beads, a single hardstone bead, a pair of porcelain beads and five decorative tassels. (14)  
the largest bead 1 3/4 x 1 1/4in (4.5 x 3cm)

---



### 199: Capodimonte porcelain armorial cabinet plates

USD 600 - 800

A set of seven Capodimonte porcelain armorial cabinet plates  
late 19th/early 20th century  
Underglaze blue crowned N mark.  
diameter 10 1/4in (26cm)

---

## DTLA Collections and Estates Auction



### 200: Four Chinese hardstone objects,

USD 200 - 300

Four Chinese hardstone objects

20th century

Comprising a rose quartz seal, a rock crystal seal and two jade snuff spoons.  
the rose quartz seal height 2 1/2in (6.5cm)



### 201: A Neoclassical style occasional table

USD 200 - 300

A Continental Neoclassical style gilt bronze mounted occasional table

20th century

height 30in (76cm); diameter 20in (51cm)



### 202: Napoleon III gilt bronze & ebonized side cupboard

USD 600 - 800

A Napoleon III gilt bronze mounted and cut brass inlaid ebonized side cupboard

third quarter 19th century

height 40 3/4in (103.5cm); width 44 1/4in (112.5cm); depth 17 1/4in (44cm)



### 203: Herend porcelain Chinese Bouquet Green articles

USD 500 - 700

A collection of Herend porcelain articles in the Chinese Bouquet Green pattern

20th century

Comprising teapot, height 6 3/4in (1613), smaller teapot (1615), cream jug (1644), open sugar (1663), six demitasse cups and saucers (1709), teacup (704), small rectangular tray (722), covered cream soup and stand (744), circular covered box (6185), openwork basket (7376), three vases, height of tallest 5 3/4in, (7105 and 7025), three covered patty pans (749), small table bell, candy dish, one saucer (724) and one 7in plate (333) and ashtray; blue printed factory marks, pattern letters and shape numbers. (33)



### 204: A. Van Dusen, oil, Mother and Child

USD 300 - 400

A. Van Dusen (19th/20th century)

Mother and Child

oil on canvas

signed lower left

30 x 25in (76 x 64cm)



### 205: A Charles X gilt bronze mantel clock, circa 1825

USD 400 - 600

A Charles X gilt bronze mantel clock

circa 1825

The twin train movement striking on a bell.

height 14in (35.5cm); width 6in (15cm); depth 3 1/2in (9cm)

Image unavailable

### 206: A George III style carved mahogany dining table

USD 800 - 1,200

A George III style carved mahogany extension dining table

late 19th/early 20th century

With five leaves.

height 30in (76cm); width 60in (152.5cm); length extended 119 1/4in (303cm)

## DTLA Collections and Estates Auction



### 207: A Chinese metalware cigarette case

USD 100 - 200

A Chinese metalware cigarette case  
apparently unmarked  
20th century  
length 5in (13cm); width 3in (8cm); weight approximately 5.5oz troy

---



### 208: An Art Deco style thuya wood buffet

USD 200 - 300

An Art Deco style thuya wood buffet  
modern  
height 36 1/2in (93cm); width 72in (183cm); depth 17 3/4in (45cm)

---



### 209: A collection of gold and metal jewelry and watches

USD 1,200 - 1,800

A collection of gold and metal jewelry and watches  
Including an eighteen karat gold demi-hunter strap watch gold plated pocket watch and numerous pieces of jewelry ranging from ten to eighteen karat gold. (26) gross weights: 10 karat gold pieces: 14.5 dwt.; 18 karat gold pieces: 24.5 dwt.

---



### 210: Suite of Continental etched clear glass stemware

USD 400 - 600

A suite of Continental etched clear glass stemware  
20th century  
Comprising eight 6 1/4in red wine glasses, eight 5 3/8in glasses, five 4 5/8in glasses, one 5 3/8in liqueur and one 3 1/4in liqueur glass. (23)

---



### 211: A Federal mahogany inlaid side table

USD 400 - 600

A Federal mahogany inlaid side table  
circa 1800  
height 36 1/2 (93cm); width 39 1/2in (100.5cm); depth 19 3/4in (50.5cm)

---



### 212: American figured walnut child's chest of drawers

USD 250 - 350

An American figured walnut child's chest of drawers  
third quarter 19th century  
height 20 3/4in (52.5cm); width 17in (43cm); depth 13in (33cm)

---



### 213: A Neoclassical style composition & metal table

USD 400 - 600

A Neoclassical style composition, gilt and patinated metal occasional table  
modern  
height 25 3/4in (65.5cm); diameter 23 3/4in (60.5cm)

---



### 214: Herend porcelain Rothschild Bird pattern articles

USD 600 - 800

A collection of Herend porcelain articles in the Rothschild bird pattern  
20th century  
Comprising teapot, height 6 1/2in (1602); vase, height 7in (6433); four ashtrays (7784); patty pan and lid (737); open sugar (371); covered candy bowl (6080); covered egg form box (602); two cream jugs (1643 and 1644); salt and pepper shaker (250, 260); urn (8460) and oval bowl, width 8in (1212); blue printed factory marks, pattern letters and shape numbers. (16)

---

## DTLA Collections and Estates Auction



### 215: Eight Thai gilt & metalware devotional figures

USD 400 - 600

Eight Thai gilt copper alloy and metalware devotional figures  
17th-19th century  
Comprising six heads of Buddha and two figures of monks.  
the larger monk figure height 4 1.2in (11.5cm)

---



### 216: Keith Milow, oil, abstract composition

USD 300 - 500

Keith Milow (American, b. 1945)  
Abstract composition  
oil on board  
30 x 24in (76 x 61cm)

---



### 217: A Louis XV style carved giltwood bergere

USD 600 - 800

A Louis XV style carved giltwood bergere  
second half 19th century  
height 46 1/4in (117.5cm); width 30 1/2in (77.5cm); depth of seat 23in (58.5cm)

---



### 218: Four International silver tablewares

USD 100 - 150

Four International silver tablewares  
late 19th-early 20th century  
Comprising a Dutch oval box, a pair of German casters, Friedrich Reusswig, Hanau and an Eastern covered box with French import mark.  
the larger box height 4in (10cm); diameter 3 1/4in (8cm); total weight approximately 11oz troy

---



### 219: A Continental terracotta bust of a lady

USD 300 - 500

A Continental terracotta bust of a lady with a plumed hat  
20th century  
Together with a figural terracotta base. (2)  
height 21 1/4in (54cm); width 15in (38cm)

---



### 220: A Chinese carved hardwood armchair

USD 200 - 300

A Chinese carved hardwood armchair  
height 38 1/2in (98cm); width 24 1/2in (62cm); depth of seat 17 1/2in (44.5cm)

---



### 221: Five Margaret Davies Royal Doulton figures

USD 300 - 500

A group of five Royal Doulton porcelain figures  
designed by Margaret Davies  
Comprising Christmas Time (HN 2110); Cookie (HN 2218); Enchantment (HN 2178); Easter Day (HN 2039) and Lilac Time (HN 2137); each with green printed factory mark and title, printed or painted model numbers, height of tallest 7 1/2in (19cm)

---

## DTLA Collections and Estates Auction



### 222: Seven Chinese porcelain vases mounted as lamps

USD 400 - 600

A group of seven Chinese porcelain vases mounted as lamps  
20th century  
Comprising two pairs and three individual.  
the taller pair overall height 12 1/4in (31cm)

---



### 223: Pamela Simon, The Breaking Point, The Wall Series

USD 800 - 1,200

Pamela Simon (American, 20th century)  
The Breaking Point from The Wall Series (1987-1990)  
mixed media, acrylic on plaster  
diptych 7 1/2 x 11 1/2ft (2.25 x 3.5m)  
Provenance: with Ken Hansen, Inc., Los Angeles, CA.

---



### 224: A Gorham silver three piece coffee & tea service

USD 500 - 700

An American sterling silver three piece part coffee and tea service  
Gorham Mfg. Co., Providence, RI, 1917-1918  
Plymouth pattern, comprising a teapot, a coffee pot and a covered sugar bowl.  
the coffee pot height 9 3/4in (25cm); length over handle 11in (28cm); total weight approximately 57oz troy

---



### 225: Nine rustic farming implements, 19th century

USD 400 - 600

A group of nine rustic farming implements  
19th century  
Comprising a cart, three yokes, a plow, a saddle, sanding wheel, pitchfork and shovel.  
height of cart 26 1/2in (67.5cm); length 43 1/2in (110.5cm); depth 22 1/2in (57cm)

---



### 226: A pair of Chinese watercolor paintings on silk

USD 400 - 600

A pair of Chinese watercolor paintings on silk  
probably Republic Period  
Together with a later watercolor of pandas. (3)  
the pair overall height 17in (43cm); width 23 1/2in (59cm)

---



### 227: HJ Bonner, oil on canvas, riverscape & town view

USD 200 - 300

HJ Bonner (19th/20th century)  
A riverside view with a town to the distance  
oil on canvas, signed lower right  
18 x 24in (45.7 x 61cm)

---



### 228: A thirteen piece group of Chinese objects

USD 300 - 500

A thirteen piece group of Chinese objects  
20th century  
Comprising a set of eight ink sticks and five carved wood figures  
the largest figure on stand height overall 7in (18cm)

---



### 229: Two Contemporary tables

USD 100 - 200

Two contemporary tables  
Comprising a center table and a coffee table.  
height of center table 28in (71cm); width 28in (71cm); depth 28in (71cm)

---

## DTLA Collections and Estates Auction



### 230: An imposing pair of stone column form pedestals

USD 800 - 1,200

An imposing pair of stone column form pedestals  
20th century  
height 47 1/2in (120.5cm); diameter of top 14in (35.5cm)

---



### 231: A collection of charm bracelets and charms

USD 1,500 - 2,500

A collection of charm bracelets and charms  
Some with enamel and gem-set and comprised of nine karat to eighteen karat gold, one bracelet is eighteen karat gold with ten attached charms; the other is ten karat gold with five charms attached; together with approximately 22 loose charms and articles. (24)  
estimated total gross weight 67.7 dwt

---



### 232: Pair of Venetian Rococo style painted headboards

USD 100 - 200

A pair of Venetian Rococo style paint decorated headboards  
20th century  
height 52 1/2in (134cm); width 43in (109.5cm)

---



### 233: A Chinoiserie decorated serpentine side cupboard

USD 300 - 500

A Chinoiserie decorated serpentine side cupboard  
modern  
height 33in (84cm); width 60in (153cm); depth 19in (49cm)

---



### 234: A Chinese porcelain figure of seated Guanyin

USD 300 - 500

A Chinese porcelain figure of seated Guanyin  
modern  
height 9 1/4in (23.5cm)

---



### 235: Suite of Neoclassical style dining room furniture

USD 1,000 - 1,500

A suite of Neoclassical style mixed wood dining room furniture  
modern  
Comprising a three pillar dining table, twelve side chairs and a pair of armchairs.  
height of table 30in (76cm); length 180in (457cm); depth 48in (122cm); height of armchair 40in (102cm); width 24in (61cm); depth of seat 22in (56cm)

---



### 236: A Louis XVI style breakfront display cabinet

USD 1,000 - 1,500

A Louis XVI style parcel gilt and paint decorated carved mirror backed breakfront display cabinet  
circa 1900  
height 112in (284.5cm); width 54 1/4in (137.5cm); depth 17 1/2in (44.5cm)

---



## DTLA Collections and Estates Auction



### 237: Directoire style mahogany pedestal desk

USD 800 - 1,200

A Directoire style brass inlaid mahogany pedestal desk  
late 19th century  
Fitted with a writing slide to either side, top drawer adapted.  
height 31 1/2in (80cm); width 56 1/2in (143.5cm); depth 31 1/4in (79cm)

---



### 238: A Regency inlaid mahogany bow front chest

USD 500 - 700

A Regency inlaid and yew crossbanded mahogany bow front chest  
circa 1800  
height 38 1/2in (98cm); width 35 1/4in (89.5cm); depth 20in (50.5cm)

---



### 239: Federal style mahogany sideboard Potthast Brothers

USD 100 - 200

A Federal style inlaid mahogany sideboard  
Potthast Brothers, Baltimore, MD  
modern  
height 36 1/4in (93cm); width 58 1/4in (148cm); depth 21 1/2in (55cm)

---



### 240: A Contemporary wood and steel center table

USD 300 - 500

A Contemporary inlaid mixed wood and steel center table  
The top with indistinct signature.  
height 29in (73.5cm); diameter 48in (122cm)

---



### 241: Fifteen French metal mounted porcelain boxes

USD 200 - 300

A collection of fifteen French metal mounted porcelain boxes  
late 19th/20th century  
Together with an English enamel patch box. (16)  
largest box height 2in (5cm); width 5in (12.5cm); depth 3 1/2in (9cm)

---



### 242: Neoclassical style gilt wreaths & wall lights

USD 300 - 500

A pair of Continental Neoclassical style gilt iron laurel wreaths  
20th century  
Together with a pair of Louis XVI gilt bronze single branch wall lights. (4)  
the wreaths height 12 1/2in (32cm); width 12in (30cm)

---



### 243: Phil Dike, Variations Sun and Birds, lithograph

USD 200 - 300

Phil Dike (American, 1906-1990)  
Variations Sun and Birds  
lithograph, signed and dated '75, numbered 67/70.  
sight dimensions 24 1/2 x 17in (62.3 x 43.2cm)

---



### 244: Herend Chinese Bouquet Pink porcelain articles

USD 400 - 600

A collection of Herend porcelain articles in the Chinese Bouquet Pink pattern and Chinese Bouquet Rust pattern  
20th century  
Comprising in the pink pattern, covered teapot, height 7 1/2in; two tea cups; cream jug; circular tray, width across handles 12 3/4in; small candy dish and cigarette holder; in the Rust pattern, three miniature covered tureens, pin tray and a small vase; each with blue printed factory mark, some with pattern letters and shape numbers. (12)

---

## DTLA Collections and Estates Auction



### 245: French Provincial carved oak buffet a deux corps

USD 500 - 700

A French Provincial carved oak buffet a deux corps  
second half 18th century  
height 99in (252cm); width 75in (190cm); depth 23in (59cm)

---



### 246: Louis XV style gilt bronze candelabra & candlestick

USD 500 - 700

A pair of Louis XV style gilt bronze three light candelabra  
late 18th/early 20th century  
Together with a Louis XV style gilt bronze figural candlestick. (3)  
the candelabra height 11 3/4in (30cm); width 9in (23cm)

---



### 247: A George III style mahogany kneehole desk

USD 200 - 300

A George III style mahogany kneehole desk  
modern  
together with a modern swivel armchair  
height 31in (79cm); width 48in (122cm); depth 26in (66cm)

---



### 248: A collection of gold cuff links and tie pins

USD 400 - 600

A collection of gold cuff links and tie pins  
Including one pair of eighteen karat gold cuff links set with turquoise; one pair eighteen karat gold cuff links as Chinese characters;  
another pair of carved nephrite with cultured pearl centers and fourteen karat gold; together with four gold ties pins. (10)  
estimated gross weight (without nephrite) 18.8 dwt

---



### 249: English blue & white transfer decorated articles

USD 1,000 - 2,000

A group of English blue and white transfer decorated articles  
19th century  
Comprising eight platters and eleven plates. (19)  
diameter of plates 9 1/4in (23.5cm); dimensions of largest platter 17 1/2 x 14 1/4in (44.5 x 36cm)

---



### 250: Five Chinese cloisonne enamel objects

USD 300 - 500

Five Chinese cloisonne enamel objects  
20th century  
Comprising a pair of cups, a pair of vases and a censer.  
The censer height 6 3/4in (17cm); width 5 1/4in (13cm)

---



### 251: Italian Rococo style painted secretary bookcase

USD 700 - 900

An Italian Rococo style paint decorated secretary bookcase  
20th century  
The hinged fall enclosing a fitted interior.  
height 86 1/2in (220cm); width 51 1/4in (130cm); depth 22 1/2in (57cm)

---



### 252: A Directoire style mahogany bedside cupboard

USD 200 - 300

A Directoire style brass mounted mahogany bedside cupboard  
late 19th century  
Inset with a marble top.  
height 35 1/2in; width 15 3/4in (40cm); depth 14 1/4in (36cm)

---

## DTLA Collections and Estates Auction



### 253: A Louis XV style walnut and needlepoint armchair

USD 600 - 800

A Louis XV style walnut and needlepoint upholstered armchair  
circa 1900  
height 45in (115cm); width 29 1/2in (75cm); depth of seat 23in (58.5cm)

---



### 254: A Brunswick mixed wood pool / billiards table

USD 1,000 - 1,500

A Brunswick mixed wood pool / billiards table  
post 1950  
Together with eight pool cues and hanging cue rack.  
height 31 3/4in (81cm); length 113in (287cm); depth 64in (162.5cm)

---



### 255: A pair of Louis XV style mixed wood armchairs

USD 600 - 800

An imposing pair of Louis XV style mixed wood armchairs  
modern  
height 41in (104cm); width 31in (79cm); depth of seat 26in (66cm)

---



### 256: Four pieces of Chinese Export porcelain

USD 500 - 700

Four pieces of Chinese Export porcelain  
20th century  
Comprising a bowl with coat of arms and motto, shallow bowl and a pair of dishes.  
The larger bowl height 3 1/2in (9cm); diameter 9in (23cm)

---



### 257: Three Lalique frosted glass scent bottles

USD 200 - 300

Three Lalique frosted and clear glass scent bottles: Les Anemones, Clairefontaine and Dahlia  
20th century  
Two etched Lalique France, one etched Lalique®France.  
heights ranging from 4 3/4 to 6 1/2in (12 to 16.5cm)

---



### 258: Two Louis XV style beechwood bergeres

USD 600 - 800

Two Louis XV style carved beechwood needlework upholstered bergeres  
late 19th century  
The upholstery with coat-of-arms surmounted by a coronet and with motto: Licet Ex Multo Parvum.  
height of tallest 40 1/2in (103cm); width 28 3/4in (73cm); depth of seat 21 1/4in (54cm)

---



### 259: Barchi, three works, Mountainous Landscapes

USD 200 - 300

Barchi (Italian, 20th century)  
Three works: Mountainous Landscapes, two with houses  
oil on masonite, each signed lower right  
the largest 28 1/2 x 19 1/2in (72 x 49.4cm)

---



### 260: A Gien glazed earthenware mantel clock and urn

USD 600 - 800

A Gien glazed earthenware mantel clock and a Gien glazed earthenware urn  
late 19th/early 20th century  
Each with painted factory mark.  
heights 10 5/8 and 11 1/2in (27 and 29.3cm)

---

## DTLA Collections and Estates Auction



### 261: A group of four decorative prints

USD 30 - 50

A group of four decorative prints  
All framed and glazed.  
dimensions including frames 24 x 19in (61 x 48cm)

---



### 262: Twenty seven hardstone and lapidary carvings

USD 400 - 600

An assembled group of twenty seven Asian and Continental hardstone and lapidary carvings  
20th century  
Comprising mainly quartz, amethyst, chalcedony, fluorite, calcite and agate minerals formed as figures including frogs, turtles, horses, birds, fruit, Buddha and two shallow dishes, a disk and a page turner.  
the larger Buddha height 2 3/4in (7cm); width 2 1/2in (6cm)

---



### 263: Three French faience articles

USD 400 - 600

Three French faience articles  
20th century  
Comprising a vase, cache pot and two square form plates, the first two with VP monogram mark, the plates with Lille mark.  
height of vase 12 1/2in (31.5cm); width of plates 8 1/4in (21cm)

---



### 264: Two painted panels of medieval battle scenes

USD 500 - 700

Two polychrome paint decorated carved wood panels depicting medieval battle scenes  
19th century  
dimensions of largest 8 1/2 x 27 1/2in (21.5 x 70cm)

---



### 265: A pair of Chinese carved hardstone trees

USD 400 - 600

A pair of Chinese carved hardstone trees  
height 20 1/2in (52cm)

---



### 266: An group of English silver flatware

USD 400 - 600

An assembled group of English silver flatware  
various makers, 19th-20th century  
Comprising a pair of Onslow pattern sauce ladles by Charles Stuart Harris, 1899, a double marrow scoop by Francis Higgins III, 1908, a set of twelve fish knives by Harrison Brothers & Howson, 1913, a pair of Georgian sugar tongs (damaged); together with a twelve piece silverplate fish service for six. (28) total silver weight approximately 23oz troy

---



### 267: A Charles Frodsham brass carriage timepiece

USD 150 - 250

A brass carriage timepiece  
Charles Frodsham, Devon Clocks, London  
fourth quarter 20th century  
height 6in (15.5cm); width 3 1/4in (8cm)

---

## DTLA Collections and Estates Auction



### 268: Victorian hardwood and needlework tilt top table

USD 200 - 300

A Victorian carved exotic hardwood and needlework tilt top occasional table  
second half 19th century  
height 30 3/4in (78cm); diameter 24 1/4in (61.5cm)

---



### 269: A Garton 'Kidillac' child's pedal car

USD 100 - 200

A Garton 'Kidillac' child's pedal car  
Post 1950  
length 44in (112cm)

---



### 270: A Louis XV style carved walnut bed

USD 800 - 1,200

A Louis XV style carved walnut bed  
late 19th century  
height 71in (180.5cm); width 67 1/2in (171.5cm); length 82in (208.5cm)

---



### 271: Morris Broaderson, composition with flowers

USD 300 - 500

Morris Broaderson (American, 1928-2011)  
Composition with flowers and hand watercolor signed and dated '70 lower right  
10 x 13in (25 x 33cm)

---



### 272: A pair of Hollywood Regency ebonized armchairs

USD 300 - 500

A pair of Hollywood Regency parcel gilt ebonized armchairs  
20th century  
height 37in (94cm); width 23 3/4in (60.5cm); depth of seat 20 1/2in (52cm)

---



### 273: An eight piece group of Japanese porcelain

USD 300 - 500

An eight piece group of Japanese porcelain  
Meiji Period and later  
Comprising a bowl and five matching saucers, a Kakiemon bowl and a Satsuma bowl.  
the bowl with matching saucers height 2in (5cm); diameter 6in (15cm)

---

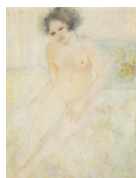


### 274: Two Chinese bird cage form hanging lanterns

USD 300 - 500

Two Chinese bird cage form hanging lanterns  
20th century  
height 39in (99cm); diameter 19 1/2in (49.5cm)

---



### 275: Mendez, oil, portrait of a nude woman

USD 100 - 150

Mendez (20th century)  
Portrait of a nude woman  
oil on canvas  
signed  
48 x 36in (122 x 91.5cm)

---

## DTLA Collections and Estates Auction



**276: An Art Deco style faux calamander center table**

USD 400 - 600

An Art Deco style faux calamander center table  
modern  
height 32 1/4in (82cm); width 67in (170cm); depth 36 3/4in (93.5cm)

---



**277: A gilt bronze mounted carved giltwood mirror**

USD 800 - 1,200

A gilt bronze mounted carved giltwood mirror  
20th century  
height 80in (203cm); width 35 1/2in (90cm)

---



**278: Colored diamond, diamond and 14K white gold ring**

USD 400 - 600

A colored diamond, diamond and fourteen karat white gold ring  
Centering one marquise shape light yellow diamond (diamond not tested for origin of color), estimate to weight: 0.50 carat and accented by round brilliant-cut diamonds, finger size 6 1/2. estimated total remainder weight: 0.35 carat.

---



**279: A Neoclassical style Karelian birch side table**

USD 200 - 300

A Neoclassical style Karelian birch side table  
20th century  
height 29 1/4in (74.5cm); width 29in (74cm); depth 19 1/2in (49.5cm)

---



**280: A Baroque style carved mixed wood library table**

USD 300 - 500

A Continental Baroque style carved mixed wood library table  
20th century  
height 30in (76cm); width 64in (162.5cm); depth 23 3/4in (60.5cm)

---



**281: Hammered iron & mica three light ceiling fixture**

USD 600 - 800

A hammered iron and mica three light ceiling fixture  
post 1950  
height 39 1/2in (100cm); width 60in (153cm); depth 16in (40.5cm)

---



**282: An Asian watercolor painting of a tiger**

USD 400 - 600

An Asian watercolor painting of a prowling tiger amidst bamboo  
modern  
signed lower right  
sight size 51in x 17in (130 x 43cm)

---



**283: Suite of Murano enamel decorated green glassware**

USD 400 - 600

A suite of Murano enamel decorated green glassware  
Comprising nine 5in Collins glasses, sixteen 3 1/2in double old fashioned, fourteen 3 1/8in old fashioned, eleven 2 5/8in glasses and one 5in chimney glass, some with factory stickers for NM Made in Italy Murano. (51)

---



## DTLA Collections and Estates Auction



### 284: Ancient pottery, glass vessels & wood molds

USD 800 - 1,200

An assembled group of pottery and glass vessels and wood molds  
Ancient and later  
Including bowls, dishes, jugs, food and storage vessels, an oil lamp, three Eucharistic bread molds and other items (32)  
the largest height 11in (28cm)

---



### 285: Two brass mounted English lap desks

USD 100 - 150

Two brass mounted English lap desks  
19th century  
One walnut and one mahogany.  
the larger height 6in (15cm); width 16in (40.5cm); depth 9 3/4in (25cm)

---



### 286: Eight Lladro porcelain animals and birds

USD 200 - 300

Eight Lladro porcelain animals and birds  
Comprising elephant mother and calf, group of two birds, three geese, group of goose and ducklings, group of three polar bears and bird perched on a branch, each with blue printed factory mark.  
heights ranging from 2 to 7 1/2in (5 to 19cm)

---



### 287: A Baroque oak farmhouse table, late 17th century

USD 800 - 1,200

A Continental Baroque oak farmhouse table  
late 17th century  
height 32in (81.5cm); width 60 3/4in (155cm); depth 32 1/2in (82.5cm)

---



### 288: Gustave Bolin, two abstract bronze figures

USD 500 - 700

Gustave Bolin (Swedish, 1929-1999)  
Two abstract figures  
bronze, mounted on black marble bases  
the larger height 13 3/4in (35cm); length 10 1/4in (26cm)

---



### 289: A group of three bisque headed dolls

USD 100 - 200

A group of three bisque headed dolls  
One Heubach and Kopplesdorf with kid body and bisque arms, 14in (35.5 cm), one a young boy, marked Germany JDK, 17in (44cm) and a modern doll 25in (63.5cm)

---



### 290: An English oak secretary bookcase

USD 150 - 250

An English oak secretary bookcase  
20th century  
The hinged fall enclosing a fitted interior of pigeon holes and small drawers.  
height 81in (206cm); width 35 1/2in (90cm); depth 18 3/4in (47.5cm)

---



### 291: Three Meissen porcelain figures

USD 600 - 800

Three Meissen porcelain figures  
late 19th/early 20th century  
Each with blue crossed swords, comprising a putto making hot chocolate, incised C97; putto holding a box, incised 778 and putto blindfolded, incised 12.  
heights from 3 1/4 to 4 1/2in (8 to 11.5cm)

---



## DTLA Collections and Estates Auction



### 292: Three English objects, 19th century

USD 200 - 400

Three English objects  
19th century

Comprising a burr yew wood tea caddy, a burr walnut lap desk, monogram: EB and a painted wax bust of a gentleman, in a shadow box frame  
height of tea caddy 6 1/4in (16cm); length of lap desk 14in (36cm)

---



### 293: A pair of Chinese hardwood low occasional tables

USD 300 - 500

A pair of Chinese carved hardwood low occasional tables  
height 16in (40.5cm); width 60in (152.5cm); depth 20in (51cm)

---



### 294: Six Thai gilt copper alloy devotional objects

USD 500 - 700

Six Thai gilt copper alloy devotional objects  
16th century and later

Comprising a seated figure of Buddha and five hands of Buddha in various positions.  
the seated Buddha height 11 1/4in (28.5cm)

---



### 295: A French Provincial figured walnut buffet

USD 700 - 900

A French Provincial figured walnut buffet  
late 18th century

Surmounted by a marble top.  
height 42in (106.5cm); width 59 1/2in (151cm); depth 26 3/4in (68cm)

---



### 296: Pair of silverplate & glass polar bear ice pails

USD 300 - 500

A pair of silverplate and frosted glass polar bear covered ice buckets  
modern  
height 6 1/2in (16.5cm); width 6in (15.25cm)

---



### 297: Pair Rococo style parcel gilt wood display cases

USD 800 - 1,200

A pair of Rococo style parcel gilt carved mixed wood display cases  
20th century  
height 41in (104cm); width 54in (137cm); depth 34in (86.5cm)

---



### 298: Collection of bakelite gaming sets & accessories

USD 200 - 300

A collection of bakelite and catalin gaming sets, boxes and accessories  
circa 1940

Including gaming chip sets, napkin ring sets, a set of six knives, and four table boxes, 15 (groups, sets or boxes) two chip sets possibly another type of plastic.  
the largest chip set height 5 1/4in (13.25cm); length 7in (17.75cm)

---



### 299: Fifteen pieces of Japanese porcelain & lacquerware

USD 300 - 500

A fifteen piece group of Japanese porcelain and lacquerware  
20th century

Comprising two boxes, seven various bowls, a platter, a tea caddy, a basket and three vases.  
the larger vase height 8 3/4in (22cm); length of platter 14in (35.5cm)

---

## DTLA Collections and Estates Auction



**300: A George V sterling silver square footed salver**

USD 500 - 700

A George V sterling silver square footed salver  
Barker Brothers, Chester, 1912  
height 1 1/4in (3cm); 12 1/4in (31cm) square; weight approximately 35oz troy

---



**301: A Chinese gilt & scarlet painted four fold screen**

USD 500 - 700

A Chinese gilt heightened scarlet painted four fold screen  
20th century  
each panel 76 x 21 1/2in (193 x 54.5cm)

---



**302: A pair of Japanese framed silk Obi fragments**

USD 300 - 500

A pair of Japanese framed embroidered silk Obi fragments  
20th century  
overall height 51 1/2in (131.5cm); width 19in (48cm)

---



**303: A pair of Chinese 'Sang de Boeuf' baluster vases**

USD 400 - 600

A pair of Chinese 'Sang de Boeuf' baluster vases  
20th century  
height 25in (63.5cm); diameter 14 1/2in (37cm)

---



**304: A Towle King Richard silver flatware service**

USD 600 - 800

An American sterling silver flatware service for eight  
Towle Silversmiths, Newburyport, MA., 20th century  
King Richard pattern comprising 8 dinner forks, 8 dinner knives, 8 salad/dessert forks, 8 oval bowl soup/dessert spoons, 8 butter spreaders, 8 teaspoons and 1 berry spoon, total weighable silver approximately 61oz troy. (49) together with a canteen height 3 1/4in (8cm); width 14 3/4in (37.5cm); depth 10 3/4in (27.5cm)

---



**305: A Continental parquetry octagonal breakfast table**

USD 500 - 700

An Italian parquetry inlaid occasional table  
19th century  
height 24 3/4in (63cm); width 26in (66cm); depth 25 3/4in (65.5cm)

---



**306: Four Louis XV style caned beechwood fauteuils**

USD 300 - 500

A set of four Louis XV style carved beechwood and cane paneled fauteuils  
20th century  
height 39 3/4in (101cm); width 23 3/4in (60.5cm); depth of seat 19in (48.5cm)

---

## DTLA Collections and Estates Auction



### 307: A Neoclassical style carved wood center table

USD 250 - 350

A Neoclassical style carved mixed wood center table  
modern  
height 30in (76cm); diameter 39 3/4in (101cm)

---



### 308: Five Chinese giltwood & glazed porcelain objects

USD 300 - 500

A group of five Chinese giltwood and blue glazed porcelain decorations  
20th century  
Comprising a pair of carved pierced medallions and three temple dogs.  
diameter of carvings 13 1/2in (35cm)

---



### 309: Two Mbuti beaten bark hand painted panels, Congo

USD 80 - 120

Two beaten bark hand painted panels by the Mbuti people  
Democratic Republic of Congo  
largest approximately 36 x 17in (91.5 x 43cm)

---



### 310: A Meissen Blue Onion porcelain part tea service

USD 600 - 800

A C. Teichert of Meissen porcelain part tea service in the Blue Onion pattern  
late 19th century  
Comprising eleven tea cups and saucers, teapot, pitcher and covered sugar, underglaze blue MEISSEN in an oval above a star mark. (24)  
height of teapot 6in (15.3cm); height of pitcher 6 1/2in (16.5cm)

---



### 311: Arts and Crafts style metal and glass chandelier

USD 200 - 300

An Arts and Crafts style verdigris metal and slag glass chandelier  
20th century  
height approximately 15 1/2in (39.5cm); width approximately 20 1/2in (52cm); depth 20 1/2in (52cm)

---



### 312: Two Asian watercolor paintings of birds

USD 150 - 250

Two Asian watercolor paintings of birds  
One depicting a goose, the other a crane.  
the larger overall 45 x 27 1/2in (114 x 70cm)

---



### 313: Two Herend boxes and a Moorcroft ginger jar

USD 100 - 200

Two Herend porcelain egg form covered boxes and a Moorcroft glazed earthenware ginger jar  
height of ginger jar 10 1/2in (26.5cm)

---



### 314: Bruce Killen, bronze, Eagle head

USD 250 - 350

Bruce Killen (American, 20th century)  
Eagle head  
patinated bronze, on walnut base, incised Killen and numbered 48/350  
height overall 7 1/4in (18.5cm)

---

## DTLA Collections and Estates Auction



**315: A set of four Regence style giltwood side chairs**

USD 800 - 1,200

A set of four Regence style giltwood side chairs  
late 19th century  
height 40in (102cm); width 21 1/2in (55cm); depth of seat 18in (46cm)

---



**316: A Victorian fully upholstered pink tufted sofa**

USD 400 - 600

A Victorian fully upholstered pink tufted sofa  
late 19th century  
height 36in (91.5cm); width 80in (204cm); depth of seat 23in (58.5cm)

---



**317: Tiffany & Co. silver shell form menu card holders**

USD 300 - 500

A set of sixteen American sterling silver shell form menu card holders  
Tiffany & Co., New York, NY  
modern  
each height 1in (2.5cm); total weight approximately 5oz troy

---



**318: Three pieces of Chinese furniture**

USD 200 - 300

An assembled three piece group of Chinese furniture  
modern  
Comprising a side cabinet, a low table and a hanging vitrine cabinet  
height of cabinet 32 1/2in (83cm); width 30in (76cm); depth 19in (48.5cm)

---

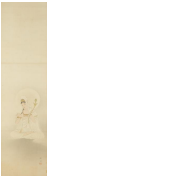


**319: Louis XVI style gilt bronze six light chandelier**

USD 400 - 600

A Louis XVI style gilt bronze six light chandelier  
20th century  
height approximately 21in (53.5cm); diameter approximately 25in (64cm)

---



**320: Three Japanese painted scrolls**

USD 100 - 200

Three Japanese painted scrolls  
mid-20th century  
overall height approximately 79 1/2in (202cm); width approximately 20in (51cm)

---



**321: A Thai painted wood and sequin beaded marionette**

USD 150 - 250

A Thai paint decorated carved wood and sequin beaded marionette  
20th century  
height approximately 54in (137cm)

---



**322: English School, oil, Portrait of Peter Ffoulkes**

USD 300 - 500

English School  
circa 1690  
Portrait of Peter Ffoulkes  
oil on canvas, labeled to reverse inscribed Peter Ffoulkes of ERIVIATT/DENBIGH/Bur. at Henllan, dated 1713  
29 3/4 x 25in (75.5 x 64cm)

---

## DTLA Collections and Estates Auction



### 323: Four Japanese objects

USD 300 - 500

Four Japanese objects  
20th century

Comprising a bronze usabata, an okimono of a mouse in a basket, signed and a wood netsuke, signed and a carved hardstone netsuke.  
the usabata height 9in (23cm); diameter 10 1/2in (27cm)

---



### 324: Arts and Crafts child's oak rush seat high chair

USD 150 - 250

An Arts and Crafts child's oak rush seat high chair  
early 20th century

height 36 1/2in (92.5cm); width 16 1/2in (42cm); depth of seat 12 1/2in (32cm)

---



### 325: Italian bronze abstract figures, E. Scarnicci

USD 300 - 500

Three Italian bronze abstract figures  
E. Scarnicci (Italian b. 1916)  
overall the tallest 14in (36cm)

---



### 326: A Hamadan rug

USD 200 - 300

A Hamadan rug  
dimensions approximately 6ft 7in x 4ft (201 x 122cm)

---



### 327: A Japanese black lacquer tray on later stand

USD 400 - 600

A Japanese black lacquer tray on later stand

Tray early 20th century, stand later  
height 19 1/2in (49.5cm); width 33 3/4in (86cm); depth 21 1/4in (54cm)

---



### 328: An Italian Rococo style giltwood console table

USD 1,200 - 1,500

An Italian Rococo style giltwood console table  
late 19th century

Surmounted by a marble top.  
height 40in (101.5cm); width 65 1/4in (165.5cm); depth 24 1/2in (62cm)

---



### 329: A sixteen piece group of Japanese porcelain

USD 300 - 500

A sixteen piece group of Japanese porcelain  
20th century

Kutani, Arita and others including a cased group of six sake cups, two additional sake cups, a small marbledware teapot, two pairs of shallow bowls, a dish and a bottle, height of bottle 6in (15cm)  
Provenance: By repute, the cased group of sake cups was found on Iwo Jima Island on Mt. Surabachi and owned by Lieutenant General Tadamachi Kuribayashi.

---

## DTLA Collections and Estates Auction



### 330: A Rococo style parcel gilt wrought iron console

USD 300 - 500

An imposing Rococo style parcel gilt wrought iron console  
20th century  
Surmounted by a travertine top.  
height 34 1/2in (87.5cm); width 86 3/4in (220.5cm); depth 23 3/4in (60.5cm)

---



### 331: Two Continental metal busts of Verdi on pedestals

USD 300 - 500

Two Continental patinated metal busts of Verdi on onyx and cloisonne enamel pedestals  
late 19th-early 20th century  
the larger height 12 1/4in (31cm)

---



### 332: Woodward Payne, oil, Napa Hills II

USD 200 - 400

Woodward Payne(American, b. 1935)  
Napa Hills II  
oil on canvas, signed lower right  
56 1/2 x 61in (143.5 x 155cm) Provenance: with Dubins Gallery, Los Angeles

---



### 333: Four Thai gilt metal figures of Buddha

USD 600 - 800

Four Thai gilt metal figures of Buddha  
20th century  
Two standing and two seated.  
the tallest height 15 1/4in (39cm)

---



### 334: A Continental satinwood bedside cupboard

USD 400 - 600

A Continental satinwood bedside cupboard  
19th century  
height 31in (79cm); width 18 1/2in (47cm); depth 16 1/2in (42cm)

---



### 335: A Kerman carpet

USD 700 - 900

A Kerman carpet  
dimensions approximately 9ft 5in x 6ft 3in (288 x 191cm)

---



### 336: A Continental 800 silver part coffee service

USD 300 - 500

A Continental 800 standard silver two piece part coffee service  
20th century  
Comprising a coffee pot and a covered sugar bowl.  
the coffee pot height 11 1/2in (29cm); length over handle 9 3/4in (25cm); total weight approximately 31oz troy

---



### 337: Two Victorian sterling silver flatware services

USD 400 - 600

Two Victorian sterling and mother of pearl flatware services  
Martin & Hall, Sheffield, 1865 and 1891  
Comprising a cased breakfast service for twelve and a fruit service for fourteen. the canteen height 2 1/2in (6cm); width 13 1/2in (34cm); depth 10in (25.5cm)

---

## DTLA Collections and Estates Auction



### 338: A six piece group of Chinese porcelain

USD 400 - 600

A six piece group of Chinese porcelain  
early 20th century and later  
Comprising a pair of bowls, two Song style bowls and a pair of vases  
the pair of bowls height 2 1/2in (6.5cm); diameter 6 1/2in (16.5cm)

---



### 339: Eight Venetian gilt glass champagne coupes

USD 100 - 150

A set of eight Venetian pink and gilt heightened clear glass champagne coupes  
20th century  
height 7in (17.8cm)

---



### 340: A French Provincial pine tall case clock

USD 500 - 700

A French Provincial pine tall case clock  
early 19th century  
The circular enamel dial with Roman numerals, inscribed Farjot fils a Ste Marguerite, the twin train movement striking on a bell.  
height 95in (241.5cm)

---



### 341: A George III mahogany bedside cupboard

USD 300 - 500

A George III mahogany bedside cupboard  
second half 18th century  
height 31 1/4in (79cm); width 19 1/2in (49.5cm); depth 17in (43cm)

---



### 342: A sixteen piece group of Japanese porcelain

USD 400 - 600

A sixteen piece group of Japanese porcelain  
20th century  
Kutani and others, including a bottle, bowls, dishes, a cup, a candlestick and vases.  
the larger vase height 8 1/4in (21cm)

---



### 343: An Indian carpet

USD 300 - 500

An Indian carpet  
dimensions approximately 12ft 10in x 9ft 1in (390 x 277cm)

---



### 344: A Continental earthenware stove & Italian tureen

USD 300 - 500

A Continental glazed earthenware stove  
Together with an Italian gourd form tureen and stand. (2)  
the stove height 17 1/4in (44cm); width 14 1/2in (37cm); depth 14 3/4in (37.5cm)

---



### 345: A collection of Hollywood film star trade cards

USD 100 - 200

A collection of thirty nine vintage Hollywood film star cigarette trade cards  
matted and framed, together with a framed Steamboat Willie serigraph. (7)  
frame size 16 3/4 x 13 3/4in (42.5 x 35cm)

---



## DTLA Collections and Estates Auction



### 346: Louis XVI style bronze & marble candelabra lamp

USD 600 - 800

A Louis XVI style gilt and patinated bronze and green serpentine marble two light candelabra lamp  
early 20th century  
overall height 22 1/2in (57cm); width 12 1/4in (31cm)

---



### 347: Herend porcelain Chinese Bouquet Rust articles

USD 400 - 600

A group of four Herend porcelain articles in the Chinese Bouquet Rust pattern  
20th century  
Comprising teapot, height 8 1/2in (1612); creamer (642); covered sugar (1663) and one crescent shaped salad plate (1530); blue printed factory marks, pattern letters and shape numbers.

---



### 348: A twelve piece group of Asian carved hardstone

USD 300 - 500

A twelve piece group of Asian carved hardstone objects  
20th century  
Depicting various deities and boys, carved from various stones.  
the largest height 3in (7.75cm); length 4 3/4in (12cm)

---



### 349: An embroidered woolwork panel: H.M.T. Titanic

USD 150 - 250

An embroidered woolwork panel: H.M.T. Titanic  
Framed and glazed.  
image 23 1/4 x 28 3/4in (59 x 73cm)

---



### 350: Five Tiffany & Co brass desk timepieces

USD 600 - 800

A group of five brass desk timepieces  
retailed by Tiffany & Co., New York, NY.  
modern  
Comprising four carriage clocks and one in the form of a marine chronometer, height of carriage clocks 5 1/2in (14cm)

---



### 351: A Continental Renaissance style carved oak buffet

USD 500 - 700

A Continental Renaissance revival carved oak buffet  
late 19th century  
height 94in (239cm); width 49 1/2in (126cm); depth 23 1/2in (60cm)

---



### 352: A Redlich sterling silver and cut glass pitcher

USD 600 - 800

An American sterling silver mounted brilliant cut glass pitcher  
Redlich & Co., New York, NY  
early 20th century  
Monogram: FS., height 16in (40.5cm)

---



### 353: A Baroque style twelve light chandelier

USD 300 - 500

A Baroque style brass and glazed earthenware twelve light chandelier  
post 1950  
height approximately 22 1/2in (57cm); diameter approximately 31in (79cm)

---

## DTLA Collections and Estates Auction



### 354: Asian hardwood and painted glass standing lantern

USD 300 - 500

An Asian hardwood and reverse-painted glass standing lantern  
modern  
height 70 1/2in (179.5cm); diameter 21in (53cm)

---



### 355: George III style carved mahogany child's armchair

USD 500 - 700

A George III style carved mahogany child's armchair  
19th century  
height 27in (68.5cm); width 18 1/4in (46cm); depth of seat 13in (33cm)

---



### 356: Two pairs of French gilt bronze chenets

USD 300 - 500

Two pairs of French gilt bronze chenets  
late 19th century  
One pair Louis XV style, the other Louis XVI style. (4)  
the larger height 9 1/2in (24cm); width 11in (28cm)

---



### 357: A large Steiff standing leopard

USD 200 - 300

A large Steiff standing leopard  
Button and tag in left ear.  
length nose to tail 56in (143cm)

---



### 358: Two pairs of Bohemian gilt glass candlesticks

USD 300 - 500

Two pairs of Bohemian gilt heightened cobalt and clear glass candlesticks  
probably Moser  
late 19th century  
heights 8 1/4in (21cm)

---



### 359: A cultured pearl bracelet with a 14K gold clasp

USD 500 - 700

A cultured pearl bracelet with a fourteen karat gold clasp  
Comprised of two rows of 6.5-6.75mm cultured pearls with gold spacers and pearl set clasp.  
length 7in (17.75cm)

---



### 360: Two Gnathia black glazed bottled vases

USD 500 - 800

Two Gnathia black glazed bottled vases  
South Italy  
circa 4th century BCE  
the larger height 7in (18cm)

---



### 361: Hollywood Regency mahogany etagere Barbara Barry

USD 400 - 600

A Hollywood Regency mahogany etagere  
Barbara Barry for Baker  
modern  
together with a pair of Baker armchairs (3)  
height 30 1/4in (77cm); width 48 1/2in (123cm); depth 16 1/2in (42cm)

---

## DTLA Collections and Estates Auction



### 362: Spanish Baroque style oak & walnut library table

USD 300 - 500

A Spanish Baroque style oak and walnut library table  
20th century  
height 30 1/2in (77.5cm); width 51 1/4in (130cm); depth 33 1/4in (85cm)

---



### 363: Two Tang glazed pottery figures of attendants

USD 300 - 500

Two Chinese glazed pottery figures of attendants  
Tang Dynasty  
height 9 3/4in (25cm)

---



### 364: Two Etruscan terracotta votive feet

USD 500 - 800

Two Etruscan terracotta votive feet  
circa 3rd-2nd century BCE  
approximate height 6 1/2in (16.5cm); length 8 1/2in (21.5cm); depth 4in (10cm)

---



### 365: A Neoclassical style bronze and glass chandelier

USD 700 - 1,000

A Neoclassical style gilt bronze and cut glass ten light chandelier  
20th century  
height approximately 30in (76cm); diameter approximately 26in (66cm)

---



### 366: A pair of French three tier occasional tables

USD 200 - 300

A pair of French gilt metal mounted parcel ebonized walnut and marquetry three tier occasional tables  
20th century  
height 31in (79cm); width 17 1/2in (44cm); depth 13in (33cm)

---



### 367: Pair of George III sterling silver footed waiters

USD 500 - 700

A pair of George III sterling silver footed waiters  
John Crouch I & Thomas Hannam, London, 1792  
Engraved with matching heraldic crests.  
height 1 1/4in (3cm); diameter 8in (20cm); total weight approximately 24oz troy

---

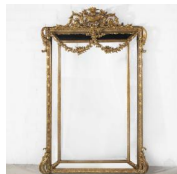


### 368: A Regency mahogany tilt top breakfast table

USD 700 - 1,000

A Regency parcel gilt mahogany tilt top breakfast table  
early 19th century  
height 30in (76cm); diameter 50in (128cm)

---



### 369: A Regence style giltwood and gilt plaster mirror

USD 400 - 600

A Regence style giltwood and gilt plaster mirror  
20th century  
height 66in (168cm); width 42in (107cm)

---

## DTLA Collections and Estates Auction



### 370: Cameo plaques of French kings and musical trophy

USD 300 - 500

Two gilt metal mounted cameo plaques of Louis XIII and Louis XIV  
20th century  
Together with a musical trophy plaque. (3)  
the trophy height 23 1/2in (60cm); width 13in (33cm)

---



### 371: A group of six Empire style & other wall lights

USD 500 - 700

A pair of Empire style gilt bronze twin branch wall lights  
20th century  
Together with a pair of cast brass three-light wall lights and a pair of polychrome-decorated metal twin-branch wall lights. (6)  
the larger height 9 1/2in (24cm); width 6 1/2in (16cm); depth 8in (20cm)

---



### 372: Three carved giltwood frames

USD 500 - 700

Three carved giltwood frames  
18th-20th century  
One with mirror plate the largest  
height 33in (84cm); width 26 1/2in (67cm)

---



### 373: A Louis XVI style tapestry panel

USD 50 - 100

A Louis XVI style tapestry panel  
20th century  
Framed.  
framed dimensions 23 x 21in (58.5 x 53.5cm)

---



### 374: A contemporary red painted model of a deer

USD 50 - 100

A contemporary red painted model of a deer  
height 48in (122cm)

---



### 375: An imposing pair of Biedermeier style side chairs

USD 100 - 200

An imposing pair of Biedermeier style side chairs  
post 1950  
height 42 3/4in (108.5cm); width 24 1/4in (61.5cm); depth of seat 20in (51cm)

---



### 376: A French Provincial carved oak armoire

USD 500 - 700

A French Provincial carved oak armoire  
second half 18th century  
height 88in (224cm); width 70in (178cm); depth 23 1/2in (60cm)

---



### 377: Assembled suite of ruby and clear glass articles

USD 300 - 500

An assembled suite of etched ruby flash and clear glass articles  
20th century  
Comprising two decanters (one lacking stopper), height of tallest 11 1/2in; one large tumbler, height 4 7/8in; two smaller tumblers and four sherry glasses. (9)

---

## DTLA Collections and Estates Auction



### 378: Collection of Ancient pottery, metalware & glass

USD 200 - 300

A collection of pottery, metalware and glass antiquities and reproductions  
Etruscan, Roman and others

Comprising 30 votive heads, a group of two seated figures, a bronze figure of a youth, a cup decorated with putti, a footed dish, a jug and diameter of dish 6 3/4in (17cm)

---



### 379: A Neoclassical style composition low pedestal

USD 100 - 150

A Neoclassical style composition fluted column form low pedestal  
modern  
height 28 3/4in (73cm); width 20in (51cm); depth 20in (51cm)

---



### 380: An African shell and straw mounted shield

USD 400 - 600

An African shell and straw mounted shield  
height 41in (104cm); width 24in (61cm)

---



### 381: A patinated bronze and glass dining table,

USD 700 - 900

A patinated bronze and glass dining table  
modern  
height 30 3/4in (78cm); diameter 60in (152.5cm)

---



### 382: A Chinese wood, shell and bone inlaid screen

USD 300 - 500

A Chinese relief decorated carved wood, shell and bone inlaid four fold floor screen  
20th century  
height 72 1/4in (183.5cm); width of each panel 16in (40.5cm)

---



### 383: A Louis XVI style giltwood bench & a stool

USD 600 - 800

A Louis XVI style carved giltwood bench and a caned panel stool  
modern  
height of giltwood bench 19in (48.5cm); width 42in (107cm); depth 19 1/2in (49.5cm)

---



### 384: A pair of Chinese framed ancestor portraits

USD 300 - 500

A pair of Chinese framed ancestor portraits  
20th century  
overall 47 x 25 1/4in (119.5 x 64cm)

---



### 385: A Continental Baroque style six light chandelier

USD 1,000 - 1,500

A Continental Baroque style patinated metal and giltwood six light chandelier  
20th century  
height approximately 43in (109cm); diameter approximately 38in (96.5cm)

---

## DTLA Collections and Estates Auction



### 386: Three Louis XVI style bouillotte lamps

USD 500 - 700

Three Louis XVI style gilt bronze and tole bouillotte lamps  
modern  
Variations.  
the largest height 26 3/4in (68cm); diameter 16 3/4in (42cm)

---



### 387: A Louis XV style carved mahogany armoire

USD 700 - 900

A Louis XV style carved mahogany armoire  
late 19th century  
height 108in (275cm); width 63in (160cm); depth 18in (46cm)

---



### 388: Eight patinated brass fireplace tools

USD 300 - 500

An assembled eight piece group of Continental patinated brass and steel fireplace equipment  
19th century  
Comprising a pair of andirons and three matching tools together with another set of three tools  
height of andirons 14 1/2in (37cm); length of longer shovel 29 1/4in (74cm)

---



### 389: Ten Herend Blue Garden porcelain pots-de-creme

USD 500 - 700

A set of ten Herend porcelain pots-de-creme on tray in the Blue Garden pattern  
20th century  
Together with a matching open salt and pin tray, each with blue printed factory mark, pattern letters and shape numbers.  
length of tray 16in (40.5cm)

---



### 390: A George V sterling silver desk clock

USD 400 - 600

A George V sterling silver desk clock  
the case W & G Neal, London, 1911  
the twin train movement striking on a gong.  
height 6 1/2in (16.5cm), width 4 3/4in (12cm); depth 3 1/2in (9cm)

---



### 391: A Continental Renaissance style carved walnut court cupboard

USD 400 - 600

A Continental Renaissance style carved walnut court cupboard  
20th century  
height 55 1/2in (141cm); width 54 1/2in (139cm); depth 29 1/2in (52cm)

---



### 392: Four Asian blue and white table decorations

USD 300 - 500

A group of four Asian blue and white table decorations  
Chinese & Japanese  
Comprising a pair of vases and a pair of ginger jars with associated covers  
height of vases 23in (58.5cm)

---



### 393: A black painted metal four light hall lantern

USD 700 - 900

A black painted metal four light hall lantern  
post 1950  
height approximately 40 1/2in (101.5cm); width approximately 25in (63.5cm); depth approximately 25in (63.5cm)

---

## DTLA Collections and Estates Auction



### 394: Nine Thai gilt & metalware devotional Buddhas

USD 500 - 700

Nine Thai gilt copper alloy and metalware devotional Buddha figures  
17th-19th century  
Comprising four heads and five figures and part figures; together with two amulets. (11)  
the largest head height 5in (13cm)

---



### 395: A Venetian Rococo style headboard

USD 400 - 600

A Venetian Rococo style parcel silvered, grey painted and upholstered headboard  
post 1950  
Queen size  
height 58in (147cm); width 68in (173cm)

---



### 396: Five Continental miniature portraits

USD 700 - 900

Five Continental miniature portraits  
19th-20th century  
Comprising a Renaissance woman after Pollaiuolo, a German porcelain plaque of a beauty after Asti, one possibly of Pauline Borghese, a Limoges enamel of a woman and a terracotta cameo of an 18th century gentleman, all framed.  
the largest overall height 8in (20cm); width 6 1/4in (16cm)

---



### 397: A group of five Japanese porcelain articles

USD 100 - 200

A group of five Japanese porcelain articles  
Comprising a square form plate and four chargers.  
largest diameter 16 3/4in (42.5cm)

---



### 398: A pair of Rococo style eight light chandeliers

USD 1,000 - 1,500

A pair of Rococo style green painted wrought metal and tole and rock crystal eight light chandeliers  
post 1950  
Slight variation in color.  
height approximately 44in (112cm); diameter approximately 34in (87cm)

---



### 399: A collection of early Chinese & Thai pottery

USD 600 - 800

A fifteen piece collection of early Chinese and Thai pottery  
200 BCE to 14th century  
Including a Han Dynasty figure of a boar, Tang and Ming Dynasty jarlettes, Thai animal figures and other vessels.  
the largest height 4 1/2in (11cm)

---



### 400: A Swedish Rococo style painted writing table

USD 400 - 600

A Swedish Rococo style paint decorated writing table  
modern  
height 30in (76cm); width 50 1/2in (128.5cm); depth 28in (71cm)

---



### 401: An Allan Adler Fiddle pattern salad set

USD 200 - 300

An American hand hammered sterling silver salad serving set  
Allan Adler  
20th century  
Fiddle pattern, a fork and a spoon. total weight approximately 8.5oz troy

---



## DTLA Collections and Estates Auction



### 402: Two Chinese blue & white porcelain covered vases

USD 400 - 600

Two Chinese blue and white porcelain covered vases  
heights 17 3/4 and 25in

---



### 403: A French Provincial style carved oak chest

USD 300 - 400

A French Provincial style carved oak chest  
circa 1900  
height 36 1/4in (92cm); width 26 1/2in (66cm); depth 16 1/4in (41cm)

---



### 404: A pair of stone column form low pedestals

USD 800 - 1,200

A pair of stone column form low pedestals  
20th century  
height 28 1/4in (72cm); diameter of top 20in (51cm)

---



### 405: Two Continental etched glass vessels

USD 200 - 300

A Continental etched clear and amber glass goblet and a Continental etched and cut glass vase  
late 19th/early 20th century  
height of first 10 3/4in (27.3cm); height of second 7 5/8in (19.5cm)

---



### 406: Three Empire style silvered & ebonized armchairs

USD 400 - 600

Three Empire style parcel silvered ebonized armchairs  
modern  
height 35 1/2in (90cm); width 23 1/2in (60cm); depth of seat 19 1/2in (49.5cm)

---



### 407: An Indo-Persian lacquered writing case & a Kukuri

USD 200 - 300

An Indo-Persian lacquered writing case and a Kukuri(2)  
the Kukuri and sheath length 20 1/2in (52cm)

---



### 408: A Victorian figured walnut Sutherland table

USD 200 - 300

A Victorian figured walnut Sutherland table  
second half 19th century  
height 27 1/2in (70cm); width 36 1/2in (93cm); depth open 40 1/2in (103cm)

---



### 409: A Continental Baroque style painted chandelier

USD 200 - 300

A Continental Baroque style polychrome decorated twelve light chandelier  
20th century  
height approximately 37 1/2in (95cm); diameter approximately 36in (91.5cm)

---

## DTLA Collections and Estates Auction



### 410: Five Laliq frosted glass articles

USD 400 - 600

Five Laliq frosted glass articles  
20th century

Comprising Gregoire frog paperweight, Compiègne leaf bowl, Rosine birds vase, Floreal kneeling figure and Faune figural group, each etched Laliq®France.  
heights ranging from 3 1/8 to 5 1/2in (8 to 14cm)

---



### 411: Buhong Ye, watercolor, Waterfall

USD 100 - 200

Buhong Ye (China/Los Angeles, late 20th century)  
Waterfall  
watercolor and ink on paper  
sight size 36 x 85in (91.5 x 216cm)

---



### 412: Russian silver and niello tea glass holders

USD 300 - 500

A set of seven Russian silver, silver gilt and niello tea glass holders  
20th century  
height 3 1/4in (8cm); length over handle 4in (10cm); total weight approximately 18oz troy

---



### 413: A pair of Chinese Export porcelain fish bowls

USD 300 - 500

A pair of Chinese Export porcelain fish bowls  
modern  
height 17 3/4in (45cm); diameter 19in (48cm)

---



### 414: A collection of Herend porcelain animals & birds

USD 600 - 800

A collection of Herend porcelain animals and birds  
20th century

Comprising rooster, two rabbits, group of two rabbits, group of two hares, two small hares, group of two ducks, blue printed factory marks. (8)  
heights ranging from 1 3/4 to 7 1/4in (4.5 to 18.5cm)

---



### 415: A Louis XVI style carved wood wall applique

USD 500 - 700

A Louis XVI style carved wood wall applique  
20th century  
height 18in (46cm); width 51in (130cm)

---



### 416: Three gentleman's desk articles

USD 400 - 600

Three gentleman's desk articles  
late 19th-20th century

Comprising an English humidor, mounted with the badge of the British Foreign Legion to one side and the Swedish Royal coat of arms to the other, a parcel ebonized fruitwood box and an inkwell.  
the humidor height 10 1/2in (27cm); diameter 6 1/2in (16.5cm)

---



### 417: An English inlaid mahogany tallcase clock

USD 700 - 900

An English parcel ebonized inlaid mahogany tallcase clock  
first half 19th century

The white painted arched dial inscribed Allen Sheffield, with rolling moon phase, having Roman hours and Arabic minutes, with subsidiary seconds and date dials, the twin train movement striking on a bell.  
height 88 3/4in (225.5cm)

---

## DTLA Collections and Estates Auction



**418: A pair of Victorian ebonized tub armchairs**

USD 400 - 600

A pair of Victorian fully upholstered and ebonized tub armchairs  
late 19th century  
height 38in (96.5cm); width 31 1/2in (80cm); depth of seat 21in (53.5cm)

---



**419: A Continental bronze figure of Venus de Medici**

USD 800 - 1,200

A Continental bronze figure of Venus de Medici  
probably German  
late 19th century  
height 14 3/4in (37.5cm)

---



**420: A pair of Continental porcelain models of parrots**

USD 400 - 600

A pair of Continental porcelain models of parrots  
20th century  
Blue crowned N mark.  
height 12 1/4in (31cm)

---



**421: A pair of Louis XVI style bouillotte lamps**

USD 300 - 500

A pair of Louis XVI style gilt bronze and tole bouillotte lamps  
modern  
One with a red shade and one with a black shade.  
height 23 1/2in (60cm); width 14in (36cm)

---



**422: A suite of Baccarat Buckingham glass tableware**

USD 300 - 500

A suite of Baccarat glass tableware in the Buckingham pattern  
Comprising ten 5 1/2in glasses, nine 5in glasses, one other 5in glass, six 4 5/8in glasses, each with etched factory mark. (26)

---



**423: Five Louis XVI style gilt bronze cassoulettes**

USD 1,000 - 1,500

Five Louis XVI style gilt bronze cassoulettes  
late 19th century  
Comprising two pairs, one with patinated bronze bases, and one similar.  
the largest height 11in (28cm)

---



**424: A pair of Barbara Barry for Baker armchairs**

USD 300 - 500

A pair of ebonized armchairs  
Barbara Barry for Baker  
modern  
height 37 1/2in (96cm); width 30in (76.5cm); depth of seat 23in (58.5cm)

---



**425: Four Japanese lacquer boxes**

USD 400 - 600

Four Japanese lacquer boxes  
early 20th century  
One circular, one square and two rectangular  
the largest 2 1/2in (6.5cm) square

---

## DTLA Collections and Estates Auction



### 426: Two Chinese hardstone figures of temple lions

USD 200 - 300

Two Chinese carved hardstone figures of temple lions  
Together with a pair of Japanese Satsuma cabinet vases. (4)  
height of lions 8in (20cm)

---



### 427: Five Continental gilt wall brackets

USD 600 - 800

A pair of Continental Baroque style giltwood figural brackets  
late 19th century  
Together a pair of Louis XIV style composition brackets and a single Louis XVI style bracket. (5)  
the figural pair height 13 1/2in (34cm); width 12in (30cm); depth 8in (20cm)

---



### 428: A pair of Korean glazed porcelain bowls

USD 100 - 200

A pair of Korean glazed porcelain bowls  
height 2 1/4in (6cm); diameter 3 1/2in (9cm)

---



### 429: Louis XV porcelain and steel cutlery, St Cloud

USD 100 - 200

A suite of Louis XV porcelain and steel cutlery  
probably St Cloud  
third quarter 18th century  
Comprising ten forks with two prongs and one three-pronged fork and three knives, contained in a period fitted box.  
length of knife 10 1/2in (26.5cm)

---



### 430: Omega Art Deco easel table clock

USD 1,200 - 1,800

An Omega Art Deco white metal easel back table clock  
circa 1930  
height 8in (20cm); width 8in (20cm)

---



### 431: An American Classical carved mahogany sofa

USD 400 - 600

An American Classical carved mahogany sofa  
first quarter 19th century  
height 33 3/4in (85.5cm); width 79 3/4in (202.5cm); depth of seat 18 1/4in (46.5cm)

---



### 432: A Chinese carved hardwood & brass gong and stand

USD 150 - 200

A Chinese carved hardwood and painted brass gong and stand  
height 50 1/2in (127.5cm); width 27in (68.5cm); depth 14in (35.5cm)

---



### 433: A group of six framed Japanese woodblock prints

USD 200 - 300

A group of six framed Japanese woodblock prints  
various artists  
the largest overall 20 1/4 x 37 1/4in (51 x 94.5cm)

---

## DTLA Collections and Estates Auction



### 434: Two Neoclassical style terracotta covered urns

USD 350 - 450

Two Neoclassical style glazed terracotta covered urns  
20th century  
heights 39 1/2in (100.5cm) and 47in (119.5cm)

---



### 435: A Baroque style oak and chestnut refectory table

USD 800 - 1,200

A Continental Baroque style oak and chestnut refectory table  
incorporating antique elements  
height 33in (84cm); length 110in (79); depth 29in (74cm)

---



### 436: A South German inlaid walnut table cabinet

USD 800 - 1,200

A South German inlaid walnut table cabinet  
second half 18th century  
Fitted with ten drawers about a central cupboard enclosing ten small drawers.  
height 43 1/2in (111cm); width 47in (120cm); depth 12 1/2in (32cm)

---



### 437: A Cartier silvered easel back travel clock

USD 800 - 1,200

A Cartier silvered easel back travel clock  
Paris  
circa 1915  
With seconds dial.  
height 4in (10cm); width 3 1/4in (8cm)

---



### 438: English School, oil, Portrait of Standard Poodle

USD 300 - 500

English School (19th century)  
Portrait of a Standard Poodle in a Landscape  
oil on panel  
unsigned 11 1/2 x 13 1/2in (29 x 34cm)

---



### 439: A pair of Louis XVI style gilt bronze candelabra

USD 400 - 600

A pair of Louis XVI style gilt bronze two light candelabra  
late 19th century  
height 13in (33cm); width 11in (28cm); depth 5in (13cm)

---



### 440: Three French faience miniature furniture pieces

USD 500 - 700

Three French faience articles in the form of miniature furniture  
20th century  
Comprising a ladies' writing desk and two bombe commodes; the desk with red painted fleur de lys mark, the large commode with an H mark and the smaller commode with VP monogram mark.  
height of desk 14 1/4in (36cm); width 10 1/4in (26cm); depth 6 1/2in (16.5cm)

---



### 441: American School, oil, Portrait of a Girl

USD 800 - 1,200

American School (19th century)  
Full length portrait of a young girl wearing a white dress  
oil on canvas  
45 1/4 x 32 1/4in (115 x 79cm)

---

## DTLA Collections and Estates Auction



### 442: A Mission chair, folding step chair & tray table

USD 100 - 150

A group of furniture  
Comprising a Mission style oak child's adjustable armchair, an oak folding step chair and a tray top table.  
height of folding step 34 1/2in (87.5cm); width 15 1/4in (38.5cm); depth 13 1/4in (33.5cm)

---

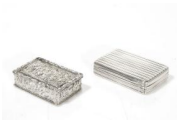


### 443: A George II style carved mahogany armchair

USD 250 - 350

A George II style carved mahogany armchair  
late 19th/early 20th century  
height 35 3/4in (91cm); width 26in (66cm); depth of seat 20 1/2in (52cm)

---



### 444: Chinese Export and English silver snuff box

USD 200 - 300

A Chinese Export and an English silver snuff box  
Yatshing, Canton and BS, no town mark  
19th century  
the larger length 3in (7.5cm); total weight approximately 6oz troy

---



### 445: A cocktail bar in the Chinese taste

USD 300 - 500

A carved mixed wood cocktail bar in the Chinese taste  
post 1950  
height 36in (91.5cm); width 34in (66.5cm); depth 18in (45.5cm)

---



### 446: Emile Gauguin, oil, Hut with Palms

USD 300 - 500

Emile Gauguin (French, 1899-1980)  
Hut with Palms  
oil on canvas  
signed verso, numbered 43 and with O Hara Gallery, London stamp  
19 1/2 x 24in (49.5 x 61cm)

---



### 447: A Chinese carved mixed wood side table

USD 400 - 600

A Chinese carved mixed wood side table  
incorporating antique elements  
Fitted with two drawers to the frieze.  
height 32 1/2in (82.5cm); width 87 1/2in (214.5cm); depth 21in (53.5cm)

---



### 448: A pair of contemporary composition red spheres

USD 400 - 600

A pair of contemporary composition red spheres on lucite bases  
height overall 15in (38cm); diameter 13in (33cm)

---



### 449: Porcelain and glass cabinet decorations

USD 250 - 350

A large collection of porcelain and glass cabinet decorations  
19th-20th century  
Comprising three miniature teaset, various scent bottles, porcelain and enamel boxes, a Lalique frosted green glass model of a frog and other items.  
largest box 2 1/2 x 2in (6.5 x 5cm)

---

## DTLA Collections and Estates Auction



### 450: A Chinese style marble inset console

USD 400 - 600

A marble inset painted demilune console in the Chinese taste modern  
height 31 3/4in (80.5cm); width 43in (109cm); depth 22in (56cm)

---



### 451: A sunflower pattern kilim rug

USD 200 - 300

A sunflower pattern kilim rug  
Approximately 9ft 10in x 6ft 5in (300 x 196cm)

---



### 452: Four 14K gold and gem-set jewelry pieces

USD 400 - 600

A collection of four fourteen karat gold and gem-set jewelry pieces  
Including a ring set with an oval cabochon jadeite and flanked by single-cut diamonds; a hammered texture ring set with one round brilliant-cut diamond estimated to weigh: 0.10 carat; a pair of clip-on earrings set with four round brilliant-cut diamond estimated total weight: 0.50 carat and one bird motif brooch set with an oval cabochon jadeite. (5)

---



### 453: Twenty pieces of Asian silver flatware

USD 250 - 350

Twenty pieces of Asian silver flatware  
various makers  
20th century  
Comprising a two piece salad serving set, twelve iced beverage spoons and six demitasse spoons. length of serving set 11 1/2in (29cm)

---



### 454: A George V sterling silver oval pedestal dish

USD 400 - 600

A George V sterling silver oval pedestal dish  
GBG Ltd., London, 1925  
Monogram: EE.  
height 4in (10cm); width 14 1/4in (36cm); depth 9 1/4in (23.5cm); weight approximately 32oz troy

---



### 455: Three upholstered tufted child's armchairs

USD 300 - 500

A group of three fully upholstered tufted child's armchairs  
post 1950  
height 26 1/2in (67cm); width 21 1/2in (55cm); depth of seats 15 1/2in (39.5cm)

---



### 456: Lladro porcelain figure of Noah by Salvador Furio

USD 300 - 400

A Lladro porcelain limited edition figure of Noah  
modeled by Salvador Furio, decorated by Angeles Cabo  
circa 1995  
Blue printed factory mark, impressed 1809, sculptor and decorator signatures, No. 71.  
height 21 1/4in (51.5cm)

---



## DTLA Collections and Estates Auction



**457: An Empire style occasional table, Baker**

USD 200 - 300

An Empire style inlaid mixed wood occasional table  
Baker  
modern  
height 28 3/4in (73cm); diameter 29 3/4in (76cm)

---



**458: A Najafabad carpet**

USD 400 - 600

A Najafabad carpet  
dimensions approximately 13ft x 9ft 10in (396 x 299cm)

---



**459: A Hermes Art Deco white metal easel back table clock**

USD 2,000 - 3,000

A Hermes Art Deco white metal easel back table clock  
movement marked for European Watch and Clock Co., Paris  
circa 1925  
height 7 1/4in (18.5cm); width 7 1/4in (18.5cm)

---



**460: A Caucasian runner**

USD 200 - 300

A Caucasian runner  
dimensions approximately 8ft x 2ft 6in (244 x 76cm)

---



**461: A Whitney Reed Chair Company painted horse glider**

USD 300 - 500

An American paint decorated carved wood rocking horse glider  
Whitney Reed Chair Company, Leominster, MA  
fourth quarter 19th century  
height 32 1/2in (82.5cm); width 46 1/4in (117.5cm); depth 15 3/4in (40cm)

---



**462: A Bessarabian kilim rug**

USD 300 - 500

A Bessarabian kilim rug  
together with another rug. (2)  
the Bessarabian approximately 9ft 6in x 6ft 8in (290 x 203cm)

---



**463: An Italian Baroque style walnut drop leaf table**

USD 400 - 600

An Italian Baroque style walnut drop leaf table  
incorporating antique and later elements  
height 32in (81cm); width 55 1/4in (141cm); depth closed 23 1/4in (59cm); depth open 49in (125cm)

---



**464: A cane paneled bentwood rocking chair**

USD 100 - 200

A cane paneled bentwood rocking chair  
20th century  
height 35 1/2in (90cm); width 19in (49cm); depth of seat 15in (38cm)

---

## DTLA Collections and Estates Auction



**465: Angel Miguel Tejera, oil, two works**

USD 200 - 300

Angel Miguel Tejera (Uruguayan, 1939-2008)  
Two works: Workmen and a Boy and Girl Gathering Vegetables  
oil on masonite  
each signed upper right, the larger 28 x 38 1/2in (71 x 98cm)

---



**466: Two Chinese snuff bottles**

USD 100 - 200

Two Chinese snuff bottles  
One carved octagonal jade, the other inside-painted glass.  
the larger height 3 1/4in (8cm)

---



**467: A group of three table lamps**

USD 100 - 150

A group of three table lamps  
modern  
One gilt metal, one wrought metal and one earthenware.  
height of tallest 39 1/2in (100cm)

---



**468: A Contemporary faux leather mixed wood side table**

USD 100 - 200

A Contemporary faux leather mixed wood side table  
modern  
Fitted with a single frieze drawer. height 36 1/4in (92cm); width 49 1/4in (125cm); depth 17 3/4in (45cm)

---



**469: Continental School, oil, Still Life with Basket**

USD 200 - 300

Continental School (18th century)  
Still Life with Basket of Flowers  
oil on canvas  
10 3/4 x 14 3/4in (27 1/2 x 38cm)

---



**470: A Louis XV style walnut center table**

USD 250 - 350

A Louis XV style walnut center table  
circa 1900  
Fitted with two frieze drawers.  
height 28 1/4in (72cm); width 46 1/2in (118cm); depth 31in (79cm)

---



**471: Italian School, oil, Fishermen in a Landscape**

USD 1,500 - 2,000

Italian School  
Figures fishing in a river landscape  
oil on arched canvas  
36 1/2x 52in (92.5x 132cm)

---



**472: An Omega chrome and black onyx display stand**

USD 700 - 900

An Omega chrome and black onyx display stand  
mid 20th century  
height 12 1/2in (32cm); width 18in (46cm)

---

## DTLA Collections and Estates Auction



### 473: A Neoclassical style carved giltwood table lamp

USD 200 - 300

A Neoclassical style carved giltwood table lamp  
modern  
height 48 1/2in (123cm)

---



### 474: A Neoclassical style painted low occasional table

USD 400 - 600

A Neoclassical style polychrome paint decorated carved low occasional table  
20th century  
Inset with a beveled glass top.  
height 17in (43cm); width 38 1/4in (97cm); depth 20 1/4in (51.5cm)

---



### 475: A pair of Continental terracotta busts

USD 500 - 700

A pair of Continental terracotta busts of a boy and a girl  
19th century  
Each on integral black glazed plinth.  
the larger overall height 15 1/2in (39cm); width 9in (23cm); depth 6in (15cm)

---



### 476: A suite of Baccarat Cote d'Azur glassware

USD 600 - 800

A suite of Baccarat glassware in the Cote d'Azur pattern  
Comprising fourteen 4 3/4in champagne coupes, eight 5 1/2in claret glasses and fourteen 6in water goblets, each with etched factory marks. (36)

---



### 477: Eight carved and painted figures, Erazo

USD 400 - 600

A collection of eight carved and painted figures  
modern  
Each inscribed G. O. ERAZO or G O E.  
the largest height 32in (81cm)

---

Image unavailable

### 478: A Louis XV/XVI transitional style commode

USD 700 - 900

A Louis XV/XVI transitional style gilt bronze mounted inlaid commode  
late 19th/early 20th century  
Surmounted by a marble top.  
height 34 1/2in (87.5cm); width 48 1/4in (122.5cm); depth 20in (51cm)

---



### 479: A Contemporary Rococo style upholstered armchair

USD 200 - 300

A Contemporary Rococo style limed wood and fully upholstered armchair  
with loose cushion  
height 35in (89cm); width 28in (71cm); depth of seat 23 1/2in (60cm)

---



### 480: A large Lingbi 'Contemplation' stone

USD 100 - 150

A large Lingbi 'Contemplation' stone  
height 15 1/2in (39.5cm); length 37in (94cm) width 20in (51cm)

---

## DTLA Collections and Estates Auction



### 481: A Louis XV style carved beechwood canape

USD 400 - 600

A Louis XV style carved beechwood canape  
circa 1900  
height 40in (102cm); width 51 1/2in (131cm); depth of seat 22in (56cm)

---



### 482: A Louis XV style mahogany games table

USD 250 - 350

A Rococo style mahogany envelope games table  
late 19th/early 20th century  
height 28 1/2in (72.5cm); width 21 3/4in (55.5cm); depth 22in (56cm)

---



### 483: English and French gold and silver accessories

USD 300 - 500

A collection of English and French gold, gold filled and sterling silver accessories  
various makers  
19th-20th century  
Including pens, pencils, knives, scissors, coin purses, a vesta case, other cases and a crocodile wallet, some variously engraved. (17), the wallet length 6in (15cm)

---



### 484: Puiforcat Art Deco silver, enamel cigarette case

USD 1,200 - 1,800

An Art Deco silver and enamel cigarette case  
Puiforcat, Paris  
circa 1930  
height 1in (2.5cm); width 6 1/4in (16cm); depth 3 1/4in (8cm)

---



### 485: Continental School, oil, Impressionist Riverscape

USD 250 - 350

Continental School (late 19th/early 20th century)  
Impressionist Riverscape with a Man in a Boat  
oil on canvas  
24 x 19in (61 x 48cm)

---



### 486: Biedermeier style inlaid bird's eye maple day bed

USD 800 - 1,200

A Biedermeier style inlaid bird's eye maple day bed  
20th century  
height 43 1/4in (110cm); width 93 3/4in (238cm); depth 35in (89cm)

---



### 487: Royal Dux vase and compote and a Van Briggle vase

USD 300 - 500

A Royal Dux porcelain figural vase and a figural compote together with a Van Briggle pottery vase  
early 20th century  
The Royal Dux vase with applied pad mark and impressed 1066 and 26; the Royal Dux figural compote with applied pad mark, green printed factory mark and impressed 18124; the Van Briggle vase with incised factory mark and Van Briggle Colorado Springs, CO V3 and G.P.  
heights of vases 14 and 20in (35.5 and 50.8cm); height of compote 19 1/2in (49.5cm)

---

## DTLA Collections and Estates Auction



### 488: Six Wedgwood blue jasperware articles

USD 100 - 150

Six Wedgwood blue jasperware articles  
20th century

Comprising a pair of vases, cache pot, jardiniere, pin tray and heart shaped covered box, each impressed WEDGWOOD and MADE IN ENGLAND.  
height of pair 7 5/8in (19.5cm); height of jardiniere 6 3/8in (16.3cm)

---



### 489: A George III mahogany whatnot

USD 400 - 600

A George III mahogany whatnot

early 19th century  
height 46in (107cm); width 31in (79cm); depth 19 1/4in (49cm)

---



### 490: A Swedish Neoclassical style painted center table

USD 300 - 500

A Swedish Neoclassical style pale blue painted center table  
modern  
height 29 1/2in (75cm); diameter 48in (122cm)

---



### 491: A Chinese carved rose quartz bowl and stand

USD 800 - 1,200

A Chinese carved rose quartz bowl and stand  
height 2in (5cm); width 9in (23cm); depth 4 1/2in (11.5cm)

---



### 492: Morris Broaderson, watercolor, Still Life

USD 150 - 250

Morris Broaderson (American, 1928-2011)  
Still Life with Hibiscus, Fish, Walnut and Root  
pencil and watercolor on paper  
signed lower right and dated 81  
10 1/2 x 8 1/2in (27 x 22cm)

---



### 493: A group of seventeen various prints

USD 300 - 500

A group of seventeen various prints  
19th-20th century  
Various subjects, some in colors.  
the largest overall 15 3/4 x 17 3/4in (40 x 45cm)

---



### 494: Three Continental patinated metal table articles

USD 500 - 700

Three Continental patinated metal table articles  
late 19th-20th century

Comprising a pair of bronze covered urns with verde antico pedestals and an equestrian figure of Bartolomeo Colleoni after Verrocchio.  
the urns overall height 10 1/2in (27cm); width over handles 7in (18cm)

---

## DTLA Collections and Estates Auction



### 495: A white painted carved wood easel

USD 300 - 500

A white painted carved wood easel  
20th century  
height lowered 64in (163cm); width 25in (64cm); depth 23 1/2in (59.5cm)

---



### 496: Four English and French furnishings

USD 200 - 400

Four English and French furnishings  
late 19th-20th century  
Comprising a Regency pine chiffoniere, a Regency style what not, a Louis XV style ebonized table and a George III style gilt metal mounted satinwood dumbwaiter.  
height of chiffoniere 49in (124.5cm); width 24 1/2in (62.5cm); depth 15in (38.5cm)

---



### 497: A set of four Baroque style beechwood side chairs

USD 200 - 300

A set of four Continental Baroque style stained beechwood side chairs  
modern  
height 41 1/2in (105.5cm); width 20in (51cm) depth of seat 16 1/2in (42cm)

---



### 498: A pair of white painted Solomonic columns

USD 500 - 700

A pair of white painted Solomonic columns  
modern  
height 82 1/2in (210cm); width 11in (28cm)

---



### 499: English School, watercolor, A Three Master Ship

USD 200 - 300

English School (19th century)  
A Three Master at Anchor  
watercolor and pencil on paper  
depicting a ship on the Bosphorus  
12 x 21in (30.5 x 53.5cm)

---



### 500: A group of four Eastern Orthodox icons

USD 400 - 600

A group of four Eastern Orthodox icons  
largest 12 1/4 x 10 1/2in (31.5 x 25.6cm)

---



### 501: English miniature pedestal desk & Italian box

USD 150 - 200

An English satinwood and mahogany miniature oval pedestal desk  
Together with an Italian walnut and marquetry box. (2)  
the desk height 5 1/2in (14cm); width 8in (20cm)

---



### 502: A pair of blond wood library steps

USD 600 - 800

A pair of blond wood library steps  
modern  
height 35 1/2in (90cm); width 16in (40.5cm); depth 31in (79cm)

---

## DTLA Collections and Estates Auction



### 503: Continental School, oil, two riverscapes

USD 300 - 500

Continental School (late 19th-20th century)  
Two works: Riverscapes  
oil on copper, each signed V. Olsen lower right; together with an oval landscape, oil on canvas (3)  
the two diameter 5 1/4in (13cm)

---



### 504: A pair of Contemporary Rococo stained oak stools

USD 300 - 500

A pair of Contemporary Rococo stained oak and fully upholstered stools  
height 18in (46cm); width 29 1/2in (75cm); depth 29 1/2in (55cm)

---



### 505: A Neoclassical style carved silvered wood lantern

USD 300 - 500

A Neoclassical style carved silvered wood three light hanging lantern  
post 1950  
height approximately 29 1/2in (75cm); diameter approximately 21in (54cm)

---



### 506: A Biedermeier parcel ebonized walnut side cupboard

USD 300 - 500

A Biedermeier parcel ebonized walnut side cupboard  
early 19th century  
height 37 1/2in (95.5cm); width 23in (58.5cm); depth 19in (48.5cm)

---



### 507: A Federal inlaid mahogany chest of drawers

USD 500 - 700

A Federal inlaid mahogany chest of drawers  
attributed to the workshop of Michael Allison, New York City  
early 19th century  
height 48 1/2in (123cm); width 45 3/4in (116cm); depth 21 3/4 (55cm)

---



### 508: A pair of Indo-Persian equestrian figures

USD 200 - 300

A pair of Indo-Persian equestrian figures  
20th century  
height 28 1/2in (72cm); length 22in (56cm); width 6 1/4in (16cm)

---



### 509: A Dutch Baroque style brass chandelier

USD 300 - 500

A Dutch Baroque style brass twenty eight light chandelier  
height approximately 35in (89cm); diameter approximately 44in (112cm)

---



### 510: Five pieces of Peking style glass tableware

USD 200 - 300

A five piece group of decorative Peking style glass tableware  
modern  
Comprising two vases, two plates and a censer.  
height of larger vase 11 1/2in (29cm)

---



## DTLA Collections and Estates Auction



### 511: An English mahogany extension dining table

USD 500 - 700

An English mahogany extension dining table  
The crank wind mechanism having one polished and two unfinished additional leaves.  
height 30 1/2in (77.5cm); width closed 64in (163cm); width open 111in (282cm); depth 44 1/2in (113cm)

---



### 512: Six British sterling silver desk accessories

USD 600 - 800

A six piece group of British sterling silver desk accessories  
various makers  
18th-20th century  
Comprising a small taperstick by Richard Gosling, 1718, an Irish chamberstick by William Bond, 1797, an octagonal inkwell, Collingwood & Co., 1931, a single well writing stand by C.S. Harris & Sons, 1911, a double well writing stand by William Hutton & Sons, 1910 and a paper clip by Clive Norman Bullivant; together with a Japanese rocking blotter. (7) the larger writing stand height 2 1/4in (6cm); width 9in (23cm); depth 6 1/4in (16cm); total weighable silver approximately 44oz troy

---



### 513: An Italian Rococo style painted commodino

USD 250 - 350

An Italian Rococo style parcel gilt and paint decorated commodino  
20th century  
height 32 1/4in (82cm); width 21in (53.5cm); depth 15in (38cm)

---



### 514: A near pair of Italian Baroque style armchairs

USD 700 - 900

A near pair of Italian Baroque style parcel gilt carved walnut armchairs  
incorporating antique elements  
height 49in (124.5cm); width 28in (71cm); depth of seat 16in (40.5cm)

---



### 515: A Federal painted pine and oak tilt top tea table

USD 100 - 200

A Federal paint decorated pine and oak tilt top tea table  
early 19th century  
height 30in (76cm); width 22in (56cm); depth 15in (38cm)

---



### 516: Three Continental porcelain articles

USD 300 - 500

Three Continental porcelain articles  
early 20th century  
Comprising a Vienna style vase centered by three portrait panels, height 5 3/4in; Sevres style cabinet plate decorated with a pair of lovers in a landscape, signed Goben(?), pseudo printed Sevres and Chateau marks, diameter 9 1/2in and a Vienna style reticulated cabinet plate: Amor's Qual, black painted title and underglaze blue beehive, diameter 9 1/4in.

---



### 517: A Levantine backgammon board and a horn chess set

USD 200 - 300

A Levantine backgammon board and a horn chess set  
20th century  
the board closed height 3in (8cm); length 19 1/2in (50cm); depth 10in (25.5cm)

---

## DTLA Collections and Estates Auction



### 518: An American pine and oak pin top farm table

USD 400 - 600

An American pine and oak pin top farm table  
18th century  
Fitted with two drawers to the frieze below a detachable top.  
height 30 1/4 (77cm); width 78 1/4 (199cm); depth 34 3/4in (88.5cm)

---



### 519: A Pakistani carpet

USD 600 - 800

A Pakistani carpet  
dimensions approximately 13ft 11in x 10ft 1in (424 x 308cm)

---



### 520: A marble mounted Corinthian column form pedestal

USD 600 - 800

A marble gilt bronze mounted Corinthian column form pedestal  
height 45 1/4in (115cm); width of top 10in (25.5cm); depth of top 10in (25.5cm)

---



### 521: A patinated metal and glass six light chandelier

USD 500 - 700

A patinated metal and beaded glass six light chandelier  
height approximately 24in (61cm); diameter approximately 27in (68.5cm)

---



### 522: A French bronze epergne and pair of candelabra

USD 300 - 500

A French bronze and clear glass five part epergne  
late 19th century  
Together with a pair of Louis XVI style bronze two-light candelabra. (3)  
the epergne height 11in (28cm); diameter 12 1/4in (31cm)

---



### 523: A Louis XV giltwood & faux porphyry center table

USD 400 - 600

A Louis XV carved giltwood and faux porphyry inset center table  
18th century and later  
height 29in (73.5cm); width 35 3/4in (91cm); depth 20 1/4in (51cm)

---



### 524: An Italian Rococo style painted circular stool

USD 500 - 700

An Italian Rococo style paint decorated circular stool  
20th century  
height 17 1/2in (44.5cm); diameter 28in (71cm)

---



### 525: Stark Samarkan carpet

USD 500 - 700

A contemporary Stark Samarkan pattern carpet  
dimensions approximately 16ft 8in x 12ft 10in (508 x 391cm)

---