

EZX-60

# Portable X-ray System

New paradigm of Intra-Oral X-ray system is now at hand.  
PORT-X II makes your dental clinic full of ease and comfort.

## Compact Outside, Smart Inside

- Camera Type (Wireless)
- Rechargeable Battery
  - Graphic LCD



Product Name :  
**PORT-X II**



 **GENORAY**  
www.genoray.com

Digital X-ray system maker, **GENORAY Co.,Ltd.**

# Portable x-ray system

**EZX-60**

New paradigm of Intra-Oral X-ray system is now at hand.  
PORT-X II makes your dental clinic full of ease and comfort.

## Features

- Light and small with rechargeable battery enables easy shooting and keeping everywhere
- Small dose of radiation keeps patients and dentists away from radiation
- High performance Tube and HFG makes sharp and clear images
- Use with digital sensor as well as chemical film



## PORT-X II™ Technical Specifications & Dimensions

X-ray Generator	Type	High Frequency Inverter
	Power Output	180W
X-ray Installation	Tube Voltage	60 kV
	Tube Current	2mA
	Heat Capacity	8.5 KHU
X-ray Tube	Anode Type	Stationary
	Anode Angle	20°
	Focal Spot	0.8mm
X-ray Control	Exposure Time Set	56 Steps (0.01 ~ 2.0 sec)
Power Requirement		22.2 VDC
Weight	Main Body	2.35 kg
	Accessory	0.6 kg
Dimensions	Main Body	197 x 147 x 145 (mm)
	Charger	100 x 65 x 35 (mm)

• The specifications & Dimensions above can be changed without notice.

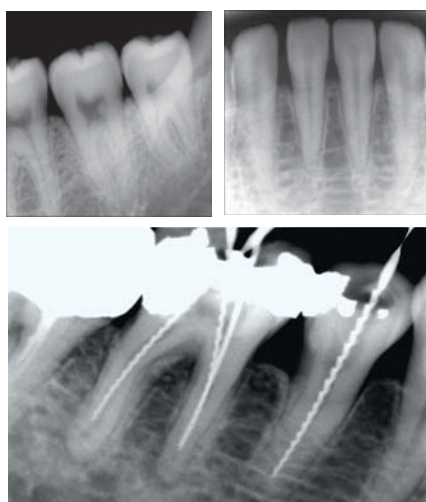
## Components of PORT-X II™

### Main Unit

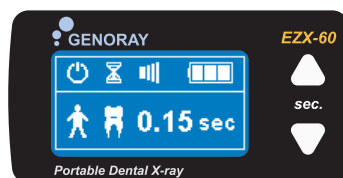
- X-ray Generator / Beam Limiting Device / Battery

### Accessories

- Recharging Unit / Staying Necklace

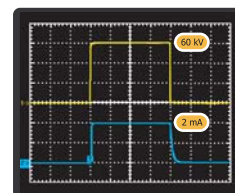


### Display Graphic LCD



User can view the operation through graphic LCD with high quality

### High Frequency Inverter



Stable output of X-ray radiation, Excellent image quality.