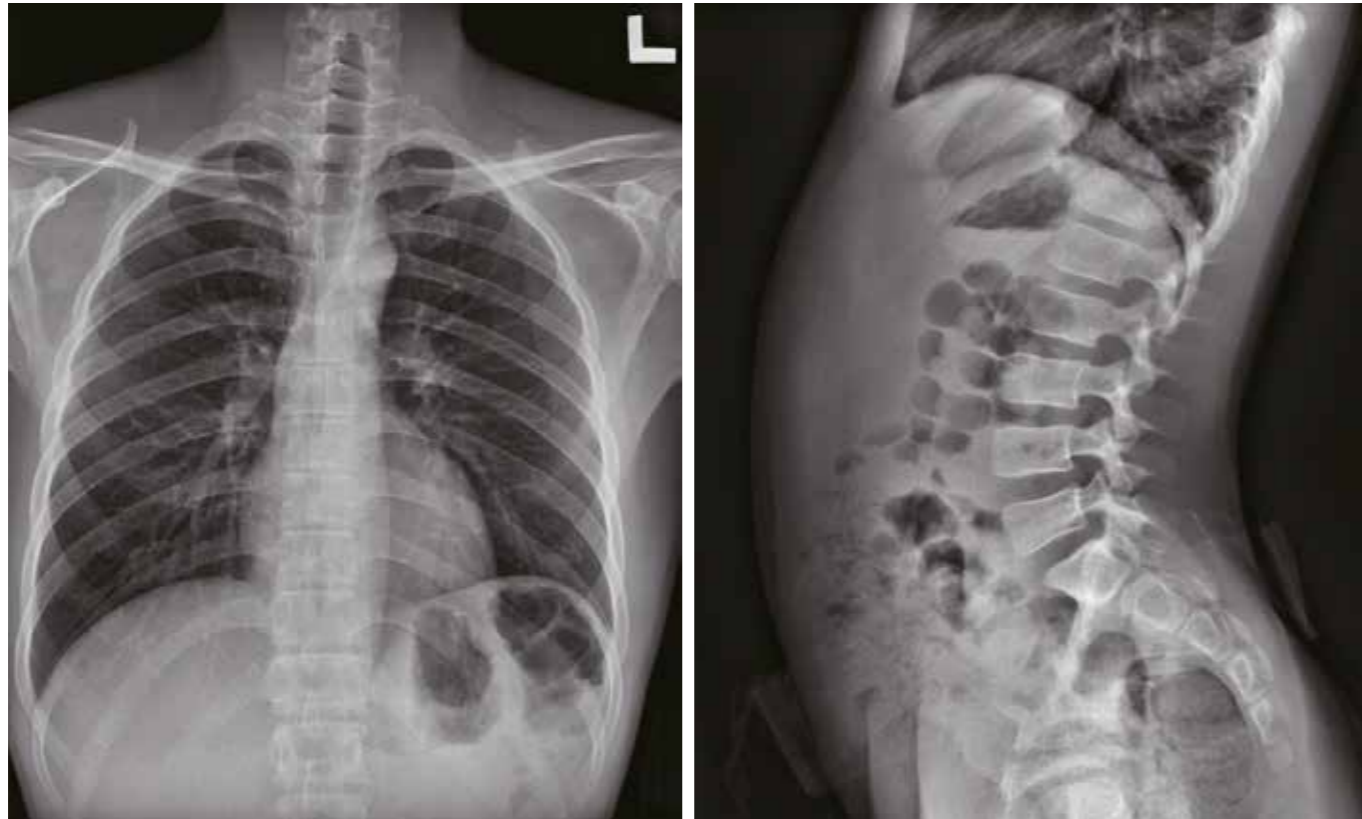


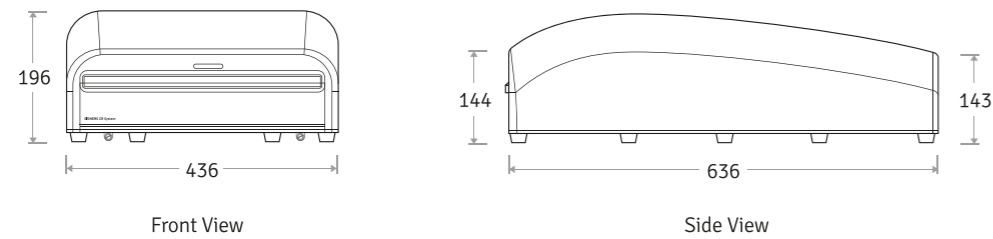
Sample Images\_ Optimized Image quality in Clinic



### SUPiA Specifications

<b>Cassette</b>	SUPiA CR Cassette 14 x 17 (inch) SUPiA CR Cassette 10 x 12 (inch) SUPiA CR Cassette 18 x 24 (cm)	<b>Network</b>	100 MBit
<b>Throughput</b>	Up to 72 IPs/hour (14 x 17" /160µm)	<b>PC Connection</b>	USB 2.0
<b>Slots</b>	Single Cassette feed	<b>Computer Min. requirements</b>	OS : Win 7 or 10 CPU : Intel i3 RAM : 4GB HDD : 500GB Monitor : More than 17" LED Monitor
<b>Dimensions (W x D x H)</b>	436 x 636 x 196mm	<b>Operating conditions</b>	Temperature : 10 ~ 30°C Humidity : 15 ~ 82% RH
<b>Weight</b>	21.5kg (47.4lbs)		
<b>Grayscale Resolution</b>	Acquisition : 16 bits per pixel Display : 12 bits per pixel		
<b>Power Supply Conditions</b>	Single Phase 50 ~ 60Hz AC 90 ~ 264V		

### SUPiA Dimensions



**SIGNERS CO., LTD.**  
E-mail : supia@signers.co.kr



COMPUTED  
RADIOGRAPHY  
**SUPiA**  
ELF OF FOREST

Shortcut to get **DIGITAL X-RAY**



## Overview

SUPiA offers such a better clinic environment with no chemicals, ideal space, high resolution image quality and affordability.

## Compact & Lightweight

- The length is just 636mm, so you can put it on every normal desk
- It weighs only 21.5kg(47.4 lbs)

## High Throughput

- Intuitively able to know the state of scanner

Cassette	Resolution	Image access (sec)	Erase (sec)	Total (sec)	IPs/Hour
1417	80µm	37	27	66	62
	160µm	21	27	50	72
1012	80µm	29	20	51	70
	160µm	17	20	39	92

Can see images scanned in 10 steps sequentially

## Durability

- Extremely simple structure design
- Cassette sorter protects the inside of scanner from dust

## Authentic Rigid Type among clinic CRs

- No damage or scratches to the image plate during scanning & erasing
- Scan & Erase without roller
- No cut-off image in winter or cold conditions

## Cassette

### Strong structure

- Strong enough against external impact
- Able to bear up to 150kg of weight on cassette

### Featherlight

- 14 x 17" :2.1kg / 10 x 12" :1.3kg / 18 x 24cm : 0.67kg

### Dust free & Easy cleaning

- Easy to clean up dust on IPs
- Prevent dust from outside

### User Friendly design

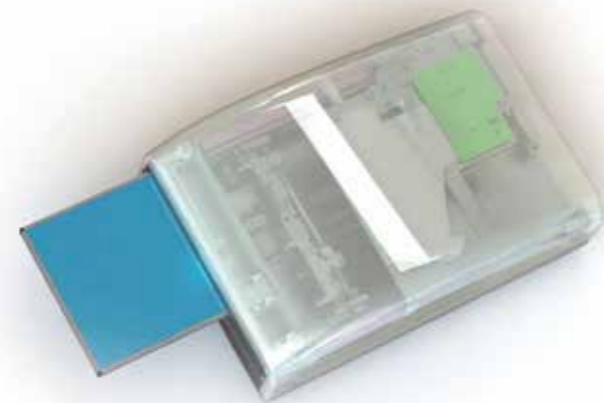
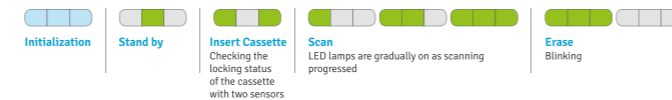
- Barcode label
- Various colors  
14 x 17(Green), 10 x 12(Blue), 18 x 24cm(Pink)

## Barcode System

- Automatic cassette size recognition and scanning

## Front LED display

- Intuitively able to know the state of scanner



## Overview (SUPiA gram - Console software)

SUPiA gram, our console software, is simple, fast, stable and compatible.

## Emergency study

- Instantly scan in Worklist without creating patient information
- Drag & Drop scanned image to patient list



## Compatibility

- Can connect with any DICOM printer and Paper printer
- Up to 4 divisions possible



## Easy multilingual support

- It can be easily applied by changing the English list to the corresponding language



## Simplicity

- Easily understand the shooting direction by displaying the tube label as the shape of the cassette plate

## Plenty of editable Tools

- Flip / Rotate
- Distance
- Angle
- Rectangle
- Marking
- Pan / Zoom
- Simple image processing

## Intuitive UI



## Lightweight and Robust

- Runs naturally on low-end computers and monitors

## Preview

- Can see real-time scanned image
- Decide immediately to repeat

## Special Tools

- Rotate to the desired angle



- Auto Stitching (coming soon)
- Client Viewer (coming soon)