



FIREQUIP®

P R O D U C T C A T A L O G U E



**Your First Choice For
'Fire & Safety Solutions'**



DRY CHEMICAL POWDER STORED PRESSURE

Best quality Dry powder utilize a specially fluidized and siliconized mono ammonium phosphate dry chemical (MAP). It chemically insulates class A fires by melting at approximately 170°C and coats surface to which it is applied. It smothers and breaks the chain reaction of class B fires and will not conduct electricity back to the operator. Excellent on class C fires.

✓ Reasonable, efficacy, multipurpose.

✗ Dirty, it requires hard work for cleaning after use. Low visibility during discharge.



Model	Extinguishing Agent	Capacity of Extinguisher	Weight of Charged Extinguisher appx Kgs.	Quantity of Extinguishing Agent	Propellant	Minimum Discharge 85% & Duration in Sec.	Range of Jet Horizontal Mtr.	temperature Range
DP01SP	Dry Powder	1 Kg.	2.050 Kg.	1 Kg.	Nitrogen	8 - 10	2 Mtr.	-20° to +55°
DP02SP	Dry Powder	2 Kg.	3.700 Kg.	2 Kg.	Nitrogen	8 - 10	2 Mtr.	-20° to +55°
DP04SP	Dry Powder	4 Kg.	6.500 Kg.	4 Kg.	Nitrogen	15 - 20	4 Mtr.	-20° to +55°
DP06SP	Dry Powder	6 Kg.	9 Kg.	6 Kg.	Nitrogen	15 - 20	4 Mtr.	-20° to +55°
DP09SP	Dry Powder	9 Kg.	15 Kg.	9 Kg.	Nitrogen	23 - 30	6 Mtr.	-20° to +55°



DRY CHEMICAL POWDER CARTRIDGE

✓ Reasonable, efficacy, multipurpose.

✗ Dirty, it requires hard work for cleaning after use. Low visibility during discharge.



Model	Extinguishing Agent	Capacity of Extinguisher	Weight of Charged Extinguisher appx Kgs.	Quantity of Extinguishing Agent	Propellant	Minimum Discharge 85% & Duration in Sec.	Range of Jet Horizontal Mtr.	temperature Range
DP06SG	Dry Powder(ABC)	6 Kg.	11 Kg.	6 Kg.	Co ₂ gas	15 - 20	4 Mtr.	-20° to +55°
DP06SG	Dry Powder(BC)	6 Kg.	11 Kg.	6 Kg.	Co ₂ gas	15 - 20	4 Mtr.	-20° to +55°
DP09SG	Dry Powder(ABC)	9 Kg.	11.500 Kg.	9 Kg.	Co ₂ gas	25 - 30	6 Mtr.	-20° to +55°





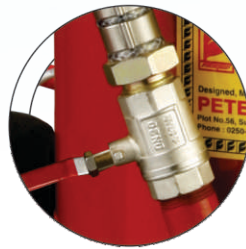
HIGHER CAPACITY DRY CHEMICAL POWDER



DP25CTG
25 Kg



DP25Co₂
25 Kg



DP50Co₂
50 Kg



DP75Co₂
75 Kg



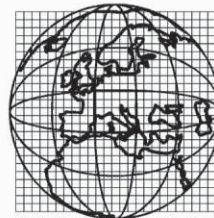
DP150Co₂
150 Kg



200 Kg/200 Ltr

Model	Extinguishing Agent	Capacity of Extinguisher	Weight of Charged Extinguisher appx Kgs.	Quantity of Extinguishing Agent	Propellant	Minimum Discharge 85% & Duration in Sec.	Range of Jet Horizontal Mtr.	temperature Range
DP25CTG	DRY POWDER	25 Kg.	45.5 Kg.	25 Kg.	Co ₂ gas	25 - 30	6 Mtr.	-20° to +55°
DP25Co ₂	DRY POWDER	25 Kg.	51 Kg.	25 Kg.	Co ₂ gas	25 - 30	6 Mtr.	-20° to +55°
DP50Co ₂	DRY POWDER	50 Kg.	88 Kg.	50 Kg.	Co ₂ gas	40 - 50	8 Mtr.	-20° to +55°
DP75Co ₂	DRY POWDER	75 Kg.	126 Kg.	75 Kg.	Co ₂ gas	50 - 60	6 Mtr.	-20° to +55°
DP150Co ₂	DRY POWDER	150 Kg.	220 Kg.	150 Kg.	Co ₂ gas	60 - 120	10 Mtr.	-20° to +55°

CERTIFIED BY



RINA QUACER

ISO 9001-2008



Indian Register of Shipping



MECHANICAL FOAM FIRE EXTINGUISHER

Mechanical Foam type Fire Extinguisher is designed to extinguish A & B class of fire involving Wood, Paper, Cloth, Textile, Stationery & Very Special Blanket Effect on Flammable & Volatile Liquids Like Oil, Petrol, Kerosene, Solvent & Chemical, Wax, Resins Etc.



MF09SG

9 Ltr



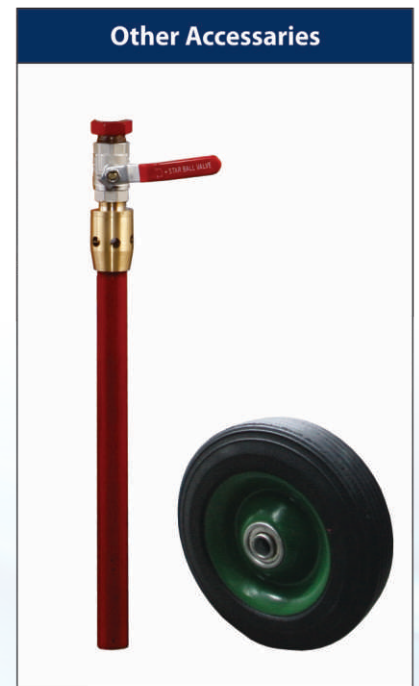
MF50CT

50 Ltr



MF135CY

135 Ltr



Model	Extinguishing Agent	Capacity of Extinguisher	Weight of Charged Extinguisher appx Kgs.	Quantity of Extinguishing Agent	Propellant	Minimum Discharge 90% & Duration in Sec.	Range of Jet Horizontal Mtr.	temperature Range
MF09SG	AFFF 6%	9 Kg.	15 Kg.	9 Kg.	Co ₂ gas	25 - 60	6 Mtr.	+1° to +55°
MF50CT	AFFF 6%	50 Kg.	79 Kg.	50 Kg.	Co ₂ gas	40 - 180	10 Mtr.	+1° to +55°
MF135CY	AFFF 6%	135 Kg.	223 Kg.	135 Kg.	Co ₂ gas	60 - 180	10 Mtr.	+1° to +55°



WATER TYPE CO₂ FIRE EXTINGUISHER

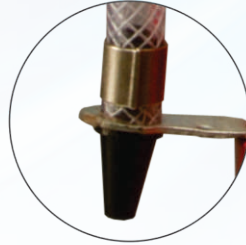
Water Co₂ fire extinguisher cartridge type provide safety against "A" class of the fire which involves material like Wood, Paper, Cloth, Plastics & Fiber, Rubber Etc.



WP09SG

9 Ltr

3A



WP50CT

50 Ltr



WP135CY

135 Ltr



Other Accessories

Model	Extinguishing Agent	Capacity of Extinguisher	Weight of Charged Extinguisher appx kg.	Quantity of Extinguishing Agent	Propellant	Minimum Discharge 90% & Duration in Sec.	Range of Jet Horizontal Mtr.	temperature Range
WP09SG	Water	9 Lit.	14 kg.	9 Lit.	Co ₂ gas	60 - 120	6 Mtr.	-1° to +55°
WP50CT	Water	50 Lit.	79 kg.	50 Lit.	Co ₂ gas	40 - 180	10 Mtr.	-1° to +55°
WP135CY	Water	135 Lit.	228 kg.	135 Lit.	Co ₂ gas	60 - 180	10 Mtr.	-1° to +55°



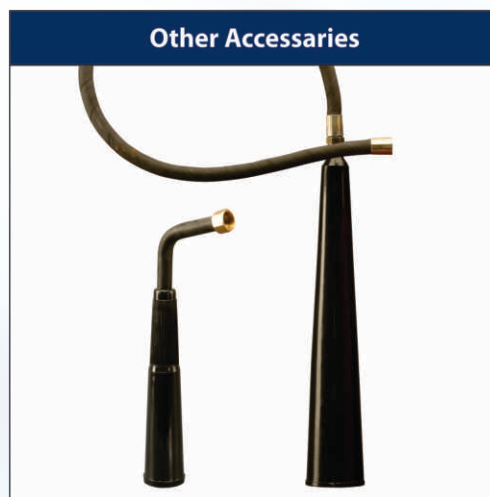
CO₂ FIRE EXTINGUISHER

Carbon Dioxide extinguishers are filled with non-flammable carbon dioxide gas under extreme pressure. You can recognize a CO₂ extinguisher by its hard horn. The pressure in the cylinder is so great that when you use one of these extinguishers, bits of dry ice may shoot out the horn. CO₂ cylinders are red and range in size from 5 lbs to 100 lbs or larger. In the larger sizes, the hard horn will be located on the end of a long, flexible hose.

- ✓ Reasonable, efficacy, multipurpose.
- ✗ Dirty, it requires hard work for cleaning after use.
Low visibility during discharge.



Model	Extinguishing Agent	Capacity of Extinguisher	Weight of Charged Extinguisher appx Kgs.	Quantity of Extinguishing Agent	Propellant	Minimum Discharge 85% & Duration in Sec.	temperature Range
2 Kg.	Co ₂ gas	2 Kg.	9 Kg.	2 Kg.	Co ₂ gas	8-16	-20 to + 55
4.5 Kg.	Co ₂ gas	4.5 Kg.	17 Kg.	4.5 Kg.	Co ₂ gas	10-16	-20 to + 55



'D' METAL FIRE EXTINGUISHER

Class 'D' fire extinguishers are specifically designed for combustible metal fires. Fires involving metals such as magnesium, sodium, potassium and sodium-potassium alloys are extinguishable with the Class 'D' extinguisher. This is ideal for a metal shop and other places where metals are heated.



DP05MT
5 Kg



DP10MT
10 Kg

HFC 236 CLEAN AGENT

The HFC 236 Clean Agent Extinguisher is the world's most advanced and eco-friendly extinguisher because of its zero ODP (Ozone Depletion Properties). It's the corporate world's preferred extinguisher.



**CA02
(Kitchen)**
2 Kg

Kitchen Fire



CA02
2 Kg



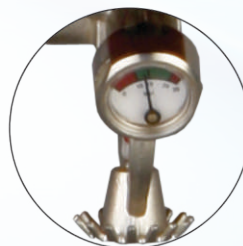
CA04
4 Kg



CA05MD
5 Kg



Modular
Capacity 5 & 10 Kg.
Powder BC & ABC, Gas: HFC 236



Other Accessories



FIRE BOX



Other Accessories



FIREQUIP® IN THE SERVICE SINCE



ISSUED IN THE INTEREST OF FIRE PROTECTION BY :

PETER AUTOKITS PVT. LTD.

Plot No. 56, Survey No. 75, Valiv Phata, I Pole Road, Vasai (East), Thane- 401 208
Tel: 0250-3245550 Email: fire@vsnl.com / firesquip@gmail.com