

ARCHITECTURAL ASSESSMENTS



ABOUT US

WDi Architecture has been setting the industry standard as a premier full-service A/E professional firm. Our success is driven by our superior workmanship, quality delivery, and exceptional customer service. We are committed to your complete satisfaction, from the initial consultation to project completion, and our dedication to excellence sets us apart from the competition.

Our team's longevity is a testament to our comprehensive understanding of architectural planning and implementation. With WDi Architecture, you can expect the highest level of professionalism, attention to detail, and commitment to quality. Whether you need architectural design, engineering, or construction services, our expertise and experience will bring your vision to life. Let us help you achieve your goals and make your project a success.

OUR SERVICES

- Architectural, Planning & Design
- Construction Administration
- Project Management
- Existing Conditions Documentation
- Evaluation/Feasibility/Assessment Services

COMPANY INFO

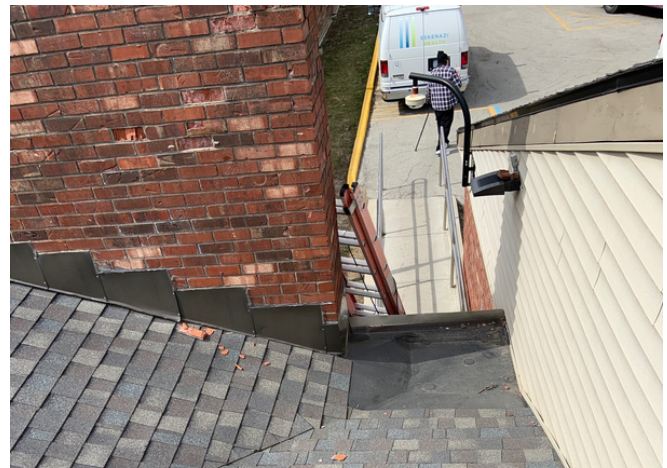
- Established 1995
- Professional Team with More than 100 Years Combined Experience
- CAGE Code - 1S1X1
- NAICS Codes - 541310, 541330, 541490, 541611, 541350
- UEI - Z2KWNEJS3KD6
- NCARB Certification

PROVEN PERFORMANCE



Eskenazi Health lacked accurate floor plans for three satellite facilities. WDi was asked to review them and document any variations found compared to the provided floor plans. We modified and reformatted existing AutoCAD files, adding room names and numbers and additional notes. We also conferred with the client to determine appropriate room numbering systems. The project was complicated by the need for client confidentiality, and we had to work when no clients were present and be cautious about what we photographed. Despite these challenges, we completed the project and provided Eskenazi with the necessary information for insurance and future reference.

Originally built in the 1970s to serve as an auto dealership, this building's showroom and offices were covered in an Exterior Insulation and Finish System (EIFS). However, parts of this system had separated from the backing, prompting Eskenazi to engage WDi for an investigation and recommendation of possible solutions. Working with a forensic specialist, we provided a report comparing the advantages and liabilities of various options, from spot repairs to the complete replacement of all EIFS. After discussions with Eskenazi, it was decided to only replace the two walls with the most significant deterioration with a new, water drainage EIFS, while addressing other factors contributing to the failure in this area. WDi also finalized the documents to guide the contractor in performing the repairs.



Greater Northwest Baptist Church acquired a 2.8-acre property adjacent to their current location and asked WDi to assess the existing house, garage, and grounds for potential uses such as tutoring, athletics, and social functions. We also provided cost projections for new development or alterations to existing facilities. WDi visited the property, visually inspected the buildings and grounds, and interviewed relevant staff and stakeholders to understand the church's goals. We presented several possible scenarios and provided guidance on the next steps for future growth. The assessment was approved, and phase one (survey) has been completed.

COMMERCIAL ♦ INSTITUTIONAL ♦ MULTI-FAMILY ♦ MIXED DEVELOPMENT

Professional Liability Insurance: \$1,000,000/\$2,000,000 with \$3,000,000 Umbrella (No Claims)
 Registered Architect #AR10100103 Registered Interior Design #R1000463
 Architect & Interior Design - Indiana, Illinois, Ohio and Kentucky