



2025 IMPACT REPORT

Strengthening Families. Empowering Communities.

Board of Directors 2024-2025

JOCELYN COOPER

President of Board of Directors

ANITA RUBIO

Vice-President Chair of Board of Directors
Operation Manager, Firehouse Community Corporation

ADOLFO LOPEZ

Modesto City School Board Trustee Area 7

AGAMJOT SINGH

Next Generation of Board Members

HOMERO MEJIA

Chair of Modesto City School District Board of Education

JOSHUA CLAYTON

Sheriff Stanislaus County

SERGIO CAMARILLO

Sutter Memorial Hospital

STERLING FOUNTAIN

Community Advocate and Volunteer

Meet the Team



PERFECTO MUÑOZ
Chief Executive Officer



REYNA PERALES
Chief Program Officer



BLANCA MARIN
Executive Assistant



ANDREA MACIAS
LCSW Supervising Clinician



LILIANA FELIX
Program Director



JASMINE P. CORENA
Director of Community
Engagement & Public Relations



LIKHI RIVAS
Community Engagement
Specialist



STEPHANIE ORTIZ
Lead Project Coordinator



MONICA RIVERA-LEON
Lead Project Coordinator



MARIBEL TORRES
Youth Instructor



CESAR SALTO
Communications & Civic
Engagement Consultant

A message from our Chief Executive Officer: _____

The 2025 Impact Report marks our second annual reflection on the work, resilience, and progress of the West Modesto Community Collaborative. Throughout this year, our agency remained steadfast in its commitment to serving our community, reaching over 20,497 individuals and family members through outreach and direct services.

While this number reflects a slight decrease from prior years, it is important to recognize the broader context that shaped our work, ongoing immigration reform and our temporary relocation from the King Kennedy Memorial Center during renovations. Despite these challenges, our team ensured continuity of services without disruption. We remained present and accessible, meeting community members where they are, across Modesto, throughout the county, in migrant centers, and alongside agricultural workers and families navigating displacement and hardship.

We were honored to host a powerful presentation by Jerry Tello, who reminded us of the importance of mental health, cultural identity, and staying grounded in one's sense of self. Through our Health Equity Initiative, we conducted four outreach and education events, serving 740 individuals. Additionally, the Valley Thrive Awareness Initiative reached an extraordinary 13,931 individuals, led by four dedicated Community Health Workers focused on advancing health and wellness in our communities.

A significant highlight of this year has been our partnership with the Sutter Health Residents Program. This collaboration created meaningful opportunities for residents, under physician supervision, to provide culturally responsive health education and limited health screenings focused on chronic diseases disproportionately impacting Latino and vulnerable populations in West and South Modesto. Families also benefited from nutritional education and access to fresh fruits and vegetables. This partnership has truly been a blessing and a model of community-centered care.

We are equally grateful for the continued support of The California Endowment, whose investment is helping us expand access to quality healthcare and address critical Social Determinants of Health. Through this partnership, we will be able to hire a dedicated Community Health Worker who will play a vital role in strengthening our outreach and support services.

This position will enhance our capacity to assist community members in navigating healthcare access, addressing food insecurity, securing affordable housing, and advocating for their needs. The addition of a Community Health Worker will allow us to deepen our impact, build stronger relationships, and ensure that no one in our community is left behind.



Our support for farmworkers remains a core priority. Since the COVID-19 pandemic, we have continued to respond to the urgent needs of agricultural workers facing job loss, food insecurity, and health challenges. Through the California Workplace Outreach Project (CWOP), we created safe spaces at worksites, provided tools for self-advocacy, and expanded access to resources. In 2025, we served 3,022 individuals, hosted four workshops, organized two community events, and conducted outreach at three migrant centers.

Community engagement continues to be at the heart of our work. Our Community Builders program hosted 17 meetings focused on air quality, climate resilience, advocacy, and cultural expression. Meanwhile, our “Vibin with West Modesto” podcast amplified community voices through 21 episodes featuring 18 guests, including local leaders, residents, and changemakers.

As we look ahead, we are preparing for the 2026–2027 cycle by developing a strategic workplan grounded in the principles of El Plan del Pueblo (The People’s Plan for Social and Economic Development). Guided by community voice and data, particularly the recommendations outlined in the report, we will establish clear goals and priorities that reflect the lived experiences and aspirations of those we serve. I encourage all who are interested to explore this important report, available on our website.

As we reflect on 2025, I am filled with deep gratitude for the collective strength and commitment that continues to drive the work of the West Modesto Community Collaborative forward. To our Board of Directors, thank you for your leadership, vision, and steadfast dedication to our mission. Your guidance ensures that we remain grounded in purpose while continuing to grow with intention. To our staff, your passion, resilience, and unwavering commitment to the community are the heart of this organization. Every outreach effort, every conversation, and every service provided reflects your belief in the dignity and potential of those we serve. To our funders and partners, thank you for your trust and investment in our work. Your support allows us to respond to urgent needs while also building long-term solutions that address health, equity, and opportunity for our most vulnerable communities.

Together, you have made 2025 a year of impact, collaboration, and meaningful progress. Because of you, we continue to uplift families, strengthen communities, and create pathways for a healthier and more equitable future. We look ahead with hope and determination for what is to come, knowing that our collective efforts will continue to create lasting change.



Perfecto Muñoz, MA, PhD, MPH
Chief Executive Officer,
West Modesto Community Collaborative

Table of Contents

Board of Directors	I
Our Team	II
Message from CEO	III-IV
Table of Contents	V
Community Impact	1
Where and How	2
Direct Services	3
Senior & Youth	4
Outreach & Education	5
Supporting Our Farmworkers	6
Community Engagement	7
Client Highlight	8
Partners 24-25	9
2025 Highlights	10
2025 Financials	11
Ways to Give	12
Connect with Us	13

Community Impact at a Glance



West Modesto Community Collaborative worked alongside community partners to engage and uplift individuals, families, and children across Stanislaus County through integrated direct services, community-rooted advocacy, and educational initiatives designed to advance equity and close opportunity gaps.



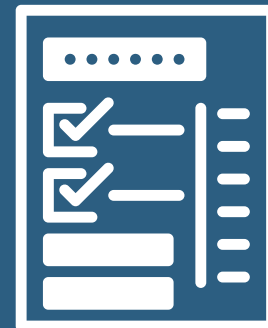
2,877

TOTAL BASIC NEEDS



20,497

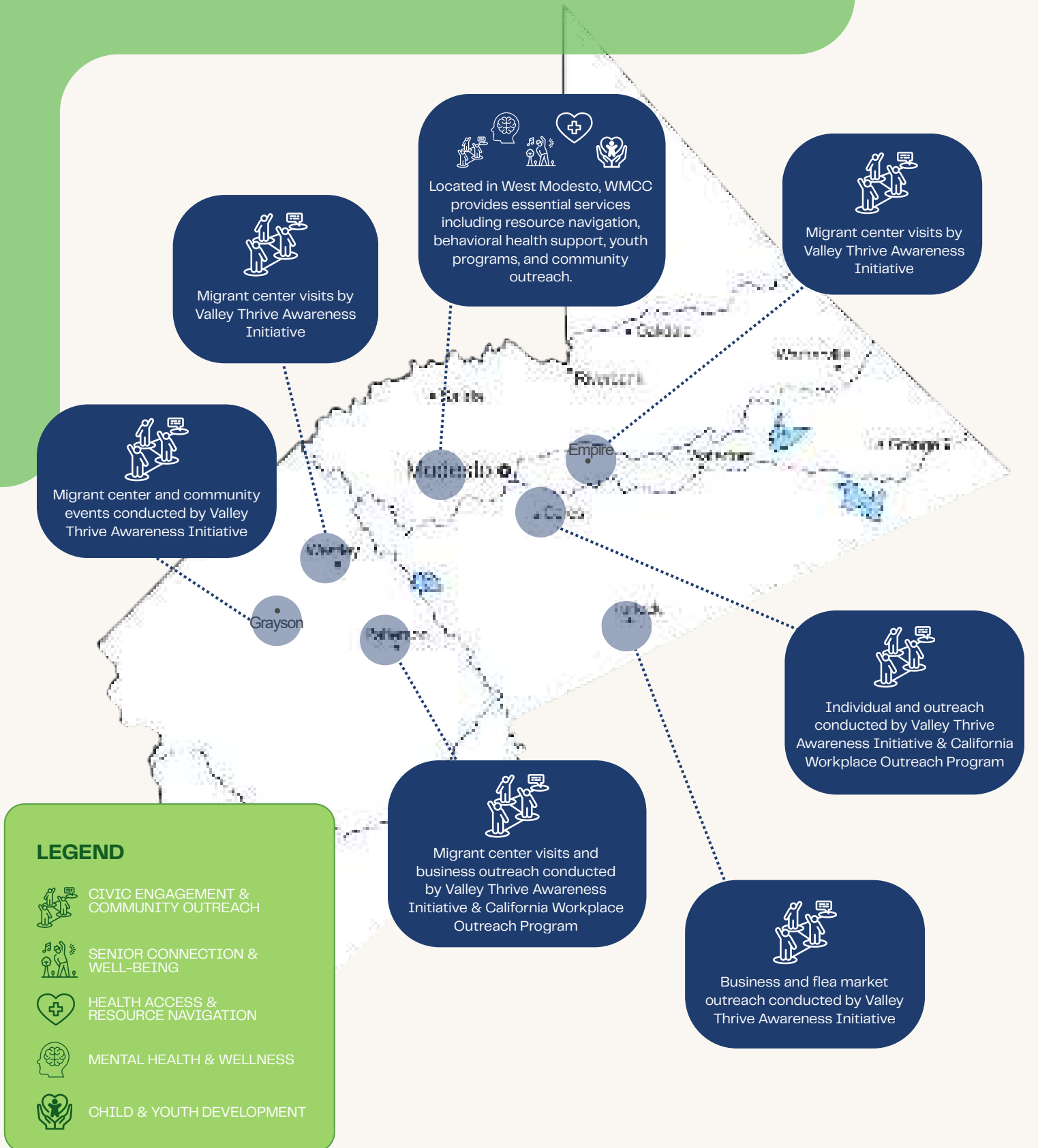
**TOTAL INDIVIDUALS &
FAMILIES REACHED**



838

TOTAL REFERRALS MADE

WMCC in Action: Where & How We Serve



Direct Services



Navigation Program

754

Total Individuals Served

185

Total Families Served

289

Total Referrals Made

Top Services Provided:

Food, Child Development, Housing Support



Wellness Center

203

Behavioral Health Counseling
sessions provided

7

Wellness Workshops Held

72

Total Number of Participants

“

“Our direct services guide individuals and families through difficult times, connecting them to the resources that create hope, security, and opportunity.”

–Liliana Felix,
Program Director

”

Events Spotlight



Move Your Body, Calm Your Mind



Jerry Tello,
Mental Health Conference

Senior & Youth Programs



GREEN ROOM YOUTH CLUB

32

Youth Participants

70

Classes Held

Session Topics: Mental Health, Summer of Exploration, Voices of the World



BABY THRIVE

23

Mothers Served

24

Families Served

312

Essentials Donated



LIGHTNING BUGS

24

Families Served

30

Children Served



SENIOR LUNCHEONS

24

Senior Luncheons
Hosted

1528

meals provided

75

participating seniors



Outreach & Education



Health Equity Initiative

740

Total Individuals Reached

4

Total Community Events



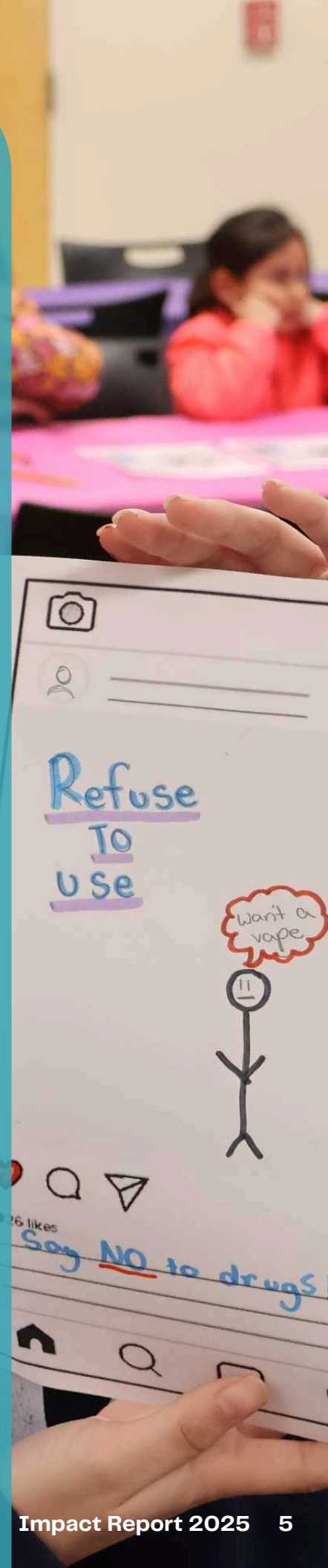
Valley Thrive Awareness Initiative

13,931

Total Individuals Reached

4

Total Community Workshops



Supporting Our Farmworkers



California Workplace Outreach Project (CWOP)



3,022

Total Individuals Reached

4

Farmworker & Community Workshops



2

Community Events

3

Migrant Center Visits

"The work I do allows me to build trust within our community, be a helping hand for others, and create a safe space where workers feel empowered to speak up for themselves and feel protected."

-Stephanie Ortiz,
Lead Project Coordinator

"Estoy muy agradecida con organizaciones como la suya que vienen a visitarnos, ya que cosas pueden complicarse una vez que comienza la temporada. Nos sentimos respaldados a través de la información que nos dan y por el equipo de protección."

-Stanislaus Farmworker

Community Engagement



COMMUNITY BUILDERS

17

Total meetings held

258

Total Participants

Meeting Topics: Air Quality, Climate Resilience, Community Advocacy, and Cultural Education & Expression.



VIBIN' WITH WEST MODESTO

21

Total Episodes

18

Total Guest

1327

Total Listeners



Top Episode:
Breaking Cycles
with the Public
Defenders Office

LISTEN TO AN EPISODE!
SCAN HERE



“

“Creating safe spaces for marginalized communities to speak openly about the systems that impact them is essential. I take pride in building bridges that help individuals find their voice, advocate for themselves, and push back against those barriers.”

–Likhi Rivas,
Community Engagement Specialist

”

Meet Angelo

An independent Uber driver whose community-oriented spirit, gratitude, and hope fuel his inspiring journey and the connections he builds every day.



Can you tell us a little bit about your life before the Navigation Program?

I got sick and was out of work for about three months. During that time, I couldn't pay my bills and didn't know what I was going to do. It was really hard. I just kept looking for resources that could help me get through.

What kind of help did you receive from the program?

The program helped me pay my MID bill, which made a huge difference. I also received support

for gas and groceries. At the time, I had very little food, and not having gas made it difficult to get around. Being able to fill up my tank and buy groceries helped me get back on my feet.

Can you share a specific moment when you felt the program made a difference for you?

When I received the gas card and grocery support, it really changed everything for me. I didn't even know programs like this existed, and I'm so grateful to have been part of it. Once I had gas and food, I was able to start driving again, which is my livelihood. That support helped me turn things around. Honestly, things would have been much worse. I was already in a difficult situation, and without this help, it would have been overwhelming. I really needed support, and it came at the right time.

Why is it important for the county to continue funding programs like this?

There are so many people out there who are going through situations like mine and need help. I've spoken with others who are struggling, and it's incredibly hard when you don't have access to support. This program is truly life-changing. I'm very grateful for the help I received, and I believe more people need to know about it because it can make a real difference in people's lives.

Our Mission

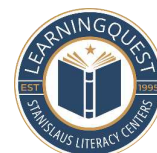
We connect communities through collaborative partnerships by continuously evolving and navigating complex systems, societal factors, and social determinants in an ongoing effort to bridge gaps, racial inequities, and disparities inherent within our community for a just and thriving Stanislaus County.

Our Vision

West Modesto Community Collaborative believes an equitable society supports the true transformation of systems, communities and lives for the betterment of future generations.



2024-2025 PARTNERS



2025 Highlights



Holiday Toy Drive

200

Total Children Served

70

Total Families Served



Food Drive

350

Total Families served



Health Fairs

2

Total Events Held

502

Total Individuals Served



2025 Financials

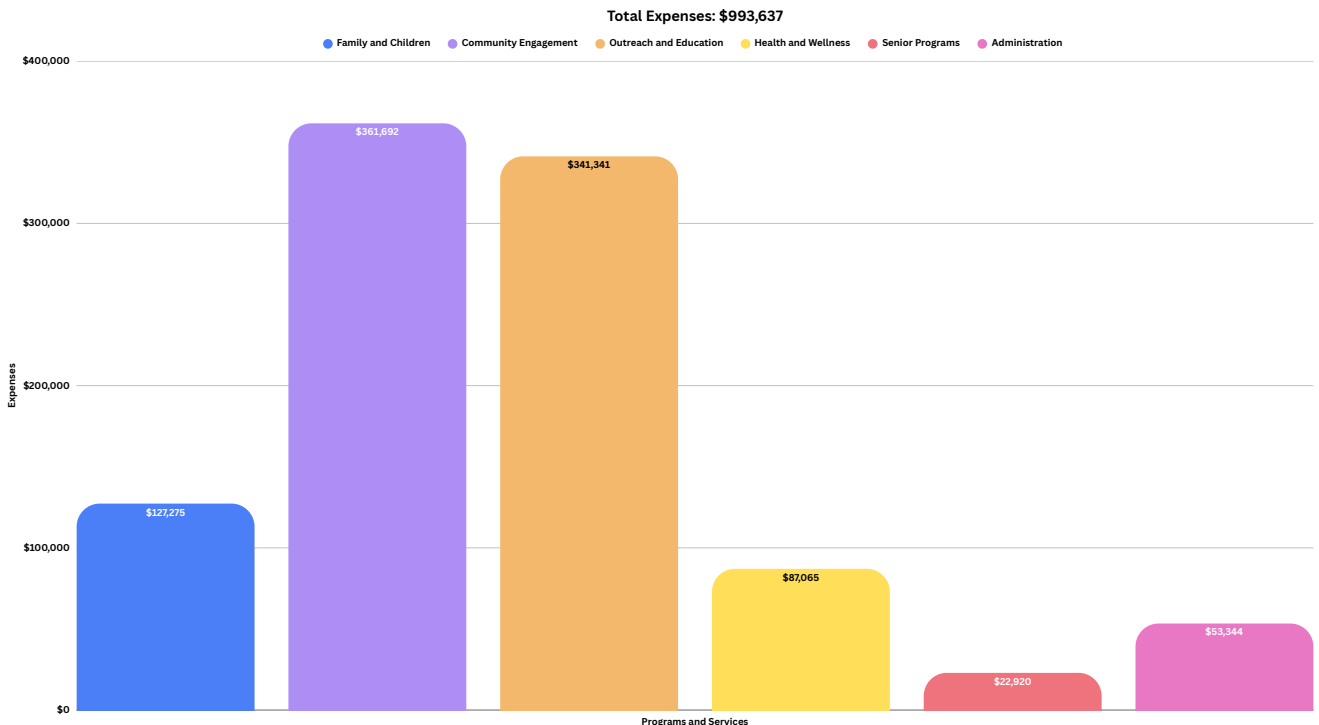
Assets

Cash Balance:	\$301,459.00
Accounts Receivable:	\$123,888.00
Prepaid Expenses:	\$8,647.00

Revenue

American Heart Association Beam	\$6,000.00	Stanislaus County - Navigation Services	\$51,567.00
City of Modesto - Health Fair	\$1,600.00	State of CA - OCPSC	\$133,433.00
Clean CA	\$1,500.00	SaveMart - Care Grant	\$5,000.00
CWOP	\$1,000.00	Stanislaus Community Fund - Civic Solution Fund	\$25,000.00
Debrief - Fresno Focus Group	\$224,775.00	Stanislaus Community Fund - Food for Families	\$10,000.00
Sierra Health Foundation - Equity on the Road & at the Mall	\$2,500.00	Stanislaus Community Fund - Mental Health Conference	\$15,000.00
Sierra Health Foundation - Food Assistance	\$5,000.00	Sutter Health - Mental Health CA Endowment	\$175,000.00
Giving Machine	\$9,925.00	American Heart Association - Tobacco Mini Grant	\$5,000.00
Health Plan of SJ - Health Fair	\$1,500.00	UC Merced	\$15,510.00
Healthnet - Health Fair	\$2,500.00	Healthnet - Wellness Center Support	\$2,500.00
SJVHF - IHHEEL Round 10	\$20,000.00	Stanislaus County - Work Force Ed	\$8,542.00
Kaiser Permanente	\$75,000.00	Fundraising and Contributions	\$19,475.00
Stanislaus County - King Kennedy Seniors	\$22,920.00		
Merced Community College	\$3,341.00		
Move your body grant	\$1,000.00		
Total Revenue:			\$959,588.00

Expenses



Ways to Give

Donating to the West Modesto Community Collaborative (WMCC) is a meaningful way to support youth empowerment, enhance mental health education, and promote vital public health initiatives. Through initiatives like the Green Room Youth Club and the People's Plan, WMCC amplifies the voices of underserved communities and provides essential resources. Every contribution, whether financial, in-kind, or as a volunteer, plays a crucial role in fostering a healthier and more equitable community. We invite you to join us in advancing well-being for all.



Volunteer

Volunteer your time, support, or your professional services.



Partnerships

Whether you're a business or community group, we welcome collaboration to grow our resources!



Fundraisers

Participate in our amazing events such as our galas, crab feeds, and much more.



Donate Online

Make a secure donation online with a one-time, monthly, or annual gift at:

westmodestocollaborative.com

Scan to learn more about ways to give.



Connect with Us

📍 601 S Martin Luther King Dr, Modesto, CA 95351

✉ adminassist@westmodestocollaborative.com

🌐 www.westmodestocollaborative.com

☎ 209.522.6902



Stay Connected!

📷 @westmodestocollaborative

📘 West Modesto Community Collaborative

🌐 West Modesto Community Collaborative

GET IN TOUCH
WITH OUR STAFF





MAKE A MEANINGFUL IMPACT WITH WMCC IN 2026

