

FIVE FOUR
Supply Co.

MTL | 62'

Fall / Winter

Twenty Twenty-Two

Catalogue

Since 1962, our family has designed and manufactured knitwear accessories for the largest brands in North America. In 2019, we evolved our business model to reflect the demands of the marketplace. **FIVE1FOUR Supply Co.** is a manufacturers brand showcasing the best of what our family-owned factory specializes in - premium knit headwear and accessories. With our 50,000 SF Canadian headquarters in Montreal, **FIVE1FOUR Supply Co.** is lead by a dynamic team consisting of veteran textile engineers, creative consumer conscious designers, senior industry leaders and outdoor enthusiasts.

FIVE1FOUR Supply Co. is sales-driven, design-focused and customer-minded. Offering full-service custom knit programs including stock blanks, branded quick-turn, full custom, embellishments and one-of-a-kind developments. We aim to help clients build value for their brands with our "Made In Canada" products.

As the world continues to evolve with unprecedented challenges, we are committed to continue to produce mindfully engineered, fashion forward and functional knitted headwear and accessories. On top of our commitment to quality, we are proud to offer the latest in Eco-Conscious Yarns. It is with passion that we continue our quest to search for more ethical and environmentally friendly solutions.



For **FIVE1FOUR Supply Co.**
"factory-direct" means keeping it
within the family.

- **MADE IN NORTH AMERICA** means quality and commitment to consumers.
- **FACTORY DIRECT** eliminates the layers between you and your supplier.
- **TARIFF FREE** allows you to protect yourself against uncertainties in pricing and deliveries.
- **QUICK TURN PROGRAMS** get what you need, ahead of time.
- **ELIMINATE AIR-FREIGHT SHIPMENT** add-ons from overseas with North America direct freight.



ICONS & SHAPES

Fall / Winter 2022

ICONS



5 gg



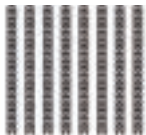
7 gg



10 gg



12 gg



RIB CUFF



FLAT KNIT



MIX YARN



4 SEAM



6 SEAM



CIRCULAR



COTTON



WOOL



FLEECE



MAGIC KNIT

SHAPES



SHORT BEANIE
 7.75"



BEANIE
 8 - 9.5"



CUFFED BEANIE
 11 - 11.5" UNCUFFED
 2.5 - 3" CUFF



TALL BEANIE
 13" UNCUFFED
 4" CUFF

INDEX

Fall / Winter 2022

ESSENTIALS.....04

**ECO
CONSCIOUS.....11**

**MOUNTAINS &
HORIZONS.....17**

OUTDOORS.....21

PATTERNS.....23

NOVELTY.....25

STATES & PROVINCES.....28

YOUTH.....31

CUSTOM.....35

COLOR PALETTE.....41

TERMS & CONDITIONS.....43

CONTACT INFORMATION...44

FALL 2022 PRE-BOOK PROGRAM DETAILS

Fall / Winter 2022

Pre-Book #1 - 10% Discount

Order by: Feb 1, 2022

Start to Ship: August 2022

Pre-Book #2 - 10% Discount

Order by: March 1, 2022

Start to Ship: September 2022

Pre-Book #3 - 5% Discount

Order by: April 1, 2022

Start to Ship: October 2022

**VOLUME DISCOUNT -
Per style per colorway**

*200 Units – 5% Off

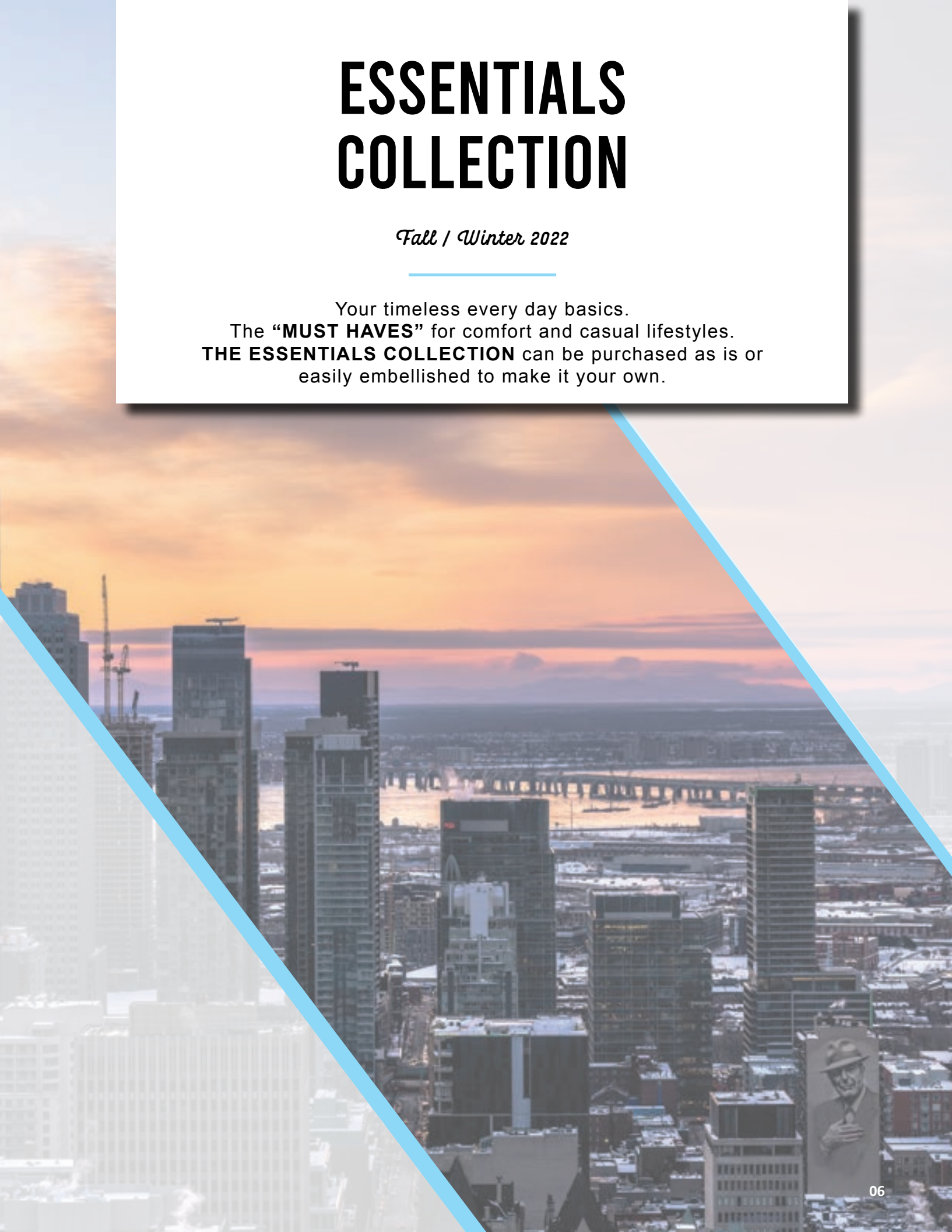
*300 Units – 10% Off

*500 Units – 15% Off

ESSENTIALS COLLECTION

Fall / Winter 2022

Your timeless every day basics.
The “**MUST HAVES**” for comfort and casual lifestyles.
THE ESSENTIALS COLLECTION can be purchased as is or
easily embellished to make it your own.



ESSENTIALS

STYLE | #906 - ATWATER

CONTENT | 100% ACRYLIC

DESCRIPTION | FINE KNIT FITTED BEANIE



STYLE | #912 - BERRI

CONTENT | 100% ACRYLIC

DESCRIPTION | RIB KNIT SLOUCH / SHORT BEANIE



STYLE | #907 - DRUMMOND

CONTENT | 100% ACRYLIC

DESCRIPTION | FINE KNIT CUFFED BEANIE



STYLE | #913 - FLEURY

CONTENT | 100% ACRYLIC

DESCRIPTION | FINE KNIT CUFFED BEANIE



ESSENTIALS

STYLE | #914 - MEILLEUR

CONTENT | 100% ACRYLIC

DESCRIPTION | RIB KNIT CUFFED BEANIE



STYLE | #920 - HOCHELAGA

CONTENT | 100% ACRYLIC

DESCRIPTION | WAFFLE KNIT CUFFED BEANIE



STYLE | #949 - MANSFIELD

CONTENT | 100% ACRYLIC

DESCRIPTION | TALL KNIT CUFFED BEANIE (9" CUFFED)



STYLE | #922 - MOUNTAIN

CONTENT | 100% ACRYLIC

DESCRIPTION | HIGH BULK CHUNKY KNIT CUFFED BEANIE



ESSENTIALS

STYLE | #803 - LEGENDRE

CONTENT | 100% ACRYLIC

DESCRIPTION | CUFFED CABLE KNIT BEANIE WITH FAUX FUR POM



STYLE | #805 - PARC

CONTENT | 100% ACRYLIC

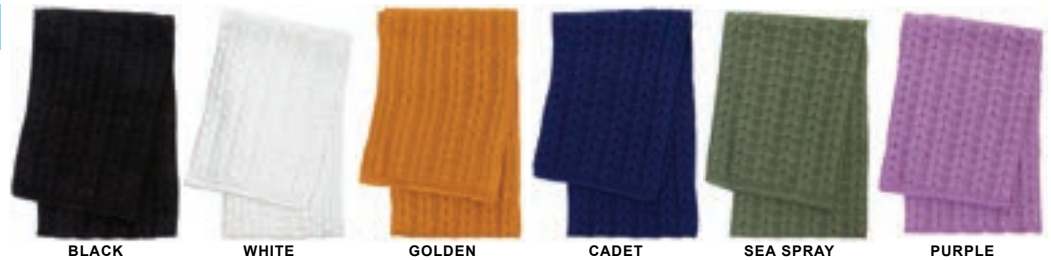
DESCRIPTION | CABLE KNIT BEANIE



STYLE | #824 - CABLE SCARF

CONTENT | 100% ACRYLIC

DESCRIPTION | CABLE KNIT SCARF
60" L X 9" W



STYLE | #940 - RIBBED SCARF

CONTENT | 100% ACRYLIC

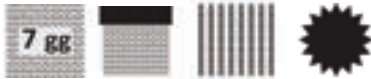
DESCRIPTION | CIRCULAR RIBBED
KNIT SCARF
60" L X 9" W



STYLE | #925 - FAIRMONT

CONTENT | 100% ACRYLIC

DESCRIPTION | RIB KNIT CUFFED BEANIE



STYLE | #926 - SHERBROOKE

CONTENT | 100% ACRYLIC

DESCRIPTION | WAFFLE KNIT CUFFED BEANIE



STYLE | #927 - MONT-ROYAL

CONTENT | 100% ACRYLIC

DESCRIPTION | TALL KNIT HIGH BULK CUFFED BEANIE (9" CUFFED)



STYLE | #550 - MITTS

CONTENT | 100% ACRYLIC

DESCRIPTION | MITTS WITH MICRO FLEECE LINER



ECO-CONSCIOUS COLLECTION

Fall / Winter 2022

Five1Four Supply Co. accepts the challenge to prioritize our inputs - particularly the research, development, and sourcing of eco friendly yarns to produce mindfully engineered, style-forward, functional, and eco-conscious products.

Our success is defined by our exploration of emerging textiles, our competitive domestic capabilities and our design-driven culture.



Whenever you see this icon, rest assured that this item has been made with the environment in mind.

Contact us for in-stock colour availability. Certifications available.

RECYCLED ACRYLIC

Recycled pre-consumer acrylic.
Composition: 30% Recycled Acrylic, 70% Acrylic



50/50

The 50-50 acrylic and wool blend makes the yarn flexible, easy to work with, and comfortable to wear. The blend is ideal for fall and winter fashion – a perfect combination of soft and warm. Easily dyeable.

Composition: 50% Merino Wool, 50% Dralon Acrylic

TENCEL™

A biodegradable fabric made of wood pulp cellulose. It is produced from branded Lyocell and Modal fibers and defines a new standard of sustainability and natural comfort. Tencel™ fibers are as soft as silk, cool as linen and as warm as wool.

Composition: 50% Tencel™, 50% Virgin Merino Wool



BLUE POLY

Recycled polyester is obtained by melting down discarded plastics and re-spinning it into new polyester fiber. The PET scraps are broken into fiber components that can then be spun into the recycled yarns. There are two main advantages to this process: Using more recycled polyester reduces our dependence on petroleum as the raw material for our fabric needs. Diverting PET bottles for this process reduces landfill, and thus less soil contamination, air and water pollution.

Composition: 100% Recycled Polyester



ECO-CONSCIOUS



REPREVE

Repreve® is the leading, most trusted, branded performance fiber made from recycled materials (including plastic bottles). Our process embeds properties like wicking, adaptive warming and cooling, water repellent, and more at the fiber level. Compared to making what's called virgin fiber, making Repreve® offsets using new petroleum, emitting fewer greenhouse gases, and conserving water and energy in the process.

Composition: 100% Recycled Polyester

STYLE | #712 - MACKENZIE

CONTENT | 100% RECYCLED POLYESTER

DESCRIPTION | FINE KNIT CUFFED BEANIE



BLACK

STYLE | #713 - VERDI

CONTENT | 100% RECYCLED POLYESTER

DESCRIPTION | FINE KNIT CUFFED BEANIE



BLACK

STYLE | #714 - COOLBROOK

CONTENT | 100% RECYCLED POLYESTER

DESCRIPTION | RIB KNIT CUFFED BEANIE



BLACK

STYLE | #715 - WESTBURY

CONTENT | 100% RECYCLED POLYESTER

DESCRIPTION | LIGHTWEIGHT RIB KNIT CUFFED BEANIE



BLACK

STYLE | #718 - JARRY

CONTENT | 100% RECYCLED POLYESTER

DESCRIPTION | WAFFLE KNIT CUFFED BEANIE



BLACK

CERTIFICATIONS



ECO-CONSCIOUS



POLYLANA®

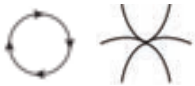
A low-impact alternative to 100% acrylic and wool fiber using less energy, water and CO2 during production. Not just different, but better. Offering brands and retailers a more sustainable choice. Consumers will enjoy the same quality, the same value, but with an additional emotion of doing better.

Composition: 60% Recycled Polyester, 40% Acrylic

STYLE | #705 - BARCLAY

CONTENT | 60% POLYESTER / 40% ACRYLIC

DESCRIPTION | FINE KNIT CUFFED BEANIE



H MED GREY

STYLE | #706 - HUDSON

CONTENT | 60% POLYESTER / 40% ACRYLIC

DESCRIPTION | RIB KNIT CUFFED MARLED BEANIE



BLACK MARLED

STYLE | #720 - BELMONT

CONTENT | 60% POLYESTER / 40% ACRYLIC

DESCRIPTION | KNIT CUFFED BEANIE WITH SELF POM



H MED GREY

CERTIFICATIONS





RECOVER

The Recover® system collects and sorts textile waste from all over the planet; cutting and shredding them to produce new fiber for the industrial spinning process. The Recover yarns contain a consistent percentage of 70% recycled cotton, blended with other materials such as polyester from PET bottles. All products made of Recover® textiles can be recycled at the end of their lives, returning into the system for a circular production loop.

Composition: 70% Regenerated Cotton, 30% Other

STYLE | #717 - ST-URBAIN

CONTENT | 75% RECYCLED COTTON / 20% RPET / 5% OTHER FIBERS

DESCRIPTION | GEO KNIT SHORT CUFFED BEANIE



LINEN

CASTELANO

TAUPE

KHAKI

STYLE | #709 - UNIVERSITY

CONTENT | 75% RECYCLED COTTON / 20% RPET / 5% OTHER FIBERS

DESCRIPTION | FINE KNIT CUFFED BEANIE



LINEN

BLACK

H LT GREY

LODEN

STYLE | #710 - MONKLAND

CONTENT | 75% RECYCLED COTTON / 20% RPET / 5% OTHER FIBERS

DESCRIPTION | RIB KNIT CUFFED BEANIE



LINEN

BLACK

H LT GREY

LODEN

CERTIFICATIONS





RECYCLED CASHMERE

Recycled Cashmere is made mostly from post-consumer garments that have been painstakingly sorted, shredded, and re-spun, allowing consumers to get a cozy luxurious blend at a wildly lower cost to the environment. Recycled Cashmere is guilt-free and just as soft. Composition 50% Recycled Cashmere, 50% Wool

STYLE | #607 - MACKAY

CONTENT | 50% RECYCLED CASHMERE / 50% MERINO WOOL

DESCRIPTION | RIB KNIT JERSEY TOP BEANIE WITH FAUX FUR POM



ROSSO



H MED GREY



BLACK



NATURAL

STYLE | #608 - OUTREMONT

CONTENT | 50% RECYCLED CASHMERE / 50% MERINO WOOL

DESCRIPTION | CABLE KNIT BEANIE WITH FAUX FUR POM



ROSSO



H MED GREY



BLACK



NATURAL

STYLE | #711 - MARLEY

CONTENT | 37% RECYCLED CASHMERE / 37% MERINO WOOL / 14% NYLON / 12% COTTON

DESCRIPTION | RIB KNIT CUFFED BEANIE



ROSSO



H MED GREY



BLACK



NATURAL

CERTIFICATIONS





LANEROSSI FILATE EYRE YARN

Manufactured with premium merino wools; synonymous with elegance, durability, and renowned for imparting unmistakable softness, stability of shape, solidity and brilliant colours to accessories. Eyre Yarn is in accordance with Woolmark standards and complies with the immuno-environmental requirements specified in international standards. Composition: 30% Recycled Wool, 50% Wool, 20% Recycled Polyester

STYLE | #701 - RACHEL

CONTENT | 80% WOOL / 20% POLYAMIDE

DESCRIPTION | SEAMLESS KNIT JACQUARD BEANIE WITH FAUX FUR POM



BURGUNDY



LT BROWN



H BLACK

STYLE | #719 - RACHEL SCARF

CONTENT | 80% WOOL / 20% POLYAMIDE

DESCRIPTION | SEAMLESS KNIT JACQUARD SCARF



BURGUNDY



LT BROWN



H BLACK

CERTIFICATIONS





LANEROSSI ^{EST. 1982} EYRE YARN

Manufactured with premium merino wools; synonymous with elegance, durability, and renowned for imparting unmistakable softness, stability of shape, solidity and brilliant colours to accessories. Eyre Yarn is in accordance with Woolmark standards and complies with the immuno-environmental requirements specified in international standards. Composition: 30% Recycled Wool, 50% Wool, 20% Recycled Polyester

STYLE | #704 - KENNEDY

CONTENT | 80% WOOL / 20% POLYAMIDE

DESCRIPTION | FINE KNIT CUFFED BEANIE



H LT GREY



IVORY



NAVY

STYLE | #722 - WESTPARK

CONTENT | 80% WOOL / 20% POLYAMIDE

DESCRIPTION | CABLE KNIT SCARF

60" L X 9" W



H LT GREY



IVORY



H BLACK

STYLE | #721 - SOLID SCARF

CONTENT | 80% WOOL / 20% POLYAMIDE

DESCRIPTION | CIRCULAR KNIT SCARF

60" L X 7" W



H LT GREY



IVORY



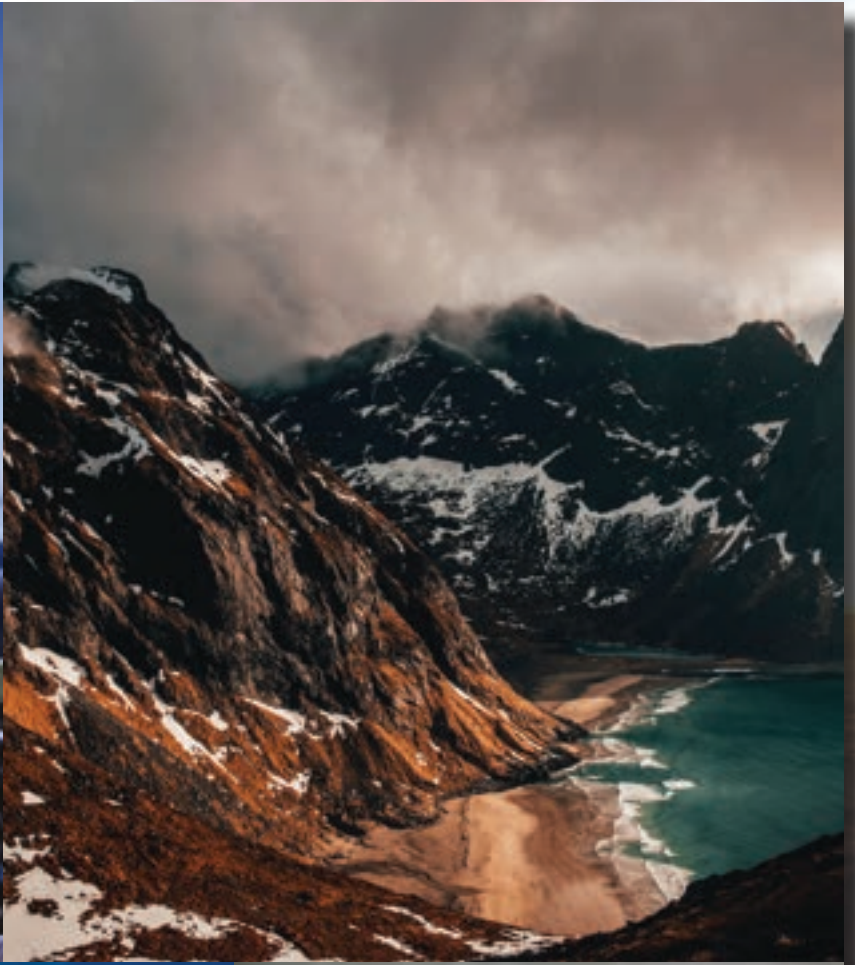
H BLACK

IN-LINE COLLECTION

Fall / Winter 2022

Our in-line program showcases the very best in styles, yarns, and colors.

The in-line program can be purchased “as is”,
or easily embellished to make it your own.
This collection has got you covered!



MOUNTAINS & HORIZONS

STYLE | #402 - CMH1 - TETON

CONTENT | 95% ACRYLIC / 5% SPANDEX

DESCRIPTION | SEAMLESS JACQUARD CUFFED BEANIE WITH POM



DENIM



ORANGE



GREY

STYLE | #402 - CMH2 - RISE

CONTENT | 95% ACRYLIC / 5% SPANDEX

DESCRIPTION | SEAMLESS JACQUARD CUFFED BEANIE WITH POM



RED



NAVY



BLACK



ORANGE

STYLE | #402 - CMH8 - MOUNT

CONTENT | 95% ACRYLIC / 5% SPANDEX

DESCRIPTION | SEAMLESS JACQUARD CUFFED BEANIE WITH POM



OLIVE



BLACK



NAVY

STYLE | #401 - CMH9 - TERRAIN

CONTENT | 95% ACRYLIC / 5% SPANDEX

DESCRIPTION | SEAMLESS JACQUARD WITH POM BEANIE



NAVY



OLIVE



BLACK

MOUNTAINS & HORIZONS

STYLE | #404 - CMH10 - SHADE

CONTENT | 100% ACRYLIC

DESCRIPTION | JACQUARD CUFFED BEANIE



BLACK



OLIVE



NAVY

STYLE | #401 - CMH6 - PEAKS

CONTENT | 95% ACRYLIC / 5% SPANDEX

DESCRIPTION | JACQUARD BEANIE



BLACK



BRIGHT BLUE



H LT GREY

STYLE | #404 - CMH11 - HORO

CONTENT | 95% ACRYLIC / 5% SPANDEX

DESCRIPTION | SEAMLESS JACQUARD CUFFED BEANIE



BURGUNDY



BLACK



NAVY

STYLE | #404 - CMH12 - GEO

CONTENT | 100% ACRYLIC

DESCRIPTION | JACQUARD CUFFED BEANIE WITH POM



DENIM



ORANGE



MINT

STYLE | #402 - C0-8 - GONDOLA

CONTENT | 95% ACRYLIC / 5% SPANDEX

DESCRIPTION | SEAMLESS JACQUARD CUFFED BEANIE



RED



DENIM



YELLOW



STYLE | #404 - C0-2 - SINGLE TREE

CONTENT | 100% ACRYLIC

DESCRIPTION | JACQUARD CUFFED BEANIE WITH POM



DK OLIVE



BLUE



BLACK



STYLE | #402 - C0-9 - PINES

CONTENT | 95% ACRYLIC / 5% SPANDEX

DESCRIPTION | SEAMLESS JACQUARD WITH POM BEANIE



BLACK



OLIVE



BURGUNDY



STYLE | #403 - C0-10 - LAKE

CONTENT | 100% ACRYLIC

DESCRIPTION | JACQUARD BEANIE WITH POM



BROWN



BLACK



FOREST



STYLE | #404 - CO-5 - DEER

CONTENT | 100% ACRYLIC

DESCRIPTION | JACQUARD CUFFED BEANIE WITH POM



ROYAL



OLIVE



GREY

STYLE | #404 - CO-11 - FAIRISLE

CONTENT | 100% ACRYLIC

DESCRIPTION | JACQUARD CUFFED BEANIE WITH POM



BLACK



NAVY



FOREST

STYLE | #403 - CO-7 - SNOW

CONTENT | 50% MERINO WOOL / 50% ACRYLIC

DESCRIPTION | JACQUARD BEANIE WITH POM & FLEECE LINER



CREAM



H LT GREY



BLACK

STYLE | #402 - CO-12 - SQUATCH

CONTENT | 95% ACRYLIC / 5% SPANDEX

DESCRIPTION | SEAMLESS JACQUARD CUFFED BEANIE WITH OR WITHOUT POM



BLUE



GOLD



LIPSTICK

STYLE | #401 - CN-3 - USA

CONTENT | 95% ACRYLIC / 5% SPANDEX

DESCRIPTION | SEAMLESS JACQUARD BEANIE



RED



H LT GREY



BLACK

STYLE | #401 - CN-4 - CANADA

CONTENT | 95% ACRYLIC / 5% SPANDEX

DESCRIPTION | SEAMLESS JACQUARD BEANIE



WHITE



RED



BLACK

STYLE | #402 - CN-6 - USA VINTAGE

CONTENT | 95% ACRYLIC / 5% SPANDEX

DESCRIPTION | SEAMLESS JACQUARD CUFFED BEANIE WITH POM



NAVY



GREY



WHITE

STYLE | #402 - CN-7 - CANADA SCRIPT

CONTENT | 95% ACRYLIC / 5% SPANDEX

DESCRIPTION | SEAMLESS JACQUARD CUFFED BEANIE WITH POM



BLACK



RED



GREY

STYLE | #402 - CN-13 - MOUNTAINS

CONTENT | 95% ACRYLIC / 5% SPANDEX

DESCRIPTION | SEAMLESS JACQUARD CUFFED BEANIE WITH POM



DENIM



CORAL



H. LT. GREY

STYLE | #404 - CN-10 - LOVE SNOW

CONTENT | 100% ACRYLIC

DESCRIPTION | JACQUARD CUFFED BEANIE WITH POM



PINK



ORANGE



ROYAL

STYLE | #404 - CN-14 - LOVE DUMPS

CONTENT | 100% ACRYLIC

DESCRIPTION | JACQUARD CUFFED BEANIE WITH POM



RED



CORAL



BABY BLUE

STYLE | #402 - CN-15 - GOGGLES

CONTENT | 95% ACRYLIC / 5% SPANDEX

DESCRIPTION | JACQUARD CUFFED BEANIE WITH POM



H. MED. GREY



H. LT. GREY



AQUA

STATES & PROVINCES

STYLE | #404 - CS-1 - COLORADO

CONTENT | 100% ACRYLIC

DESCRIPTION | JACQUARD CUFFED BEANIE WITH POM



ORANGE

STYLE | #402 - CS-2 - COLORADO

CONTENT | 95% ACRYLIC / 5% SPANDEX

DESCRIPTION | SEAMLESS JACQUARD CUFFED BEANIE WITH POM



RED

STYLE | #404 - CS-3 - COLORADO

CONTENT | 100% ACRYLIC

DESCRIPTION | JACQUARD CUFFED BEANIE WITH POM



WINTER WHITE

STYLE | #402 - CS-4 - COLORADO

CONTENT | 95% ACRYLIC / 5% SPANDEX

DESCRIPTION | SEAMLESS JACQUARD CUFFED BEANIE



NAVY

STYLE | #404 - CS-4 - NEW MEXICO

CONTENT | 100% ACRYLIC

DESCRIPTION | JACQUARD CUFFED BEANIE WITH POM



YELLOW

STYLE | #402 - CS-6 - NEW MEXICO

CONTENT | 95% ACRYLIC / 5% SPANDEX

DESCRIPTION | SEAMLESS JACQUARD CUFFED BEANIE WITH POM



TEAL

STYLE | #404 - CS-7 - WYOMING

CONTENT | 100% ACRYLIC

DESCRIPTION | JACQUARD CUFFED BEANIE WITH POM



RED

STYLE | #402 - CS-8 - WYOMING

CONTENT | 95% ACRYLIC / 5% SPANDEX

DESCRIPTION | SEAMLESS JACQUARD CUFFED BEANIE WITH POM



NAVY

STATES & PROVINCES

STYLE | #404 - CS-9 - UTAH

CONTENT | 100% ACRYLIC

DESCRIPTION | JACQUARD CUFFED BEANIE



NAVY

STYLE | #402 - CS-10 - UTAH

CONTENT | 95% ACRYLIC / 5% SPANDEX

DESCRIPTION | SEAMLESS JACQUARD CUFFED BEANIE WITH POM



GREY

STYLE | #404 - CS-11 - CALIFORNIA

CONTENT | 100% ACRYLIC

DESCRIPTION | JACQUARD CUFFED BEANIE WITH POM



BLACK

STYLE | #402 - CS-12 - CALIFORNIA

CONTENT | 95% ACRYLIC / 5% SPANDEX

DESCRIPTION | SEAMLESS JACQUARD CUFFED BEANIE



RED

STYLE | #404 - CS-13 - MONTANA

CONTENT | 100% ACRYLIC

DESCRIPTION | SEAMLESS JACQUARD CUFFED BEANIE WITH POM



BLACK

STYLE | #402 - CS-14 - MONTANA

CONTENT | 95% ACRYLIC / 5% SPANDEX

DESCRIPTION | SEAMLESS JACQUARD KNIT CUFFED BEANIE WITH POM



RED

STYLE | #404 - CS-15 - IDAHO

CONTENT | 100% ACRYLIC

DESCRIPTION | JACQUARD CUFFED BEANIE



BLACK

STYLE | #402 - CS-16 - IDAHO

CONTENT | 95% ACRYLIC / 5% SPANDEX

DESCRIPTION | SEAMLESS JACQUARD CUFFED BEANIE WITH POM



ROYAL

STATES & PROVINCES

STYLE | #404 - CS-17 - VERMONT

CONTENT | 100% ACRYLIC

DESCRIPTION | JACQUARD CUFFED BEANIE WITH POM



H. LT. GREY

STYLE | #402 - CS-18 - VERMONT

CONTENT | 95% ACRYLIC / 5% SPANDEX

DESCRIPTION | SEAMLESS JACQUARD CUFFED BEANIE WITH POM



FOREST

STYLE | #404 - CS-19 - QUEBEC

CONTENT | 100% ACRYLIC

DESCRIPTION | JACQUARD CUFFED BEANIE WITH POM



ROYAL

STYLE | #402 - CS-20 - QUEBEC

CONTENT | 95% ACRYLIC / 5% SPANDEX

DESCRIPTION | SEAMLESS JACQUARD CUFFED BEANIE WITH POM



BLACK

**STYLE | #404 - CS-21
BRITISH COLUMBIA**

CONTENT | 100% ACRYLIC

DESCRIPTION | SEAMLESS JACQUARD CUFFED BEANIE WITH POM



BLACK

**STYLE | #404 - CS-21
BRITISH COLUMBIA**

CONTENT | 100% ACRYLIC

DESCRIPTION | SEAMLESS JACQUARD CUFFED BEANIE WITH POM



NAVY

STYLE | #404 - CS-23 - ALBERTA

CONTENT | 100% ACRYLIC

DESCRIPTION | JACQUARD CUFFED BEANIE WITH POM



BLACK

STYLE | #402 - CS-24 - ALBERTA

CONTENT | 95% ACRYLIC / 5% SPANDEX

DESCRIPTION | JACQUARD CUFFED BEANIE WITH POM



YELLOW

STATES & PROVINCES

STYLE | #404 - CS-25 - ONTARIO

CONTENT | 100% ACRYLIC

DESCRIPTION | JACQUARD CUFFED BEANIE WITH POM



H. LT. GREY

STYLE | #402 - CS-26 - ONTARIO

CONTENT | 95% ACRYLIC / 5% SPANDEX

DESCRIPTION | JACQUARD CUFFED BEANIE



RED

STYLE | #404-CS-27-NOVA SCOTIA

CONTENT | 100% ACRYLIC

DESCRIPTION | JACQUARD CUFFED BEANIE



ROYAL

STYLE | #402-CS-28-NOVA SCOTIA

CONTENT | 95% ACRYLIC / 5% SPANDEX

DESCRIPTION | SEAMLESS JACQUARD CUFFED BEANIE WITH POM



BLACK

STYLE | #404 - CS-29 - NEW FOUNDLAND

CONTENT | 100% ACRYLIC

DESCRIPTION | SEAMLESS JACQUARD CUFFED BEANIE



H. LT. GREY

STYLE | #402 - CS-30 - NEW FOUNDLAND

CONTENT | 95% ACRYLIC / 5% SPANDEX

DESCRIPTION | SEAMLESS JACQUARD CUFFED BEANIE WITH POM



GREEN

STYLE | #404 - CS-31 - NEW BRUNSWICK

CONTENT | 100% ACRYLIC

DESCRIPTION | JACQUARD CUFFED BEANIE WITH POM



H. MED. GREY

STYLE | #402 - CS-32 - NEW BRUNSWICK

CONTENT | 95% ACRYLIC / 5% SPANDEX

DESCRIPTION | JACQUARD CUFFED BEANIE



ROYAL

YOUTH COLLECTION

Fall / Winter 2022

A fun and stylish collection to keep your kids warm and comfortable while enjoying their favourite activities during the cold winter months.





STYLE | #907-Y-DRUMMOND JR

CONTENT | 100% ACRYLIC

DESCRIPTION | FINE KNIT CUFFED BEANIE



STYLE | #914 - Y - MEILLEUR JR

CONTENT | 100% ACRYLIC

DESCRIPTION | KNIT CUFFED BEANIE



STYLE | #914 - Y - MEILLEUR JR

CONTENT | 100% ACRYLIC

DESCRIPTION | KNIT CUFFED BEANIE WITH POM



STYLE | #404 - Y - SNOWFLAKE

CONTENT | 100% ACRYLIC

DESCRIPTION | JACQUARD KNIT CUFFED BEANIE WITH POM



BLACK



H. LT. GREY



LT. PURPLE

STYLE | #401 - Y - STAR

CONTENT | 95% ACRYLIC / 5% SPANDEX

DESCRIPTION | SEAMLESS JACQUARD BEANIE WITH POM



DUSTY ROSE



NAVY



MINT

STYLE | #404 - Y - HEART

CONTENT | 100% ACRYLIC

DESCRIPTION | JACQUARD CUFFED BEANIE



BLACK



PURPLE



H. LT. GREY

STYLE | #401 - Y - DRIP

CONTENT | 95% ACRYLIC / 5% SPANDEX

DESCRIPTION | SEAMLESS JACQUARD BEANIE WITH POM



TEAL



PURPLE



PINK

STYLE | #402 - Y - TIE DYE

CONTENT | 95% ACRYLIC / 5% SPANDEX

DESCRIPTION | SEAMLESS JACQUARD BEANIE



BLUE



PINK



NEON

CUSTOM KNIT PROGRAM

Fall / Winter 2022

Your full-service custom solution for Canadian made knitted accessories. With minimums as low as 100 units you can create your own custom beanie, scarf or blanket with your own name, logo, or design. Select one of our styles to get started and let us make your vision come to life.

All made right here in North America

“HOW TO CUSTOMIZE YOUR KNIT”

- 🍁 Choose one or multiple styles from our large database of styles
- 🍁 Send us your logo(s), design(s) or overall vision
- 🍁 We send you a customized Five1Four art deck
- 🍁 Choose your final style(s)
- 🍁 Order a minimum of 100 units per style
- 🍁 Lead time 8 weeks



PARTNERS

FIVEFOUR
Supply Co.
MTL | 62
FALL / WINTER 2022



PARTNERS



“EMBELLISHMENTS”

- Choose one or multiple styles from our Essential or In-line collections
- Send us your logo(s), design(s) or overall vision
- We send you customized embellishment ideas
 - Choose your final embellishment(s)
- Order a minimum of 100 units per embellishment



EMBELLISHMENTS



Woven Clip Label



Woven Patch



Woven Patch With Merrowed edge



Suede Clip Label with Rubber Embossed Logo



Sublimation Patch & Merrowed Edge



Embroidered Patch with Felt & Merrowed edge



Full Embroidered Patch



PVC Patch



Faux Leather Debossed Clip Label



Faux Suede Debossed Clip Label



Faux Leather Debossed Patch



Faux Suede Debossed Patch

COLOR PALETTE

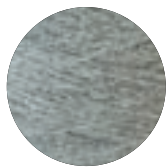
100% Acrylic



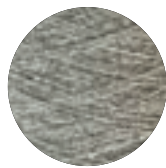
BLACK



CHARCOAL



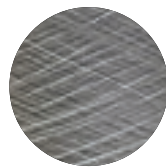
H GREY 119



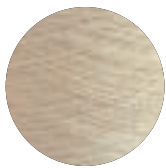
H GREY 121



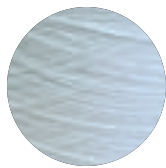
H MED GREY



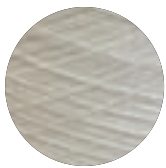
HIGHRISE



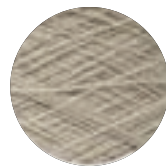
RO PRISTINE



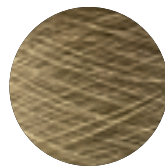
WHITE



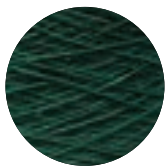
WINTER
WHITE



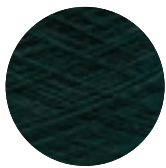
RO BIRCH



CORIANDER



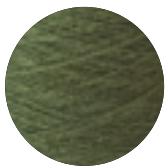
DK GREEN



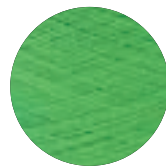
PINE GREEN



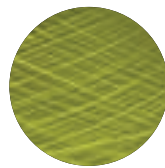
DARK OLIVE



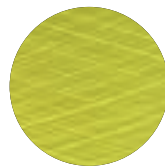
NEW OLIVE



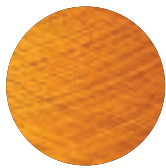
NEON
GREEN



MARGARITA



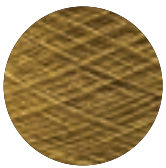
SAFETY
YELLOW



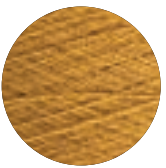
CANARY



CATHAY
SPICE



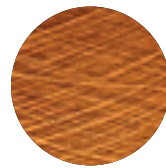
H DK GOLD



HARVEST
GOLD



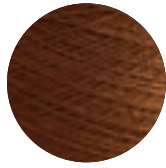
LEMON



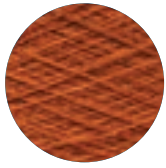
NARCISSUS



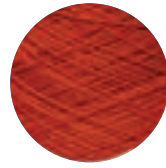
BROWN



OTTER



BT ORANGE



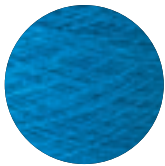
PUMPKIN



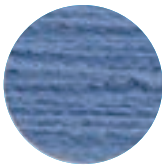
SAFFRON

COLOR PALETTE

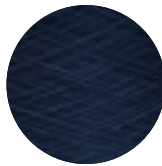
100% Acrylic



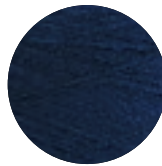
AZULE BLUE



VALOR
BLUE



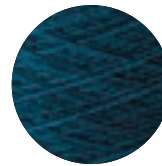
MIDNIGHT



NAVY



ROYAL



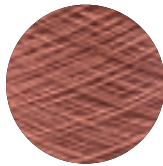
SEAPORT



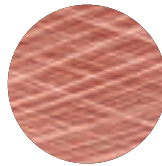
TRUE BLUE



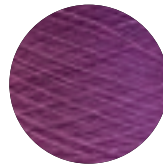
NEON
PINK



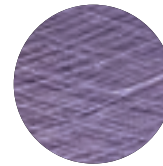
DUSTY
ROSE



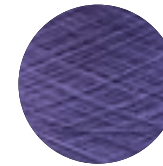
BLUSH PINK



HOLLYHOCK



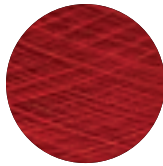
LILAC



FIELD
PURPLE



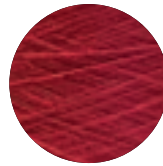
BURGUNDY



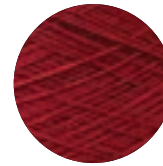
LIPSTICK



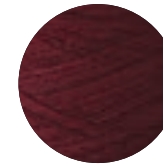
OLD RUBY



JESTER
RED

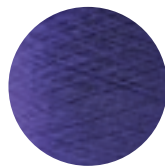


DK RED

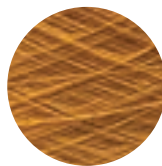


ZINFANDEL

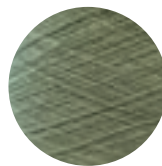
TRENDING COLORS



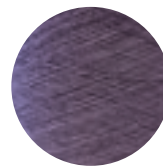
CADET



GOLDEN



SEA SPRAY



PURPLE

TERMS & CONDITIONS

- * The following digital art formats are accepted: Adobe Illustrator (.ai, .eps, pdf), Photoshop (.psd), and Vector formatted drawings. JPEG, TIFF & GIF are not considered digital art files and may be subject to additional design fees.
- * Written approval of order, embellishment design, CAD, and pre-production sample (if applicable) are required before production.
- * All Custom orders require a 50% deposit prior to production and the balance prior to order shipment. Visa, Mastercard, ACH, Wire available for payment.
- * All freight charges will be added to the customer's invoice. Shipments can be made on 3rd party accounts if the account number is provided at the time of the order placement. 514 Supply Co. is not responsible for delays in delivery due to carrier, customs, and/or other unforeseen logistical issues.
- * Orders are subject to production overages or shortfalls of up to 5% of the total order quantity.
- * Custom orders cannot be cancelled once production has begun. Any cancellation will be subject to an additional fee.
- * All visual and production art is the intellectual property of Five1Four Supply Co. and cannot be shared or used by any 3rd party without the written consent of Five1Four Supply Co.
- * Five1Four Supply Co. reserves the right to promote all products (decorated or otherwise) in any catalogue, flyer, website and/or other advertising means unless otherwise specified in writing at the time of order placement.



CONTACT INFORMATION



US Sales Team

US Sales Office
Outdoor Market Alliance (OMA)
Showroom #A25
11111 W 6th Avenue
Lakewood, CO 80215

The Phillips Group
Paul Phillips
NY, PA, VA, DC, MD
908.447.9501
jp.phillips100@hotmail.com

Landmark Services, LLC
Brian & Kelly Lecklitner
CO, NM, UT, WY, AZ
970.389.6924
leck@landmark-services.com

Tree Line Sales
Ben Phillips
VA, WV, NC, GA, FL, AL, TN, KY
908.313.5354
treelinesales@gmail.com

Sandy Bardin
AK, WA, MT, ID, OR
970.389.2455
sandybardin@me.com

Wingard Sales Group
Craig Wingard
CA, NV
530.412.3341
craigwingard@gmail.com

Clayton Inc
Danny & Steven Clayton
ME, NH, VT, MA, RI, CT
802.635.3728
stephannie@claytonincorporated.com

Andy White
TX, OK, AR, LA
512.413.8417
white802@sbcglobal.net

Janie Swanson Becker
MI, IN, OH, IL, MN, WI, ND, SD,
MN, IA, MO
612.867.0561
janieswan1@gmail.com

CONTACT INFORMATION

 **Canadian Sales Team**

FIVE1FOUR Supply Co. Headquarters
3205 Bedford Road, Montreal QC H3S 1G3
514-303-0264 / 1-833-699-1514
sales@514supplyco.com

Caton Sales
Luke Caton
Southwest Ontario
519.670.2372
luke@catonsales.com

STW Imports
Adrienne Mosse & Trif Saros
Quebec
514.365.5665
adrienne@stwimports.com
trif@stwimports.com

Gendron Sales Agency
Brian Gendron & Courtney Cullum
GTA
brian@gsasales.ca
647.225.4517
courtney@gsasales.ca
905.767.3303

FIVE1FOUR
Supply Co.

MTL | 62'

www.514supplyco.com