

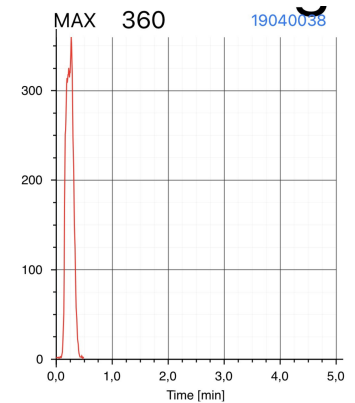
Friction assessment on new and used decent systems

The purpose of the test was to determine the difference in brake performance between a new and a used system.



1.1

4.1-tactical with a new rope was attached to a winch with a load cell in between. A 700kg test mass was attached to the connection point for the hardness. The winch lifted 4.1-Tactical until it started to slip down the rope. Maximum breaking performance was recorded to 360kg.



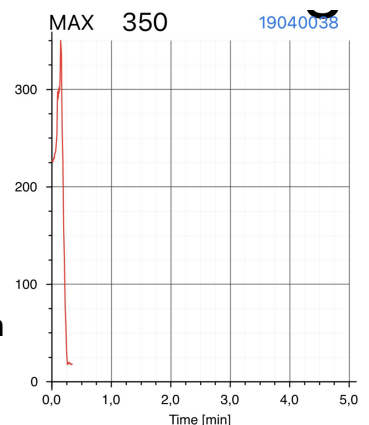
1.2

The system was connected to a winch and a test mass weighing 140kg. The winch raised the system by 100cm. The descender was used to lower the test mass down the rope to the ground. The rope was then pulled back through the descender. This process was repeated 20 times.



1.3

The rope and descender used in 1.2 was then connected the same way as in 1.1. Maximum breaking performance was recorded to 350kg.



1.4

The results indicate that there is no notable decline in braking performance with a used rope.