

**SUPPORTED BY**



Ministry of Coal  
Ministry of Mines  
Ministry of Steel  
Ministry of Power  
Department of Heavy Industries  
Ministry of Micro, Small and Medium Enterprises  
Government of India



Coal India Limited  
(A Maharatna Company)

# NEWS & UPDATES

Issue : November 2021



## 9<sup>th</sup> International Mining, Equipment, Minerals & Metals Exhibition Tuesday 15<sup>th</sup> - Friday 18<sup>th</sup> February 2022 EcoPark, Rajarhat, Kolkata, India

— CONCURRENT TO —



## 9<sup>th</sup> Asian Mining Congress Tuesday 15<sup>th</sup> - Wednesday 16<sup>th</sup> February 2022 Biswa Bangla Convention Centre, Rajarhat, Kolkata, India

**Theme:** Technological Advancements in Mining Industry: Status and Challenges

### Expected Participation

350+  
Stalls

600+  
Delegates

7+  
Country Pavilions

4+  
State Pavilions

25+  
Countries

15,000+  
Footfalls

### Group & Large Participation:



AUSTRALIA



CHINA



CZECH REPUBLIC



GERMANY



POLAND



RUSSIA



USA

### Event Sponsors

Gold Sponsor



Silver Sponsor



### Focus Countries



Connect us on:



## Exhibition Overview

- 9<sup>th</sup> in the Series - IME 2022 is a leading institutionalized biennial international exhibition of the Mining, Minerals, Metals and Machinery industries in India
- 2 Days High Level 9<sup>th</sup> Asian Mining Congress with Speakers and Delegates from over 20 Countries, who will visit and interact with Exhibitors
- Concurrent "Buyer Seller Meet" during Exhibition having presentations from Major Industry Players from the Industry
- An Ideal Platform for display and launches of new initiatives, machinery products and technologies, establishing joint ventures, developing and renewing international and regional contacts
- High Level Trade Delegations and Country Level Group Participation expected from Australia, China, Czech Republic, Germany, Poland, Russia and, UK and USA
- Large participation of leading Mining Equipment & Machinery Manufacturers expected from Asia, Africa, America and Europe
- Participation of Minerals Rich India States and PSU's, Large Corporates and Small and Medium Organisations

## Event Committees



### Pramod Agrawal, IAS

Chairman, National Advisory Committee  
9<sup>th</sup> AMC & IME 2022  
CMD, Coal India Ltd.



### P.M. Prasad

Principal Coordinator, 9<sup>th</sup> AMC & IME 2022  
President, MGMI  
CMD, Central Coalfields Ltd.  
CMD, Bharat Coking Coal Ltd.  
(Additional Charge)



### Bhola Singh

Chairman, 9<sup>th</sup> IME 2022  
Director (Technical & Operation)  
Central Coalfields Ltd.



### P.S. Mishra

Chairman, 9<sup>th</sup> AMC 2022  
CMD, Eastern Coalfields Ltd.

## Concurrent 9<sup>th</sup> Asian Mining Congress

The 9<sup>th</sup> Asian Mining Congress will be organised by The Mining, Geological & Metallurgical Institute of India (MGMI). Eminent Speakers from India and abroad will debate, deliberate and exchange views on the key issues of the mining and allied sectors. Over 600 delegates are expected to participate from over 20 countries (full details in separate brochure of MGMI)

...continued on page 4



[www.miningexpoindia.com](http://www.miningexpoindia.com)



[www.mgmiindia.in](http://www.mgmiindia.in)

## ■ Partial List of Confirmed Exhibitors

- Altra Industrial Motion
- Andritz Separation and Pump Technologies India Pvt. Ltd.
- Aqua Machineries Pvt. Ltd.
- Aquatech Pumping Solutions
- Australian Trade and Investment Commission
- Balkrishna Industries Ltd.
- Balmer Lawrie & Co. Ltd.
- BEML Ltd.
- Beumer India Pvt. Ltd.
- Bhajjanka Ispat Pvt. Ltd.
- CD Industries (Unit Kisan Engineering Works Pvt Ltd.)
- Chanderpur Works Ltd.
- CIA World
- Coal International
- Construction Mirror
- Construction Times
- Continental Group
- CRC India Manufacturing and Distributors Pvt. Ltd.
- CT Today
- Dana Brevini India Pvt. Ltd.
- Derrick Solutions India Pvt. Ltd.
- Dinamic Oil India Pvt. Ltd.
- Dynaset Oy
- Eastern Weldmesh Pvt. Ltd.
- Electro Magnetic Industries
- Elesa and Ganter India Pvt. Ltd.
- EMG Automation India Pvt. Ltd.
- Engineering Appliances
- EPC World
- Equipment Times
- EVO Bearing Ltd.
- Exousia Automotive Pvt. Ltd.
- Famur SA
- Finerock Industries
- Flow Link Systems Pvt. Ltd.
- Flsmidth Pvt. Ltd.
- G & C Valves India Pvt. Ltd.
- Galassi & Ortolani India Pvt. Ltd.
- Gautam & Company
- GHH Group
- Haver & Boecker Latinoamericana Máquinas LTDA
- Hectronic India Retail & Automation Pvt. Ltd.
- India Bearings & Mill Stores
- Indian Oil Corporation Ltd.
- Indicon Westfalia Ltd.
- Innotech Engineering
- Jha Baba Projects Pvt. Ltd.
- JM Frictech India Pvt. Ltd.
- K I Transpower Pvt. Ltd.
- Kateel Engineering Industry Pvt. Ltd.
- Keerthi Pumps India Pvt. Ltd.
- KK Alliance India Pvt. Ltd.
- Klassic Klarol Filters Pvt. Ltd.
- LCS Controls Pvt. Ltd.
- Liebherr India Pvt. Ltd.
- Maco Corporation India Pvt. Ltd.
- Matec Srl
- MBH Pumps (Gujarat) Pvt. Ltd.
- McNally Bharat Engineering Company Ltd.
- Mineral Exploration Corporation Ltd.
- Mining & Quarry World
- Mody Pumps India Pvt. Ltd.
- MyPort Services India Pvt. Ltd.
- Nanda Millar Company
- NMDC Ltd.
- Orbinox India Pvt. Ltd.
- Orione Hydraulics Pvt. Ltd.
- Petrolabs India Pvt. Ltd.
- Phoenix Conveyor Belts India Pvt. Ltd.
- PRD Rigs India Pvt. Ltd.
- Premium Transmission Pvt. Ltd.
- Prerak Enterprise
- Projects Mirror
- Promac Engineering Industries Ltd.
- Redline Communications
- Reutech Mining
- Revathi Equipment Ltd.
- Ringsfeder Power Transmission India Pvt. Ltd.
- Ringspann Power Transmission India Pvt. Ltd.
- Rocscience Inc
- Roto Pumps Ltd.
- Sensitive Forge
- Skylark Drones Pvt. Ltd.
- Steel & Metallurgy
- STM Construction Equipment India Pvt. Ltd.
- Takraf India Pvt. Ltd.
- Tata Hitachi Construction Machinery Company Ltd.
- Tecknoweld Alloys India Pvt. Ltd.
- Thejo Engineering Ltd.
- Trade and Investment Queensland (TIQ), Government of Queensland, Australia
- Usha Martin Ltd.
- V Engineering Enterprises
- Vas Tribology Solutions Pvt. Ltd.
- Vautid India Pvt. Ltd.
- VDMA India Services Pvt. Ltd.
- VEGA India Level and Pressure Measurement Pvt. Ltd.
- Voith Turbo Pvt. Ltd.
- V-Tork Controls
- World Coal
- World Expo International Sp. z o.o.
- 99 Product Today

## ■ Exhibiting Profile

- Coal Producers
- Coal Beneficiation & Mineral Dressing Equipments
- Mining and Construction Machinery Manufacturers
- Pumps, Gears, Valves and Compressors
- Power Generation and Transmission
- Material Handling, Logistics and Communication
- Tyres Manufacturers
- Mineral Processing Plants and Equipments
- Lubricants, Greases and Oils
- Automation and Instrumentation
- Diesel Engines & Electrical Engines
- Motors and Generators
- Weighing and Monitoring Solutions
- Mineral Rich State Governments
- Other Minerals and Metals Producers
- Water Treatment Solutions
- Chemicals and Explosives
- Health, Safety & Security
- Components and Spare Parts
- Cement Manufacturers
- IT in Mine Planning & Surveying
- R&D Institutions, Consultants
- Importers and Exporters

## ■ Visitors Profile

- Coal Consumers / Producers
- Mining, Logistics, Shipping and Fright Companies
- Policy Makers
- Central and State Sr. Government Officials
- Equipment Buyers & Suppliers
- Fuel Suppliers
- Project Developers
- Entrepreneurs
- Investors, MNC's, Industrialist and Traders
- Importers and Exporters
- Engineers and Professional
- Trade Delegations
- Research Scholars
- Bankers and Financial Institutions
- Legal and Management Consultants
- Chief Executives / Decision Makers
- Consultants
- R&D Professionals
- Academicians
- Foreign Missions
- Industry Associations
- Infrastructure Development Organizations
- IT Companies and Solutions Providers

## ■ Concurrent Asian Mining Congress

### Lead Topics:

- State-of- the-Art Exploration Geosciences and Evaluation Techniques
- Challenges in Deep Underground Mining and Mass Production
- Recent Advancements in Opencast Mining
- Mine Mechanisation and Automation
- AI/ML, Digitalisation and Smart Mining
- Policies and Planning for Development of Minor Minerals
- Offshore and Deep Sea Mining
- Breakthroughs in Oil and Gas Sector
- Coal based Unconventional Energy Resources viz. CBM, Shale Gas, SCG, UCG and Methanol Economies to Supplement Energy Demand
- Mineral / Coal Processing, Beneficiation and Extractive Metallurgy including By-product Recovery
- Green Technologies in Mineral Industry
- Environment, Health and Safety Management
- Innovative Technologies: Case Studies
- Roadmap for Start-ups and Creation of Investment Opportunities in Mineral Sectors

**Theme: Technological Advancements in Mining Industry: Status and Challenges**

**Contact:** [office@mgmiindia.in](mailto:office@mgmiindia.in) / +91-33-23573987

## Product and Company Profiles of Few of the Exhibitors

### ANDRITZ SEPARATION AND PUMP TECHNOLOGIES INDIA PVT. LTD.



ANDRITZ SEPARATION is the world's leading separation specialist with the broadest technology portfolio and more than 2,000 specialists in 40 countries. For more than 150 years we have been a driving force in the evolution of separation solutions and services for industries ranging from environment to food, chemicals and mining & minerals. As the OEM for many of the world's leading brands, we have the solutions and services to transform your business to meet tomorrow's changing demands – wherever you are and whatever your separation challenge.

#### Sustainable Growth Through Smarter Separation Solutions:

With the world's most comprehensive portfolio of solid/liquid separation technologies, ANDRITZ is well positioned to provide the right solution for any type of mechanical or thermal separation challenge.

It all starts with our customers' specific process requirements, and ends with a system that brings the best results – day in and day out, for decades to come.

#### The Right Solution for Every Separation Challenge:

##### Mining & Minerals:

Discover the industry's most efficient and reliable separation solutions for Iron ore concentrate slurry, Iron ore tailings, Coal concentrate, Coal middlings, Coal fines, Coal tailings, Gold ore, Zinc Smelters, Chrome ore, Bauxite, Precipitated calcium carbonate (PCC), FGDs, Potash, Precious Metals and more.

##### HYPERBARIC DISC FILTER

###### Features:

- Highest throughput per machine among all dewatering technologies
- Lowest moisture content for Iron ore
- Lowest OPEX for Iron ore dewatering plant
- Reliable and fully automatic operation



##### HORIZONTAL VACUUM BELT FILTERS

###### Features:

- Relatively highest washing efficiency
- Patented angled filter concept
- Bowed rollers to ensure completely flat filter cloth
- Pneumatic lifting and lowering device of vacuum boxes
- Unique tracking mechanisms
- Effective filtration area of up to: 224 m<sup>2</sup>



##### MINING FILTER PRESS

###### Features:

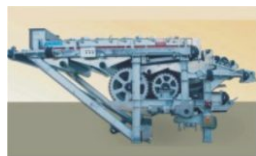
- Up to 200 TPH per machine
- Fast opening and closing of filter pack
- Travelling shuffle (Hydraulic closing system) on the Filter Press Machine
- In-situ – Cloth washing arrangement
- Self-interlocking of the shuffle
- Short cycle time – high throughput
- Unique Feeding Port



##### HEAVY DUTY BELT FILTER

###### Features:

- Effective filtration area
- B-10 bearing life
- Frame size and moment of inertia to achieve higher belt tensioning with lower maintenance cost
- Longer overall life-time of filter press(over 20 years)
- High pressure zone configuration
- Approved pressure design to achieve highest cake solids
- Dual perforated rollers for maximum drainage in pressure zone (78% opening)



- Automatic belt tracking and tensioning

##### CENTRIFUGE DECANTERS

###### Features:

- Combines sedimentation and filtration
- Low product moisture
- High tonnage in compact design
- Dewatering and washing in one machine
- Plus benefits of solid bowl centrifuge



##### FULLY AUTOMATIC FILTER PRESS

###### Features:

- Effective cake discharge without shaking of filter plate or filter cloth
- Fully automatic and well proven design
- Efficient cloth washing without back flow of dirty water into the cleaned area
- 7 to 50 bar operating pressure
- Easy to operate and maintain
- Control for entire dewatering system



##### Contact

Email: [sudhir.sugirtharaj@andritz.com](mailto:sudhir.sugirtharaj@andritz.com)

Email: [separation.in@andritz.com](mailto:separation.in@andritz.com)

Website: [www.andritz.com](http://www.andritz.com)

### AQUA MACHINERIES PVT. LTD.



Ahmedabad based ISO 9001 accredited, reputed manufacturer of "AQUA" brand of Dry Motor Submerged Mine Pumpsets for Dewatering, Slurry, Dredging, Drainage, Effluents, Sewage, Storm Water, Drainage, Raw Water etc. applications

The present Aqua manufacturing range covers Submerged Centrifugal Pumps, Storm Water Pumps, Industrial Waste Water Pumps, Mines Dewatering, Slurry and Dredging pumps, Raw Water Amphibious pumps up to 600 hp in 380/550/440 V & 2000 HP in 3.3 / 6.6 kV motor rating, Head upto 300 mtr. These pumps are available in standard execution for permanent installation, portable execution on skirt base and horizontal / vertical execution for permanent installation in Dry pit also. These Aqua Submerged products are manufactured according to the international standards at Aqua Works equipped with elaborate manufacturing and testing facilities.

#### Heavy Duty, High Head & Low Maintenance Submerged Mine Dewatering Pumpsets

##### Contact

Email: [arm@aquapumps.com](mailto:arm@aquapumps.com)

Website: [www.aquapumps.com](http://www.aquapumps.com)



### BEML LIMITED



BEML LIMITED is a leading multi-technology and multi location Mini Ratna Category – I Company under the Ministry of Defence. The company manufactures high quality products for diverse sectors of economy such as defence, coal, mining, steel, cement, power, construction, irrigation, road building, metro, railways and aviation.

BEML has its operation under three distinct business verticals: Defence & Aerospace, Mining & Construction and Rail & Metro. Over the years, BEML has demonstrated its engineering strengths and technical expertise by harnessing state-of-the-art technologies.

In Mining & Construction verticals BEML produces various machines including, Dump Trucks, Bulldozers, Hydraulic Excavators, Wheel Loaders, Wheel Dozers, Water Sprinklers, Motor Graders, Tyre Handlers for mining sector.

## Product and Company Profiles of Few of the Exhibitors (continued...)

Under 'Make in India' initiative, in Mining & Construction vertical BEML developed high-end latest technology electric dump trucks (BH150E & BH205E), Bulldozer (BD475-1) and Electric Hydraulic Excavator (BE1800E) for Mining Sector.

With a commitment to market driven R&D, BEML has successfully rolled out over 40 value-added products. In-house R&D took many initiatives for design and development of high technology products, aggregates and up-gradation of existing products in all business verticals.

The company has state-of-the-art manufacturing facilities at Bangalore, Kolar Gold Fields, Mysore and Palakkad. All these units have sophisticated facilities like CNC machines, hi-tech welding equipment and flexible manufacturing system to turn out cutting-edge-technology products.

BEML's nationwide network of sales offices enables buyer's access to its wide range of products. BEML full-fledged service centres and part depot offer total equipment care. The company site engineers ensure higher availability of machines through prompt after-sales-service.

### BH150E REAR DUMP TRUCK

Engine Gross Power: 1875 HP (1398 kW)

Maximum Payload : 136 MT (150 US ton)

BH150E Engineered with AC Electric Drive system with increased power density, enhanced reliability, greater efficiency and lower maintenance of the Alternator and Traction Motors. Traction Motors are driven by IGBT module which enables continuously variable speed and near constant horse power at wheels thereby ensuring faster travel speeds under varying operating conditions. Ideally located spacious ROPS cabin with ergonomically designed operator seat and controls and Air condition system offers maximum comfort and operation ease. Orbitrol full time power steering & shorter turning radius provide higher manoeuvrability. Full hydraulic brake actuation system is provided as standard feature.



### BH205E REAR DUMP TRUCK

Gross Power : 2300 HP (1716 kW)

Maximum Payload : 186 MT (205 US ton)

BH205E is engineered with AC Electric Drive system with increased power density, enhanced reliability, greater efficiency and lower maintenance of the Alternator and traction motors. Traction Motors are driven by IGBT module which enables continuously variable speed and near constant horse power at wheels thereby ensuring faster travel speeds under varying operating conditions. Ideally located spacious ROPS cabin with ergonomically designed operator seat and controls and Air condition system offer maximum comfort and operational ease. Orbitrol full time power steering & shorter turning radius provide higher manoeuvrability. Full hydraulic brake actuation system is provided as standard feature.



### BE1800E ELECTRIC HYDRAULIC EXCAVATOR:

- 2 x 300 kW induction Motor drive for emission free working environment
- Positive control Hydraulics for optimum use of motor power and reduction in hydraulic loss
- Closed loop swing system with swing priority improves the cycle time and productivity of the machine.
- Aesthetically improved spacious cabin provides fatigue free comforts and excellent all-round visibility to operator.



### Contact

Email: mpa@beml.co.in

Website: www.bemlindia.in

## BEUMER GROUP

BEUMER Group is an international manufacturing leader in intralogistics in the fields of conveying, loading, palletising, packaging, sortation and distribution technology including Baggage Handling System.



Our area of activities ranges from systems for bulk material and piece good transport, packaging and palletising technology for food and building materials to solutions for

mail-order business, post applications and baggage handling.

Since 1935, BEUMER Group has provided exceptional solutions, helping our customers streamline their operations to maximise productivity and profit. Together with all its subsidiaries, BEUMER Group employs more than 4,000 people and has equipment and systems operating in more than 70 countries worldwide. BEUMER maintains subsidiaries and representatives on all continents to ensure local availability for customer contact and optimum service.

The company's mission statement **"We are looking for the long term success and not the short-term profit"** has proven to be right in the past and remains the company's guideline for the future, allowing for manageable growth in the global marketplace.

Our area of activities ranges from systems for bulk material and piece good transport, packaging and palletising technology for food and building materials to solutions for mail-order business, post applications and baggage handling.

We are a competent global service partner, backed by a worldwide customer support network

### Contact

Website: www.beumergroup.com

## BHAJJANKA ISPAT PVT. LTD.



**Bhajnanka Ispat Pvt Ltd**  
Endless Industry . We focus on beneficiation

"We would like to introduce ourselves as BHAJJANKA ISPAT Pvt. Ltd. (BIPL), India, which is a diversified Engineering Company and manufacturer of PU Screen Panels, PU Liner, Belt Scraper, Impact Pad, Hydro cyclones (utilized in the classification of particles in Comminution circuits), PU Rollers, Wheel for Mining, Mineral Processing and Construction Industries. BIPL is the supplier of wear and abrasive resistant PU/ Rubber/ PE solution for Bulk Material Handling, PU/ Rubber with Ceramic Liner & Slurry Pumps (Lined- Metal, Rubber, PU).

### HYDROCYCLONES FOR MINERAL SEPARATION

- Size Range Available- 4" to 30"

Please consult for technical specification

### HI PERFORMANCE SLURRY PUMPS

- Size range Available- 3"/2" to 10"/8"
- Parts Availability- Hi Chrome/ PU/ Rubber

Please consult for technical specification

### FLIP FLOP PANELS

- Size Available- 1500 mm-3000 mm Length
- Aperture- As per your Requirement

Please consult for further details

### POLYURETHANE DEWATERING PANELS

- Sizes Available- 300\*300, 600\*300, 900\*300, 1200\*300
- Aperture- As per your requirement

Please consult for customisation and further details

### BELT SCRAPER

- Available Sizes- 500mm-1800 mm belt Width
- MOC-PU, Carbide Tips

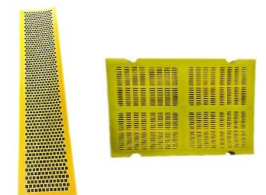
Please consult for further details

### Contact

Email: bhajjankaindustries@gmail.com

Email: vikashsinghal@bhajjanka.com

Website: www.bhajjankaispatpvtltd.com



**CHANDERPUR WORKS PVT. LTD.**



Manufacturers & exporters of cement plants, mineral processing equipments, fertilizers plants (ssp & npk), fgd projects, biomass gasifiers, coal gasifiers, paper plants, lime plants & material handling equipments.

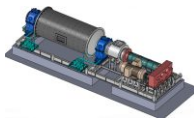
Our equipment's are well renowned and our prowess to provide the explicit, process associated, robust and cost effective grinding solutions give us the competitive edge over others. Some of our other key products consist of hammer mills, roller crushers, rotary kilns, dryers, drum scrubbers, rotary lump breaker, air classifiers, separators, pressure vessels, heat exchangers, conveyors, screw conveyors, bucket elevators along with heavy & complicated fabrication for the plants.

With complete in-house design manufacturing and inspection & testing facilities and innovation, we provide timely completion of the projects. We use all the latest software like oracle erp system for smooth management work flow and solid works, drive works, auto cad, stad for the design department.

**BALL MILLS:**

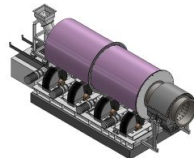
Our Ball Mill is highly advanced and specifically engineered for both wet and dry grinding applications.

- 450+ installations
- Robust & Reliable Design
- Easy Maintenance & Operation
- Fully automated system with PLC control & Instrumentation



**CENTRE DRIVE BALL MILL:**

Very easy to maintain as it requires no Grease Spray system. The gearbox is 'flanged', meaning it has no direct contact with the mill foundation. So, mill movements have no effect on the gearbox teeth.



**DRUM SCRUBBERS:**

Rubber Tyre Drive drum scrubbers are a reliable solution for washing contaminated bulk material and industrial materials, and for preparing ores for beneficiation plant in wet process.



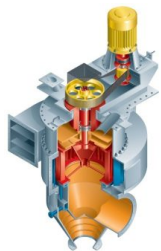
**ROTARY LUMP BREAKER:**

Rotary lump breaker with pneumatic rubber tyre drive are used in technologically advanced "Metal Recovery Plant" in Steel Industry.



**ROTARY DRYER:**

It is a continuously operated, direct contact Dryer. It consists of a slowly revolving cylindrical shell that is typically inclined to the horizontal a few degrees. The wet material is dried with the help of hot gases that may be generated in an external furnace.



**AIR CLASSIFIER:**

Classifier is based on the natural laws of centrifugal, gravitational, and flow forces. These principles are used to bring about the classification in elements of different sizes.

**Contact**

Email: sales.mp@chanderpur.com

Website: www.chanderpur.com




**CONTINENTAL CONVEYING SOLUTIONS**



**Continental Conveying Solutions**

We are the leading expert for conveyor belt solutions offering customers worldwide the most complete and advanced product, technology and service portfolio for industry and mining applications. We support our customers, partners, and distributors with a growing range of value-added services along the entire lifetime of a conveyor belt operation, from planning and commissioning, to technical advice, training, digital monitoring, and on-site maintenance. Our cost-effective, sustainable, safe and innovative conveying solutions reduce downtimes through state-of-the-art monitoring and predictive maintenance. We support mining, construction and plant engineering projects around the world as development partner.

Customers benefit from an experience of more than 140 years in high-performance conveyor belts. A network of 1,300 experienced service technicians covers key regions including Africa, Asia, Australia, Europe, North America, and Latin America. With this unique expertise and global footprint, Continental is close to its customers providing not only high-quality, long-life products, but also comprehensive support and service – tailored to customers' specific needs and requirements.

**Phoenix conveyor belts become Continental while remaining strongest**  **PHOENIX**  
Extreme Conveyor Belt Solutions  
steel cord belts.

Since January 2021, all products manufactured in Phoenix Conveyor Belt India Pvt. Ltd are marketed under the Continental brand. For customers this means more simplicity, availability and know-how around the globe.

Continental Phoenix Phenocord, the world's strongest belts. Continental Phoenix Phenocord conveyor belts are available up to a breaking strength of 10000 N/mm and a width of 3200 mm. Belts can be manufactured in lengths weighing up to an incredible 60 metric tons. With decades of experience and outstanding research and development, Phoenix Phenocord belts have been proven to handle the most extreme conveyor belt applications.

ContiPipe® and MegaPipe® conveyor belts with fabric and steel cord carcasses can negotiate tight curves. They are the perfect solution for complex infrastructural and geographical terrains, which may have centre distances similar to common long-distance conveyors (10 km and more). With such closed-troughed conveyor belts the environment is reliably protected from the bulk material.

Continental offers a wide range of monitoring systems and monitoring services to take your efficiency to the next level. With damage detection, wear measurements and cover damage mapping, Continental supplies you with important data to help keep your operation up and running.

Continental supplies a wide range of special underground one or two-ply conveyor belts (e.g. standard PVG and PVC belts), one or two-ply fabric belts - CONTITAN®. All these belts are manufactured with self-extinguishing rubber compounds (e.g. Shield family) and meet strict national and international standards for underground conveyor belts.

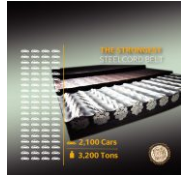
Continental Eco Series – "Eco Plus or Eco extreme" reduces significantly indentation rolling resistance (IRR) and offers the possibility to minimize your capital expenditure and operation costs. The power consumption can be reduced up to 30 %. (depending on the conveyor system).

Continental ContiClean® non-stick solution offers superior material release for everything from coal to iron ore, that helps increase your productivity while reducing operational costs.

**Contact**

Email: harsh.kumar.singh@continental.com

Website: www.continental-industry.com



**CTC IMPEX (INDIA) PVT.LTD.**

ISO 9001 & CE Certified



CTC IMPEX (INDIA) PVT LTD is established in the year 1995. Since last 25 years our company has grown into one of the leading manufacturers and exporter of bearings Worldwide.

CTC IMPEX (INDIA) PVT. LTD.

We are proud of our skilled workforce in making only the highest quality products and supplying the same to our valued customers that reflects our commitment to customer satisfaction.

CTC IMPEX (INDIA) PVT LTD is a certified master distributor of Indian origin KDM Precision Bearing and Exclusive certified importer of KYK (Made in Japan) bearings. Also we are the Importers of FAG, SKF, TIMKEN, RHP, NSK, NTN, KOYO, INA, IKO and many others popular brands of bearings in bulk quantities from duty free country.

Our warehouse maintains a huge stock of JUMBO sized Bearings, Sleeves, and Plummer/Pillow blocks, Hydraulic Nuts, and Pumps.

Over 750 paper mills, we also supply in major industries like Sugar, Cement, Steel, Stone Crusher, Mining, Agro, Automobile & Earth Moving Equipment Bearings.

A ball bearing is a type of rolling-element bearing that uses balls to maintain the

separation between the bearing races. The purpose of a ball bearing is to reduce rotational friction and support radial and axial loads. It achieves this by using at least two races to contain the balls and transmit the loads through the balls

A rolling-element bearing, also known as a rolling bearing, is a bearing which carries a load by placing rolling elements (such as balls or rollers) between two bearing rings called races. The relative motion of the races causes the rolling elements to roll with very little rolling resistance and with little sliding.

Sleeve bearings consist of a metal, plastic or fiber-reinforced composite sleeves that reduce vibrations and noise by absorbing friction between two moving parts using a sliding motion. Sleeve bearings offer several advantages, including lower cost, less maintenance, greatly reduce noise at low speeds and easier installation.

A pillow block bearing (or plummer block) is a pedestal used to provide support for a rotating shaft with the help of compatible bearings & various accessories. The assembly consists of a mounting block which houses a bearing. The block is mounted to a foundation and a shaft is inserted allowing the inner part of the bearing / shaft to rotate he inside of the bearing is typically 0.001 inches (0.025 mm) larger than the shaft to ensure a tight fit

A needle roller bearing is a special type of roller bearing which uses long, thin cylindrical rollers resembling needles. Ordinary roller bearings' rollers are only slightly longer than their diameter, but needle bearings typically have rollers that are at least four times longer than their diameter. Like all bearings, they are used to reduce the friction of a rotating surface. Compared to ball bearings and ordinary roller bearings, needle bearings have a greater surface area in contact with the races, so they can support a greater load.

The Hydraulic Nut is a permanent fixture, replacing the conventional nut and retaining the high bolt load and extension in small space envelopes where there may not be sufficient space to use tensioners. The nut can be retrofitted to existing plant and is a simple and accurate solution to mechanical jointing problems.

Induction heaters (D) are the modern, efficient and safe way to heat bearings. In operation, they are generally faster, cleaner, more controllable, and easier to use than other heating methods.

Lubrication is one of the most important factors determining bearing performance. The suitability of the lubricant and lubrication method have a dominant influence on bearing life.

**Functions of lubrication :**

- To lubricate each part of the bearing, and to reduce friction and wear
- To carry away heat generated inside bearing due to friction and other causes
- To cover rolling contact surface with the proper oil film in order to prolong bearing fatigue life
- To prevent corrosion and contamination by dirt



**OUR PRESENCE**

- MUMBAI • GUJARAT • MAHARASHTRA • RAJASTHAN • UTTAR PRADESH
- UTTARAKHAND • MADHYA PRADESH • TAMILNADU • UAE • KENYA • EGYPT
- BANGLADESH

**OUR CORE CLIENTS**

- INDIAN RAILWAYS • SATIA INDUSTRIES • KHANNA PAPER • SUBAM PAPER
- RUSHAB PAPER • STAR PAPER • BILT • BINANI GROUP • EMAMI GROUP
- BINDAL GROUP • GVG GROUP

**Contact**

Email: bearingin@yahoo.com

Website: www.ctcbrg.com

**DERRICK CORPORATION**



Derrick is a family-owned and operated company with a global presence focused on pioneering fine-separation technology. For nearly 70 years, Derrick® Corporation has been leading the industry in the design and manufacture of patented high-frequency vibratory screening machines and screen surfaces. With a pioneering spirit driving innovative solutions, Derrick is continuously in the forefront advancing the field of fine particle and solid-liquid separation technology. Known worldwide for their high-capacity and superior separation efficiency, Derrick products allow processors to screen a wide variety of wet or dry fine materials in the range of 6.2 mm to 38 µm.

In 2019, Derrick redefined high capacity, high efficiency, fine particle wet screening with the introduction of the SuperStack®. With 8 decks operating in parallel and innovative Front-to-Back (FTB) tensioning system, the SuperStack has a demonstrated capacity up to 3 times that of the best fine screens currently available. All of this added capacity comes with only a slight increase in the space required per machine, significantly reducing the total capital and installation cost as well as OPEX for any screening installation.

Derrick's global family – comprised of employees, sales representatives, and distributors – are strategically positioned worldwide to provide superior service and technical support.

**SUPER STACK®:**

Derrick Corporation has once again redefined high capacity, high efficiency, fine particle wet screening with the introduction of the SuperStack®. With 8 decks operating in parallel and innovative Front-to-Back (FTB) tensioning system, the SuperStack has a demonstrated capacity up to 3 times that of the best fine screens currently available. All of this added capacity comes with only a slight increase in the space required per machine, significantly reducing the total capital and installation cost as well as OPEX for any screening installation.



**STACK SIZER®:**

The Derrick Stack Sizer® redefines fine particle wet screening, offering high capacity and exceptional efficiency in minimal space. Consisting of up to five individual screen decks positioned one above the other and operating in parallel, the Stack Sizer provides a unique combination of high capacity and efficiency that sets the Stack Sizer far above the nearest competition. Operators worldwide are using the Stack Sizer in a wide variety of applications and capitalizing on the numerous benefits of these remarkable machines to earn significant returns.



**REPULP SCREEN:**

The Derrick Repulp Wet Sizing Screen is the solution for difficult to screen materials that require the Oversize product fraction to meet tight quality specifications. The Repulp machine's high speed, low amplitude motion coupled with its countercurrent spray wash water system effectively removes fine particles. It has a long history of producing high value products for numerous industrial mineral and precious metal industries. Numerous machines can be found worldwide screening silica sand, feldspar, coal, iron ore, gold ore and many other materials.



**LINEAR MOTION MACHINES:**

Derrick Linear Motion machines have a long history of performing in trash screening and wet scalping applications. When fitted with high g-force Derrick vibrators and fed thickened slurry, typically from hydrocyclone underflow, the Linear Motion machines perform a dewatering function that enhances the removal of free liquid from the oversize solids. Derrick Fines Recovery Systems utilize this combination of small diameter hydrocyclones and Linear Motion machines to recover and dewater solids as fine as 325 mesh (45 microns). Numerous systems can be found operating in sand, aggregate, coal, concrete, graphite dewatering applications worldwide.



**MULTI-DECK DRY SIZER:**

Derrick's newly developed Multi-Deck Dry Screen is the high capacity, highly efficient dry fine screening machine in the world. Consisting of up to four decks, the Multi-Deck screening machine – with linear motion action produced by dual SG3 high speed low amplitude vibratory motors – and with Derrick's high open area, non-blinding dry urethane screen surface technology, which is available in the size range from 5.3 mm down to 104 micron, has redefined the concept of dry fine screening. With ever-growing demand of high capacity and efficient dry screen, Multi-Deck Screening machine, coupled with highly innovative Polyweb screen technology will be the wave of the future for fine dry

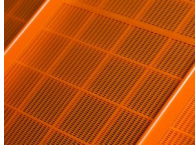




screens.

**POLYWEB® SCREENS:**

The development of fine mesh, high open area, urethane screen surfaces is perhaps one of Derrick's most notable contributions to the science of fine particle separations for both wet and dry applications. While all urethane screen panels are well known for their abrasion resistance, only Derrick Polyweb® screens combine long life with high open area, capacity, and performance rivaling that of conventional woven wire screens. It's not uncommon for Derrick urethane screens to last 6 to 12 months – 10 to 15 times longer than conventional woven wire panels. They are also lightweight and easy to install. With openings as fine as 325 mesh (45 µm) and open areas ranging from 30 to 40 percent. Processing plants throughout the world have demonstrated significant cost savings through the use of Polyweb screens.



**Contact**

Email: ashukla@derricksolutions.com  
 Website: www.derrick.com



**DINAMIC OIL INDIA PVT. LTD.**



Dinamic Oil India Pvt. Ltd. is a 100% subsidiary of Dinamic Oil S.p.A, Italy. Established in India in the year 2008 closer to the capital of the country (Near Delhi) to cater to the needs of the Indian subcontinent, as well as exporting to different countries. We have offices in key locations across the country & state of art manufacturing facility to meet the market needs.

The India Operations can deliver complete solutions from design to execution while supporting customers in the product definition, selection and design.

Dinamic Oil S.p.A, was established in year 1970 and after more than 45 years it constantly improved by research and development and grew by expanding its operations globally. With extensive sales & distributor network across the globe, it is a recognized leading company for the Planetary Gearboxes & Hoisting Solutions market.

Dinamic Oil, with headquarters in Modena, has consolidated its position on the international market, where it now has three production units, 8 subsidiaries in Europe, the Americas and Asia and an extensive network of distributors around the world.

We have adopted a "flexible thinking" approach that allows us to offer standard solutions as well as customized solutions dedicated to several markets.

**Hydraulic Hoisting Winch**

The standard range covers from 500 kg to 30 Tons line pull.

Customized winches can be produced according to specific requirements e.g. (manriding, double cable drum, special grooved drum, customized dimensions). The standard range covers from 500 kg to 30 Tons line pull. Winches are equipped with orbit motors or axial piston motors, negative multi disc brake and a variety of accessories are available e.g.: tension rollers, third wrap indicators, load sensing, grooved drums, level-winds, absolute encoders. Medium Marine Grade Painting is standard on all winches. Customized winches can be produced according to specific requirements e.g. (manriding, double cable drum, special grooved drum, customized dimensions).



**Slewing Gearboxes**

This standard range covers from 3.000 Nm to 160.000 Nm nominal torque, however special solutions are available for torque values up to 2.000.000 Nm.

The gearboxes have a compact design and a strong output support suitable for applications with high radial loads. Each model can be supplied with pinion shaft or male shafts (splined or cylindrical). Amongst the many accessories available static brakes can be fitted in a low opening pressure version (suitable for closed loop circuit) or in a dry version (suitable for high speed motor).



**Track drives**

This range covers from 80.000 to 900.000 Nm of maximum torque, equivalent to machine weights of 30 – 300 Tons (excavator) or 100 – 450 Tons (crawler cranes). The models are designed with ground gears and steel case and carriers in order to be the best solution for the most demanding applications. The modularity of the stage composition allows an extended range of ratios. These features make the EH series particularly suitable for alternative applications such



as wheels drives, winch drives and marine pipe layer drives.

**Wheel drives**

This small range covers from 800 Nm to 3.500 Nm maximum torque. The models are suitable for track drives and for wheel drives applications because of the relatively high load supported by the bearings (8.000 kg in the EH models). Several accessories are available (including static brake, disengagement system, control valves).



**Tower Crane Winch**

This range shows some examples of electrically driven winches designed for tower crane applications. Each lifting or pulling drive is developed according to the customer's specifications. The series is characterized by high performance relative to the compact dimensions.



**Hydraulic Pulling Winch**

This range covers from 1000 kg to 30 tons of line pull. The design incorporates three independent elements (hydraulic motor, static brake and planetary gearbox), to provide maximum reliability and ease of maintenance.



**Planetary Winch Drives**

This range covers from 26.000 Nm to 195.000 Nm nominal torque. The design is optimized for the heaviest applications in drilling, mobile and marine markets. Product certificates are available on demand (DNV, ABS, LR, GL and other major classification societies).



**Contact**

Email: maulik.kumar@dinamicoil.com  
 Website: www.dinamicoil.com



**DYNASET OY**



Dynaset hydraulic equipment converts the hydraulic power of mobile machinery into electricity, high pressure water, compressed air, magnet power, vibration and power boosting. Dynaset technology increases the productivity of mobile machinery from small vehicles to heavy machines by adding new functions with hydraulic equipment.

DYNASET HPW pump converts the hydraulic oil flow of a base machine into high pressure water. HPW pumps are used for pumping water and other fluids depending on a model. The power of the pump is defined by flow rate and pressure. Actuating power is supplied from the hydraulic system of the base machine or other hydraulic installation. Pumping fluid can be taken from reservoir or pressurized supply network. Water can also be taken from natural source such as lake or river.



DYNASET HDF pump converts the hydraulic oil flow of a base machine into pumping power. HDF pumps are used for pumping drilling fluids. The power of the pump is defined by flow rate and pressure. Actuating power is supplied from the hydraulic system of the base machine or other hydraulic installation. Pumping fluid can be taken from reservoir or pressurized supply network.



HG hydraulic generators are compact and integrated all-in-one units, especially designed for mobile installations. The generators use hydraulic power source to operate and produce high quality electricity. The generators can be used to power a wide variety of tools, appliances and electric machinery about the Product in maximum 100 words



HKR compressors are compact and integrated all-in-one units, especially designed for mobile installation. The only power source needed is a hydraulic system of base machine which provides compressor the required hydraulic flow and pressure. HKR compressor converts the hydraulic power into high quality compressed air and it can be installed in almost any working machine. HKR compressors are used to power for example pneumatic tools, filling tires, air flushing, purge air protection equipments, cleaning equipments and



## Product and Company Profiles of Few of the Exhibitors (continued...)

CAFS foam generation.

Dynaset HSP hydraulic submersible pumps are designed for fast and efficient pumping of water and other liquids. The volute and impeller of the HSP pump are made of wear-resistant material which makes it a perfect choice for pumping liquids containing impurities and solids DYNASET submersible pumps can be used in municipal services, civil engineering, industry, agriculture, off shore etc.

Hydraulic expansion unit HEU 320-40-E is designed for reliable and controlled expansion of rock-bolts. HEU is a compact unit assembled on a steel chassis being comprised of a pressure converter with all necessary components and instrumentation. HEU unit can be installed to any mining machine and operated whether from a platform or from ground. Completed with an expansion gun and water hose of proper length and pressure class, HEU unit assures effective carrying out of any bolting project.

### Contact

Email: tuomas.rasanen@dynaset.com

Website: www.dynaset.com



## ELESA AND GANTER INDIA PVT. LTD.



ELESA+GANTER is a worldwide sales joint-venture set-up to offer the widest product range of standard machine elements for the mechanical industry. Highly reliable products ensuring perfect functionality with a unique design represents the ELESA+GANTER distinctive quality code.

The combination of ELESA know-how in design and manufacturing of engineering plastics with GANTER expertise and precision in metal parts makes ELESA+GANTER a unique range.

ELESA+GANTER subsidiaries offer a pool of specialised engineers, constantly in contact with R&D departments at both the parent companies in Italy and Germany, to develop special executions or new technical solutions meeting customers' specific requirements.

Stock availability on site ensures local customers receive standard elements with reduced delivery times whilst providing timely and reliable answers.

**Over 80,000 product codes distributed in more than 70 industrialised countries with local presence and the highest technical consultancy.**

- Technological background of the two established mother companies
- Innovation in combination with decades of experience
- Unique design
- Optimised and widest product range of standard machine elements, driven by the market
- Worldwide distribution network
- Full stock availability with fastest delivery times
- Customised solutions
- Perfect service including technical assistance



Elesa+Ganter offers the widest range of standard machine elements. The combination of ELESA know-how in design and manufacturing of engineering plastics with GANTER expertise and precision in metal parts makes ELESA+GANTER

a unique range. Over 80,000 product codes distributed in more than 70 industrialised countries with local presence and the highest technical consultancy. The wide assortment of standard machine elements grows constantly through the development of new products - quality and service guaranteed.

### Contact

Email: rajinder.grover@elesa-ganter.in

Website: www.elesa-ganter.in

## EVO BEARINGS – INDIA BEARINGS AND MILL STORES

EVO BEARINGS – INDIA BEARINGS AND MILL STORE We are into bearings since 3 generations, more than 50 years, having 32 outlets across India.

Apart from bearings we deal in transmission chains and conveyor chains, V belts and conveyor belts, oil seal and rubber related items and crusher spares.

**Our brand :** EVO bearings, belts, chains, crushers (German technology) (customised in India)

**Distributor :** KYK Japan bearings, Renold Chains and sprockets, JK Fenner ECO-drive Plus, Maxspares, Toyopower, JK Fenner - Pioneer oil seals and belts and spares.

**Stockists :** SKF, FAG, INA, Schaeffler, NBC, Nachi, NTN, KOYO, RHP, EVO, KHK, FDK, RHB.

EVO bearings is a technology adapted by German. It matches and qualifies with all the factors of specification that soothes the life of the machine. Quality of EVO is the first priority. We believe in quality and services.

Fulfilling all the ranges of bearings - ball bearings, taper roller bearings, cylindrical roller bearings, spherical roller bearings, thrust roller bearings, linear motion bearings. Apart from bearings we are also into V belts, transmission chain, conveyor belts, and crusher spares. We have fulfilled certain non standard ranges of our bearing for forgings, cement, crusher based industry customers. We have served wide in cement industry, automotive industry, steel industry, wind mill energy, oil and gas industry, refineries, aeronautics industry, all crusher based industry, FMCG industries, food industries, pharmaceuticals, sugar industry, OEM's. Serving across globe majorly in Pan Asia.

Our technology and innovations are increasing day by day and will get more roots through generations.

Our major assembling is done in India with imports of all the parts.

Our bearing is made up of 52100 grade steel. And even we develop stainless steel bearings with SS304 and SS302 grade.

We also develop heavy duty and kevlar cords V belts for more durability and life of the belts associated with Japanese and Singapore company for belts.

KYK JAPAN BEARINGS originated in 1950 in Osaka, Japan, serving across globe. We are distributors of KYK Japan bearings.

Renold chains and sprockets is a U.K. based company, specialised in transmission chains and sprockets including conveyor chains. We are authorised distributor of Renolds.

JK GROUP WAS ORIGINATED IN 19TH CENTURY, we are distributor of JK Fenner Eco-drive V belts and oil seals and also stockist of other JK Fenner products.

Maxspare seals and Toyopower V belts and rubber related products, we are distributor of these brands too.

### Contact

Email: evobearings@gmail.com

Website: www.evobearings.com

Website: www.ibmsbearings.com



**EXOUSIA AUTOMOTIVE PVT. LTD.**



EXOUSIA AUTOMOTIVE IS AN ISO 9000: 2015 COMPANY WITH MANUFACTURING LOCATION AT RANJANGAON, PUNE. We introduce ourselves as the leading manufacturer of wide range of OTR & After Market products which include Tubeless swivel & Non-Swivel valves, Valve Cores, OTR caps, High pressure valves, Valve Accessories, Different Valve Extensions, O-Rings, Garage & In plant Service Equipment & many more. Along with we are into manufacturing of various molded Rubber products related to Automobile, Steel, Cement, mining etc, rubber mats, Anti vibration pads, etc. We have the technically capability to develop any type of Rubber product with application specific.



In an intention to create the values and provide high quality products & service to the customers we steer our manufacturing and supplying tools to diverse range of clients across India. We are managed by a team of qualified professionals, with our manufacturing facility at Ranjangaon, Pune.



Large Bore Swivel & Non Swivel valves, Core, Accessories for OTR Tyres applications.

High pressure Shock strut is used to charge Nitrogen in accumulators in Earth Moving Equipment like Dumpers, Excavators, etc and also for other applications in Defence. The operating pressure is up to 3000-15000 PSI.



Flexible & semi flexible Extensions give sufficient flexibility and helps for comfort mounting on valves in OTR tyres where as Rigid Extensions is used to mount in a straight line with the valve mouth. So according to applications both Extensions solve the purposes.



**Garage & In-Plant Service Equipment:**

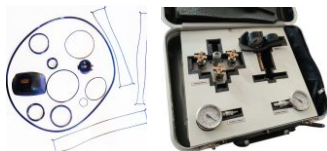
We provide Pressure Gauges with both Standard Bore & Large Bore application. Pressure Gauges with Glycerine filled are of Dial Sizes 2 1/2 "which is standard, also can be given the Dial Sizes as per specific customer demand.



O-Rings are used in various Earthmoving Equipment like Dumpers, Dozers, Loaders, Fork lifts, Excavators who are equipped with different sizes of Tubeless tyres. The main application is to retain the air pressure inside the tyre.

All Rubber molded parts for Automotive & non-automotive applications

Exousia Automotive provide "Nitrogen Charging Kit", mainly use to charge nitrogen gas in to Bladder, Pistons & Accumulators.



**Contact**

Email: [marketing@exousia.co.in](mailto:marketing@exousia.co.in)

Website: [www.exousia.co.in](http://www.exousia.co.in)



**FLOW LINK SYSTEMS PVT. LTD.**



We wish to introduce ourselves as a premier manufacturer of Knife Gate Valves (KGV), API 603 StainlessSteel Wedge Gate Valves, Stainless Steel Swing Check Valves, Tilting Disc Check Valve, Y type strainers and Basket Strainers valves under the Brand name of "FLS" & "KEROS". Our company is focused to provide a wide spectrum of valves meeting most serve and demanding services catering to various industrial segments.

We have integrated manufacturing facility having in-house Machine Shops, Testing & Assembly unit and "Well-known" Three Modern Steel Foundries having capacity of 7800 tons per annum and ability to produce 3000kg in a single piece casting.

Our range of products and services are as follows:

83 & 84 series – Uni/Bi-directional Knife gate valve

85 series – Transverse seal Knife gate valve (Bi-direction)

86 Series – Elastomer seal Knife gate valves

87 series – Elastomer seal Knife gate valves (High Pressure)

88 Series – Through Conduit Valves

89 series – Flaseal Valves

20 Series – Wedge Gate valve

40 series – Tilting Disc Check valve

45 series – Swing check valve &

Y-Strainer & Basket Strainer

**OUR MAJOR CUSTOMERS:-**

- NTPC - Talcher, Bihar, Simhadri, Dadri, Ramagundam, Tanda & Feroz Gandhi
- BHEL- Bangalore, Ranipet, BGR Energy Systems Limited & ALSTOM GE.
- CETHAR LIMITED, ANSALDO CALDAIE BOILER, THERMAX LIMITED.
- SAIL- Bokaro & Bhilai, JSW, Vizag Steel Plant, BPSCL, IREL.
- TTPS – Tuticorin, NLC – Neyveli, APPGENCO, MPGENCO, Merrick Industries Pvt Ltd.
- Karnataka Power Corporation Limited, Kudremukh Iron Ore- Mangalore.
- IOCL – Assam, PHILIPS CARBON BLACK LTD, Asian Paints.
- TNPL, Hindustan Newsprint Limited, Seshasayee Papers.
- Uttam Sucrotech International Private Ltd, EID PARRY, FIVES CAIL, Tecton.
- Ultratech Cement, Madras Cement, ACC Cement, Dalmia Cement, TANCEM.

**Special Notes**

We are internationally reputed manufacturers of world class valves including Knife Gate Valves and hence we submit the following special notes for your kind consideration.

**In-house Design & Development**

The valves assumes special significance being used for critical application viz. mill outlet/burner inlet, designed to meet with NFPA 85F requirements. Accordingly the valves are our in-house designed & development dept. uses latest software tools to care for the structural stability by simulation analysis. Moreover the critical areas are provided with adequate allowance to avoid shrinkage.

**In-house Pattern shop**

We have our in-house pattern making shop with latest machine tools including CNC, which controls all critical dimensions of the pattern. With the aid of MAGMA software, the methodology of pouring is established to minimize or eliminate occurrence of inclusions, pin holes, blow holes etc.

**In-house Foundry**

We have 3 "Well Known" IBR certified & PED approved Foundries. We maintain the correct composition of the metallurgy & the heat treatment process is optimized to get fully stress relieved castings. The laid systems of our Foundry produce Radiography Quality Castings. We recommend that Radiographic films be examined by your Inspector as part of QAP. We believe that castings obtained from PED approved Foundry will only meet with the above said criteria, especially when the valves are to be used for critical application.

**In-house Machine Shop**

The body, gland follower & plate are machined in our in-house machine shop employing conventional & CNC machines. The "Knife Gate" is machined on either side & final buffing is done to obtain mirror finish to 32 microns. This is especially of importance in the quoted valves for the reason that the Knife Gate must have an easy and friction free movement when operated even after prolonged time from it's inactive state. Stellite is another important aspect we care very much. We have GMAW (Gas Machine Arc Welding) using inert Argon Gas where automatic Stellite is done with imported Stellite 6 from Carboweld Germany. This will give uniform thickness & hardness of weld surface. Most importantly Chromium dilution is minimized & carbon pick up eliminated to obtain uniform hardness of min 400 BHN.

**In-house Testing**

All the valves are tested 100% prior to offering for third party inspection. While testing the valve for body as well as seat, we make sure that the valve is kept in the vertical direction. Only then the leakage across the seat can be assessed correctly. The above are few of the significant aspects we take care by going beyond the scope of the given specifications, in order to make sure that these critical valves perform trouble free. Needless to say that we have highly motivated, experienced & knowledgeable personnel at all levels of operation, by means of which we assure you of our customer service & consultancy assistance at all times.

**Knife Gate Valves, Series 3 Unidirectional Metal Seat**

**Features**

Series 3 Knife Gate Valve is designed for on-off and isolation of corrosive, abrasive and viscous liquid; abrasive slurries, pulp stock and dry materials. The series 3 Valve features, single piece yoke design, raised face seat for positive sealing, integral cast wedge, gate guides and high flow capacity. Conforms to MSS SP-81 and TAPPI

standard TIS 405-8.

**Specification**

- Body material: Carbon steel / Stainless steel / other alloys
- Gate Material: Stainless steel 410 / 316 /304 / other alloys
- Seat: Metal Integral with Body
- Size: DN 50mm to DN 600mm (Higher Sizes on request)
- Actuators: Hand wheel / Gear / Pneumatic / Electric / Hydraulic



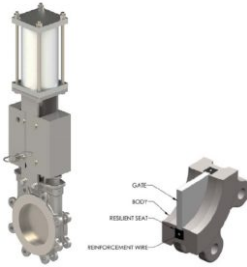
**Knife Gate Valves, Series 4 Bidirectional Soft seat**

**Features**

Series 4 Knife Gate Valve is a bidirectional valve designed for general industrial service applications. The design of the body and the soft seat assures non-clogging shut off on suspended solids which makes the valve suitable for industries like power plants, sewage treatment plants, chemical plants, food and beverage, sugar etc.

**Specification**

- Body material: Carbon steel / Stainless steel other alloys
- Gate Material: Stainless steel 410 / 304 / 316 / other alloys
- Size: DN 50mm to DN 600mm (Higher sizes on request)
- Actuators: Hand wheel / Gear / Pneumatic / Electric / Hydraulic



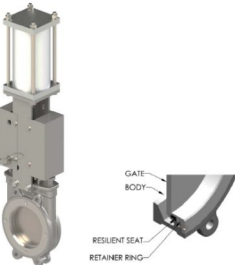
**Knife Gate Valves, Series 4U Unidirectional Soft Seat**

**Features**

Series 4U is an Uni-directional soft seated valve designed for on off and isolation of corrosive, abrasive and viscous liquid; abrasive slurries, pulp stock and dry materials. positive sealing, integral cast wedge The series 4U Valve features, single piece yoke design, raised face seat for and gate guides and high flow capacity. Conforms to MSS SP-81 and TAPPI standard TIS 405-8.

**Specification**

- Body material: Carbon steel / Stainless steel other alloys
- Gate Material: Stainless steel 410 / 316 /304 / other alloys
- Seat: Soft Seat
- Size: DN 50mm to DN 600mm (Higher Sizes on request)
- Actuators : Hand wheel / Gear / Pneumatic / Electric / Hydraulic



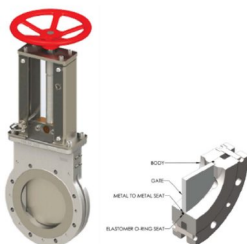
**Knife Gate Valves, Series 5 Bidirectional**

**Features**

Series 5 is a bi-directional flanged valve designed for high performance applications, fire safe ANSI class 150/300. The series 85 Valves features, tight shut off at full pressure, gate guided for full length of stroke which prevents jamming and noise free operation. The double heavy duty transverse seal with dual scraper blades for tight shut-off to atmosphere and also screws are provided for easy repacking during operation. Design conforms to MSS SP-135.

**Specification**

- Body material: Carbon steel / Stainless steel / other alloys
- Gate Material: Stainless steel 410 / 316 /304 / other alloys
- Size: DN 50mm to DN 450mm
- Actuators: Hand wheel / Gear / Pneumatic / Electric / Hydraulic



**Contact**

Email: nandakumar@flowlink.net  
Website: www.flowlinksystems.com

**FLSMIDTH PVT. LTD.**



Sustainable productivity through innovation

FLSmidth delivers sustainable productivity to the global mining and cement industries. We deliver market-leading engineering, equipment and service solutions to our customers enabling them to improve performance, drive down costs and reduce environmental impact. With MissionZero, our 2030 ambition is to enable zero emission and zero waste (water, energy) in cement production and mining. Our operations span the globe and our 11,000 employees are present in more than 60 countries. In 2019, FLSmidth generated revenue of DKK 20,6 billion.

The intersection of productivity and sustainability is where success lies today. We strive to enable our business partners and customers to generate profitable returns and value-creating growth, while always maintaining sustainability as a priority.

**Contact**

Email: shep-in@flsmidth.com  
Website: www.flsmidth.com

**G & C VALVES INDIA PVT. LTD.**

**G & C Valves**

G & C India Private Limited is the Indian subsidiary of Galli & Cassina S.p.A, Italy a prominent Italian Company established in 1919, mainly involved in the manufacture of a complete range of lubricated and non-lubricated Plug Valves.

G & C India Private Limited is an API-6D and ISO 9001:2015 certified company with its manufacturing facility based in the outskirts of Coimbatore, Tamil Nadu. The facility manufactures both Lubricated & Non-Lubricated (PTFE Sleeved) Plug Valves.

Our range of products includes –

- Pressure Balanced Lubricated Plug Valves API-6D
- Lubricated Plug Valves Standard Type API-6D
- PTFE Sleeved Plug Valves
- Pressure Balanced Double Block & Bleed Lubricated Plug Valves API-6D
- Dual Seal Plug Valves DB & B API-6D

The valves manufactured by us in Coimbatore are according to the design, drawings and quality assurance plan of Galli & Cassina, Italy. The valves supplied by G & C Valves India Private Limited, conforms to the quality standards maintained by Galli & Cassina globally.

**PRESSURE BALANCED LUBRICATED PLUG VALVES API 6D**



Class 150 to 2500

Size: DN 1/2" to 48"

Pressure balance lubricated plug valves are metal seated valves providing a tight shut off (0 leakage) sealing, valves shall be regularly lubricated along with their operation by injection of suitable grease. Thanks to the absence of any body cavity and as well as a simple & tough design, they are highly recommended for any critical "Full ΔP" operation and for handling any media with an high % of solids contents, further more they provide an excellent resistance to abrasion, they are free from routine maintenance, providing a long service life.

**LUBRICATED PLUG VALVES STANDARD TYPE API 6D – 2 WAYS, 3 & 4 WAYS MULTIPORT**

DN 1/2" to 16"

Class: up to 300

lubricated plug valves "standard type" are metal seated valves providing a tight shut off (0 leakage) sealing, valves shall be regularly lubricated along with their operation by injection of suitable grease. Thanks to the absence of any body cavity and as well as a simple & tough design, they are highly recommended for handling medium/low pressure high viscosity media &/or with an high % of solids contents; Thanks to its simple & tough design, and to the absence of any soft part (Elastomers or Thermoplastic), they are highly recommended to handle high Temperature services, they are also available with a partial/or full Steam Jacket on valve body. As for all the Lubricated Plug Valves family, they always provide an excellent resistance to abrasion, they are free from routine maintenance, providing a long service life. They are also available with 3- or 4-Ways Multipoint design.



**PTFE SLEEVED PLUG VALVES TWO WAY, TREE WAY AND FULLY JACKETED**

API6D ASME/ANSI 150 up to 900 Lb Available in SHORT, VENTURI, REGULAR or FULL-BORE Pattern

The PTFE sleeve serves as the seat for the valve plug thus eliminating contact of two metal surfaces. Turning effort is low and galling is avoided. The design also permits the use of any body/plug material combination. Positive shut-off is ensured and the valves are free from regular maintenance.



**Contact**

Email: b.ashok@gncvalves.com



**GALASSI & ORTOLANI INDIA PVT. LTD. GALASSI&ORTOLANI**

Galassi & Ortolani India Private Limited an ISO 9001:2015 certified company based in Coimbatore, India, is a Joint Venture between Galassi & Ortolani, Srl an Italian manufacturing multinational based in Pioltello, Milan and LeapINC Engineering & Business Solutions Private Limited.

Galassi & Ortolani Srl. has been making special valves since 1937. The experience achieved over the years has allowed Galassi & Ortolani to become a pioneer in offering fluid management solutions on a Global scale. Incidentally Galassi & Ortolani are the inventors of Pinch Valves and they held the patent for the same over 70 years back.

Our range of products includes –

- Pinch Valves – both open & closed design
- Diaphragm Valves – both Weir Type & Straight Through Type

Pinch Valves are full bore type valve that have Linear motion that can be used as On/Off, throttle and to Control media passing through it by using a pinching mechanism to obstruct/control the media. It gets its name Pinch Valve as the operating of Stopping or controlling the flow media is achieved by virtue of the pinching mechanism that is executed on the rubber sleeve.

Diaphragm Valves are bi-directional valves that also have Linear motion and can be used as On/Off, throttle and to Control media flow by regulating the area through which the media can pass through it. There are two types of Diaphragm Valves - Weir type, conveyed flow way and Full bore or straight through type. Both these types can be Lined or Unlined based on the type of flow media. They are extensively used in managing slurry, chemical media, in WTP's, STP's, DM Water Plants etc ...

**Galassi & Ortolani - Pinch Valve – Model – GS1**

GS1 is Galassi & Ortolani's traditional proven Pinch Valve model which has an open design. The specialty of this valve is that the pinching mechanism happens from both top & bottom at the same time whilst controlling the media. Available with various actuators like Gear Boxes, Pneumatic and Electric.



**Galassi & Ortolani - Pinch Valve – Model – GS21**

GS21 is Galassi & Ortolani's high pressure Closed design Pinch Valve. Sizes DN 25 to DN 100 is Single Pinch Design and Sizes DN 150 & above is Double Pinch Design. Available with various actuators like Gear Boxes, Pneumatic and Electric.



**Galassi & Ortolani – Diaphragm Valve – Model – GS51 Weir Type Diaphragm Valve**

GS 51 is Galassi & Ortolani's Weir Type Diaphragm Valves designed with Non-Raising Hand Wheel & Non- Raising Stem design from Sizes DN 25 to DN 300. Available with various actuators like Gear Boxes, Pneumatic and Electric.



**Galassi & Ortolani – Diaphragm Valve – Model – GS52 Straight Through Type Diaphragm Valve**

GS 52 is Galassi & Ortolani's Straight Through (Full Bore) Type Diaphragm Valves designed with Non-Raising Hand Wheel & Raising Stem design, providing an Open/Close indication from Sizes DN 25 to DN 200. Available with like Gear Boxes, Pneumatic and Electric.



**Contact**

Email: ashok.balakrishnan@galassiortolani.in

Website: www.galassiortolani.com

**GAUTAM AND COMPANY**



Gautam & Company started in 1999 by Mr Gautam Jain in Jalandhar, Punjab. Gautam & Company has extensive range of quality replacement parts for all types of generators, Engine, Excavators, Dozers, Dumpers, Motor, Grades, Loader Used for area of heavy Earthmoving, Construction, Infrastructure, Forestry, Agriculture, Cement, Marine & Mining Industries. These replacement parts are made by manufacturers like: Caterpillar, Tata Hitachi, Beml, Komatsu, L&T-Poclair, JCB-Escorts, Samsung- Volvo, Daewoo, Hyundai, Cummins, HM-Terex, Isuzu

You can rely on our experience accumulated over Two Decades. Gautam & Co. is an Importer, Stockist of an extensive range of Genuine Parts.

We Stock the spares to ensure timely delivery to our customers. We also import the spares as per the requirement of our valuable customers. No matter where you are located in India, our support is never far away. We ensure you fast response with the quality spare parts you need through quick and efficient logistics management employed by us. We are looking forward to make strategic partnerships around the country to work hand in hand and provide services to all our clients. We value our customers' satisfaction the most. We work hard to provide the spare to make your business more profitable. With our industry experience, an established business network and entrepreneurial foresight, has achieved competitive pricing for spares which will substantially bring down operation cost & benefit your business. Our consumer's need is our top quality.

With the experience, industry knowledge and customer loyalty built up over the years GAUTAM & Co. has become a prominent name you can always bank upon.

**Contact**

Email: info@gcoproducts.com

Email: gco1171@mail.com

Website: www.gcoproducts.com



**GHH GROUP**



GHH Group is a total solution provider to the Hardrock and Softrock Mining and Tunnelling Industries, with the GHH India facility based in Udaipur. GHH Group provides loaders, trucks, scalars, drills, bolters, long hole production drill rigs, rock tools and ground consolidation resins. GHH has various partners, in geographical locations, that have ranges of products that all add to the "total solution provider" approach. Through deep cooperation with partner companies like Overprime from Peru, Titan from Turkey, UVB from Botswana and Tembo from Netherlands, GHH Group has added a significant number of products to their portfolio including low profile utility vehicles, and narrow vein loaders, spray concrete units, general utility vehicles, passenger transporters, light cranes, scissor lifts, mini dumpers, lifting platforms and ANFO loading trucks as well as light duty full electric vehicles. GHH Group not only provides new, used and rental equipment but they also provide aftermarket parts and service support through the entire life of the machine as well as contract mining services.

**MUV5 Multipurpose Utility Vehicle**

CE certified, with ROPS and 2nd level FOPS certified operator cabin, suitable for working in underground mines, 4x4 chassis mounted, with powershift fully automatic transmission.



**BMP2x3 Scissor lift**

CE certified according to EN280 Mobile Elevating Work Platforms Standard, 3.2 m x 2.0 m platform dimensions with 1500 kg lifting capacity, ROPS & FOPS Level 2 certified closed cabin for underground mines, 4x4 all-wheel drive, powershift transmission, articulated steering.



**BIA100 Fuel and lube truck**

CE Certification, ROPS & FOPS Level 2 certification for underground mines, 4x4 all-wheel drive, powershift transmission, articulated steering.



**BEC100 Emulsion charger truck**

CE Certification, on-board screw air compressor, ROPS & FOPS Level 2 certification for underground mines, 4x4 all-wheel drive, powershift transmission, articulated steering.



**BAC2x250 ANFO charger truck**

CE Certified, with 2 x 250 / 350 / 500 l ANFO tank options, ROPS & FOPS level 2 certified closed cabin

## Product and Company Profiles of Few of the Exhibitors (continued...)

for underground mines, 4x4 all-wheel drive, powershift transmission, articulated steering.

### BIS20 Concrete Spraying machine

34 m<sup>3</sup>/h concrete spraying capacity (theoretical), ROPS & FOPS Level 2 certified closed cabin for underground mines, 4x4 all-wheel drive, powershift transmission, articulated steering. BIS20 is equipped with Titan concrete pump with casted body hopper and hydraulic vibrator, spraying head with 360° rotation, +135° / -135° tilt and 8° oscillation, robust manipulator with 8.5m vertical and 9.0 m horizontal spraying reach at 4m distance from working face. Thanks to its high degree of articulation, BIS20 is quite outstanding in sharp-turn underground mining ramps.



### BPT24 Personnel carrier

CE certified, 24-person capacity personnel cabin, 2-person driver cabin, ROPS & FOPS Level 2 certified closed cabins for underground mines, 4x4 all-wheel drive, powershift transmission, articulated steering. Thanks to its high degree of articulation, BPT24 is quite outstanding in sharp-turn underground mining ramps.

### BVK05 Crane truck

CE certified, max. 2,4 ton lifting capacity, total 8 ton load carrying capacity, ROPS & FOPS Level 2 certified closed cabin for underground mines, 4x4 all-wheel drive, powershift transmission, articulated steering.



### The LF-7 is a 7 metric ton narrow vein loader optimized for truck loading of the MK-A20

#### Features:

- ROPS/FOPS certified air-conditioned Cabin
- Best in class ergonomics and operator comfort
- Best in class tipping height
- Real 7 tons payload
- 164 kW installed power, available in Tier 3, Tier 4 F and EU Stage 5
- Remote control ready and complies with the DGMS
- CAN bus controls
- Optional "GHH InSite" remote data logging and analytics
- PDS (Personnel Detection System) interface
- Extremely robust frame and system design resulting in lowest operating cost



### The LF-3 is a robust compact 3.5 ton narrow vein loader.

#### Features:

- Ergonomic ROPS/FOPS certified open cabin
- Excellent visibility with Intuitive controls
- Optional high lift kinematic available for truck loading
- Simple robust and reliable hydraulics and electrics
- Low hydraulic working pressure
- Can operate at high altitudes above 4 000 m
- Compact and powerful design for narrow veins Easy ground level maintenance, with lockable main switch
- Centralized service points



### The LF-10 NEO is a 10 metric ton loader for mid seam applications.

#### Features:

- Best in class operator safety, ergonomics and comfort
- ROPS / FOPS certified cabin
- Air-conditioned closed cabin
- Vehicle height above cabin 2350 mm
- Best in class loading performance
- Extremely robust frame and system design resulting in lowest operating cost

- Customized buckets for different applications available
- Z-kinematic optimized for best truck loading performance
- Available in Emission class TIER 3, 4f and
- 240 kW Engine power
- 10 tons payload
- Best in class ground clearance
- Best tipping height in the 10 ton class



### The LF-14 is a 14 metric ton Loader for mid seam applications made for working with the MK-42 dump truck

#### Features:

- Compact and powerful design
- Best power to weight ratio of its class with 285 kW installed power.
- Available in Tier 3, Tier 4, and EU Stage 5
- Extremely robust GHH frame and system design resulting in lowest operating cost
- Z-link optimized for loading of dump trucks
- Customized buckets with GET
- Ergonomic ROPS/FOPS safety cabin with large legroom, excellent visibility and intuitive controls (optional small cabin available)
- All daily maintenance points from ground level
- Centralized service points
- CAN bus controls
- Optional "GHH InSiTE" remote data logging and analytics
- PDS (Proximity Detection System) interface



### The MK-A20 is a robust compact 20 metric ton narrow vein dump truck to be loaded by the LF-7.

#### Features:

- 20 t payload capacity
- Compact, simple and powerful design
- Hard rock and tunneling applications
- ROPS / FOPS certified cabin
- Great power to weight ratio
- Side seated driver for bidirectional driving or forward facing driver
- Extremely robust GHH frame and system design resulting in lowest operating cost
- Customized box designs and sizes available
- Proven technology only
- Low hydraulic working pressure
- Available in Tier 3, Tier 4, and EU Stage 5



### The MK-42 is a 42 metric ton dump truck for mid seam applications made for working with the LF-14 LHD.

#### Features:

- Up to 45.000 kg payload capacity
- Dump Box range from 17,5 m<sup>3</sup> up to 24 m<sup>3</sup>
- With 460kW best power rating in class
- Best turning radius in class
- less material adhesion in the box due to large dumping angle of 68°
- Optimal traction and higher driving comfort thanks to Oscillating articulation and front axle suspension system.
- Available in Tier 3, Tier 4, and EU Stage 5
- Easy, ground level maintenance
- Robust frame design resulting in lowest operating cost
- Integrated weighing system to maximize filling and reduce overload
- Proven technology and all parts from renowned suppliers



## Product and Company Profiles of Few of the Exhibitors (continued...)

- ROPS/FOPS safety cabin with best in class ergonomics, excellent visibility and trainer seat

**Face Master 2.3 is a twin boom jumbo designed for drilling blastholes of diameter from 41 mm up to 102mm (reamers). Design allows effective drilling of blastholes in workings of height from 3,5m up to 6,2 m.**

### Features:

- Powerful 20kW MM 20 rotary-percussive drifter
- Direct controlled drilling system with anti-jamming, collaring, feed control to optimize the drilling parameters.
- B40 HD booms with 1500 mm extension
- 14/7 ft telescopic feeders with floating piston.
- Working unit kinematics allowing easy cross-cut and roof drilling
- Min. tramming height 2.3 m. Compact design allows for tramming in minimum width of headings 4,5m @90 degrees.
- Articulated carrier with four-wheel drive - excellent gradeability and fast tramming.
- FOPS/ROPS canopy or cabin



**Production Master 2.3 long hole drill rig can be used to drill holes up to a length of 32 meters. The machine allows to make holes vertically, horizontally and at any other required angle set by the operator. The diameter of the drilled holes ranges from 64 to 115 mm.**

### Features:

- Montabert HC112 drifter
- 360° feeder rotation
- 180° drilling table rotation
- Various feed lengths 4/5/6 ft
- Carousel type rod handler for 16 rods
- FOPS/ROPS canopy or cabin
- Min. tramming height 2.45m
- Bluetooth control panel



**Face Master 2.1 is a narrow vein drill rig with coverage area of up to 30 m2, which on top of vein drilling enables also decline driving. It is characterized by compact dimensions and good maneuverability; with width of 1350mm it is optimal for narrow vein operations.**

### Features:

- 20kW MM 20 rotary-percussive drifter
- 10ft feeder in standard execution
- B36 boom
- Hydrostatic drive
- FOPS/ROPS canopy



**Roof Master 2.3 AWK is a bolting rig designed to work in medium to big cross sections and install resin or mechanical bolts. Thanks to powerful 13kW rotary-percussion drifter it can easily drill between 30-57mm holes in any rock conditions.**

### Features:

- 13kW MM13 rotary-percussive drifter
- AWK bolting mast with 8 bolt carousel - multiple sizes available
- Pneumatic resin injecting system
- B40HD boom
- FOPS/ROPS canopy
- Tires 12x20" foam filled



**Roof Master 1.7 is a rock bolter designed for bolting roofs and walls at minimum height of 1.9 m and max. reach up to 4,5m. The unit is designed to install both mechanical and resin bolts at the length of 1.6, 1.8 and 2.6m by a single operator. Dry drilling has the added advantage of very efficient dust collection system. The operating controls are located next to the drilling unit, enabling accurate bolt installation - both mechanical or resin types.**

### Features:

- Rotary head with dust collection
- "Man-in-position" system
- Possibility of drilling longer holes by rod adding
- Carrier with FOPS/ROPS certified operator's compartment
- MSHA certified bolting mast canopy



**Face Master 1.7 is a drilling rig for low-to-medium seams and designed for drilling blast holes of diameters from 41 mm up to 102mm (reamers). The unit can be used in methane-free mineral workings. Design allows effective drilling of blastholes in workings from 2.0 m height.**

### Features:

- Min. tramming height - 1.7m
- 20kW MM 20 rotary-percussive drifter
- Alloy feeder - 14ft in standard execution; telescopic feeders available as option
- B40L boom with 1500mm extension
- Tires 14x24"
- Max. coverage 67m<sup>2</sup>



### Contact

Email: [raj.singh@ghh-fahrzeuge.com](mailto:raj.singh@ghh-fahrzeuge.com)

Website: [www.ghhrocks.com](http://www.ghhrocks.com)

## HECTRONIC INDIA RETAIL & PARKING AUTOMATION PVT. LTD.

**Hectronic**

Smart solutions for parking and refuelling

Hectronic is a Swiss - German company and Hectronic India is wholly owned subsidiary of Hectronic Swiss. Hectronic is more than 50 years old ISO 9001 certified company with Head office at Switzerland, Manufacturing facility at Germany with presence in more than 70 Countries globally and direct offices in 7 countries. Hectronic India has main corporate office at Bangalore, Peenya Industrial estate with branch offices at Wagle Estate, Thane and Pune, also Hectronic has local sales and service representatives across India and for nearby countries. Hectronic represents ISOIL Implant S.p.A. Italy as a sole distributor and service provider for their wide range of Flow Metering Products, Accessories and Automations Solutions in India.

Hectronic is globally leader in providing End to End Advanced Refuelling

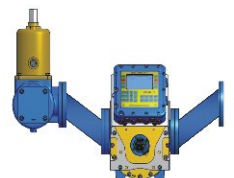
Management System "ARMS" based on the various requirements from customers like Oil & Gas Petroleum PSU companies, Mining, Construction, Cement, Fleet, Automotive and Transport as well Railways, Aviation and Ports sectors for their customised Fuel Management System needs. We have in place all mandatory and valid statutory approvals for all our products we are offering under End-to-End Advance Refuelling Management System approvals like OIIML, Indian W&M, ATEX, PESO for use in petroleum application.

### Decantation and Top Loading Management System

Hectronic Unloading/decantation and top loading solution is a comprehensive suite that combines the whole gamut of the disparate fuel management capabilities which provide greater accuracy and features at the edge. Our sustainable solution is scalable, flexible, reliable and can be customised to suite needs of various industries like Mining, Construction/Infra, Oil companies, Aviation sectors, Petrochemical, and industrial application. The solution delivers you accurate fuel unloaded. It is an administrative approach that allows the enterprises to organise and coordinate their operations with an aim to improve efficiency, reduce costs and provide compliant audit trail.

### Stationary Management Solutions

HECONOMY is a high performance, user-friendly outdoor payment terminal for modern company filling stations. Numerous amounts of data are collected by this terminal during fuelling process such as Transaction No, Vehicle ID, Amount Fuel Dispensed, Efficiency of the vehicle, Odometer reading and many more. All these data are recorded securely, backed up and can be extracted anytime anywhere at ease and using our software detailed report and analysis are generated in suitable popular formats such as excel, PDF.



**Bowser Refuel Management Solution**

Places where there is no provision for setting up traditional stationary filling stations e.g. for mining due to uneven terrain, we also provide bowser equipped with our Hectronic automation smart fuelling solution which lower operational costs and bring in high accountability.

**Inventory Management Systems**

HLS 6010/Wireless (Gauge) + Optilevel Supply provide full insight regarding above/underground tanks multiplexed and monitored using our software. Alerts pertaining low tank level, incompatible fluid, leakage, and full transparency/accountability can be achieved easily. On change of liquid the gauge automatically adapts to the new medium. Therefore, it provides very flexible use. The manufacturer of various lengths and thread standards according to your wishes is possible. The gauge does not contain moving parts, hence, does not subject to wear and tear.

**Software Solution**

All the data are collected and transferred to Hecpoll which is a software driven solution which structures and generates reports and performs analysis from the data gathered. Hecpoll offers communication and analysis in one. It develops an extensive portfolio of components and functions for business applications, including support for multiple languages. These include export and import interfaces, user administration and a results-driven user interface, making it fast, intuitive, and effective to work with all applications.

Petro Point is a RFID technology system integrated with our terminals which acts as an authorization centre i.e., only whitelisted vehicles can be fuelled. This simple and effective system will help bring in control in your fuelling process.

**Contact**

Email: sunitha@hectronic.in  
 Email: kalbugi@hectronic.in  
 Website: www.hectronic.com



The Feeder Breaker is typically used in opencast coal mining to link the mobile and stationary equipments of the section. It evens the flow of coal onto the conveyor belt and breaks the coal down to manageable size thus increasing opencast production.



**CHAIN CONVEYOR**

Chain Conveyors are material handling systems open-cast mining scenarios. Consisting of durable twin outboard chains driven by sprockets at the drive and tail ends. Chain Conveyors are robust and versatile end to end conveyor solution with both single and double drive as per customer requirement. Indicon Westfalia has manufactured Chain Conveyors in technical partnership with DBT, Germany. However, today all components are manufactured indigenously. It's specifically designed to withstand the shock of impact endured during self-loading of blasted coal. Our focus on reliability, endurance, and low cost of repair and maintenance is intended to meet the needs of high production mining.



**Contact**

Email: it@indiconwestfalia.com  
 Website: www.indiconwestfalia.com

**JM FRICTECH INDIA PVT. LTD.**



JM Frictech India Pvt Ltd (JMI), Established in 2008 as a joint Venture between M/s Jinmyung Frictech Co Ltd - Korea and NTC Engineering Services Pvt Ltd – India. Design, Develop, Test and Manufacture of Wet Brake & Wet Clutch System with its actuation parts (both Mechanical & Hydraulic Brake Parts). JMI is the most preferred supplier to all leading Tractor and Backhoes OEM's in India and we also supply to Construction & Material handling equipment's segments. JMI exports to various OEM's in South America, China, Europe and other parts of the world.

**Manufacturing Facility:**

- JMI believes in self-contained facilities with High Precision CNC Controlled Machines and SPM's to ensure the products as per specification.
- Capabilities of Design, Develop, Test & Manufacture the Wet Brake & Clutch System under "One Roof".
- Friction Material (Paper, Carbon, Graphite, Kevlar etc.) chosen from its widest range suitable to the application.
- Products are manufactured with "online" Checking / testing features keeping the criticality of the final product.
- Brake and Clutch are critical for functioning of the end product/ equipment, JMI ensures defect free parts with inbuilt "Poke Yoke" System in assembly. Integrated global experience in these parts.
- Accredited with ISO 9001:2015 / ISO, 14001:2015/ ISO 45001 2018 Certified Organization.
- Quality is the way of life at JMI and we benchmark with global quality & standard

**Friction Discs** are used to slow or stop the motion of drive shafts which will in turn stop the wheels from rotating and also in engage and disengage function of clutches. JMI supplying to all leading Dumpers, Backhoes, Forklifts, Tractors, Marine and Defence equipment's.

**JMI manufacturing Range start from 72mm to 800mm**



**Intermediate Discs** are used in high torque transmissions applications like Dumpers, Backhoes, Forklifts, Tractors, Marine and Defence equipment's. It will be used in Brakes and Clutches application.



**JMI manufacturing Range start from 72mm to 800mm**



**Annular Piston Brake** is a hydraulic operating mechanism to ensure the running clearance is maintained as plate wear takes place. This usually consists of a spring and a friction device.

**Power Shuttle Clutch** - A power shuttle is an additional unit used in transmissions and is generally used in Off -Road segments. Power shuttle is used for the instant forward-reverse movements with a



**INDICON WESTFALIA LTD.**



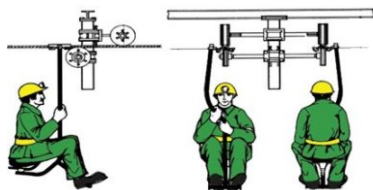
Indicon Westfalia Limited is poised to be India's leading Man Riding Chair Lift System and coal equipment

Manufacturer and we aim to do so by prioritizing quality. We are a client-facing, turnkey solution provider, who specialises in tailor-made manufacturing and total customer engagement. Formed by the merger of Bharat Westfalia and Indicon Westfalia is an original equipment manufacturer of multi-function Man Riding Chair Lift System and coal mining equipment with an emphasis on quality and customization. We pride ourselves on being a bespoke high-end engineering solutions provider. We are pioneer in engineering products and consistently focus on providing appropriate engineering solutions to Indian Mining & other industries since 1980.

**MAN RIDING CHAIR LIFT SYSTEM (MRCL)**

Man Riding Chair Lift System is powered by a hydro-mechanical drive system and ergonomically designed for optimal comfort and functionality. Chairlift System comes with modular design and simple hydraulics for easy assembly, transportation and maintenance, although every unit is custom-designed to meet spatial and geographic constraints. Chairlift Systems generally possess.

- Range: 3000 meters
- Speed: 3 m/s
- Capacity: 720 persons/hour
- Gradient: up to 45 degrees
- Horizontal Curve: 15 – 120 degrees



**FEEDER BREAKER**



## Product and Company Profiles of Few of the Exhibitors (continued...)

hydraulic actuation unit. Which avoid the fatigue of operators .

**Forward-Reverse Clutch** - These parts are used in vehicles like forklift, Tractors and etc. Where frequent forward -reverse moments are required.

**Master Cylinder** - The master cylinder, also known as the Brake Master Cylinder, converts the pressure on the brake pedal to hydraulic pressure by feeding brake fluid into the brake circuit and controlling this according to the mechanical force.

### Contact

Email: mktotr@jmil.co.in

Email: csc@jmil.co.in

Website: www.jmil.in



## K I TRANSPOWER PVT. LTD.

We would like to take this opportunity to introduce ourselves as a leading Manufacturers of Flexible Couplings having our state-of-the-art manufacturing unit at Kundli, (Distt. Sonipat) Haryana. India.

M/s K.I. Transpower (P) Ltd was established in 2012 and has emerged as one of the fastest growing manufacturers of Flexible Couplings in the region. We are catering to coupling need of every industrial sector. We manufacture almost every type of coupling (Standard or Customized) and transmission products which includes High quality Gear Couplings and Multi Disc Couplings for different applications.

For a brief outlook our product range includes following types of couplings which are of a proven quality.

1. GEAR COUPLING: A full range of Half Gear and Full Gear Couplings. Size starting from 100 to 119. (ALL INHOUSE). (Any Combination, Brake Drum, Brake Disc, etc).
2. PIN BUSH COUPLING: We make both types. Barrelled shaped Pin bush and Straight Pin bush designs. Interchangeable with other leading manufacturers of the same.
3. TYRE COUPLING: All Sizes from K 40 to K 180.
4. JAW FLEX: Type L, RRL, RRS, SW, SWQ, GR, GS and heavy-duty series type H. (High grade CI Material).  
Also available in Aluminium and Steel.
5. GRID COUPLING: Resilient Coupling. Interchangeable with leading manufacturers of the same.
6. DISC COUPLING: All metal metallic disc coupling for high speed applications. Interchangeable with all other leading manufacturers.
7. CHAIN SPROCKETS: High quality single piece Chain Sprocket (Simplex, Duplex and Triplex).
8. GEAR BOX: Gear Box for Mining and Crusher application.
9. WHEELS: High Quality Crane wheels for EOT application.
10. OPEN GEARS: (Subjected to quantity and Size).
11. CARDAN SHAFTS: High précised, Light duty and Heavy-duty Cardan shafts under stringent quality norms.

We also represent R+W & SGF (Germany) for highly précised and Backlash free Couplings in India. These couplings have got wide range of applications in Machine tools and Construction equipments

Our products find application and fits in every conceivable drive like, Rolling Mill application, Conveyor drives, Pressure vessels, Feed Pumps, Sugar Mill drives, Rubber processing Machinery. EOT application and many more. Our in-house CAD facility helps us to design and manufacture the coupling w.r.t. application parameters

We would appreciate and highly obliged if you could enlist our name in your approved vendors list for supply of Flexible couplings enabling us to render our quality services to your respectable organization.

### FULL & HALF GEAR COUPLINGS

- Torque rating from 559 to 1,47,000Nm. Size from 100 to 119
- Bore diameters from 13 to 710mm
- Gear Spacer couplings are also available on request



- Less Backlash, Compact assembly, Interchangeable with Other manufacturers, Steel plants, Cement plants, Sugar plants, Power plants, Rolling mills, EOT Cranes and many more

### BRAKE DRUM COUPLINGS

- Torque rating from 567 to 64170Nm
- Bore diameters from 18 to 90mm
- Outer diameters from 100 to 400mm
- Size above 400mm also available on request
- EOT Cranes application



### MULTI DISC COUPLINGS

- Torque rating from 33 to 19000Nm
- Bore diameters 20 to 230mm
- Stainless steel shims, high tensile bolts
- Available with standard & non standard spacer length. High Power to weight ratio and backlash free coupling. Suitable for general industrial and High Speed applications. Balancing to Grade 6.3 Interchangeable with Other manufacturers.
- API Optional.



### CARDAN SHAFTS

- Torque rating from 580 to 55000 Nm
- Flange diameter 86 to 315mm
- Angular Movement (Degrees) 15 to 25
- High Performance made to Order Shafts.
- Multi Industrial applications.



### R+W SAFTEY COUPLINGS

- From 200 to 250,000Nm
- Bore diameters from 30 to 340mm
- Extremely compact
- Robust
- Full disengagement
- Automatic re-engagement available



### SGF COUPLINGS

- SGF Tenpu Fiber Technology
- Maintenance Free
- No Need To Change Oil & Grease
- Resistant To Shock Loads
- High Power Density



### Contact

Email: vikas@kitranspower.com

Website: www.kitranspower.com



## KEERTHI PUMPS INDIA PVT. LTD.



We started way back in the year 2000 as an Industrial pumps' manufacturer in Coimbatore. We are the leading Pump manufacturer and Exporters of Industrial Pumps which are being used in a variety of markets and applications throughout the world.

KEERTHI Pumps entire gamut caters to wide spectrum of Domestic and Globally the specific needs of industrials with more than 350 models in our Industrial pumps, encompasses Centrifugal End suction Pumps, Pulp and paper stock (upto 10% Consistency) Chemical Pumps, ANSI Chemical pumps, Engine / Motor driven Dewatering Pumps, Vertical Sump pumps, Axial Flow Pumps, Horizontal Split casing Pumps, Horizontal Multistage Pumps and Pedestal Pumps etc. since 2000.

We catered our Pumps almost all the paper industries in throughout India, KEERTHI pumps running in various paper industries, process industries in most of the regions in India .

## Product and Company Profiles of Few of the Exhibitors (continued...)

KEERTHI Pumps is well known a acknowledged leader and continuous Research and Development Industrial pumping solutions with Hi-tech Engineering technology to ensure matchless performance for Greater quality and life for Customer Delight.

KEERTHI Pumps proudly announced that we have our own foundry with the capacity of 3000T/ Annum with highly efficient Induction Furnace

### Specific to the requirements of all Industrial sectors such as

- Paper and Pulp stock ,Sugar Industry
- Fire Fighting ,Cooling towers & heat exchanger systems
- Heating and Air Conditioning Plants Textile Industry & Jet Dyeing
- Food & Beverages Processing Industry
- Petrochemicals, Oil and gas Industry, Refineries Fertilizer & Agrochemicals Industry
- Leather industry, Paint Industry ,Energy & Thermal Power Plant
- Organic chemical Industry ,Chemical Process Industries, Thermic Fluids
- Public water supply and Canal lift irrigation
- Water & Waste Water Treatment Industry CETP & STP, Dewatering
- Mining , Minerals & M sand Marine & Shipping industry
- Steel , Copper & Zinc Plants ,Cement Plants Marble, Granite & Ceramics Industry

Our continued focus on expertise Performance and after sales service is the foundation of our success. Our pumps are known for Consistent, Quality and Performance that outlasts competitors.

### End suction Pumps – KWP Series

- Flow Up to 550 m<sup>3</sup>/ hr
- Total Head Up to 100 m
- Max. Liquid Temp 90oC
- Pump Sizes DN 32 - DN 150



#### Material of Construction:

- Pump Casing Cast Iron /WCB / SS
- Impeller Cast Iron / Bronze / SS
- Shaft EN - 8
- Sleeve SS 410

Application: Water Supply, HVAC systems, Swimming Pools fountains, Food, Sugar, Paper, Pulp, Chemical, Cement, Steel & Construction Industries, Power Plant, Irrigation, Pressure Boosting, etc.

### HSC Split casing Pumps

- Flow Up to 3500m<sup>3</sup>/ hr
- Total Head Up to 120 m
- Max. Liquid Temp 100oC / 212 F
- Pump Sizes DN 32 - DN 150
- Speed 2900 RPM



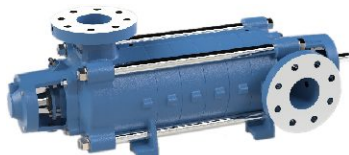
#### Material of Construction:

- Pump Casing Cast Iron /WCB / SS
- Impeller Cast Iron / Bronze / SS
- Shaft EN - 8
- Sleeve SS 410

Application: Long water Transport, HVAC systems, Food, Sugar, Paper, Pulp, Chemical, Cement, Steel & Construction, Power Plant, Canal Water Supply, Irrigation, Pressure Boosting, etc.,

### Horizontal Multistage Pumps

- Flow 70 m<sup>3</sup>/ hr
- Total Head 54 Bar
- Max. Liquid Temp 180oC / 356 F
- Pump Sizes DN 32 - DN 150
- Max power Upto 180 HP
- Speed 2900 rpm



- Suction & Delivery 80x80 & 100 x100

#### Material of construction:

- Pump Casing Cast Iron /WCB / SS
- Impeller Cast Iron / Bronze / SS
- Shaft EN - 8
- Sleeve SS 410

Applications: Food, Sugar, Paper, Pulp, Chemical, Cement, Steel & Construction Industries, Power Plant, Boilers, Pressure Boosting, Firefighting etc.,

### PSX Pulp and paper stock Pumps

- Flow Up to 2500 m<sup>3</sup>/ hr
- Total Head Up to 80 m
- Max. Liquid Temp 140oC / 284F
- Pump Sizes DN 65 to DN 400
- Casing Pressure 22Bar



#### Material of construction:

- Pump Casing Cast Iron /WCB / SS
- Impeller Cast Iron / Bronze / SS
- Shaft EN - 8
- Sleeve SS 410

Applications: Food, Sugar, Paper, Pulp, Chemical, Cement, Steel & Power Plant,

### Mixed flow Pumps – MF series

- Flow Up to 3500 m<sup>3</sup>/ hr
- Total Head Up to 45 m
- Max. Liquid Temp 100oC / 212F
- Pump Sizes 200 To 450mm
- Speed 1800RPM
- Casing pressure Upto 16 Bar



#### Material of Construction:

- Pump Casing Cast Iron /WCB / SS
- Impeller Cast Iron / Bronze / SS
- Shaft EN - 8
- Sleeve SS 410

Applications: Water Supply, Food, Sugar, Paper, Pulp, Chemical, Cement, Steel & Construction Industries, Power Plant, Mines etc.,

### Process pumps – ACH / CP

- Flow Up to 600 m<sup>3</sup>/ hr
- Total Head Up to 180 m
- Max. Liquid Temp 200oC
- Pump Sizes DN 32 - DN 200



#### Material of Construction:

- Pump Casing Cast Iron /WCB / SS
- Impeller Cast Iron / Bronze / SS
- Shaft EN - 8
- Sleeve SS 410

Applications: Food, Sugar, Paper, Pulp, Chemical, Cement, Steel & Construction Industries, Power Plant, Water Supply, HVAC systems, Fire Fighting, Sea water desalination plants, Swimming Pools, fountains, Power Plant, Irrigation, Pressure Boosting, Effluent Treatment Plants , Clarified water, back water, white water De-Inking water, soft water etc.,

### Vertical Sump Pumps

- Flow Up to 1400 m<sup>3</sup>/ hr
- Total Head Up to 100 m



## Product and Company Profiles of Few of the Exhibitors (continued...)

- Max. Liquid Temp 120oC
- Pump Sizes DN 25 - DN 300
- Casing Pressure 22 Bar
- Speed 2900RPM

Material of construction:

- Pump Casing Cast Iron /WCB / SS
- Impeller Cast Iron / Bronze / SS
- Shaft EN - 8
- Sleeve SS 410

Applications: Food, Sugar, Paper, Pulp, Chemical, Cement, Steel & Construction Industries, Power Plant,

### Dewatering Pumps – DWPx Series

- Flow Up to 1200 m3/ hr
- Total Head Up to 30 m
- Max. Liquid Temp 60oC / 140F
- Pump Sizes 100x100,150x150,200x200& 250x250
- Speed 1800RPM
- Power rating Upto 200 Hp
- Fuel Tank capacity 250ltrs



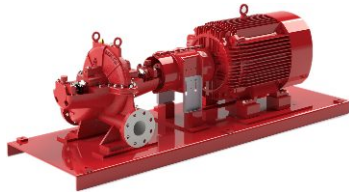
### Material of Construction:

- Pump Casing Cast Iron /WCB / SS
- Impeller Cast Iron / Bronze / SS
- Shaft EN - 8
- Sleeve SS 410

Applications: Flood dewatering, Mines, Construction site, Underground dewatering

### Fire Fighting Pumps

- Flow Up to 550 m3/ hr
- Total Head Up to 100 m
- Max. Liquid Temp 90oC
- Pump Sizes DN 32 - DN 150



### Material of Construction:

- Pump Casing Cast Iron /WCB / SS
- Impeller Cast Iron / Bronze / SS
- Shaft EN - 8
- Sleeve SS 410

Applications: HVAC systems, Fire Fighting application

### Axial Flow Pump

- Flow 2600m3/hr
- Total Head 5mtrs
- Max. Liquid Temp 90 degree
- Pump Sizes Upto 450mm



### Material of Construction:

- Pump Casing Cast Iron /WCB / SS
- Impeller Cast Iron / Bronze / SS
- Shaft EN - 8
- Sleeve SS 410

Applications: Sugar, Paper, Pulp, Chemical, Cement, Steel & Construction Industries, Power Plant, etc.,

### Contact

Email: ayyappan@keerthipumps.com

Website: www.keerthipumps.com

## KLASSIC KLAROL FILTERS PVT. LTD.

Klassic Klarol Filters Pvt. Ltd. manufactures hydraulic system flushing and oil cleaning machines under the brand name KLAROL.

Klarol Oil Cleaning Machines are capable of flushing the hydraulic system of earth movers and other machines with hydraulic powerpacks. Purification of hydraulic oils in Earthmovers can be beneficial as follows:

- Prevent slower machine performance and erratic operation which are responsible for lower production.
- Reduce component failures related to oil contamination.
- Reduce expensive downtime.
- Reduce spare parts replacement cost.
- Save on expensive man hours spent on machine repairs due to oil contamination related breakdowns
- Save on expensive oil replacement costs by increasing hydraulic oil life.
- Help to reduce diesel consumption.
- Reduce Global Warming, soil and water pollution.

Change Your Thinking ...Not Your Oil !

### Contact

Email: amitgupta@klarol.net

Website: www.klaroloilcleaningsystems.net



KLASSIC KLAROL FILTERS PVT. LTD.  
— OIL CLEANING SYSTEMS —

Hydraulic Oil Filtration and System Flushing time ..



Klarol Hydraulic Oil Cleaning Machine



## LCS CONTROLS PVT. LTD.



Partner in weighing & automation

LCS controls Pvt Ltd., founded in year 1995, nearing ~25 years of service in the field. We are proud to have served a wide range of customers in a wide range of industries.

Designers, manufacturers and "end-to-end" total solution providers in onboard weighing, industrial weighing, batching, bagging, packing and allied automation with a full-fledged manufacturing facility in industrial hub of Chennai, India

All in one roof "mechatronics" expertise: embedded electronics, mechanical items, electrical drives, material handling equipments, sensors & pneumatic actuators, real-time software etc. This is LCS's unique strength, since many others lack in multi-discipline engineering skills.

Our R&D centre accredited by Department of Scientific & Industrial Research (DSIR), Government of India, we consider it as an honor and recognition of our innovation spirit.

ISO 9001:2008 certified company

We are supplying Onboard weighing system for Dumpers (Payload-DT), Tippers (Payload-FBT) & Wheel loaders (Payload-WL). These weighing systems provide great advantage to mining industries to get to know the weight inside the dashboard of the vehicle. In addition we supply safety related products for tippers known as "TILT SWITCH" which enhances the safety of vehicle and operator.

### Onboard weighing for Dumper

The load measuring system range of products for dumpers consists of products on monitoring tools designed to maximize the efficiency and productivity of the Dump truck. The LMS is used to collect payload data and the speed of travel to enable safer loading practices and production



efficiency information.

**Onboard weighing for Tipper**

The load monitoring system in tippers measures the load and indicates the operator on the loading, whether it is under-load or over load. The system records the data in its memory and it can be retrieved using a thumb drive.

**Onboard weighing for Wheel loader**

Load is calculated in the loader while loading it in the truck. Advanced methodology provides accurate results of the load. Different types of report are stored in the memory and can be connected to a printer/GPRS for monitoring.



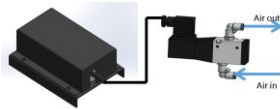
**Onboard weighing for Tipper/Dumper**

The product restricts the operator to tip in an unsafe angle. This enhances the safety of vehicle as well as operator. The operator is indicated with a warning light and a buzzer on the unsafe angle of the vehicle.

**Contact**

Email: [vignesh@lcscontrols.in](mailto:vignesh@lcscontrols.in)

Website: [www.lcscontrols.in](http://www.lcscontrols.in)



**LIEBHERR INDIA PVT. LTD.**

**LIEBHERR**

In India, the Liebherr Group is represented by Liebherr India Private Limited a sales and service company and by three other manufacturing companies. Liebherr India Private Limited was established in 2006, having its Corporate Office in Sanpada, Navi Mumbai, Maharashtra, India and employs a workforce of 200 people, providing sales and service for the product lines of Earthmoving and Mining Equipment, Mobile Cranes, Piling & Drilling Rigs, Crawler Cranes and Maritime Cranes, Aerospace and Components to customers in India and in the neighbouring countries such as Nepal, Bhutan, Bangladesh and Srilanka.



Liebherr manufacture a full range of large Hydraulic Excavators with 7.5 - 42 Cum Bucket Operating weights from 100 t to 800 t and power ratings from 565 kW to 2,984 kW (757 HP to 4,000 HP).

Electric Versions also available.

**Liebherr T 264 Electric drive powered by Cummins diesel engine.**

- Gross Vehicle Weight (GVW): 417 tonnes(460 US ton)
- Nominal Payload: 240 tonnes(264 US ton)
- Engine - 2013 kW / 2700 HP



**Liebherr Mining GET Solution:**

- Three Tooth Profiles, in Five Sizes
- Innovative Design
- One Single Locking System
- Truly Hammerless System
- Easy Serviceability



**Dredging Excavator:**

Liebherr provides a full range of maritime excavator equipped with a complete and unique range of attachments adapted to the customer's application. Operating weights from 100 t to 580 t and power ratings from 500 kW to 2,984 kW (701 HP to 4,000 HP). Liebherr dredging excavators are dedicated to move material in any condition, on seas, oceans or fluvial channels.

**Contact**

Email: [deepak.patil@liebherr.com](mailto:deepak.patil@liebherr.com)

Email: [ronnie.dsouza@liebherr.com](mailto:ronnie.dsouza@liebherr.com)

Website: [www.liebherr.com](http://www.liebherr.com)



**MATEC INDUSTRIES**



Matec Industries designs and manufactures complete plants for crushing, screening&washing of aggregates and waste water purification & filtration solutions in many sectors, the most important of which are: coal, iron-ore, aggregates, gravel, sand, stone, concrete, ceramic, glass.

Matec's objective is the complete customer satisfaction, guaranteeing a fast after-sale service, but also pre-sale consultancy service, to accurately identify the real needs of potential customers. We have installed over 3000 wastewater purification plants all across the world, 400 in the last two years: this is the real guarantee of our production and quality service.

**Our group is a big family:**

- Matec machinery technology for filter presses
- Matec Steelworks for Engineering
- Matec Washing for washing & screening plants
- Maxtec for crushing mobile units
- Alfa Pompe for every kind of pump (vertical, submersible, horizontal, centrifugal and more)
- Matec Corporation for spare parts of every kind
- Elettromatec for plants automation.



One of our biggest installation in Brazil with nine filter presses 2000x2000 in a big mine site.



Our Cube solution is the right way to have a water treatment mobile plant that you can build up in a day and start to treat your sludge.

Matec is able to provide decanters of any type, like vertical deep cone or horizontal, paste or rake thickeners like this one in Portugal.



Matec means also washing & screening plant for aggregates, with a wide range of solution for rocks and sands.

Our biggest filter press called "Megalith", a huge beast 2500x2600 with 6 pistons. Big flow rate to treat Δ We have the right solution!



**Contact**

Email: [n.rajbansi@matecasia.com](mailto:n.rajbansi@matecasia.com)

Website: [www.matecindustries.com](http://www.matecindustries.com)



**MINERAL EXPLORATION CORPORATION LTD.**



Mineral exploration Corporation Limited (MECL) was established as an autonomous Public Sector Company in October 1972, under the administrative control of Ministry of Mines, Government of India for systematic exploration of minerals, to bridge the gap between the initial discovery of a prospect and its eventual exploration. MECL has the mission "to provide high quality, cost effective and time bound geo-scientific services for exploration and exploitation of minerals".

MECL has completed various projects/reports and established Millions of Tonnes of ores/ mineral reserves of minerals like Coal, Lignite, Bauxite, Copper, Gold, Lead-Zinc, Iron Ore, Limestone, Manganese, Magnesite, Chromite, Fluorspar and several other Industrial Minerals since. It has recently diversified into mining and beneficiation of minerals and sampling & analysis of coal stocks.

**MINERAL TARGETTING**

- Order OF Magnitude Studies
- Remote Sensing Studies
- Regional & Detailed Geological Mapping
- Topographic & Underground Survey
- Surface & Borehole Geophysics
- Pitting & Trenching
- Laboratory Studies



## Product and Company Profiles of Few of the Exhibitors (continued...)

- Appraisal/ Evaluation Report

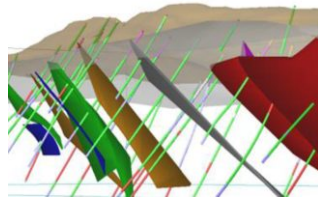
### MINERAL DEPOSIT ASSESSMENT

- Exploratory Drilling & Mining
- Borehole Deviation Survey
- Core & Mine Sampling
- Chemical & Physical Analysis
- Mineralogical & Petrological Studies
- Preparation of Plans & Section
- Reserves & Grade Estimation
- 3-D ore body modelling



### OTHER SERVICES

- Survey for Infrastructure facility
- Bulk sampling for beneficiation studies
- Mine construction
- Manufacturing of drilling accessories
- Consultancy related to mineral industry



### Contact

Email: headbd@mecl.gov.in

Website: www.mecl.co.in



## MODY PUMPS INDIA PVT. LTD.

MODY PUMPS (INDIA) PVT. LTD., a wholly owned subsidiary of MODY PUMPS INC. USA, primarily focussing on manufacturing and supply of pumps ideally geared for the Mining Industry.



Mody Pumps have been providing solutions to the Worldwide Mining industry for decades. It offers comprehensive portfolio of innovative pumps & controls for mining applications, from light-weight and robust submersible dewatering/slurry pumps to wear-resistant high-lift centrifugal Horizontal Self-Priming pumps for the removal of sludge, mud, silt, and water in abrasive and corrosive environments and Air Operated Diaphragm Pumps.

### Mody Pumps offers solutions in Mining Industry in the following areas

- Mody Submersible Electric dewatering pumps
- Mody Submersible Electric Super high head Dewatering pumps
- Mody Submersible Slurry Pumps (with Agitators, Jet ring arrangement)
- Mody Horizontal Submersible Slurry Pumps
- Mody Submersible pumps mounted on floating Barge / Pontoon
- Mody Centrifugal, self-priming Skid mounted /Trolley Mounted pumps
- Mody Hydraulic operated Slurry Pumps
- Mody Air-Operated Diaphragm Pumps
- Pump controls ( Local Panels / Wired or Wireless Automation solutions)

Mody Pumps endeavours to be a preferred partner in addressing the customer's Pump requirements & fluid handling solution.

**Mody Slimline "G" series** Electric Submersible dewatering Pumps offers range from 1.5 HP to 150 HP. Casing sizes from 2, 4, 6, 8, 10 & 12". Flow range up-to 20,000 LPM and head over 100 Mtrs. Motor designed have 'H' Class insulation – VFD duty and rated for continuous duties. Pumps offered in any combination of Voltage / Frequency.



**Mody Slimline "G" - SS series** Electric Submersible dewatering Pumps offers range from 1.5 HP to 150 HP. Casing sizes from 2, 4, 6, 8, 10 & 12". Flow range up-to 20,000 LPM and head over 100 Mtrs. Motor designed have 'H' Class insulation – VFD duty and rated for continuous duties. Pumps offered in any combination of Voltage / Frequency. Pumps are supplied in SS 316 / 304 construction complete.

**Mody "HM" series** Electric submersible dewatering pumps are specifically designed for mining applications and equipped with additional features to safeguard the pump instantly against High voltage, Single phasing etc. The pumps are also provided with Snore valve for extra safety of motor for non-kink in delivery line.



**Mody "MGH" Super High Head Pumps :** Pumps offered in this range are suitable for vary high head dewatering i.e. upto 180 meters.

**Mody Slurry Pumps:** We manufacture a complete line of heavy duty & light duty slurry pumps with high abrasion resistance Chrome Iron wet ends and agitators to effectively handle the heaviest of slurries up to 70% solids by weight and upto 650BHN Hardness.

**Mody Dragflow Electrical/Hydraulically Operated pumps:** We are JV partner of Dragflow Pumps, Italy and offer a range of Electric Slurry pumps and Hydraulically operated pumps fitted with or without Side Agitators / Jet ring arrangement etc. The pumps can be designed and offered to any required duty conditions.



**Mody Air-Operated Diaphragm Pumps:** Available in 1/2" - 3" Sizes in Polypropylene, PVDF, SS, Aluminium and Ductile Iron with a wide variety of Elastomers suited for the pumped fluid – these self-priming submersible and non-submersible units can even be used in Hazardous environments in the harshest of conditions.



**Mody Skid / Trolley mounted pumps** offer a wide variety of economical, dependable and highly efficient dewatering Coupled pumps. The pumps are mounted on common base plate or on Trolley as per customer requirement. Prime movers especially Engines are used as per customer's preference. The Pump suction line is fitted with Self Priming device. We ensure that our equipment is designed to stand up to a variety of conditions in a multitude of applications. Exceptional design and superior components assure that the customer receive the very best quality product for your investment.



### Contact

Email: sanjeev@modypump.com

Website: www.modypump.com



## NMDC LTD.



NMDC Ltd., a Navratna Public Sector Enterprise under Ministry of Steel, Govt. of India is the single largest producer of iron ore in India owns and operates highly mechanized iron ore mines in Chhattisgarh and Karnataka having its registered office at Hyderabad, Telangana. NMDC is considered to be one of the low cost producers of iron ore in the world. It also operates the only mechanized diamond mine in India at Panna, MP.

NMDC Ltd. is among the top performing companies in the country, till now known merely as a mining company is now busy creating an exciting course both for itself and the Nation by setting up a three-million tonne integrated steel plant at Nagarnar, Chhattisgarh.

The Company is producing about 35 million tonnes per annum of iron ore from its major iron producing units i.e. from Bailadila Sector in Chhattisgarh and Donimalai in Bellary-Hospet region in Karnataka. NMDC envisages to have iron ore production capacity of 100 million tonnes by FY30.

All of NMDC mining complexes have been rated 5 Star by Indian Bureau of Mines, Ministry of Mines which is a testimony to its scientific and sustainable mining practices.

NMDC has its own R&D Centre at Hyderabad which is recognized as a Centre of Excellence by UNIDO. All the NMDC mines and R&D Centre have ISO & EMS accreditations.

NMDC has a legacy of not only meeting but surpassing the commitments & expectations of its stake holders. All through its existence of about 63 years, NMDC has endeavored to positively uplift the lives of the communities around its areas of operations. The sentiment that Social Responsibility is an integral part of the wealth creation process and



when managed properly, can enhance the competitiveness of business, maximize the value of wealth creation to society and thereby contribute to Nation building is ingrained in the core philosophy of NMDC.

Made from natural raw iron ore through the process of mining, crushing and screening, where the iron ore is separated into lumps and fines.

Fines require sintering (conversion into crude pellets) prior to usage in blast furnaces

Made from powder that is generated during the ore extraction process, once considered waste.



**Contact**

Email: nmdccorpc@gmail.com

Website: www.nmdc.co.in



**ORBINOX INDIA PVT. LTD.**



We are a subsidiary of Orbinox SA, Spain engaged in the manufacture of Knife gate valves. With more than 45 years of experience in the industrial market worldwide, we have become a well known knife gate valve manufacturer responding to new industrial developments.

Our 35,000 Sq ft factory located in Coimbatore produces Knife gate valves from the best quality raw material. Design and engineering are done by our R&D wing located in Spain. Our product range offers you many models of Knife Gate Valves designed for various applications. These different models are available in a wide range of Material and Sizes.

Orbinox India produces more than 4000 knife gate valves every month, 60% of which are exported to European and American markets. 40% of the production are presently sold in India. We have kept a spare capacity of around 1000 valves per month considering our growth in domestic market share.

Orbinox offers a wide range of knife gate valves for handling diverse applications in the following industries.

- Power
- Paper and Pulp
- Steel
- Cement
- Mining
- Petrochemicals
- Foods and Beverages etc.,



MODEL-VG Slurry Valve DN 50- DN 1400 Ductile Iron

MODEL-WG Slurry Valve Wide Body DN 50- DN 900 Ductile Iron

We are an approved supplier of knife gate valves to major EPC's & Power producers like BHEL, NTPC, GE Power, Macawber, Thermax , KPCL, GSECL etc.,

Our mission is to meet the needs of our customers and to continue improving our products and services through teamwork, training and performance. The company's growth is balanced on years of experience from research, design, production and marketing with a firm determination to maintain recognition of its quality and service on the market and to remain competitive in the knife gate valve industry.



MODEL- HG Slurry Valve Wide Body DN 50- DN 900 Ductile Iron

MODEL-HB Bidirectional High Pressure DN 50- DN 300 Ductile Iron

MODEL-EXT Unidirectional DN-50- DN 1200 Cast Iron / Ductile Iron

MODEL-WG Slurry Valve Wide Body DN 50- DN 900 Ductile Iron

**Contact**

Email: bonsae.india@orbinox.com

Website: www.orbinox.com

**PRD RIGS INDIA PVT. LTD.**



"PRD" founded in 1972, under the leadership of Mr. T.P. Thangaraj, Chairman - PRD Groups, is a leading manufacturer of drilling and mining equipment's based in India. One of the largest manufacturers of drilling rigs for Water Well Drilling, Construction, Mining and Geotechnical Exploration.

PRD expanded its manufacturing activities with innovative products like tractor mounted piling rigs, pilot hole rigss for granite and marble segments, state of the art compact crawler mounted PRD spider 1500 drilling rig for water well drilling, Rigs for underground production drilling and blast hoel for mining, which are all well received in the perspective market segments. With the Introduction of the new machines for various applications, the company experienced steady growth and quickly became a major player within the drilling industry.

In a world of product-oriented companies that believe to give the best value with mass productions strategies, PRD RIGS INDIA still remains a customer-oriented company ready to solve any technical challenge proposed by clients with specific requirements.

Engrained in PRD, is the goal to provide its customers with products of the highest quality and exemplary customer service, something that has never changed.

- 50 Years of legacy
- 10000+ Units Sold Across the country
- 60+ Models of Rigs
- 300+ Trained Employees

**PRD Mining Series**

We have a series of mining rigs, which are designed to meet customer requirements. Our rigs are applicable for various applications like Core Drilling, Geo Explorations, Minerals and Metal Mining, Hole Matching in DSI segments, drilling for blasting in Quarries and Mines.

**PRD HC 500M & PRD HC 500ME** is specially designed for drilling vertical and horizontal holes of dia 3.5" / 4.5" for a Maximum Depth of 15 Mtrs with DTH Drilling in dimensional stone quarries.

"The Robust design and hydraulic rotation and feed system ensures Higher Penetration Rate" and the holes are drilled without deviation resulting in perfect hole matching for diamond wire cutting operations in dimensional stone quarries.

The most suitable machine for pilot hole drilling in granite quarries and successfully operating PAN India.

**Our Salient features are:**

- Perfect Hole Matching.
- Lesser Setting Time.
- Higher Penetration / Faster Drilling.
- Low Fuel Consumption.
- Robust design.



**PRD BH 15 100 - Blast Hole Drilling Rig** is

designed to enhance maximum productivity with a wide range of automated features and also a wise choice of blast hole rig for small scale mines. This is the perfect solution for your needs. Drill dia 100 - 165 mm (4 - 6.5 in) rotary and DTH holes, with a single pass depth of 4mtr.

This Blast hole drill rig can drill through rock at a fast penetration rate capable of drilling a single pass of 4.8 mtrs. It works mostly in small-scale mines and quarries. Where the drilled holes are charged with explosives and blasted.



We used the latest technology for #mining safety and features that ensure accuracy and productivity. It can drill up to - 16 m depth maximum.

**PRD Geo Technical Drilling Rigs** are Robust, self-propelled crawler mounted hydraulic rig with auto Trip drop hammer for SPT, with a multipurpose Top head drive which can be used for a wide range of drilling including coring, rotary drilling, UDS sampling / auguring, SPT, CPT and much more.

**PRD Geo-Technical Drilling Rigs** are designed specifically for Soil Investigation Application.

For India's First High Speed Rail Line Mumbai Ahmedabad High Speed rail project that will connect Maharashtra with Gujarat through 12 stations.



## Product and Company Profiles of Few of the Exhibitors (continued...)

M/s. Larsen and Turbo Pvt Ltd has won the bid to construct HSRP – Mumbai to Ahmedabad corridor in India they will have to start with Geo Technical Investigations which are performed to learn about the physical properties of the geological strata that are being considered for construction in a variety of situations.

**PRD EX65** excavator mounted drill rigs are applicable at coal mine discovery, cement mines, extracting ores, solar projects, canal works, Mostly used at rocky places also. Every Mining and Mineral company needs a rig, and PRD is here knocking the best at every time.

**PRD EX 65** Hydraulic Drill Rig attachment suitable to mount on 20 Ton Capacity & above Excavators capable to drill hole 165mm dia upto 20 mtrs drilling in coal / surface mining with 3mtrs/6mtrs/10mtrs Single Pass option, Manual Rod Changer, Water Injection System, GPS Monitoring and on-board compressor mounted on back side of Excavators and equipped with the cabin.

Can be customized as per customer requirement based on application. One operator is needed to do all things, since our Rig are equipped with the Auto Drill automatic drilling system.

### The advantage of Drilling Rig:

- Cost-effective
- Energy efficient
- Less maintenance
- Excellent quality



### Contact

Email: sales@prdrigs.com

Website: www.prdrigs.com



## PREMIUM TRANSMISSION PVT. LTD.



PREMIUM TRANSMISSION with its German subsidiary PREMIUM STEPHAN provides high quality, precision engineered power transmission solutions and products to the global engineering industry, catering to the needs of customers across the globe. These include Worm Gearbox, Helical Gearbox, Planetary Gearbox, Geared Motors, Fluid Coupling (both Constant and Variable Speed) and Lift Machines.

For decades the company has been serving its customers with high quality power transmission solutions, precision-engineered for diverse application across industries worldwide. Our products are the result of German & Indian design expertise backed up by state of art manufacturing and testing facilities across India and Germany.

PREMIUM TRANSMISSION with its Indian subsidiary PREMIUM MOTION focusses on designing and manufacturing of specialty motion enablers & control components/systems used in renewable energy industries

We have service centers spread globally under the name of PREMIUM CARE, which is a one stop destination for Servicing and Repair of gearboxes, geared motors, lift machine, fluid coupling of any make.

"We are geared up to deliver best in class solutions that set new standards in performance and reliability."

**Case hardened and profile ground steel gear with inclined tooth to transmit the torque between parallel/right angle shafts with minimum noise.**

Range: Power range up to 8765 kW

Reduction Ratio range upto max ratio 657:1

Size : From 80mm to 1150mm centre diameter

Type: Helical and Bevel Helical in Horizontal and Vertical position

Application: Slurry Mixer (Agitator), Conveyor, Barring drive, Stacker- reclaimer, etc.

**World - class quality based on our latest German technology. High power to weight ratio facilitating easy handling. Being modular in design, can be used with any other standard motor.**

Range: Power range from 0.12 kW to 90 kW.

Size: From 25 mm to 120 mm output shaft diameter

Torque: Up to 25000 Nm.

Type: Bevel Helical, Parallel Shaft and Coaxial Shaft.

Application: Light duty Conveyor, Slurry Mixer (Agitator), Inching Drive, etc.

**Transmission of power through hydro kinetic energy and in the stream of oil/water between the impeller & runner of the coupling. Fixed quantity of oil/water is used in the working circuit.**

Range: Range up to 1820 kW

Sizes: From 204mm to 1150mm circuit diameter

Type: DFC, DFP, PSS, HTC, AFC, SFC, SDFC, WDFC, SFU, STC

Application: Baring Drive, Crusher, Conveyors, Stacker- Reclaimer, etc.

**Transmission of power through hydro kinetic energy and in the stream of oil between the impeller & runner of the coupling. Quantity of oil is varied in the working circuit as per the speed requirement.**

Range: Range up to 11000 kW

Sizes: From 370 mm to 1320mm circuit diameter.

Type: PST & PSV

Application: Baring Drive, Crusher, Conveyors, Stacker- Reclaimer, etc.

**Compact Planetary Gearbox series with high power to weight ratio. Modular construction with high interchangeability of parts and bearings. Rugged design with longer service life and ease of maintenance.**

Size: Torque range up to 1kNm to 6000kNm

Reduction ratio range 3.89 :1 to 3164:1

Application: Conveyor, Stacker Reclaimer, Slew Drive, etc.

**Die-cast Aluminium case, worm gear units with electric motors/mechanical variator in double stage suitable for power ratio upto 15 kW.**

Range: Power range from 0.06 kW up to 7.5 kW

Ratio range 7.5 :1 to 4900:1

Sizes: Centre distance from 30mm up to 150mm

Torque: Up to 1600 Nm

Type: Foot and Flange Mounted Versions

Application: Light Duty Conveyor, Inching Drive, etc.

**Preferably engineered compact drive solutions from a single source comprising motor, fluid coupling, main gearbox, auxiliary geared motor, brakes, clutch, and base frame.**

Application: Conveyor, Barring Drive, Stacker Reclaimer, etc.

### Contact

Email: shaillaja.singh@premium-transmission.com

Email: corpcom@premium-transmission.com

Website: www.premium-transmission.com



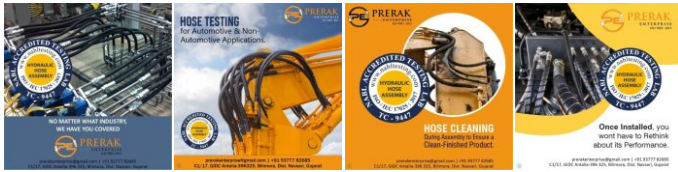
## PRERAK ENTERPRISE



Prerak Enterprise, firm located in Gujarat, India are focused in manufacturing of hydraulic hose assembly and specialized in testing the hose assembly with end fittings as per international standard SAE J-343:2017 as well as IS 12092:2018 for Proof Pressure Testing and Burst testing. We have ISO 9001:2015 System certification from SGS and we have our own testing laboratory as per ISO/IEC 17025:2017 NABL Accredited testing laboratory Vide TC – 9447. We have computerized testing machine with capacity of up to 29000 PSI for testing the hose assemblies with end fittings from 1/4" to 2" ID hose.

High Performance hydraulic hose assemblies from 1/4" to 2" ID rubber hose with end fittings as per customer's requirement with Proof pressure testing and burst testing as per Standard SAE J-343:2017 & IS 12092:2018 with computerized in-house state-of-the art testing rig with ISO/IEC 17025:2017 NABL accredited testing laboratory vide TC-9447.

## Product and Company Profiles of Few of the Exhibitors (continued...)



High Pressure Hydraulic Hose Assemblies for Earth Moving Machineries

Hydraulic Hose Assembly for Mining and Drilling Machineries.

One stop shop for hose assemblies used in Power Pack.

### Contact

Email: prerakenterprise@gmail.com

Website: www.hydraulicchase.in



## PROMAC ENGINEERING INDUSTRIES LTD.

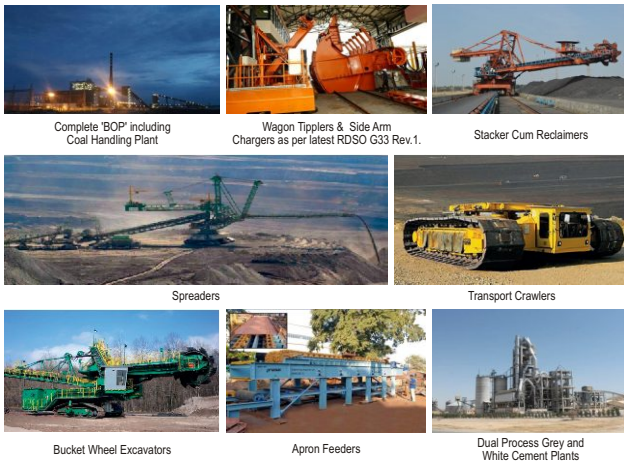


Promac Engineering Industries Limited is an EPC major, active in the Cement, Power, Steel, and Mineral Processing Sectors. We provide turnkey design, engineering and manufacturing solutions for the Heavy Engineering Process Plants and Bulk Material Handling Systems. Promac was established in the early seventies in Bengaluru, India and is equipped with a state of the art integrated manufacturing facility, and is an ISO 9001-2015 certified company. We have executed numerous Coal Handling Plants & Cement Plants in India and overseas with all machineries manufactured in house.

In the Power and Mining segment Promac has an active Collaboration and Technical tie up with Famak S.A, Poland for the Stacker-Cum-Reclaimers, Wagon Tipplers (as per G33 Rev (1), Paddle Feeders, Blender Reclaimer, Bucket Wheel Excavator, Spreader, Shiftable Conveyor, Transport Crawler etc.

For over three decades Promac has had a Technical Collaboration with M/s. Taiheiy Engineering Corporation, Japan for the Cement Sector.

Promac has built up a prestigious client base worldwide in: Brazil, South Africa, Bahrain, UAE, Sultanate of Oman, Philippines, Tanzania, Senegal, Mali, Republic Of Congo, Liberia, Sudan, Nigeria, Central African Republic, Sri Lanka, Nepal, Bangladesh, etc.



### Contact

Email: sales@promacindia.com

Website: www.promacindia.com



## REDLINE COMMUNICATIONS INC.



Redline Communications designs and manufactures powerful wide-area wireless networks for mission-critical applications in challenging locations. Redline networks are used by Mining companies on surface and underground operations, by Oil & Gas companies onshore and offshore, by municipalities to remotely monitor infrastructure, and by specialized telecom service providers to deliver premium services. Hundreds of businesses

worldwide rely on Redline to engineer, plan and deliver ruggedized, secure and reliable networks for their IoT, voice, data, and video communications needs.

### Products and services:

Today's mining environments have unprecedented demand for broadband infrastructure, a need for mission critical uptime, best in class security, seamless/uninterrupted mobility, and ample bandwidth to support multimedia applications.

Redline's Virtual Fiber™ and Private LTE (iLTE) industrial wireless solutions are purpose-built to deliver the capacity, range, real-time performance, reliability, security, and longevity necessary.

These solutions are designed and installed as an end-to-end operating network platform, specifically optimized for the unique requirements of the digital mine for both underground and surface deployments. Redline has delivered some of the world's largest, fully connected and most functionally advanced wireless solutions for digital transformation.

### Company description:

Redline Communications designs and manufactures powerful wide-area wireless networks for mission-critical applications in challenging locations. Redline networks are used by Mining companies on surface and underground operations, by Oil & Gas companies onshore and offshore, by municipalities to remotely monitor infrastructure, and by specialized telecom service providers to deliver premium services. Hundreds of businesses worldwide rely on Redline to engineer, plan and deliver ruggedized, secure and reliable networks for their IoT, voice, data, and video communications needs.

### Contact

Email: thilips@rdlcom.com

Website: www.rdlcom.com



## REVATHI EQUIPMENT LTD.



Revathi Equipment has been a leading manufacturer of blast hole drilling rigs for over four decades. Revathi CP was incorporated in 1977 with technical and financial collaboration with Chicago Pneumatic, USA, which was acquired globally in the 1980s by Atlas Copco. Revathi was an Atlas Copco group company until 2003, when it was acquired by the Renaissance Group.

Revathi produces high power range of blast hole drills for mining, deep core exploratory drilling, track drills for construction, water well drills and allied products. Since its inception Revathi has supplied over 2000 drills across the globe.

### Presence in India

Revathi currently has a sizeable market share in the addressable market in India. We have supplied over 2000 drills covering hole diameters from 102 mm – 311 mm to customers like Coal India, Singareni Collieries, Central Ground Water Board, Tata Steel, Vedanta, Penna Cement, Orient Cement, Chettinad Cement, Vasavadutta Cement, Vizac Steel Plant, Jaiprakash (JP) Group and NMDC for drilling in coal, limestone, dolomite, iron, copper, gold, zinc, phosphate, bauxite, lignite and other ores. We are executing supplies to more Cement companies like Ultratech Cement, Bharathi Cement ( Vicat group ), Zuari Cement ( Heidelberg group ) and others.

### Exports

Our drills have been exported to reputed mining companies in the USA, Australia, South Africa, Indonesia, Brazil and several countries in ME and Africa including Jordan, Nigeria, Zimbabwe, Morocco, Tunisia, etc. We have also designed and exported rigs to Bucyrus (later acquired by Caterpillar) which were sold under their brand name for about five years in multiple geographies including Australia.

### Why Revathi

We engineer our drills to suit the mine conditions of the customer, with only those features which help achieve production goals, without compromising on safety. We never push customers to take a higher capacity drill than what is needed for the task at hand. As a result, our drill is not oversized with a bigger engine, a bigger compressor, etc. than needed.

This reduces fuel consumption, in addition to of course bringing down the capital cost of the equipment.



**Optimal cost**

While the other players sometimes compete with us on the capital cost (by sourcing from China), our spares and service are generally cheaper than theirs. This leads to economies in both, capex and opex, for our customers. Customers save not only on capital cost initially but also save on fuel consumption and spares cost on an ongoing basis.

**C600H**

- A small compact production drill designed for DTH / Rotary blast hole drilling.
- Smallest carpet size six-inch class pedestal drill - first in the segment.
- Drilling diameter 4.5" to 6" @ single pass 6m and Multi pass 17m.
- Ease access to maintenance area.
- FOPS Cabin
- Tramming with good stability
- Low fuel conception
- Compressor capacity is 600 CFM @200 PSI / 100 PSI



**C615H**

- A rugged designed DTH Jackless blast hole machine designed especially for limestone quarries and cement quarries.
- Capable of drilling 4" - 6" inch @ Single pass 4m and Multi pass 16m
- Articulated boom for Pre- Splits, Toe, Crest drilling
- Construct straight holes
- Easy Manoeuvrability
- High production rate



**C620/25H**

- Heavy duty Articulated boom Jackless DTH blasthole machine for heavy duty quarrying and mining operations.
- Built to drilling 4" to 6.5" at single pass 5m & 6 m and Multi pass 30m.
- Easy Maintenance Hydraulic and compressor system
- User friendly operator control systems
- Low operation cost and low fuel conception
- High production rate



**C650H**

- Designed to drill 5" to 6.5" diameter holes by DTH drilling.
- One man operation drill and built for 24hr nonstop operation
- The C650 drill is available with 9 m and 13mtr single pass, which is first in the segment or up to 45mtr with Multi pass drilling
- The C650H is available in fully mechanical hydraulic, EOH and autonomous.
- Semi-autonomous, fully autonomous, or remotely controlled autonomous drills, being the first in this segment



**Contact**

Email: hp.chakraborty@revathi.in

Email: ravindran@revathi.in

Website: www.reldrill.com



**ROTO PUMPS LTD.**

Roto Pumps with its rich legacy of 50+ years in fluid engineering solutions is globally trusted for its highly efficient customized pumping solutions. Since its Inception, Research & Innovation are the core strengths of Roto Pumps which is deep-rooted in our DNA. Our founder Mr. Ram Ratan Gupta invented the manufacturing process of the Progressive Cavity Pumps in India. Our main motto is to constantly innovate and improve our product portfolio to serve our customers.

With its state of the art manufacturing unit based at Greater Noida, India & Ultra-



modern R&D Centre based at Noida, India, Roto Pumps is successfully exporting positive displacement pumps to 10,000+ customers across 50+ countries.

**Successfully Handling 5000+ Fluids across 25+ Industries**

Biogas, Paper, Sugar, Wastewater, Oil & Gas, Paint, Chemical, Defense & Marine, Mining & Explosives, Food & Pharmaceuticals

**Product Range**

Progressive Cavity Pumps, Twin Screw Pumps, Gear Pumps, AODD Pumps & Retrofit Spare Parts

**PROGRESSIVE CAVITY PUMPS**

Roto Progressive Cavity Pumps are designed to handle free flowing viscous as well as abrasive media for continuous or intermittent transfer duties in innumerable applications. These pumps have single rotating element which helps in delivering uniform, metered and non-pulsating flow of media.



Capacity: Up to 500 m<sup>3</sup>/hr (2,200 GPM)

Pressure: Up to 48 bar (700 PSI)

Viscosity: Up to 3,000,000 cSt

**TWIN SCREW PUMPS**

Roto Twin Screw Pumps are designed to handle wide variety of clear lubricating, non-lubricating as well as aggressive liquids. These self-priming pumps are capable of handling entrapped air, vapour and gas due to positive displacement action. Moreover, these pumps have in-built relief valve.



Capacity: Up to 940 m<sup>3</sup>/hr (4,140 GPM)

Pressure: Up to 30 bar (435 PSI)

Viscosity: Up to 100,000 cSt

**EXTERNAL GEAR PUMPS**

Roto's innovative external gear, double herringbone design pumps are compact, efficient and ensure longer service life. These pumps are specially designed to handle thin and thick liquids with minimal or no lubrication. These pumps can also be customized for high-pressure and high-temperature applications.



Capacity: Up to 120 m<sup>3</sup>/hr (530 GPM)

Pressure: Up to 11 bar (160 PSI)

Viscosity: Up to 100,000 cSt

**AIR OPERATED DOUBLE DIAPHRAGM (AODD) PUMPS**

Roto's range of air operated double diaphragm pumps are positive displacement pumps, driven by compressed air rather than electric motor. These innovative pumps are ideal choice for meeting your demands on high efficiency and low maintenance cost.



Capacity: Up to 120 m<sup>3</sup>/hr (530 GPM)

Pressure: Up to 10 bar (145 PSI)

Viscosity: Up to 10,000 cSt

**DOSING PUMPS**

These pumps are developed for low flow applications that demand high accuracies and repeatability with unique advantages of smooth and non-pulsating flow. These dosing pumps can handle clean and clear liquids.



The pump is ideal for either intermittent or continuous dosing duties. These dosing pumps can handle minimum flow as low as 0.68 LPH to 500 LPH & ensure proportionate dosing of media.

Capacity: between 0.68 – 500 lph

Pressure: up to 24 bar

**WIDE THROAT PROGRESSIVE CAVITY PUMPS**

Wide Throat type inlet allows gravity flow of highly viscous (plastico – Viscous) material on to the augur-on-coupling rod which pushes the substance to the pumping element. Wide Throat Pumps with the twin paddle bridge breaker arrangement at the top are designed for handling extremely difficult media with very high solid content and non – flowing properties.

## Product and Company Profiles of Few of the Exhibitors (continued...)

Available in close coupled and bare shaft configuration. Custom designed hopper is also available on requirement. A variety of construction materials and shaft sealing options are also available.

Capacity: up to 200 m<sup>3</sup>/hr

Pressure: up to 36 bar

### Contact

Email: marcom1@rotopumps.com

Website: www.rotopumps.com



## SENSITIVE FORGE.



Sensitive Forge is a true leader when it comes to delivering innovative Industrial and Auto-components Solutions, Manufacturing and Exporting of CLOSE DIE STEEL FORGINGS,

Since commencement of operations in 1999 having production capacity of 2500MT/Year, today 450 MT achieved., SF has achieved several milestones and today it is going to be among the largest and technological advanced manufacturers of Forges & Machined Components. We have developed various kind of Automotive, Railway, Agriculture Eq., Transmission, Earthmoving eq. etc. as per customer's drawings & specifications.



SF is considered as one of the best manufacturing group having in-house advanced technologies to develop and manufacture various engineering components with highest quality, functionality and cost effectiveness.

Sensitive Forge is ISO 9001:2015 certified company and having team of well qualified Engineers, Technicians and workers to get complete Customer Satisfaction though Continues Improvements.



### GRINDING MEDIA STEEL BALLS

Size: 40mm to 140mm.

Material : EN-8D, EN-9

### YOKE , UNIVERSAL JOINTS, HUB, YOKE SHAFT

Material: 20MnCr5, En-8, or as per specification.

We have developed more than 450 type of components.



### CLOSE DIE STEEL FORGING

### PNEUMATICS HAMMER MACHINE

### Contact

Email: mktg@sensitiveforge.com

Email: sensitiveforge@gmail.com

Website: www.sensitiveforge.com



## SKYLARK DRONES



Skylark Drones is a technology company that is building the core infrastructure for the global drone ecosystem. Our platform empowers Fortune 500 companies as well as 60+ large enterprises with drone based insights & analytics.

Skylark Drones is India's first fully compliant drone solutions provider. As one of the earliest players in the drone tech space, Skylark is ranked #4 in the world by Drone Industry Insights. Skylark Drones specializes in providing drone-based insights for large enterprises. Invested in every part of the drone ecosystem, Skylark Drones' proprietary softwares are helping some of India's largest enterprises operate more efficiently.

Skylark's mission is to unlock the economic potential of the skies. We envision a world where people and businesses do meaningful work from an open and connected sky; work that propels human productivity forward and fundamentally alters the way our worksites and cities function.

### Spectra

Spectra is an integrated drone data & insights platform to visualise worksites and perform AI-powered analytics that helps teams plan better, construct faster, and sustain longer. Anywhere. Anytime.



### Drone Mission Ops (DMO)

DMO is a full-stack drone flight solution that enables drone pilots, service providers, and enterprises to execute fast, accurate, and seamless drone missions.



### Contact

Email: mrinal@skylarkdrones.com

Website: www.skylarkdrones.com

## STM CONSTRUCTION EQUIPMENT INDIA PVT. LTD.



STM Construction Equipment was founded in 2010 in Singapore and established an Indian branch office in Navi Mumbai in 2012. The company specialises in introducing new and advanced methods from manufacturers in Europe and Japan. The main products include Xcentric Ripper for soft rock, Yamamoto Rock Splitter for hard rock, STM Rock Breakers and Darda handheld rock splitters. STM strives to provide the best possible aftersales support, both in terms of highly trained service engineers, as well as a high level of spare parts and consumable inventory. Through a close and long term cooperation with our overseas principals we can solve technical issues quickly but also give feedback to make products more suitable for Indian requirements.

Xcentric Ripper is a newly developed excavator attachment specifically designed for primary excavation of rock without the use of explosives. It is based on a patented impact vibration accumulation technology, which enables excavation in less time, at lower cost, and with minimal noise compared to conventional rock breakers. It was developed in Europe in 2009 and was introduced in India in 2012. The main applications include limestone mines and overburden removal in coal mines. It is mounted on conventional excavators and often used to replace blasting and surface miners. There are currently about 70 units working in India.



### Contact

Email: jagdish@stm-ce.com

Website: www.stm-ce.com

## TATA HITACHI

## TATA HITACHI

Reliable solutions

Tata Hitachi Construction Machinery Company Private Limited, the leader in construction equipment in India, enhances the operational performance of its customers, leading to improved profitability and competitiveness by offering constructive solutions.

Tata Hitachi is a subsidiary company of Hitachi Construction Machinery Co. Ltd., which holds 60% share and Tata Motors Ltd. holding 40%.

Tata Hitachi is focused on capitalizing the opportunity in the domestic arena for which the key market segments are excavators, wheeled products, cranes and others. Tata Hitachi's consistent growth and success has been built on the foundation of the company's ability to understand customers' needs and provide equipment alongside support solutions that increase profitability and competitiveness.

### Providing Reliable Solutions:

The Company's capabilities to deliver reliable solutions starts with the comprehensive range of machines which ensures that the customer has exactly the right kind of equipment for their needs.

Tata Hitachi also has a full - fledged Design and Development set-up for developing

## Product and Company Profiles of Few of the Exhibitors (continued...)

indigenous and collaborated equipments. Tata Hitachi is actively participating in creating the new R&D facilities at Kharagpur with the aim to make the new centre a global R&D hub. Tata Hitachi is one of the largest manufacturers of construction equipment in the country and has two manufacturing plants at – Dharwad in Karnataka, Kharagpur in West Bengal

### Providing Reliable Support:

Our endeavour is to provide reliable solutions to our customers. Our widespread network, which ensures that customers are never too far away from our centres, helps us achieve this. Tata Hitachi Dealers provide support to the customers through parts and expert service. The company also takes pride in its marketing and service network of 230+ touch points – one of the largest distribution networks in the country.

Tata Hitachi focuses on value added service offerings too- Full Maintenance Contracts, which complete the offering to customers and enable them to free up precious resources for core activities. We offer specialized reconditioning and refurbishing services to ensure that the utility of the equipment is extended and life cycle costs are brought down.

The new ZAXIS 470H offers key benefits of high quality, low fuel consumption, high durability, and exceptional operator comfort: all of which serve to ensure low running costs.

315 HP (235 KW)

Engine Power

47,100 KG

Operating Weight

1.9-3.1 m<sup>3</sup>

Bucket Capacity



ZAXIS 470H

The ZAXIS 650H provides reliable performance, great fuel economy, swift front movement and easy operation. A rugged and tough machine, this excavator is effective for challenging job sites and is suited for long term projects because of its long product life.

295 KW (400 HP)

Engine Power

58,340 KG

Operating Weight

3.3 - 3.8 m<sup>3</sup>

Bucket Capacity



ZAXIS 650H

The ZAXIS 870-5G, equipped with HIOS IIIIB hydraulic system, has an increased operating speed with less fuel consumption, resulting in greater productivity and lower running costs. It has a reliable undercarriage and strengthened upper structure. The engine is reliable and durable in challenging environments. The parallel arrangement of the radiator and oil cooler gives it a great cooling system.

360 KW (483 HP)

Engine Power

82,300 KG

Operating Weight

2.9-4.5 m<sup>3</sup>

Bucket Capacity



ZAXIS 870-5G

The 'New Techno Giant'- Tata Hitachi's EX 1200V – has been designed for absolute safety, productivity, durability and comfort. Equipped with the latest technology, this machine promises higher productivity and tough performance to take on the excavating needs of today and tomorrow.

1,650 RPM (760 HP)

Engine Power

1,09,000 KG

Operating Weight

4.0 - 6.5 m<sup>3</sup>

Bucket Capacity



EX 1200V

The EX 1900-6 is an advanced hydraulic mining excavator with a powerful engine. It offers a large bucket, a comfortable cab, strong frames, and much more to take on the world's most challenging mines and quarries.

1,086 HP

Engine Power

1,91,000 KG

Operating Weight

8.8 - 12.0 m<sup>3</sup>



EX 1900-6

### Bucket Capacity

With an environment friendly emission control engine, the EX 2600-7 delivers utmost efficiency. Its large-capacity bucket is shaped to enhance scoop and loading operations.

1,119 KW (1,500 HP)

Engine Power

2,58,000 - 2,60,000 KG

Operating Weight

17.0 m<sup>3</sup>

Bucket Capacity



EX 2600-7

Known for its extraordinary performance and dependability, the EX 3600-6 also sets a new standard in simple operations, operator comfort and much more.

1,450 KW (1,944 HP)

Engine Power

3,62,000 KG

Operating Weight

21 - 23 m<sup>3</sup>

Bucket Capacity



EX 3600-6

The Tata-Hitachi EH-600 RDTs are designed for fuel efficiency, longevity and ease of operation.

2100 RPM (289 KW)

Engine Power

58,490 KG

Operating Weight

35.3 US Tons

Bucket Capacity



EH 600

Hitachi's EH 3500AC-3 Rigid Dump Truck (RDT) is a mid-range truck with a nominal payload of 181 tonnes. The machine is known for its superior hauling capabilities. The Hitachi engineered AC drives make the hauler a valuable asset in mining operations.

1,491-1,510 KW

Engine Power

3,22,000 KG

Operating Weight

200 Ton (nominal payload)

Bucket Capacity



EH 3500AC-3

The EH 4000AC-3 is one of Hitachi's larger Rigid Dump Trucks (RDTs) with a nominal payload of over 220 tonnes. Better performance, higher availability, and significant reduction in maintenance and operating costs – all result in a lower cost per tonne and a higher return on investment.

1,864 KW (2,500 HP)

Engine Power

3,84,000 KG

Operating Weight

221 Ton (nominal payload)

Bucket Capacity



EH 4000AC-3

The EH 5000AC-3 Rigid Dump Truck (RDT) is the largest of the Hitachi RDTs with a nominal payload of over 296 tonnes, and a reputation in the surface mining industry. The truck proves to be exceedingly capable and reliable with drive control systems, economic advantages, a high-powered engine and a strong-structured body.

2,125 KW (2,850 HP)

Engine Power

5,00,000 KG

Operating Weight

1.5 - 3.0 m<sup>3</sup>

Bucket Capacity



EH 5000AC-3

### Contact

Email: [rahul.ranjan2@tatahitachi.co.in](mailto:rahul.ranjan2@tatahitachi.co.in)

Website: [www.tatahitachi.co.in](http://www.tatahitachi.co.in)

**TECKNOWELD ALLOYS (INDIA) PVT. LTD.**



Tecknoweld, World's Largest Leading Manufacturer of Wear Plates. We cater to the needs of wear protection requirements of core sector industries like Power, Cement, Mining, Steel, Earth Moving machineries and their OEMs in India and as well as all over the world.

From a modest beginning in the 90's, Tecknoweld have come a long way to become world's top line Company in Wear Protection with a capacity to manufacture over 300,000 sq.m/annum.

Standard and custom made alloy chemistries to meet client's application needs. Ready to install wear parts in different forms & shapes, Cost effective by performance compared to Manganese steel, Stainless steel, hi-Chrome, Ni-hard, quenched and tempered Steel

**OUR VISION**

To be acknowledged as Global Leader in wear protection

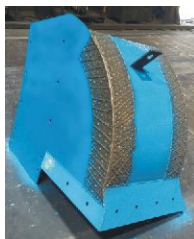
**OUR MISSION**

Design and deliver cutting-edge wear-resistant solutions to global core sector industries.

**OUR STRATEGY**

Reaching out to global core sector industries and provide them with on-time, cost-effective, state of the art wear solutions.

Tecknoweld products cover an entire spectrum of hard facing including simple Chromium Carbides, complex Carbides, Titanium Carbides, Tungsten Carbides, Chrome Tungsten Carbides and PTA applied Tungsten Carbides.



**WEAR BUCKET:**

Earth moving machinery wear bucket with the composition of ULTRA PLATE 2000. Used in Minings & Crushing application at material handling areas with excellent abrasive and impact resistance with various size and designs.



**STUD JOB:**

Wear plates with stud for easy fixing in original mining equipments to avoid damaging of machinery and ensure the efficiency of the machine by reducing the down time. A fine combination of good abrasion and temperature withstanding composition with our ULTRA PLATE 2000.



**SPLITTER PLATE:**

Splitter Plate assembly - COAL NOZZLE TIP 660 MW UNIT with 8mm SS-310 + 4mm Hard overlay. With the composition of ULTRA PLATE 4000 to withstand high temperature in coal fired thermal power stations.



**SCREEN PLATE:**

Screen plate (shredder) with mild steel flanges in the composition of ULTRA PLATE 3000 with Rich primary carbides used in baling & shearing machines.



**SHELL FABRICATION:**

Fabrication of Shell with MOC Size:- Ø1200X4060 with the thick of 8 on 10 Of ULTRA PLATE 6000 with Rich primary M7C3 carbides along with W, Nb, Mo and B carbides.



**RING WITH DEFLECTORS:**

Ring with Deflectors in composition of ULTRA PLATE 5000 H with rich primary M7C3 carbides + Boron carbides. Used in Steel, Power and cement applications.

**Contact**

Email: [chennai@tecknoweld.com](mailto:chennai@tecknoweld.com)

Website: [www.tecknoweld.com](http://www.tecknoweld.com)

**THEJO ENGINEERING LTD.**



We are pioneers of conveyor belt Splicing by cold vulcanizing process, In-situ pulley lagging & In-situ recapping of conveyor belts and Leading industrial solution provider for belt conveyor based bulk material handling systems, mining & mineral processing and corrosion protection application.

We are one of the few companies in the sub-continent offering manufacturing, marketing and servicing activities under one roof. Thejo has global presence with subsidiaries in Australia, Saudi Arabia, Brazil and Chile.

Headquartered in Chennai with 5 manufacturing plants and R&D Centre, approved by the Department of Scientific and Industrial Research, Ministry of Science and Technology of India (DSIR). Thejo was started as a partnership firm and has now transformed into a Listed Public Limited company. We are the First Company to list in National Stock Exchange of India – EMERGE platform.

**CONVEYOR CARE**

From raw material handling to final product dispatch, Conveyor systems forms the lifeline to any industry where material handling is involved. Belts are the most expensive part of a conveyor system. Regular maintenance and upkeep plays a very important role in increasing the service life of a conveyor system. Thejo offers a host of solutions for proper installation, maintenance and upkeep of belt conveyors, under our Conveyor Care division. Thejo's Conveyor Care Solutions include:

- Belt Conveyor Splicing and Repair Chemicals
- Belt Conveyor vulcanising equipment
- Belt Conveyor pulley protection
- Belt Conveyor handling equipment (Belt Coiler & De-Coiler)
- Belt Conveyor splicing and repair tools



**TRANSFER POINT SOLUTIONS**

Transfer point is a vital part of any conveyor system, influencing the efficiency and productivity of the entire material handling system. A well designed transfer point is essential to eliminate fugitive material and thereby increasing the efficiency of the conveyor system.

- Our Transfer Point Solutions offer:
- Elimination of spillage and carry back of material
- Tracking of the belt conveyor
- Effective load zone support system
- Safe and dust free work environment.
- Increased efficiency of the conveyor.



**ABRASION AND WEAR PROTECTION**

Impact, Wear & Abrasion Solution products marketed globally, help to optimize process performance while achieving the targets of customers. The products are tailored to suit the customer specific needs and expectations.

- Wear solutions offering in:
- Rubber
- Composite Liners (Rubber & Alloy Steel), (Rubber & Ceramics), (PU&Ceramics)
- Ceramic
- Polyurethane
- UHMWPE etc.



**SCREENING SOLUTIONS**

Grator screen panels are designed and engineered with decades of experience in applications covering a wide variety of duty conditions. Our objective is to reduce the cost-per-hourly tonnage in separation, reduction, sizing, washing or De-watering applications. GRATATOR products are available for the following applications;

- Scalping and Sizing
- Dewatering
- Flip Flow
- Trommels
- Grator Screening Medias come in Rubber or Polyurethane.



**FILTRATION**

HIPO' brand of filtration solution products marketed globally, help to optimize process while meeting all requirements and targets of our customers. The products are tailored to suit and meet the customer specific needs

## Product and Company Profiles of Few of the Exhibitors (continued...)

and expectations.

HIPO spares retrofit standard spares of different OEMs like Outotec-Larox, Diemme filtration, Metso, Andritz etc., with higher quality parts at economic prices.

### CORROSION PROTECTION

Thejo is among the few organisations offering a comprehensive line of corrosion resistant rubber linings in both hot and cold process. Since inception, Thejo has continuously researched and developed products to create and offer economic solutions to the industry.

Thejo have the unique advantage of formulating and mixing its own rubber compounds, manufacturing the various rubber lining materials, fabricating vessels and pipelines etc., carrying out the rubber lining at its state-of-the-art factories, ensuring production and cost control without compromise to quality.

### DUST SUPPRESSION

Thejo offers High Pressure Fogging System for suppression of dust arising during bulk material handling.

### FLOW PROMOTION

Thejo offers a complete series of Air Cannons featuring tried and tested designs combined with latest cutting-edge technology.

### Contact

Email: s.kuriakose@thejo-engg.com

Website: www.thejo-engg.com



## USHA MARTIN LTD.



Usha Martin is one of the world's leading wire rope manufacturer. More than six decades of excellence, today we are a multi-unit and multi-product organisation. The wire rope manufacturing facilities located in Ranchi, Hoshiarpur, Dubai, Bangkok and UK produces one of the widest range of wire ropes in the world. The infrastructural facilities are equipped with the latest state-of-the-art high capacity machines to manufacture world-class products. Long standing application in diverse sectors like Mining, Oil & Offshore, Crane, Elevator, Infrastructure etc. is the testimony of our expertise in manufacturing high quality wire rope products and offering value added services.

When it comes to critical operations in mining, the global mining companies rely on us. Our wire ropes are designed to perform in harsh mining conditions in both surface and underground mining. No matter, how critical your application is, Usha Martin's expertise in design and manufacturing of mining rope is always there to meet your requirement. All ropes undergo rigorous testing procedures to meet the technical specifications, as per our customer demand in today's challenging working conditions.

### Our ropes provide:

- High resistance to fatigue, wear and abrasion.
- Low downtime.
- Long operational life.



### SURFACE MINING :

Dragline: Hoist rope, Drag rope, Dump rope.

Shovel: Hoist rope, Crowd rope/Retract rope, Trip rope, Boom suspension rope.

Bucket Excavator: Boom suspension Rope.

### UNDERGROUND MINING :

- Conventional Winder: Hoist rope
- Friction Winder (Ground/Tower) mounted: Hoist rope, Balance rope, Guide rope
- Chair Lift, Chair Car System: Haulage rope
- Direct Hauling System: Haulage Rope



### MATERIAL TRANSPORTATION :

- Aerial Transportation Ropes
- Monocable System: Haulage ropes
- Bicable System: Haulage rope, Track rope
- Cable belt conveying system : Round strand ropes



### Contact

Email: rajatava\_mishra@ushamartin.co.in

Website: www.ushamartin.com

## V ENGINEERING ENTERPRISES



We are manufactures of Mining Buckets for Loaders, Shovels and Excavators also makes Long reach and Short Reach as per Customer requirement. Company Profile attached for your ready reference. We are located at Visakhapatnam, Andhra Pradesh, can supply our products to anywhere in the World with high quality material and at competitive price. We are mainly using GET Kits from Hensley USA and other high-quality products, steel plates mainly from Japan and Europe make. **For wear resistance we use Hard Steel of Hardox make 400/450/500 Grade** as per customer requirement.

We are vendors for L&T Mining and supply 12 and 9 CuM Buckets for PC2000 and 6.7 CuM buckets for PC1250 Excavators. We also supply shovel and backhoe buckets to MCL, CCL, NMDC and other Corporates. Special purpose Buckets like High Temperature Slag Bucket, Scooped Bucket, Perforated Bucket, Grapple, Side Dump Bucket, Trapezoidal Bucket etc. are some of our Products.

Our Products for **Mining Excavators** include:

**Backhoe Buckets – sizes up to 12 cum. Special purpose bucket designs can also be done.**

**Shovel Buckets (front and back) – up to 6.5 cum**

**Wheel Loader Bucket – up to 6 cum.**

Our Products for **Earthmoving Excavators** include:

**Bucket – Backhoe, Shovel and Loader**

**Boom – Standard, extended and short sizes as per custom design**

**Arm – Standard, extended and short sizes as per custom design**

**Special purpose Buckets - Perforated Buckets, Grapple Buckets, Side Dump Buckets, Reverse Dump Buckets,**

**Scoop Buckets etc.**

**Ripper, Control Rod, Track Guard, Pins and Bushes, Cutting Edges etc.**

We follow standard quality procedures in all stages of fabrication process from material purchase till final coat of painting. We purchase raw material from reliable sources and thus reduce unnecessary downtime for customers. Our buckets come with a warranty of 6 months for workmanship and raw material defects. We are looking ahead to work along with you for your requirements of mining equipment Buckets.

12CuM Backhoe Bucket for PC2000 Machine supplied to M/s. L&T Mining Division.

6.7CuM Backhoe Bucket Hard Bucket for PC1250 M/s. L&T Mining Division.

Grapple having Loading capacity of 5 to 6 Tons Supplied to M/s. ITD Cementation for Vizhinjam Sea Port Project.

6.1CuM Shovel Bucket for BE1000 Machine supplied to M/s. MCL.

6.3 CuM. Hot Slag handling Loader bucket for Volvo 988k supplied to M/s. Harsco.

Side Dump Bucket 2.2 CuM. For Liebherr L550 Machine supplied to M/s. Prathima Infra. Perfect for working in congested work sites. (First time Make in India)

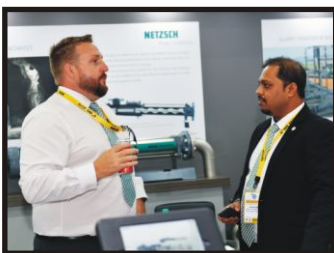
### Contact

Email: thomas@vee.co.in

Website: www.vee.co.in



## Few Glimpses of Last Edition



## Few Glimpses of Last Edition



## Facts & Figures - Last Edition

Over 15,180 sqm. Exhibition Display Area	226 Exhibitors	18,139 Footfalls	20 Countries	6 Country Pavilions
Over 60 Technical Presentations	500+ Congress Delegates	Buyer Seller Meet with Major Players	Participation of Major Coal Producers	Participation of Major Machinery Manufacturers

### Country Pavilions by



### Focus States

## Testimonials - Last Edition



Very attractive. Very hopeful of getting more investments in sector with this showcasing...

**Pralhad Joshi**

Hon'ble Minister of Coal, Mines and Parliamentary Affairs  
Government of India



Nicely done. Mega show. Wish you all success...

**Aboobacker Siddique P, IAS**

Secretary, Mines & Geology, Government of Jharkhand



IME and Asian Mining Congress are important and world renowned events, whose reach and potential regularly attract Czech Republic's mining and extraction companies to find right partners from all over India...

**H.E. Milan Hovorka**

Ambassador of Czech Republic in New Delhi



Great Exhibition...

**Sanjeev Chopra, IAS**

Chairman, Odisha Mining Corporation Ltd.  
& Principal Secretary (Homes), Government of Odisha



Australia is delighted to be a participant in AMC and IME 2019. India is one of the most important markets for Australian mining equipment, technology and service (METS) companies. I am very pleased that Australia was well represented by many METs producers at AMC and IME this year. They made excellent new business contacts and highly impressed of the business opportunities offered...

**H.E. Andrew Ford**

Consul General, Australian Consulate - General, Kolkata



Nice presentation. It would go a longway in furthering the cause of mining industry...

**Anil Kumar Jha**

Chairman & Managing Director, Coal India Ltd.  
President, MGMI



We are honoured to be part of this year's IME, the 8<sup>th</sup> edition. Our experience has been extremely positive and we found the event of significant networking value for engaging prospective investors and for our capital equipment manufacturing industry. Going forward, we would highly recommend attendance of this event, and we look forward to future participation in the same. It is evident that several local and global players are attending this event which enable us to establish contacts that are conducive to growing our industry's footprint in India and abroad...

**Ben Joubert**

Deputy High Commissioner & Minister Plenipotentiary  
South African High Commission



Really appreciate the efforts of TAFCON for organising 8<sup>th</sup> IME 2019 successfully; their dedication have placed the IME to clinch the very high honours both at National & International forums. Look forward for next edition...

**P.K. Sinha**

Chairman & Managing Director, Northern Coalfields Ltd.



Compliments on a very efficiently organised fair in ample and spacious premises, which was praised by German exhibitors we talked to. For suppliers of the mining industry participant in IME certainly remains a must...

**Dr. Michael Feiner**

Consul General of the Federal Republic of Germany, Kolkata



A wonderfully organised exhibition having all that the mining industry needs on display...

**U. Kumar**

Former CMD, SECL & NCL



Privileged and honoured to attend a well organised and wonderful event. It has set new standards of excellence. Congratulations and best wishes to the organisers...

**Amitava Mukherjee**

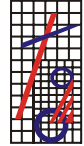
Director Finance, NMDC Ltd.



# Our Forthcoming Event Next Year

## A FOCUSED EVENT ON DEFENCE | TRANSPORT | ENERGY | HEAT TREATMENT

ORGANISED BY



TAFCON



Presents

4th Edition

14th Edition

# MET & HTS

[www.metindiaexpo.com](http://www.metindiaexpo.com)

[www.htsindiaexpo.com](http://www.htsindiaexpo.com)

International Exhibitions & Conferences on Materials, Engineering, Technology and Heat Treatment

Follow us:



**Wed. 2<sup>nd</sup> - Fri. 4<sup>th</sup> November 2022**

**Bombay Exhibition Centre, Mumbai, India**

FOCUS SECTORS

DEFENCE



TRANSPORT



ENERGY



HEAT TREATMENT



Expected Participation:

300\*  
Stalls

10\*  
Countries

30\*  
Technical Sessions

500\*  
Delegates

10,000\*  
Footfalls

5\*  
Country Pavilions

Supported By



Department of Science & Technology  
Department of Scientific and Industrial Research  
Ministry of Defence | Ministry of Railways\*  
Ministry of Road Transport and Highways  
Ministry of Power | Ministry of Steel  
Ministry of Mines | Ministry of Shipping  
Ministry of Micro, Small and Medium Enterprises  
GOVERNMENT OF INDIA



Title Sponsor

JSW JSW Steel JSW Energy JSW Cement

JSW Infrastructure JSW Foundation

Gold Sponsor

megatherm

Innovation Pavilion Powered By



Industry Support

INTERNATIONAL PARTNER



Stall Bookings Now Open

Contact at: [metexpo@tafcon.in](mailto:metexpo@tafcon.in)

[www.metindiaexpo.com](http://www.metindiaexpo.com)

[www.htsindiaexpo.com](http://www.htsindiaexpo.com)

## Exhibition Venue

New Town Eco Park is an urban park in Rajarhat, Kolkata. The park is situated on a 480 acres (190 ha) plot and is surrounded by a 104 acres (42 ha) waterbody with an island in the middle. The Eco park is located along the Major Arterial Road in Action Area - II of New Town, Kolkata. The park is surrounded by the Kolkata International Convention Centre and the Kolkata Museum of Modern Art on the North, the upcoming Central Business District and International Financial Hub on the east, and existing human settlement of Jatragachi / Hatiara on the South and West.



## About Organisers



### THE MINING, GEOLOGICAL & METALLURGICAL INSTITUTE OF INDIA (MGMI)

MGMI, the oldest institute of its kind in Asia has been promoting the cause of the mineral industry since its inception on 16 January 1906. It has been on the forefront of professional societies in mining and geosciences around the world. MGMI has always provided a forum for sharing experiences and learning of the latest in best practices and technology. The Institute presently has more 3,000 members serving the mining, minerals and metallurgical industry and diversified its valued added activities in various fields. The institute is having its headquarter and one of its branch in Kolkata and 18 more branches throughout the country.



### TAFCON PROJECTS INDIA PVT. LTD.

TAFCON is a professionally managed company with over six decades of experience and expertise in organising International Trade Fairs and Conferences in India and overseas, on various subjects namely Mining; Minerals; Metals; Materials; Defence; Heat Treatment; Foundry; Manufacturing; Surface Engineering, Paints & Coating; Packaging; Printing; Environment; Paper; Beauty; Lifestyle; Tot Teen & Mom; Education; Medical & Healthcare; Poultry, Dairy & Food Technology; Travel & Tourism; etc.

Media  
Partners ▶

99 PRODUCT TODAY

CIA  
CONSTRUCTION INDIA ASIA

COAL  
CONSTRUCTION INDIA ASIA

WWW.ECOSMOWORLD.COM  
INDIA'S LEADING INFRASTRUCTURE PORTAL

CM  
CONSTRUCTION MIRROR

CONSTRUCTION TIMES

CT TODAY

EPC World

EQUIPMENT TIMES

MINING & QUARRY  
WORLD

PROJECTS  
MIRROR

STEEL & METALLURGY  
A COMPLETE STEEL MAGAZINE

WORLD  
COAL

## Contact Us

For Congress:

**THE MINING, GEOLOGICAL & METALLURGICAL INSTITUTE OF INDIA**

GN-38/4, Sector-V, Salt Lake, Kolkata - 700091, West Bengal, India

Tel: +91-33-23573482 / 3987 / 6518

Email: office@mgmiindia.in

Website: www.mgmiindia.in

For Exhibition:

**TAFCON PROJECTS INDIA PVT. LTD.**

923 & 923A, Devika Tower, 6 Nehru Place, New Delhi - 110019, India

Tel: +91-11-49857777 (50 Lines)

Email: miningexpo@tafcon.in

Website: www.tafcon.in