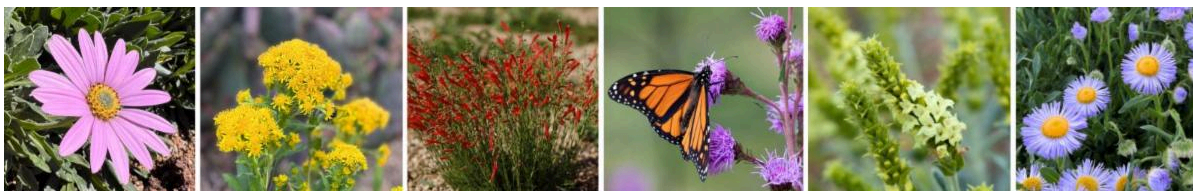


Plant Select®

Smart plants for the right places

CLICK TO SEARCH RIGHT PLANT RIGHT PLACE

If you're new to our newsletter, cheers! For 29 years, our nonprofit has tested and selected plants that thrive in the intermountain regions and high plains, so you can create waterwise landscapes that are beautiful, low maintenance and have a positive environmental impact—no matter your skill level.



Plant Select's goal is to create smart plant choices for a new American landscape inspired by the Rocky Mountain region

A warm welcome to our new Plant Select members:

- **Vital Land Studio** - Denver/Boulder, Colo. - Landscape Professional Member
- **Alesa Locklear** - Individual Ambassador
- **Alexandra Santos** - Individual Ambassador
- **Andy Vieth** - Individual Ambassador
- **Carmen Bell** - Individual Ambassador
- **Erin Mahan** - Individual Ambassador
- **Kim Baldwin** - Individual Ambassador
- **Lynn Walters** - Individual Ambassador
- **Marcy Engelstein** - Individual Ambassador
- **Pamela Goodson** - Individual Ambassador
- **Sarah McCracken** - Individual Ambassador

And thanks to all who've renewed their memberships!

Learn how to become a Plant Select member: Landscape Professional, Retail, Wholesale, Mail Order, Local Government or Individual Ambassador

Introducing the 2026 Plant Select plants

Low water, big impact!

We're excited to share our 2026 collection with you. You'll find four perennials and a shrub—including native plants and high elevation plants—that have excelled in the Plant Select trials. Look for these newbies this spring.



Not every plant makes a great landscape plant in the Interior West. We seek out diverse plants that are low water, resilient, beautiful, sustainable... and we put them to the test.

We trial them for 3+ years and only select the top performers, so you can achieve a stunning landscape with fewer resources and less fuss!

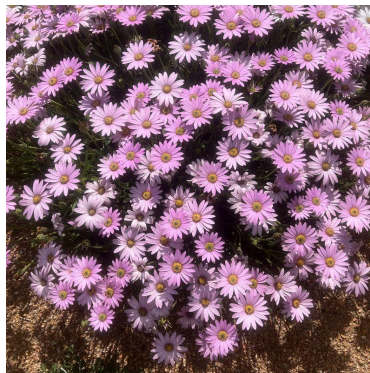
[Watch quick video](#)

[Get plant details](#)

New plants at a glance



FLATIRON™ sand cherry
Prunus pumila var. *besseyi*
'Boulder Weeping'



MANDY™ sun daisy
Osteospermum 'Mandy' PPAF
Prolific May bloomer. Will flower lightly all season with a



GRANITA® pussytoes
Antennaria dimorpha
'PJS03S'

Ground-hugging native sand cherry with cheery spring blooms and vibrant red fall color.

little deadheading.

Native groundcover with tight, silver-green foliage and flowers that sit on foliage. (No maintenance!)



UNFORGETTABLE™
hummingbird trumpet

Epilobium x canum 'PUND03S'

Late season stunner with an upright form, profuse flowering and exceptional ability to attract hummingbirds.



Silver Shield French sorrel
Rumex scutatus 'Silver Shield'

Striking perennial herb with silver, shield-shaped leaves. This accent plant brightens dry, shady spots, as well as sunny areas. Edible, tangy leaves.

Explore the new plants

Your plant questions... answered!

"How do your native sand cherries compare?"

FLATIRON™ and PAWNEE BUTTES® sand cherries are both versatile shrubs. They thrive in tough conditions (like low water and tricky soils), and they're low maintenance. Plus, they produce spring flowers that are of special value to native bees.

Some ways the shrubs differ:



FLATIRON™ sand cherry
Prunus pumila var. *besseyi* 'Boulder Weeping'

Form: Hugs the ground (just 10" tall) with lateral stem growth.

Width: 6-8'. Wider spreading than PAWNEE BUTTES®. Ideal for spaces where a very low



PAWNEE BUTTES® sand cherry
Prunus pumila var. *besseyi* 'P011S'

Form: Has a taller center (15"-18") that cascades down.

Width: 4-6'. Doesn't grow as wide as FLATIRON™. A better fit for medians and

groundcover shrub is desired and it has room to expand.

Berries: More abundant

Fall color: Vibrant cherry red

Native provenance:

Colorado's Front Range foothills (selected from a wild population)

urbanscapes where spaces are defined or confined.

Berries: Less abundant

Fall color: Cayenne, russet & red tones

Native provenance:

Colorado's northeastern plains (selected from a wild population)

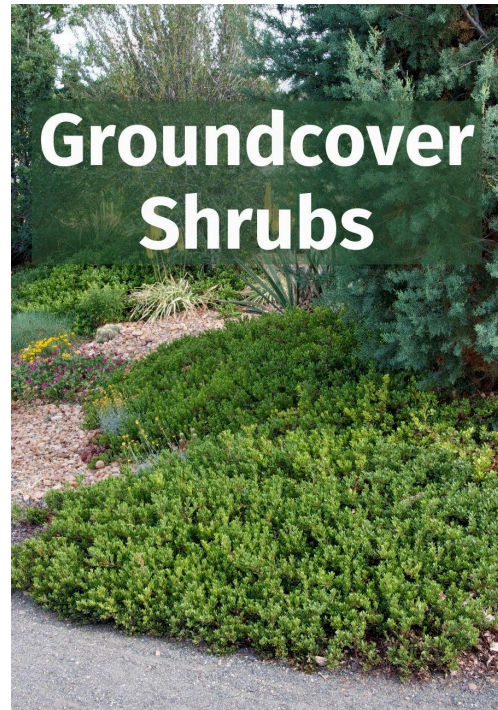
Short but mighty

Five groundcover shrubs for multiple seasons of beauty

Winter is an ideal time to look around and ask, "Could my landscape use more texture, structure or interest?"

In the latest issue of Utah's *Bloom Gardens* magazine, we explore five groundcover shrubs that add beauty and purpose across seasons.

[Read article](#)



Landscaping conferences that may interest you



Upcoming Events

Pictured: [Littleleaf mountain mahogany](#) (*Cercocarpus intricatus*) and [Chieftain manzanita](#) (*Arctostaphylos x coloradensis* 'Chieftain').

[Idaho Horticulture Expo 2026](#)

Boise, Idaho
January 21-23

[ProGreen EXPO 2026*](#)

Denver, Colorado
February 3-5

* Look for the Plant Select booth, and join us for these sessions:

- **Wed, Feb. 4 at 1:30 pm MT:**
Remarkable and Resilient: The Latest From Plant Select
- **Wed, Feb. 4 at 3:30 pm MT:**
Adapting Front Range Landscapes to a Changing Climate

[Rocky Mountain Green Expo](#)

Casper, Wyoming
February 11-12

[Landscaping With Colorado Native Plants Conference](#)

Denver, Colorado
February 28

[Annual Create Beauty Design Conference](#)

Longmont, Colorado
March 6

Friendly reminder

If it's been warm, dry or windy, some plants may need a drink

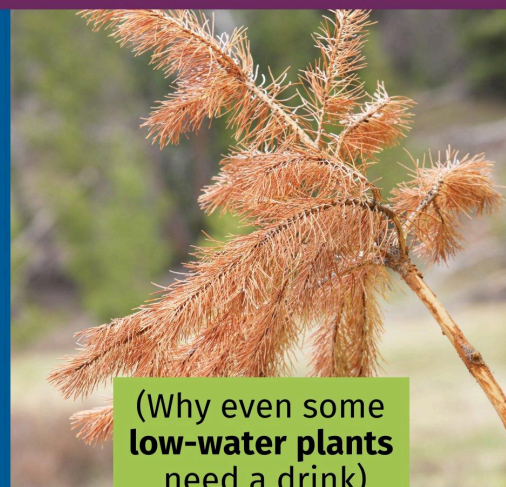
For many of us in the Interior West, we've had an exceptionally warm, dry and windy winter so far.

If you have new plants in your landscape—especially shrubs and trees—they may benefit from winter watering.

Winter watering tips

Winter Watering Tips

For mild, dry winters



(Why even some low-water plants need a drink)

plantselect.org



Become a Plant Select member

Show your support for resilient western landscapes

"As we go, so goes the world, for the world is us. The revolution that will save the world is ultimately a personal one." - *Marianne Williamson*

Our nonprofit exists because of our members—from growers and garden centers, to landscape professionals and horticulturists, to individual gardeners.

[Please join Plant Select as a member in 2026.](#) Your support helps fund the research, trials and advancement of diverse, climate-resilient plants—including native introductions.

Be part of this collaborative effort to help more gardeners create stunning and resilient landscapes that use fewer resources and make a positive environmental impact.

Learn more and join us!

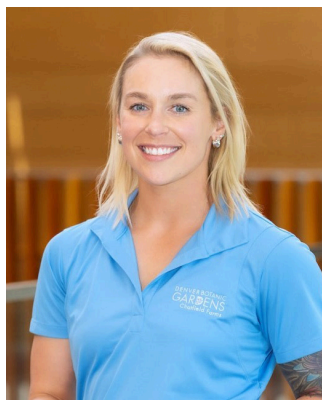
Now's a great time to join

Our winter webinar series for Plant Select members starts January 15



**JANUARY 15:
Pollinator-Friendly
Landscape Design**

Deryn Davidson from
[Colorado State University
Extension](#)



**JANUARY 29:
Well-Behaved Prairie and
Plains Plants for the Home
Garden**

Grace Johnson of [Denver
Botanic Gardens Chatfield
Farms](#)



**FEBRUARY 19:
The Latest From Plant
Select: Insights Into New
Plants and Western
Landscapes**

Ross Shrigley from [Plant
Select](#)



MARCH 12:
**The Wonders of Waterwise Irrigation:
Ways to Improve Your Watering Efficiency**

Eric Olson from [Fort Collins Utilities](#)
(Fort Collins, Colo.)



MARCH 26:
**Creating Wildflower Landscapes From
Seed**

Jessica Romer from [Applewood Seed
Company](#).

Become a Plant Select member

Smart plants for the right places
Resilient trees, please



HOT WINGS®
Tatarian maple



Woodward
columnar juniper



SUCKER PUNCH®
chokecherry

Botanical names:

Acer tataricum 'GarAnn' PP 15,023 | *Juniperus scopulorum* 'Woodward' | *Prunus* 'P002S' PP25,767

Quick links

Fall season
extenders

Native plants

Hummingbird
plants

Share this e-newsletter:



Share This Email



Share This Email



Share This Email

% Colorado State University
1173 Campus Delivery
Fort Collins, CO 80523-1173
PH: (970)-481-3429

DENVER BOTANIC
GARDENS

Colorado
State
University



Plant Select | c/o Colorado State University 1173 Campus Delivery | Fort Collins, CO 80523-1173 US

[Unsubscribe](#) | [Update Profile](#) | [Constant Contact Data Notice](#)