



# Plant Select®

Smart plants for the right places

CLICK TO SEARCH RIGHT PLANT RIGHT PLACE

*If you're new to our newsletter, cheers! For 28 years, our nonprofit has tested and selected plants that thrive in the intermountain regions and high plains, so you can create waterwise landscapes that are beautiful, low maintenance and have a positive environmental impact—no matter your skill level.*

---

**Plant Select's goal is to create smart plant choices for a new American landscape inspired by the Rocky Mountain region**

---

**A warm welcome to our new Plant Select members:**

- Debra Grove – Individual Ambassador
- Jaye Leon – Individual Ambassador

**And thanks to all who've renewed their memberships!**

[Learn how to become a Plant Select member](#) Landscape Professional, Retail, Wholesale, Mail Order, Local Government or Individual Ambassador

---

**Bring on late fall color**  
**Low-water plants that shine in November and even December**

Many plants look great until a hard freeze. Then they call it quits, turning brown and withering away. But there are a few plants that use temperature swings to turn into the life of the party. If you want to amp up your November and December gardens during these long, extended autumns, here are late season beauties to consider.





**Dalmation pink cranesbill**  
*Geranium dalmaticum*

Green leaves turn vibrant shades of pink and red in late fall. The color can last well into winter.



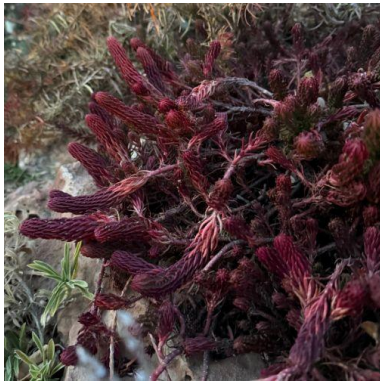
**Leprechaun southernwood**  
*Artemisia abrotanum*  
'Leprechaun'

Kelly green leaves can give way to showy amber hues that last about 3-4 weeks.



**KANNAH® CREEK buckwheat**  
*Eriogonum umbellatum*  
var. *aureum* 'Psdawns'

Green leaves turn rosy pink in late fall and a deep red hue in winter.



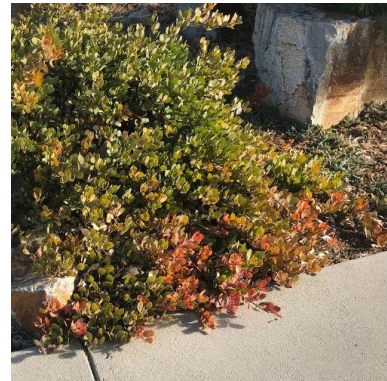
**WINTER FIRE® sedum**  
*Petrosedum rupestre* 'Rice Creek'

Succulent, rustic green leaves change to ember red in autumn and dark burgundy by winter.



**FREEDA® Caterpillar grass**  
*Harpochloa falx* 'Compact Black'

Grass blades turn a deep purple hue and ultimately chocolate brown.



**Chieftain manzanita**  
*Arctostaphylos x coloradensis* 'Chieftain'

Some of Chieftain's leaves can begin to turn amber. The color can grow more visible as it gets colder.

## In the garden with Grace

### Create a fourth season of interest

Winter gardens don't have to be barren and boring!

In this new video, Horticulturist **Grace Johnson** of [Denver Botanic Gardens](#) [Chatfield Farms](#) explores types of plants that can add big interest to winter gardens.





## 6 ways to ease up on fall yard cleanup

Good for winter curb appeal—and Mama Nature too!

You may have heard that it's good to lighten up on fall yard cleanup, but what if you aren't ready to go full-on naturalistic? What if you (or your sweetie) likes it tidy?

Here are 6 simple ways to ease back on fall yard tasks, while still keeping some order. These are easy ways to create (or maintain) winter curb appeal, and you'll support overwintering birds and pollinators along the way. Win, win.



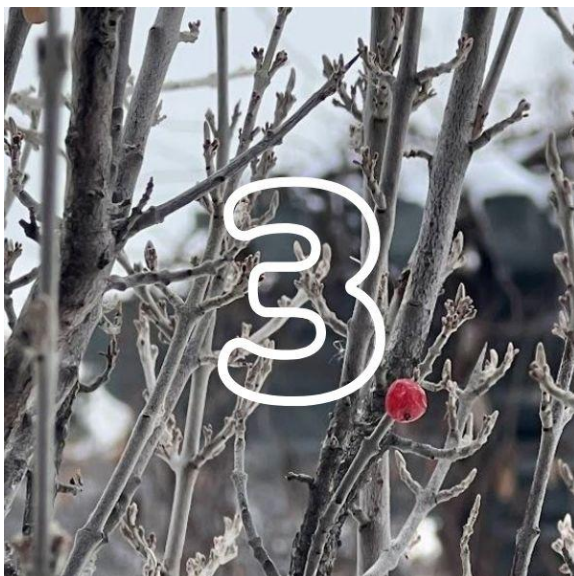
### #1: Leave your ornamental grasses standing over winter.

Grasses keep landscapes captivating! They add movement and texture. Plus, they can serve as restaurants and hotels for overwintering birds and insects.



### #2: Keep some of your perennials standing over winter.

You'll make your winter landscape more interesting with different shapes, textures and colors. Plus, seed heads can feed overwintering birds, and some stems can shelter slumbering insects.





### #3: Look for places where shrubs and trees could add more interest.

Shrubs and trees help create beauty and order in winter landscapes. And bonus, these plants can offer shelter for birds and beneficial insects. In some cases, they also provide food for birds.



### #5: Clean up the edges of your yard that people see, but leave other areas more natural.

To show intention, you could tidy up along your driveway, walkway and sidewalk, but leave the middle and back parts of your gardens (as well as under shrubs) untouched.

### #4: Strategically move leaves into shrub/tree beds or back corners.

Leaves tend to blend into shrub beds and back corners of yards. They help insulate overwintering insects and create a place for birds to forage. (Just avoid thick leaf piles on your lawn.)



### #6: Tidy up your front yard, but not your back yard.

Another way to strike a balance... Clean up your front landscape, but leave your back yard in a more natural state over winter.

---

Explore [Simple Ways to Ease Into Fall and Winter Yard Cleanup for Birds](#) on the Audubon Rockies website for more on each of these tips!



*Worth noting... there isn't a one-size-fits-all approach to western yard care. If you live in a wildland-urban interface, be sure to consider [firewise landscape practices](#) too.*

---

## Woodward columnar juniper

A native selection of Rocky Mountain juniper

[Woodward columnar juniper](#)  
(*Juniperus scopulorum*)

'Woodward') is a narrow Rocky Mountain juniper. It needs very little water and care once established.

We love the scale of this juniper. It only grows 2 to 4 feet wide, but it rises 18 to 20+ feet tall. This majestic tree can offer privacy, serve as a wind break or provide focal points (a dash of Tuscany!) without taking over every square foot of your yard.

Woodward turns gray-blue over winter (rather than bronze like eastern junipers), and it greens up in the spring. The tree has a branching structure that resists limb damage from snow compared to other upright junipers.

Zones 3–9. Full sun–part shade.



Learn more (including this tree's backstory)

**Availability:** Woodward columnar juniper has become more widely available in the last 18 months. The best time to shop for conifers like Woodward is often March and April.

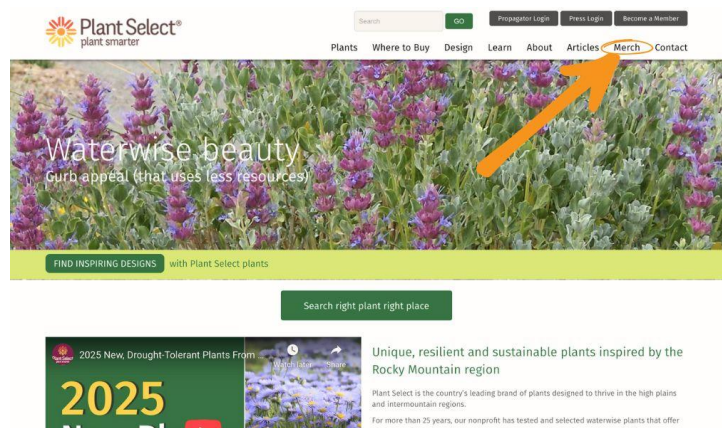
**Firewise note:** If you live in a wildland–urban interface, avoid planting junipers within at least 30 feet of your home. Consult your local firewise organization for guidelines.

## Show your support for low-water plants (and look darn good doing it)

Just in time for the holidays, **Plant Select merch** is now available on our website.

Choose from shirts, hats, hoodies and more. Ship the gear directly to yourself or to one of your fave gardeners.

Thanks for helping us spread the word about resilient, waterwise plants!







*Sophia Schepman, Bev Shaw and Ross Shrigley show off some of their fave Plant Select gear.*

## 2026 New Plants

### Plant Select's new plants are coming soon

Look for our 2026 plants in our January e-newsletter!

And for those who've asked how you can support our nonprofit this holiday season, [consider becoming a Plant Select member](#). Your membership supports plant research and trials. Be part of the movement to make western landscapes more beautiful, resilient and sustainable!

Thank you and enjoy your holidays!

### Smart plants for the right places

A low-water trio that shine together, even in late fall



Mock bearberry  
manzanita



Dalmation pink  
cranesbill



EVERSILVER™  
creeping  
germander

Botanical names:

*Arctostaphylos x coloradensis* | *Geranium dalmaticum* | *Teucrium* 'Harlequin's Silver'

## Quick links

Fall season  
extenders

Native plants

Hummingbird  
plants

Share this e-newsletter:



Share This Email



Share This Email



Share This Email

% Colorado State University  
1173 Campus Delivery  
Fort Collins, CO 80523-1173  
PH: (970)-481-3429

DENVER BOTANIC  
GARDENS

Colorado  
State  
University



Plant Select | c/o Colorado State University 1173 Campus Delivery | Fort Collins, CO 80523-1173 US

[Unsubscribe](#) | [Update Profile](#) | [Constant Contact Data Notice](#)