



Plant Select®  
Smart plants for the right places

CLICK TO SEARCH RIGHT PLANT RIGHT  
PLACE!

*If you're new to our e-newsletter, cheers! For more than 25 years, our non-profit has tested and selected waterwise plants that thrive in the high plains and intermountain regions, so you can create smart, stunning and low maintenance landscapes with a positive environmental impact—no matter what your skill level.*

**Plant Select's goal is to create smart plant choices for a new American landscape inspired by the Rocky Mountain region**

**A warm welcome to our newest Plant Select members:**

- Barry Smith – Individual Ambassador
- Christie Tew Kline – Individual Ambassador
- Glenn McCaslin – Individual Ambassador
- Judith Estes – Individual Ambassador
- Karolyn Bliss – Individual Ambassador
- Kevin Ewerks – Individual Ambassador
- Marie Jeanne Lombardi – Individual Ambassador
- Tracy Harrison – Individual Ambassador

**And thanks to all who've renewed their memberships!**

[Learn how to become a Plant Select member: Landscape Professional, Retail, Wholesale, Mail Order, Local Government or Individual Ambassador](#)

**Get first dibs on Plant Select's 2023 plants**  
Our Garden Wiser event is coming up on May 27

**[More garden centers added!](#)**

**Date:** Saturday, May 27

**Time:** 9 am–noon



Garden Wiser With Plant Select

**Location:** Participating garden centers in Wyoming and Colorado (including in Cortez and Durango)

Chat with master gardeners about waterwise gardening and be among the first to find Plant Select's new [waterwise perennials and shrubs for 2023](#)

Find a participating garden center

## In the garden with Grace

### How (and why) to "bare root" your waterwise perennials

Watch as Horticulturist **Grace Johnson** of Denver Botanic Gardens Chatfield Farms demonstrates her favorite way of planting waterwise perennials (including native plants): **bare root planting!**

In this helpful video, Grace shares why she removes the potting soil from plants **before** planting and the simple steps she follows, so you can find inspiration for your own garden. (This technique also works well for crevice gardens.)



Watch this planting video

We're thrilled that Grace is speaking at the [2023 Plant Select Annual Conference](#)  
Scroll down for details!

## Get ready for a dynamic group of speakers at the 2023 Plant Select Annual Conference

Join us **Thursday, June 15 | 8:30 am–4 pm**  
Denver Botanic Gardens



**Untapped Native Species for the Rocky Mountains**  
Dr. Jennifer Ackerfield  
Denver Botanic Gardens



**Selling Sustainability**  
Cynthia Bee  
Jordan Valley (Utah) Water Conservancy District



**Creating Fire-Resilient Landscapes**  
Andrea Dorman  
Idaho Firewise



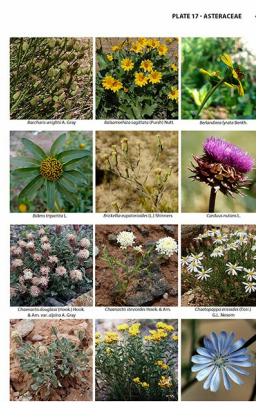
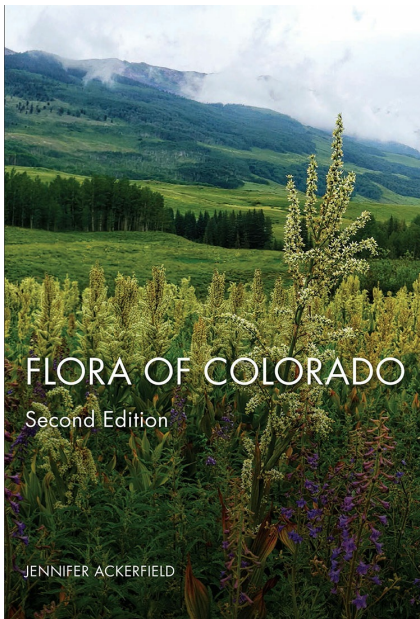
**Great Botanic Gardens +  
How to Make the Most of  
Visits to Botanic Gardens**  
Mike Kintgen  
Denver Botanic Gardens



**Exciting Plans for Plant  
Select's Demonstration  
Gardens at Chatfield  
Farms**  
Grace Johnson  
Denver Botanic Gardens  
Chatfield Farms



**Secret and Overlooked  
Plants and Places at  
Denver Botanic Gardens**  
Mike Bone  
Denver Botanic Gardens



**812 VOLUCCACEAE**

**106.** Heads white with purple veins. ***A. leucolobus***  
**107.** Heads white with purple veins. ***A. leucolobus***  
**108.** Heads light to dark violet with dark veins. ***A. leucolobus***  
**109.** Heads light to dark violet with dark veins. ***A. leucolobus***  
**110.** Heads light to dark violet with dark veins. ***A. leucolobus***  
**111.** Heads light to dark violet with dark veins. ***A. leucolobus***  
**112.** Heads light to dark violet with dark veins. ***A. leucolobus***  
**113.** Heads light to dark violet with dark veins. ***A. leucolobus***  
**114.** Heads light to dark violet with dark veins. ***A. leucolobus***  
**115.** Heads light to dark violet with dark veins. ***A. leucolobus***  
**116.** Heads light to dark violet with dark veins. ***A. leucolobus***  
**117.** Heads light to dark violet with dark veins. ***A. leucolobus***  
**118.** Heads light to dark violet with dark veins. ***A. leucolobus***  
**119.** Heads light to dark violet with dark veins. ***A. leucolobus***  
**120.** Heads light to dark violet with dark veins. ***A. leucolobus***  
**121.** Heads light to dark violet with dark veins. ***A. leucolobus***  
**122.** Heads light to dark violet with dark veins. ***A. leucolobus***  
**123.** Heads light to dark violet with dark veins. ***A. leucolobus***  
**124.** Heads light to dark violet with dark veins. ***A. leucolobus***  
**125.** Heads light to dark violet with dark veins. ***A. leucolobus***  
**126.** Heads light to dark violet with dark veins. ***A. leucolobus***  
**127.** Heads light to dark violet with dark veins. ***A. leucolobus***  
**128.** Heads light to dark violet with dark veins. ***A. leucolobus***  
**129.** Heads light to dark violet with dark veins. ***A. leucolobus***  
**130.** Heads light to dark violet with dark veins. ***A. leucolobus***  
**131.** Heads light to dark violet with dark veins. ***A. leucolobus***  
**132.** Heads light to dark violet with dark veins. ***A. leucolobus***  
**133.** Heads light to dark violet with dark veins. ***A. leucolobus***  
**134.** Heads light to dark violet with dark veins. ***A. leucolobus***  
**135.** Heads light to dark violet with dark veins. ***A. leucolobus***  
**136.** Heads light to dark violet with dark veins. ***A. leucolobus***  
**137.** Heads light to dark violet with dark veins. ***A. leucolobus***  
**138.** Heads light to dark violet with dark veins. ***A. leucolobus***  
**139.** Heads light to dark violet with dark veins. ***A. leucolobus***  
**140.** Heads light to dark violet with dark veins. ***A. leucolobus***  
**141.** Heads light to dark violet with dark veins. ***A. leucolobus***  
**142.** Heads light to dark violet with dark veins. ***A. leucolobus***  
**143.** Heads light to dark violet with dark veins. ***A. leucolobus***  
**144.** Heads light to dark violet with dark veins. ***A. leucolobus***  
**145.** Heads light to dark violet with dark veins. ***A. leucolobus***  
**146.** Heads light to dark violet with dark veins. ***A. leucolobus***  
**147.** Heads light to dark violet with dark veins. ***A. leucolobus***  
**148.** Heads light to dark violet with dark veins. ***A. leucolobus***  
**149.** Heads light to dark violet with dark veins. ***A. leucolobus***  
**150.** Heads light to dark violet with dark veins. ***A. leucolobus***  
**151.** Heads light to dark violet with dark veins. ***A. leucolobus***  
**152.** Heads light to dark violet with dark veins. ***A. leucolobus***  
**153.** Heads light to dark violet with dark veins. ***A. leucolobus***  
**154.** Heads light to dark violet with dark veins. ***A. leucolobus***  
**155.** Heads light to dark violet with dark veins. ***A. leucolobus***  
**156.** Heads light to dark violet with dark veins. ***A. leucolobus***  
**157.** Heads light to dark violet with dark veins. ***A. leucolobus***  
**158.** Heads light to dark violet with dark veins. ***A. leucolobus***  
**159.** Heads light to dark violet with dark veins. ***A. leucolobus***  
**160.** Heads light to dark violet with dark veins. ***A. leucolobus***  
**161.** Heads light to dark violet with dark veins. ***A. leucolobus***  
**162.** Heads light to dark violet with dark veins. ***A. leucolobus***  
**163.** Heads light to dark violet with dark veins. ***A. leucolobus***  
**164.** Heads light to dark violet with dark veins. ***A. leucolobus***  
**165.** Heads light to dark violet with dark veins. ***A. leucolobus***  
**166.** Heads light to dark violet with dark veins. ***A. leucolobus***  
**167.** Heads light to dark violet with dark veins. ***A. leucolobus***  
**168.** Heads light to dark violet with dark veins. ***A. leucolobus***  
**169.** Heads light to dark violet with dark veins. ***A. leucolobus***  
**170.** Heads light to dark violet with dark veins. ***A. leucolobus***  
**171.** Heads light to dark violet with dark veins. ***A. leucolobus***  
**172.** Heads light to dark violet with dark veins. ***A. leucolobus***  
**173.** Heads light to dark violet with dark veins. ***A. leucolobus***  
**174.** Heads light to dark violet with dark veins. ***A. leucolobus***  
**175.** Heads light to dark violet with dark veins. ***A. leucolobus***  
**176.** Heads light to dark violet with dark veins. ***A. leucolobus***  
**177.** Heads light to dark violet with dark veins. ***A. leucolobus***  
**178.** Heads light to dark violet with dark veins. ***A. leucolobus***  
**179.** Heads light to dark violet with dark veins. ***A. leucolobus***  
**180.** Heads light to dark violet with dark veins. ***A. leucolobus***  
**181.** Heads light to dark violet with dark veins. ***A. leucolobus***  
**182.** Heads light to dark violet with dark veins. ***A. leucolobus***  
**183.** Heads light to dark violet with dark veins. ***A. leucolobus***  
**184.** Heads light to dark violet with dark veins. ***A. leucolobus***  
**185.** Heads light to dark violet with dark veins. ***A. leucolobus***  
**186.** Heads light to dark violet with dark veins. ***A. leucolobus***  
**187.** Heads light to dark violet with dark veins. ***A. leucolobus***  
**188.** Heads light to dark violet with dark veins. ***A. leucolobus***  
**189.** Heads light to dark violet with dark veins. ***A. leucolobus***  
**190.** Heads light to dark violet with dark veins. ***A. leucolobus***  
**191.** Heads light to dark violet with dark veins. ***A. leucolobus***  
**192.** Heads light to dark violet with dark veins. ***A. leucolobus***  
**193.** Heads light to dark violet with dark veins. ***A. leucolobus***  
**194.** Heads light to dark violet with dark veins. ***A. leucolobus***  
**195.** Heads light to dark violet with dark veins. ***A. leucolobus***  
**196.** Heads light to dark violet with dark veins. ***A. leucolobus***  
**197.** Heads light to dark violet with dark veins. ***A. leucolobus***  
**198.** Heads light to dark violet with dark veins. ***A. leucolobus***  
**199.** Heads light to dark violet with dark veins. ***A. leucolobus***  
**200.** Heads light to dark violet with dark veins. ***A. leucolobus***

Dr. Jennifer Ackerfield will be signing her book, *Flora of Colorado*, at the conference. Add to (or start) your plant book collection with a signed copy.

A big thanks to our sponsors:  
[Denver Botanic Gardens](#), [Northern Water](#), [Colorado State University](#)

**Ticket sales close Thursday, June 8 or upon sellout  
(There are less than 80 tickets left!)**

[Learn more about the conference >](#)

**Get your ticket here**

**Common xeriscaping myths**  
Have you heard these?

There are many misconceptions about what low-water landscapes should

look like. (Hello, yards filled with river rock!) In the latest issue of *Colorado Builder* magazine, we debunk three common xeriscaping myths.

[Read article >](#)

Our thanks to Deryn Davidson of Colorado State University Extension for her insights and to [The Green Fuse Landscape & Design](#) for sharing one of their beautiful xeriscapes.



## Late spring plant tips



Leadplant—including [Dwarf Leadplant](#)—can be slow to wake up in the spring. Don't be too quick to judge whether these native shrubs made it through winter. Give them some time.



To get the best display of flowers on your [Silver Fountain butterfly bush](#), hold off on pruning it until shortly after it blooms. It sets its flower buds on the previous year's growth.

## Smart plants for the right places Xeric native plants



Dwarf Leadplant



Gold on Blue Prairie Zinnia



Littleleaf Mountain Mahogany

Water these plants consistently to get them established.

Then, no supplemental irrigation is needed, except during prolonged drought.

% Colorado State University  
1173 Campus Delivery  
Fort Collins, CO 80523-1173  
PH: (970)-481-3429

DENVER BOTANIC  
GARDENS

Colorado  
State  
University

