

CLICK HERE TO SEARCH RIGHT PLANT RIGHT PLACE!

[Learn how to become a Plant Select Retail, Wholesale, Mail Order, or Landscape Professional Member!](#)

---

**Plant Select's goal is to create smart plant choices for a new American Landscape inspired by the Rocky Mountain Region**

---

**Join us at one of these upcoming events! We're excited to be speaking.**

**ProGreen Expo Denver: February 1-4, 2022**

Plant Select will be giving 3 talks:

**"Western Meadows Plants and Design:"** We need to think a little differently about "meadows" in the West, given our soils and weather. Join this panel discussion as we rethink suitable plant palettes and a new western aesthetic. These cutting-edge panelists have great ideas for installation and design!



**"New Plants and Updates From Plant Select:"** Every year Plant Select brings new ideas and plants through the Plant Select program. Stay up-to-date on the latest introductions and prospective plants that will make your landscapes successful.

**"From Bench to Backyard: Designing From the Garden Center:"** Through this engaging garden center panel, we'll explore different strategies for selling the plants on the shelves and giving customers good resources for decision making.

Get event details & register here (Early bird rates through Dec. 17)

## Idaho Horticulture Expo: January 19–22, 2022

Ross Shrigley, executive director of Plant Select, will speak on several topics, including an introduction to the Plant Select Program and:

**IDAHO**  
**HORTICULTURE**  
**EXPO**



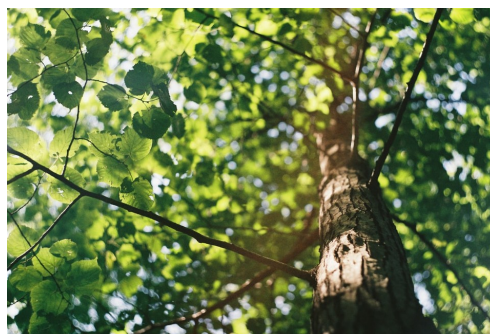
**"Smart and Stunning Native Landscapes:"** Think beyond purple coneflowers! Plant Select offers more than 80 types of North American native plants suited for western landscapes. Learn about resources and tools to create successful native landscapes.

[Find registration info here soon](#)

## Iowa State University Shade Tree Short Course: February 23–24, 2022

Ross Shrigley of Plant Select will give several talks, including an introduction to the Plant Select program and:

**"Rugged Plants for a Changing Climate:"** Changing climates require a new approach to tree and shrub selections. Collaborating with breeders, botanic gardens, universities, and independent plant explorers, Plant Select has developed exciting new plants suitable for the future, so growers, retailers and designers have ongoing success. Registration info coming soon!



*Photo Credit: David Vig on Unsplash*

### Shop popular Plant Select shirts for a limited time

Snag a gift for a gardener in your life or treat yourself! Our pop-up shop is live, and we're offering some of our most popular Plant Select clothing.

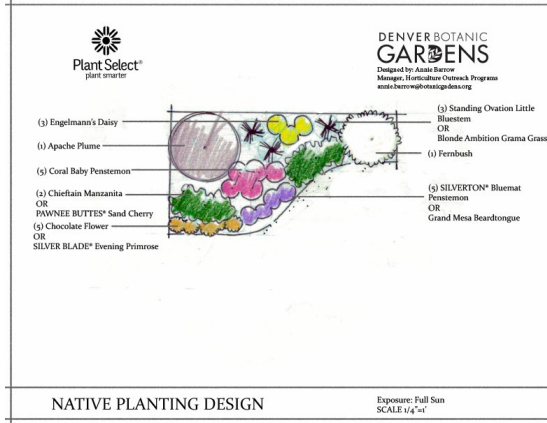
Orders will be shipped by early December to allow for delivery before the holidays.

Place your order soon... the shirts will only be available for purchase through **November 21, 2021**.

Please join us in supporting Plant Select!

[Find more shirts you love here](#)





*Native planting design by Annie Barrow*

## Thinking about redoing some of your landscape next year?

Winter is an excellent time to take "before" photos. Grab your camera or phone and take a few shots while you're thinking about it.

Did you know you can find a variety of free, downloadable design plans on the Plant Select website? Created by expert landscape designers, these garden plans have winter interest built in, as well as summer beauty.

Get inspired with Plant Select design plans

## Smart plants for the right places Excellent plants for WINTER INTEREST



UNDAUNTED®  
Ruby Muhly Grass



KANNAH CREEK®  
Buckwheat



Woodward  
Columnar Juniper

% Colorado State University  
1173 Campus Delivery  
Fort Collins, CO 80523-1173  
PH: (970)-481-3429

DENVER BOTANIC  
GARDENS

Colorado  
State  
University

