

Pneumatic Powered Magnets (External Drive)

Pneumatic Powered Magnetic Gripper MGM-HP

Dia: 20mm, 30mm, 40mm, 50mm



- ◆ Transporting porous metal plates and cutting pieces with complex geometric shapes
- ◆ Handling magnetic workpieces
- ◆ Pneumatic Powered

The Ordering Data of Pneumatic Powered Magnetic Grippers MGM-HP

MGM-HP 20 G1/8-IG PNP

① ② ③ ④

① model	② size	③ Specification of connector	④ Sensor
MGM-HP	20 - ϕ 20mm 30 - ϕ 30mm	40 - ϕ 40mm 50 - ϕ 50mm	Blank-Separate suction cup Blank-without sensor
		G1/8-IG - G1/8internal thread G1/4-IG - G1/4internal thread	PNP NPN

Note: IG=internal thread;

Model Specification of Pneumatic Powered Magnetic Grippers MGM-HP

Type	G1/8-IG	G1/4-IG
MGM-HP 20	●	-
MGM-HP 20 PNP	●	-
MGM-HP 20 NPN	●	-
MGM-HP 30	●	-
MGM-HP 30 PNP	●	-
MGM-HP 30 NPN	●	-
MGM-HP 40	-	●
MGM-HP 40 PNP	-	●
MGM-HP 40 NPN	-	●
MGM-HP 50	-	●
MGM-HP 50 PNP	-	●
MGM-HP 50 NPN	-	●

Pneumatic Powered Magnetic Grippers

Magnetic Gripper MGM-HP

Dia: 20mm, 30mm, 40mm, 50mm



Selection guide of sensor spare parts

Magnetic switch model	Switch output mode	Suitable for suction cups
D-Y59A	NPN	MGM-HP 20/30/40/50
D-Y7P	PNP	MGM-HP 20/30/40/50

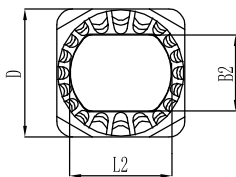


Magnetic Gripper Series MGM-HP

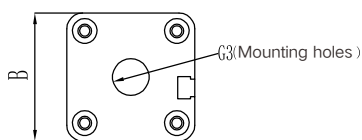
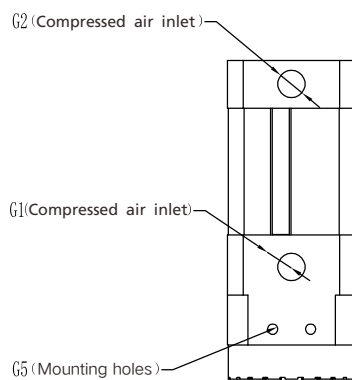
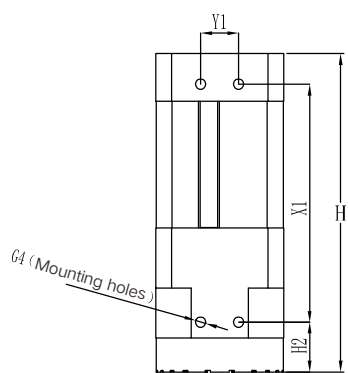
Type	Maximum Holding force [N]	Working Pressure Range [bar]	Installation Position	Control	Working Temperature [°C]	Weight [g]
MGM-HP 20 G1/8-IG	28	2.5...6	Arbitrary	Bistable	5...70	81
MGM-HP 30 G1/8-IG	120	2.5...6	Arbitrary	Bistable	5...70	215
MGM-HP 40 G1/4-IG	290	2.5...6	Arbitrary	Bistable	5...70	415
MGM-HP 50 G1/4-IG	560	2.5...6	Arbitrary	Bistable	5...70	770

Design Parameters of Pneumatic Powered Magnets MGM-HP

MGM-HP 20 to 50



CAD Available On Request



Type	Size [mm]													
	B	B2	D	G1	G2	G3	G4	G5	H	H2	L2	X1	Y1	
MGM-HP 20 G1/8-IG	20	9.1	20	M5	M5	G1/8	M3	M3	78.2	12.7	12.0	55	6.5	
MGM-HP 30 G1/8-IG	30	15.0	30	G1/8	G1/8	G1/8	M4	M4	99.4	15.7	20.5	74	12.0	
MGM-HP 40 G1/4-IG	40	24.2	40	G1/8	G1/8	G1/4	M4	M4	99.4	15.7	32.0	74	12.0	
MGM-HP 50 G1/4-IG	50	31.2	50	G1/8	G1/8	G1/4	M5	M4	123.4	15.7	41.5	100	15.0	