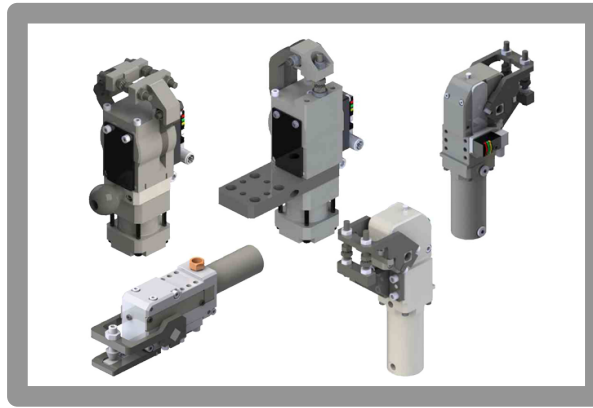


SPOT LIGHT

MARTECH
SALES & ASSOCIATES INC.

VEP
AUTOMATION



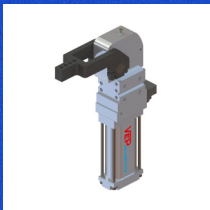
Automotive BIW Grippers - Work Holding & Press Feeding Automation

Main characteristics:

- Steel body
- High quality & cost effective
- Irreversibility of clamping position
- Steel arms type A - B
- Many mounting options
- Pneumatic cylinder bore 20mm, 32mm, 40mm
- 2 feeding ports G1/8"
- Inductive proximity switch 3 leds (connection M12x1)
- Sheet metal thickness compensation
- High clamping torque & holding moments
- Opening angles from 22,5° to 160°
- Working pressure : 4 - 8 bar

VEP AUTOMATION PRODUCT RANGE

(CLICK ON IMAGES BELOW TO VISIT URL LOCATION)



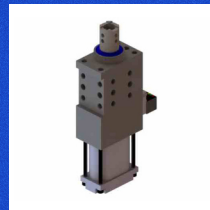
CLAMPING



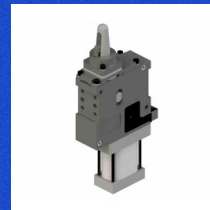
GRIPPING



LIFT/PIVOT



LOCATING



CENTER & HOOK



LINEAR SLIDES

MARTECH
SALES & ASSOCIATES INC.

1111 Davis Dr., Unit 1 Newmarket, Ontario Canada L3Y 9E5

Tel: 905 716-5856

Email: info@martechsales.com

URL: www.martechsales.com

VEP
AUTOMATION

Via San Felice, 37 10092 Beinasco – Torino (Italy)

Tel: +39 011 3972572

Email: info@vepautomation.com

URL: www.vepautomation.com