

Martech Sales & Associates Inc.

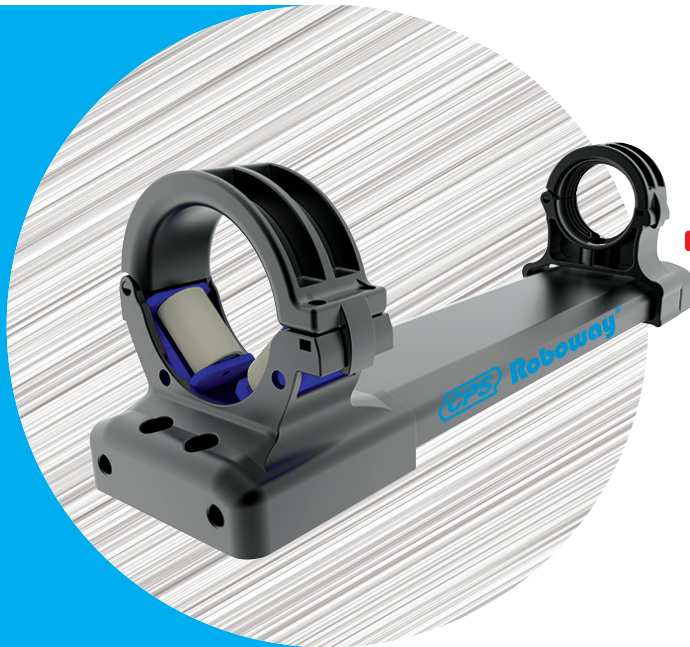
1111 Davis Dr., Unit 1

Newmarket, Ontario Canada L3Y 9E5

Tel: 905 716-5856

Email: info@martechsales.com

www.martechsales.com



NEW
Roboway®

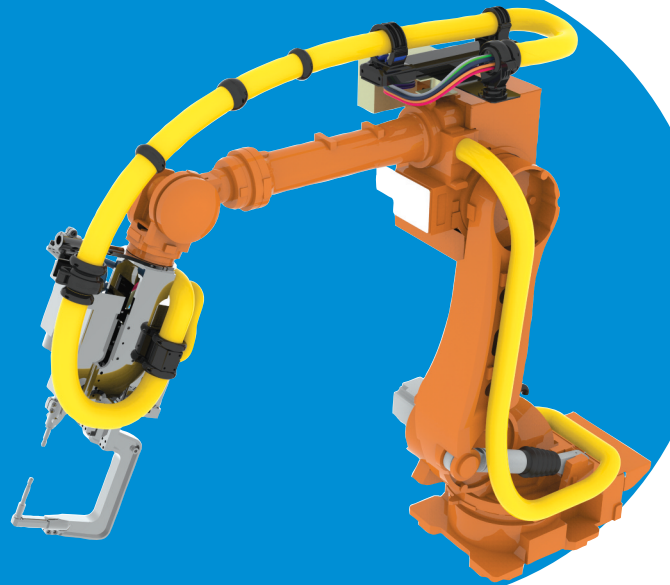
Robot Dress Pack Cable Tensioner System



PROTECTION SYSTEM
FOR ROBOT
TUBE/CABLES!

5 Sizes Available !
36, 48, 56, 70, 95

Can outfit most brands & manufactures of robots !
ABB, Fanuc, Yaskawa, Hyundai, Kuka, Universal,
Techman & Many More!



ROBO-KIT®

Component Systems & Mounting Hardware



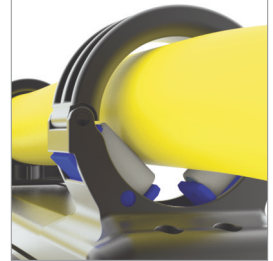
NEW
Roboway®
 RW Characteristic

Roboway® can protect cables effectively by making tube's movement to one direction while robot arm operates to various angle of direction.

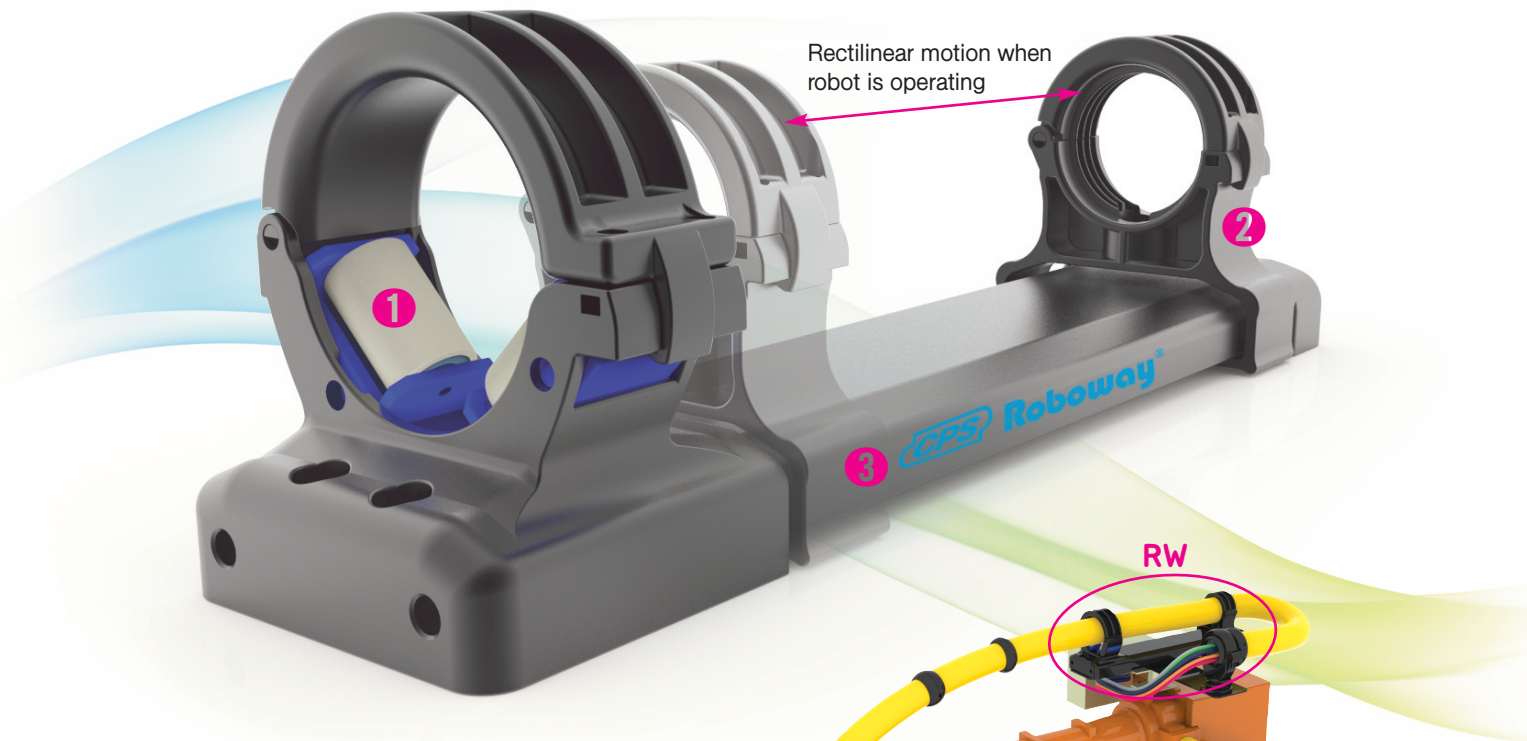
1 Minimized dust by attaching rollers!



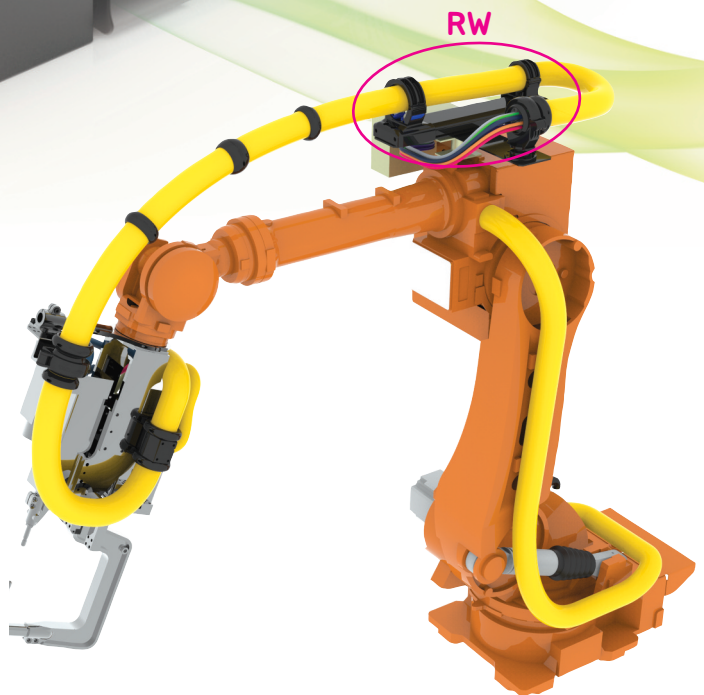
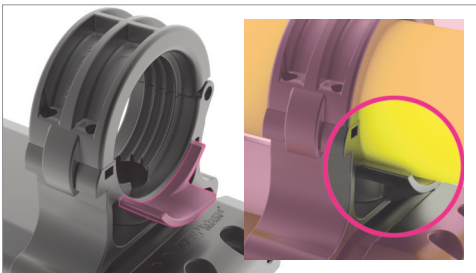
Before roller applied



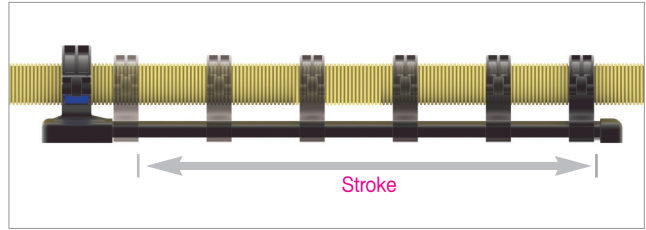
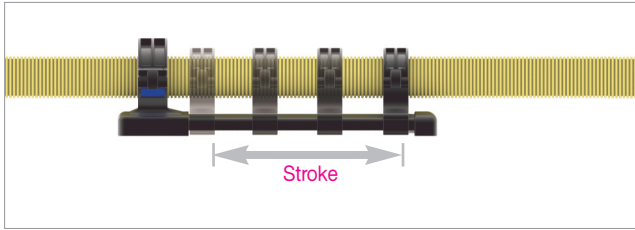
After roller applied



2 Design the guide unit to prevent tube's sagging problem.

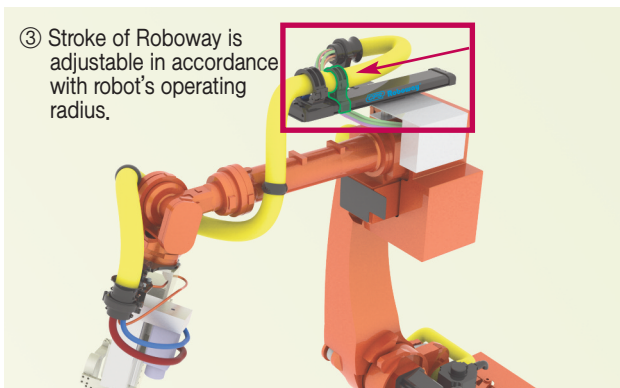
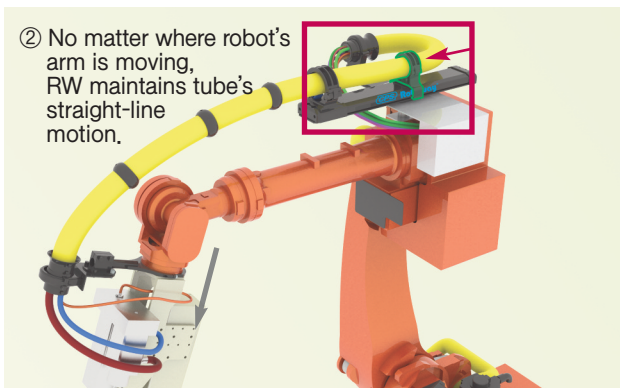
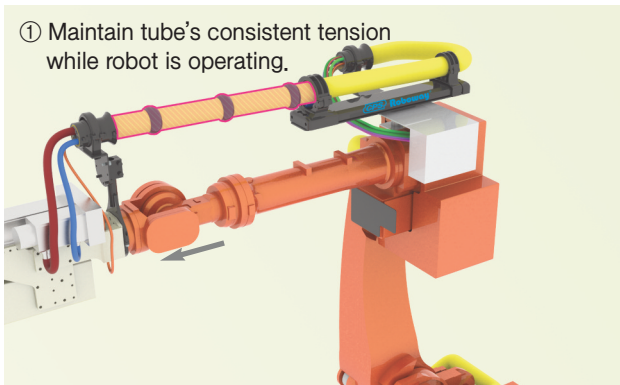


3 Freely adjustable stroke by 1mm unit.

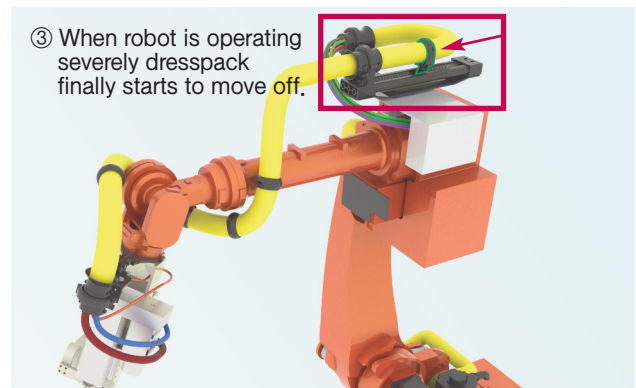
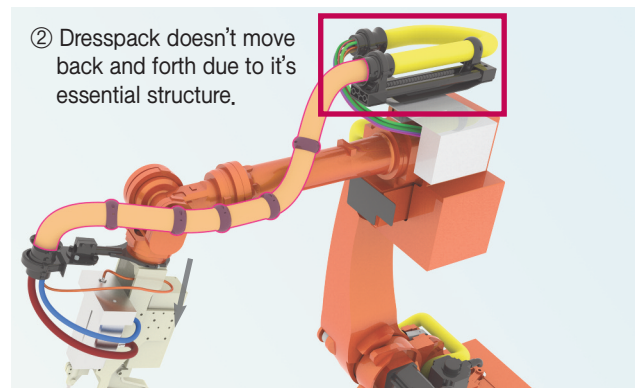
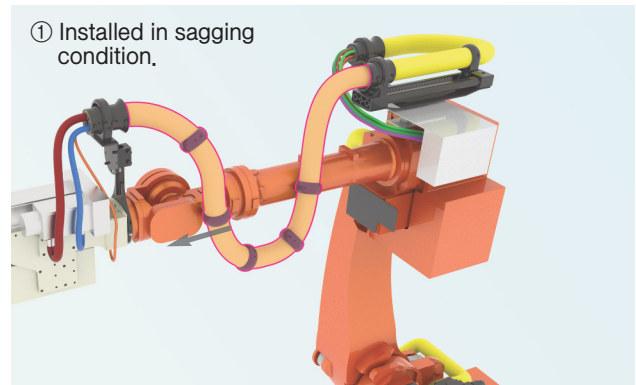


Comparison with other brand

CPS Roboway® in operation

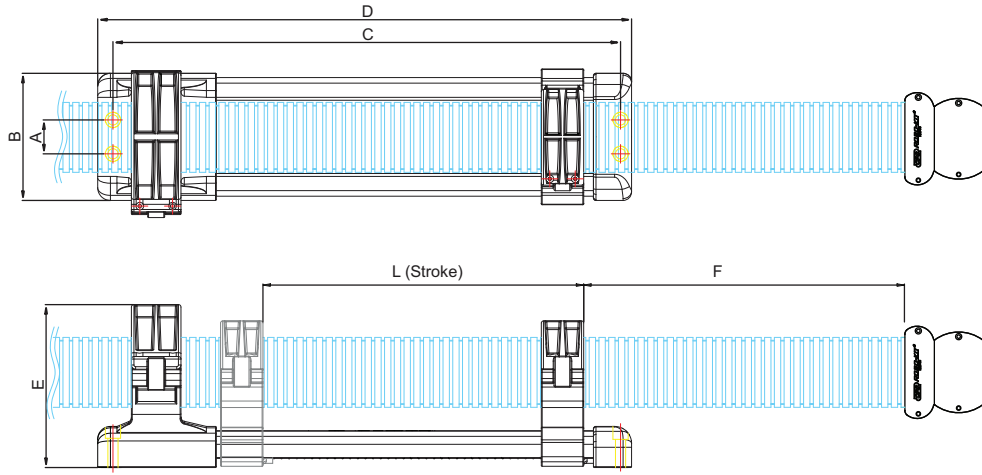


Other Products in operation



Weak points of other brands

- ① It needs many RKTP units as tube bumps against robot a lot,
- ② It causes damage to tube.

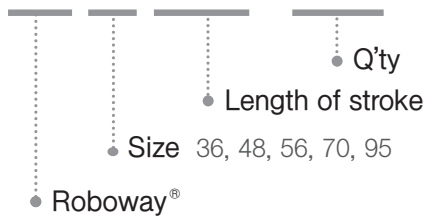


Specification

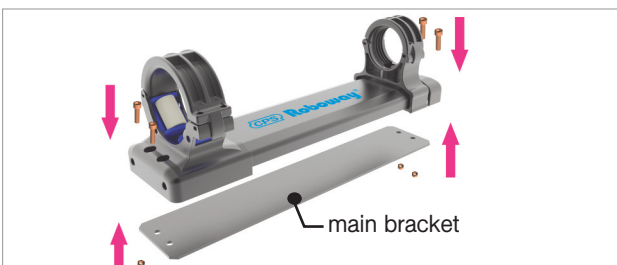
(Dimensions in mm)

Type	A Bolt hole width	B Width	C Bolt hole width	D Length	E Height	F Distance	L Stroke
RW-36	30	96	L+202	L+222	137	650~700	300 / 400 / 500 / 600
RW-48	30	96	L+202	L+222	137		
RW-56	40	150	L+249	L+280	192	700~750	350 / 450 / 550 / 650
RW-70	40	150	L+249	L+280	192		
RW-95	40	150	L+249	L+280	192		

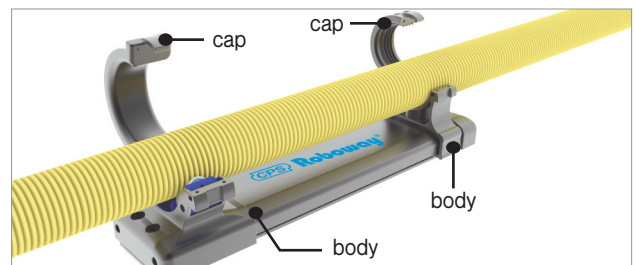
Ordering **RW-48 400L : 10ST**



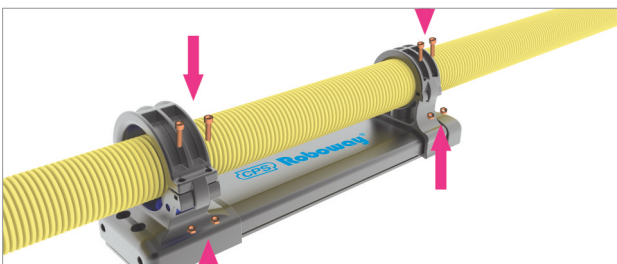
Assembly



- 1 Assemble RW to main bracket.
Bolt Specification
RW-48 : M6X35 / RW-70 : M10X45



- 2 Assemble tube to body after opening a cap of RW.



- 3 Bolt a cap to a body after closing a cap.
Bolt / Nut Specification
Roboway48 : M4X20, M4 Nylon nut
Roboway70 : M4X25, M4 Nylon nut



- 4 Assembly completion

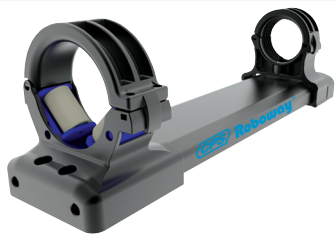
Roboway®

Basic Composition

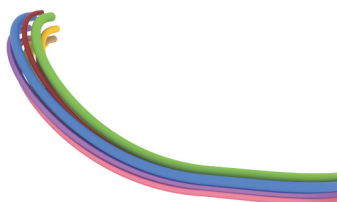
Size: 48/56/70/95



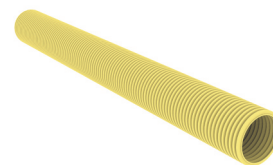
※ Roboway® Components can be composed in accordance with customer requirements.



RW (1set)



Cable, Hose (5~10M)



PAM (4~5M)



RKTP (4pcs)



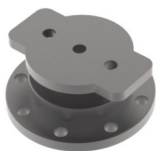
RKS (2pcs)



RKC (2pcs)



RKSC (2pcs)



RKR (1pcs)



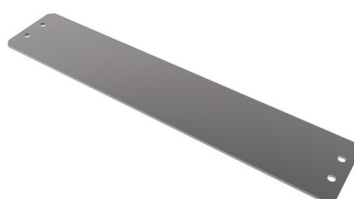
RKTC (1pcs)



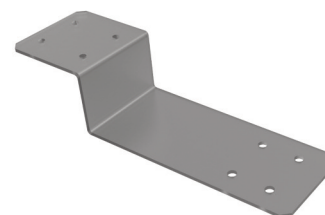
VCG (2pcs)



Column Support RCS (1EA)



Main Bracket RMB (1pcs)

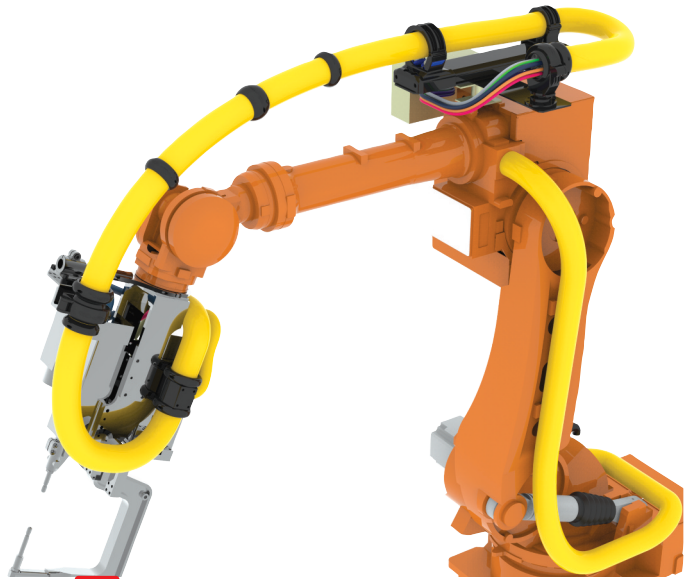


Sub Bracket RSB (1pcs)

Assembly Composition



RKR + RKC + RKS + VCG + RKTC + RKTP



ROBO-KIT® Components

ROBO-KIT 22 / 28 / 36 size



RKTP - Preventive unit of abrasion of tube

RKTP is made of strong wear-resistant material and it is installed where tube and part of Robot meets to protect tube. It lengthens life of tube and is convenient to assemble and disassemble.



RKS - Fixed unit installed at the end part of tube

It is installed at the end part of tube and is assembled with RKC. It is a ball joint structure which is used to variable movement of robot.



RKD - Fixed unit to support tube

It is installed to support tube's variable movement of Robot. It is a ball joint structure and operate well in condition of robot's variable movement.



RKC - Connection clamp of tube

It is installed with RKS and RKD and is fixed to specific area of robot with RCS and RKR. It is designed to bear robot's high speedy operation and great strength.



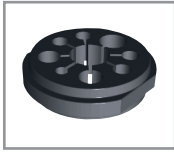
RKSC - Rotating unit to release fatigue degree

It protects friction between cable or hose and RKS while robot is operating. It is fixed with VCG in RKS.



RKR - Supporting unit

It is installed with RKC and it helps RKC rotates well in accordance with robot's movement.



VCG - Fixed unit for cable and hose

It is installed at the end part of tube in RKS as combined with RKSC. It holds cable and hose to not move. There are several size of hole' dimension in accordance with specification of cable and tube to be used.

ROBO-KIT 48 / 56 / 70 / 95 size



RKTP - Preventive unit of abrasion of tube

RKTP is made of strong wear-resistant material and it is installed where tube and part of Robot meets to protect tube. It lengthens life of tube and is convenient to assemble and disassemble.



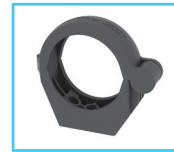
RKS - Fixed unit installed at the end part of tube

It is installed at the end part of tube and is assembled with RKC. It is a ball joint structure which is used to variable movement of robot.



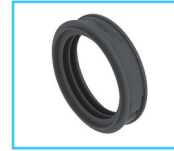
RKTC - Connection ring of tube

It is made of strong wear-resistant material and installed to where tube and body of robot meets. In case of tube damaged, it is used to connect tube in urgent. It also installed to guide tube with RKC. It is a ball joint type of unit which moves freely so appropriate to be used in robot's variable movement.



RKC - Connection clamp of tube

It is installed with RKS and RKD and is fixed to specific area of robot with RCS and RKR. It is designed to bear robot's high speedy operation and great strength.



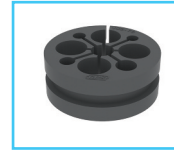
RKSC - Rotating unit to release fatigue degree

It protects friction between cable or hose and RKS while robot is operating. It is fixed with VCG in RKS.



RKR - Supporting unit

It is installed with RKC and it helps RKC rotates well in accordance with robot's movement.



VCG - Fixed unit for cable and hose

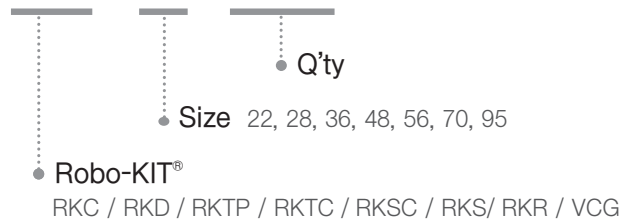
It is installed at the end part of tube in RKS. It holds cable and hose to not move. There are several size of hole' dimension in accordance with specification of cable and tube to be used.

ROBO-KIT® Dimension

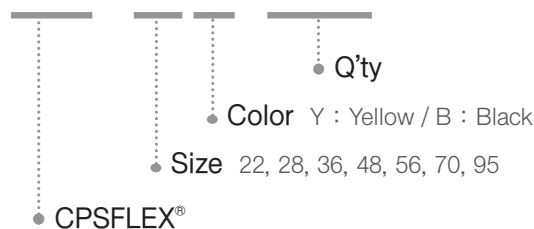
(Dimensions in mm)

Product	Conduit Size	Width	Height	Length	Outer Diameter
RKTP	22	28.0	46.4	-	46.4
	28	30.0	53.0		53.0
	36	30.0	62.0		62.0
	48	30.0	80.0		80.0
	56	40.0	93.2		93.2
	70	40.0	108.0		108.0
	95	45.0	131.5		131.5
RKTC	48	50.0	78.0	-	78.0
	56	60.0	90.2		90.2
	70	60.0	105.0		105.0
	95	65.0	128.5		128.5
RKC	22	30.0	50.0	49.0	45.0
	28	30.0	59.5	58.8	53.5
	36	45.0	88.3	90.2	76.0
	48	49.5	105.0	128.2	98.0
	56	40.0	138.1	150.1	116.2
	70	40.0	145.5	164.9	131.0
	95	50.0	169.3	190.9	154.5
RKS	22	50.0	23.0	23.0	23.0
	28	60.0	27.0	27.0	27.0
	36	100.3	80.5	80.5	80.5
	48	89.0	92.3	92.3	92.3
	56	102.0	105.3	105.3	105.3
	70	102.0	120.1	120.1	120.1
	95	120.0	144.2	144.2	144.2
RKD	22	50.0	23.0	23.0	23.0
	28	60.0	27.0	27.0	27.0
	36	120.0	83.0	83.0	83.0
RKSC	22	10.5	29.5	-	29.5
	28	13.0	34.5		34.5
	36	20.6	44.6		44.6
	48	22.0	67.5		67.5
	56	26.0	81.2		81.2
	70	26.0	96.0		96.0
	95	35.0	119.5		119.5
RKR	22	56.0	25.7	-	56.0
	28	56.0	25.7		56.0
	36	98.0	42.0		98.0
	48	98.0	42.0		98.0
	56	98.0	42.0		98.0
	70	98.0	42.0		98.0
	95	120.0	37.0		120.0
VCG	22	10.5	25.5	-	25.5
	28	13.0	30.5		30.5
	36	20.6	40.6		40.6
	48	24.0	62.5		62.5
	56	34.0	75.8		75.8
	70	34.0	90.0		90.0
	95	43.0	113.5		113.5

ROBO-KIT® Ordering RKC - 70 : 10EA

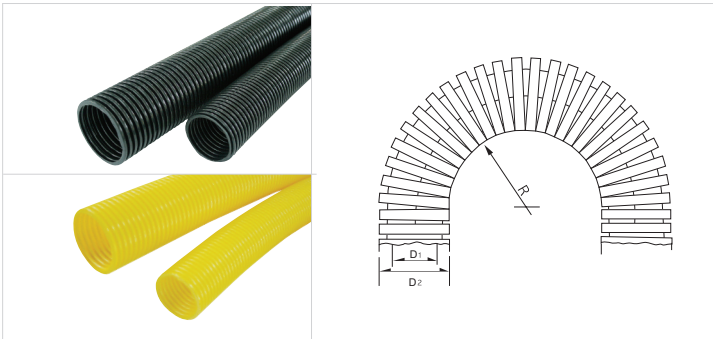


CPSFLEX® Ordering PAM - 70 B : 100M

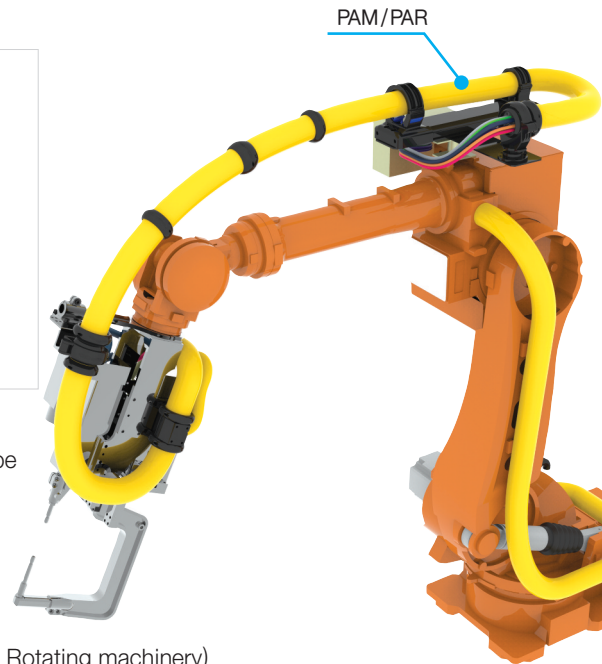


PAM is specially corrugated tube made of high quality polyamide 11/12.

CPSFLEX® – PAM Specification



- Material : High Quality Polyamide 11/12 (PAM)
: High Quality Polyamide 12 (PAR)
- Construction : Inside & Outside Corrugated Plastic tube
- Degrees of Protection : IP 68
- The max. Instantaneous Temperature : -50°C to +95°C
- Short Term : up to +150°C
- Self-Extinguishing : UL94-V2, Halogen-Free
- Color : Black & Yellow
- Connections : Roboway, Robo-kit, CPSFIX
- Application : Robots (Welding robot, Handling robot, Rotating machinery)



Black	Yellow	Inner Diameter (D1)	Outer Diameter (D2)	Bending Radius (R)mm ±10%	Packing meter / roll
PAM / PAR - 22B	PAM / PAR - 22Y	21.7	28.5	45	50
PAM / PAR - 28B	PAM / PAR - 28Y	27.8	34.5	55	50
PAM / PAR - 36B	PAM / PAR - 36Y	36.0	42.5	60	30
PAM / PAR - 48B	PAM / PAR - 48Y	46.5	54.5	70	30
PAM / PAR - 56B	PAM / PAR - 56Y	56.3	67.2	110	30
PAM / PAR - 70B	PAM / PAR - 70Y	70.0	82.5	160	10
PAM / PAR - 95B	PAM / PAR - 95Y	91.5	106.0	210.0	10

(Dimensions in mm)

NORFLEX® PUR Tube



- Material : Special premium polyurethane(Pre-PUR®)
- Properties : Fabric reinforced / highly abrasion-proof
highly flexible / crush resistant
good resistance to oil, gasoline and chemicals
comply with RoHs guideline
- Color : Transparent, blue, gray, black, red, green, yellow
(TR, BL, GR, BK, RE, GN, YE)
- Application : Industrial robot, automatic welding facility, excellent resistance at high temperature welding flame.
Injection molding, high pressure air or cooling water hose.
Flexible & high anti-abrasion.

Inner Diameter (in/mm)	Outer Diameter (mm)	min. Burst Pressure (bar)	Bending Radius (mm)	Weight (kg/m)	Packing meter / roll
• 3/8" (9.4)	16.0	80	55.3	0.153	50
• 1/2" (12.8)	19.5	80	68.8	0.230	50

NORFLEX® Ordering

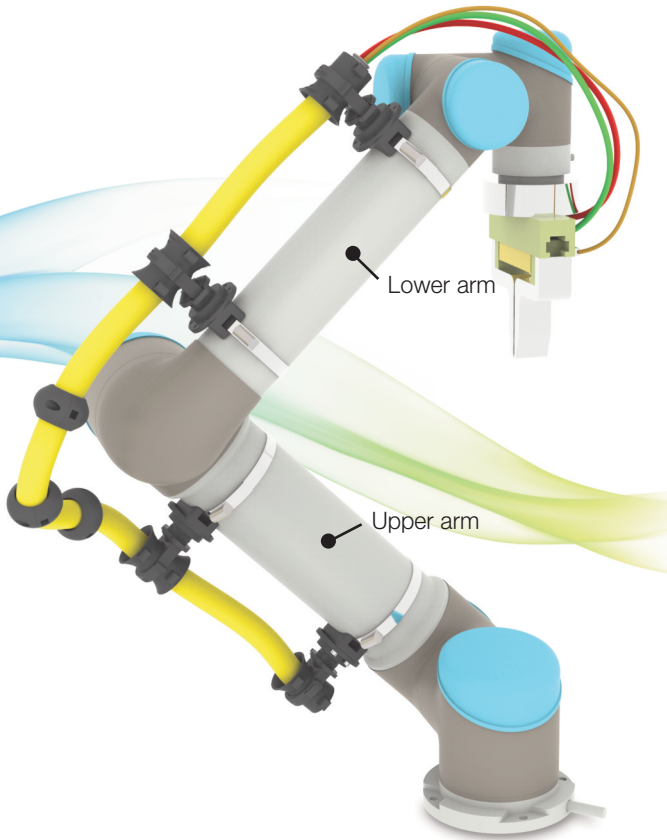
PUR - 9.4 BK : 100M

- NORFLEX®
- Size 9.4 / 12.8 (Inner dia.)
- Color (TR, BL, GR, BK, RE, GN, YE)
- Q'ty (Length)

UR BAND

Cable guidance for UNIVERSAL ROBOT

ROBO-KIT 22/28 is specially applied to compact robot to protect cables and hoses.



Bracket + Steel band

ROBO-KIT + Steel band



Velcro A Type
Ø52~Ø66

Velcro B Type
Ø66~Ø90

Velcro C Type
Ø108~Ø145



Steel band dimension for UNIVERSAL ROBOT

Type	Inner Diameter	Applicable products
UR3.BAND	Lower arm Ø54	ROBO-KIT 22/28
	Upper arm Ø66	
UR5.BAND	Lower arm Ø75	
	Upper arm Ø85	
UR10.BAND	Lower arm Ø86	
	Upper arm Ø108	

Velcro Type dimension for UNIVERSAL ROBOT

Type	Inner Diameter	VelcroType	Applicable products
UR3.BAND	Lower arm Ø52~Ø66	A	ROBO-KIT 22/28
	Upper arm		
UR5.BAND	Lower arm Ø66~Ø90	B	
	Upper arm		
UR10.BAND	Lower arm Ø66~Ø90	B	
	Upper arm Ø108~Ø145	C	

Steel band ordering (ROBO-KIT is ordered separately)

UR5.BAND 085 : 2EA

- Q'ty
- Inner Diameter of Robot's arm Order after checking the upper and lower robot arm's diameter
- Steel band for UNIVERSAL ROBOT UR3 / UR5 / UR10

Roboway®

Application

