

FMC1128 Travel Motor Mount

DETAIL A

DETAIL D

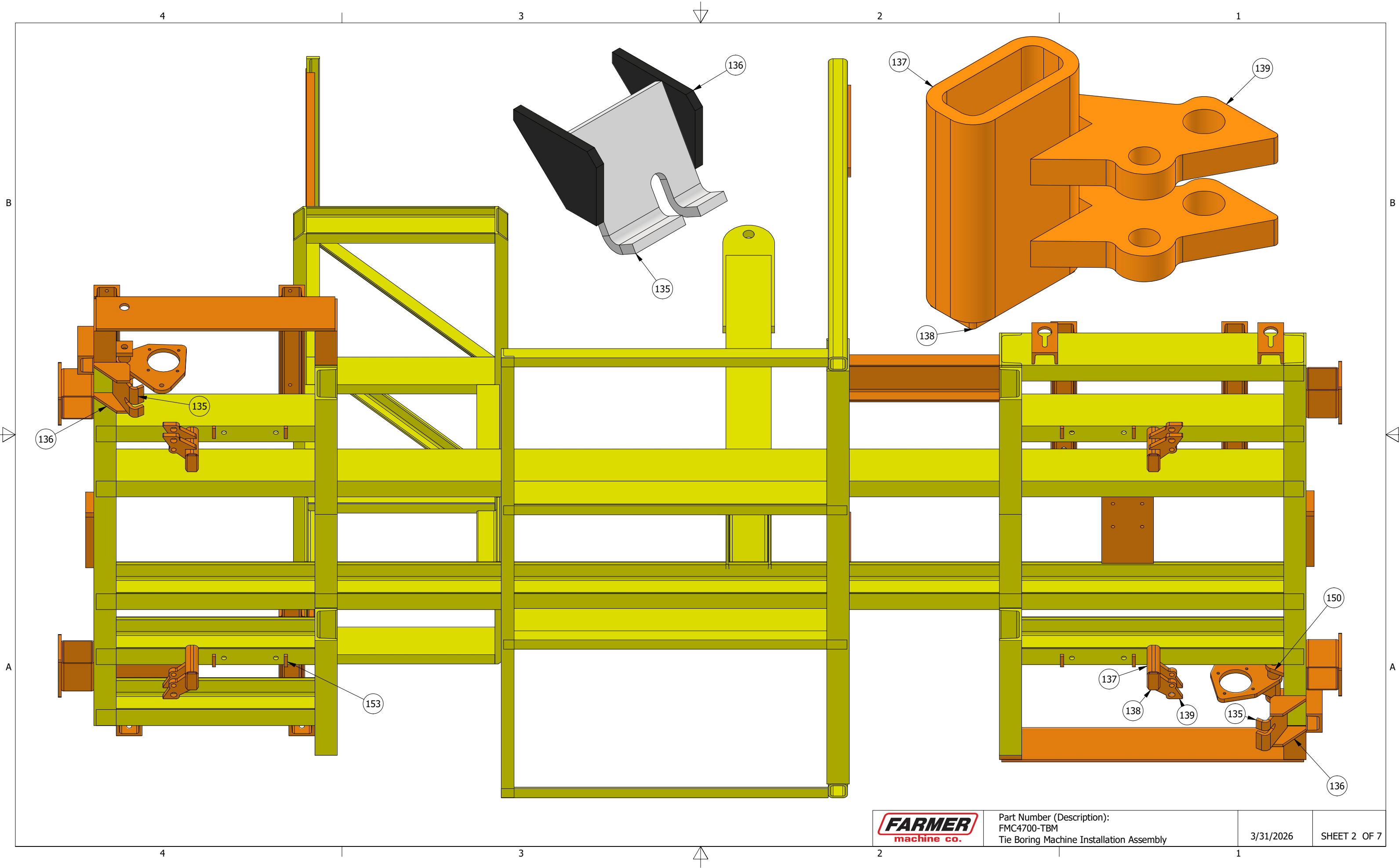
DETAIL B



Part Number (Description):
 FMC4700-TBM
 Tie Boring Machine Installation Assembly

3/31/2026

SHEET 1 OF 7



Part Number (Description):
 FMC4700-TBM
 Tie Boring Machine Installation Assembly

3/31/2026

SHEET 2 OF 7

4

3

2

1

PARTS LIST

PART NUMBER	ITEM QTY	DESCRIPTION	BASE QTY	STOCK NUMBER	THICKNESS	REVISION NUMBER
FMC1128	2	FMC1128 Travel Motor Mount	1			
FMC4700-TBM-111	4	MC 7 x 19.1 - 7.25	7.438 in	MC 7 x 19.1		
FMC4700-TBM-112	1	Frame Plate	1		0.500 in	
FMC4700-TBM-113	1	Frame Plate	1		0.500 in	
FMC4700-TBM-117	1	Window Panel Upgrade	1		0.125 in	
FMC4700-TBM-124	1	Window Frame 1 x 1 x .125 - 28.875	28.875 in	1 x 1 x .125		
FMC4700-TBM-130	1	Front Window	1		0.125 in	
FMC4700-TBM-133	1	L 1.25 x 1.25 x .1875 - 29.5	29.500 in	L 1 1/4 x 1 1/4 x 3/16		
FMC4700-TBM-134	1	L 1.25 x 1.25 x .1875 - 29.5	29.500 in	L 1 1/4 x 1 1/4 x 3/16		
FMC4700-TBM-135	2	Travel Motor Bolt Angle Plate	1		0.500 in	023-067-075
FMC4700-TBM-136	4	Travel Motor Mount Gusset	1		0.500 in	
FMC4700-TBM-137	4	4 x 2 x .375 - 5.75	5.750 in	4 x 2 x 3/8		
FMC4700-TBM-138	4	Brake Mount Tube Cap	1		0.250 in	Brake Mount Tube Cap
FMC4700-TBM-139	8	Nordco Style Brake Bracket	1		0.750 in	FMC 3277 Nordco Style Brake Bracket
FMC4700-TBM-146	2	Travel Motor Pivot Tab	1		0.750 in	
FMC4700-TBM-147	2	Tow Bracket Tap Plate	1		1.250 in	023-067-005
FMC4700-TBM-148	4	5 x 5 x .1875 - 6	6.000 in	5 x 5 x 3/16		
FMC4700-TBM-149	6	Tie Down Bracket	6.500 in	MC 4 x 13.8		FMC3208 Tie down bracket
FMC4700-TBM-150	2	Travel Motor Pivot Tab	1		0.750 in	
FMC4700-TBM-151	1	Engine Mount Front MC 4 x 13.8 - 29	29.000 in	MC 4 x 13.8		
FMC4700-TBM-152	1	Engine Mount Rear MC 4 x 13.8 - 29	29.000 in	MC 4 x 13.8		
FMC4700-TBM-153	8	Front Axle Key Stock	1	1/2 x 1/2	0.500 in	023-067-030 Front Axle Key Stock - REV1
FMC4700-TBM-154	4	Bumper Mount Plate	1		0.500 in	
FMC4700-TBM-163	3	Light Mounting Plate	1		0.500 in	2368-100-100-075
FMC4700-TBM-164	1	MC 4 x 13.8 - 24	24.000 in	MC 4 x 13.8		
FMC4700-TBM-165	1	MC 4 x 13.8 - 24	24.000 in	MC 4 x 13.8		
FMC4700-TBM-166	1	Unistrut	1	1.625 x 1 x .875		
FMC4700-TBM-167	1	MC 4 x 13.8 - 15	15.000 in	MC 4 x 13.8		
FMC4700-TBM-168	1	MC 4 x 13.8 - 15	15.000 in	MC 4 x 13.8		
FMC4700-TBM-169	1	MC 3 x 7.1 - 16.75	16.750 in	MC 4 x 13.8		
FMC4700-TBM-170	4	Tap Plate	1		0.500 in	
FMC3257	1	Fire Extinguisher Box Mount Plate	1		0.250 in	NEW
FMC4700-TBM-171	1	Plate	1		0.500 in	
FMC4700-TBM-172	1	Plate	1		0.500 in	
FMC4700-TBM-173	2	Radiator Mount	1			021-223-001
FMC4700-TBM-174	2	L 1.25 x 1.25 x .1875 - 13	13.000 in	L 1 1/4 x 1 1/4 x 3/16		
FMC4700-TBM-175	1	C 8 x 11.5 - 24	24.000 in	C 8 x 11.5		
FMC4700-TBM-176	1	High Pressure Filter Plate	1		0.500 in	
FMC4700-TBM-177	1	Tap Plate	1		0.500 in	



Part Number (Description):

3/31/2026

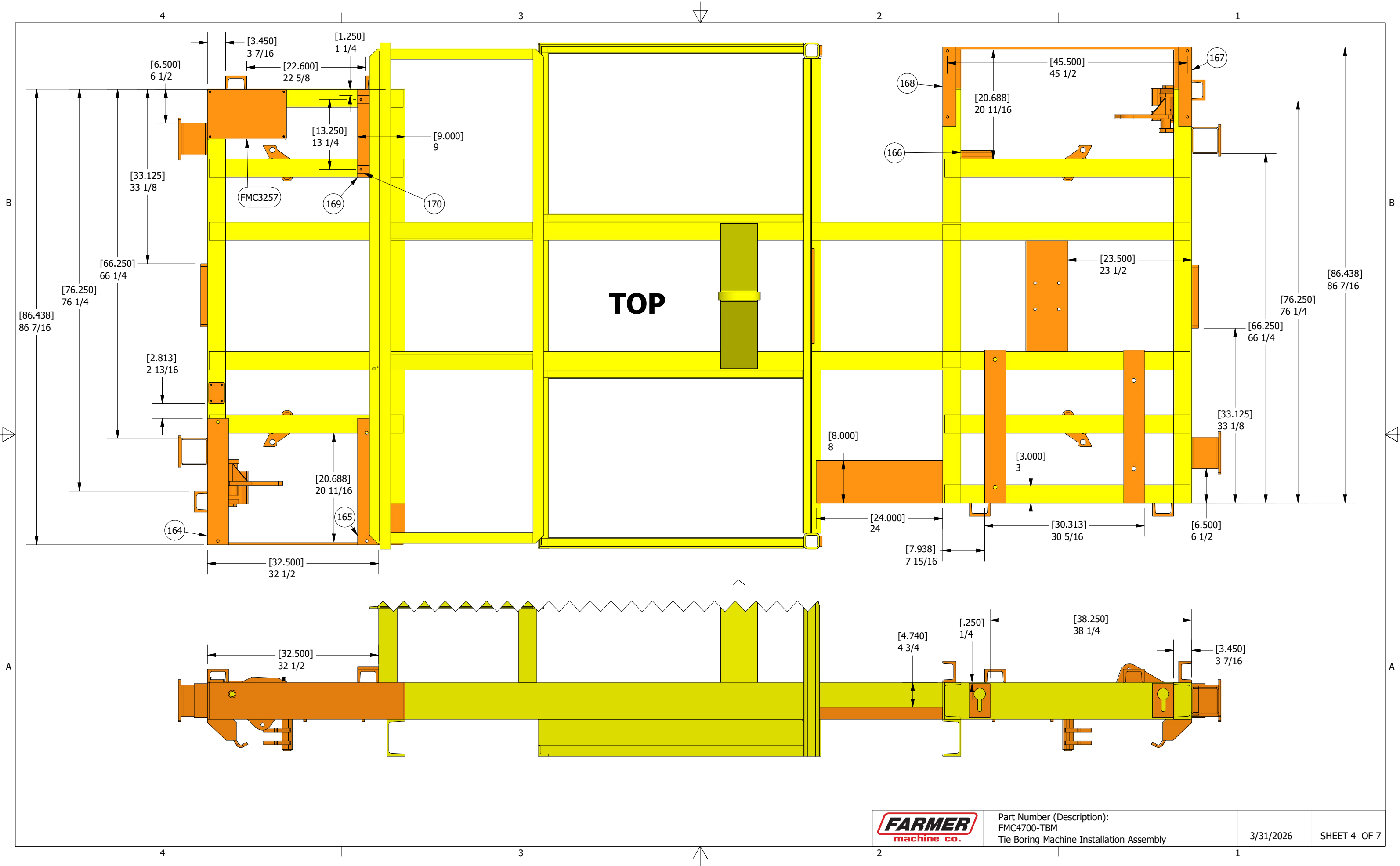
SHEET 3 OF 7

4

3

2

1



4

3

2

1

B

B

A

A

[3.450] 3 7/16
[22.600] 22 5/8
[1.250] 1 1/4
[6.500] 6 1/2
[33.125] 33 1/8

[13.250] 13 1/4
[9.000] 9

FMC3257

169

170

[66.250] 66 1/4

[76.250] 76 1/4

[86.438] 86 7/16

[2.813] 2 13/16

[20.688] 20 11/16

164

165

[32.500] 32 1/2

168

166

167

[45.500] 45 1/2
[20.688] 20 11/16

[23.500] 23 1/2

[76.250] 76 1/4

[66.250] 66 1/4

[33.125] 33 1/8

[8.000] 8

[3.000] 3

[24.000] 24

[30.313] 30 5/16

[6.500] 6 1/2

[7.938] 7 15/16

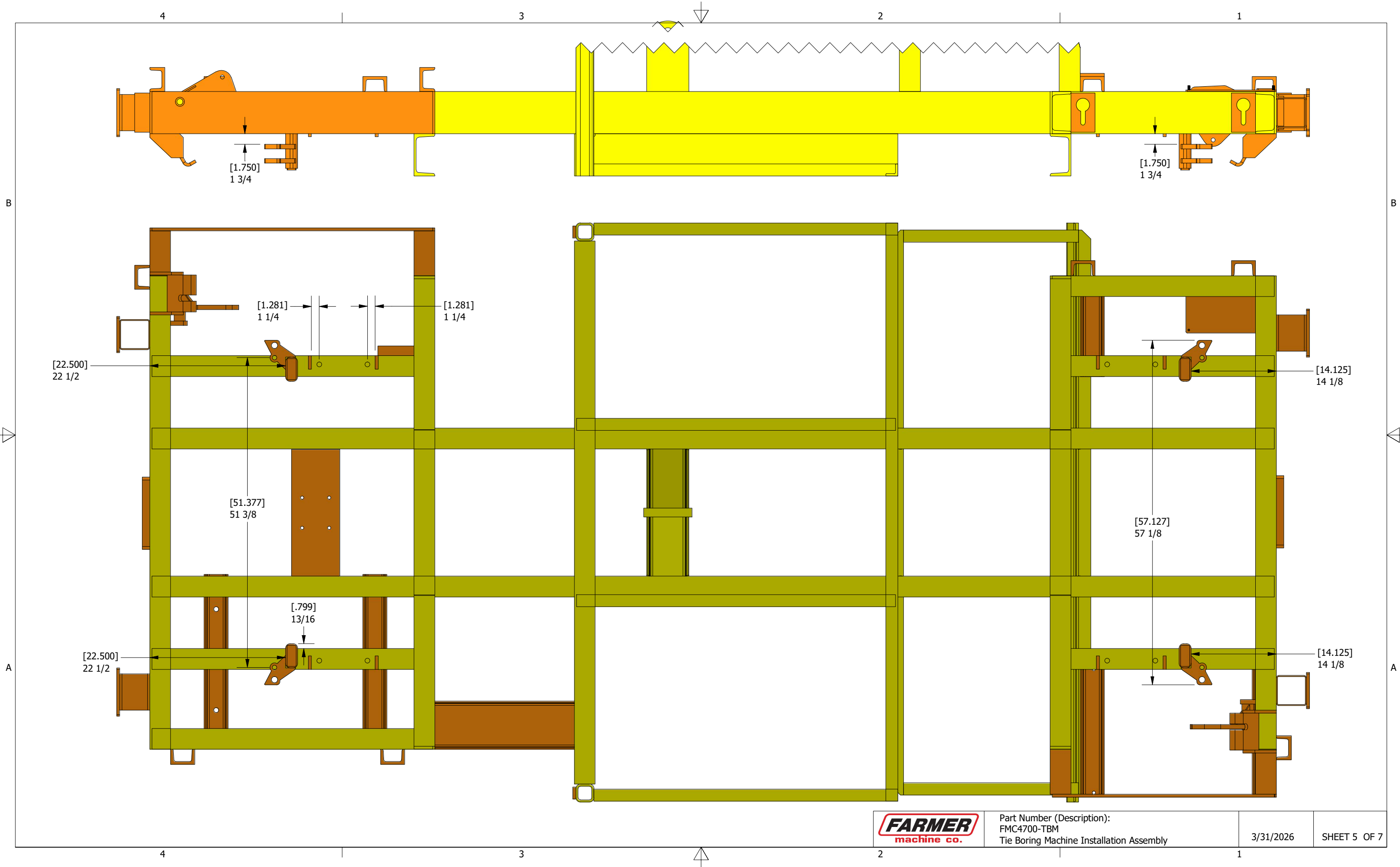
[32.500] 32 1/2

[4.740] 4 3/4

[.250] 1/4

[38.250] 38 1/4

[3.450] 3 7/16



Part Number (Description):
 FMC4700-TBM
 Tie Boring Machine Installation Assembly

3/31/2026

SHEET 5 OF 7

4

3

2

1

FMC4700-TBM-150 (Travel Motor Pivot Tab).ipt

FMC4700-TBM-136 (Travel Motor Mount Gusset).ipt

FMC4700-TBM-135 (Travel Motor Bolt Angle Plate).ipt

[6.000]
6

[5.000]
5

[6.750]
6 3/4

[6.125]
6 1/8

E

E

2

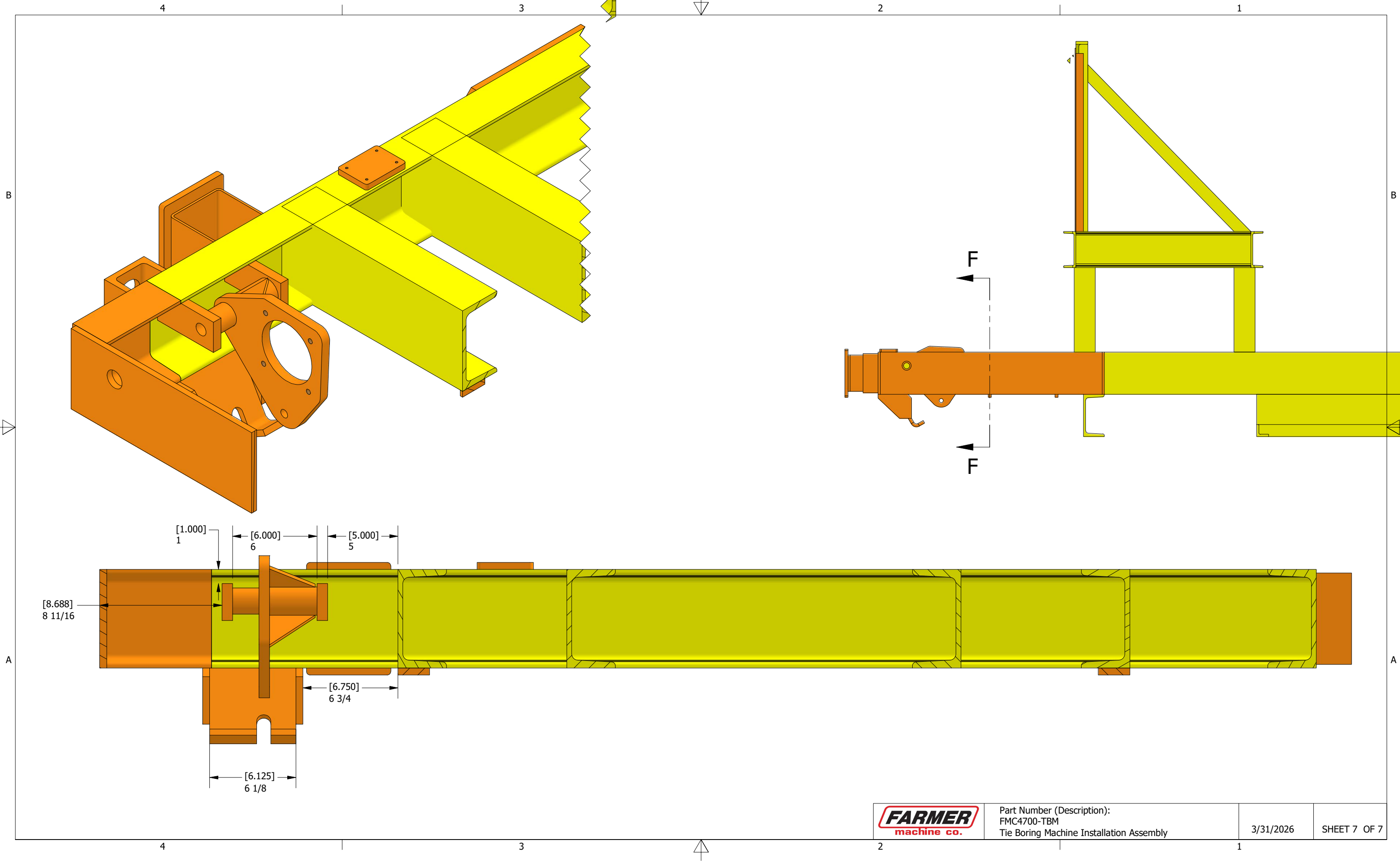
1



Part Number (Description):
FMC4700-TBM
Tie Boring Machine Installation Assembly

3/31/2026

SHEET 6 OF 7



Part Number (Description):
 FMC4700-TBM
 Tie Boring Machine Installation Assembly

3/31/2026

SHEET 7 OF 7