

A photograph of a sunset over a body of water, likely Lake Onalaska. The sky is filled with orange and yellow clouds, and the sun is low on the horizon, creating a bright glow. The water in the foreground is calm, reflecting the colors of the sky. In the distance, there is a dark silhouette of a shoreline with some trees and hills.

Lake Onalaska Rehabilitation Coalition (LORC) Update

Event: Lake Onalaska Protection & Rehabilitation District (LOPRD)
Annual Meeting

8/28/2024 6:30 p.m.

*All Photos are Lake Onalaska Sunsets,
Courtesy of Krista Engholdt*

Brice Prairie Conservation Association (BPCA) Project Description



- Dredging project runs from Red Pines to Schafer's parallel to North Shore Drive to link with existing channel to Dresbach
- Dredging begins after fall harvest of year when needed funds are met
- Dredged material volume expected to be about 18,500 cubic yards over 1500 feet to de-water at Metallica site and then transport to final site
- Method = Hydraulic dredging
- Will need to dig out sediment trap by mechanical means every few years
- Sediment samples taken, analyzed by Braun Intertec at request of Metallica; results are **no issues to crop land**

BPCA Current Budget Year Project Summary

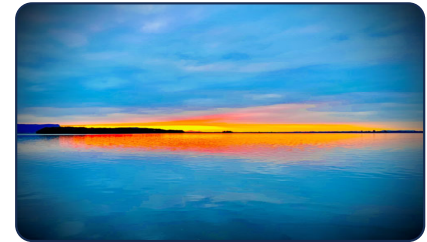
- Brice Prairie Conservation Association (BPCA) sponsored project to:
 - **Create nearshore fish overwintering area**, augmenting Lake Onalaska's diminishing overwintering fish habitat
 - **Restore nearshore summer and winter fishery**, accessible from shore & Mosey boat landing
 - **Create alongshore boat channel**:
 - With adequate water depth for watercraft to navigate
 - Free of summer surface vegetation mats, increasing oxygenated water and edge habitat to support fish and other aquatic life
 - **Increase navigation, improve ecosystem**
 - **Create affordably maintainable nearshore sediment trap**, capturing longshore-drift sediment resulting in reduced shallowing of Lake Onalaska offshore areas and prolong overwintering habitat project life
- Have fundraised \$135k (55% of estimate); local business to execute project **AT COST** (\$250k) to execute project within in the fall of 2025 (after the harvest)
- Project is shovel ready; acquired needed permits from WI DNR, US ACE, US F&W
- Total dredged material estimated to be nearly 20k cubic yards
- Continuing to apply for matching grant opportunities

Linkage with Deweeded Route

- Existing Channel (deweeded route)
- BPCA Current Dredging Project
- Transit from Schafer's to existing channel



What Is LORC?



- **Lake Onalaska Rehabilitation Coalition (LORC)** is advocacy group focused on our

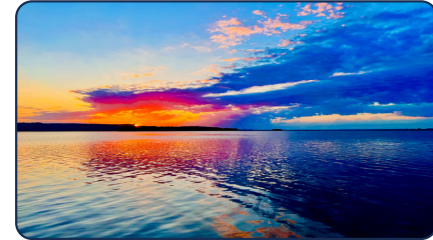
VISION

To Help Ensure A Healthy
Lake Onalaska for Fish,
Wildlife, and People

MISSION

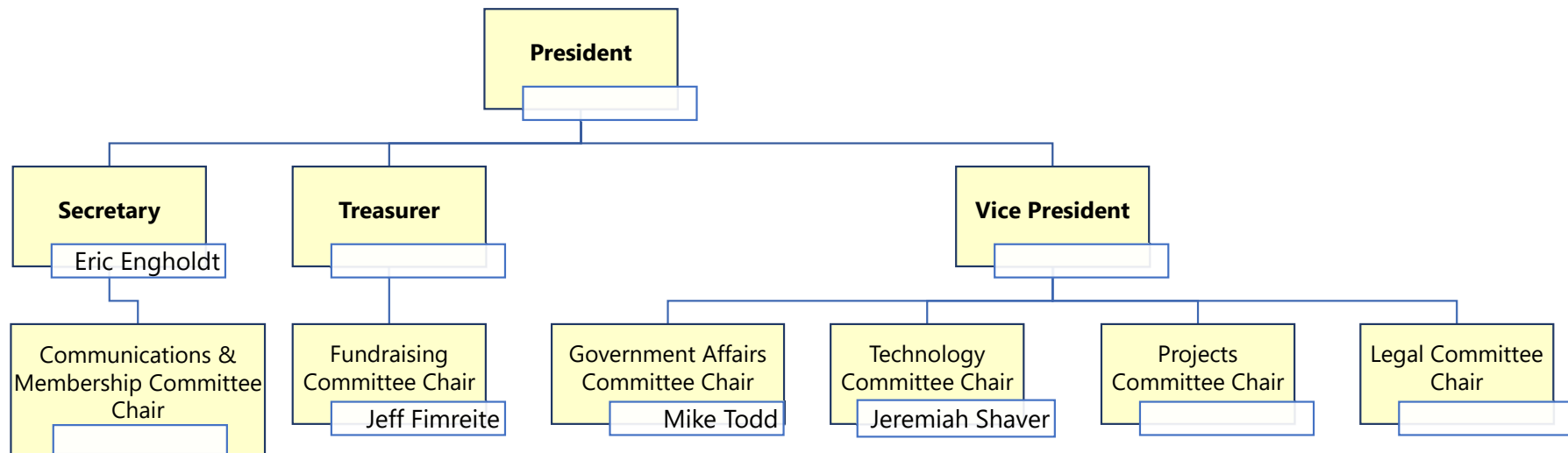
Preserve, protect, and restore the ecological
health and recreational value of Lake
Onalaska and its surrounding habitats

- LORC seeks to enhance community's enjoyment of Lake Onalaska through collaboration with partner governmental entities and lobbying political leadership to support meaningful projects
 - Brice Prairie Conservation Association (BPCA) is collaboration partner with stronger education focus than LORC
 - After current Dredging Project, LORC intends to lead most future project efforts
- Monthly Meetings → 3rd Tuesday

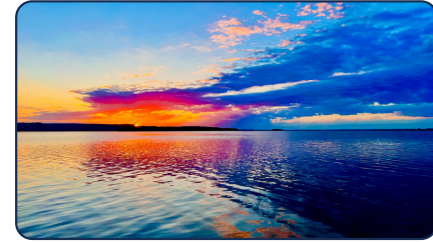


LORC Organization Structure

- Board – seven members (currently 3 vacancies)
 - Eric Engholdt, Jeff Fimreite, Jeremiah Shaver, Mike Todd
- Officers – four members **bolded** here
- Committees, Chairs shown (currently 3 vacancies)



What Makes LORC Distinctive from LOPRD?



Lake Onalaska Protection & Rehabilitation District (LOPRD)	Lake Onalaska Rehabilitation Coalition (LORC)
<ul style="list-style-type: none">• Special governmental unit formed in 1975 (Chapter 33, WI State Statutes)	<ul style="list-style-type: none">• Formed 2024 to influence governmental entities and political leaders to collaborate more deeply on actionable projects for Lake Onalaska• Intends to become non-profit, charitable organization (IRS 501(c)(3) / Wisconsin Charitable Organization, Chapter 202, Subchapter 11)
<ul style="list-style-type: none">• Property owners living within district boundaries may be assessed fees as part of their property tax levy (www.lakeonalaska.org)	<ul style="list-style-type: none">• Seeks to reach beyond shoreline property owners, recognizing the larger interconnectivity of Lake Onalaska ecosystem – fish, flora, fauna, as well as the human community and economy (e.g., tourism)
<ul style="list-style-type: none">• Cannot lobby nor fund-raise (aside from government grants and taxes)	<ul style="list-style-type: none">• Advocacy community of individuals and businesses supporting LORC's vision and mission, including fundraising with transparency and integrity

Projects – Active, Potential



- Active
 - Dredging northern Lake Onalaska areas for fish overwintering habitat
- Potential, priority and timelines to be determined
 - Blackdeer Slough
 - Fred Funk Landing
 - Brice Prairie Channel
 - Extension of Brice Prairie Channel
 - Sommers Travel Corridor
 - Channel Deepening by Rosebud
 - Halfway Creek Outlet
 - Extension of Dredged Areas
 - Spillway Landing/French Slough Culvert



BPCA Proposal
Update 20240611

Proposed Future Projects (Overview)

