

The background of the slide is a photograph of a calm lake. The water is a deep blue, reflecting the sky above. In the distance, there are low mountains or hills, also reflected in the water. The overall scene is peaceful and natural.

# Lake Onalaska Rehabilitation Coalition (LORC) Monthly Meeting

11/19/2024 6:30 p.m.

*All Photos Courtesy of Krista Engholdt*

# Agenda

- LORC Membership Update and Website Reminder
  - Postcards, business cards
- Update North Shore Lane Project
  - Rosebud Island Decision
- Update on Other Projects
- Open Discussion



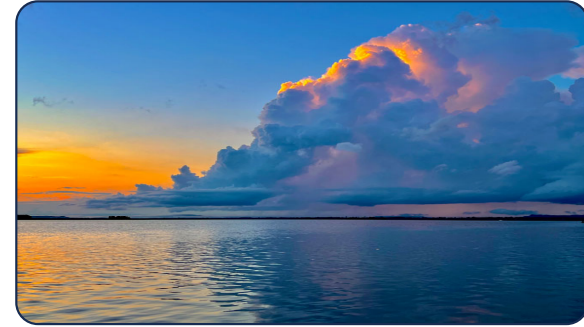
# LORC's Membership Update and Website Reminder



- We are now up to almost 90 members registered (from about 60 when we started LORC) → we have postcards and business cards to spread the word !!
- Finally LIVE → [www.lakeonarehab.org](http://www.lakeonarehab.org) (focus on LORC Org Structure, vacancies)
- If you have feedback and ideas, please connect with Eric or Krista Engholdt via:
  - [lakeonarehab@gmail.com](mailto:lakeonarehab@gmail.com)
- We will soon apply for microgrant from La Crosse Area Community Foundation for the purpose to create a more robust website for delivery sometime in mid- to late-2025 → Website should
  - Allow LORC members to join and / or unsubscribe
  - Allow for other visuals such as donation metrics for each project so generous givers can understand where their money is held → would require dynamic link to funding pool, or static update once per month before meeting
  - Help administrators more efficiently manage data and membership, particularly have the database of membership more easily incorporated such that new subscribers / cancelling subscribers are managed automatically
- We need more skilled people on the Technology Committee to brainstorm and do some of this work

# Update North Shore Lane Project

- Project is led by Brice Prairie Conservation Association (BPCA), LORC is in lock-step with BPCA
- LORC intends to lead future projects, *collaborating with and influencing* partner government agencies
- Rosebud Island → sought to be alternative site for dredged material but as of Thursday, November 14<sup>th</sup>, the USACE disapproved of this idea



# Other Projects Update

- List of 20 projects were discussed and prioritized at recent Fish and Wildlife Work Group (FWWG) meeting → FWWB is science advisory committee for River management, represented by all the major governmental entities
- Eight projects made the list with two being the most critical
  - Blackdeer Slough
  - Lake Onalaska Inlets (see next slides for images)
- Neither were deemed critical enough to receive funding
  - Funding timeline education, if it were funded
- This is one primary purpose for LORC → LORC must put pressure on government officials as well as partner organizations such as USACE, USFW, and WI DNR
  - We are contacting Derrick Van Orden, Brad Pfaff, Tammy Baldwin for ideas and perhaps credible assistance





# Other Projects Update

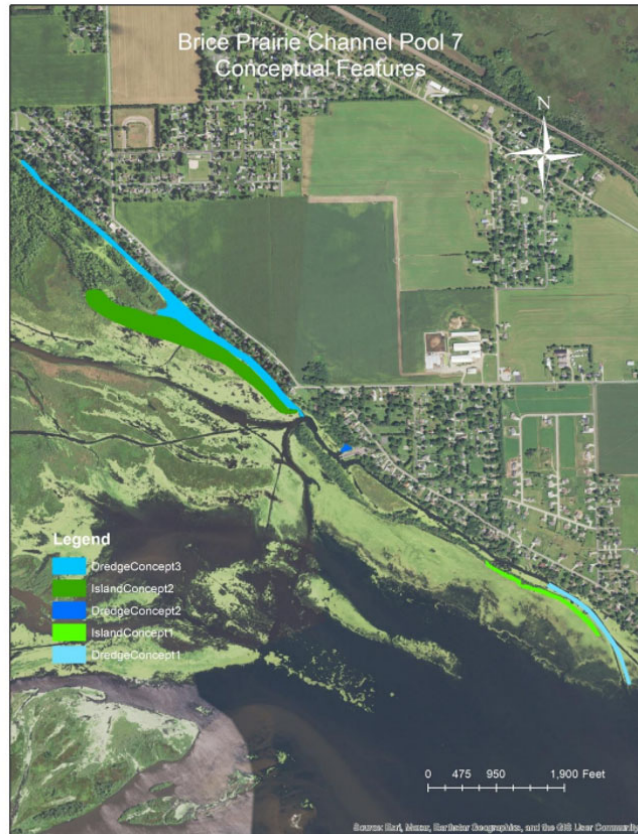


Figure 1. Brice Prairie Channel conceptual features. The green shaded zones represent areas of island restoration. The blue shaded zones indicate dredging zones to enhance depth diversity.

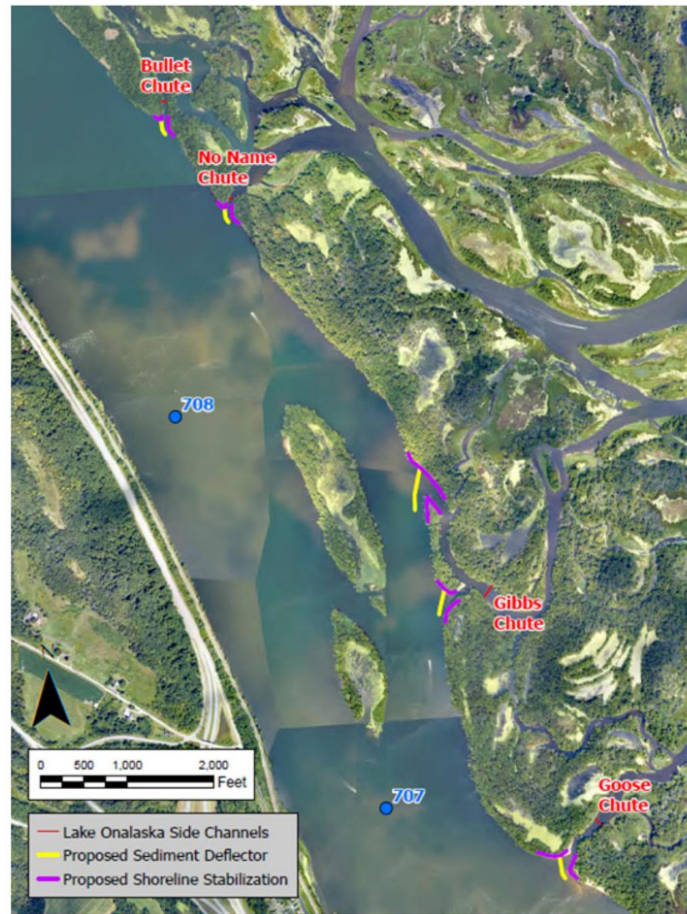


Figure 1: Proposed features: Bullet chute, No Name Chute, Gibbs Chute, Goose Chute



Figure 2: Propose features: Goose Chute, Sommers Chute, Proudfoot Slough, and Millers Slough

# Next Steps

- Another Call for Board Member volunteers as well as Officers and Committee Leads
- Distribute more postcards, business cards → GET THE WORD OUT!
- Connect with policymakers

