

## Early Help

Early Help is a supportive service, exploring yours and your families' wellbeing and will work with you to overcome challenges or issues. Early Help can explore services and support from within their own service or via referral to relevant agencies e.g. counselling.

They work with families to help them identify their own strengths and look at your own support networks, which can help in this difficult time.

Early Help service can make relevant referrals e.g. food bank, hygiene bank and we are available during the summer break and beyond, so there are staff available Monday to Friday (9am to 5pm) and dependent on the support needed, you may be able to have a specific Early Help Worker to lead the support with you .

Support ranges from one to one targeted support e.g. around routine and boundaries or can be more specific through assessment. Other services we can explore with families is the youth service, which offer one to one counselling, group support (virtually) and one to one advice for under 8s.

We can complete a referral to Early Help services, so they understand what your main worries/ concerns are currently and map with you what support may be beneficial.

## Important contact numbers

If you would like to speak to the Designated Safeguarding Lead:

Telephone number:01634 570706

07947 144640 (Out of school hours:)

Email address:

[kelly.lovell@cityofrochesterschool.org](mailto:kelly.lovell@cityofrochesterschool.org)

If you would like to speak to the **Medway Children's Social Care** and the Multi Agency Safeguarding Hub (MASH) for Children at Risk and Children in Need

Office hours Telephone: 01634 334466

Out of Hours Team Telephone (5.30pm to 9.00am and weekends): 03000 419191.

If you would like to speak to the **Kent Integrated Children's Services**

Front door: 03000 411111

Out of Hours Number: 03000 419191

### **Kent Police**

101 or 999 if there is an immediate risk of harm

A Full copy of the schools Safeguarding policy is available on the school website.

<https://cityofrochesterschool.org/>



**Parent Friendly  
Safeguarding Policy  
September 2022**

## Overview

We believe that all pupils should remain safe and free from harm. As such, we are committed to playing a full and active part in the multi-agency response to child protection concerns. Additionally, we as a school, have a legal duty to safeguard and promote the welfare of children and to have a Safeguarding Policy.

Staff at City of Rochester School, have day to day contact with pupils, and some direct work with families, which means that we have a crucial role to play in noticing signs of possible abuse or neglect.

## How is information used?

Confidential records are kept of any safeguarding concerns and information is shared on a need to know basis.

We are notified by the police if they attend any incidents involving domestic abuse in a household where the child attends our school.

We follow procedures laid down by the Medway and Kent Safeguarding Team which means on occasions that we have to consult other agencies. We aim to discuss concerns with parent/carers first, before any referrals are made, unless we believe that such a move may be contrary to a child's welfare.

## Designated safeguarding lead

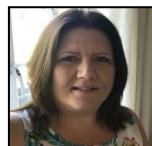
The Designated Safeguarding Lead takes the lead on all safeguarding matters within the school.

At City of Rochester School this is Kelly Lovell, Assistant Head teacher.

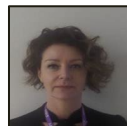


There are also Deputy Designated Safeguarding Leads within the school, who support with safeguarding concerns.

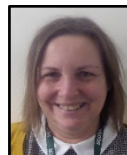
Michelle Homer



Alicja Emmett



Alison Barton



We listen to our pupils and take seriously what they tell us. All our staff receive safeguarding awareness and children are aware of the adults they can talk to if they have any concerns.

Our nominated Safeguarding Trustee is Claire Cooper.

## How do we keep children safe?

We create a safe learning environment and ensure children know who they can talk to if they are upset or worried about anything.

We also provide opportunities for children to develop their understanding of risks and keeping themselves safe, through education on internet safety awareness, positive relationships, bullying etc.

We are committed to keeping our pupils safe. Any concerns are reported to a Designated Safeguarding Lead who will then take any action needed to ensure the wellbeing and safety of children.

Our first priority is your child's welfare and we will usually discuss with you any concerns we have about your child. However, there might be rare occasions when we have to provide information to or consult other agencies such as Children's Services Social Care before we contact you.