

# Culture & Agriculture Exhibition 2026 Sponsorship Invitation



## Dear Community Partner,

We invite you to support one of Central Wisconsin's most beloved and long-running art traditions - Culture & Agriculture 2026, hosted by Gallery Q Artists Cooperative in downtown Stevens Point.

Now in its 38th year, Culture & Agriculture is a national juried exhibition that explores the rich intersections of rural life, farming, food systems, and cultural identity through the visual arts. For the second year, this prestigious event will be held at Gallery Q, a member-run art gallery dedicated to promoting local art and fostering creative community engagement.

With your support, we can continue to elevate this exhibit's impact—offering cash awards to artists, expanding community outreach, and creating a free, educational experience for hundreds of local residents and visitors. Sponsorship contributions directly support exhibition programming, marketing, juror honorarium, and community engagement efforts.

We offer a range of sponsorship levels with corresponding benefits including:

- Recognition in print materials, social media, and our online catalog
- Logo placement in-gallery during the exhibition
- Public thanks during the opening reception

We would be honored to partner with you in celebrating creativity, agriculture, and community. Please feel free to contact us with any questions or to discuss how your business or organization can participate.

Warm regards,  
Gallery Q Artists Cooperative



[culture-agriculture.com](http://culture-agriculture.com)

1108 Main Street, Stevens Point, WI 54481  
[Culture-agriculture@QArtistsCooperative.com](mailto:Culture-agriculture@QArtistsCooperative.com)  
(715) 345-2888

# Culture & Agriculture 2026 Sponsorship Levels

Est. 1985. A Tradition of Art. A Celebration of Agriculture

**ROOTS – \$1,000 Best of Show Sponsor**

**TRUNK – \$500 People's Choice sponsor**

**HARVEST – \$500 - Reception sponsor**

**BRANCH – \$450 - 1st Place award sponsor**

**VINE – \$350 - 2nd Place award sponsor**

**LEAF – \$250 - 3rd Place award sponsor**

**BERRY – \$100 - Honorable Mention sponsor**

**SPROUT – \$50+ General sponsor**

**SEED – \$25+ General Supporter**

## IN-KIND SPONSORSHIP

All sponsors will be acknowledged across promotional materials, including posters, the exhibition catalog, website, and social media. Recognition is tiered: the placement, size, and frequency of your logo or name will reflect your sponsorship level. Top-tier sponsors (ROOTS, TRUNK, HARVEST, and BRANCH) receive priority placement with larger logos and increased visibility. All sponsors are valued and will be represented proportionally throughout all materials.

See next page for more details about your investment in the arts.



**Culture & Agriculture  
Exhibition 2026**  
*Hosted at Gallery Q*



## **Sponsorship Levels & Benefit**

### **ROOTS – \$1,000**

Premier Sponsorship – Best of Show | 1 available

- Premium logo placement on all signage, print, and digital materials
  - Recognition on the Best of Show certificate and exhibition wall label
  - Verbal acknowledgment during the opening reception award ceremony
  - Sponsor spotlight on Gallery Q and Culture & Agriculture social media and website
  - Complimentary printed catalog of the 2026 exhibition
  - Optional opportunity to present award during reception
- 

### **TRUNK – \$500**

People's Choice Award Sponsor | sponsored by the Stevens Point Festival of the Arts

- Logo featured on People's Choice voting station and award certificate
  - Recognition on digital and print materials
  - Recognition at the closing announcement of People's Choice winner on social media
  - Listed on the sponsor page of the exhibition catalog and website
- 

### **HARVEST – \$500**

Reception Sponsor | 2 available

- Logo/signage at the refreshments area during the opening reception
  - Recognition in exhibition materials and social media
  - Verbal acknowledgment during the event
  - Listed in the sponsor section of the exhibition catalog and website
- 

### **BRANCH – \$450 | 1 available**

**Culture & Agriculture  
Exhibition 2026**  
*Hosted at Gallery Q*



First Place Award Sponsor

- Recognition in printed materials and First Place certificate
  - Logo featured on the sponsor page of the digital catalog and website
  - Social media acknowledgment
- 

**VINE – \$350 | 1 available**

Second Place Award Sponsor

- Recognition on signage and Second Place certificate
  - Listed in digital catalog and on exhibition website
- 

**LEAF – \$250 | 1 available**

Third Place Award Sponsor

- Logo included on Third Place certificate and event signage
  - Name listed on the sponsor page of the catalog and website
- 

**BERRY – \$100 | 1 available**

Honorable Mention Sponsors (3 available)

- Name or logo featured on one Honorable Mention certificate
  - Recognition in sponsor listings (digital catalog + website)
- 

**SPROUT – \$50+**

General Sponsor

- Acknowledged on social media and on in-gallery signage

**Culture & Agriculture  
Exhibition 2026**  
*Hosted at Gallery Q*



---

**SEED – \$25+**

General Supporter

- Acknowledged on social media and on in-gallery signage

**IN-KIND SPONSORSHIP**

Support with Goods or Services

- Contributions such as food, printing, promotion, or services
- Recognized at the equivalent cash tier based on value of donation

---

**Sponsor Recognition in Promotional Materials**

All sponsors will be acknowledged across our promotional materials, including posters, the exhibition catalog, website, and social media. However, the placement, size, and prominence of each sponsor's logo or name will vary based on sponsorship level. Our top-tier sponsors (ROOTS, TRUNK, HARVEST & BRANCH) receive priority placement with larger logos and more frequent mentions, ensuring maximum visibility. Lower-tier sponsors are still valued and will be included proportionally throughout materials.

Gallery Q Artists Cooperative  
1108 Main Street, Stevens Point, WI 54481  
Email: [Culture-agriculture@QArtistsCooperative.com](mailto:Culture-agriculture@QArtistsCooperative.com)  
(715) 345-2888

**Culture & Agriculture  
Exhibition 2026**  
*Hosted at Gallery Q*



**Culture & Agriculture 2026 Sponsorship Form**  
**Deadline to confirm Sponsorship is December 1, 2025.**

Payments must be received by January 15, 2026.

Business/Organization Name: \_\_\_\_\_

Contact Person: \_\_\_\_\_

Phone: \_\_\_\_\_ Email: \_\_\_\_\_

Mailing Address: \_\_\_\_\_

City: \_\_\_\_\_ State: \_\_\_\_\_ Zip: \_\_\_\_\_

Website: \_\_\_\_\_

Social Media: \_\_\_\_\_

Select Sponsorship Level:

☐ ROOTS – \$1,000   ☐ TRUNK – \$500   ☐ HARVEST – \$500   ☐ BRANCH – \$450

☐ VINE – \$350   ☐ LEAF – \$250   ☐ BERRY – \$100   ☐ SPROUT – \$50+   ☐ SEED – \$25+

☐ IN-KIND SPONSORSHIP (please describe and list value):  
\_\_\_\_\_

Total Amount Enclosed: \$ \_\_\_\_\_

Please make checks payable to: Gallery Q Artists Cooperative

*Mail to: 1108 Main Street, Stevens Point, WI 54481*

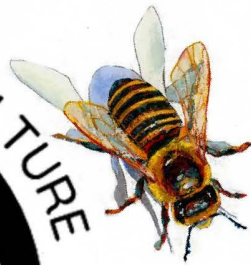
Please email [Culture-agriculture@QArtistsCooperative.com](mailto:Culture-agriculture@QArtistsCooperative.com) if you would like to pay by credit card.

Thank you for supporting art, agriculture, and community!

Gallery Q Artists Cooperative | 715-345-2888



CULTURE & AGRICULTURE



JESSIE FRITSCH  
"HONEY BEE"  
ENCAUSTIC

## CULTURE & AGRICULTURE

is an annual juried exhibition that highlights art reflecting the beauty and rich traditions of agriculture and the land, featuring 64 pieces of art from 55 artists in 13 different states.

*The NEW HOME for this National Exhibit is*

## GALLERY Q

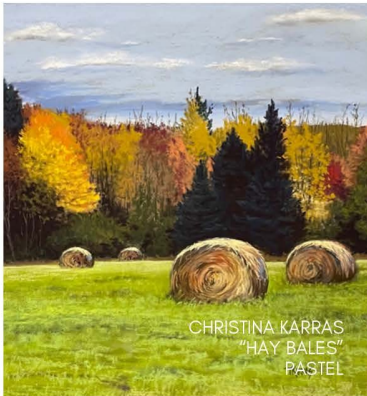
### ARTISTS COOPERATIVE

1108 MAIN ST | STEVENS POINT | WI 54481

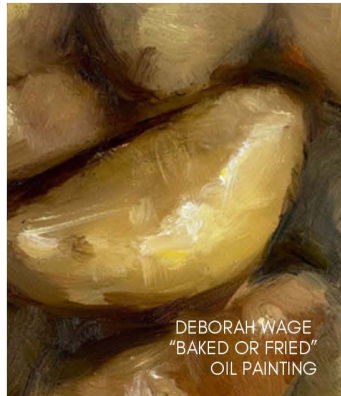
OPEN EVERY DAY, 11AM-4PM

[WWW.CULTURE-AGRICULTURE.COM](http://WWW.CULTURE-AGRICULTURE.COM)

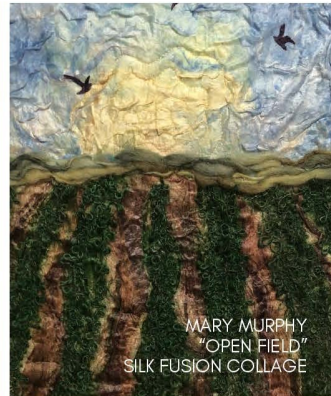
MARCH 1ST- APRIL 22ND, 2025



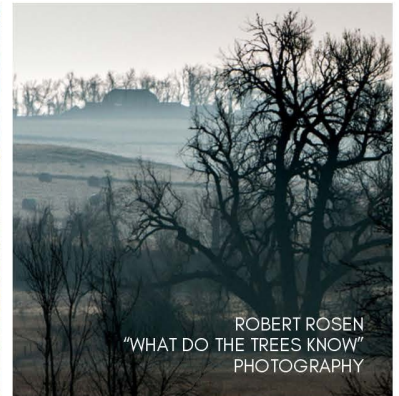
CHRISTINA KARRAS  
"HAY BALES"  
PASTEL



DEBORAH WÄGE  
"BAKED OR FRIED"  
OIL PAINTING



MARY MURPHY  
"OPEN FIELD"  
SILK FUSION COLLAGE



ROBERT ROSEN  
"WHAT DO THE TREES KNOW"  
PHOTOGRAPHY

**YOU ARE CORDIALLY INVITED**  
to our Opening Reception  
**Saturday, March 1st from 5:00-7:00PM**

**Awards will be announced at 6:00PM.**

**A light reception will be served.**

VOTE for your favorite for the "People's Choice" Award.  
Gallery admission is always FREE and open to the public.  
Art showcased will be available for sale.



**LEE AYERS**  
Jewelers  
Custom Goldsmithing  
& Repair Services

**\$1000 BEST OF SHOW  
AWARD SPONSOR**

## THANK YOU TO OUR AWARD SPONSORS



STEVENS POINT/PLOVER AREA  
\$500 PEOPLE'S CHOICE



\$450 1ST PLACE



\$350 2ND PLACE



\$250 3RD PLACE

PLUS THREE \$100  
HONORABLE MENTION  
AWARD SPONSORS



- Gene & Mary Lee Reineking | RED SKY STUDIO
- Roz Schuettpelez | QUILT FIBER ARTIST