

TOGETHERDOM

An animated film by Studio Wizkid



Logline

Following a dark premonition from his bedridden mother, a tongue-tied spellcaster joins forces with a ragtag team of heroes to save their world. Hopefully.

Synopsis

Kyte Dawnquest, a tongue-tied spell-caster, is stuck taking care of his bedridden mother, **Ruby**, in the scrappy little outpost where they live. Ruby, shaken by an apocalyptic premonition, urges him on a reluctant quest to "save the world". She enlists her old comrade, penniless treasure hunter, **Maggie Tenderpeach** to chaperone the boy. (Maggie's rent is long past due; he's clearly in it for the loot.)

Armed with a spell scroll and an immediate disdain for each other, they set out to awaken a dragon guarding the fabled **Amulet of Coralune**. Facing a horde of undead knights, a grumpy dragon, Kyte's magical ineptitude, and Maggie's fear of heights, they barely escape with their lives-amulet in tow.



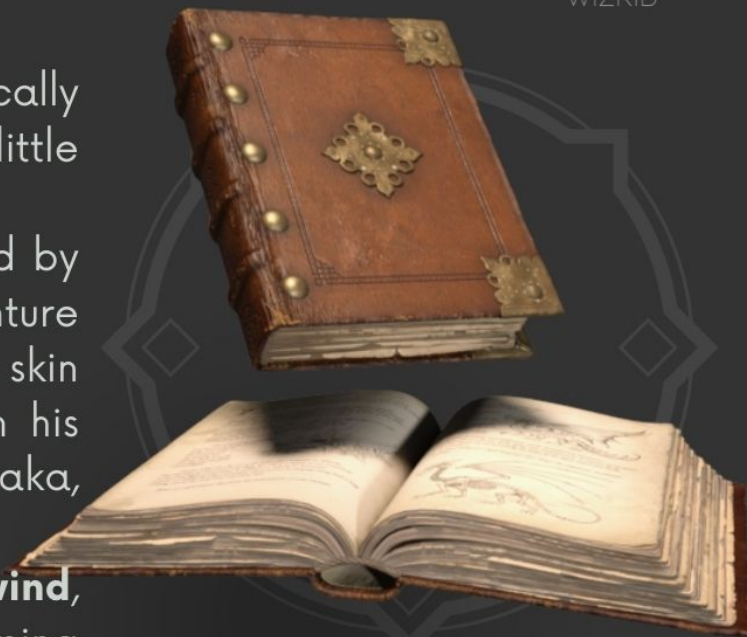
Amulet of
Coralune

Synopsis


Enter the formidable, burnt out warlock, **Werdna Vilemist**. Practically drowning in ennui, Werdna wants to shake things up by causing a little global chaos. For fun.

Homebound, Maggie and Kyte encounter **Princess Omi**. Opressed by the duties of her crown, Omi desperately seeks any morsel of adventure outside the castle walls. She has a connection to the amulet- her glass skin activating its mysterious magic. Werdna catches wind of this when his nefarious orb senses a disturbance. He decides to "investigate." aka, wreak havoc.

Escaping Werdna's viscious pursuit, the team is saved by **Root Greywind**, a shape-shifting recluse with a personal vendetta. Facing the looming danger of Werdna and his henchmen, who begin to realize that together these losers just might pose a threat, the ragtag team follows the amulet's direction; leading to a final showdown.



Synopsis



Facing Werdna in his nefarious keep, the team is pit against itself in a set of trials designed by the cunning warlock. Amidst battles and mishaps, Kyte masters his magical abilities, Maggie conquers his fear of heights, Root confronts her former mentor (Werdna), and Omi has one hell of an adventure.

The reluctant heroes emerge victorious, empowered by their unity. However, triumph is shadowed by loss- Ruby secretly sacrificing herself to turn the tide of battle.

The film concludes with Maggie and Omi's marriage, while Kyte and Root start a new chapter together; reflecting on their epic quest, the enigma of Coralune, and the amulet that leads to its hidden location. Will they follow its call?



About + Theme



Togetherdom is a **Sword & Sorcery Epic** featuring a diverse cast of characters in an exciting, original fantasy world. The film's theme is encapsulated in a simple yet powerful message: **None of us is as good as all of us together.** In our world, where isolation can lead to death, depression, and resentment, the film emphasizes the importance of unity, community, and the synergy that occurs when unique individuals unite to confront challenges that are insurmountable alone.

The ENSEMBLE

Kyte Dawnquest

Tongue-tied spell-caster, reluctant hero. Dedicated to healing his mother, he embarks on a quest of unexpected magic. Kyte suffers from "spellfright", a common ailment for budding warlocks.





Ruby Dawnquest

Wise seer and loving mother. She urges Kyte with an apocalyptic premonition, sensing the boy has heroic potential. Once a powerful mage, an unknown illness has stricken her.

Maggie Tenderpeach

Spirited half-orc, penniless treasure hunter. His zest for adventure fuels the quest, adding humor and strength. (Don't mention his fear of heights.)



Princess Omi

Regal yet disinterested in her royal status, becomes a powerful ally to our heroes. Her glass skin activates the Amulet of Coralune, guiding their quest.



A character with dark skin and short, wavy brown hair with small, pointed ears. She is wearing a light brown, textured cape over a grey, lace-trimmed dress. She holds a long, gnarled wooden staff with a glowing green orb at the top. A large, bushy brown tail is visible behind her.

Root Greywind

A shapeshifting recluse, was once mentored by Werdna. Exiled, she aids the ragtag team, confronting her mentor-turned-foe.

A close-up of the Werdna Vilemist character, a skeletal figure with a dark hood and ornate armor. He has a menacing expression with glowing eyes and a wide, toothy grin. He is holding a glowing blue flame in his right hand. The background is dark with a faint, stylized geometric pattern.

Werdna Vilemist

Malevolent Seeker, fallen warlock; pursues the Amulet of Coralune to fuel his insatiable desire for destruction, posing a grave threat to our heroes and their world.



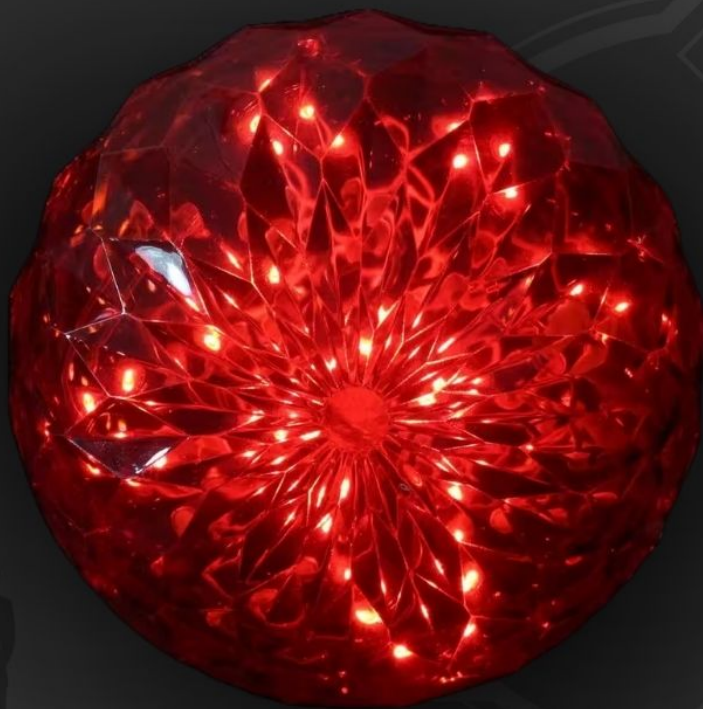
Soul

A hovering ball of fire, embodies Werdna's conscience- offering comic relief to his malevolence. A playful guide, it adds whimsical dynamics to the dark and magical narrative.



Frick & Frack

Werdna's loyal henchmen. They speak exclusively in riddles, often to the chagrin of their master.



The Odradex

A colossal crystal ball, serves as Werdna's oracle. It speaks with the voice of a thousand fallen heroes.

Whinnykin

Species of horse-like creatures, are discovered grazing in serene landscapes, their rhythmic snorts echoing through the air. Steadfast aids to our heroes, facilitating their travels across the world.



Greedwurm

A wild and untamed dragon, its scales gleaming with primal fury. Fiercely guards the Amulet of Coralune in the remnants of its fallen tower.

The WORLD

Tome: A Fantasy Planet of Endless Wonder

Tome, a sprawling fantasy planet, boasts diverse biomes, vibrant cultures, and ancient magic woven into its very essence. A realm of boundless wonders awaits, each corner teeming with fantastical secrets and untold adventures.



World Map

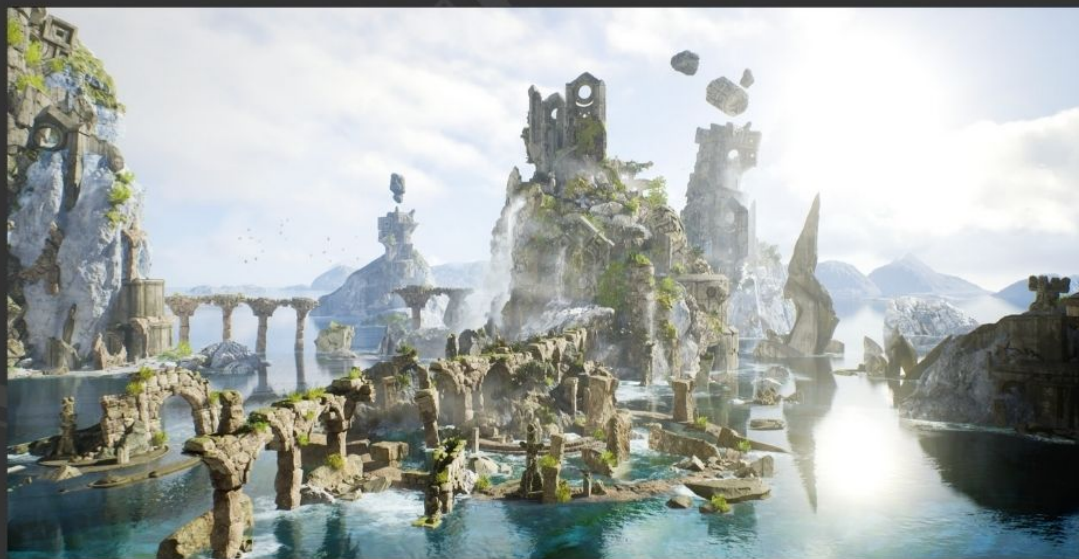


PAGE 20

The world of Tome is comprised of five major landmasses, each of which has twelve individual kingdoms. In the reign of kings, the seven seals were broken in order for the covenant to be forged anew.



snort, snort



Welcome,
traveler!





Tools/ Tech



Togetherdom is being developed using **Unreal Engine**, **Cinema 4D**, **Adobe After Effects** and **Premiere**.

Unreal Engine is the primary software.

Budget motion capture (face and body) is also utilized.



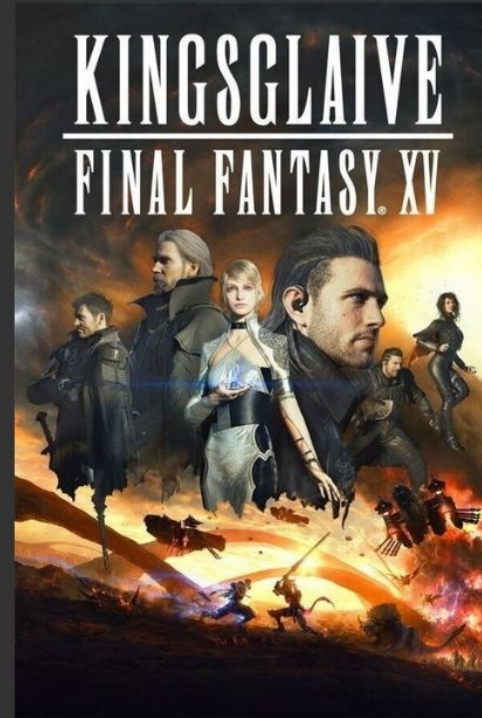
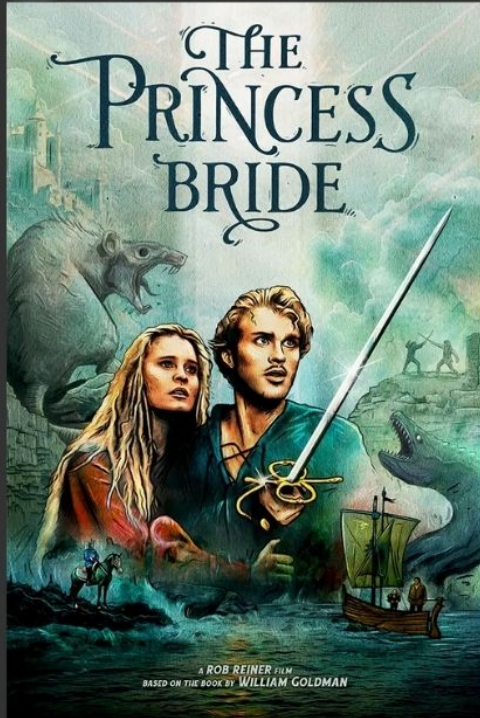
UNREAL
ENGINE



CINEMA 4D



Influences



Timeline



Current State



Pre-Production

- Script (completed & copywritten) ✓
- Storyboard (in progress)
- Design ✓
- World Building ✓
- Casting

Production

- Asset Building (in progress)
- Animation (in progress)
- Lighting (in progress)
- Rendering

Post-Production

- Sound Design
- Editing
- VFX
- Compositing

Distribution

- Marketing
- Planning
- Premiere
- Release

Needs



With a compelling concept, script, and pre-production groundwork in place, our 3D film is poised for production. This project needs a dynamic team to join this creative adventure. Here are the major needs:

- Artists
- Animators
- Designers
- Producer
- Creative Advisors
- Marketing
- Funding
- Investment
- Distributors

Studio Wizkid

Peter Mark, founder and creative director of Studio Wizkid, is a Brazilian-American visual artist, animator, and performer. His animations have been featured on Channel 4, MuseumTV France, Mindsparkle Mag, NotLikeThat Records, and Vimeo Staff Picks.

Installations of his work have been showcased internationally at Teatr Studio Warsaw, Berlin Ani Fest, Wuzhen Theater Festival, The Prague Quadrennial, Hangzhou Theater Festival, Shenzhen Bienalle, CultureHub, La MaMa NYC, and on display at Hauser & Wirth, Los Angeles.

He holds an MFA from CalArts (2017)



Thanks!

CONTACT:
peter@problemlibrary.org