



SUMMER 2025

# THE FIELDENDER

THE FIELDEND RESIDENTS ASSOCIATION NEWLETTER – 65th ANNIVERSARY SPECIAL

## Celebrate 65 years at our summer party

We're excited to invite all residents to a special celebration marking 65 years of Fieldend on Sunday 29th June.

Join us for a relaxed, family-friendly day starting with children's games before lunch, followed by a picnic on the green. In the afternoon Music will be provided by Luca's band (No. 9) and we'll also have a Fieldend Photo Timeline display to celebrate the people and

moments that have made our estate special over the decades.

There'll be a cake table, and drinks will be provided by FRAL – just bring along a picnic blanket or outdoor chairs, and a contribution to the picnic to share.

We hope that holding the event during the

**DATE FOR YOUR DIARY  
SUNDAY 29 JUNE**

day makes it easy for everyone to join in – and we'd love to welcome back ex-residents too. If you're in touch with any old-Fieldenders, please pass on the invitation! All those with strong ties to Fieldend – including children, grandchildren, and long-time friends – are warmly welcome.

Let's celebrate our unique community together!



**BE A PART OF IT!**  
You may have received a flyer about Kilian's project photographing the residents of Fieldend. If you are keen to be part of it and our history, please contact him at number 31.

## ROBBERIES – BE ALERT!

Sadly there has been a spate of theft from cars and, more recently, from a garage when a large number of items were stolen in broad daylight.

There has also been a series of night time car entries, potential thieves opening cars looking for things to pinch. Some residents may have left their cars open but the thieves also possibly use

devices to relay the signal from your car key in your house to unlock your car. To prevent this you can keep your car keys in a Faraday box - Google it if you want to know more.

### WHAT CAN YOU DO?

If you are around the estate, whatever the time of day, and you see unfamiliar vehicles or people

prowling around or loading up a vehicle don't assume it's OK. Don't confront the thieves but ask around to check if anyone knows who they are or even call the police.

In the meantime FRAL have decided to install a few dummy CCTV cameras as a deterrent. We can't know if this will actually make a difference but it can't hurt and it costs very little.

## MEET YOUR NEIGHBOURS

# Sheila at number 23

We hear from one of the original Fieldend residents about her memories of living here and how things have changed

Portrait Kilian O'Sullivan

### When did you move to Fieldend and what brought you here?

I moved here in 1960, when the houses were first built. My husband had taken a job at NPL in Teddington, and we wanted to live within walking distance. We wrote to estate agents, and this was the only place available at the time, as houses were selling like hot cakes. I think the houses were finished in numerical order, clockwise. So when we moved in, about half the estate was already filled and we watched the other half moving in. Everyone was new.

### Have you had any memorable events while living in Fieldend?

Over the years, many memorable events have occurred. I recall one time when my mother was seriously ill with cancer in Brighton, and I was traveling back and forth. My neighbors were incredibly helpful, meeting my children from school, providing them with snacks, and looking after them until my husband returned from work. Marion, another neighbor, was always there to nurse anyone who had an accident or bruise. My impression



Sheila says she feels very lucky to have lived in Fieldend for 65 years

of Marion is that she's like the air, you know - everywhere.

### What does being a good neighbour mean to you?

People in Fieldend have always helped each other and everyone has different gifts and ways of helping, whether it was picking up children from school, mending things, offering wise words, listening to worries or simply having a friendly chat. Being a good neighbor can also mean finding amicable solutions to community issues. I remember there was once a bust up about dogs: families with children but no dogs were worried about them running around and leaving a mess - dogs vs children. In the end I think the children won, but it was resolved amicably. We've been fortunate to live with reasonable people who are willing to talk and explain things politely.

### How has Fieldend changed in the time you've lived here?

Fieldend has changed quite a bit since I first moved here. When we arrived, there were over 70 children living here, and they were always out playing. You'd always know where the children were from the pile of bikes. You'd either have no children or 5,6,7 of them all at once. And when they wanted the loo, they would just go into the nearest house. Now, there aren't as many children, and it feels much quieter during the day. The area also looks different. I used to like it when it was neater and tidier, but I also appreciate all the flowers we have now. I also miss the Red Square, which was a different colored asphalt that gave the area a unique character. However, despite these changes, Fieldend is still a peaceful place to come back to, and I feel very lucky to have lived here for so many years.



## We want to see *your* old photos

Please get involved in the anniversary celebrations

As part of our upcoming 65th anniversary celebrations, we will be mounting a display of historic photographs such as the ones pictured here which were kindly contributed by Marion at number 16.

If you have any great photographs that you could add to the collection - however old or new - please bring them to us and we will return them. We can accept digital photos as well as prints so please get in touch.



Marion has mislaid a box which contains more photos and also the programmes from previous years' summer parties. If you have any idea as to its whereabouts, please do get in touch!



## NEWS

### REPAIRS AND DECORATION UPDATE

Mark Tullet has recently completed his snagging repairs to last years Joint Painting Project. The overall assessment is that from quite a poor general state 12 years ago, the houses are now generally in much improved condition and we are in recovery! This is in great part thanks to the efforts of so many of you who have repaired and renewed your houses. This helps the paint last much longer and reduces wood rot.

To give residents even more time to book in any repairs Mark will undertake the painting survey one year earlier than previously - spring 2026. That way we will all have 2 years to make essential repairs (and save up!).

### LIMEWATCH...

Electric rental bikes have created a minor transport revolution in London in recent years, they can be a great way to get around but when they stop moving they can cause problems. In recent months increasing numbers of Lime & Forest rental bikes have been parked on the paths around Fieldend. This is not a good place to park them because paths are for people to walk on. So if you need to park a rental bike on Fieldend please park it in a parking bay or on the side of the road - thanks!!!





# NATURE CORNER

## Superb owl!

Among the many pleasures of living in Fieldend is the array of resident, visiting and over-flying bird life, although it is a sad fact that there has been a steady decline in the numbers and variety of many species in recent years.

One visitor, however, who can usually be relied upon to excite interest with its haunting, wavering hooting call is the tawny owl, often referred to as the brown owl. This year was no exception and residents will have heard several birds making their hooting and yapping 'keey wit' cries in the early hours during several nights during the Autumn as birds began gathering for mating. In February they could be heard again, signalling the beginning of the time for nesting.

The wooded nature of the local area with its many tall broadleaf trees, parks and churchyards provides the perfect habitat for tawny owls. There are suitable nesting sites and there is a bountiful supply of food: mice, voles and invertebrates. They are highly efficient predators with their keen sight in low level light conditions and their highly sensitive hearing which can be up to a hundred times better than that of humans. Their soft, fluffy wing feathers also make them virtually silent in flight making them even more deadly hunters.

Look out for Tawny owls and their appealing cousins little owls in Bushy Park where they have been resident for many years. Favourite nesting sites are hollows in trees which provides safe shelter for raising their young. They have also been known to use abandoned magpie and jay nests.

Over the centuries, tawny owls have held a complex place in folklore, sometimes feared and sometimes venerated. They were often associated with wisdom and intelligence but were feared by some as harbingers of ill fortune.

Remember to listen out for them when Autumn comes.



Owl used for illustrative purposes only

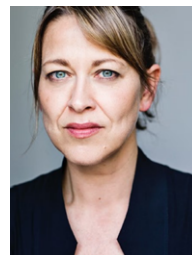


## Lights camera action...

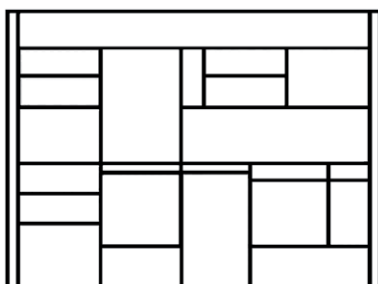
### Fieldend takes centre stage again as a film crew moves in to the estate

The magic of Disney (plus) briefly came to the neighbourhood at the end of May. Comedy drama *Alice and Steve* chose Fieldend to film some sequences for the upcoming Disney+ television production for Clerkenwell Films.

Jemaine Clement from *Flight Of The Conchords* and several Hollywood blockbusters is to star alongside Nicola Walker from *Spooks* and *Last Tango in Halifax*. This is the third major film production in recent years and is proving to be a useful source of income for the estate.



**Top: Filming under way in the East Square and on Waldegrave Park. Above: *Alice and Steve* stars Jemaine Clement and Nicola Walker.**



# FRAL

FIELDEND RESIDENTS ASSOCIATION LIMITED

**Chair & Maintenance**  
Theo Williams - No 44

**Secretary**  
Judith Palmer - No 7

**Minutes Secretary**  
Elizabeth Blunt - No 48

**Finance Director**  
Lesley Alexander - No 13

**Treasurer**  
Lesley Alexander - No 13

**Gardens**  
Sally Stones - No27

**Conservation and Planning**  
Tim Bystedt - No 28  
Zoe Fudge - No 12

**Newsletter design**  
Chris Barker - No 32

**Fieldend book photography**  
Kilian O'Sullivan - No 31