



AUTUMN 2025

THE FIELDENDER

THE FIELDEND RESIDENTS ASSOCIATION NEWLETTER

Kilian's Andrew model atop the bonfire prior to burning



Bonfire makes paper

A big thank you to everyone who helped make Fieldend's bonfire night celebrations a roaring success again.

From sausage-wrangling to fire-building, everyone pulled together to make it another evening to remember – and a delicious morning's breakfast was cooked on the embers as well!

A special thanks to Kilian, whose excellent wicker Andrew somehow managed to make it into the pages of The Times' diary that week...



NEWS



Parking: The Struggle Continues

Random people using Fieldend as a car park creates traffic and reduces available spaces. That's why, some years ago, FRAL introduced the Fieldend Parking Permits. The idea is they create uncertainty for rogue parkers. But they only work well if lots of residents and their visitors' cars display them. So, if you don't already do so, please think about putting a parking disc in your car (FRAL has more if needed).

Roof Rescue: Coming soon

There seem to have been more leaves than ever this year, but help is at hand. We have booked another visit from Dan the Roofer. He and his team will clear the roofs, check the drains, and warn you if they see any problem which needs attention. As before, please let Theo know if you DON'T want Dan to visit your roof.

MEET YOUR NEIGHBOURS

Jim and Sarah

From croquet on the lawn to clapping for carers during lockdown. As part of our ongoing series, discover what makes Fieldend so special for the Strikes

Portrait Kilian O'Sullivan

When did you move to Fieldend and what made you decide to move here?

We have lived in Fieldend for 22 years. We moved here after living in Victorian, Edwardian, and Georgian houses and wanting a modern home. We were interested in modern architecture, and Jim was familiar with Fieldend from his work with architect John Farmer, who used to live here. I had also visited the estate before and was amazed by the properties. When we came to look at our house, we bought it almost immediately. We later found out that our house was once joined to



Jim and Sarah outside No. 24 with Fieldend's friendly longtime windowcleaner, Mick.

the one next door and was used as a music salon.

What makes Fieldend different?

What makes Fieldend special to us is the sense of community. The layout of the estate encourages social interaction, and it's easy to meet people and say hello. Our favourite thing is seeing children play in the square, knowing it's a safe area. We've celebrated many milestones here, including our 40th and 50th wedding anniversaries. Jim had his 80th birthday here, and Sarah's having her's this year. We also enjoy simple, domestic moments, like when we set up a

croquet lawn outside that brought many neighbours together for an afternoon of fun.

What was it like living in Fieldend during lockdown?

Living in Fieldend during the COVID-19 pandemic was a "godsend". We felt a strong sense of community and support among our neighbours. We could go outside and still see and hear people, without feeling caged up. We all clapped together, and one of our neighbours ensured we all had a good supply of bread. It felt like we were not alone in what was happening.

Lights out, camera, action!



Ever wondered what it's like to have a film crew take over your home? No 8 recently had the surreal experience of hosting a production for five days, and Sarah Dietz shares what it was like

Day one began with the props department removing all of our downstairs furniture, everything except the curtains. I was amazed when I came downstairs at 10:30am to find a completely empty room. I'm not precious about furniture and belongings, so I wasn't too worried when all of my things disappeared into the back of a removals van, but it was still quite a sight. Much of the filming involved night scenes which, due to time restrictions, needed to be shot during the day. This meant the house had to become a blackout zone. Within one day, scaffolding was up around the property, and by the end of day two, the blackout was installed, and the room had been dressed with props. The speed was amazing.

We stayed in the house for the first two nights, and it was utterly surreal. Waking up when it should be light but finding ourselves in pitch darkness was disorienting. Because the garden was also enclosed, the darkened trees and bushes tricked your mind into thinking it was



Under wraps: Day transformed into night at No 8

midnight at 8am.

The scene being shot was meant to be set in June, which, given the October leaf fall from Fieldend's huge trees, posed quite a challenge for the crew. The dreaded leaf blowers (ironically, apparently, one of the stars, Cate Blanchett's, most hated devices!) were brought out in force to rid the area of autumn colours.

Just one camera was being used, so scenes needed to be played again and again to shoot from different perspectives. I was lucky enough to watch a key scene from the director's booth, with headphones to hear what was happening and a large screen to see what the camera captured.

Genuinely fascinating stuff.

No 17 was used for the scene where Cate enters the house, and No 8 was used for the downstairs scenes; the upstairs was actually built in a studio.

The last day was a whirlwind; everything was back to normal in record time. They were meticulous; everything went back in the right place, even the books were in the same order on the shelves. The only casualty? The new grass out front was well trampled and is looking like its old patchy self again.

Several crew members commented on what a fantastic community Fieldend is, and how welcoming we were. Well done Fieldend!

A BRIEF HISTORY OF FIELDEND ON SCREEN

Marion tells us the first film crew to come to Fieldend were making a commercial for Startrite shoes, and had a whole row of children lined up on the wall behind her house. That film has long vanished, but several productions have been shot here in the past few years...



November 2015 – Black Mirror

An episode of Charlie Brooker's dystopian drama called *Shut Up and Dance* – which starred Jerome Flynn – was filmed in Fieldend and is on Netflix.



July 2021 – Rogue Agent

Starring James Norton and Gemma Atherton, was shot in number 20. Also available to watch on Netflix.

September 2023 – Joy

Starring Thomasin McKenzie, along with James Norton and Bill Nighy. Shot in number 1. Also available on Netflix.

May 2025 – Alice and Steve

Starring Nicola Walker, was shot in number 44 and around Red Square. Not yet released, but will be shown on Disney+

October 2025 – Sweetsick

Starring Cate Blanchett. Shot in number 8 and outside number 17. Not yet released.

Eric Lyons' original planting plan discovered

We all know what the Fieldend gardens look like today, but what did they look like sixty-five years ago? We can now answer that with confidence, following the recent discovery of Eric Lyons' planting plan from 1960.

The original planting favoured by Lyons and Cunningham was an informal and natural landscape of wooded parkland. Michael Brown's scheme was for rows of plane trees – fifteen around the east square, and twenty for the entrance square (later known as Red Square and now simply the car park). Other planting included groves of silver birch, and a small amount of ground cover in front of each house. The intention was eventually to remove the silver birches, leaving the plane trees to form a London-style square, but in reality the plane trees proved to be overwhelming, many were removed

and the silver birches remained.

A comparison between the early plans and today's landscaping shows a gradual transition from the style of a London square to shrub planting, using both evergreen and deciduous shrubs to divide the communal areas and offer privacy to residents.

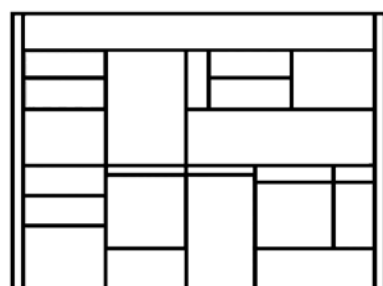
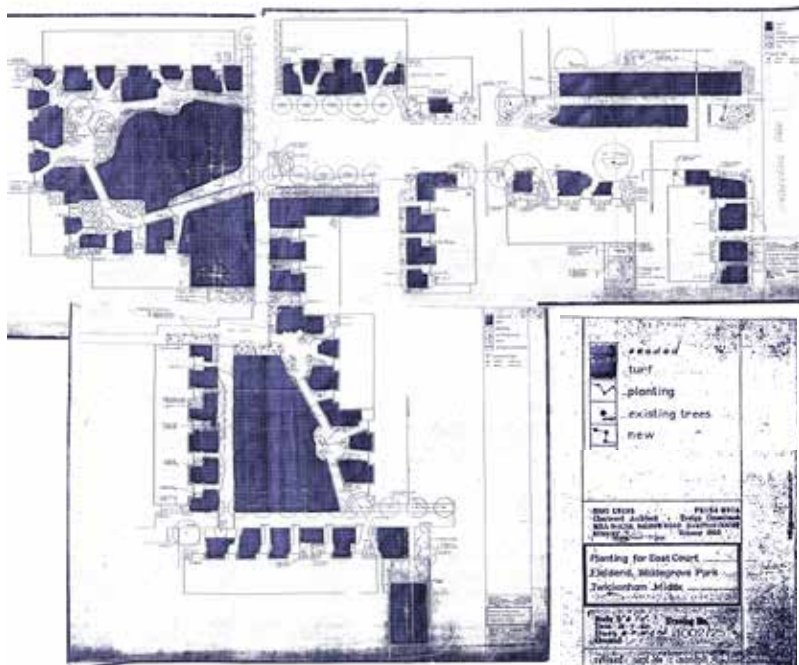
A reflection of the value of the grounds led to them being added in 2020 to the register of Parks and Gardens of Special Historic Interest. We are now duty bound to preserve this landscape, so as trees die they are replaced. As mature shrubs die they too are being replaced, though sometimes with different plants which will cope in today's changing climate.

Thanks to Roy Dietz for finding the planting plan, which has now been scanned into our archive, and is available to anyone who wishes to see it.



Feeling festive?

Every year Fieldenders take part in our festive window advent calendar display. There's still a few slots left untaken so speak to Mira at number 9 if you want to get your house on the list.



FRAL

FIELDEND RESIDENTS
ASSOCIATION LIMITED

Email contact for the Board: FRALBusiness@outlook.com

If you haven't been getting FRAL emails, let us know – we may need to update our address list

Chair & Maintenance
Theo Williams

Secretary
Judith Palmer

Newsletter editor
Elizabeth Blunt

Finance Director
Lesley Alexander

Treasurer
Lesley Alexander

Gardens
Sally Stones

Conservation and Planning
Tim Bystedt
Zoe Fudge

Newsletter design
Chris Barker

Fieldend book photography
Kilian O'Sullivan