

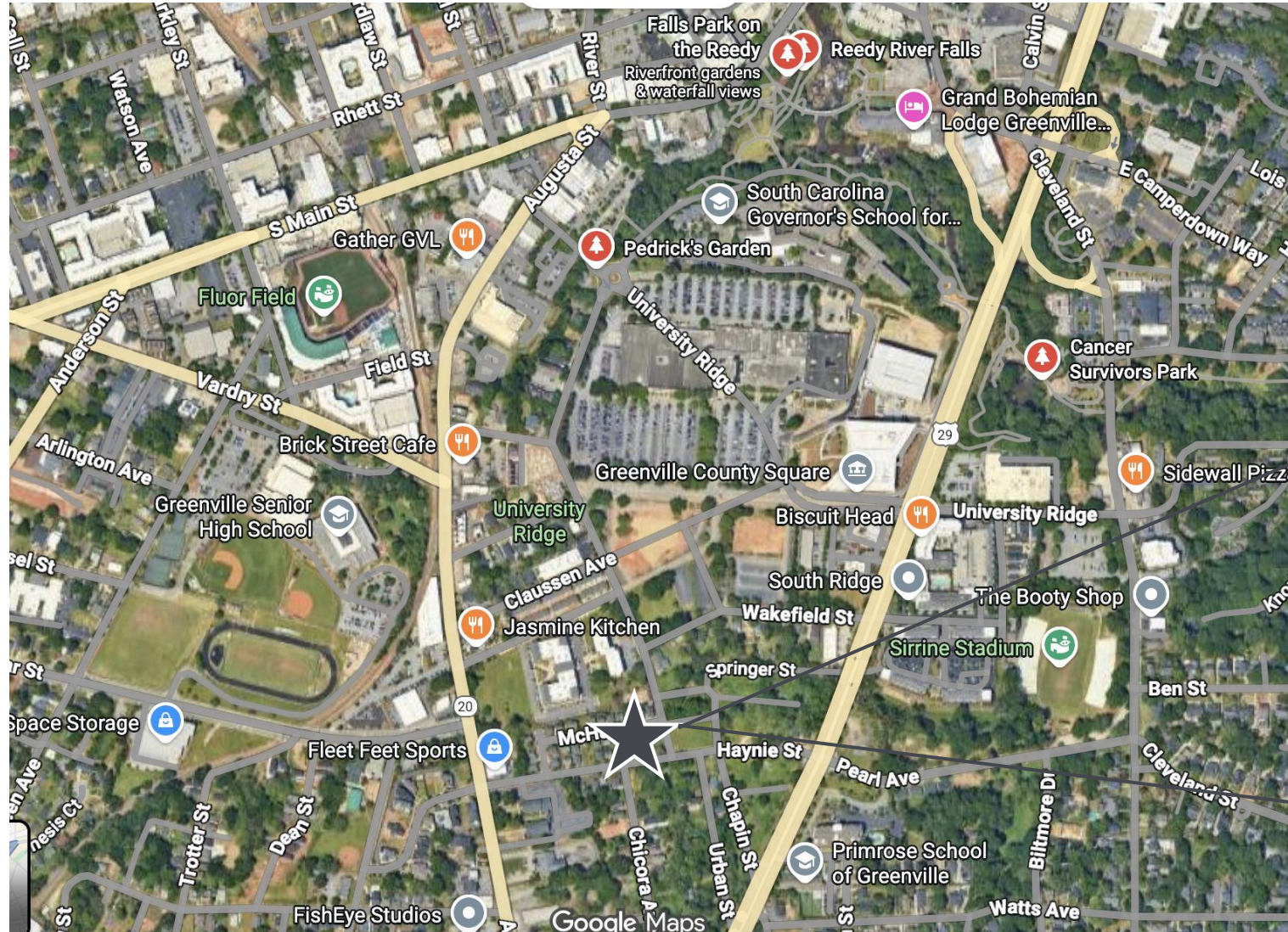
THE ENCLAVE

Community Kit • May 2026

Location

105 Howe Street, Greenville, SC

THE ENCLAVE



Community

THE ENCLAVE

The Enclave is located at 105 Howe Street in Downtown Greenville, a city known for its vibrant atmosphere, historic charm, and diverse amenities. The Enclave is situated in a residential area, with convenient access to Main Street as well as the best of restaurants, shops, businesses, parks, and cultural attractions. Howe Street is known for tree-lined sidewalks and nearby community amenities, including:

- **Downtown Greenville:** A short walk east leads to the heart of Greenville's historic downtown, home to boutiques, coffee shops, restaurants, art galleries, and numerous festivals throughout the year.
- **Falls Park on the Reedy River:** Just northeast, find one of Greenville's greatest attractions and home to walking trails, picnic areas, a sprawling waterfall, Liberty Bridge, and access to the Swamp Rabbit Trail.
- **Greenville Farmers Market:** Open seasonally, this market features fresh produce, crafts, and live music.
- **University Ridge:** An up-and-coming vibrant, walkable mixed-use hub of retail, restaurants, offices, homes, and public spaces that aims to extend downtown's energy and bring highly desirable attractions to the area.

Point of Interest	Distance from The Enclave
Greenville County Square	0.2 miles north
University Ridge	0.2 miles north
Augusta Street	0.2 miles west
Greenville Farmers Market	0.4 miles northwest
Fluor Field	0.6 miles northeast
Falls Park on the Reedy River	0.7 miles northeast
Unity Park	1.3 miles

Exterior Design

THE ENCLAVE



Features

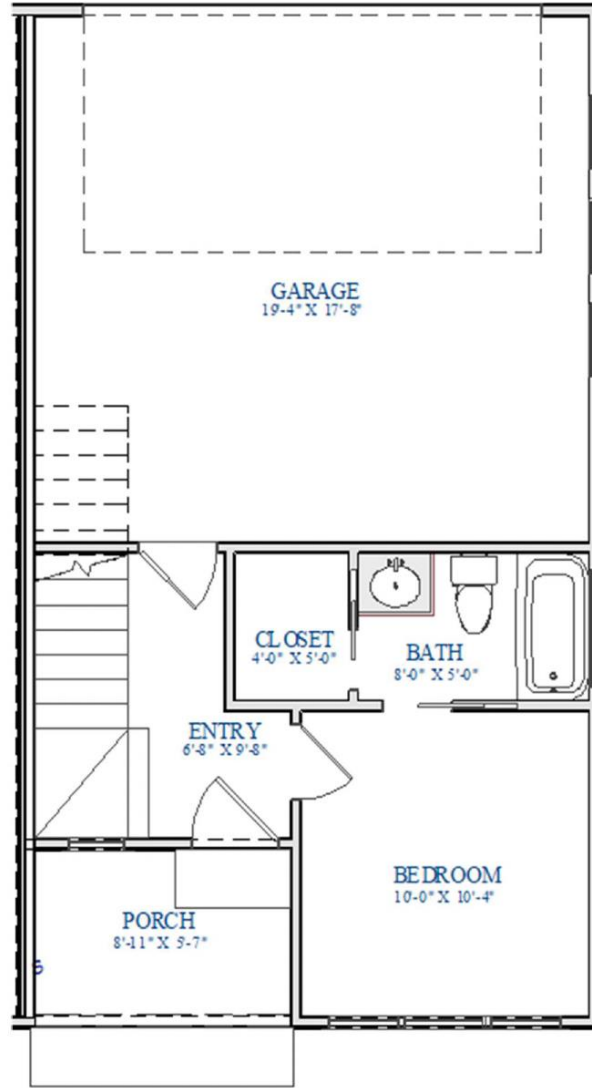
- Approximately 1,800 square feet
- 3 bedrooms, 3.5 baths
- Covered front porch
- Open air rooftop entertainment deck
- Full size two car garage
- Hardwoods throughout
- Chef's kitchen including gas cook top, all appliances, and hood
- Granite countertops and stainless steel appliances
- Full size washer and dryer
- Tankless water heater
- Electric vehicle ready
- Walkable to Downtown Greenville's top attractions
- Steps from the Swamp Rabbit Trail

THE
ENCLAVE



Floorplan:
Type A

THE
ENCLAVE



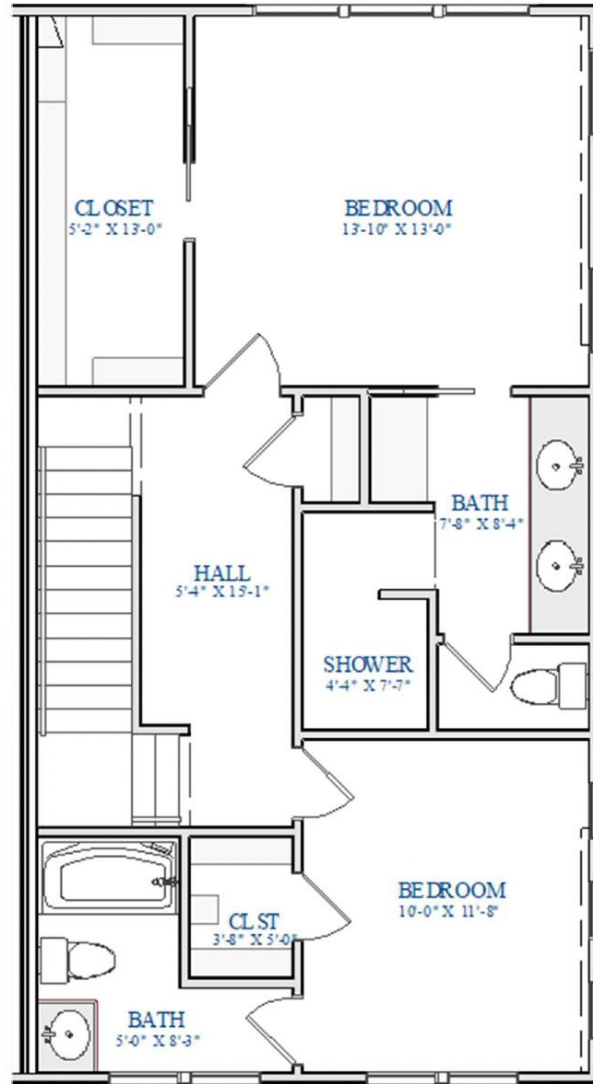
1st Floor



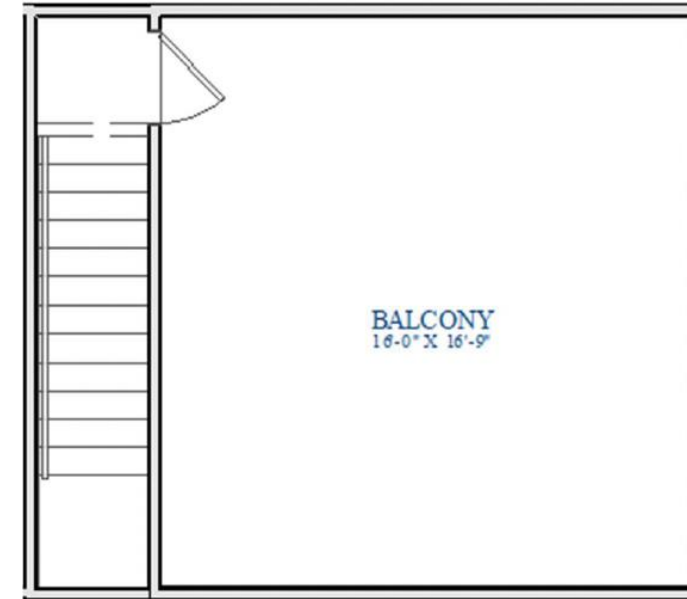
2nd Floor

Floorplan:
Type A

THE
ENCLAVE



3rd Floor



Rooftop Terrace

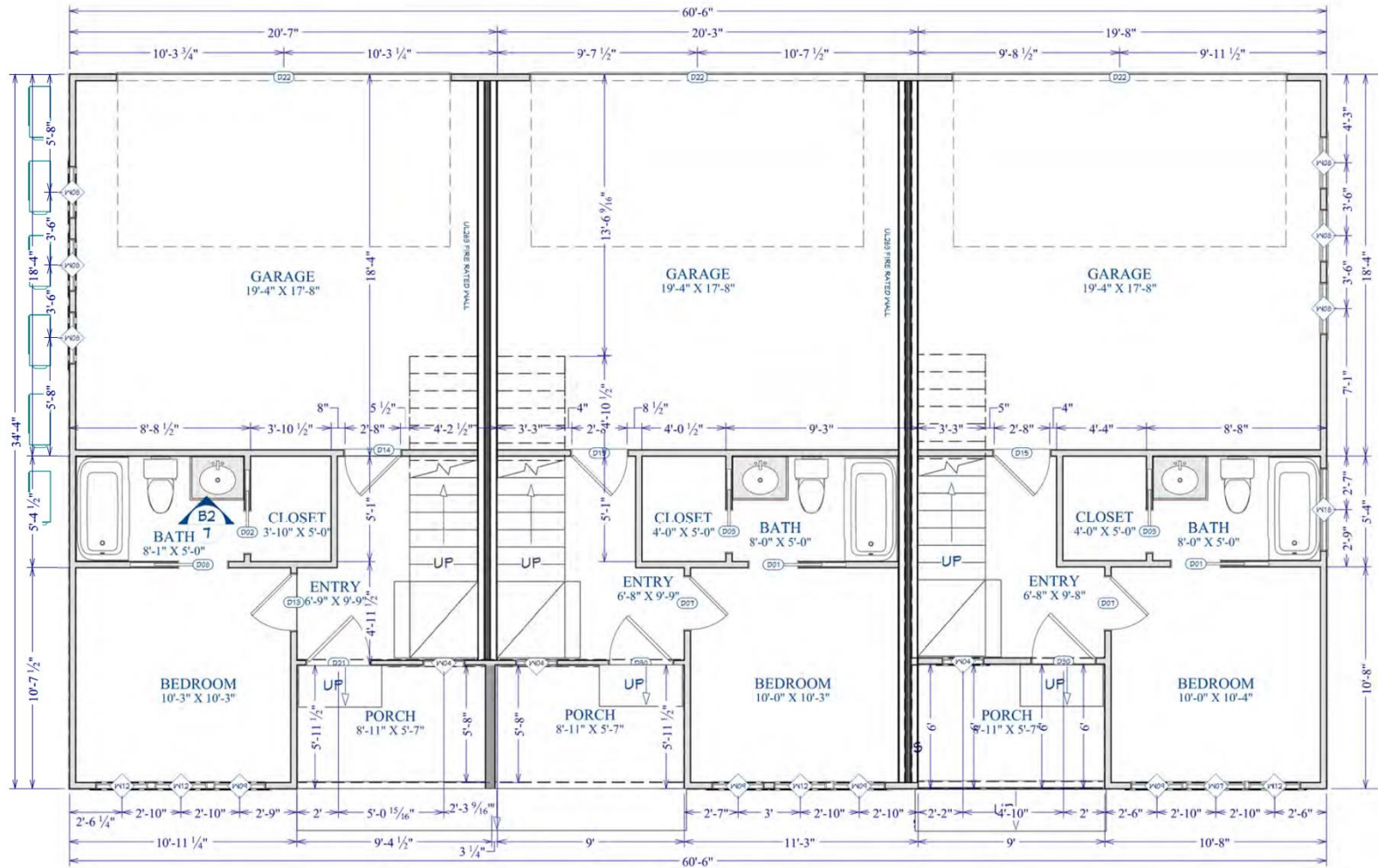
Exterior Design

THE ENCLAVE



Floorplan:
Building 1-3

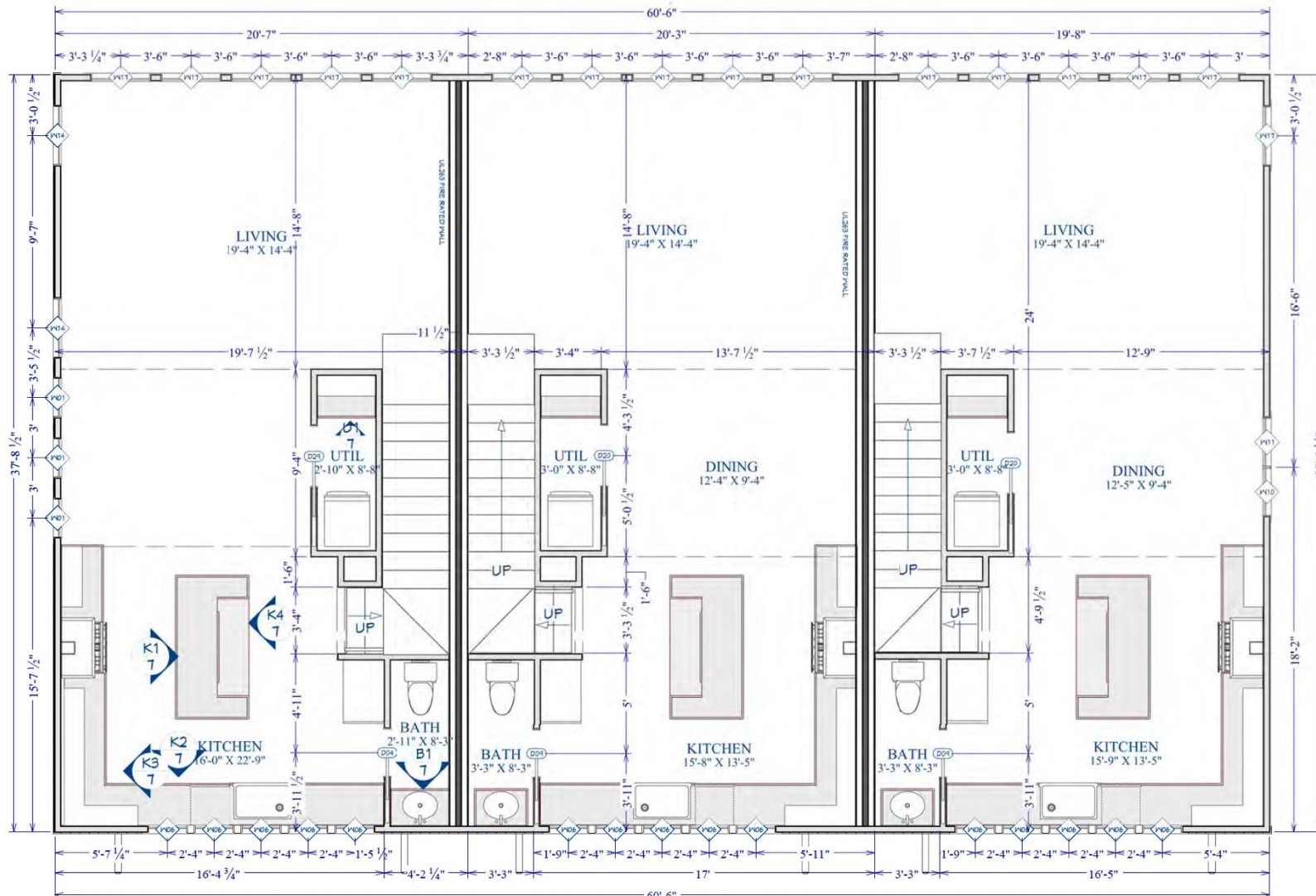
THE
ENCLAVE



1st Floor

Floorplan:
Building 1-3

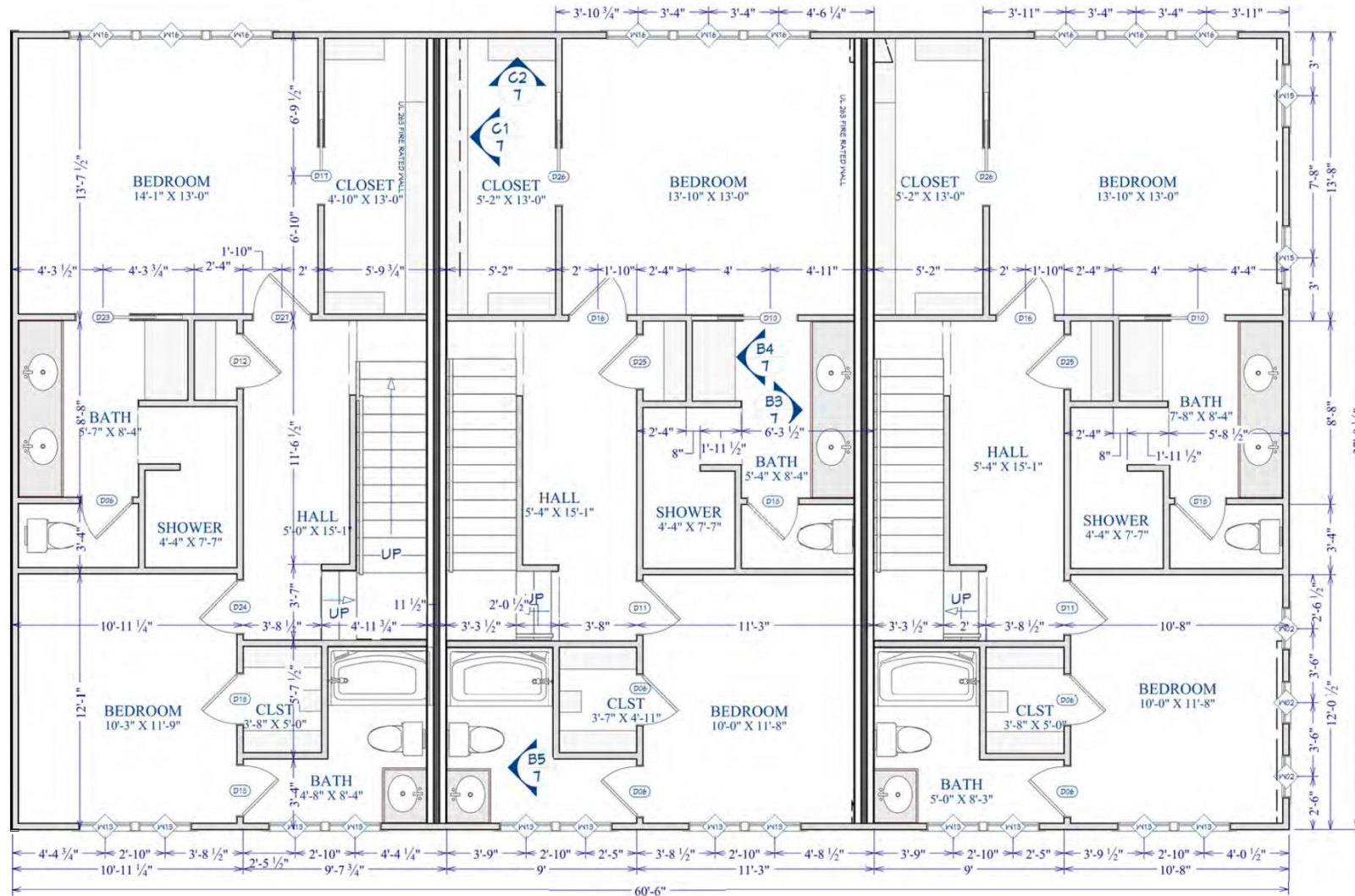
THE
ENCLAVE



2nd Floor

Floorplan:
Building 1-3

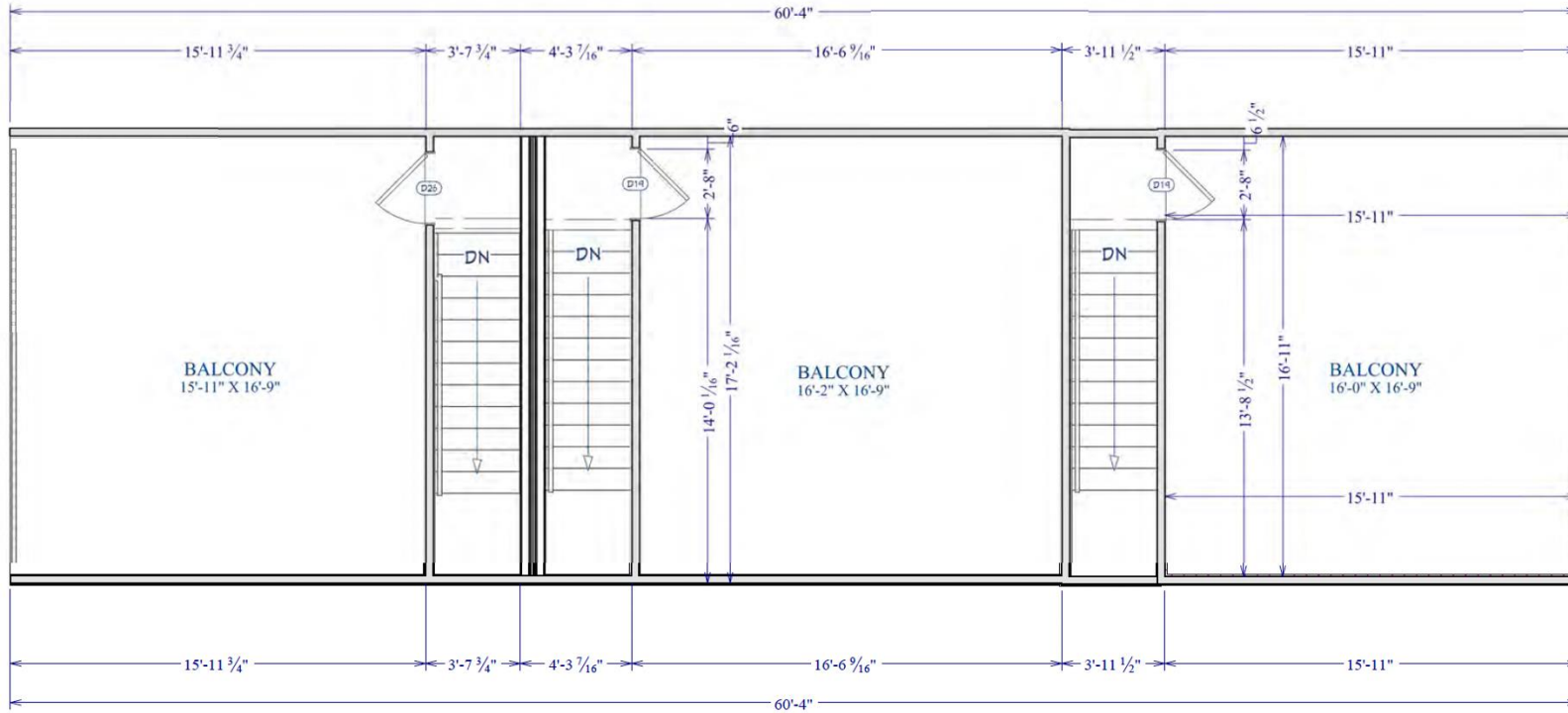
THE
ENCLAVE



3rd Floor

Floorplan:
Building 1-3

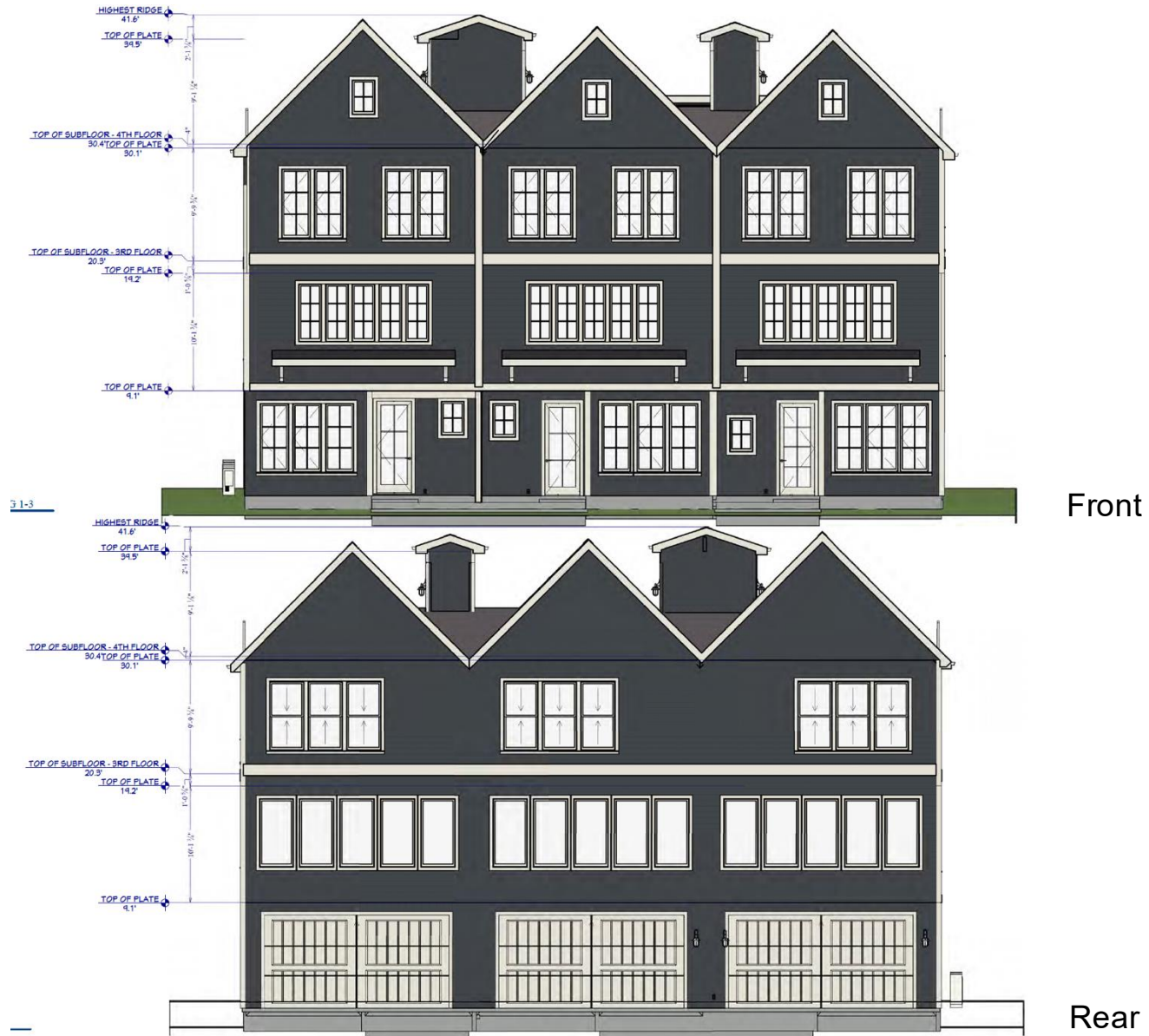
THE
ENCLAVE



Rooftop Terrace

Elevation:
Building 1-3

THE
ENCLAVE



Elevation:
Building 1-3

THE
ENCLAVE



Community Inspiration



THE ENCLAVE



THE ENCLAVE

Now Pre-Selling

info@theenclavegvl.com