

Cab **CAM**TM



www.theCabCAM.com

Available at your local A&I Products Reseller

CabCAMTM HD

A-HD7M1C 7" CabCAMTM HD Touch Screen Camera System

High definition video in a popular package!

(1) HD Weatherproof Color Camera

- Infrared Illuminators allow up to 32 feet of night visibility
- Image mirroring capability
- Designed to handle off-road conditions
- Audio capability

7" HD Color Touch Screen Monitor

- 4 Camera capability
- Audio speaker
- Remote control
- 22 Pin wire harness



Accessories

- Ball Swivel Mounting Bracket with Mounting Pad
- Stationary Mounting Bracket with Thumb Screws
- Sunshield
- Hard Wire Power Adapter
- 65' Weatherproof Video Cable
- 20' Weatherproof Video Cable

? Hard Wire Adapter

If you ever need to move your CabCAMTM system to another piece of equipment, this adapter makes it simple. No wires to cut. With an adapter in your other machine, it is simply plug-and-play.



A-HD7M2CQ 7" Quad CabCAMTM HD Touch Screen Camera System

Four times the HD views!

(2) HD Weatherproof Color Cameras

- Infrared Illuminators allow up to 32 feet of night visibility
- Image mirroring capability
- Designed to handle off-road conditions
- Audio capability

7" HD Color Touch Screen Monitor

- Quad Display
- 4 Camera capability
- Audio speaker
- Remote control
- 24 Pin wire harness



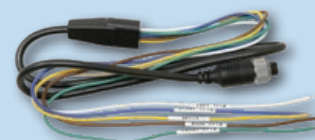
Accessories

- Ball Swivel Mounting Bracket with Mounting Pad
- Stationary Mounting Bracket with Thumb Screws
- Sunshield
- Hard Wire Power Adapter
- (2) 20' Weatherproof Video Cables
- Camera Trigger Wire Harness



? Trigger Wire Harness

A trigger wire harness automatically changes your camera view by wiring to a power signal that exists in your machine. Compatible with HD Quad monitors.



A-HD10M1C 10" CabCAMTM HD Touch Screen Camera System

A better view with a bigger screen!

(1) HD Weatherproof Color Camera

- Infrared Illuminators allow up to 32 feet of night visibility
- Image mirroring capability
- Designed to handle off-road conditions
- Audio capability

10" HD Color Touch Screen Monitor

- 4 Camera capability
- Audio speaker
- Remote control
- 22 Pin wire harness



Accessories

- Ball Swivel Mounting Bracket with Mounting Pad
- Stationary Mounting Bracket with Thumb Screws
- Sunshield
- Hard Wire Power Adapter
- 65' Weatherproof Video Cable
- 20' Weatherproof Video Cable

? Illuminators

Infrared illuminators can see in the dark and provide visibility when otherwise impossible without added lighting. For applications where standard illumination is best, see page 9, 12, and 26 for info on white light LED cameras and systems.



A-HD10M2CQ 10" Quad CabCAMTM HD Touch Screen Camera System

Four times the HD views!

(2) HD Weatherproof Color Cameras

- Infrared Illuminators allow up to 32 feet of night visibility
- Image mirroring capability
- Designed to handle off-road conditions
- Audio capability

10" HD Color Touch Screen Monitor

- Quad Display
- 4 Camera capability
- Audio speaker
- Remote control
- 24 Pin wire harness



Accessories

- Ball Swivel Mounting Bracket with Mounting Pad
- Stationary Mounting Bracket with Thumb Screws
- Sunshield
- Hard Wire Power Adapter
- (2) 20' Weatherproof Video Cables
- Camera Trigger Wire Harness



? Quad Display

The Quad CabCAMTM displays offer multiple viewing options. You can choose from full screen single cam and six different split screen configurations



CabCAMTM HD

A-HD7M 7" HD Color Touch Screen Color Monitor

- For use with wired HD CabCAMTM systems
- Embedded control box for direct power input for cameras
- Four camera capability
- Audio speaker
- Ball Swivel Mounting Bracket, Stationary Mount with Thumb Screws
- Power supply cable, Remote control, sunshield
- 12V-24V



A-HD7QM 7" HD Color Touch Screen Quad Monitor

- For use with wired HD CabCAMTM systems
- Able to show 1, 2, 3, or 4 camera views at one time
- Four camera capability
- Audio speaker
- Ball Swivel Mounting Bracket, Stationary Mount with Thumb Screws
- Power supply cable, Remote control, sunshield
- 12V-24V



A-HD10M 10" HD Color Touch Screen Color Monitor

- For use with wired HD CabCAMTM systems
- Embedded control box for direct power input for cameras
- Four camera capability
- Audio speaker
- Ball Swivel Mounting Bracket, Stationary Mount with Thumb Screws
- Power supply cable, Remote control, sunshield
- 12V-24V



A-HD10QM 10" HD Color Touch Screen Quad Monitor

- For use with wired HD CabCAMTM systems
- Able to show 1, 2, 3, or 4 camera views at one time
- Four camera capability
- Audio speaker
- Ball Swivel Mounting Bracket, Stationary Mount with Thumb Screws
- Power supply cable, Remote control, sunshield
- 12V-24V



All HD monitors require HD cameras to display in HD resolution.
Non-HD cameras are compatible, but will display in standard definition.

A-HD1080C **110° Color Camera**

- For use with wired HD CabCAM™ systems ONLY
- Not compatible with non-HD CabCAM™ systems or GPS monitors
- Infrared illuminators allow up to 32' of night visibility
- Weatherproof and constructed to withstand off-road conditions
- Audio capabilities



A-HD6164BK **7" HD Monitor Bracket Kit**

- For use with A-HD7M & A-HD7QM HD monitors
- U-support bracket with threaded mounting knobs
- Ball swivel bracket with stick pad
- Sunshield



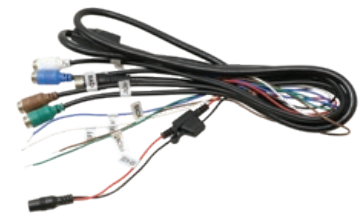
A-HD9195BK **10" HD Monitor Bracket Kit**

- For use with A-HD10M & A-HD10QM HD monitors
- U-support bracket with threaded mounting knobs
- Ball swivel bracket with stick pad
- Sunshield



A-HD22P **22 Pin Wire Harness**

- For use with wired single view HD CabCAM™
- 22 pin harness
- DC adapter
- Fuse



A-HD24PQ **24 Pin Wire Harness**

- For use with wired quad view HD CabCAM™
- 24 pin harness
- DC adapter
- Fuse



A-HDRM **Remote Control**

- For use with HD CabCAM™ systems



Wired HD CabCAM™ systems are compatible with most wired CabCAM™ accessories.

See the complete listing of Wired accessories on pages 10 & 11.

A-CC7M1C 7" CabCAM™ Camera Observation System

The original system. unlimited applications!

(1) Weatherproof Color Camera

- Infrared Illuminators allow up to 32 feet of night visibility
- Image mirroring capability
- Designed to handle off-road conditions
- Audio capability

7" Color Monitor

- 3 Camera capability
- Audio speaker
- Remote control
- 13 Pin wire harness
- A/V Input



Accessories

- Ball Swivel Mounting Bracket with Mounting Pad
- Stationary Mounting Bracket with Thumb Screws
- Flush Mount Bracket
- Sunshield
- A/V Input Cable
- Automotive Power Adapter
- A/C Power Adapter
- Hard Wire Power Adapter
- 20' Weatherproof Video Cable
- 65' Weatherproof Video Cable

? The Original

A-CC7M1C first came to the market in 2007. It was designed as an affordable camera observation system for use with Ag equipment. It soon was realized that the applications for CabCAM™ are endless.



A-CTB7M1C 7" Touch Button CabCAM™ Camera Observation System

Easy to use. easy to clean!

(1) Weatherproof Color Camera

- Infrared Illuminators allow up to 32 feet of night visibility
- Image mirroring capability
- Designed to handle off-road conditions
- Audio capability

7" Color Touch Button Monitor

- 4 Camera capability
- Audio speaker
- Remote control
- 22 Pin wire harness
- A/V Output



Accessories

- Ball Swivel Mounting Bracket with Mounting Pad
- Stationary Mounting Bracket with Thumb Screws
- Sunshield
- Automotive Power Adapter
- A/C Power Adapter
- Hard Wire Power Adapter
- 20' Weatherproof Video Cable
- 65' Weatherproof Video Cable

A-CWT7M1C 7" Weatherproof Touch Button CabCAM™ Camera Observation System

Great for open station equipment!

(1) Weatherproof Color Camera

- Infrared Illuminators allow up to 32 feet of night visibility
- Image mirroring capability
- Designed to handle off-road conditions
- Audio capability

7" Weatherproof Color Touch Button Monitor

- Sealed construction, made to withstand the elements.
- 4 Camera capability
- Audio speaker
- Remote control
- 22 Pin wire harness
- A/V Output



Accessories

- Ball Swivel Mounting Bracket with Mounting Pad
- Stationary Mounting Bracket with Thumb Screws
- Sunshield
- Automotive Power Adapter
- A/C Power Adapter
- Hard Wire Power Adapter
- 20' Weatherproof Video Cable
- 65' Weatherproof Video Cable

Although this monitor is weatherproof, in cases where the system is not being used & is out in the elements for an extended period of time, the monitor should be removed & stored in a safe place.

A-CC7M2CQR 7" Quad CabCAM™ Camera Observation System

Keep everything within a glance!

(2) Weatherproof Color Cameras

- Infrared Illuminators allow up to 32 feet of night visibility
- Image mirroring capability
- Designed to handle off-road conditions
- Audio capability

7" Color Touch Screen Quad Monitor

- Quad Display
- 4 Camera capability
- Audio speaker
- Remote control
- 22 Pin wire harness
- A/V Input
- A/V Output



Accessories

- Ball Swivel Mounting Bracket with Mounting Pad
- Stationary Mounting Bracket with Thumb Screws
- Sunshield
- A/V Input Cable
- Automotive Power Adapter
- Hard Wire Power Adapter
- (2) 20' Weatherproof Video Cables



A-CTB9M1C 9" Touch Button CabCAM™ Camera Observation System

Large screen display for visibility.

(1) Weatherproof Color Camera

- Infrared Illuminators allow up to 32 feet of night visibility
- Image mirroring capability
- Designed to handle off-road conditions
- Audio capability

9" Touch Button Monitor

- 4 Camera capability
- Audio speaker
- Remote control
- 22 Pin wire harness
- A/V Output



Accessories

- Ball Swivel Mounting Bracket with Mounting Pad
- Stationary Mounting Bracket with Thumb Screws
- Sunshield
- Automotive Power Adapter
- A/C Power Adapter
- Hard Wire Power Adapter
- 20' Weatherproof Video Cable
- 65' Weatherproof Video Cable

A-CCT9M2CQ 9" Quad CabCAM™ Camera Observation System

Maximize your visibility and safety!

(2) Weatherproof Color Cameras

- Infrared Illuminators allow up to 32 feet of night visibility
- Image mirroring capability
- Designed to handle off-road conditions
- Audio capability

9" Touch Screen Monitor

- Quad Display
- 4 Camera capability
- Audio speaker
- Remote control
- 22 Pin wire harness
- AV Output



Accessories

- Ball Swivel Mounting Bracket with Mounting Pad
- Stationary Mounting Bracket with Thumb Screws
- Sunshield
- Automotive Power Adapter
- Hard Wire Power Adapter
- (2) 20' Weatherproof Video Cables



AV Input & Output

Some systems offer AV Input allowing the monitor to be connected to a DVD player or other media device. Some systems offer AV Output. This allows a connection to a larger monitor or TV, or connection to a recording device.



A-CC35M1C 3.5" CabCAM™ Camera Observation System

Our most economical monitoring system!

(1) 150° Weatherproof License Plate Color Camera

- Infrared Illuminators allow up to 9 feet of night visibility
- Image mirroring capability
- Designed to handle off-road conditions
- Audio capability
- Slotted mounting holes adjust from 6 5/8" - 7 1/4"

3.5" Color Touch Screen Monitor

- 2 Camera capability
- Audio speaker
- A/V Input



? 150° Camera

The 150° License Plate Camera offers a wider view over the standard 110° CabCAM™ Camera. For more information, review all the cameras available on pages 12 & 13.



Accessories

- Adjustable Mounting Bracket
- Anti-vibration pad
- Sunshield
- Automotive Power Adapter
- Hard Wire Power Adapter
- 20' Weatherproof Video Cable

Solutions for Air Seeder Applications

White LED Illuminators work more effectively in air seeder tanks than infrared due to dust and debris and reflection. We have solutions that make it easy to see in your tank!

A-CWL7M1C

- The same kit as A-CC7M1C but w/ a white LED camera

A-CWL7M2CQ

- The same kit as A-CC7M2CQR but w/ white LED cameras

A-CWL9M2CQ

- The same kit as A-CCT9M2CQ but w/ white LED cameras

A-CWP340 CabCAM™ Wall Plug See page 11

A-TCK44 Implement Cable Kit See page 11



A-CWP340



CabCAM™

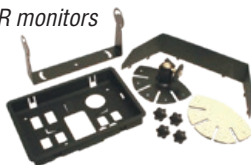
A-BRK35 3.5" Monitor Bracket

- For use with A-CC35DTS monitors
- Ball swivel bracket with stick pad



A-BRK7M 7" Monitor Bracket Kit

- For use with A-VS7M13PIN & A-QM7127R monitors
- U-support bracket with threaded mounting knobs
- Ball swivel bracket with stick pad
- Flush mount bracket
- Sunshield



A-TB121BK 7" Touch Button Monitor Bracket Kit

- For use with A-TM7121 Touch Button monitors
- U-support bracket with threaded mounting knobs
- Ball swivel bracket with stick pad
- Sunshield



A-WM125BK 7" Weatherproof Touch Button Monitor Bracket Kit

- For use with A-WTM125 Touch Button monitors
- U-support bracket with threaded mounting knobs
- Ball swivel bracket with stick pad
- Sunshield



A-HD6164BK 7" HD Monitor Bracket Kit

- For use with A-HD7M & A-HD7QM HD monitors
- U-support bracket with threaded mounting knobs
- Ball swivel bracket with stick pad
- Sunshield



HD

A-BRK9M 9" Monitor Bracket Kit

- For use with A-TM9138 & A-QM9146 Touch Button monitors
- U-support bracket with threaded mounting knobs
- Ball swivel bracket with stick pad
- Sunshield



A-HD9195BK 10" HD Monitor Bracket Kit

- For use with A-HD10M & A-HD10QM HD monitors
- U-support bracket with threaded mounting knobs
- Ball swivel bracket with stick pad
- Sunshield



HD

A-BRK540 Monitor Bracket

- 360° horizontal rotation angle
- 90° side rotation angle
- Made of aluminum alloy
- Compatible with all CabCAM™ LCD monitors with metal mount slot.
- Mounting hardware not included



A-DCW1 DC Adapter Wire

- For use with CabCAM™ systems
- 3' long
- (5) pack



A-AD35 3.5 Amp AC Adapter

- For use with wired Quad CabCAM™ systems



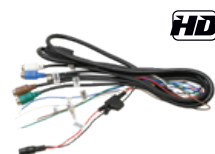
A-HNS13P 13 Pin Wire Harness

- For use with wired CabCAM™ systems
- 13 pin harness
- Jack for AC/automotive/DC adapter
- Fuse



A-HD22P 22 Pin Wire Harness

- For use with wired single view HD CabCAM™
- 22 pin harness
- DC adapter
- Fuse



HD

A-HD24PQ 24 Pin Wire Harness

- For use with wired quad view HD CabCAM™
- 24 pin harness
- DC adapter
- Fuse



HD

A-HNS22P 22 Pin Quad Wire Harness

- For use with wired Quad CabCAM™ systems using A-CAM87 cameras
- 22 pin harness
- Jack for AC/automotive/DC adapter
- Fuse



A-HNS22PR 22 Pin Quad Wire Harness

- For use with wired Quad CabCAM™ systems
- 22 pin harness
- Jack for AC/automotive/DC adapter
- Fuse



A-TB22PH 22 Pin Touch Button Wire Harness

- For use with wired TouchButton CabCAM™ systems
- 22 pin harness
- Fuse



A-HD346TW Trigger Wire

- For use with wired HD Quad CabCAM™ systems
- For automatic camera changes



HD

A-PVAKIT Power/Video Kit

- For use with CabCAM™ systems
- 2000 mA AC adapter
- Automotive power adapter
- AV conversion cable



A-HDRM Remote Control

- For use with HD CabCAM™ systems



HD

Power Video Cables

- For use with wired CabCAM™ systems
- Used to connect camera to monitor
- Weatherproof

A-PVC6 Power Video Cable, 6'

- 6' long



A-PVC10 Power Video Cable, 10'

- 10' long



A-PVC20 Power Video Cable, 20'

- 20' long



A-PVC30 Power Video Cable, 30'

- 30' long



A-PVC40 Power Video Cable, 40'

- 40' long



A-PVC50 Power Video Cable, 50'

- 50' long



A-PVC65 Power Video Cable, 65'

- 65' long



A-PVC200 Power Video Cable, 200'

- 200' long



A-CAP2 Power Video Cable Cap Plug

- For use with CabCAM™ camera cables
- Used to keep weather & dirt out of connection ends when not in use.
- Pair of (2) plugs; (1) male, (1) female



A-RCACABLE RCA Cable

- For use with wired CabCAM™ systems
- 4 Pin Male/RCA Male/Power
- Jack for AC adapter/automotive power adapter to power camera
- Allows one camera to be hooked up to a TV/DVD/VCR or other recording device that has female RCA jacks



A-CWP340 CabCAM™ Wall Plug

- For use with wired CabCAM™ systems
- Ideal for plastic & metal air seeder tanks
- O-ring provides an airtight seal
- Requires drilling a 1" hole



A-SW932 CabCAM™ Switchbox

- For use with wired CabCAM™ systems
- Connect four cameras to one camera port 9-32Volt
- Push buttons on control box to select camera



A-TCK523 Trailer Cable Kit

- For use with wired CabCAM™ systems
- 7 pin
- Aluminum connectors
- 2 camera capability
- 3.25' in original state, 14' when stretched
- Receptacles come with 2 short pigtails for monitor and camera hookup



A-CC523 Trailer Coiled Cable

- For use with wired CabCAM™ systems
- 7 pin
- Aluminum connectors
- 3.25' in original state, 14' when stretched
- Component of A-TCK523 Trailer Cable Kit



A-TR5237 Camera End Plug

- For use with wired CabCAM™ systems
- 7 pin
- Aluminum connectors
- 2 camera capability
- 16" long
- Component of A-TCK523 Trailer Cable Kit



A-TP7523 Monitor End Plug

- For use with wired CabCAM™ systems
- 7 pin
- Aluminum connectors
- 2 camera capability
- 16" long
- Component of A-TCK523 Trailer Cable Kit



A-TCK44 Implement Cable Kit

- For use with wired CabCAM™ systems
- Can be used on any application, designed for easy installation on air seeders.
- Four camera capability
- Includes: 32' tractor cable with up to 4-way connection to monitor, 32' intermediate extension cable, & short 4-way camera cable



A-C104M Monitor End, 4-Way Cable

- For use with wired CabCAM™ systems
- 4-way camera cable connects to monitor harness and outputs to 7 pin plug
- Weatherproof
- 32' long
- Component of A-TCK44 Implement Cable Kit



A-C4SPL Camera End, Short 4-Way

- For use with wired CabCAM™ systems
- 7 pin plug connects to 4-way camera cable for camera hook up
- Weatherproof
- 46" long
- Component of A-TCK44 Implement Cable Kit



A-C10CE Cable Extension, 32'

- For use with wired CabCAM™ systems
- Great for quick and easy hookup on implements
- 7 pin extension cable for A-C104M & C4SPL
- Weatherproof
- 32' long
- Component of A-TCK44 Implement Cable Kit



A-VS1C110 110° Color Camera

- For use with wired CabCAM™ systems & NTSC format GPS monitors
- Infrared illuminators allow up to 32' of night visibility
- Weatherproof and constructed to withstand off-road conditions
- Audio capabilities

A-HD1080C 110° Color Camera

- For use with wired HD CabCAM™ systems ONLY
- Not compatible with non-HD CabCAM™ systems or GPS monitors
- Infrared illuminators allow up to 32' of night visibility
- Weatherproof and constructed to withstand off-road conditions
- Audio capabilities

A-PAL110C PAL Format 110° Color Camera

- For use with PAL format GPS monitors only
- Infrared illuminators allow up to 32' of night visibility
- Weatherproof and constructed to withstand off-road conditions
- Audio capabilities

A-VS1CWL 110° LED Color Camera

- For use with wired CabCAM™ systems & NTSC format GPS monitors
- White LED illuminators for better visibility and color quality up to 32'
- Weatherproof and constructed to withstand off-road conditions
- Audio capabilities
- Use in air-seeder tanks and other dark areas

A-MC110S 110° Color Camera

- For use with John Deere S Series Combines & OEM monitor, 5-pin connector
- Direct plug & play with OEM harness, Includes bolt pattern for OEM mount w/hardware
- Infrared illuminators allow up to 32' of night visibility
- Weatherproof and constructed to withstand off-road conditions
- Audio capabilities

A-CAM87 110° Color Camera

- For use with wired CabCAM™ systems & NTSC format GPS monitors
- Infrared illuminators allow up to 16' of night visibility
- Weatherproof and constructed to withstand off-road conditions
- Audio capabilities

A-ASC635M 110° Auto Shutter Color Camera

- For use with wired CabCAM™ systems & NTSC format GPS monitors
- Shutter is closed when not in use to keep lens free from debris
- Weatherproof and constructed to withstand off-road conditions
- Infrared illuminators allow up to 32' of night visibility
- Auto heating when temperature is below 50° F or 10° C
- Audio capabilities
- Camera must be powered by a constant secondary 12V source due to power consumption required by the shutter function
- 10' DC adapter wire included



A-SVC402 90° Color Camera

- For use with wired CabCAM™ systems & NTSC format GPS monitors
- Contoured housing designed for side mounting, unlimited mounting possibilities
- Infrared illuminators allow up to 16' of night visibility
- Weatherproof and constructed to withstand off-road conditions
- Easy external angle adjustment, no disassembly required
- No Audio



A-LPC634 150° License Plate Camera

- For use with wired CabCAM™ systems & NTSC format GPS monitors
- Infrared illuminators allow up to 9' of night visibility
- Super wide angle (150°)
- Waterproof construction
- Easy to install
- Slotted mounting holes adjust from 6 5/8" - 7 1/4"
- No Audio



A-BC644 110° Ball Swivel Color Camera

- For use with wired CabCAM™ systems & NTSC format GPS monitors
- Weatherproof
- Convenient angle adjustment
- 5 LED infrared illuminators allow 16' of night visibility
- Unlimited mounting capabilities
- 2.25" wide x 1.80 tall x 2.00" deep
- No audio



A-SVC134 110° Compact Side Mount Color Camera

- For use with wired CabCAM™ systems & NTSC format GPS monitors
- Weatherproof
- Convenient angle adjustment
- 5 LED infrared illuminators allow 16' of night visibility
- 2.00" wide x 1.60 tall x 3.56 deep
- No audio



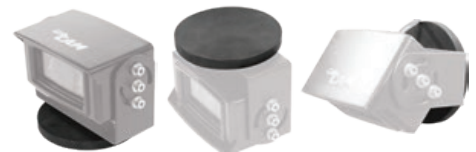
A-WL89CC Flood LED Work Lamp/CabCAM™ Camera Combo

- For use with wired CabCAM™ systems & NTSC format GPS monitors
- Weatherproof
- 3200 Raw Lumens, 2500 Effective Lumens
- Die cast aluminum housing, polycarbonate lens
- 4.75" wide x 4.75 tall x 3.5 deep
- Includes two universal mounting brackets
- No audio



A-MG539 Magnet Camera Mount

- For use with CabCAM™ cameras utilizing the standard U-bracket
- Mount a CabCAM™ camera to any magnetic surface
- Ultra strong
- Rubber coated to protect paint
- 3.22" diameter



A-VS7M13PIN 7" Color Monitor

- For use with wired CabCAM™ systems
- Color LCD screen
- Embedded control box for direct power input for cameras
- AV1, AV2, and AV3 video inputs allow three camera capability
- DVD Input, audio/video input, audio speaker, and power supply terminal
- Support attaching slot
- Power indicator, remote receiving window, POWER, MENU, Brightness, Channel, & AV SHIFT buttons
- 12V-24V



A-QM7127R 7" Color Touch Screen Quad Monitor

- For use with wired CabCAM™ systems
- Able to show 1, 2, 3, or 4 camera views at one time
- Picture-in-picture capability
- Brightness, contrast, color, hue, mirror & upside down functions can be set for each individual camera
- Camera default names are "LEFT," "RIGHT," "FRONT," and "BACK." This function can be turned off or cameras can be renamed up to eight characters long
- Color LCD screen
- Embedded control box for direct power input for cameras
- AV1, AV2, AV3, & AV4 video inputs allow four camera capability
- Audio/video input, audio speaker, and power supply terminal
- Support attaching slot, image mirroring function, and auto back-light sensor
- Power indicator, remote receiving window, POWER, MENU, Volume, Channel, & AV SHIFT buttons
- 12V-24V



A-TM7121 7" Color Touch Button Monitor

- For use with wired CabCAM™ systems
- Color LCD screen
- Embedded control box for direct power input for cameras
- AV1, AV2, AV3, & AV4 video inputs allow four camera capability
- Audio speaker and power supply terminal
- Support attaching slot
- Power indicator, remote receiving window, POWER, MENU, Brightness, Channel, & AV SHIFT buttons
- 12V-24V



A-WTM125 7" Weatherproof Color Touch Button Monitor

- For use with wired CabCAM™ systems
- Perfect for open station applications
- Color LCD screen
- Embedded control box for direct power input for cameras
- AV1, AV2, AV3, & AV4 video inputs allow four camera capability
- Audio speaker and power supply terminal
- Support attaching slot
- Power indicator, remote receiving window, POWER, MENU, Brightness, Channel, & AV SHIFT buttons
- 12V-24V



Although this monitor is weatherproof, in cases where the system is not being used & is out in the elements for an extended period of time, the monitor should be removed & stored in a safe place.

A-TM9138 9" Touch Button Color Monitor

- For use with wired CabCAM™ systems
- Color LCD screen
- Embedded control box for direct power input for cameras
- AV1, AV2, AV3 and AV4 video inputs allow four camera capability
- Audio speaker and power supply terminal
- Support attaching slot
- Power indicator, remote receiving window, POWER, MENU, Brightness, Channel, & AV SHIFT buttons
- 12V-24V



A-QM9146 9" Color Touch Screen Quad Monitor

- For use with wired CabCAM™ systems
- Able to show 1, 2, 3, or 4 camera views at one time
- Picture-in-picture capability
- Brightness, contrast, color, hue, mirror & upside down functions can be set for each individual camera
- Camera default names are "LEFT," "RIGHT," "FRONT," and "BACK." This function can be turned off or cameras can be renamed up to eight characters long
- Color LCD screen
- Embedded control box for direct power input for cameras
- AV1, AV2, AV3, & AV4 video inputs allow four camera capability
- Audio/video input, audio speaker, and power supply terminal
- Support attaching slot, image mirroring function, and auto back-light sensor
- Power indicator, remote receiving window, POWER, MENU, Volume, Channel, & AV SHIFT buttons
- 12V-24V



A-CC35DTS 3.5" Wired Touch Screen Monitor

- For use with wired CabCAM™ systems
- 2 camera inputs
- Includes monitor, harness, sun shade, mount bracket, (1) automotive power adapter, (1) DC power wire



A-WL89CC Flood LED Work Lamp/ CabCAM™ Camera Combo

Add lighting and video capabilities to your equipment simultaneously. The addition of LED lights provides a more illuminated viewing area than infrared with more accurate color reproduction on screen.

- Features hollow mounting stud
- Includes two universal mounting brackets

3200 RAW LUMENS | 2500 EFFECTIVE LUMENS

SEE PAGE 13 FOR MORE INFO





A-WL56M2C Analog WiRELESS CabCAMTM Camera Observation System

200 yard barrier-free transmission range!

(2) Weatherproof Analog Color Cameras

- (1) channel 3 camera, (1) channel 4 camera
- Infrared Illuminators allow up to 32 feet of night visibility
- Image mirroring capability
- Designed to handle off-road conditions
- Audio capability
- Cameras require 12V power source or 24V w/A-AD520 reducer

7" Color Analog Monitor

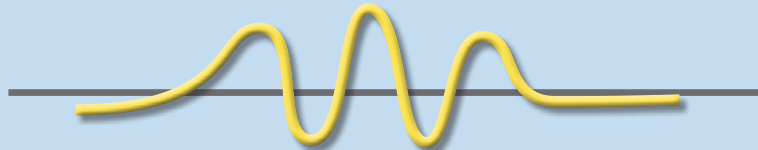
- 4 Camera capability
- Audio speaker
- 6 Pin wire harness
- 2.4GHz analog WiRELESS receiver



Accessories

- Ball Swivel Mounting Bracket with Mounting Pad
- Stationary Mounting Bracket with Thumb Screws
- A/V Input Cable
- Sunshield
- Automotive Power Adapter
- A/C Power Adapter
- (3) Hard Wire Adapters
- Remote Antenna w/9.75 ft Cord

Analog WiRELESS Transmission



Analog WiRELESS is the transmission of audio & video signals using radio frequencies. CabCAMTM items use 2.4GHz frequency. The transmission between the antennas is what is considered WiRELESS. Cameras still need to be connected to a 12 volt power supply.

Facts of Analog WiRELESS:

- The signal from a camera can be picked up by multiple monitors.
- Antennas for the monitor & camera need "line of sight" in order to get a good signal.
- It is susceptible to interference.
 - Overhead power lines, cell phones, other WiRELESS items with close frequencies.
- Analog WiRELESS items cannot be mixed with digital WiRELESS items.

Analog WiRELESS Camera Frequencies

- | | |
|-----------------------------|-----------------------------|
| CHANNEL 1 - 2414 MHz | CHANNEL 2 - 2432 MHz |
| CHANNEL 3 - 2468 MHz | CHANNEL 4 - 2450 MHz |

A-CDW7M1C Digital WiRELESS Quad CabCAM™ Camera Observation System

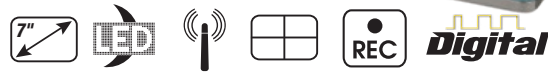
Quad monitor with recording capability.

(1) Weatherproof Digital Color Camera

- Infrared Illuminators allow up to 32 feet of night visibility
- 130 yard transmission range
- Image mirroring capability
- Designed to handle off-road conditions
- Audio capability
- Cameras require 12V-24V power source

7" Color Digital Quad Monitor

- 4 Camera capability
- 2.4GHz digital WiRELESS receiver
- Audio speaker
- Recording capability on 128GB Micro SD/TF card (not included)
- 8 Pin wire harness



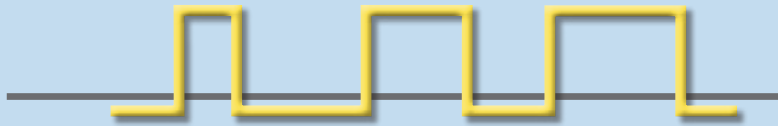
Accessories

- Ball Swivel Mounting Bracket with Mounting Pad
- Stationary Mounting Bracket with Thumb Screws
- Sunshield
- A/C Power Adapter
- (2) Hard Wire Power Adapters



Not compatible with analog cameras. Must use A-DWC86 digital cameras. See the WiRELESS camera page for more info. 4 cameras can be "paired" to this monitor. Cameras can only be "paired" to one monitor. For situations where one camera needs to be viewed on several monitors see our analog WiRELESS system.

Digital WiRELESS Transmission



Digital WiRELESS is the transmission of audio & video analog signals encoded as digital packets over high bandwidth radio frequencies. Digital WiRELESS features Frequency Hopping Spread Spectrum. CabCAM™ items use 2.4GHz frequency. The transmission between the antennas is what is considered WiRELESS. The cameras still need to be connected to a 12 or 24 volt power source.

Facts of Digital WiRELESS:

- The signal is highly secure and resistant to jamming and interference.
- The signal is free from interference from external devices.
- The strength of the signal is much higher than analog.
- High-quality video & audio
- A device pairing process is required to synchronize the camera and the monitor.
 - Cameras can only be paired to a single monitor.
 - Signals from cameras will not interfere or overlap with one another.

**A-WCCH1
A-WCCH3**

**A-WCCH2
A-WCCH4**

Analog WiRELESS 110° Color Camera

- For use with WiRELESS CabCAM™ systems with analog transmission
- Channel 1, Channel 2, Channel 3, and Channel 4 cameras for 4 channel systems
- Infrared illuminators allow up to 32' of night visibility
- Power supply jack
- 3' DC adapter wire included
- Weatherproof and constructed to withstand off-road conditions
- Audio capabilities



A-DWC86

Digital WiRELESS 110° Color Camera

- For use with WiRELESS CabCAM™ systems with digital transmission; A-CDW7M1C & A-DW7M only
- Infrared illuminators allow up to 32' of night visibility
- Power supply jack
- 3' DC adapter wire included
- Weatherproof and constructed to withstand off-road conditions
- Audio capabilities



A-DWC32

Digital WiRELESS 110° Color Camera

- For use with WiRELESS CabCAM™ receiver with digital transmission; A-DWR96 only
- Infrared illuminators allow up to 32' of night visibility
- Power supply jack
- 3' DC adapter wire included
- Weatherproof and constructed to withstand off-road conditions
- Audio capabilities



A-DWC86WL

Digital WiRELESS 110° White LED Color Camera

- For use with WiRELESS CabCAM™ receiver with digital transmission; A-CDW7M1C & A-DW7M only
- White LED illuminators for better visibility and color quality up to 32' of night visibility
- Power supply jack
- 3' DC adapter wire included
- Weatherproof and constructed to withstand off-road conditions
- Audio capabilities
- Use in air-seeder tanks and other dark areas



A-DWC32WL

Digital WiRELESS 110° White LED Color Camera

- For use with WiRELESS CabCAM™ receiver with digital transmission; A-DWR96 only
- White LED illuminators for better visibility and color quality up to 32' of night visibility
- Power supply jack
- 3' DC adapter wire included
- Weatherproof and constructed to withstand off-road conditions
- Audio capabilities
- Use in air-seeder tanks and other dark areas



A-CPA509

WiRELESS CabCAM™ Rechargeable Battery

- For use with WiRELESS CabCAM™ cameras
- Holds up to 14 hours of charge*
- Rechargeable, USB & 12V wall charger included
- Recharge time: 4hr via AC adapter, 12hr via USB
- Magnetic mount
- Weatherproof
- Temperature Range: -4°~113° F (-20°~45° C)
- 4" x 2.5" x 1.625" (100mm x 64mm x 41mm)



To be used with WiRELESS CabCAM cameras or A-DWT34 WiRELESS transmitter

*14 hours for WiRELESS cameras. Actual time may vary. Use in darkness will consume charge quicker due to illuminator activation. Battery can be used with WiRELESS monitors, holding up to 4.8hrs charge.

A-CWM7 7" Analog LCD Color Monitor

- For use with WiRELESS CabCAM™ systems with analog transmission
- High resolution color LCD monitor with antenna
- 2.4GHz WiRELESS receiver with four channels and four camera capability
- Supports 12V or 24V automotive battery
- Support attaching slot, power supply terminal, and audio speaker
- Power indicator, remote control receiving window, POWER, MENU, Brightness, & Channel buttons

Analog



A-DW7M 7" Digital Quad Monitor

- For use with WiRELESS Quad CabCAM™ system with digital transmission
- High resolution quad color monitor with antennas
- 2.4GHz digital WiRELESS receiver and four camera capability
- Support attaching slot, power supply terminal, and audio speaker
- Power indicator, remote receiving window, POWER, MENU, SEL, Channel buttons
- Supports 12V or 24V automotive battery
- Recording capability on 128GB Micro SD/TF card (not included)

Digital



A-MG539 Magnet Camera Mount

- For use with CabCAM™ cameras utilizing the standard U-bracket
- For cameras with V-bracket mount
- Mount a CabCAM™ camera to any magnetic surface
- Ultra strong
- Rubber coated to protect paint
- 3.22" diameter



A-DWT34 Digital WiRELESS Transmitter

- Add to any wired CabCAM™ camera to make WiRELESS
- Can only be "paired" with (1) A-DWR96 Digital WiRELESS Receiver
- 2.4GHz digital WiRELESS transmitter
- Can be used on 12-24 volt applications
- Weatherproof metal housing

Digital



A-DWR96 Digital WiRELESS Receiver

- Convert a WIRED Monitor to WiRELESS
- Can only be "paired" with (1) A-DWT34 Digital WiRELESS Transmitter or (1) A-DWC32 Digital WiRELESS Camera
- 2.4GHz digital WiRELESS receiver
- Can be used on 12-24 volt applications
- Weatherproof metal housing

Digital



A-WA3 **Standard WiRELESS Antenna**

- For use with WiRELESS CabCAM™ systems, Analog & Digital
- 4.5" long
- Weatherproof

A-ANT53 **WiRELESS Antenna**

- For use with WiRELESS CabCAM™ systems, Analog & Digital
- 9.75' external cord
- Weatherproof
- 5dB

A-ANT638 **WiRELESS Patch Antenna**

- For use with WiRELESS CabCAM™ systems, Analog & Digital
- 9.75' external cord
- Weatherproof
- 3dB

A-AEC16 **WiRELESS Antenna Ext. Cord**

- For use with WiRELESS CabCAM™ systems, Analog & Digital
- 16'

A-AD520 **Voltage Reducer Adapter**

- For use with WiRELESS CabCAM™ systems
- For 12 volt WiRELESS cameras, this reducer allows cameras to be used on machines having higher voltage systems
- Bare power & ground wires on one end

A-DCW1 **DC Adapter Wire**

- For use with CabCAM™ systems
- 3' long
- (5) pack

A-HNSW7 **8 Pin Wire Harness**

- For use with WiRELESS CabCAM™ 7" monitors with analog transmission
- Jack for AC/automotive power adapter/DC adapter

A-HNS27 **7" Quad Digital WiRELESS Harness**

- For use with WiRELESS CabCAM™ 7" monitors with digital transmission
- Jack for AC/automotive power adapter/DC adapter

A-PVAKIT **Power/Video Kit**

- For use with CabCAM™ systems
- 2000 mA AC adapter
- Automotive power adapter
- AV conversion cable

A-BRK7M **7" Monitor Bracket Kit**

- For use with A-CWM7 & A-DW7M WiRELESS monitors
- U-support bracket with threaded mounting knobs
- Ball swivel bracket with stick pad
- Flush mount bracket
- Sunshield

A-BRK540 **Monitor Bracket**

- 360° horizontal rotation angle, 90° side rotation angle
- Made of aluminum alloy
- Compatible with all CabCAM™ LCD monitors with metal mount slot.
- Mounting hardware not included





Download the CabCAM™ app on Google Play or the Apple App Store and use your phone or tablet with CabCAM™ HD WiFi cameras.



A-WFC697 HD Wifi 110° Color Camera

- For use with the CabCAM™ App on compatible phones and tablets
- Infrared illuminators allow up to 32' of night visibility
- 196' (60M) transmission range when connected to one device
- Can be connected to up to 4 devices at once, but reduces transmission range significantly (32', 10M)
- Lithium-ion battery, rechargeable
- Includes AC adapter and USB charging cables (3hr/8hr recharge time)
- Battery lasts up to 12 hours, will consume charge quicker when infrared illuminators are activated
- Strong magnetic base
- Weatherproof and constructed to withstand off-road conditions
- Audio capabilities



A-WFC673 HD Wifi 110° Color Camera

- For use with the CabCAM™ App on compatible phones and tablets
- Infrared illuminators allow up to 32' of night visibility
- 196' (60M) transmission range when connected to one device
- Can be connected to up to 4 devices at once, but reduces transmission range significantly (32', 10M)
- Power supply jack
- 3' DC adapter wire included
- Weatherproof and constructed to withstand off-road conditions
- Audio capabilities



A-ANT311 Antenna

- For A-WFC697



A-ANT373 Antenna

- For A-WFC673 & A-WFT473



A-WFT473 HD Wifi Transmitter

- For use with the CabCAM™ App on compatible phones and tablets & wired CabCAM™ cameras
- HD camera required for HD to display in HD resolution. Non-HD cameras are compatible, but will display in standard definition.
- 196' (60M) transmission range when connected to one device
- Can be connected to up to 4 devices at once, but reduces transmission range significantly (32', 10M)
- Power supply jack
- 3' DC adapter wire included
- Can be used on 12-24 volt applications
- Weatherproof metal housing



A-RCV320 Port Plug

- For A-WFC697



A-CBL2050 USB Power Cable

- For A-WFC697
- 20.5"



CabCAM™

Many GPS units in the Agricultural market now offer video capability. If you have a GPS display already installed in your equipment, add video capability with any WIRED CabCAM™ Camera and one of these adapter cables created specifically for your application

ADD A CabCAM™ CAMERA TO AN ALREADY INSTALLED GPS DISPLAY! →



A-ALHNS ADAPTER CABLE

Adapts Ag Leader Integra & Versa

12.5' Cable, 4 Camera Capability

A-CBL20 ADAPTER CABLE

Adapts Ag Cam, Ag Leader Integra, TeeJet Matrix 570G/
840G, FW Murphy Powerview 750 w/NTSC format

AGCO displays with PAL operating systems, MUST use CabCAM™
A-PAL110C Camera

A-CBL2630 ADAPTER CABLE

Adapts GreenStar 3 2630

10' Cable, 3 Camera Capability

A-GS3C ADAPTER CABLE

Adapts GreenStar Command Center Integrated Display;
7R, 8R, & 9R Series JD Tractors & S Series Combines

20' Cable, Single Camera Capability

A-GS3C1F ADAPTER CABLE

Adapts GreenStar Command Center Integrated Display;
7R, 8R, & 9R Series JD Tractors & S Series Combines

1' Cable, Single Camera Capability

A-CBL6R ADAPTER CABLE

Adapts GreenStar 3 Command Center Integrated Display to
camera; 6R Series JD Tractors

20' Cable, Single Camera Capability

A-CBL6989 ADAPTER CABLE

Adapts JD R4023, R4030, R4038, & R4045 Sprayer
Command Center

17" Cable, 2 Camera Capability



A-CBL4640 ADAPTER CABLE

*Adapts Gen 4 4640 Universal Display;
JD Tractors, Combines, Sprayers*

142" Cable, Four Camera Capability



A-TRM20 ADAPTER CABLE

Adapts Trimble AgGPS FmX, CFX/FM-750 or FM 1000

20' Cable, Single Camera Capability



A-CBL300 ADAPTER CABLE

*Adapts Case-IH AFS PRO 200, 300, & 700;
New Holland Intelliview II, III, IV*

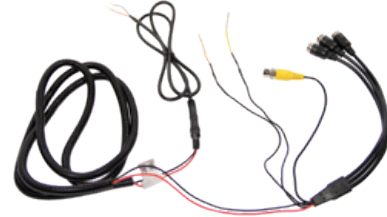
36" Cable, Single Camera Capability



A-CBL700 ADAPTER CABLE

Adapts Case-IH AFS PRO 700 & New Holland Intelliview IV

72" Cable, 3 Camera Capability



A-CBL800 ADAPTER CABLE

Adapts Voyager

8" Cable

Connect a CabCAM™ camera to a Voyager system/monitor



A-CBL2077 ADAPTER CABLE

Adapts Raven Viper 4 Monitor

90" Cable, 4 Camera Capability

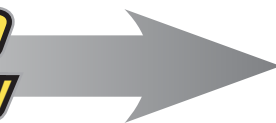


A-SW932 CabCAM™ SWITCHBOX

- Expand camera capability!
- For use with wired CabCAM™ cameras
- Connect four cameras to one camera port
- Push buttons on control box to select camera



EXPAND
Camera Capability



For a WiRELESS option, connect the A-DWR96 Digital WiRELESS Receiver to one of these GPS cables and pair either the A-DWC32 Digital WiRELESS Camera or the NEW A-DWT34 Digital WiRELESS Transmitter connected to a WIRED CabCAM™ camera.



A&I Products offers mounting brackets for a professional finish to your cab when installing a CabCAM™ system. These brackets are available for 8 popular cabs for John Deere, Case-IH, & New Holland Applications.

A-3190MB **MONITOR BRACKET**

For Case-IH 71, 72, & 89 Series

Includes 6" x 9" tray

Fits Case-IH TRACTOR: 7110, 7120, 7130, 7140, 7150, 7210, 7220, 7230, 7240, 7250, 8910, 8920, 8930, 8940, 8950



A-3178MB **MONITOR BRACKET**

For Case-IH MX & Magnum Tier 4

Includes 6" x 9" tray, does not fit 2014 models

Fits Case-IH TRACTOR: Magnum 215, Magnum 245, Magnum 275, Magnum 305, Magnum 335, MX210, MX215, MX230, MX245, MX255, MX285, MX305



A-3155 **MONITOR BRACKET**

For New Holland T-Series

Includes 6" x 9" tray

Fits New Holland TRACTOR: T8010, T8020, T8030, T8040, T8050



A-3152CL **MONITOR BRACKET CLAMP**

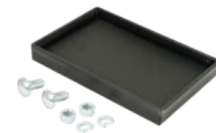
For New Holland T-Series

Fits New Holland TRACTOR: T8010, T8020, T8030, T8040, T8050



A-3176 **TRAY PAD**

6" x 9"



A-3177 **TRAY PAD**

9" x 9"



A-3189 **MONITOR BRACKET**

For John Deere Sound Guard Cab

Includes 6" x 9" tray

Fits John Deere TRACTOR: 2040, 2140, 2150, 2240, 2255, 2350, 2355, 2440, 2550, 2555, 2640, 2750, 2755, 2840, 2940, 2950, 2955, 3040, 3055, 3140, 3150, 3155, 3255, 4030, 4040, 4050, 4055, 4230, 4240, 4250, 4255, 4430, 4440, 4450, 4455, 4555, 4560, 4630, 4640, 4650, 4755, 4760, 4840, 4850, 4955, 4960, 8430, 8440, 8450, 8630, 8640, 8650, 8850



A-3175 **MONITOR BRACKET**

For John Deere 7000-7010 Series

Includes 6" x 9" tray

Fits John Deere TRACTOR: 7600, 7610, 7700, 7710, 7800, 7810



A-3172 **MONITOR BRACKET**

For John Deere 8000-8020 Series

Includes 6" x 9" tray

Fits John Deere TRACTOR: 8100, 8100T, 8110, 8110T, 8120, 8120T, 8200, 8200T, 8210, 8210T, 8220, 8220T, 8300, 8300T, 8310, 8310T, 8320, 8320T, 8400, 8400T, 8410, 8410T, 8420, 8420T, 8520, 8520T



A-3173 **MONITOR BRACKET**

For John Deere 8030 Series

Includes 6" x 9" tray

Fits John Deere TRACTOR: 7630, 7720, 7730, 7820, 7830, 7920, 7930, 8130, 8230, 8230T, 8330, 8330T, 8430, 8430T, 8530, 9120, 9220, 9230, 9320, 9320T, 9330, 9420, 9420T, 9430, 9430T, 9520, 9520T, 9530, 9530T, 9620, 9620T, 9630, 9630T



A-3174 **MONITOR BRACKET**

For John Deere R Series

Includes 6" x 9" tray

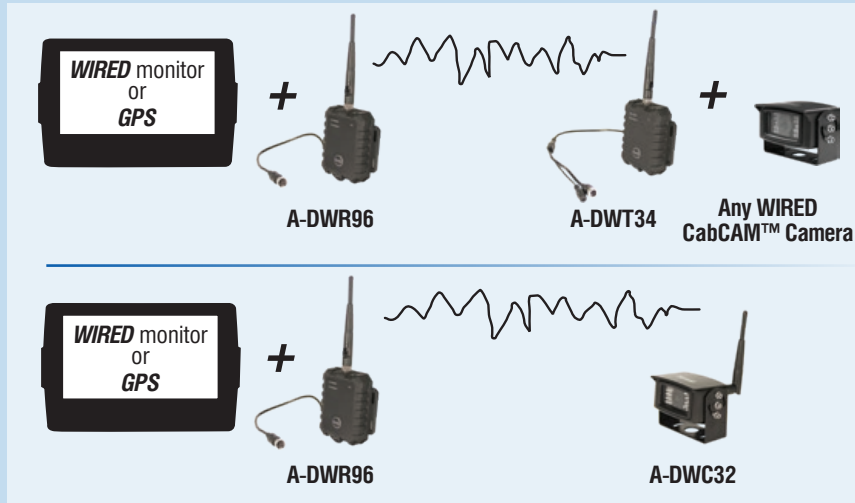
Fits John Deere TRACTOR: 7200R, 7215R, 7230R, 7260R, 7280R, 8225R, 8235R, 8245R, 8260R, 8270R, 8285R, 8295R, 8295RT, 8310R, 8310RT, 8320R, 8320RT, 8335R, 8335RT, 8345R, 8345RT, 8360R, 8360RT, 9360R, 9410R, 9460R, 9460RT, 9510R, 9510RT, 9560R, 9560RT





Wired to WiRELESS Conversion

Make your WIRED video monitor WiRELESS by connecting a Digital WiRELESS Receiver & Transmitter to your system. Connects to GPS monitors for WiRELESS video capability as well.



See page 19 for more information.

White LED CabCAM Systems

White LED Illuminators work more effectively in air seeder tanks than infrared due to dust and debris and reflection. We have solutions that make it easy to see in your tank!

A-CWL7M1C

The same kit as A-CC7M1C but w/ a white LED camera

A-CWL7M2CQ

The same kit as A-CC7M2CQR but w/ white LED cameras

A-CWL9M2CQ

The same kit as A-CCT9M2CQ but w/ white LED cameras



See pages 6-9 for more info on standard definition Wired systems





PLUG & PLAY



A-MC110S 110° CabCAM™ Camera

This camera is a plug-and-play solution for 2017 and newer John Deere S-Series combines factory fitted with mounts and wiring for cameras overseeing the unloading auger, grain tank, and rear view.

- Compatible with Greenstar 3 2630 & CommandCenter GPS
- Direct plug & play
- Mounting bracket features 4-hole bolt pattern for direct fitment
- Includes all mounting hardware (not shown)

SPECIFICATIONS

- Weatherproof
- Color video with audio, Image mirroring capable
- 110° Viewing Angle
- Automatic Infrared Illuminators allow night vision to 32'

These cameras and cables are not compatible with standard CabCAM™ camera observation systems



A-PVC20S
A-PVC65S

20' Extension Cable
65' Extension Cable

Extension cables are available if relocating the cameras from the factory mount is desired.

Cab
CAM™

www.theCabCAM.com

Available at your local A&I Products Reseller