

# AgPro's insights

# The Top 5

Feb 1 2021

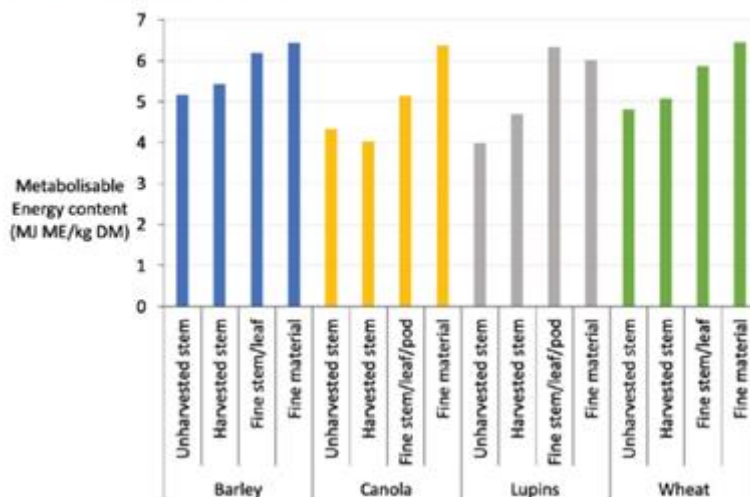


## GRAZING MODERN STUBBLES

Stubbles average 20% of total annual feed so we need to pay them more attention! The graph shows average stubble residues- with 50% of stubble being stem. Note non-grain components don't have very high energy, nor enough protein for weaners! The full research is worth your time if wanting to better manage stubble grazing: [ARTICLE](#) (CSIRO research, funded by AWI & MLA)

We've also included our FEED CALCULATOR as an attachment to help with rations and feed budgeting.

Figure 2: Metabolisable energy content (MJ ME/kg dry matter) of components of barley, canola, lupins and wheat



---

## SHEARING SHEDS

A new program to help make shearing sheds safer, and “butt-cover” producers. The document and app has handy checklists, outlines legal obligations and analysing risk. SafeSheds from PGA, WAFarmers, SCAA and WoolProducers: [www.wool.com/safe-sheds](http://www.wool.com/safe-sheds)

We've also got AWI shed signage packs if you still need- just contact us.

---

## WATER

If you haven't read our writeup on water quality, salinity & desalinators, check it out:

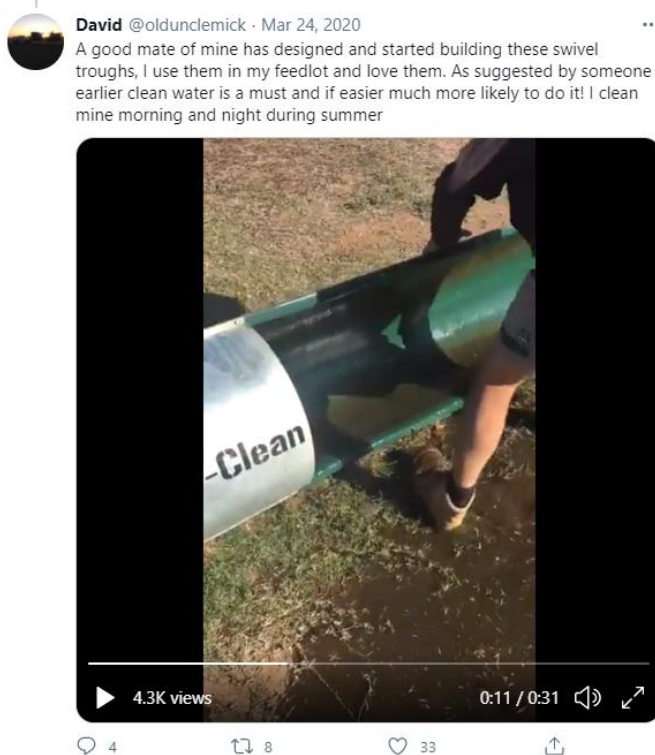
[ARTICLE](#)

We've also heard of increased interest in HexaCover, dam covers made of plastic disks that can reduce evaporation by 90%: [HEXACOVER](#)

---

## EASY CLEAN TROUGH

Trawling through Twitter you come across some handy new ideas: "EweClean" - a swivel trough that you just tip over to clean: <https://t.co/Z3ovpNx5UI>



---

## 4 WEEK JOINING

As joining begins, its worth having a rethink about joining length. This is assuming you have already nailed managing condition score! LifeTimeEwe data in the graph below shows that roughly 90% of ewes are pregnant within four weeks. The question is, is it worth sacrificing flexibility and ease of management chasing a marginal increase in scanning percentage?

**Impact of late joining and joining period on potential reproduction and survival to hogget age**  
(rams in 1st Feb, 100% ewes cycling)

