

Top 5

August 7th, 2024

TRUCK SIGNAGE-over 22m

Some of you have big rigs so listen up! Changes came in in July for truck signage- this will be enforced in January. All rigid truck, road train and long vehicle combinations over 22 metres are required to show on their rear trailers how long they are and the number of car lengths this equates to. This instead of the 'road train' and 'long vehicle' signs.

At the moment, its very hard to find these signs as MainRoads didn't notify anyone until it implemented the rules, but get sourcing as fines will be hefty.

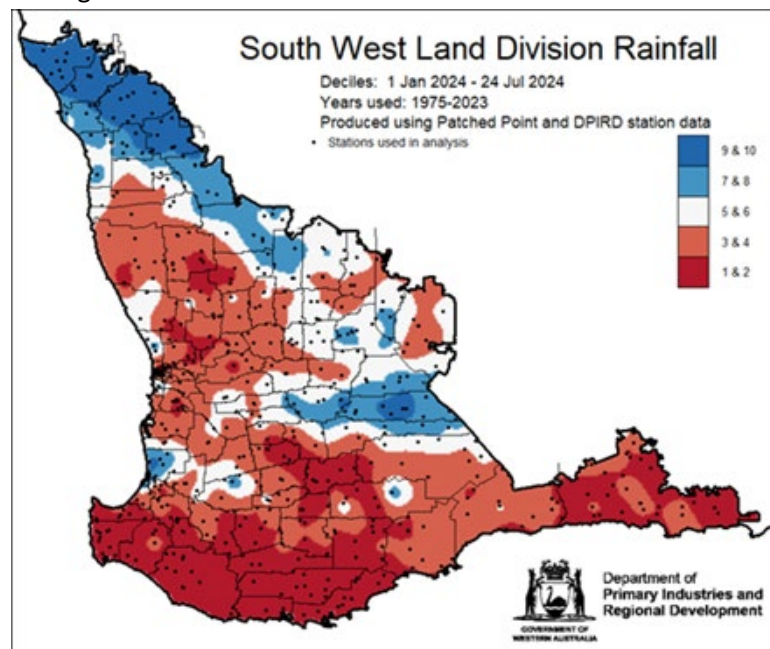
WORKERS PAY

In case you had missed is, July 1 saw increases in the minimum wage, award and super rates. Talk to your accountant, or check the Pastoral Award, which farm workers fall under (unless you have a contract in place with better pay, not total package benefits).

RAIN GLORIOUS RAIN

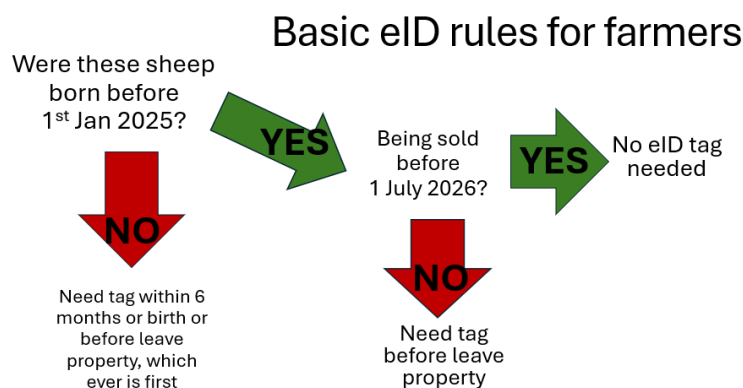
It finally feels wintery. The last fortnight has pushed most areas into half-decent seasons. For those not active on social media, this decile map has been making the rounds- Showing up to the end of July, the season was in the lower

deciles. Recent rains combined with BOM forecasts are indicating we should finish the season with above average August-October rain, which pushes the season into a true average rainfall season.



TAG RULES

Anyone else still confused about the eID rules? Have no fear, AgPro is rolling out a project to help. With MLA funding, we're here to help you understand what needs to be done when, your options, and what to do if you want to start using the tags to collect data. First off, here's the rules FOR FARMERS:



COMING UP

Keen on pasture? Within coo-ee of Wagin? 14th of August is worth locking in to see the difference in biomass from common varieties, and fert treatments.



 **PASTURE PRO
FIELD DAY**

WEDNESDAY 14TH AUGUST, 2024 | 1PM – 5PM
SHEARING SHED AT XAVIER WHITE'S PROPERTY,
2051 BULLOCK RD, BALLAYING (WAGIN)

With seasons becoming more variable, many are turning to different pasture management strategies to ensure fast productive growth from their pastures and livestock.

Join the AgPro team at their Pasture Pro Field Day at their demonstration site in Wagin, where they will look at ways to manage pastures in variable seasons and talk about:

- Fertilizer for cereal pasture biomass – High rates of P down the tube? Or is N more important? – Wayne Pluske from Equii will take us through this, how fertilizer interacts with the plant and more.
- Pasture varieties: Early feed? High spring growth? , What's New? – Tim O'Dea from Barenbrug
- Economic modelling of grazing standing lupin fodders – Amelia Gooding
- Update on eID: the rules, timing and compliant, rebate-eligible tags
- Take a look at the 2024 AgPro demonstration site, what have we found so far



Afternoon tea and a BBQ sundowner will be provided, so please RSVP to Brianna 0457064777 or follow the QR code for catering purposes.

This is part of the 'Maximising potential stocking rate through pasture management techniques' project funded by