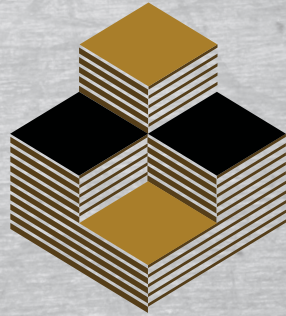


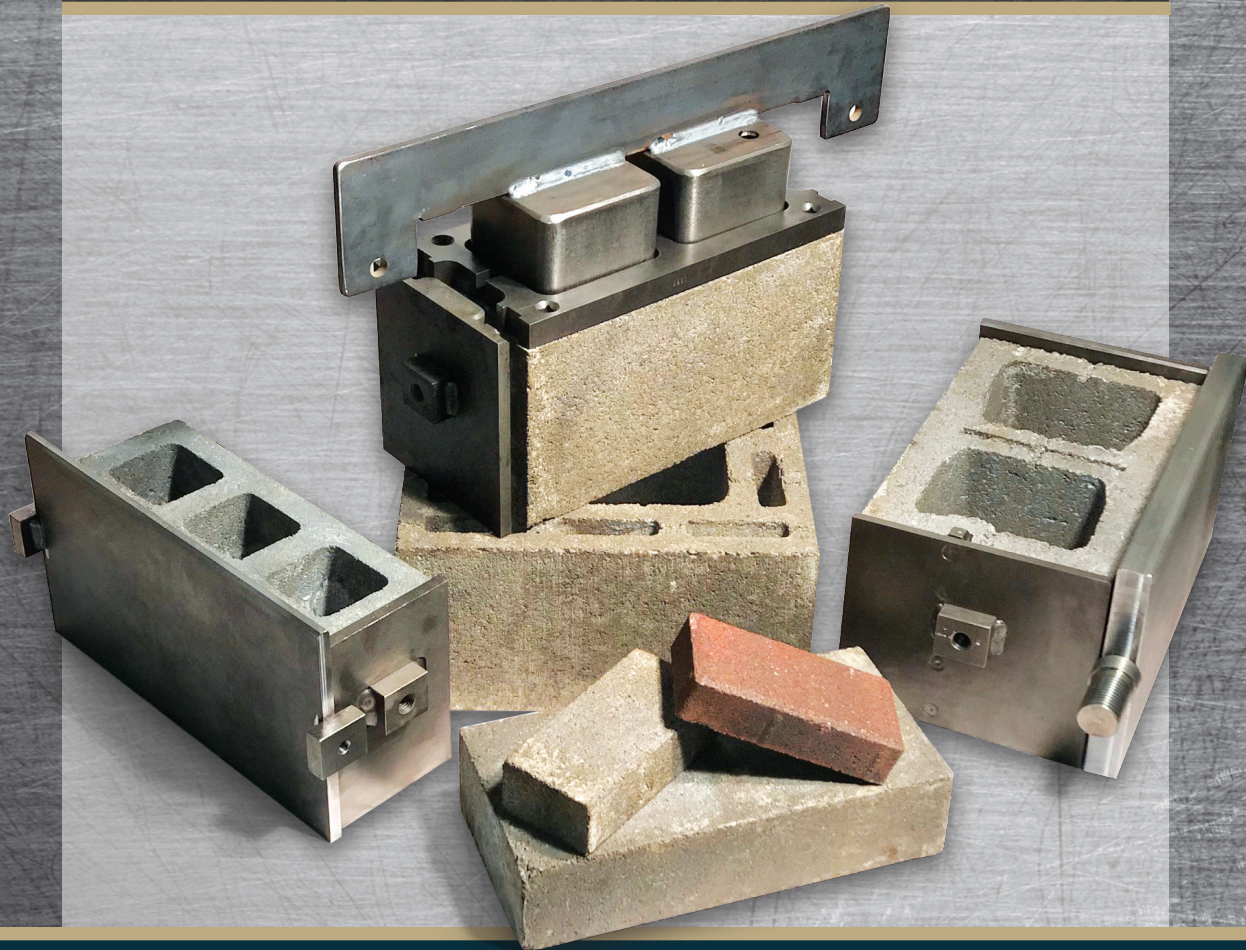
6AAT



# Bergen Industries

Precision Molds

## MOLD PARTS AND ACCESSORIES CATALOG



OVER 100 YEARS OF QUALITY, SUPPORT AND INNOVATION  
800-722-0920 | [bergenindustries.net](http://bergenindustries.net) | [www.dwmachine.com](http://www.dwmachine.com)



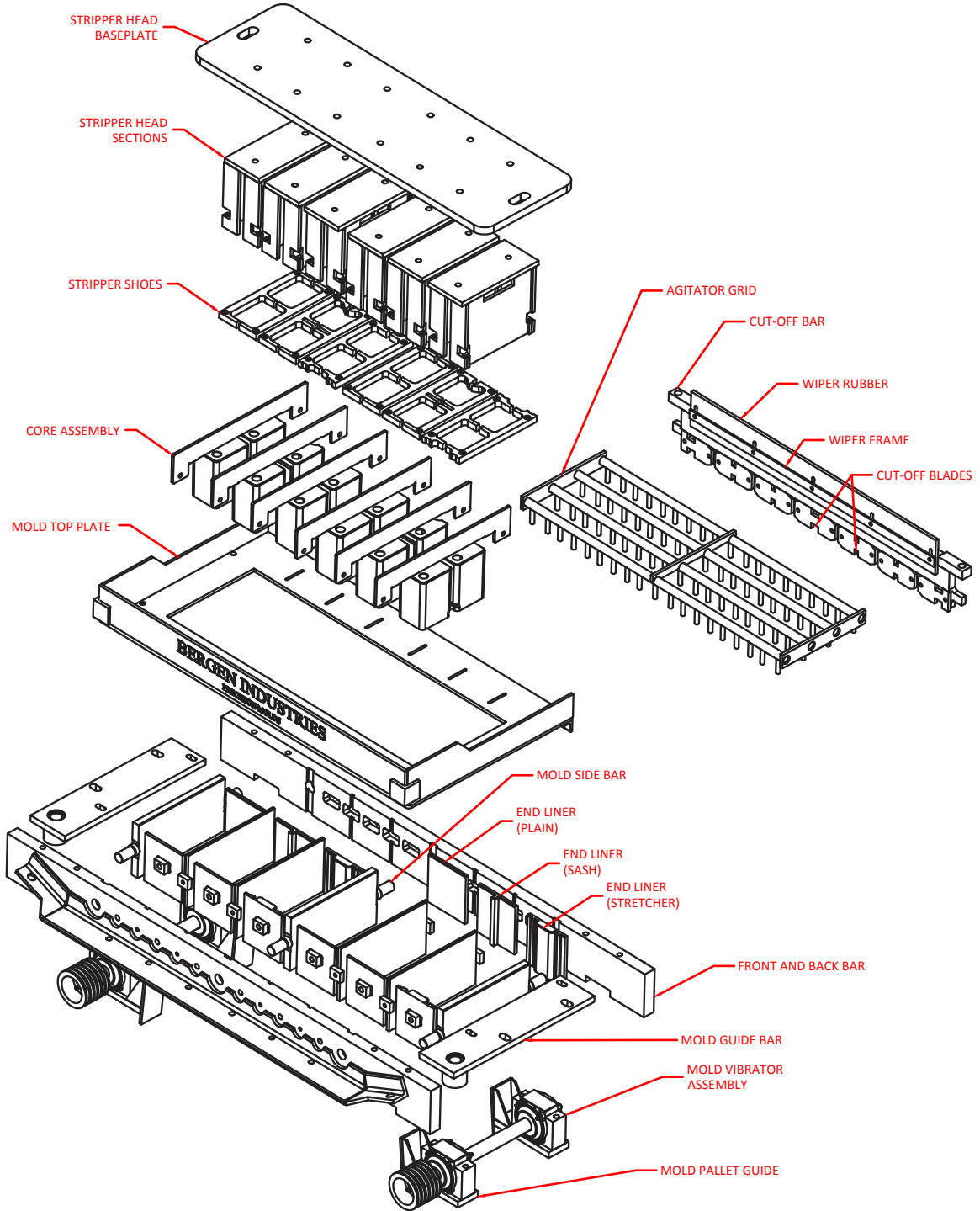
# MOLD PARTS AND ACCESSORIES

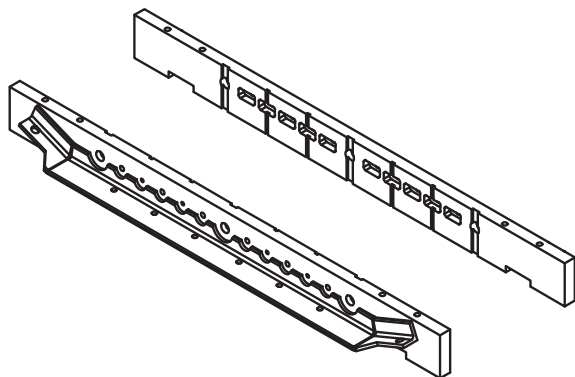
## TABLE OF CONTENTS

PRODUCT	PAGE
▪ <b>BERGEN <u>6AAT</u> MOLD ASSEMBLY</b> .....	3
▪ STANDARD FRAME COMPONENTS .....	4
▪ <b>RELINE COMPONENTS</b>	
▪ STANDARD MOLD SIDE BARS (OUTSIDE DIVISION PLATES).....	4
▪ STANDARD INSIDE DIVISION PLATES.....	5
▪ STANDARD LINERS.....	5
▪ <b>CUT-OFF BARS &amp; MISC</b> .....	6-8
▪ <b>VIBRATORS</b> .....	9

# MOLD PARTS AND ACCESSORIES

## 6-AAT Bergen Mold Assembly

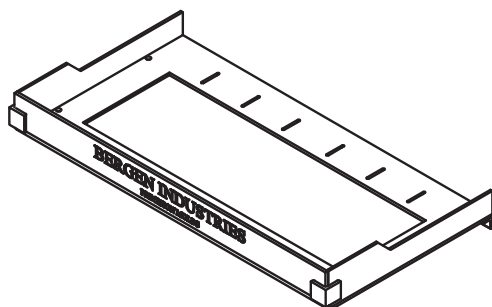




### FRONT AND BACK BARS

FOR 6-AAT MACHINES  
QTY (2) REQUIRED

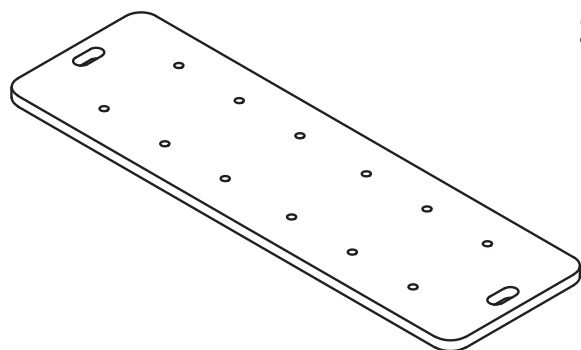
UNIT WIDTH	# UNITS	PART NUMBER
7 5/8	(6)	39336
11 5/8	(4)	39327



### MOLD TOP PLATES

HEAVY DUTY FOR ALL MTPs  
FOR 6-AAT MACHINES

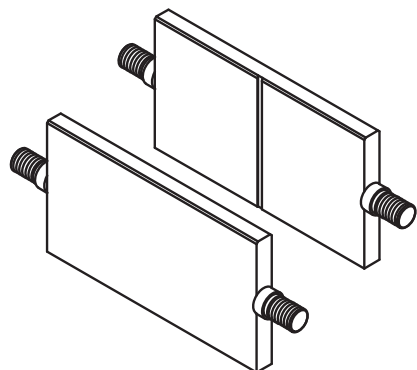
UNIT WIDTH	# UNITS	PART NUMBER
7 5/8	(6)	40786
7 5/8 (SPECIAL S6)	(6)	40786A
11 5/8	(4)	40838



### STRIPPER HEAD BASEPLATES

FOR 6-AAT MACHINES

UNIT WIDTH	# UNITS	PART NUMBER
7 5/8	(6)	12737 YX
11 5/8	(4)	12737 YW



### MOLD SIDE BARS

1 1/4" THICK

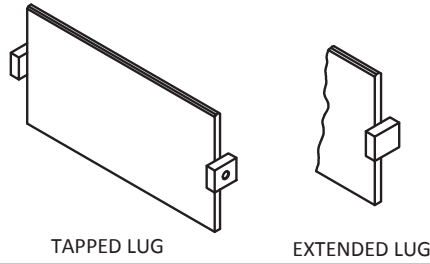
HEIGHT	LENGTH	PART NUMBER
9 1/4	15 5/8	1523 RJ
9 1/4	15 5/8	1523 KM*

\*MOLD SIDE BAR W/ SLOTS FOR HALF UNITS

#### HARDWARE

HEX NUT	3517	STAR WASHER	3558
LOCK WASHER	3501	ELASTIC STOP NUT	3904

# MOLD PARTS AND ACCESSORIES



## DIVISION PLATE

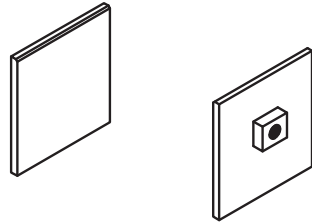
1/2" THICK WITH TAPPED LUG

HEIGHT	LENGTH	PART NUMBER
9 1/4	15 5/8	18353 E
9 1/4	15 5/8	18353 ZM*

1/2" THICK WITH EXTENDED LUG

HEIGHT	LENGTH	PART NUMBER
9 1/4	15 5/8	1534 YJ
9 1/4	15 5/8	1534 UV*

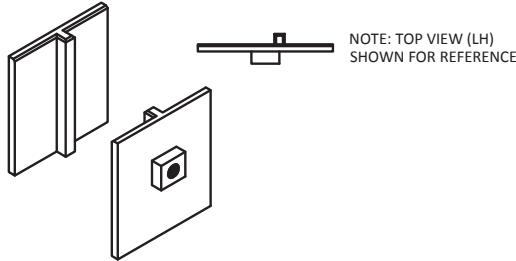
\*DIV. PLATE W/ SLOTS FOR HALF UNITS



## PLAIN END LINERS

8 1/4 HIGH

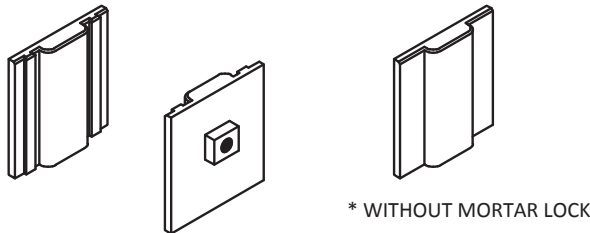
UNIT WIDTH	PART NUMBER
3 5/8	1559
5 5/8	1562
7 5/8	1564
9 5/8	1566
11 5/8	1568



## SASH END LINERS

8 1/4 HIGH, 3/4 x 3/4 SQUARE SASH

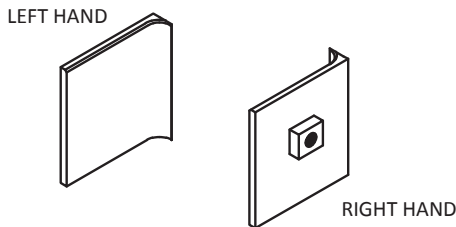
UNIT WIDTH	PART NUMBER
5 5/8	1591 A
7 5/8	1583
9 5/8	1585LH OR RH
11 5/8	1587LH OR RH



## END CORE AND LINER

8 1/4 HIGH, 3/4 WIDE MORTAR LOCK

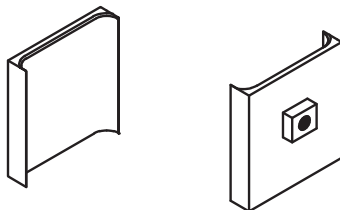
UNIT WIDTH	PART NUMBER
5 5/8	8152
7 5/8	8124
7 5/8	8124 L*
9 5/8	8143
11 5/8	8149



## BULLNOSE END LINER

8 1/4 HIGH, 1" RADIUS BULLNOSE

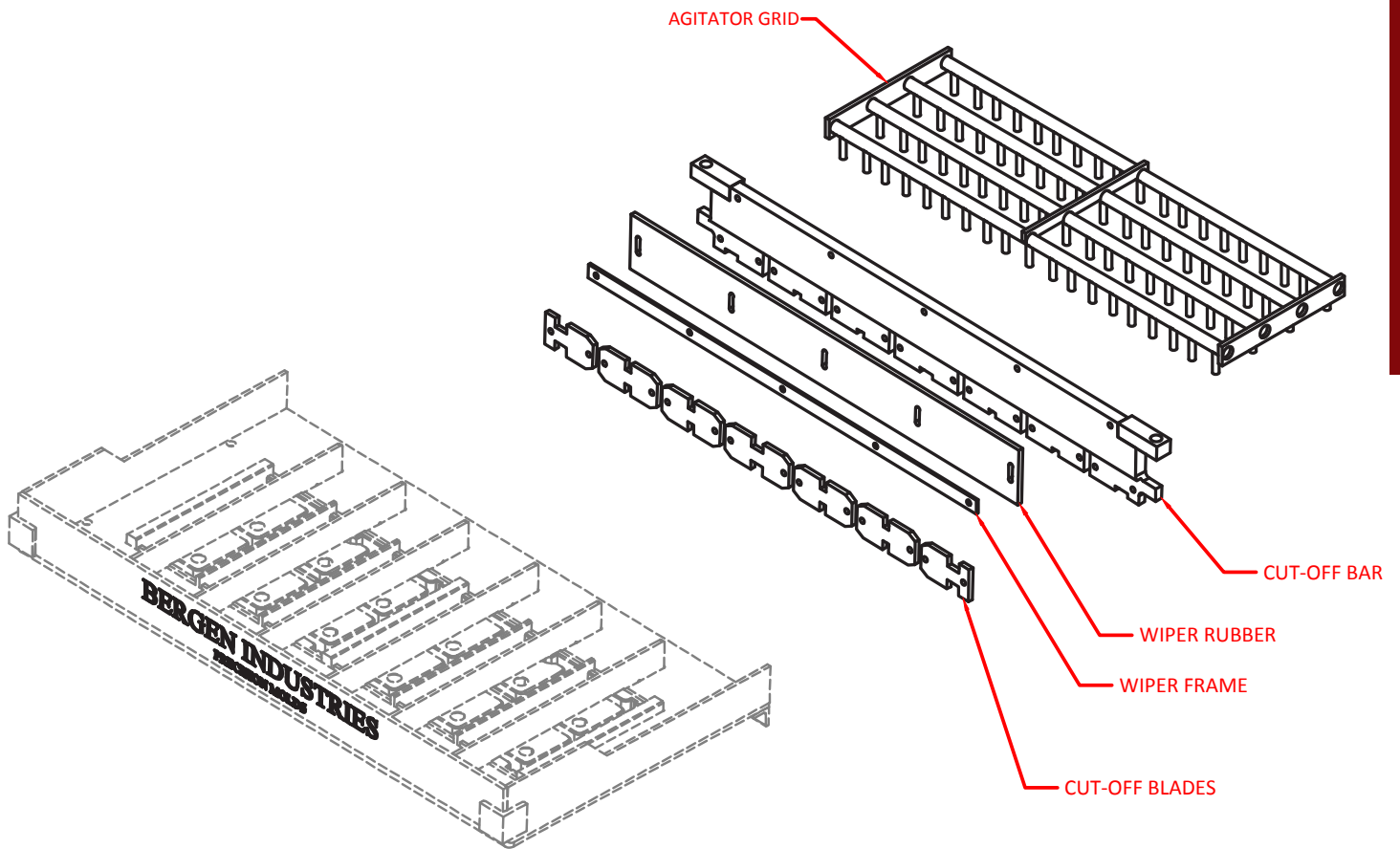
UNIT WIDTH	PART NUMBER
3 5/8	1559 N (LH) or (RH)
5 5/8	1562 N (LH) or (RH)
7 5/8	1564 H (LH) or (RH)
9 5/8	1566 J (LH) or 1566 H (RH)
11 5/8	1568 L (LH) or (RH)



## BULLNOSE END LINER

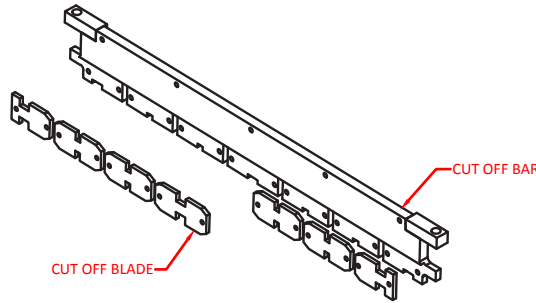
8 1/4 HIGH, DOUBLE 1" RADIUS BULLNOSE

UNIT WIDTH	PART NUMBER
3 5/8	1559 Q
5 5/8	1562 ZC
7 5/8	1564 ZT
9 5/8	1566 T
11 5/8	1568 UT



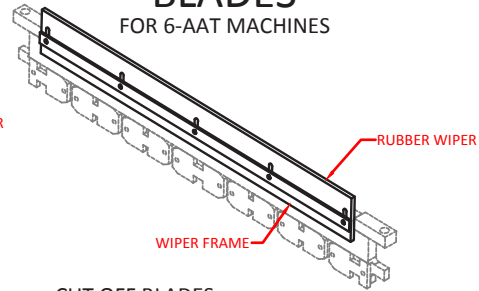


# MOLD PARTS AND ACCESSORIES



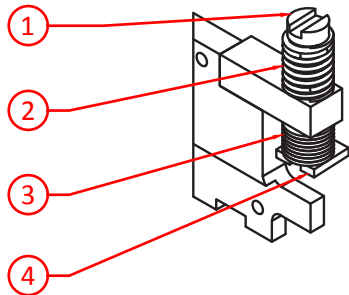
## CUT-OFF BARS AND BLADES

FOR 6-AAT MACHINES



UNIT WIDTH	# UNITS	BAR ONLY	ASSEMBLY*	CUT OFF BLADES 9 1/4 HIGH DIV. PLATE BLADES			WIPER RUBBER	WIPER FRAME
				INSIDE	END	CENTER		
7 5/8	(6)	47193	47193 A	2267 ZG	2267 ZH	2267ZF	1249 XE	1121 XW
7 5/8 RBB	(6)	47193 C**	47193 B**	(4) REQ'D	(2) REQ'D	(1) REQ'D	1249 XJ**	1121 WJ**
11 5/8	(4)	47194	47194 A	2267 ZK	2267 ZL	2267 ZJ	1249 XE	1121 XW
				(2) REQ'D	(2) REQ'D	(1) REQ'D		
							<u>HARDWARE</u>	
							HHCS	3635

\* ASSEMBLIES ARE FOR STANDARD CORE BAR SPACING AND STRIPPER SHOES  
 \*\* SPECIAL FOR RESTRICTED BOND BEAM UNITS (SEE UNIT 43619 IN UNIT SECTIONS)

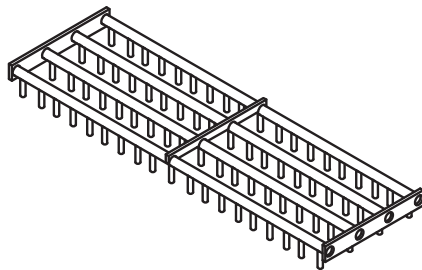


## CUT-OFF BAR SPRING ASSEMBLY

FOR ALL 6-AAT MOLDS

KEY NO.	QTY.*	PART NO.	DESCRIPTION
1	2	3081 ZB	STUD - 6-3/4 LONG
2	2	3081 ZC	SPRING
3	AS NEEDED	38267	WASHERS
4	2	3081 ZA	LOCKING PLATE
-	1	3081 W	WRENCH

\*QUANTITIES ARE PER CUT-OFF BAR ASSEMBLY



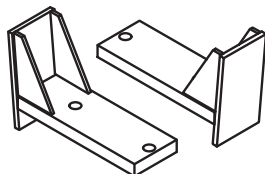
## AGITATOR GRIDS

W/ STANDARD 5/8" DIAMETER X 3" LONG PRONGS  
 FOR 6-AAT MACHINES

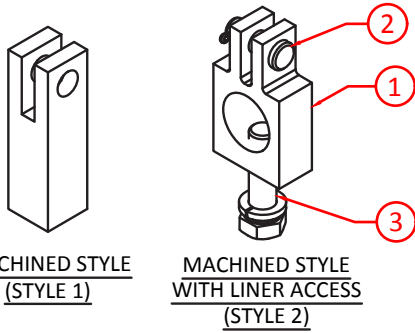
UNIT WIDTH	# UNITS	PART NUMBER
7 5/8	(6)	48144
11 5/8	(4)	48145

## MOLD PALLET GUIDES

FOR ALL 6-AAT MOLDS

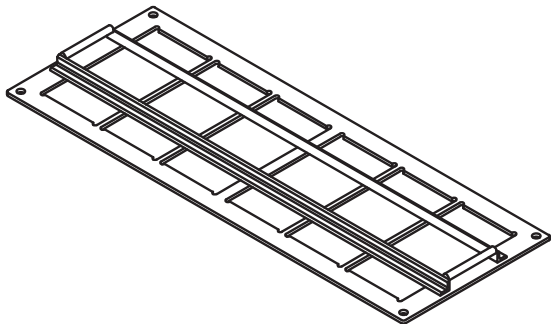


QTY. REQ'D	PART NO.	DESCRIPTION
4	8797 ZD	HEAVY DUTY PALLET GUIDE



### CORE BAR HOLDING LINKS

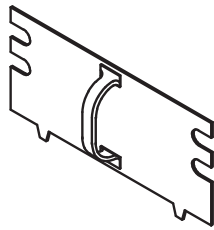
KEY NO.	CORE BAR SIZE	PART NO.	DESCRIPTION
1	3/8 1/2	1024 1024 A	STYLE 1
-	3/8 1/2	1027 1027 C	STYLE 2
2		3518	RIVET AND COTTER PIN
3		3523	3/4 - 10 X 2 3/4" BOLT W/ LOCK WASHER



### STRIPPER SHOE SETUP GAGES

UNIT WIDTH	PART NUMBER
7 5/8	3406 ZS
11 5/8	3406 ZW

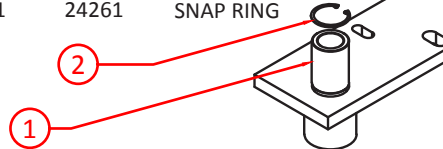
### UNIVERSAL HEIGHT GAUGE



PART NUMBER: 3096 E  
MEASURES (3) UNIT SIZES:  
3 5/8, 5 5/8, AND 7 5/8 HIGH

### MOLD GUIDE BAR

KEY NO.	QTY.	PART NO.	DESCRIPTION
-	1	24262 B	MOLD GUIDE BAR ASS'Y (RH)
-	1	24262 C	MOLD GUIDE BAR ASS'Y (LH)
1	1	51046	NYLON BUSHING
2	1	24261	SNAP RING



### STRIPPER SHOE BOLTS

1/2-13 X 4" LONG, WITH NUT AND LOCK WASHER



FLAT HEAD / SQ. NECK  
38496 (W/ NUT & L/W)  
38496 B (WITH HEAVY NUT)



SLOTTED HEAD  
3507 (W/ NUT & L/W)  
H3507 (HARDENED HEAD)  
H3507 B (WITH HEAVY NUT)



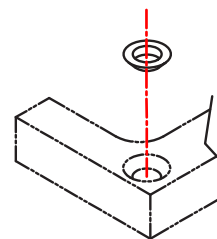
ALLEN HEAD  
38397 (W/ NUT & L/W)  
38397 B (WITH HEAVY NUT)

#### HARDWARE LOCATION

	PART NO.
END LINERS	3550
DIVISION PLATE	3633
MOLD TOP PLATE (WITHOUT VIBRATOR)	38928
MOLD TOP PLATE (WITH VIBRATOR, PALLET GUIDE AND GUIDE BAR)	3983
STRIPPER HEAD SECTION	3547
CUT-OFF BAR BLADES	3548 A
CUT-OFF BAR RUBBER WIPER AND FRAME	3634

#### MISC HARDWARE

1/2 - 13 HEAVY NUT (STANDARD)	3885
1/2 - 13 NYLOCK NUT	38330
1/2" LOCK WASHER	3509
1/2" FLATWASHER	38258

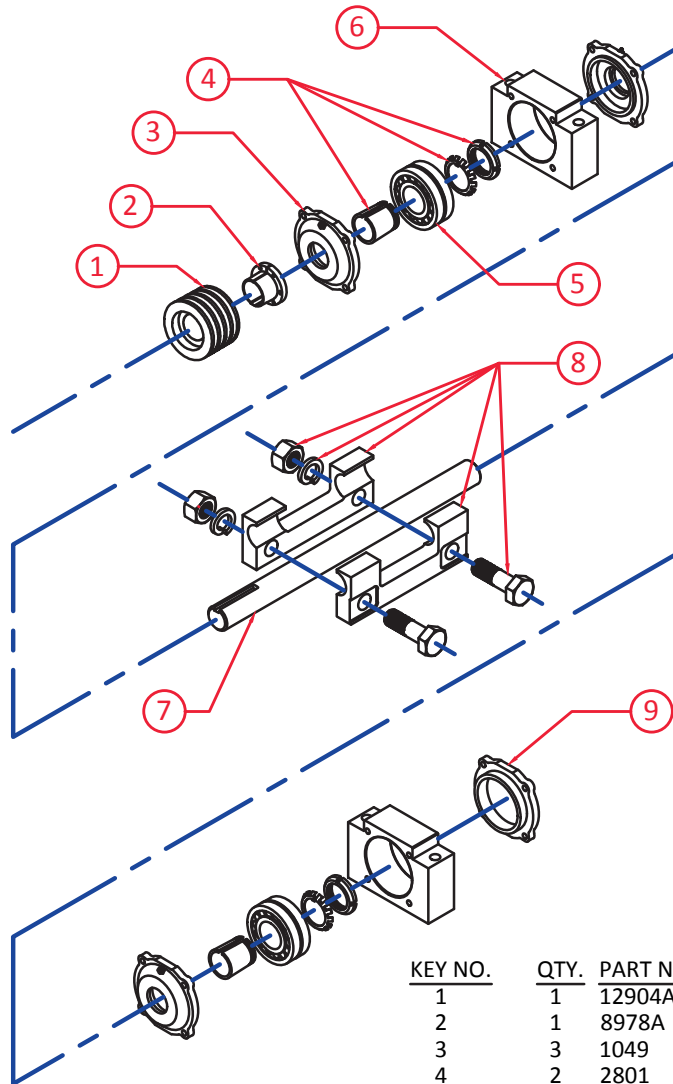


COUNTERSINK INSERT  
FOR 1/2" FLAT HEAD  
BOLTS 38283



# MOLD PARTS AND ACCESSORIES

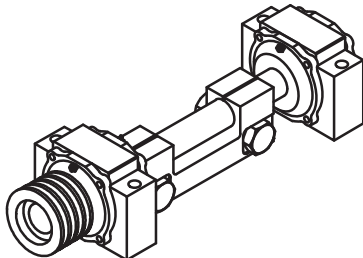
## Vibrator Assembly



KEY NO.	QTY.	PART NO.	DESCRIPTION
1	1	12904A	6-BELT SHEAVE
2	1	8978A	TAPER LOCK BUSHING WITH KEY
3	3	1049	BEARING CAP WITH SEALS
4	2	2801	TAPERED BEARING ADAPTER
5	2	2800A	BEARING
6	2	1051	BEARING HOUSING
7	1	12902	VIBRATOR SHAFT FOR 15 5/8"
		12903	VIBRATOR SHAFT FOR 17 5/8"
8	1	23856	ONE - PIECE VIBRATOR WEIGHTS
9	1	1048	BEARING END CAP

### COMPLETE VIBRATOR ASSEMBLY:

12924W 15 5/8 COMPLETE VIBRATOR ASSEMBLY WITHOUT WEIGHTS, 18" WIDE MOLDS



### VIBRATOR HARDWARE:

QTY. REQ.	PART NO.	DESCRIPTION
8	3538	3/8 - 24 X 4 1/2" LONG BEARING CAP BOLTS
4	3887*	3/4 - 10 X 13" LONG (COARSE THREAD)
4	3910*	3/4 - 10 X 14" LONG (COARSE THREAD)
4	3533*	3/4 - 16 X 13" LONG (FINE THREAD)
4	3842*	3/4 - 16 X 14" LONG (FINE THREAD)

\*INCLUDES NUT AND LOCK WASHER



---

## ABOUT US

---

Located in Drums, PA, Bergen Industries has been a leading manufacturer of precision molds and components for manufacturers of concrete block and hardscape products since 1907.

We know mold performance is a critical component in your production line's costs, efficiency and ultimately your profitability.

Feel free to contact us directly. We can provide a no obligation quote and further discuss what Bergen Industries can do for you.



# Bergen Industries

## Precision Molds

77 Oak St | Drums, PA 18222  
P: 800-722-0920 | F: 570-474-0600  
[www.bergenindustries.net](http://www.bergenindustries.net) | [sales@bergenindustries.net](mailto:sales@bergenindustries.net)

---