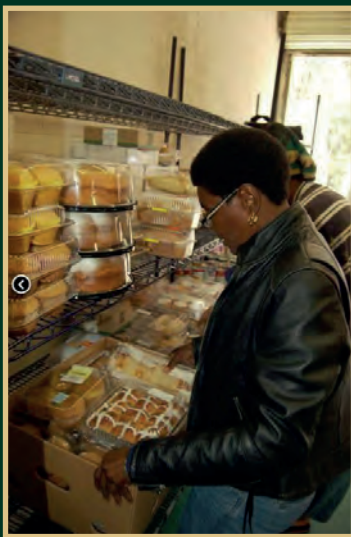




# Wexford Plantation Charitable Foundation 2014 Newsletter

*Supporting Health, Housing, Hunger &  
Educational Charities of the Lowcountry*



# A Letter from Foundation Chairman, Jim Hicks

---

Dear Wexford Property Owners,

Welcome to the first edition of the Wexford Foundation newsletter. The Foundation has launched two very important initiatives this Fall to enhance communications with our supporters, our partner charities, and those that might consider joining our effort to make life better on Hilton Head Island. This newsletter will share the success our partner charities are having with effective use of grants from the Foundation. The second communication vehicle is the recently launched website for the Foundation – [wexfordfoundation.com](http://wexfordfoundation.com). These two views into the Foundation were championed by Foundation Trustees Kathi Bateson and Thom Hill.

The Foundation has a great deal to celebrate this year. Our partner charities are providing services that enable children, seniors, families, and special needs individuals to be more successful. We are thrilled that we are helping third graders get on grade level by providing tutors, enabling Alzheimer's patients and their caregivers to manage the challenges of the disease, and providing expanded technology to the boys and girls of the Island. We love that your donations allow senior citizens to maintain independence in their homes and abused children to get critical counseling during very difficult times. Several of our partner charities provide therapeutic services to special needs children and adults and create stable housing and employment for homeless families. Please be very proud of the contributions your Foundation is making to life on Hilton Head Island. In January, 2013, our first grant cycle, we awarded a total of \$67,000 to eleven local charities and in early 2014 we awarded another \$80,000 to fourteen local charities. Please visit [wexfordfoundation.com](http://wexfordfoundation.com) for a complete list of recipient charities. Our original goal of making a difference through collective giving is working even better than we expected. Thank you for being part of the Wexford Foundation.

This Fall is also the season we receive the grant requests for awards in early 2015. The Grants Committee reviews, grades, and ranks the applications. They examine the mission, the project, and the finances of the requesting charity. The Committee will make recommendations to the Foundation's Board of Trustees in early December. The Trustees will determine how much money is available this year for grants and which requests can be honored. This is also the season for raising money from our donors. We do this with the silent and live auctions to be held at the November 14 gala themed "Puttin on the Ritz – the Roaring 20's". While this promises to be our largest auction so far, we very much need direct donations from the Members of Wexford. Direct donations are the largest component of funds available for grant awards. Please consider supporting our Cornerstone Campaign by pledging to support the Wexford Foundation for one, three, or five years. Contact any Trustee for information on contributing.

Thank you,

Jim Hicks, *Chairman*

[Chairman@wexfordfoundation.com](mailto:Chairman@wexfordfoundation.com)

(843) 842-8714

# 2014 Board of Trustees



Jim Hicks  
*Chairman*



Kathi Bateson  
*Vice Chairman*



Brian Marlowe  
*Treasurer*



Andi Purple  
*Secretary*



Mary Faas



Thom Hill



Sue MacCormack



Bruce Murchison

## 2014 Committees

In order to accomplish the work that the Foundation does in support of local charities, working committees are formed at the beginning of each calendar year. Each committee is led by a Board member, who in turn seeks out volunteers to assist in these efforts. Wexford members are encouraged to come forward to volunteer your time and talents to assist the Foundation. Foundation committees and their chairpersons include:

**Grants** - The Grants Committee is responsible for establishing and executing a process for the grant applicant, reviewing grants and recommending annual grants amounts and recipients to the Board of Trustees. The Grants Committee works with the grantees throughout the year to monitor the use of the Foundation's grant funds and the grantees' progress toward attainment of their stated goals and objectives.

*Co-Chairs: Mary Faas, Bruce Murchison*

*Committee Members: Jill Reed, Mary Reed, Donna Eberl, Sandy Berthelsen, Linda Oliver, Laura Levine, Cyndi Duvall*

**Events** - The Events Committee is responsible for planning, coordinating and executing the Foundation's fundraising and other events throughout the year, including the Fall Gala & Auction, Spring Benefit and Grants Luncheon.

*Chair: Sue MacCormack*

*Committee Members: Heather Cherichella, Cathie Forlenza, Joanna Hicks, Andi Purple, Kim McPhail*

**Communications** - The Communications Committee is responsible for the promotion of the Foundation's efforts, through various forms of media including eBlasts and website maintenance. This Committee is also responsible for public relations efforts related to the Foundation's activities.

*Chair: Thom Hill*

*Committee Members: Kathi Bateson, Kathy Adair, Bobbie Arlotta*

**Finance** - The Finance Committee advises the Board of Trustees on matters related to fundraising, investment and monitoring the Foundation's funds.

*Chair: Brian Marlowe*

*Committee Members: Harry Mellon, Brian Soiref*

*\*All Board and Committee positions are volunteer positions.*

# 2014 FOUNDATION



**Boys & Girls Club of Hilton Head Island (BGCHHI):** The mission of the Boys & Girls Clubs of the Lowcountry, and in every corner of the United States, is "to enable all young people, especially those who need us most, to reach their full potential as productive, caring, responsible citizens."



**The Children's Center:** Since 1967, their mission has been to provide a quality preschool and daycare for the working poor in our community. Their goal is to provide an uninterrupted learning environment that enhances the creative and cognitive development of each child.



**The Children's Relief Fund:** For 22 years, this volunteer driven agency has funded therapies for families who lack the financial resources to do so. Their mission is to provide the special needs children in our area with the appropriate tools to live productive lives in our community.



**Family Promise:** Family Promise is the only organization which provides temporary emergency shelter, family stability and permanent housing solutions for homeless families with children by mobilizing resources from interfaith and the secular community. Their vision is "Every child will have a home."



**Grateful Hearts Soup Kitchen:** Open since November 2010, Grateful Hearts Soup Kitchen, located on HHI, provides a free hot lunch two days a week. No one is turned away and the soup kitchen currently provides lunch to 100 people on HHI. They have no paid staff but rather operate with the help of 65 volunteers. They also collect used winter clothing and pass them to those in need.



**Hope Haven:** The mission statement of Hope Haven is to provide comprehensive services that lead to the healing for child abuse victims and adult victims of sexual assault, rape and incest; and to increase community awareness of these issues through providing education and outreach. They are the only agency providing these services in the area. They provided services to 473 victims last year; 38% were Hilton Head Island and Bluffton residents.



**Literacy Volunteers of the Lowcountry:** Their mission is to increase adult literacy in the greater Beaufort County area by providing leadership, creating awareness, and offering quality instructional services. The Literacy Center equips adults with the reading, writing, math and speaking skills they need to be successful in the family, the workplace and the community.

# GRANT RECIPIENTS



**Meals on Wheels:** Meals on Wheels mission is to deliver one meal a day, five days per week, 52 weeks per year to any person who cannot provide for themselves. Their focus is on those who are elderly or in poor health. Currently this agency is serving 91 clients per day.



**Memory Matters:** Memory Matters is a community-based nonprofit organization which strives to be a center of excellence for persons with Alzheimer's and all forms of dementia and their families by providing daycare programs, support services and education in a compassionate and dignified manner.



**Neighborhood Outreach Connection:** NOC brings educational programs, technology and health screenings to people with limited pathways to academic and economic success. NOC Program Centers have classrooms and Virtual Learning Centers equipped with computers and internet access.



**Sandalwood Food Pantry:** This food bank opened four years ago to feed the hungry and now serves over 550 families. It serves native Islanders who are homeless, unemployed, mentally challenged, as well as the working poor.



**Second Helpings:** Second Helpings collects food from supermarkets, restaurants and stores that would otherwise be thrown away. They deliver 2.6 million pounds of food to 63 nonprofit charities and food banks in Beaufort County. Over 250 volunteers help Second Helpings collect and distribute food for free six days a week.



**Volunteers in Medicine (VIM):** For 20 years, Volunteers in Medicine Hilton Head Island has been providing free health care on Hilton Head Island. Today, more than 600 volunteer physicians, nurses, dentists, social workers and lay volunteers provide more than 30,000 patient visits each year. And, VIM Hilton Head Island serves as the flagship model for 96 free medical clinics across the country.



**Wish Upon A Horse (WUAH):** Operating since April 2011, WUAH provides therapeutic equine riding to special needs children and adults who live on or are visiting Hilton Head Island. Over 50 students are given horseback riding lessons each week, focusing on health and emotional well-being of those with special needs.

# Wexford Plantation Charitable Foundation Mission

Wexford Plantation, a residential community located on Hilton Head Island, SC, has created the Wexford Plantation Charitable Foundation, whose mission is to support with financial and volunteer resources, Beaufort County non-profit organizations, which provide social services for humanitarian needs.

## Foundation Fast Facts

- The Foundation made its first grants (eight) valued at over \$67,000 exactly six months (January 24, 2013) after receiving its 501(c)(3) status from the IRS.
- One year after that (February, 2014), the Foundation made fourteen additional grants valued at over \$80,000.
- Each grant has been monitored to make certain the recipient charity spent the grants as intended.
- Eight Wexford members make up the Board of Trustees that manages the Foundation's business.
- 20 additional volunteers serve on Foundation committees.
- Operating expenses run only about 3% per year – mostly insurance and accounting services.
- The Foundation rotates up to three Trustees each year with new ideas and fresh energy.
- Annually, the Foundation holds three major events including the Charity Gala each autumn which includes an auction.
- The first two auctions generated almost \$30,000 each – all of which went directly to grants.
- The Foundation fiscal year is calendar January 1 - December 31.

## We Have a NEW Website!

[www.wexfordfoundation.com](http://www.wexfordfoundation.com)

Visit the Wexford Foundation website for grant information, the latest news, event photos and more!

The website features:

- About Us
- Events
- Grants
- Join Us
- Press Room



# Cornerstone Campaign & Founders' Society Donors

## **Diamond (\$25,000)**

Joanna and Jim Hicks  
Darlene and Brian Marlowe  
Kim and David McPhail  
Andi and Bill Purple  
Mary Ann and Ron Soldo  
Ariel and Bob Stone  
Didi and Andrew Summers  
Gail and Doug Tozour

## **Platinum (\$10,000)**

Ginny and Bob Agans  
Kelle and Butch Branson  
Ruby and Tom Fudge  
Ann and Bob Grassi  
Lesley and Neil Green

## **Gold (\$5,000)**

Shari and Rick Anderson  
Chris and Terry Baehr  
Beverly and Bob Chell  
Diane and Ben Clark  
Pam and Harvey Geiger  
Anthea and Grog Grogono  
Nancy and Bill Haverland  
Lynn and Thom Hill  
Lucinda and Joe Jacobs  
Betty and Paul Krupa  
Sue and Bob MacCormack  
Marian and Porter Morgan

Laurel and Bruce Murchison  
Kim and Andre Naniche  
Jean and Rich Palmer  
Gale and Terence Seikel  
Jennifer and Harry Stout  
Mary and Tom Tracy  
Mary Lou and Dean Yannucci

## **Silver (\$2,500)**

Bonnie and Richard Burnette  
Elizabeth and Stephen Carter  
Celia and John Cunningham  
Mary Faas and Art Gorman  
Bev and Harry Mellon  
Nancy and Fred Noonan

## **Bronze (\$1,000)**

Kathy and John Adair  
Missy and Jim Bell  
Karin and Mark Brown  
Suzanne and Bill Busch  
Barbara and William Byrd  
Heather and Bob Cherichella  
Cathleen and Brian Crotty  
Donna and James Eberl  
Kathi Bateson and Torrey Glass  
Janice and Frank Fernald  
Cathie and Larry Forlenza  
Annette and Forrest Hayes  
Stefy and Wini Holderied

Jacque and Tim Johnson  
Barbara and Jack Lane  
Trish and Drew Maggard  
Mary Diane and Denny Mulvihill  
Jeanne and Larry Ricciardelli  
Sandy and Carl Rossetti  
Barbara and Brian Soiref  
JoAnne and Don Staffa  
Rutie and George Volanakis  
Linda Williams



*Plaque on display in the Clubhouse*

## Cornerstone Campaign

Now that the initial period the Founders' Society has been completed, the Foundation's new endeavor is its Cornerstone Campaign.

The Cornerstone Campaign is the key aspect in the Foundation's ongoing ability to help organizations, which provide essential help to those in need on Hilton Head Island and in Beaufort County.

The Foundation is now looking for members who will pledge \$500 or more for one to five years. Contributions in any amount are appreciated, and may be paid by check or charged to your member account. Many have used the Foundation for memorial gifts or special Wexford remembrances.

If you are a Wexford member and would like to be a part of the Cornerstone Campaign, please contact either Jim Hicks or Brian Marlowe. They will be glad to provide any information you need.

The Foundation promptly acknowledges all gifts with the appropriate thanks and acknowledgement useful for tax purposes.



Supporting Health, Housing, Hunger & Educational Charities of the Lowcountry

## Fundraising Events



*2013 Fall Gala & Auction - Sock Hop*



*2014 Spring Benefit - Yankee Beef & Oyster Roast*

## Upcoming Events

2014 Fall Gala & Auction - Friday, November 14th **“PUTTIN’ ON THE RITZ”**

Join your Wexford neighbors and friends on **Friday, Nov. 14th** at the **Wexford Clubhouse** **Speak Easy for “Puttin’ on the Ritz,”** a rip-roaring 1920’s Great Gatsby-themed dinner dance event, hosted by the Wexford Foundation. The Foundation’s major fundraising event of the year, this year’s Gala & Auction will bring you back in time to an era where an evening out meant ladies slipping in their flashy flapper dresses and heels, and men donning their top hats and spats, for a time when **Anything Goes!**

**Thanks to you,**

**Wexford continues to make a difference to our neighbors in need.**