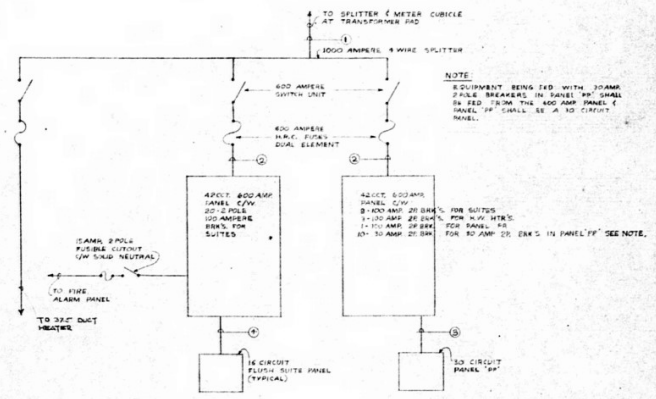


SITE PLAN  
SCALE 1/8" = 1'-0"

ELECTRICAL SYMBOLS	
1	POWER POLE
2	400 AMP 480V 3Ø M.T.S. PANEL
3	400 AMP 480V 3Ø M.T.S. PANEL
4	400 AMP 480V 3Ø M.T.S. PANEL
5	400 AMP 480V 3Ø M.T.S. PANEL
6	400 AMP 480V 3Ø M.T.S. PANEL
7	400 AMP 480V 3Ø M.T.S. PANEL
8	400 AMP 480V 3Ø M.T.S. PANEL
9	400 AMP 480V 3Ø M.T.S. PANEL
10	400 AMP 480V 3Ø M.T.S. PANEL
11	400 AMP 480V 3Ø M.T.S. PANEL
12	400 AMP 480V 3Ø M.T.S. PANEL
13	400 AMP 480V 3Ø M.T.S. PANEL
14	400 AMP 480V 3Ø M.T.S. PANEL
15	400 AMP 480V 3Ø M.T.S. PANEL
16	400 AMP 480V 3Ø M.T.S. PANEL
17	400 AMP 480V 3Ø M.T.S. PANEL
18	400 AMP 480V 3Ø M.T.S. PANEL
19	400 AMP 480V 3Ø M.T.S. PANEL
20	400 AMP 480V 3Ø M.T.S. PANEL
21	400 AMP 480V 3Ø M.T.S. PANEL
22	400 AMP 480V 3Ø M.T.S. PANEL
23	400 AMP 480V 3Ø M.T.S. PANEL
24	400 AMP 480V 3Ø M.T.S. PANEL
25	400 AMP 480V 3Ø M.T.S. PANEL
26	400 AMP 480V 3Ø M.T.S. PANEL
27	400 AMP 480V 3Ø M.T.S. PANEL
28	400 AMP 480V 3Ø M.T.S. PANEL
29	400 AMP 480V 3Ø M.T.S. PANEL
30	400 AMP 480V 3Ø M.T.S. PANEL
31	400 AMP 480V 3Ø M.T.S. PANEL
32	400 AMP 480V 3Ø M.T.S. PANEL
33	400 AMP 480V 3Ø M.T.S. PANEL
34	400 AMP 480V 3Ø M.T.S. PANEL
35	400 AMP 480V 3Ø M.T.S. PANEL
36	400 AMP 480V 3Ø M.T.S. PANEL
37	400 AMP 480V 3Ø M.T.S. PANEL
38	400 AMP 480V 3Ø M.T.S. PANEL
39	400 AMP 480V 3Ø M.T.S. PANEL
40	400 AMP 480V 3Ø M.T.S. PANEL
41	400 AMP 480V 3Ø M.T.S. PANEL
42	400 AMP 480V 3Ø M.T.S. PANEL
43	400 AMP 480V 3Ø M.T.S. PANEL
44	400 AMP 480V 3Ø M.T.S. PANEL
45	400 AMP 480V 3Ø M.T.S. PANEL
46	400 AMP 480V 3Ø M.T.S. PANEL
47	400 AMP 480V 3Ø M.T.S. PANEL
48	400 AMP 480V 3Ø M.T.S. PANEL
49	400 AMP 480V 3Ø M.T.S. PANEL
50	400 AMP 480V 3Ø M.T.S. PANEL
51	400 AMP 480V 3Ø M.T.S. PANEL
52	400 AMP 480V 3Ø M.T.S. PANEL
53	400 AMP 480V 3Ø M.T.S. PANEL
54	400 AMP 480V 3Ø M.T.S. PANEL
55	400 AMP 480V 3Ø M.T.S. PANEL
56	400 AMP 480V 3Ø M.T.S. PANEL
57	400 AMP 480V 3Ø M.T.S. PANEL
58	400 AMP 480V 3Ø M.T.S. PANEL
59	400 AMP 480V 3Ø M.T.S. PANEL
60	400 AMP 480V 3Ø M.T.S. PANEL
61	400 AMP 480V 3Ø M.T.S. PANEL
62	400 AMP 480V 3Ø M.T.S. PANEL
63	400 AMP 480V 3Ø M.T.S. PANEL
64	400 AMP 480V 3Ø M.T.S. PANEL
65	400 AMP 480V 3Ø M.T.S. PANEL
66	400 AMP 480V 3Ø M.T.S. PANEL
67	400 AMP 480V 3Ø M.T.S. PANEL
68	400 AMP 480V 3Ø M.T.S. PANEL
69	400 AMP 480V 3Ø M.T.S. PANEL
70	400 AMP 480V 3Ø M.T.S. PANEL
71	400 AMP 480V 3Ø M.T.S. PANEL
72	400 AMP 480V 3Ø M.T.S. PANEL
73	400 AMP 480V 3Ø M.T.S. PANEL
74	400 AMP 480V 3Ø M.T.S. PANEL
75	400 AMP 480V 3Ø M.T.S. PANEL
76	400 AMP 480V 3Ø M.T.S. PANEL
77	400 AMP 480V 3Ø M.T.S. PANEL
78	400 AMP 480V 3Ø M.T.S. PANEL
79	400 AMP 480V 3Ø M.T.S. PANEL
80	400 AMP 480V 3Ø M.T.S. PANEL
81	400 AMP 480V 3Ø M.T.S. PANEL
82	400 AMP 480V 3Ø M.T.S. PANEL
83	400 AMP 480V 3Ø M.T.S. PANEL
84	400 AMP 480V 3Ø M.T.S. PANEL
85	400 AMP 480V 3Ø M.T.S. PANEL
86	400 AMP 480V 3Ø M.T.S. PANEL
87	400 AMP 480V 3Ø M.T.S. PANEL
88	400 AMP 480V 3Ø M.T.S. PANEL
89	400 AMP 480V 3Ø M.T.S. PANEL
90	400 AMP 480V 3Ø M.T.S. PANEL
91	400 AMP 480V 3Ø M.T.S. PANEL
92	400 AMP 480V 3Ø M.T.S. PANEL
93	400 AMP 480V 3Ø M.T.S. PANEL
94	400 AMP 480V 3Ø M.T.S. PANEL
95	400 AMP 480V 3Ø M.T.S. PANEL
96	400 AMP 480V 3Ø M.T.S. PANEL
97	400 AMP 480V 3Ø M.T.S. PANEL
98	400 AMP 480V 3Ø M.T.S. PANEL
99	400 AMP 480V 3Ø M.T.S. PANEL
100	400 AMP 480V 3Ø M.T.S. PANEL



TYPICAL MAIN DISTRIBUTION, N.T.S.

FEEDER SCHEDULE	
No. 1	8-1/2" HD E. ACB (3Ø) 600V PVC JACKET
2	1-1/2" THRU WITH 3Ø 300V ACB AND 2Ø PARALLEL
3	1" RIGID WITH 3Ø 300V ACB
4	1" RIGID
5	1/2" RIGID

DATE: \_\_\_\_\_ REVISION: \_\_\_\_\_

THIS DRAWING MUST NOT BE REPRODUCED, Duplicated AND LENDED FROM TO COMMENCEMENT OF WORK, ALL RIGHTS AND OBLIGATIONS TO BE REPORTED IMMEDIATELY TO THE ARCHITECT.

NO PART OF THIS DRAWING IS TO BE REPRODUCED OR TRANSMITTED IN ANY FORM OR BY ANY MEANS, ELECTRONIC OR MECHANICAL, INCLUDING PHOTOCOPYING, RECORDING, OR BY ANY INFORMATION STORAGE AND RETRIEVAL SYSTEM, WITHOUT THE WRITTEN PERMISSION OF THE ARCHITECT.

THIS DRAWING IS THE SOLE PROPERTY OF THE ARCHITECTS AND IS TO BE RETURNED TO THE ARCHITECTS UPON COMPLETION OF THE PROJECT. IN THE EVENT OF THE ARCHITECTS' DEATH OR INABILITY TO PRACTICE, THIS DRAWING IS TO BE RETURNED TO THE ARCHITECTS.

**NUMBER TEN ARCHITECTURAL GROUP**  
ARCHITECTS ENGINEERS PLANNERS  
80 DONALD STREET NORTH WINNIPEG CANADA (204) 942-0001

ASSOCIATE ARCHITECT  
CONSULTING ENGINEER

**a.e. burstein & associates**  
700-228 notre dame ave., winnipeg 2, manitoba

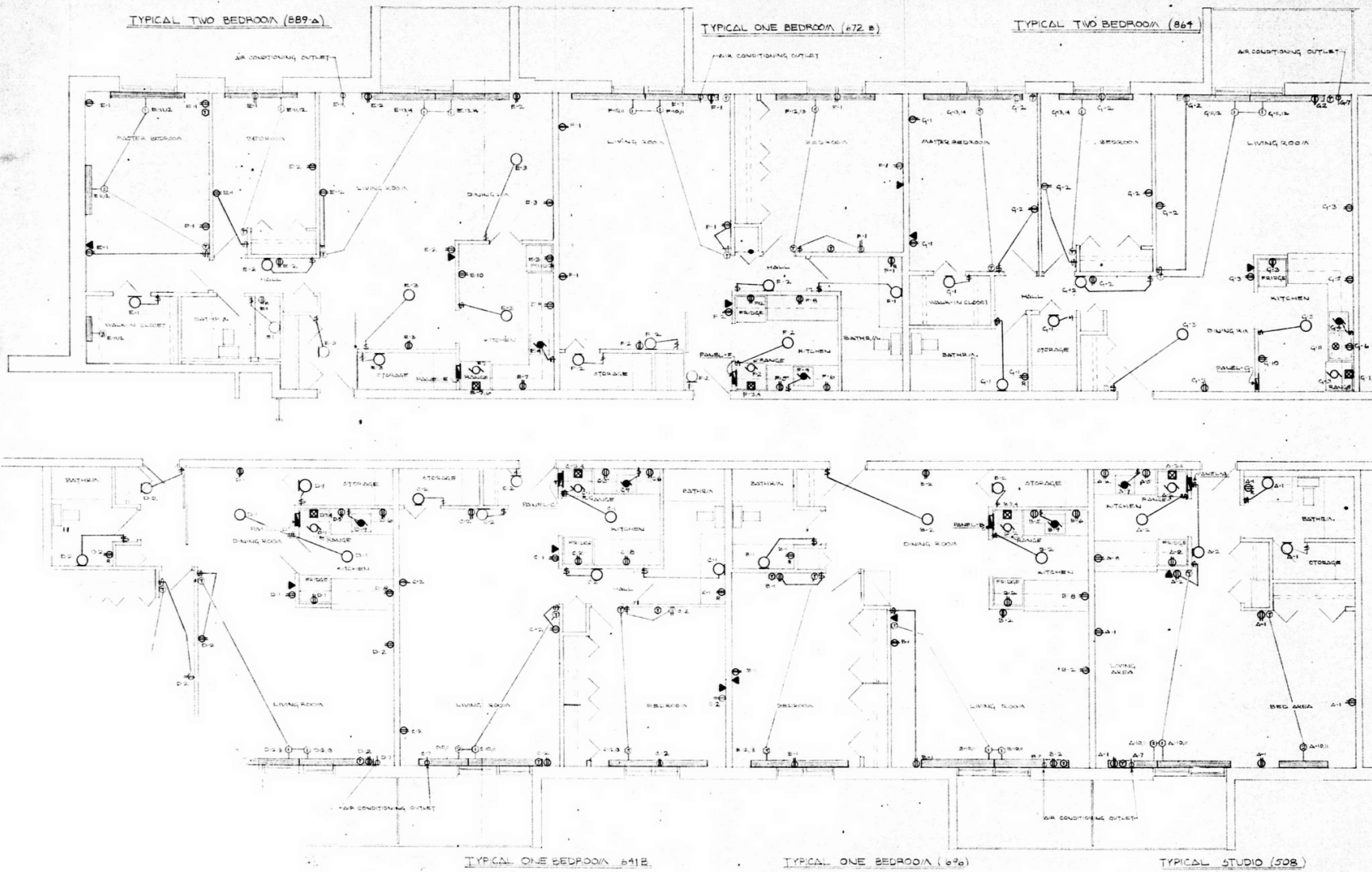


PROJECT  
**KENASTON ESTATES Phase 1**  
GARDEN APARTMENTS  
KENASTON BLVD & GRAND AVE  
OWNER  
RESOLUTION PROPERTIES LTD  
DEVELOPER  
LAWRENCE PROPERTIES LTD  
WINNIPEG MANITOBA

SHEET TITLE  
**ELECTRICAL**  
**SITE PLAN #**  
**MAIN DISTRIBUTION**  
SCALE: 3/8" = 1'-0"

DRAWN BY: \_\_\_\_\_ DATE: \_\_\_\_\_ SHEET NO.: 51 of 57

CHECKED BY: \_\_\_\_\_ PROJECT NO.: 7129 FILE NO.: \_\_\_\_\_



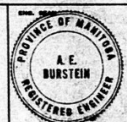
NOTES:  
 1. SEE SCALE DRAWING FOR HEATING ON THIS FLOOR.  
 2. SEE SCALE DRAWING FOR WATER WITH DISHWASHER. CONNECT TO SINK & HELLT ON SINK PANEL WITH ISAPP/POLE BREAKER.

DATE	BY	REVISION

THE DRAWING MUST NOT BE SCALED.  
 THE GENERAL CONTRACTOR SHALL VERIFY ALL DIMENSIONS, LEVELS AND LEVELS PRIOR TO COMMENCEMENT OF WORK. ALL DIMENSIONS AND LEVELS TO BE SHOWN ON THE DRAWING.  
 THE ARCHITECT IS NOT RESPONSIBLE FOR THE CONSTRUCTION OF THIS DRAWING. THE ARCHITECT IS NOT RESPONSIBLE FOR THE CONSTRUCTION OF THIS DRAWING.  
 THIS DRAWING IS THE SOLE PROPERTY OF THE ARCHITECTS AND CAN BE REPRODUCED ONLY WITH THE PERMISSION OF THE ARCHITECTS. IN WHICH CASE THE REPRODUCER MUST BEAR THEIR NAME AS ARCHITECTS.

**NUMBER TEN ARCHITECTURAL GROUP**  
 ARCHITECTS ENGINEERS PLANNERS  
 2000 BROADVIEW AVENUE WILLOWDALE ONTARIO M2H 3B7

ASSOCIATE ARCHITECT  
 CONSULTING ENGINEER  
**A.E. BURSTEIN & ASSOCIATES**  
 700-228 ROYAL CANADIAN AVENUE, WILLOWDALE, ONTARIO



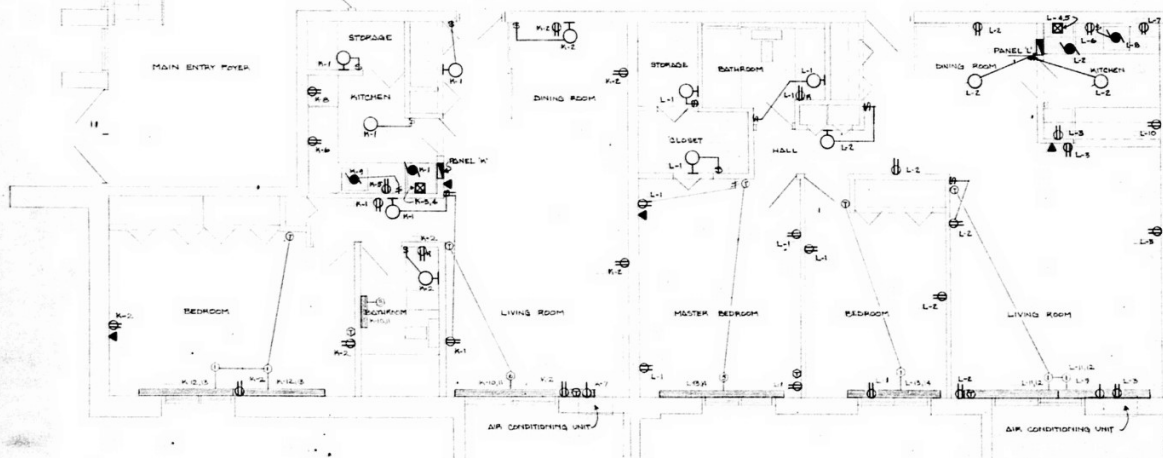
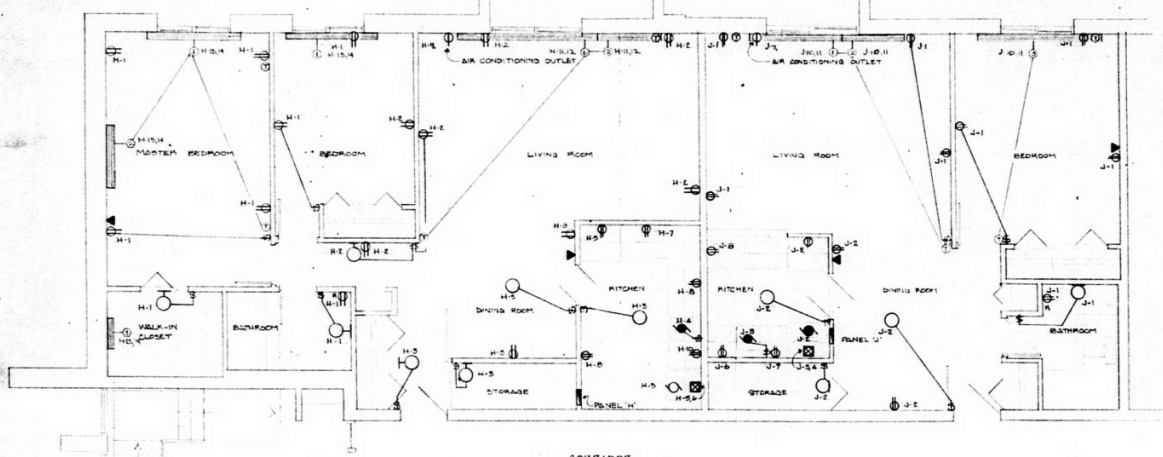
PROJECT  
 KENASTON ESTATES PHASE 1  
 GARDEN APARTMENTS  
 KENASTON BLVD & GRANT AVE.  
 OWNER  
 KENASTON PROPERTIES LTD.  
 DEVELOPER  
 LAKEVIEW PROPERTIES LTD.  
 WINNIPEG MANITOBA

SHEET TITLE  
 TYPICAL SUITE  
 ELECTRICAL LAYOUT  
 SCALE - 1/4" = 1'-0"

DRAWN BY	DATE	SHEET NO.
		E-2 OF 5
CHECKED BY	PROJECT NO.	FILE NO.
	720	

TYPICAL TWO BEDROOM 899 B

TYPICAL ONE BEDROOM 641 A



TYPICAL ONE BEDROOM 666

TYPICAL TWO BEDROOM 810

NO.	MANUFACTURER	CAT. NO.	WATTAGE	VOLTS/PHASE	REMARKS
1	CHROMALOX	83-7416	1500	240V/1P	CONTROLLED BY WALL STAT.
2	"	83-5210	1500	"	"
3	"	83-240510	500	"	C/W B.I.T.
4	"	83-2917	1740	"	CONTROLLED BY WALL STAT.
5	"	83-3620	2000	"	"
6	"	83-11025	2500	"	"
7	"	83-7415D	1500	"	C/W B.I.T. (BATHROOM)
8	"	83-3827B	2000	"	"
9	"	83-1840	4000	"	"

**SUITE TYPE 'J'**

LIGHTS + RECEPTS	2.0W	2	10	1.0W KITCHEN
LIGHTS + RECEPTS	2.0W	2	10	2.0W HEATERS
RANGE	6.0W	3	15	"
"	"	4	20	SPACE
KITCHEN	1.0W	5	25	"
AIR COND. UNIT	1600W	7	35	"
KITCHEN	1.0W	8	40	"

**SUITE TYPE 'A'**

LIGHTS + RECEPTS	4.0W	2	10	BOOM GARBURATOR
LIGHTS + RECEPTS	4.0W	2	10	2.0W HEATERS
RANGE	6.0W	3	15	"
"	"	4	20	SPACE
KITCHEN	1.0W	5	25	"
AIR COND. UNIT	1600W	7	35	"
KITCHEN	1.0W	8	40	"

**SUITE TYPE 'B'**

LIGHTS + RECEPTS	2.0W	2	10	BOOM GARBURATOR
LIGHTS + RECEPTS	2.0W	2	10	2.0W HEATERS
RANGE	6.0W	3	15	"
"	"	4	20	SPACE
KITCHEN	1.0W	5	25	"
AIR COND. UNIT	1600W	7	35	"
KITCHEN	1.0W	8	40	"

**SUITE TYPE 'C'**

LIGHTS + RECEPTS	2.0W	2	10	BOOM GARBURATOR
LIGHTS + RECEPTS	2.0W	2	10	2.0W HEATERS
RANGE	6.0W	3	15	"
"	"	4	20	SPACE
KITCHEN	1.0W	5	25	"
AIR COND. UNIT	1600W	7	35	"
KITCHEN	1.0W	8	40	"

**SUITE TYPE 'D'**

LIGHTS + RECEPTS	2.0W	2	10	BOOM GARBURATOR
LIGHTS + RECEPTS	2.0W	2	10	2.0W HEATERS
RANGE	6.0W	3	15	"
"	"	4	20	SPACE
KITCHEN	1.0W	5	25	"
AIR COND. UNIT	1600W	7	35	"
KITCHEN	1.0W	8	40	"

**SUITE TYPE 'E'**

LIGHTS + RECEPTS	4.0W	2	10	1600W AIR COND. UNIT
LIGHTS + RECEPTS	1.0W	2	10	1.0W KITCHEN
LIGHTS + RECEPTS	1.0W	2	10	4.0W HEATERS
GARBURATOR	6.0W	3	15	"
RANGE	6.0W	4	20	SPACE
"	"	5	25	"
KITCHEN	1.0W	6	30	"
"	"	7	35	"
KITCHEN	1.0W	8	40	"

**SUITE TYPE 'F'**

LIGHTS + RECEPTS	2.0W	2	10	BOOM GARBURATOR
LIGHTS + RECEPTS	2.0W	2	10	2.0W HEATERS
RANGE	6.0W	3	15	"
"	"	4	20	SPACE
KITCHEN	1.0W	5	25	"
AIR COND. UNIT	1600W	7	35	"
KITCHEN	1.0W	8	40	"

**SUITE TYPE 'G'**

LIGHTS + RECEPTS	1.0W	2	10	1600W AIR COND. UNIT
LIGHTS + RECEPTS	1.0W	2	10	1.0W KITCHEN
LIGHTS + RECEPTS	1.0W	2	10	4.0W HEATERS
GARBURATOR	6.0W	3	15	"
RANGE	6.0W	4	20	SPACE
"	"	5	25	"
KITCHEN	1.0W	6	30	"
"	"	7	35	"
KITCHEN	1.0W	8	40	"

**SUITE TYPE 'H'**

LIGHTS + RECEPTS	2.0W	2	10	1600W AIR COND. UNIT
LIGHTS + RECEPTS	2.0W	2	10	1.0W KITCHEN
LIGHTS + RECEPTS	2.0W	2	10	4.0W HEATERS
GARBURATOR	6.0W	3	15	"
RANGE	6.0W	4	20	SPACE
"	"	5	25	"
KITCHEN	1.0W	6	30	"
"	"	7	35	"
KITCHEN	1.0W	8	40	"

**SUITE TYPE 'K'**

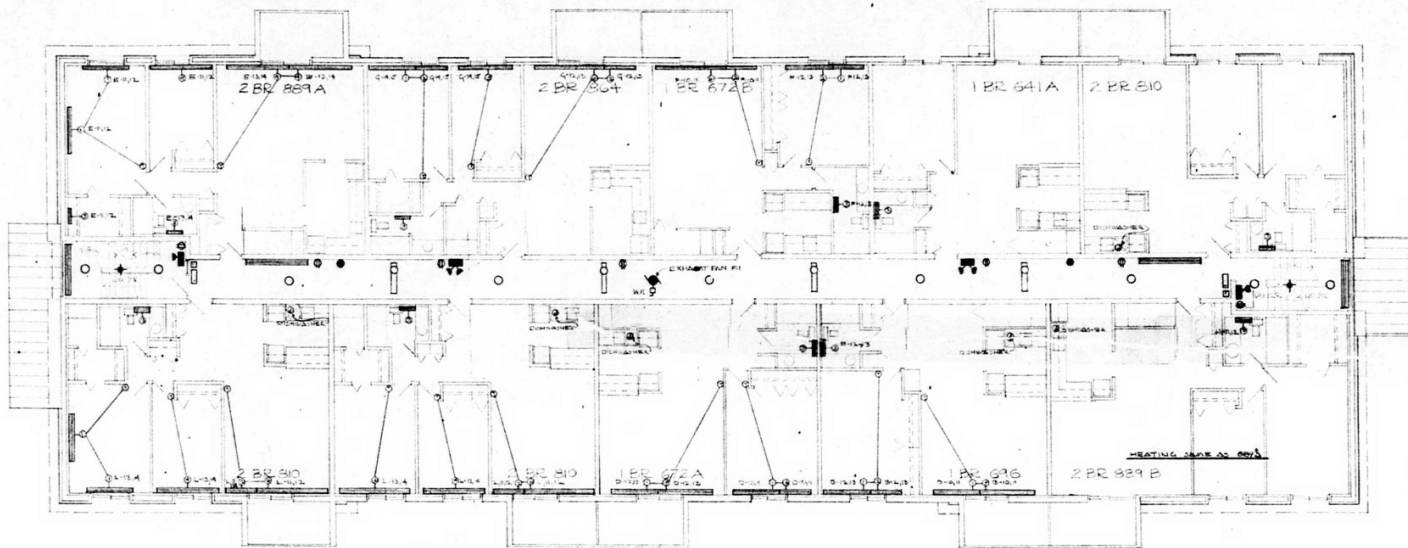
LIGHTS + RECEPTS	4.0W	2	10	BOOM GARBURATOR
LIGHTS + RECEPTS	4.0W	2	10	2.0W HEATERS
RANGE	6.0W	3	15	"
"	"	4	20	SPACE
KITCHEN	1.0W	5	25	"
AIR COND. UNIT	1600W	7	35	"
KITCHEN	1.0W	8	40	"

**SUITE TYPE 'L'**

LIGHTS + RECEPTS	2.0W	2	10	1600W AIR COND. UNIT
LIGHTS + RECEPTS	2.0W	2	10	1.0W KITCHEN
LIGHTS + RECEPTS	2.0W	2	10	4.0W HEATERS
RANGE	6.0W	3	15	"
"	"	4	20	SPACE
KITCHEN	1.0W	5	25	"
GARBURATOR	6.0W	6	30	"
"	"	7	35	"
KITCHEN	1.0W	8	40	"

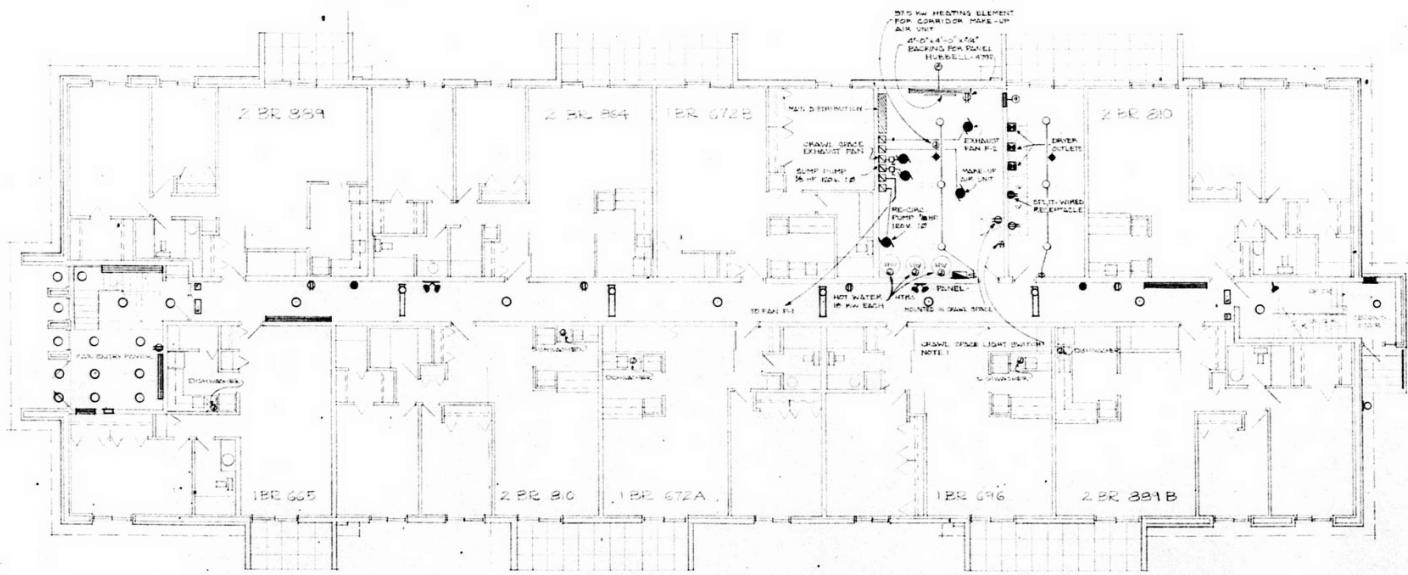
NOTES:  
1. CONSULT DRAWINGS TO APPLICABLE SUITE MANUALS.  
2. REFER TO SHEETS 899 B & 641 A FOR SUITES WITH DISHWASHERS.

DATE	NO.	REVISION
THE DRAWING MUST NOT BE SCALED.		
4. THE GENERAL CONTRACTOR SHALL VERIFY ALL DIMENSIONS, DATUMS AND LEVELS PRIOR TO COMMENCEMENT OF WORK. ALL DIMENSIONS AND CONDITIONS TO BE SHOWN UNLESS NOTED TO THE CONTRARY.		
5. VARIATIONS & MODIFICATIONS TO WORK SHOWN ON THESE DRAWINGS SHALL NOT BE CARRIED OUT WITHOUT WRITTEN PERMISSION FROM THE ARCHITECT.		
6. THIS DRAWING IS THE EXCLUSIVE PROPERTY OF THE ARCHITECTS AND CAN BE REPRODUCED ONLY WITH THE PERMISSION OF THE ARCHITECTS, IN WHICH CASE THE REPRODUCTION MUST BEAR THIS NAME AS ARCHITECTS.		
<b>NUMBER TEN ARCHITECTURAL GROUP</b> ARCHITECTS ENGINEERS PLANNERS 82 DONALD STREET NORTH WINNIPEG CANADA (204) 942-0001		
ASSOCIATE ARCHITECT		
CONSULTING ENGINEER		
 <b>A.E. WURSTEIN</b> 700-228 Notre Dame Ave., Winnipeg 2, Manitoba		
PROJECT		
KENASTON ESTATES PHASE 1 GARDEN APARTMENTS KENASTON BLVD + GRANT AVE OWNER KENASTON PROPERTIES LTD. DEVELOPER LAKEVIEW PROPERTIES LTD. WINNIPEG, MANITOBA		
SHEET TITLE		
TYPICAL SUITE ELECTRICAL LAYOUT SCALE 1/4" = 1'-0"		
DRAWN BY	DATE	SHEET NO.
CHECKED BY	PROJECT NO.	FILE NO.



SECOND & THIRD FLOOR PLAN  
 1 THIRD FLOOR HEATING LAYOUT

NOTES:  
 1 REFER TO FLOOR PLAN LAYOUT BUILDING  
 TYPE 'X' FOR CIRCUIT NO'S.



FIRST FLOOR PLAN

DATE	OR	REVISION

THE DRAWING MUST NOT BE SCALED.

1 THE GENERAL CONTRACTOR SHALL VERIFY ALL DIMENSIONS, SIZES AND LEVELS PRIOR TO COMMENCEMENT OF WORK. ALL ERRORS AND OMISSIONS TO BE REPORTED IMMEDIATELY TO THE ARCHITECT.

2 VARIATIONS & MODIFICATIONS TO WORK SHOWN ON THESE DRAWINGS SHALL NOT BE CARRIED OUT WITHOUT WRITTEN PERMISSION FROM THE ARCHITECT.

3 THIS DRAWING IS THE EXCLUSIVE PROPERTY OF THE ARCHITECTS AND IS TO BE REPRODUCED ONLY WITH THE PERMISSION OF THE ARCHITECTS. IN WHICH CASE THE REPRODUCTION MUST BEAR THEIR NAME AS ARCHITECTS.

**NUMBER TEN ARCHITECTURAL GROUP**  
 ARCHITECTS ENGINEERS PLANNERS  
 23 DONALD STREET NORTH WINNIPEG CANADA (204) 642 0001

ASSOCIATE ARCHITECT

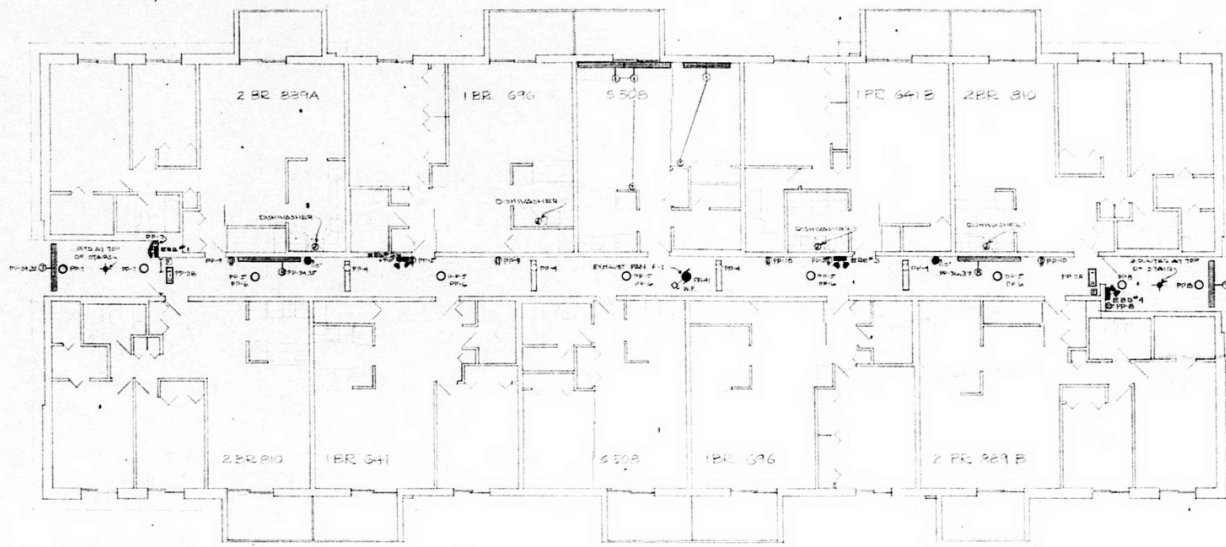
CONSULTING ENGINEER  
 s.e.burstein & associates  
 700-223 ROSE GARDEN AVE., WINNIPEG 2, MANITOBA

ARCH. SEAL

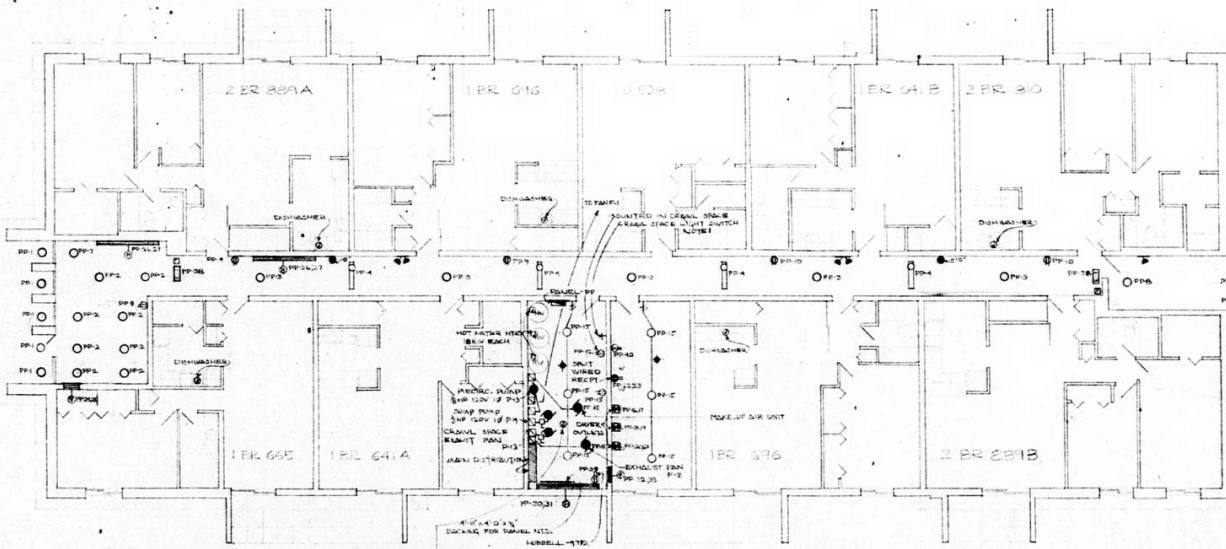
PROJECT  
 KENASTON ESTATES PHASE 1  
 GARDEN APARTMENTS  
 KENASTON BLVD + GRANT AVE.  
 OWNER: KENASTON PROPERTIES LTD.  
 DEVELOPER: LAKEVIEW PROPERTIES LTD  
 WINNIPEG, MANITOBA

SHEET TITLE  
 FLOOR PLAN  
 TYPE 'X'  
 ELECTRICAL LAYOUT  
 SCALE 1/8" = 1'-0"

DRAWN BY	DATE	SHEET NO.
		E-4 of 5
CHECKED BY	PROJECT NO.	FILE NO.

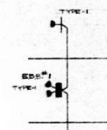


THIRD FLOOR HEATING LAYOUT &  
SECOND AND THIRD FLOOR PLAN  
SCALE 1/8" = 1'-0"



FIRST FLOOR PLAN  
SCALE 1/8" = 1'-0"

0.75 KW HEATING ELEMENT FOR CONVECTION PANEL - 1/2" AIR LIFT



SEA BATTERY BULK MANUFACTURER	
1	DUAL-UNIT
2	
3	
4	
5	

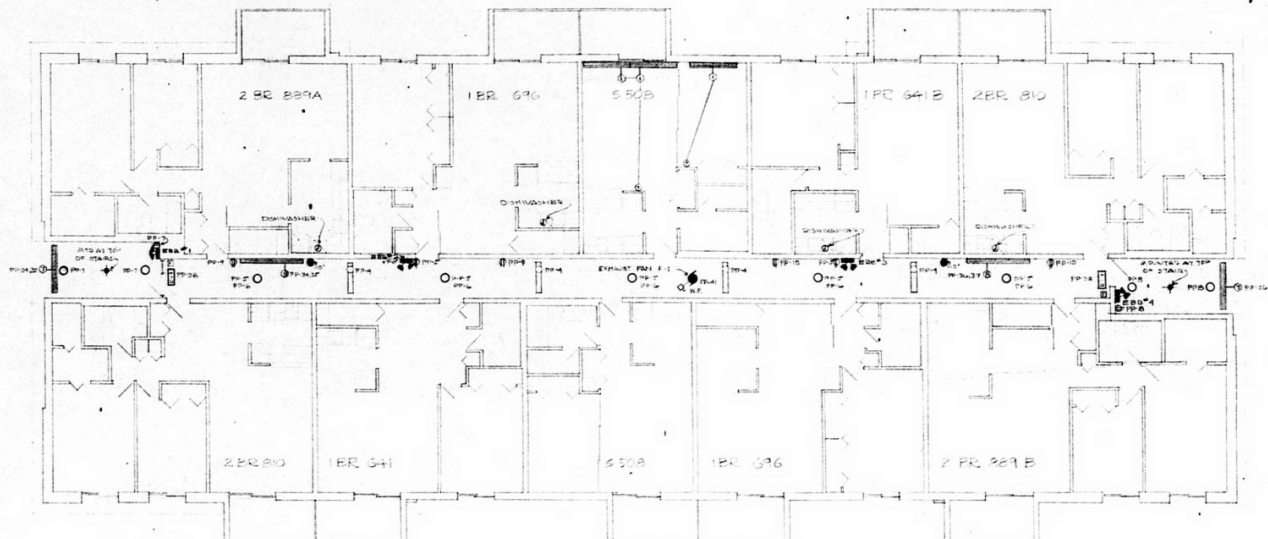
EMERGENCY

- NOTES:
1. SUPPLY & INSTALL FIVE(5) PORCELAIN LAMP HOLDERS IN CEILING SPACE EQUALLY SPACED DOWN THE CENTRE OF CEILING SPACE, CONNECT TO CIRCUIT PANEL.
  2. REFER TO DATE HEATING LAYOUTS FOR SIZES NOT IN THIS DRAWING.

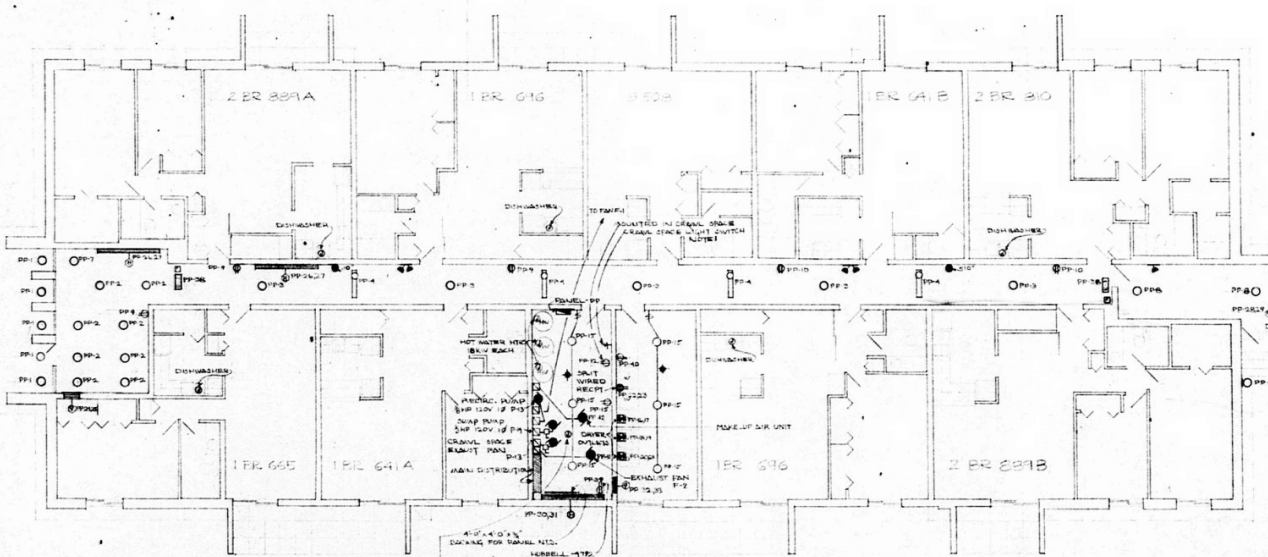
PANEL PP 100/100/10

DESCRIPTION	QTY	UNIT	MANUFACTURER
EXTERNAL LIGHTS	100	1	GENCO
INTERNAL LIGHTS	100	1	GENCO
SWITCHES	100	1	GENCO
PLUGS	100	1	GENCO
RECEPTACLES	100	1	GENCO
TRANSFORMERS	100	1	GENCO
RELAYS	100	1	GENCO
CONTACTORS	100	1	GENCO
DIODES	100	1	GENCO
TRISTERS	100	1	GENCO
SCR'S	100	1	GENCO
DIODE BRIDGES	100	1	GENCO
TRANSISTORS	100	1	GENCO
IC'S	100	1	GENCO
RESISTORS	100	1	GENCO
CAPACITORS	100	1	GENCO
INDUCTORS	100	1	GENCO
RELAYS	100	1	GENCO
CONTACTORS	100	1	GENCO
DIODE BRIDGES	100	1	GENCO
TRANSISTORS	100	1	GENCO
IC'S	100	1	GENCO
RESISTORS	100	1	GENCO
CAPACITORS	100	1	GENCO
INDUCTORS	100	1	GENCO

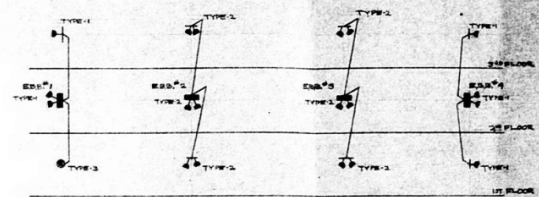
DATE	OR	BY	BYEYSON
<p>THIS DRAWING MUST NOT BE SCALED.</p> <p>THE GENERAL CONTRACTOR SHALL VERIFY ALL DIMENSIONS BEFORE AND LABELS PRIOR TO COMMENCEMENT OF WORK. ALL MISSING DIMENSIONS TO BE REPORTED IMMEDIATELY TO THE ARCHITECT.</p> <p>VARIATIONS &amp; MODIFICATIONS TO WORK SHOWN ON THESE DRAWINGS SHALL NOT BE CARRIED OUT WITHOUT WRITTEN PERMISSION FROM THE ARCHITECT.</p> <p>THIS DRAWING IS THE SOLE PROPERTY OF THE ARCHITECT AND CAN BE REPRODUCED ONLY WITH THE PERMISSION OF THE ARCHITECT. IN SUCH CASE THE REPRODUCER MUST SHOW THEIR NAME AS ARCHITECT.</p>			
<p><b>NUMBER TEN ARCHITECTURAL GROUP</b> ARCHITECTS ENGINEERS PLANNERS 25 DONALD STREET NORTH WINDSOR CANADA (504) 642 0000</p>			
<p>ASSOCIATE ARCHITECT</p>			
<p>CONSULTING ENGINEER</p>			
<p><b>A. E. BURSTEIN &amp; ASSOCIATES</b> 700-225 N. GARDEN AVE., WINDSOR, S. MICHIGAN</p>			
<p>ARCH. SEAL</p>			
<p>PROJECT</p> <p>KENASTON ESTATES PHASE I GARDENS APARTMENTS KENASTON 5104 GRAFT AVE. CHURCH KENASTON PROPERTIES LTD. DEVELOPER LANEVIEW PROPERTIES LTD. MANAGER</p>			
<p>SHEET TITLE</p> <p>FLOOR PLAN TYPE "Z" ELECTRICAL LAYOUT SCALE 3/4" = 1'-0"</p>			
DRAWN BY		DATE	SHEET NO.
CHECKED BY		PROJECT NO.	PAGE NO.



THIRD FLOOR HEATING LAYOUT &  
SECOND AND THIRD FLOOR PLAN  
SCALE 1/8" = 1'-0"



FIRST FLOOR PLAN  
SCALE 1/8" = 1'-0"



E.A. BATTERY BANK LEGEND		
1	RAVENEER	DATE 1
2	QUALITY	DATE 2
3	ALA-2012	DATE 3
4	ALA-2012	DATE 4

E.A. LIGHTING FIXTURE LIST		
1	QUALITY	DATE 1
2	ALA-2012	DATE 2
3	ALA-2012	DATE 3
4	ALA-2012	DATE 4

EMERGENCY LIGHTING RISER DIAGRAM  
(SEEING A 200-AMP)

NOTES:  
1. SUPPLY 5 (NOMINAL) PORELAN LAMP HOLDERS IN 1/2" DIA. SINKS INSTALLED IN THE CENTER OF CORRIDOR SPACE. CONNECT TO CIRCUIT PP-11.  
2. REFER TO DATE HEATING LAYOUT FOR SUITES NOT ON THIS DRAWING.

PANEL PP		
1	GENERAL LIGHTS	TYPE 1
2	STAIR LIGHTS	TYPE 2
3	STAIR LIGHTS	TYPE 3
4	STAIR LIGHTS	TYPE 4
5	STAIR LIGHTS	TYPE 5
6	STAIR LIGHTS	TYPE 6
7	STAIR LIGHTS	TYPE 7
8	STAIR LIGHTS	TYPE 8
9	STAIR LIGHTS	TYPE 9
10	STAIR LIGHTS	TYPE 10
11	STAIR LIGHTS	TYPE 11
12	STAIR LIGHTS	TYPE 12
13	STAIR LIGHTS	TYPE 13
14	STAIR LIGHTS	TYPE 14
15	STAIR LIGHTS	TYPE 15
16	STAIR LIGHTS	TYPE 16
17	STAIR LIGHTS	TYPE 17
18	STAIR LIGHTS	TYPE 18
19	STAIR LIGHTS	TYPE 19
20	STAIR LIGHTS	TYPE 20
21	STAIR LIGHTS	TYPE 21
22	STAIR LIGHTS	TYPE 22
23	STAIR LIGHTS	TYPE 23
24	STAIR LIGHTS	TYPE 24
25	STAIR LIGHTS	TYPE 25
26	STAIR LIGHTS	TYPE 26
27	STAIR LIGHTS	TYPE 27
28	STAIR LIGHTS	TYPE 28
29	STAIR LIGHTS	TYPE 29
30	STAIR LIGHTS	TYPE 30
31	STAIR LIGHTS	TYPE 31
32	STAIR LIGHTS	TYPE 32
33	STAIR LIGHTS	TYPE 33
34	STAIR LIGHTS	TYPE 34
35	STAIR LIGHTS	TYPE 35
36	STAIR LIGHTS	TYPE 36
37	STAIR LIGHTS	TYPE 37
38	STAIR LIGHTS	TYPE 38
39	STAIR LIGHTS	TYPE 39
40	STAIR LIGHTS	TYPE 40
41	STAIR LIGHTS	TYPE 41
42	STAIR LIGHTS	TYPE 42
43	STAIR LIGHTS	TYPE 43
44	STAIR LIGHTS	TYPE 44
45	STAIR LIGHTS	TYPE 45
46	STAIR LIGHTS	TYPE 46
47	STAIR LIGHTS	TYPE 47
48	STAIR LIGHTS	TYPE 48
49	STAIR LIGHTS	TYPE 49
50	STAIR LIGHTS	TYPE 50
51	STAIR LIGHTS	TYPE 51
52	STAIR LIGHTS	TYPE 52
53	STAIR LIGHTS	TYPE 53
54	STAIR LIGHTS	TYPE 54
55	STAIR LIGHTS	TYPE 55
56	STAIR LIGHTS	TYPE 56
57	STAIR LIGHTS	TYPE 57
58	STAIR LIGHTS	TYPE 58
59	STAIR LIGHTS	TYPE 59
60	STAIR LIGHTS	TYPE 60
61	STAIR LIGHTS	TYPE 61
62	STAIR LIGHTS	TYPE 62
63	STAIR LIGHTS	TYPE 63
64	STAIR LIGHTS	TYPE 64
65	STAIR LIGHTS	TYPE 65
66	STAIR LIGHTS	TYPE 66
67	STAIR LIGHTS	TYPE 67
68	STAIR LIGHTS	TYPE 68
69	STAIR LIGHTS	TYPE 69
70	STAIR LIGHTS	TYPE 70
71	STAIR LIGHTS	TYPE 71
72	STAIR LIGHTS	TYPE 72
73	STAIR LIGHTS	TYPE 73
74	STAIR LIGHTS	TYPE 74
75	STAIR LIGHTS	TYPE 75
76	STAIR LIGHTS	TYPE 76
77	STAIR LIGHTS	TYPE 77
78	STAIR LIGHTS	TYPE 78
79	STAIR LIGHTS	TYPE 79
80	STAIR LIGHTS	TYPE 80
81	STAIR LIGHTS	TYPE 81
82	STAIR LIGHTS	TYPE 82
83	STAIR LIGHTS	TYPE 83
84	STAIR LIGHTS	TYPE 84
85	STAIR LIGHTS	TYPE 85
86	STAIR LIGHTS	TYPE 86
87	STAIR LIGHTS	TYPE 87
88	STAIR LIGHTS	TYPE 88
89	STAIR LIGHTS	TYPE 89
90	STAIR LIGHTS	TYPE 90
91	STAIR LIGHTS	TYPE 91
92	STAIR LIGHTS	TYPE 92
93	STAIR LIGHTS	TYPE 93
94	STAIR LIGHTS	TYPE 94
95	STAIR LIGHTS	TYPE 95
96	STAIR LIGHTS	TYPE 96
97	STAIR LIGHTS	TYPE 97
98	STAIR LIGHTS	TYPE 98
99	STAIR LIGHTS	TYPE 99
100	STAIR LIGHTS	TYPE 100

DATE: / /

REVISION:

THIS DRAWING MUST NOT BE REPRODUCED OR COPIED WITHOUT THE WRITTEN PERMISSION OF THE ARCHITECT. ALL RIGHTS ARE RESERVED TO THE ARCHITECT.

THE ARCHITECT'S LIABILITY IS LIMITED TO THE PROFESSIONAL SERVICES PROVIDED BY THE ARCHITECT. THE ARCHITECT DOES NOT WARRANT OR GUARANTEE THE ACCURACY OF THE INFORMATION PROVIDED BY THE CLIENT OR OTHER SOURCES.

THIS DRAWING IS THE SOLE PROPERTY OF THE ARCHITECT AND CAN BE REPRODUCED ONLY WITH THE PERMISSION OF THE ARCHITECT. IN WITNESS WHEREOF, THE ARCHITECT HAS HEREON SET HIS HAND AND SEAL AT TORONTO, CANADA, ON / /

**NUMBER TEN ARCHITECTURAL GROUP**  
ARCHITECTS ENGINEERS PLANNERS  
10 DONALD STREET NORTH, WINDSOR, CANADA (519) 253-1000

ASSOCIATE ARCHITECT:

CONSULTING ENGINEER:  
**A.E. BURSTEIN & ASSOCIATES**  
730-228 ROYAL AVENUE, WINDSOR, ONTARIO

ARCH. SEAL: A.E. BURSTEIN REGISTERED ENGINEER

PROJECT:  
KENNEDY ESTATES PHASE I  
GARDEN APARTMENTS  
1000 KENNEDY STREET, WINDSOR, ONTARIO  
OWNER:  
KENNEDY PROPERTIES LTD.  
DEVELOPER:  
LAMBTON PROPERTIES LTD.  
WINDSOR, ONTARIO

SHEET TITLE:  
FLOOR PLAN  
TYPE "Z"  
ELECTRICAL LAYOUT  
SCALE 8" = 1'-0"

DRAWN BY: DATE: SHEET NO. 1 OF 1

CHECKED BY: PROJECT NO. 710 PREP. NO.