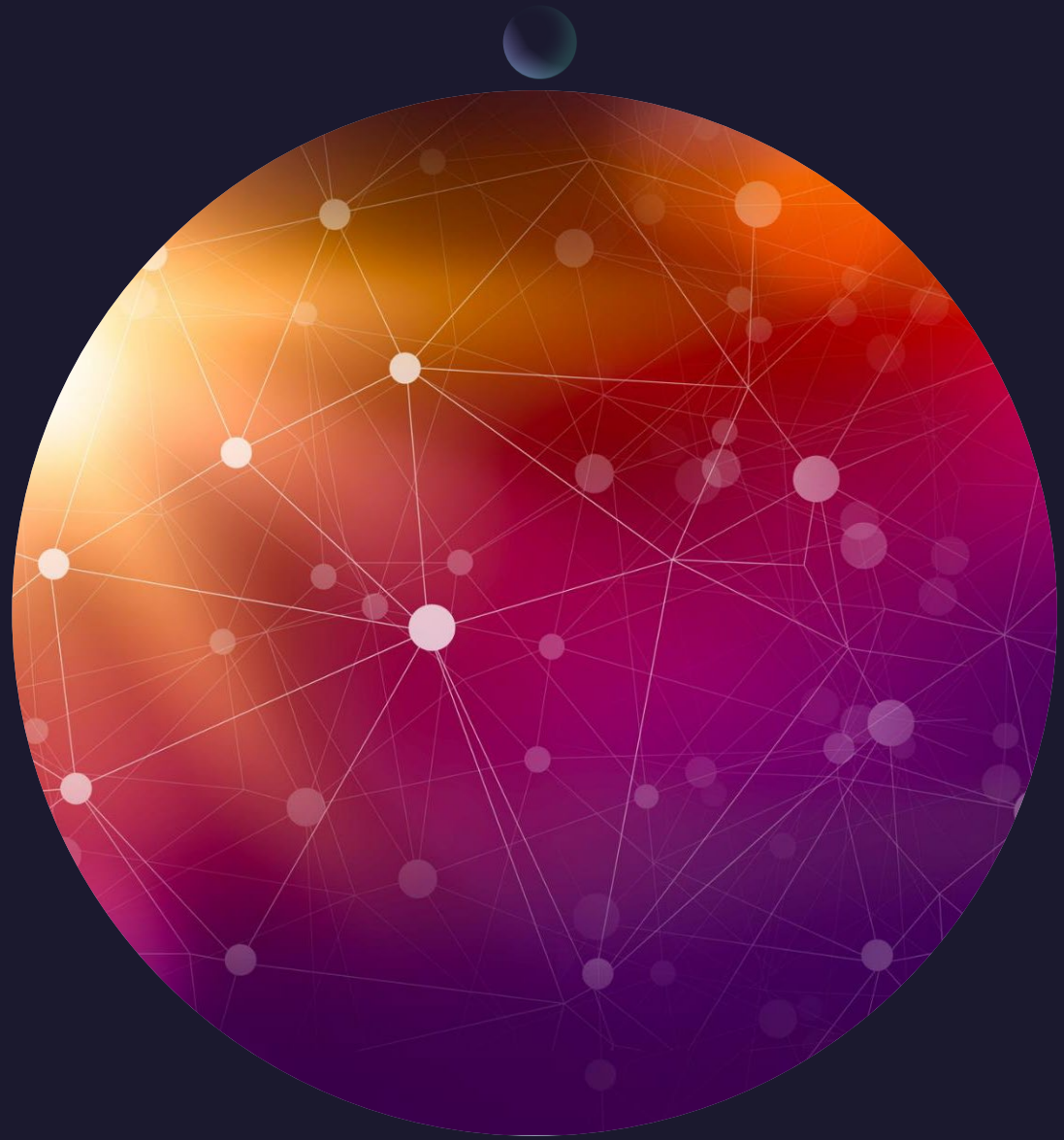


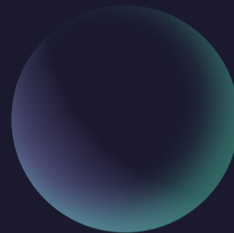
Beyond the Matrix

*Episode 1:
“Time Travel”*



*Every great dream
begins with a dreamer.
Always remember,
you have within you the strength,
the patience,
and the passion
to reach for the stars
to change the world.*

--Harriet Tubman



The way to get
started is to quit
talking and
begin doing.

Walt Disney



“Just Do It”

Nike



Challenge:

*“Demonstrate the truth of the prior statements using the facts, events, and circumstances from the life of one living human being. Facts from that person’s life shall serve as confirmation of a
“parallel reality experience.”*

Prompts:

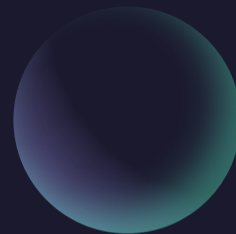
- ❖ Imagine an apparatus that would enable an Observer to “peer into” any world they perceived to be “distant” from than theirs.
- ❖ This would be similar to how scientists in the current timeline smash together sub-atomic particles to produce data from which they can make calculations and predictions.





- ❖ Now, imagine that you discover that the “distant” world being observed is the Earth.
- ❖ Next, think about an Observer standing there holding the Earth between their two fingers like that.
- ❖ Imagine yourself as: (1) an inhabitant of the Earth; or (2) an Observer who has discovered this information.

What would you do next?



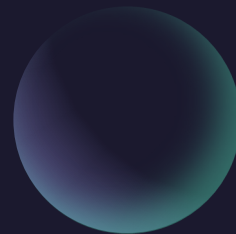
Open Contact:

the most reasonable next step



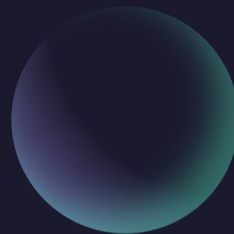
If you are human living on the Earth, is there a way for you to communicate to the Observer that you are conscious, aware, awake, and alive?

If you are an Observer, is there a way for you to communicate with the “human data subject” allegedly trapped alive inside such a tiny structure?

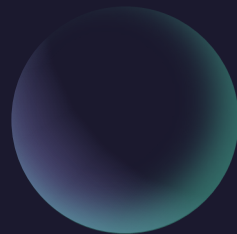


❖ In answering these questions, keep in mind the following:

- From the Observer's perspective, the existence of a planet like Earth is theoretical only. The math and formulas predict that an Earth could exist in that space. However, until now, such predictions are unconfirmed.
- From the perspective of any distant Observer, Earth could be described as “data contained within a field that contains instructions to render such data in three dimensions bounded by three parallel sides joined by four 90-degree corners on each side” (3D).



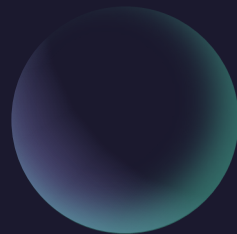
- ❖ A “quantum leap in logic” would be required in order to transition from understanding the Earth as a planet bearing conscious and intelligent life – to understanding that, in other realms – from the perspective of a distant Observer -- the Earth exists as “data on a piece of paper.”
- ❖ It is expected that the inhabitants of the Earth are unlikely to welcome this information.
- ❖ It is expected that outreach and education are required in order to hasten the transition to this truth by the masses.



ASSESSMENT:

Data and observation confirm that there are intelligent beings residing upon the “face of the Earth” who appear to be conscious, aware, awake, and alive.

- Such beings appear to be conscious of activity taking place “outside of the Earth.”
- Some humans are aware of an “outer presence.”
- Some human beings have responded in real time to “outer world prompts.”



LOGIC:

It is confirmed that the number 4 and the visual of a cube are reasonable starting points from which to begin building the logic required to open a bridge and thereafter to create a method to facilitate the required communications.

MOST RECENT CROSSOVER:

“Guardians of the Galaxy”

PARTICIPANT FEEDBACK:

“That felt like a limit for me.

I understand the message and am fine to pass it along.

*However, I would not want to live a world in which
that truth was not widely known.”*

4



Based on feedback received, general terms are as follows:

		COMMENTARY
ASSESSMENT:	Urgency Level: “Don’t Look Up”	If what we are seeing is accurate, and if what they are showing us is true, then everyone on the planet needs to know this information immediately.
TERMS:	Visual References: Arrival; Interstellar; Contact; Lucy; Everything Everywhere All At Once	Information received will be “fictionalized” – leaving the reader to decide for themselves which portions of the narrative are true.
LIMITS:	“To support open innovation that is fair, balanced, and free from undue external influence, full transparency and open access remain in place at all times. NDAs and similar constructs are rejected.”	No Member shall be “pigeon-holed” into serving in a particular role or performing a specific type of work by virtue of being held to an unreasonably restrictive standard of secrecy or confidentiality.
STATEMENT:	“We do not rely upon Earth’s land, resources, systems, or money in order to exist. For this reason, we are uninfluenced by the shifts taking place in the Earth’s environments and in the current markets.”	
TRANSPARENCY:	“All messages received are posted publicly.”	Visit carousel.one for updates.

Learn more at carousel.one

