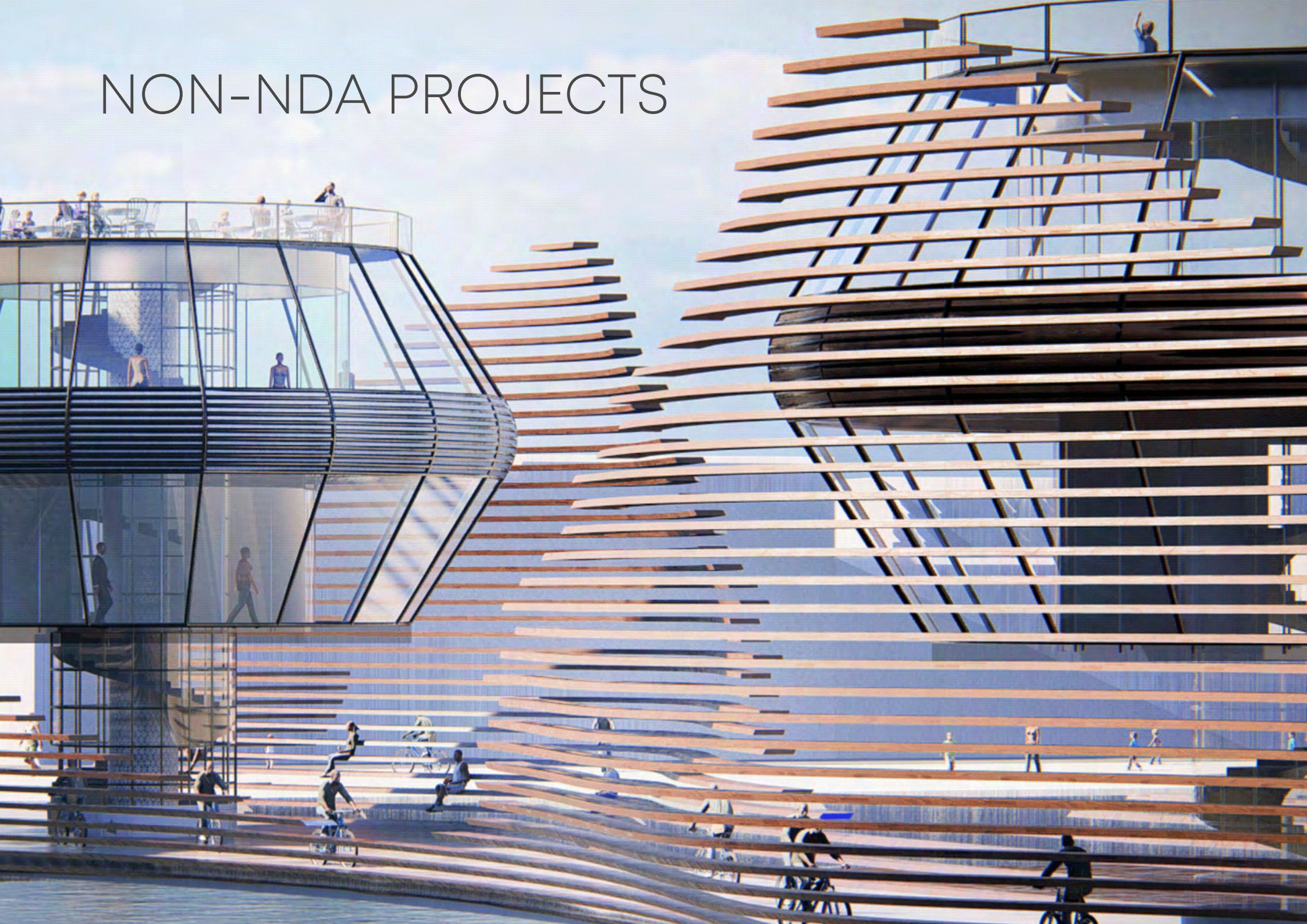


# NON-NDA PROJECTS







# THE GREEN NILE PARK

TYPE : THEME PARK

SITE : DAHAB ISLAND, CAIRO

PROJECT COORDINATES ON GOOGLE MAPS : 29.967402, 31.232464

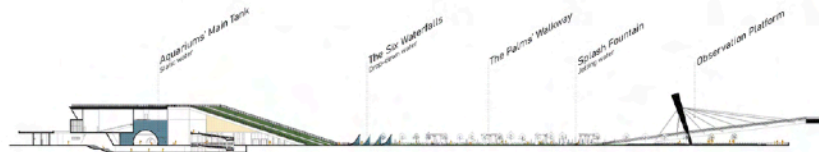




## 07 THE MAIN AXIS

- + The idea of the main axis of the project is inspired by Islamic gardens, where there is often a dominant axis from which paths branch, but often this axis ends with distinctive destinations.
- + The closed-loop system that's been added to the main axis is defined by the accessible sloped green roof from which the entire park can be viewed, and the observation platform that has a great view over the Nile.

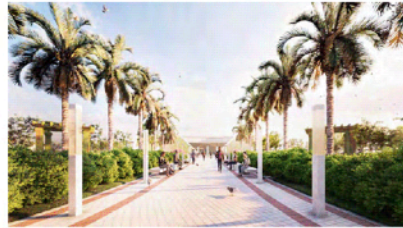
### SECTION A-A



Aquarium's Main Tank



The Palms' Walkway



The Six Waterfalls



The Splash Fountain

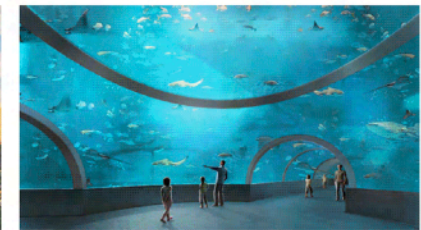
## 08 AQUARIUM



### WEST ELEVATION



The Outdoor Auditorium



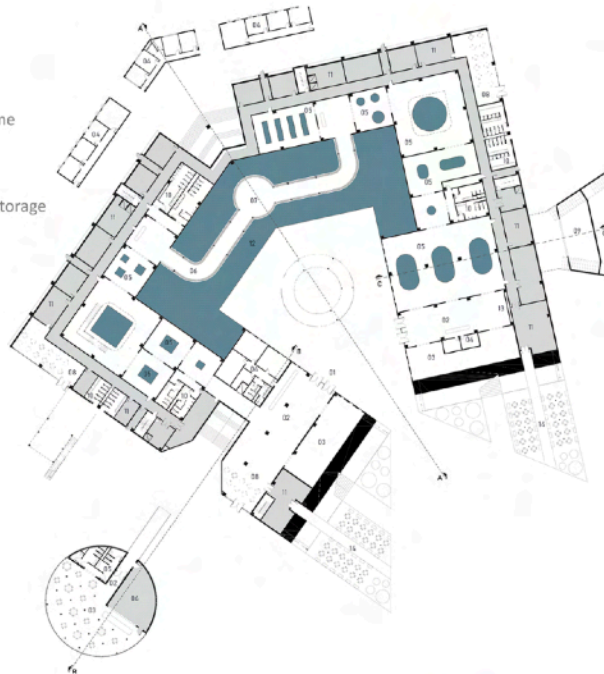
The Underwater Viewing Dome



## GROUND FLOOR

- 01 Main Entrance
- 02 Lobby
- 03 Gift shop
- 04 Admin offices
- 05 Exhibition
- 06 Tunnel
- 07 Underwater viewing dome
- 08 Cafe
- 09 Canteen
- 10 Restroom
- 11 Services, mechanical & storage
- 12 Main tank
- 13 Wall screen
- 14 Outdoor cafe

Aquarium  
 Service & Storage zone



## SECTION B-B



## FIRST FLOOR

- 01 Main Entrance
- 02 Exhibition
- 03 View place
- 04 Cinema
- 05 Tickets
- 06 Restaurant
- 07 Cafe
- 08 Classroom
- 09 Gift shop
- 10 Restroom
- 11 Services, mechanical & storage
- 12 Main tank
- 13 Outdoor auditorium

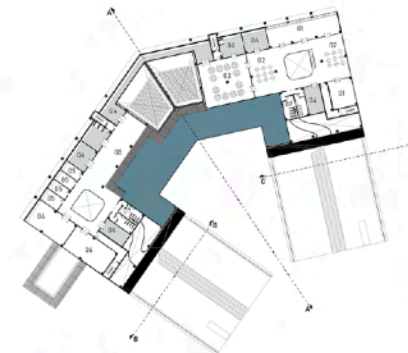
Aquarium  
 Service & Storage zone



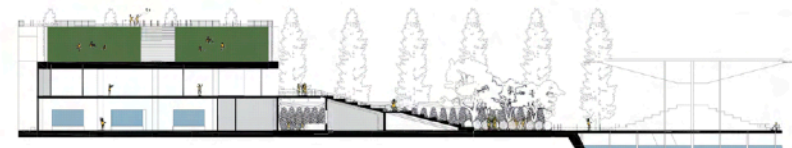
## SECOND FLOOR

- 01 Lecture hall
- 02 Cafe
- 03 Marine research
- 04 Services & storage zone
- 05 Laboratories
- 06 Meeting room
- 07 Restroom
- 08 Main tank service platform

Aquarium  
 Service & Storage zone



## SECTION C-C





## 09 GREEN OPEN SPACES



### RELAXING ZONE

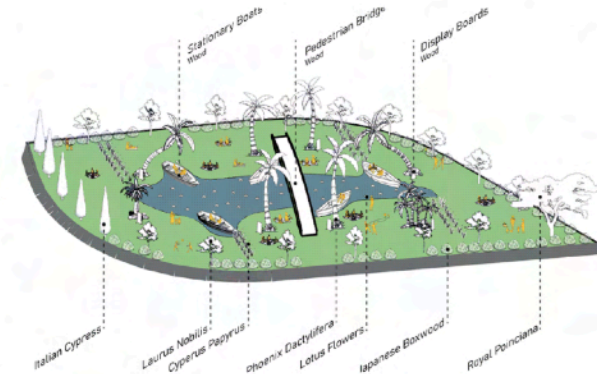
+ This space is characterized by low extended seats that help to relax and in front of it is a water element that helps the visual extension between the Nile and the user. The Acacia tortilis trees shade this space, which branches extend horizontally, helps to reduce the temperature below it.



### PLANTS CLASSROOM

+ The Nile basin is characterized by the growth of tropical plants on its banks such as palm trees and others. In Egypt, it is also distinguished by papyrus and lotus flowers.

+ This space will educate visitors on the plants' side by displaying the indigo plants, so the visitor can get acquainted with the characteristics of the plant through a display panel below each plant which contains all the data related to this plant.



Composite Wood  
water resistant  
warm color

Phoenix dactylifera  
palm tree  
max hight. 25m  
spread. 5m

Italian Cypress  
evergreen tree  
max hight. 15m

Royal Poinciana  
deciduous tree  
color of fls. red  
spread. 12m

Laurus Nobilis  
evergreen tree  
color of fls. white  
max hight. 6m

Lotus Flower  
flower  
color of fls. blue

Japanese Boxwood  
evergreen shrub  
max hight. 1.5  
spread. 1m

Cyperus Papyrus  
Rush or Sedge  
max hight. 1.5m  
spread. 1.2m





## WATER CLASSROOM

+ In this space, the visitor will get acquainted with the path the Nile water takes to reach Egypt and the various rivers and lakes that feed it.

+ Through the shading devices in the space, the user will find writings and texts engraved below these shades like the shapes and ornaments that decorate the roofs of ancient Egyptian temples.

+ After the user notices these writings above, he will lie on the ground for the best experience to receive information



Composite Wood  
water resistant  
warm color

Concrete  
smooth surface  
light color

Granite  
smooth  
light color

Sweeping Willow  
deciduous tree  
max height. 12m

Royal Poinciana  
deciduous tree  
spread. 12m

Laurus Nobilis  
evergreen tree  
color of fls. white  
max height. 6m

Fountain Grass  
Ornamental grass  
color of fls. white-  
max height. 1.5m

Japanese Boxwood  
evergreen shrub  
max height. 1.5  
spread. 1m

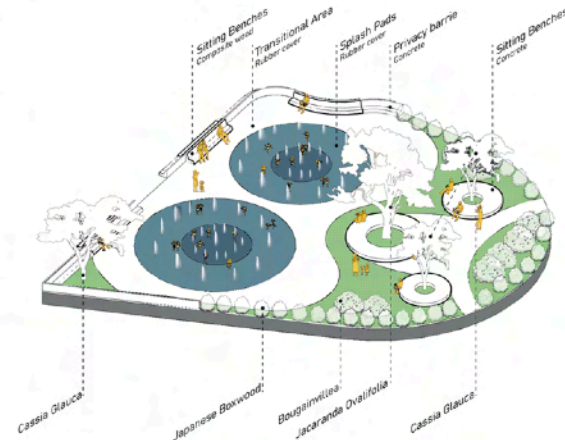


## WATER PLAYGROUND

+ To confirm the relationship between people and the Nile, attention was paid to the entertaining aspect of children through the use of the water element through the splash pads.

+ It's a recreation area for water play that has little or no standing water. This is said to eliminate the need for lifeguards or other supervision, as there is little risk of drowning.

+ Typically there are ground nozzles that spray water upwards out of the splash pad's rain deck.



Composite Wood  
water resistant  
warm color

Concrete  
smooth surface  
light color

Rubber Cover  
anti slippery  
water resistant

Japanese Boxwood  
evergreen shrub  
spread. 1m

Cassia Glauca  
deciduous tree  
color of fls. yellow  
max height. 9m  
spread. 5m

Jacaranda Ovalifolia  
deciduous tree  
color of fls. blue-violet  
max height. 18m  
spread. 10m

Bougainvillea  
evergreen vine  
spread. 2.5m



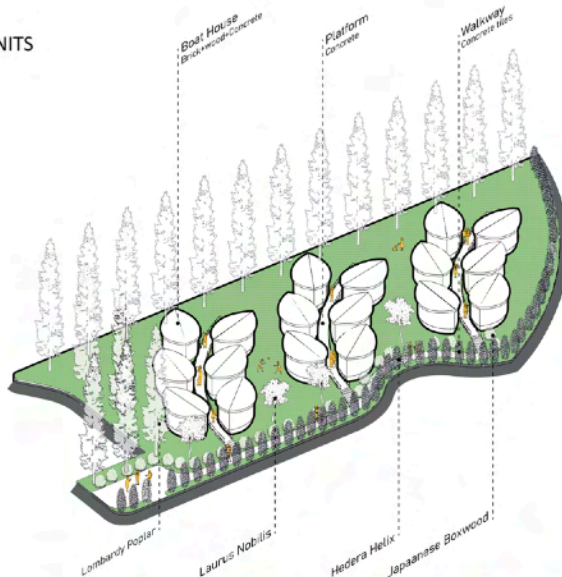
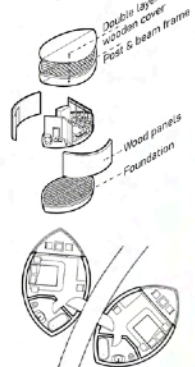


## ACCOMMODATION UNITS

+ Most of the fishermen on Dahab Island live on their boats, as they do not own a home or land on the island

+ The accommodation units are inspired by the design of fishermen boats, they are characterized by its small spaces that have been designed to the minimum requirements, so the user feels that he is having the experience of sleeping in the boat.

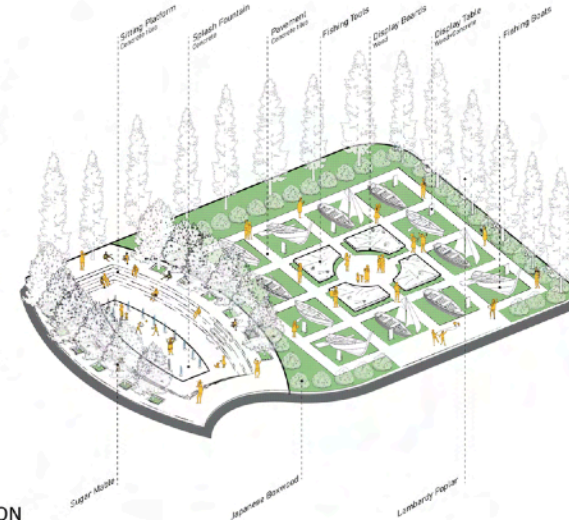
+ The accommodation units are there to accommodate visitors when holding events in the park, so a visitor can stay overnight.



## DINING ZONE

+ There is rarely a space to eat in public parks, so visitors are forced to eat on the lawn, which makes it difficult to keep the garden clean.

+ This space is specially prepared for that, where visitors can eat their food surrounded by sugar maple trees whose leaves change color to orange in the fall season, and with it the visitor's impression of the space changes with the change of seasons of the year.



## OUTDOOR EXHIBITION

+ In this outdoor exhibition, the visitor is educated in terms of the fishing tools and the different types of boats that the fishermen use daily and the way to use each of them.

+ After that, he can go on a Nile trip with one of the fishermen's' boats to live the experience practically, so his connection to the Nile increases.







# THE PUSH

CITY LINK COMPETITION

TYPE : BIKE & PEDESTRIAN BRIDGE

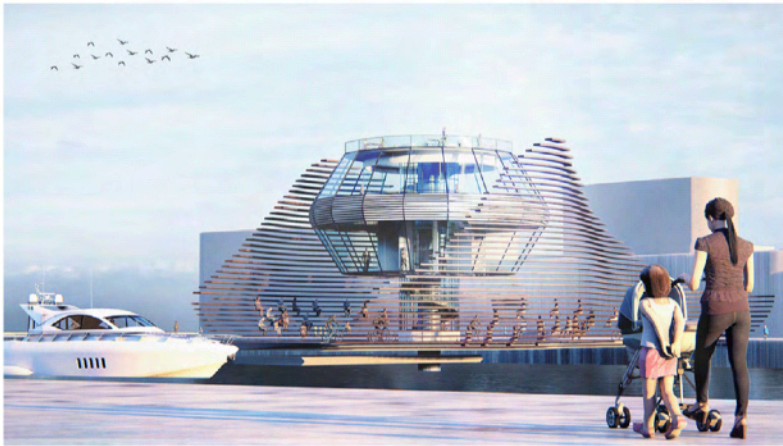
SITE : COPENHAGEN, DENMARK

PROJECT COORDINATES ON GOOGLE MAPS : 55.675873, 12.589176



## 01 BRIEF

+ The challenge here is to design a bridge for pedestrian and cycling that is not limited in its absolute function. It must utilize the bridge as a powerful public space as well as a pioneer for tourists or first-time cyclists to explore the city.

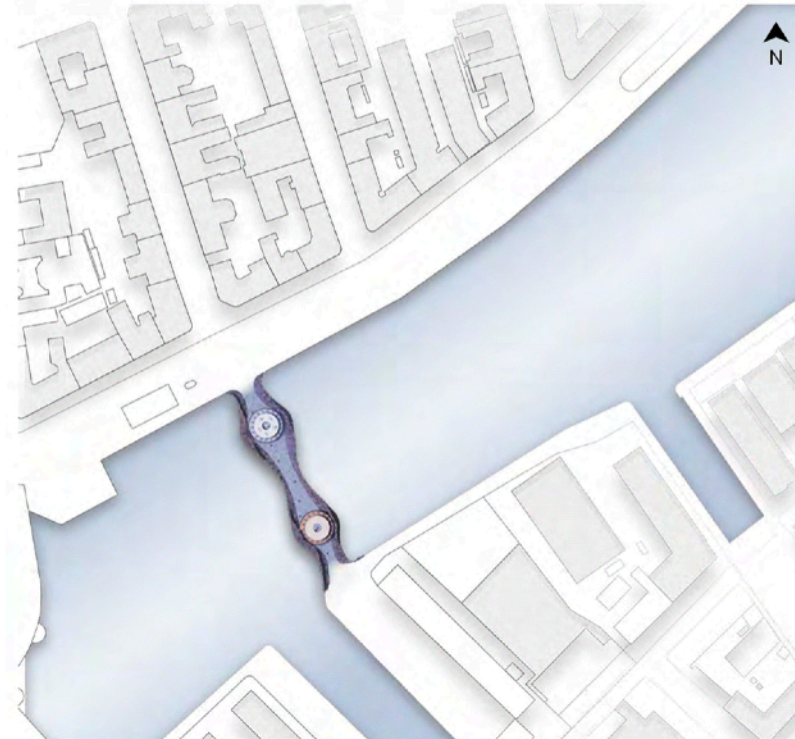


## 02 CONCEPT

+ The Push Idea is about how parents push their children for the first time they ride a Bicycle. It focuses on the physiological aspect of the first support of parents to every child. It is all about great sensation and connection in families between a father, a mother, and kids. A push from a parent is never forgotten.

## 03 LAYOUT

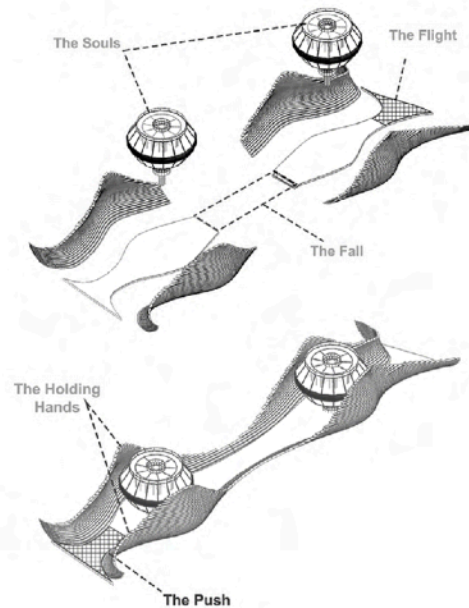
+ The bridge is designed to be a landmark within the urban context. It has a curvilinear form in a rectilinear context so that it has its unique character to become a landmark in the city of Copenhagen.





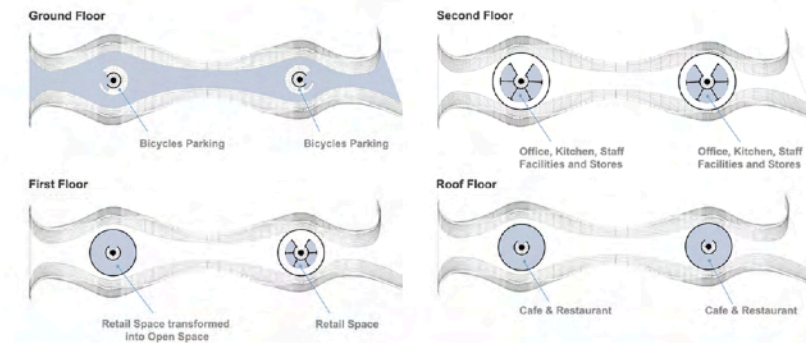
## 04 BRIDGE ELEMENTS

- + **THE PUSH:** Tight Entrance: Motivational and pushing forward.
- + **THE SOULS:** Two Hubs containing retails and services; giving sensations of safety and support.
- + **THE HOLDING HANDS:** Adjustable - Modular Dynamic Shells act as multifunctional spaces for relaxing and taking a breath; giving a sensation of Enclosure.
- + **THE FALL:** Openable part; giving a sensation of Risk.
- + **The Flight:** End of Journey as the user can proceed with his life: Exit of the bridge.



## 05 PROGRAMME

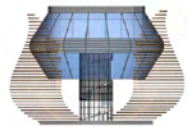
- + **GROUND FLOOR:** contains the circulation path and two spiral staircases for the hubs.
- + **FIRST FLOOR:** contains a multifunctional space that can be transferred into cafes and retail spaces.
- + **SECOND FLOOR:** contains office, kitchen, staff facilities, and retail stores.
- + **ROOF:** contains café/restaurant.



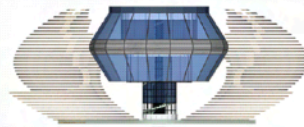


## 06 DYNAMIC SHELL

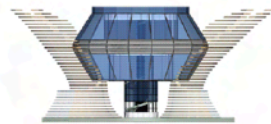
+ The holding hands' position is a dynamic shell that acts as stepped seating benches. These benches can be moved horizontally to different positions to widen the seating capacity for the bridge and also to act as a symbol for the bridge.



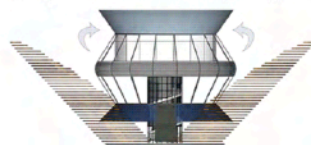
Case 01  
Closed Shell : Sitting decks



Case 02  
Partially Opened Shell : Semi enclosure,  
for night events and the feeling of inclusion



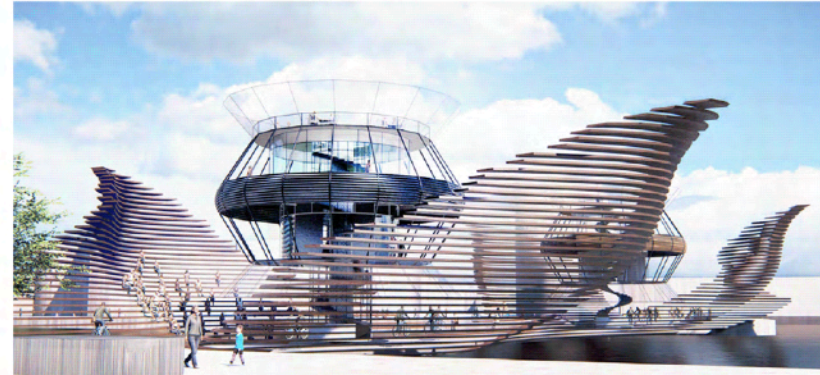
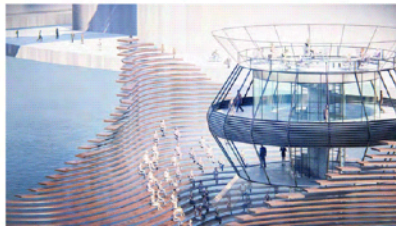
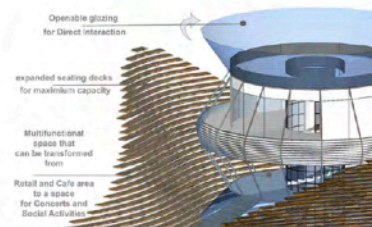
Case 03  
Fully Opened : Symbolizing Victory and Glory



Case 04  
Expanded Shell : For Concerts and Events and  
also as a Multi-functional Space for Social Interaction

## 07 EXPANDED SHELL

The holding hands can be fully expanded when needed in cases like big events and festivals. The expanded shell acts as an amphitheater that can house -for example- a big number of spectators watching a concert that's being performed by a band in the multifunctional space of the first floor.

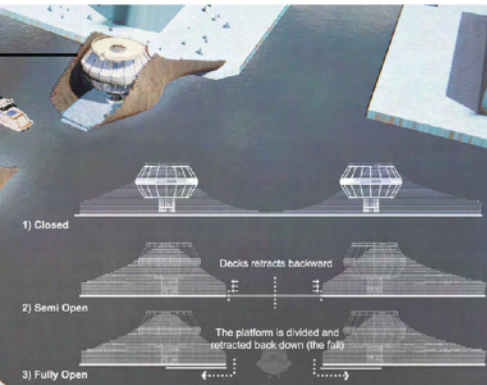


### SECTION

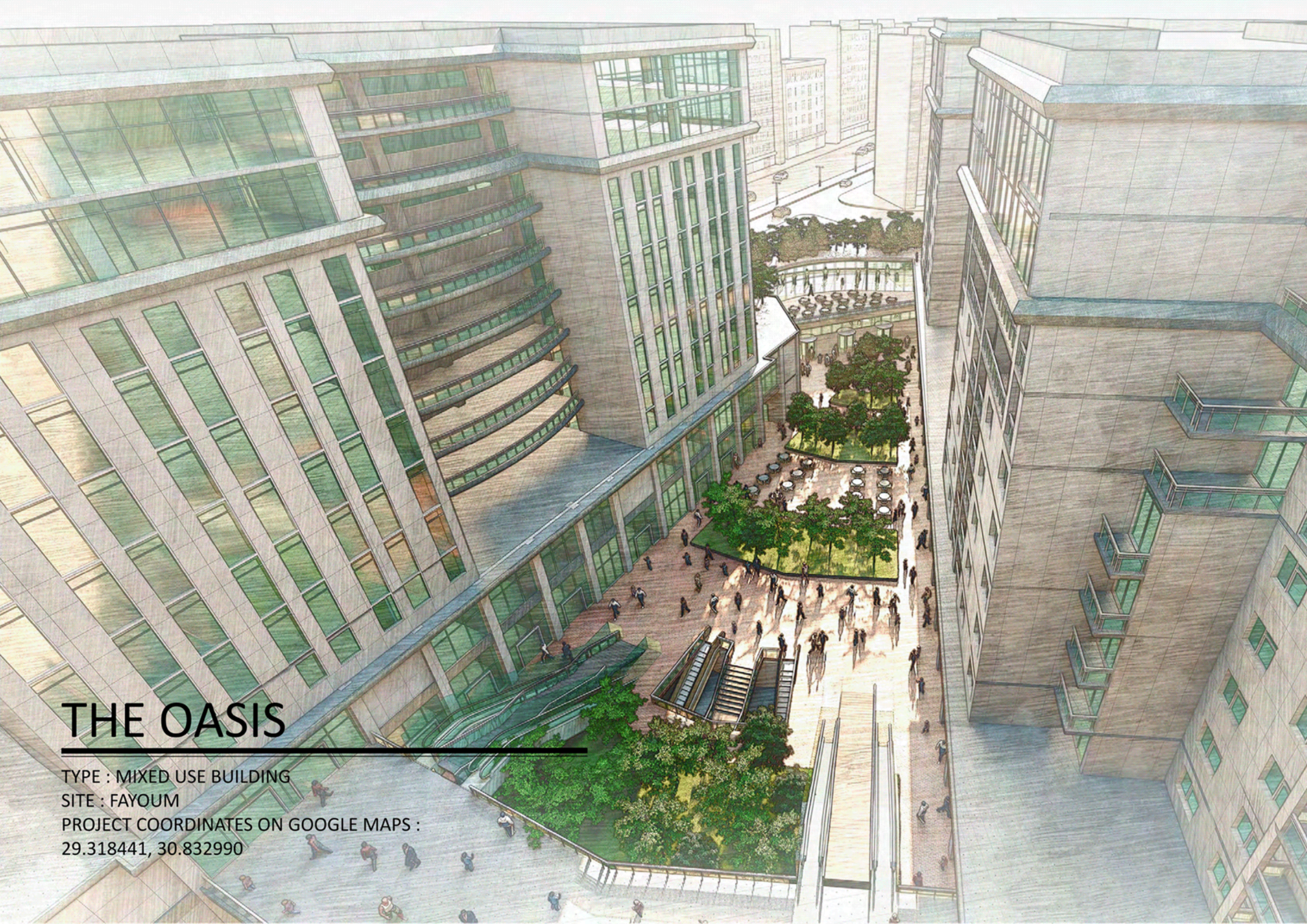


## 08 OPENING MECHANISM

The opening mechanism of the bridge -that represents the fall in the memories of the journey- takes place in two stages, first the holding hands retracts backwards, and secondly the main platform of the bridge is divided and retracted back down allowing ships movement.







# THE OASIS

---

TYPE : MIXED USE BUILDING

SITE : FAYOUM

PROJECT COORDINATES ON GOOGLE MAPS :

29.318441, 30.832990



## 01 DESIGN CHALLENGES

- + Bonding all the functions of the complex together in a way that is easily accessed.
- + The land is surrounded by an industrial zone from the south.
- + Making a good linkage between the main entrance of the mall and atrium to create a more active and interesting space for the visitors.
- + Upgrading the region in terms of the type of services available with a project that blends with the urban context.

The industrial zone



Low-income housing



## 02 SITE ANALYSIS

Context & Surroundings



Land Geometrical Data

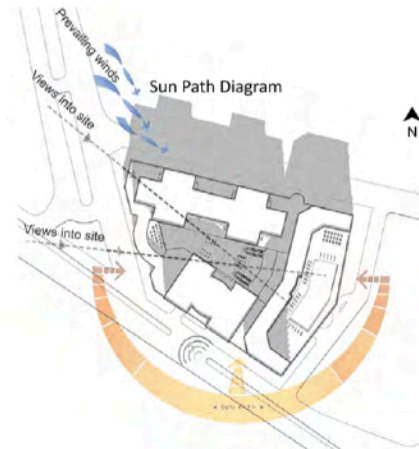
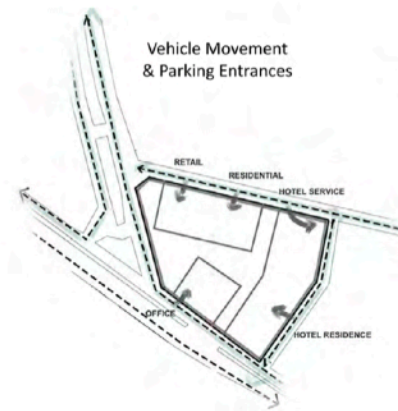


## 03 CONCEPT

- + The idea is to design the main atrium for the complex acts as its heart, which has the qualities of a public space inspired by the park nearby, as it invites people to calm away from the street noise. The atrium is surrounded by the complex towers from three sides which gives it a sense of containment, and open form the entrance side which gives it a sense of relief.

## 04 DESIGN DECISIONS

- + Locating the hotel on the service road which makes it private to the hotel and making the tower facing east looking to the park which has visual continuity.
- + Locating the residential towers on the secondary road for its quietness, facing north, and looking at university.
- + Locating the office tower on the main road for direct and easy access.
- + Locating the main entrance for the mall on the university road which has active pedestrian movement all the time.

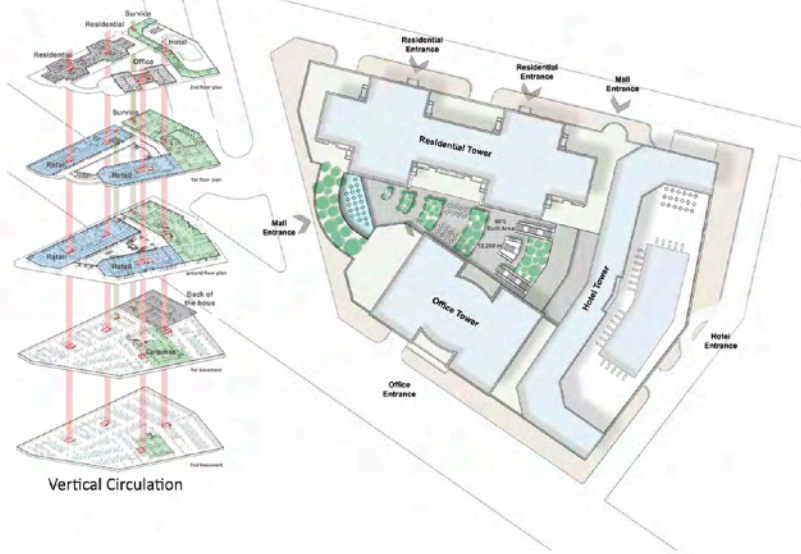






Mall Entrance

## 06 LAYOUT



## 07 RETAIL & HOTEL

### GROUND FLOOR PLAN

- |                    |                         |
|--------------------|-------------------------|
| 01 Main Hall       | 14 Buffet               |
| 02 Foyer           | 15 M. Entrance          |
| 03 M.P.U           | 16 Reception            |
| 04 office          | 17 V.I.P Reception      |
| 05 Lobby           | 18 Meeting Room         |
| 06 Security        | 19 Service              |
| 07 Luggage         | 20 Fax-Scan             |
| 08 Bank            | 21 Open Air Courtyard   |
| 09 Retail          | 22 Retail               |
| 10 Main Restaurant | 23 Cafe                 |
| 11 R. Kitchen      | 24 Residential Entrance |
| 11 Restroom        | 25 Office Entrance      |
| 12 M. Kitchen      | 26 Hyper Market         |

### FIRST FLOOR PLAN

- |             |                      |
|-------------|----------------------|
| 01 Bar      | 10 Restaurant        |
| 02 Foyer    | 11 Kids Area         |
| 03 M.P.U    | 12 Clinical Pharmacy |
| 04 Restroom | 13 Retail            |
| 05 Cafe     | 14 Cafes             |
| 06 kitchen  | 15 Food Court        |
| 07 Storage  | 16 Restaurants       |
| 08 buffet   | 17 Kitchen core      |
| 09 Kitchen  | 18 restroom          |

### SECTION A - A



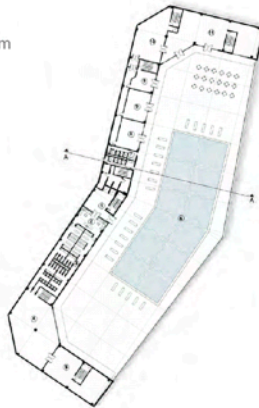




The Hotel

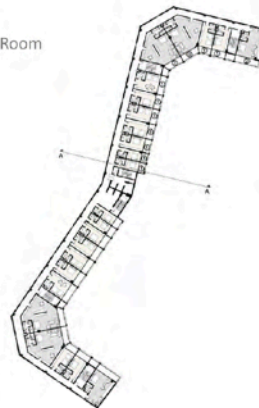
#### HOTEL SECOND FLOOR

- 01 Lobby
- 02 Reception
- 03 Changing room
- 04 Gym
- 05 Spa
- 06 Pool
- 07 Restroom
- 08 Cafe
- 09 Bar
- 10 Kitchen
- 11 Restaurant



#### HOTEL TYPICAL FLOOR

- 01 Room
- 02 Suite Room
- 03 Master Suite Room



## 08 RESIDENTIAL TOWERS



#### RESIDENTIAL 4TH FLOOR



- 1) 180m<sup>2</sup> - 3 beds (1 master) - 3 baths
- 2) 170m<sup>2</sup> - 3 beds (1 master) - 3 baths
- 3) 185m<sup>2</sup> - 3 beds (1 master) - 2 baths
- 4) 175m<sup>2</sup> - 3 beds (1 master) - 2 baths
- 5) 185m<sup>2</sup> - 3 beds (1 master) - 2 baths
- 6) 185m<sup>2</sup> - 3 beds (1 master) - 2 baths



#### RESIDENTIAL 8TH FLOOR



- 1) 355m<sup>2</sup> - 4 beds (1 master) - 4 baths
- 2) 330m<sup>2</sup> - 4 beds (1 master) - 3 baths
- 3) 320m<sup>2</sup> - 4 beds (1 master) - 4 baths





RESIDENTIAL 10TH FLOOR DUPLEX



RESIDENTIAL 11TH FLOOR DUPLEX



- 1) 725m<sup>2</sup> - 5 beds (3 master) - 7 baths - 2 kitchens - gym - library - gaming room
- 2) 685m<sup>2</sup> - 5 beds (3 master) - 7 baths - 2 kitchens - gym - library - gaming room
- 3) 720m<sup>2</sup> - 5 beds (2 master) - 4 baths - 2 kitchens - library

SECTION B - B



09 OFFICE BUILDING



OFFICE TYPICAL FLOOR PLAN



- 01 Lobby
- 02 Public Corridor
- 03 Open Space
- 04 Office
- 05 Terrace
- 06 Restroom
- 07 Cafeteria
- 08 Mechanical



SECTION C - C

