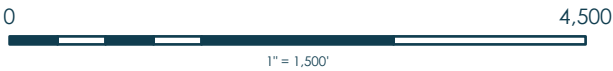




Proposed Changes to Rte. 340/522 Corridor

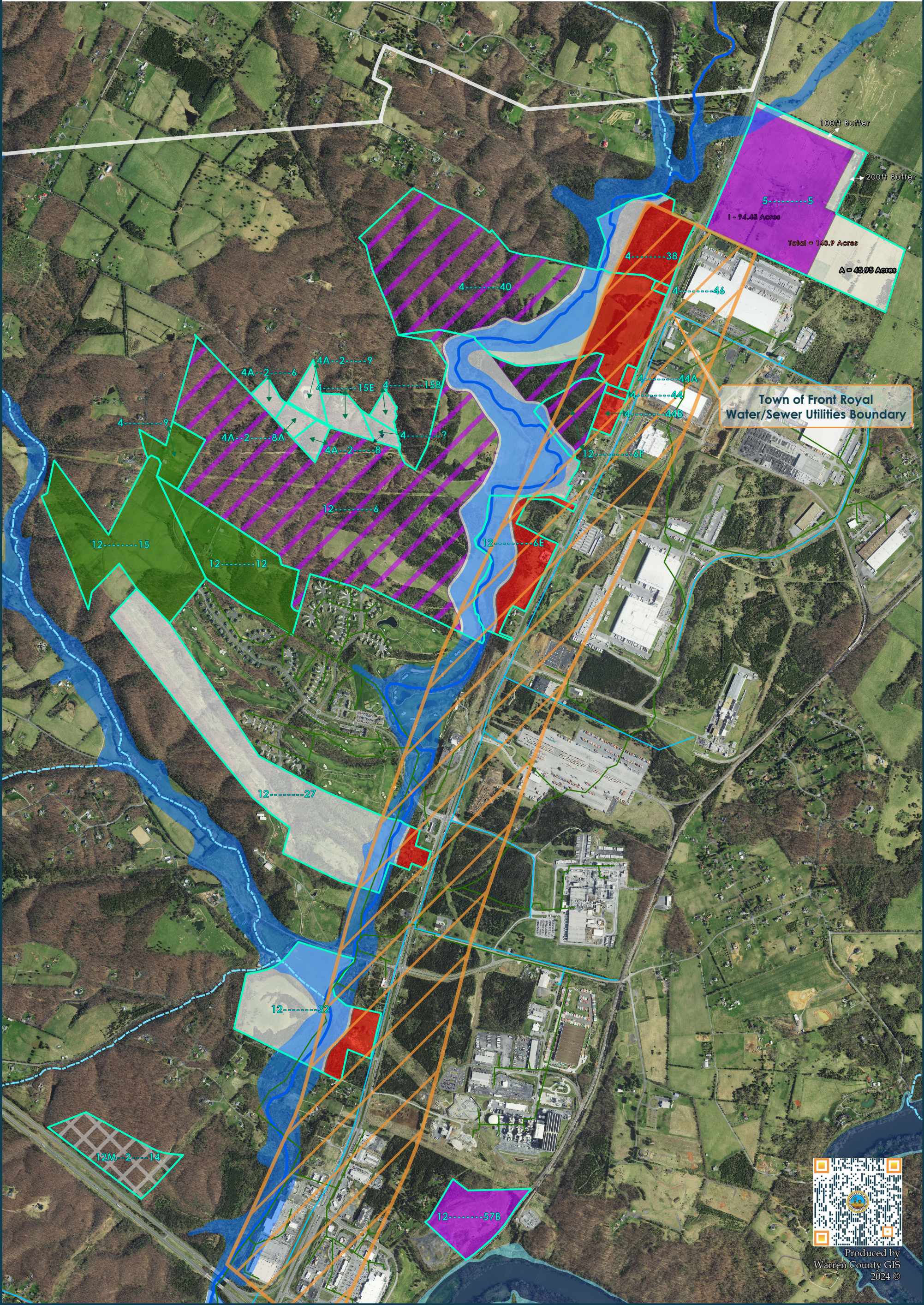
Future Land Use: Option 1



P:\Arcdata\ArcMap\APRX\Map Requests\Matt Wendling\Proposed FLU Corridor\Prop FLU Corridor Option 1 - Ledger.pdf

- Extended Corridor Overlay
- Parcels of Interest
- Waterways
 - Crooked Run
 - Other Waterways
- FEMA Flood Zones
 - A - 1% Annual Chance
 - AE - 1% Annual Chance
 - X-Shaded - 0.2% Annual Chance

- ### Proposed Future Land Use
- Agricultural
 - Agricultural - Down Zoning
 - Commercial
 - Industrial
 - Industrial - Existing FLU
 - Rural Residential



Produced by
Warren County GIS
2024 ©