

Why does my hearing aid make a whistling sound?

The earpiece may not be inserted correctly in the ear. Take it out and reinsert. If the problem persists, you may need to get the fitting of the earpiece or the hearing aid checked.

Do the earpiece and tube have to be changed regularly? **YES!**

The tube or receiver in the ear may need to be changed every 6-12 months. This should be done by a healthworker.



An earpiece needs to be replaced every 6-12 months. A custom made earmould will have to be changed every 1-3 years or as directed by the healthworker (may be more often for growing children).

How do I check if the battery is working?

You may need help from another person to do this.



- 1 Remove the hearing aid from the ear
- 2 Switch the hearing aid on and turn the volume control to the highest setting
- 3 Place the hearing aid in the palm of your hand
- 4 If there is a continuous whistling sound it indicates the battery is working
- 5 If there is no whistling sound, the battery should be replaced
- 6 If there is still no whistling sound after inserting a new battery then there could be a problem with the hearing aid. You need to get it checked

Remember

CHECK the batteries in a child's hearing aid EVERY DAY



© World Health Organization 2023. Some rights reserved. This work is available under the [CC BY-NC-SA 3.0 IGO](https://creativecommons.org/licenses/by-nc-sa/3.0/) licence.

WHO/UCN/NCD/SDR 23.4

https://www.who.int/health-topics/hearing-loss#tab=tab_1



TIPS FOR HEARING AID USERS





What is a hearing aid?

A hearing aid is an electronic device that is worn on or inside the ear. It helps to amplify sounds to allow a person with hearing loss to better hear speech and other sounds.

There are many different types of hearing aids and they come in various colours, sizes and shapes.

The most common types are behind-the-ear and in-the-ear.



What are the parts of a hearing aid?

Commonly used behind-the-ear hearing aids have 3 parts



The hearing aid case that sits over and behind the ear. This houses the electronic system of the hearing aid.

A tube which joins the two parts.

An earmould or silicone earpiece that delivers sound into the ear.

An in-the-ear hearing aid is smaller and all components are integrated in one device that is specially shaped to fit into the person's ear.

How should I care for my hearing aid?

To avoid losing or damaging your hearing aid



Keep it in a safe, cool place when not using it



Keep it away from water and heat at all times



Take it off while bathing or showering
If it absorbs moisture it may not work properly



At night, open the battery drawer and place the hearing aid into a sealed plastic tub with something dry e.g. fine tissues or rice



Make sure it is switched off when not being used



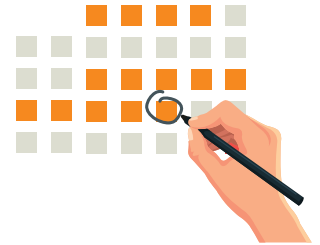
Clean the earpiece with a dry cloth every day



If directed by the dispenser, once a month remove the earpiece and tube
Wash tube and earpiece with soapy water
Allow tube and earpiece to dry completely before reattaching to the hearing aid

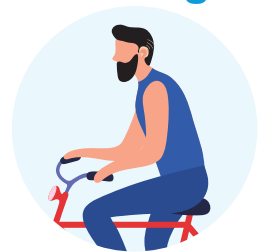
How often should I change the batteries of my hearing aid?

Batteries usually have to be changed
every 7-10 days



Should I wear my hearing aid at all times or only when I want to listen to something?

Hearing aids should be worn at all times during your waking hours



My hearing aid is not working properly. What could be the problem?



Battery may need to be changed. **TEST IT!**

Wax may be blocking the ear piece or tubing. Clean the ear piece and tube!

It may need to be repaired. Take it to a hearing aid technician!