



Let's
Learn
*About Space and
the Seasons*



MILLION WORD GAP PROJECT

The Hope-Hear Million word gap project by
Hope-Hear NPC, 2024 / 064699 / 08
is licensed under a Creative Commons Attribution -
Non-Commercial 3.0 Unported License

www.hope-hear.org
#HOPE-learn



Explaining big ideas like space, the universe, the moon, and seasons to a small child might seem too complicated, but it is actually really important!

Children are naturally curious. They ask "why" and "how" all the time. By introducing concepts like the moon or the seasons, you're helping them to learn about the world around them and satisfying their curiosity.

Even though they might not fully understand these big ideas yet, learning about them helps them to build a foundation for later learning. Just like learning simple words or numbers, understanding things like the sun or the moon helps them connect ideas together as they grow.

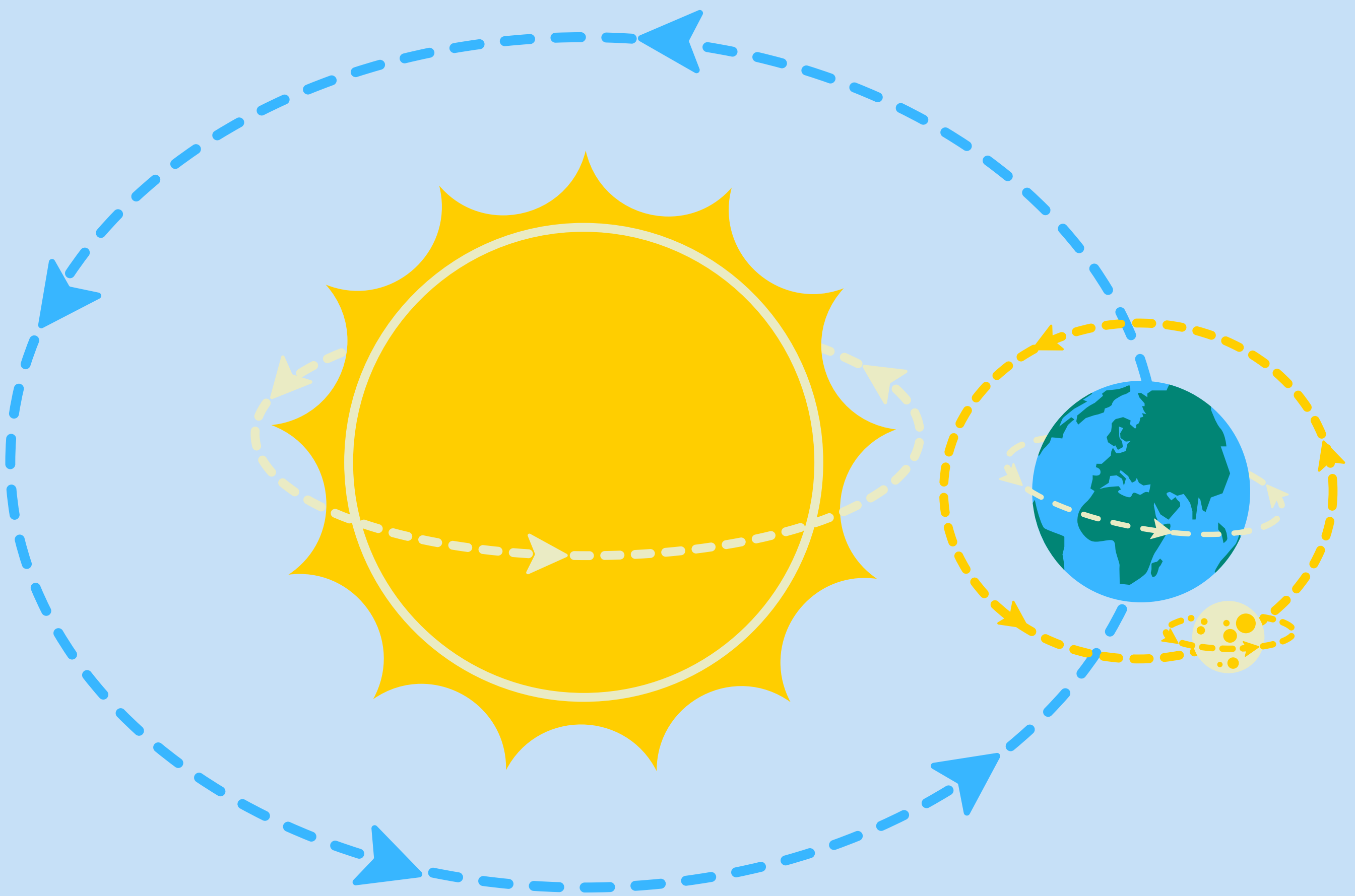
Children notice things like the moon in the sky, the changing weather, and different seasons. When you talk to them about why these things happen (like why it gets colder in the winter or why the moon changes shape), it helps them make sense of their world. It turns everyday observations into exciting discoveries!

Talking about space and the universe may spark imagination. They might start dreaming up fun ideas about stars, planets, or space adventures. This kind of thinking is great for developing creativity and problem-solving skills.

Explaining the phases of the moon or how seasons change can make nature more exciting for them. You can go outside together and look for the moon, see the leaves change color, or watch clouds. These experiences can be fun and help kids connect with the natural world.

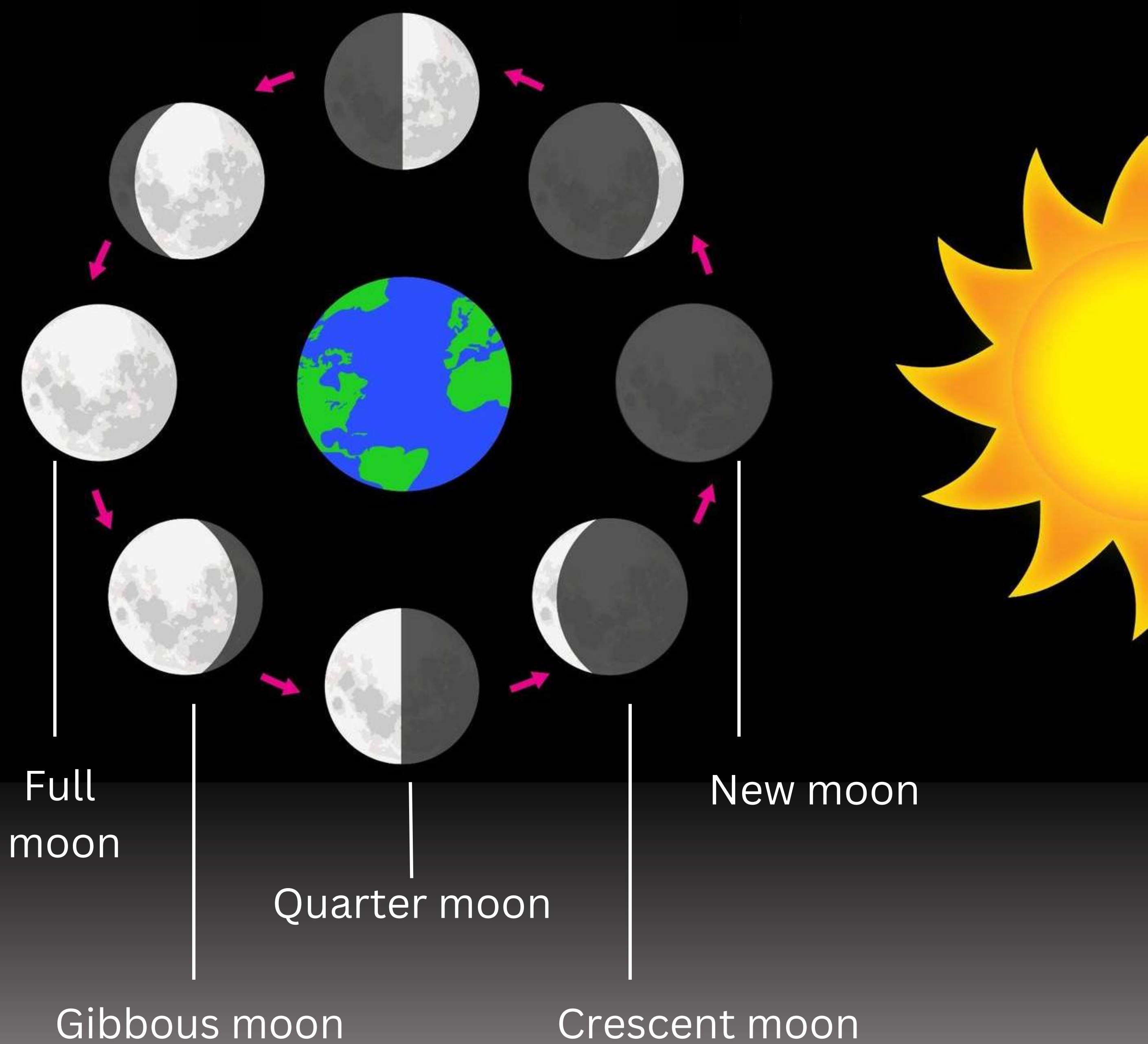
Learning is fun, reading is educational, and it helps children to start understanding how the world works. It gives them a sense of wonder and excitement about the world they live in!

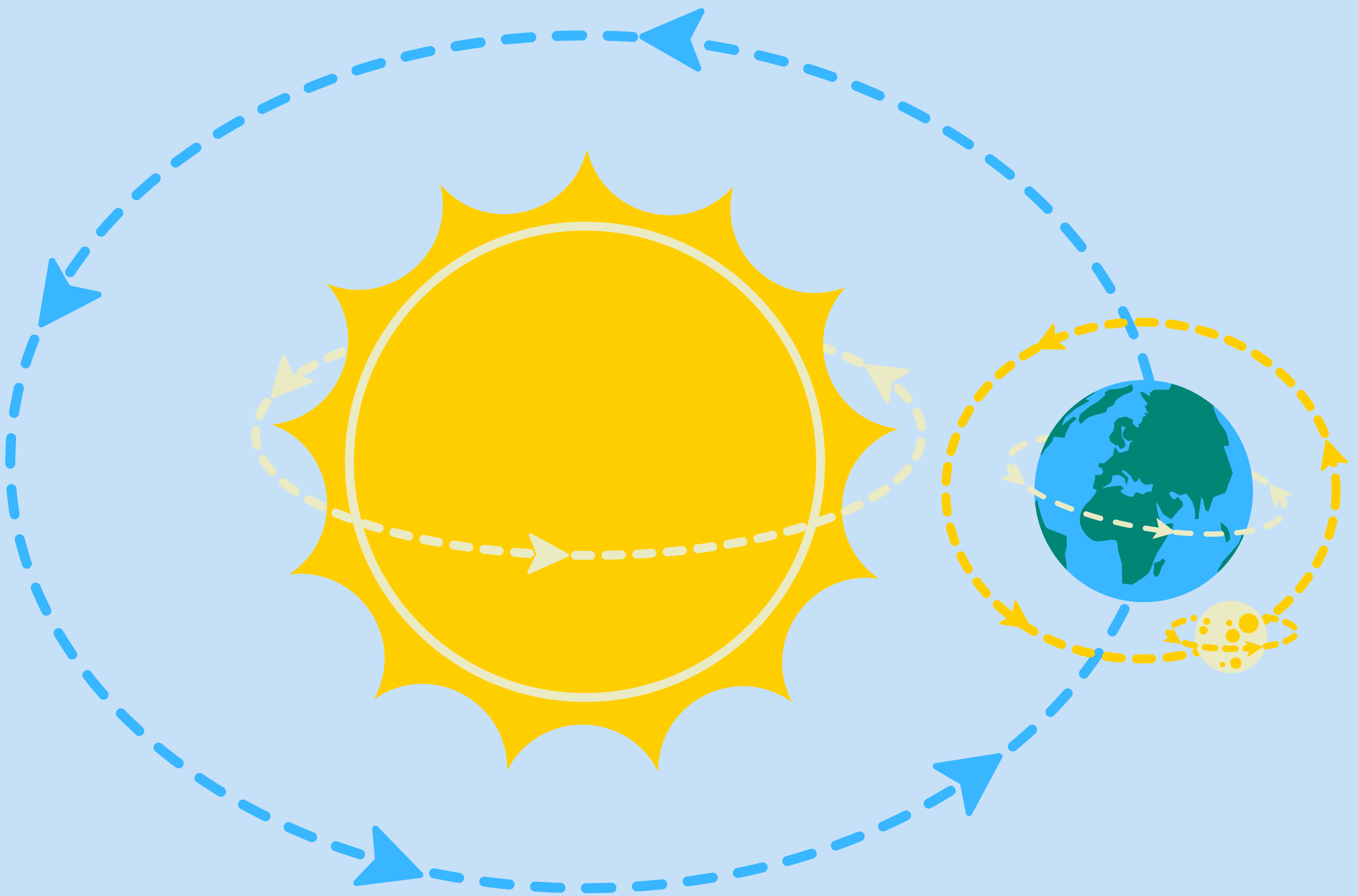
**It takes the Earth 365 days to
travel around the Sun.
That is why 1 year is 365 days.**



**It takes the moon 28 days to
travel around the earth.**

These are the phases of
the moon as it travels
around Earth.





Let's look at the Earth as it travels around the Sun.

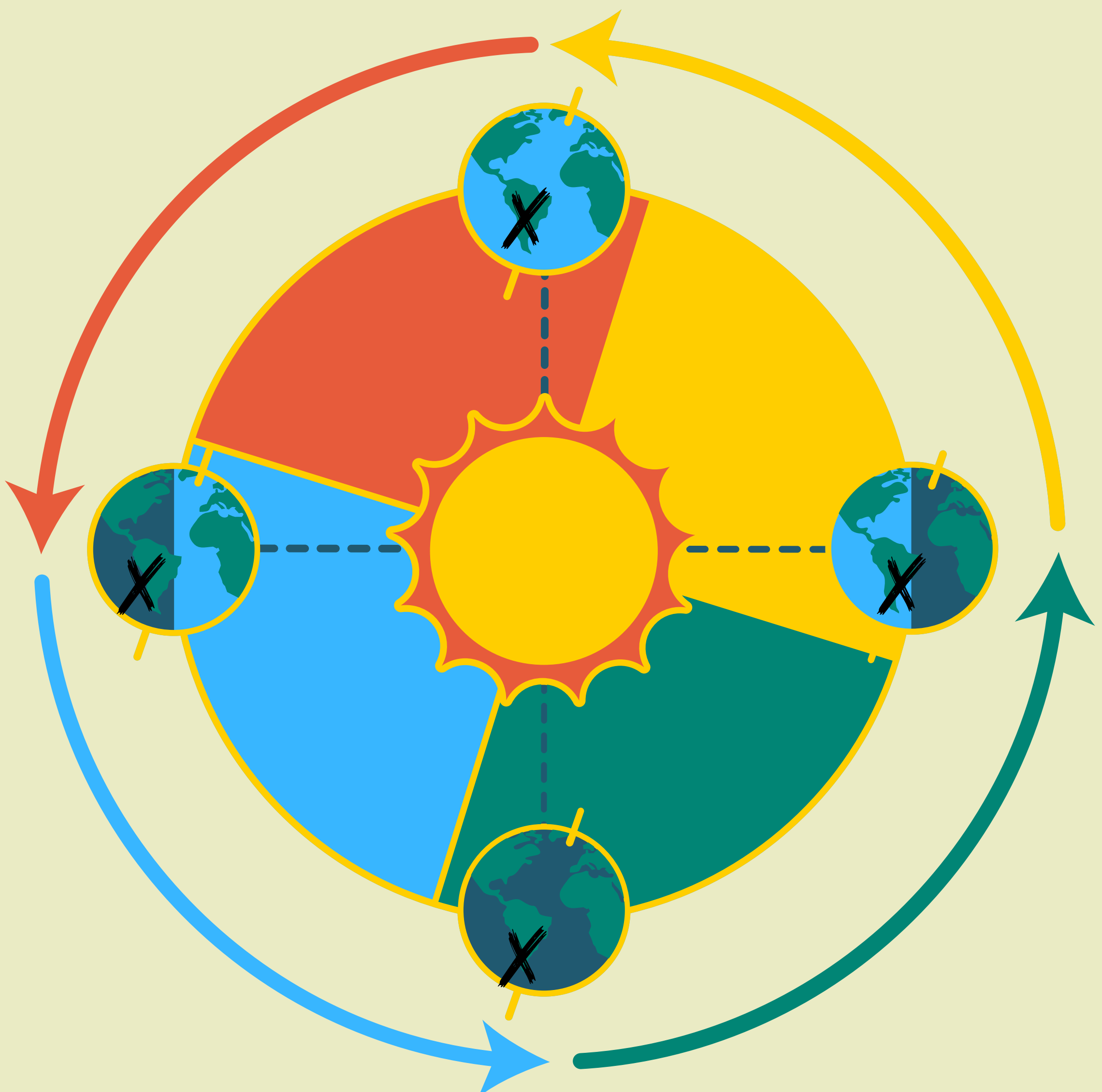
Imagine you live in the same country as Jasmine.

She lives where  marks the spot.



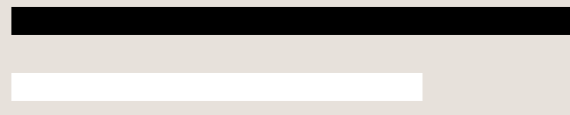


Can you find the ~~X~~ in each of the
globes below?

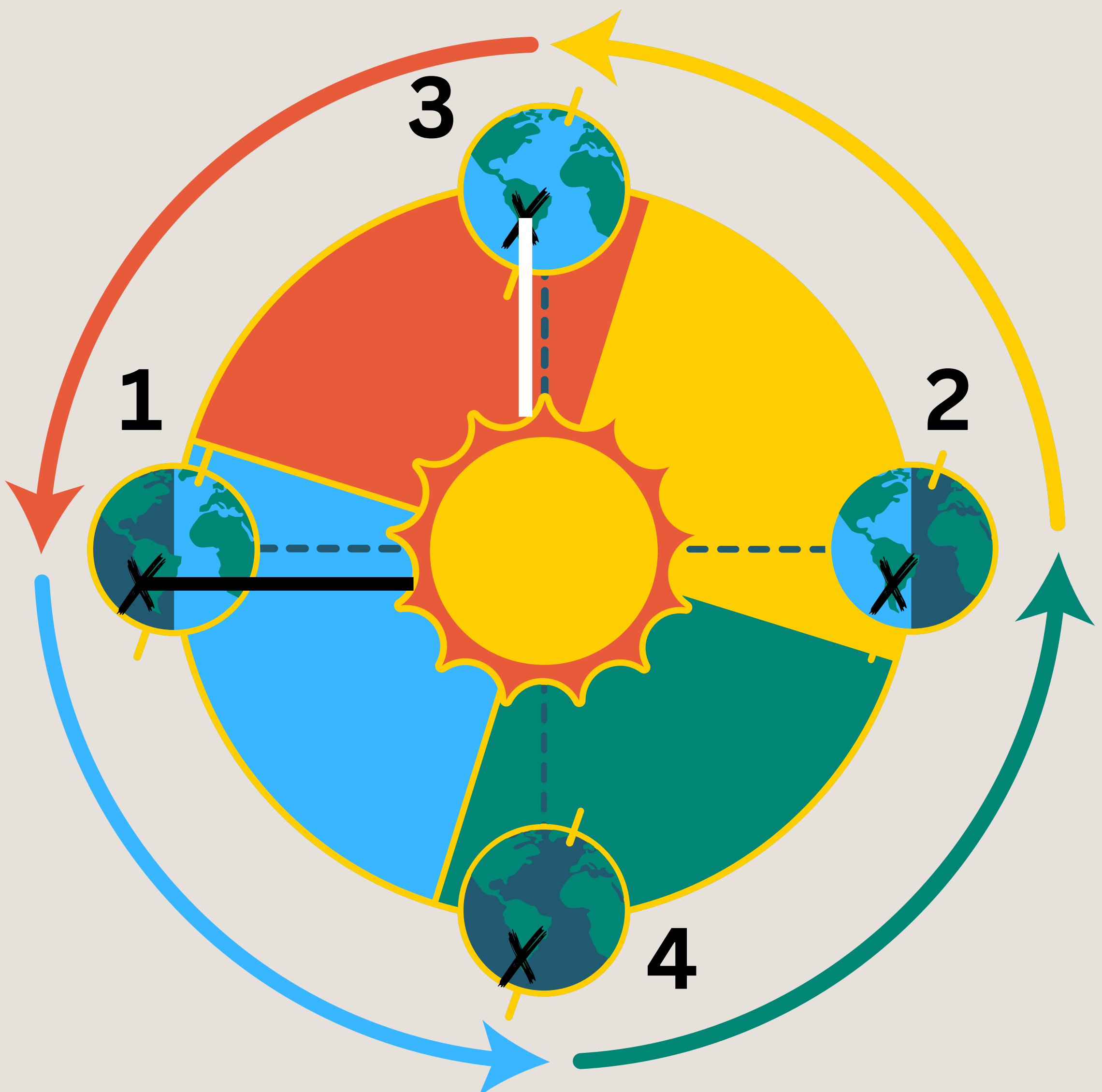




**Which line is longer?
The black line?
Or the white line?**



**Yes! The black line is longer!
So the Earth is further away from the
sun in position 1 (autumn) compared to
position 3 (summer).**

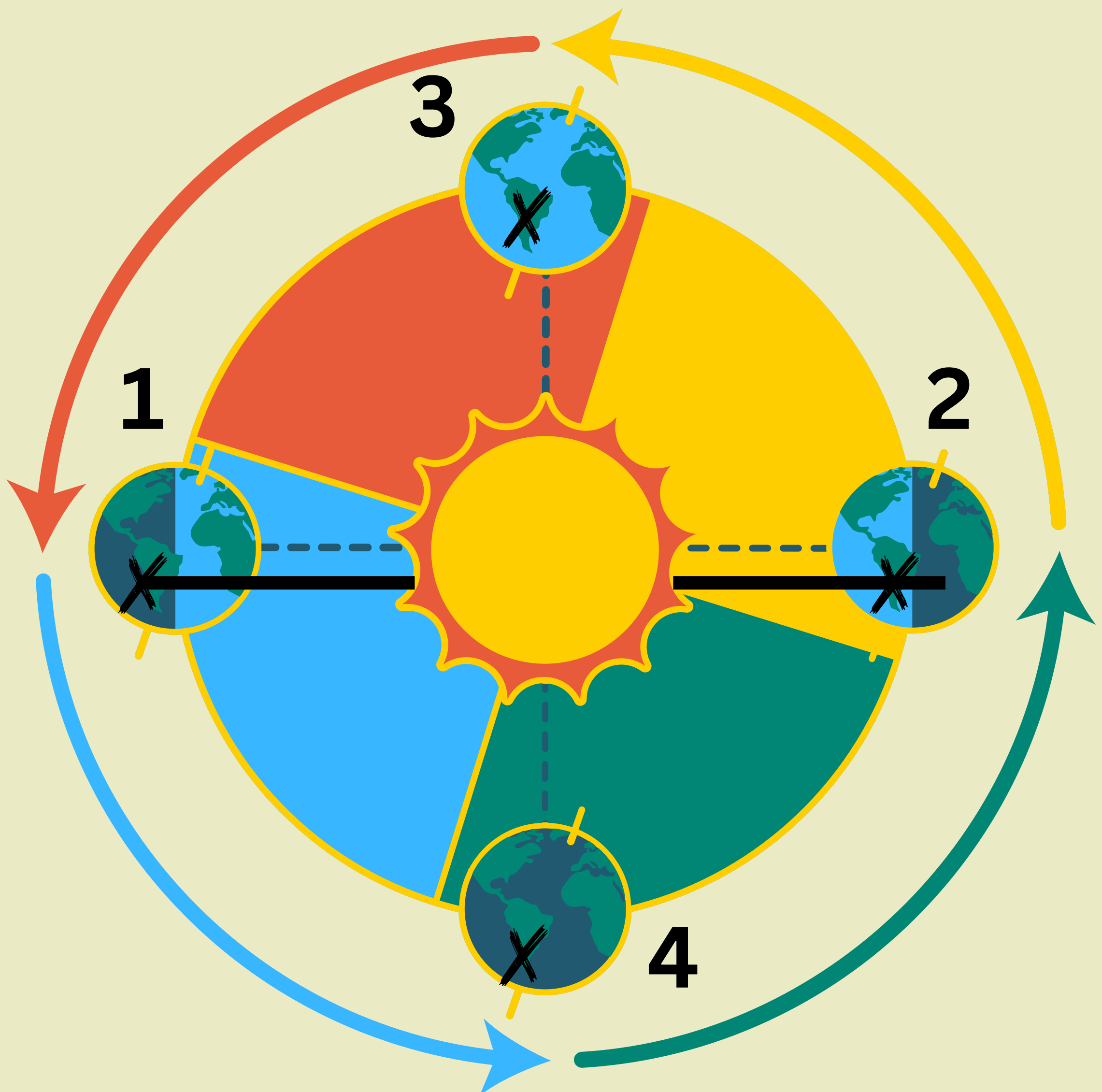




**Look closely at the
two black lines.**

**Can you see that that Jasmine
is closer to the sun in position 2
(spring) compared to position 3
(autumn)?**

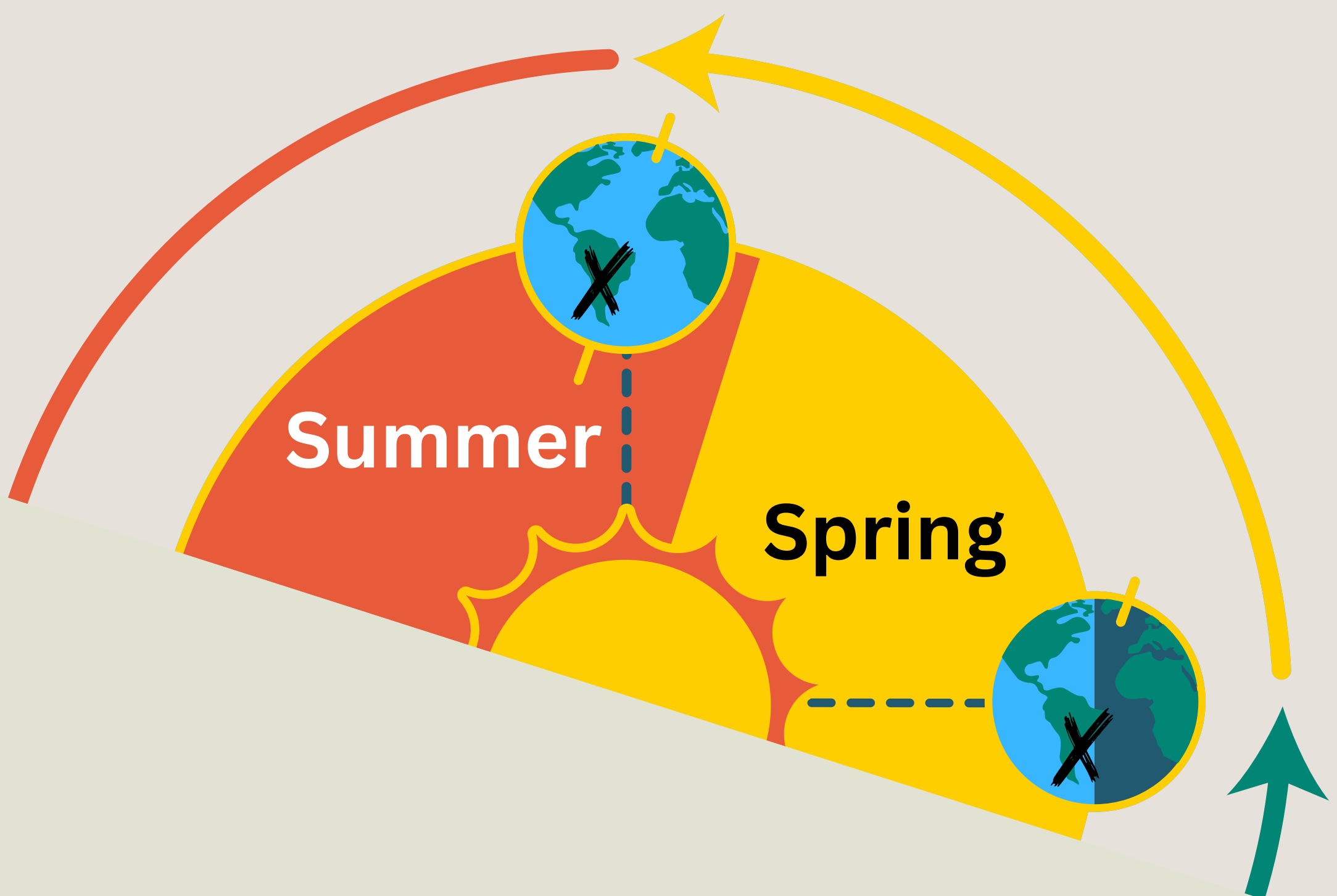
**In position 4 Jasmine is far away
from the sun, which is why we feel
colder in winter.**

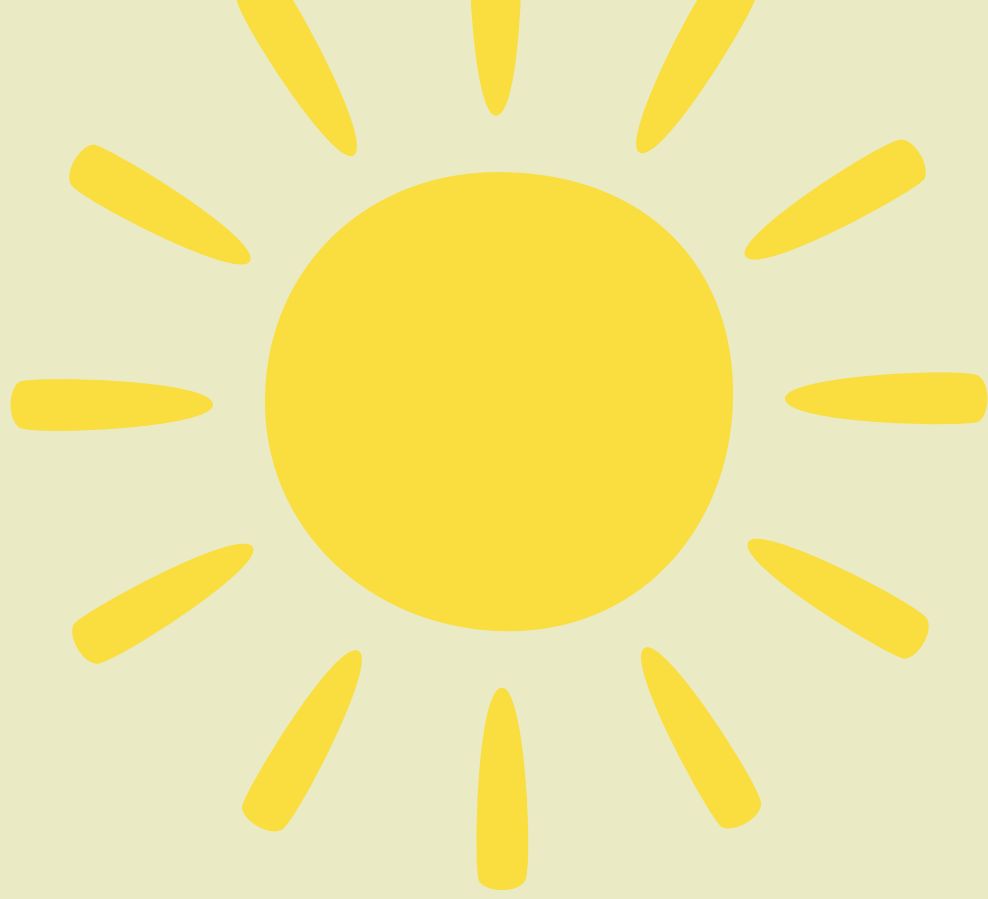




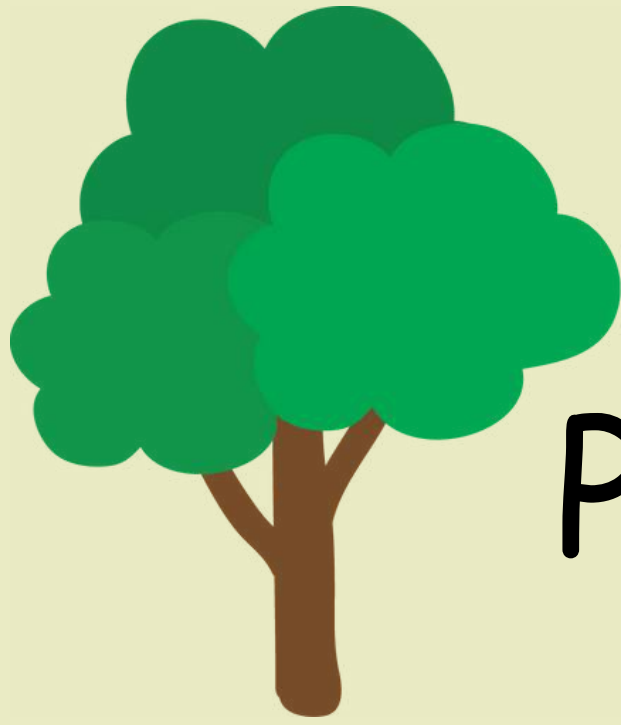
**So when the earth and the ~~X~~
are facing the sun, it is warm.**

**When the earth is closer to the
sun it is summer and when it is
a bit further away, it is spring.**

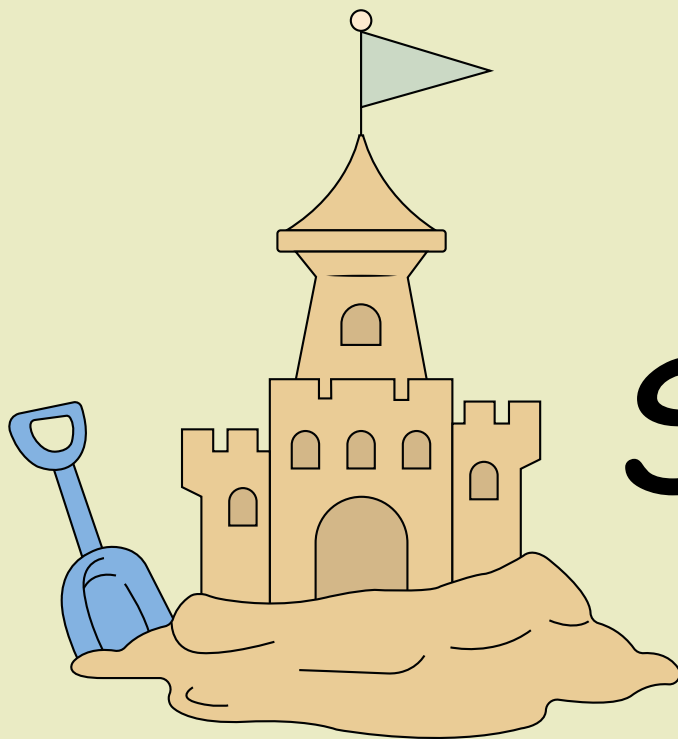




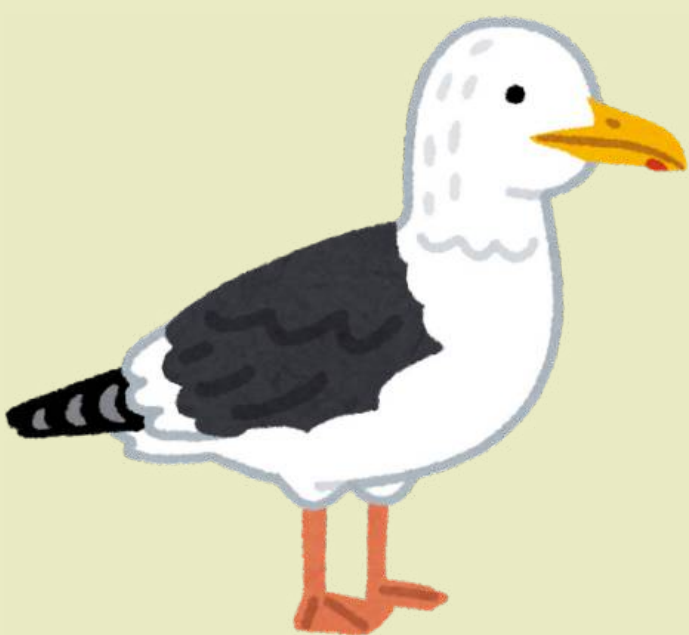
Summer



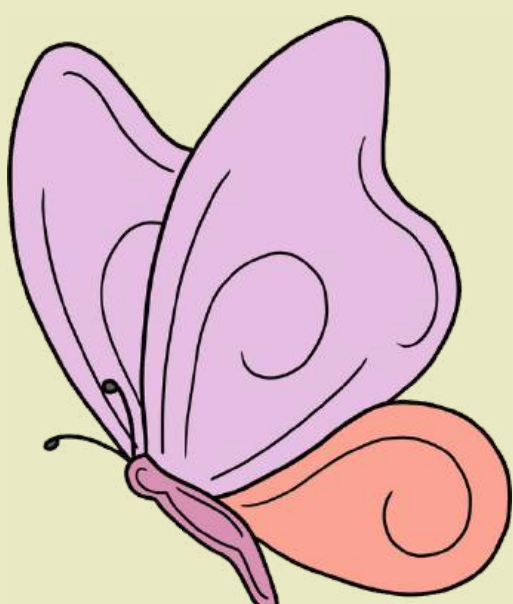
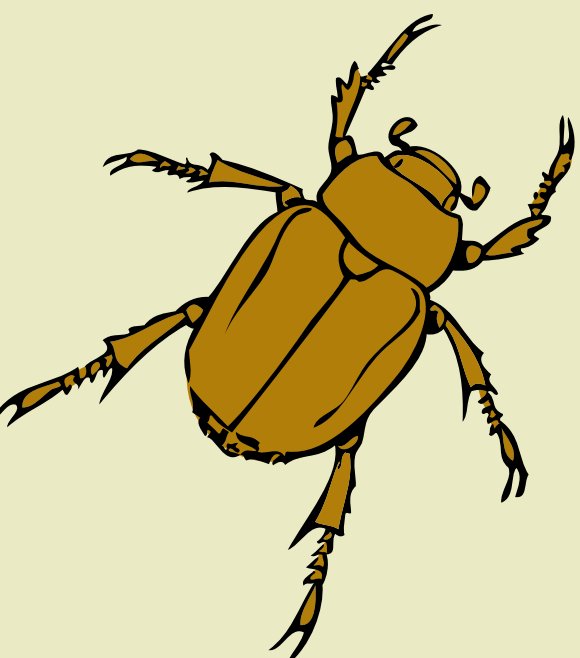
Hot
Playing outside
Beach



Sandcastles
Balls

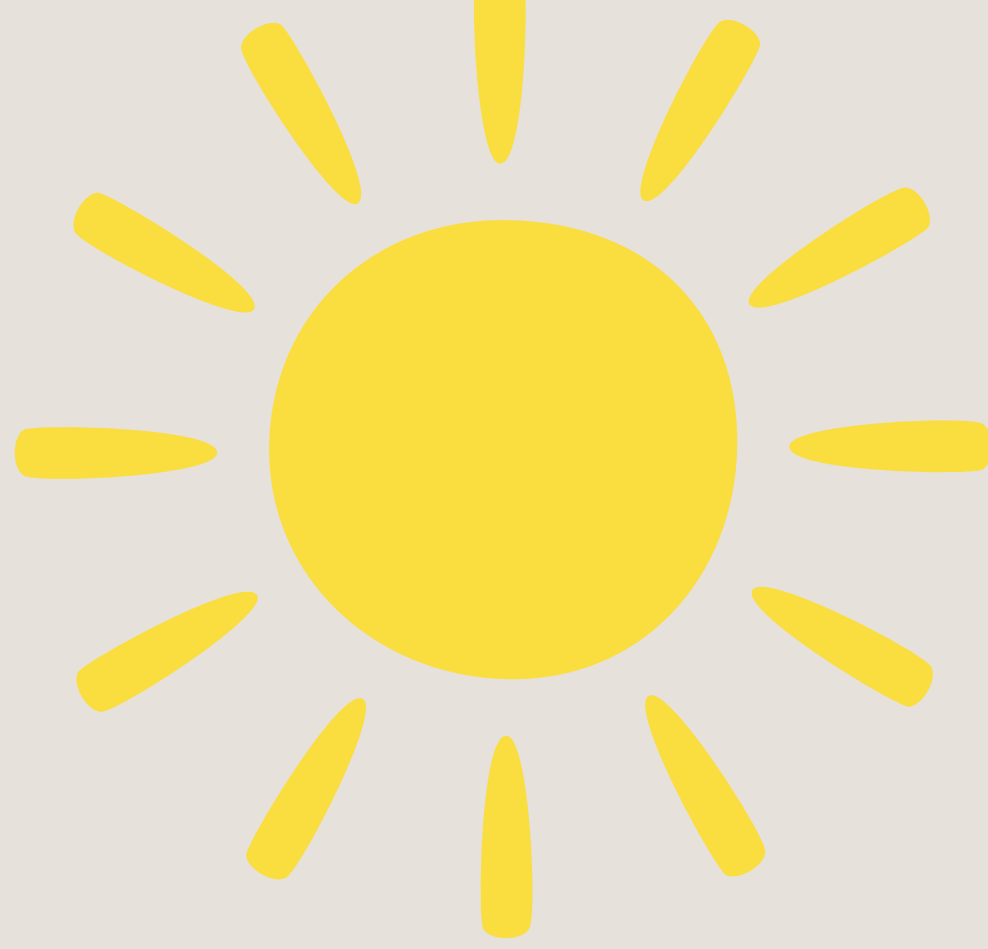


Seagulls
Ice-cream



Buttefly
Christmas beetles

Spring



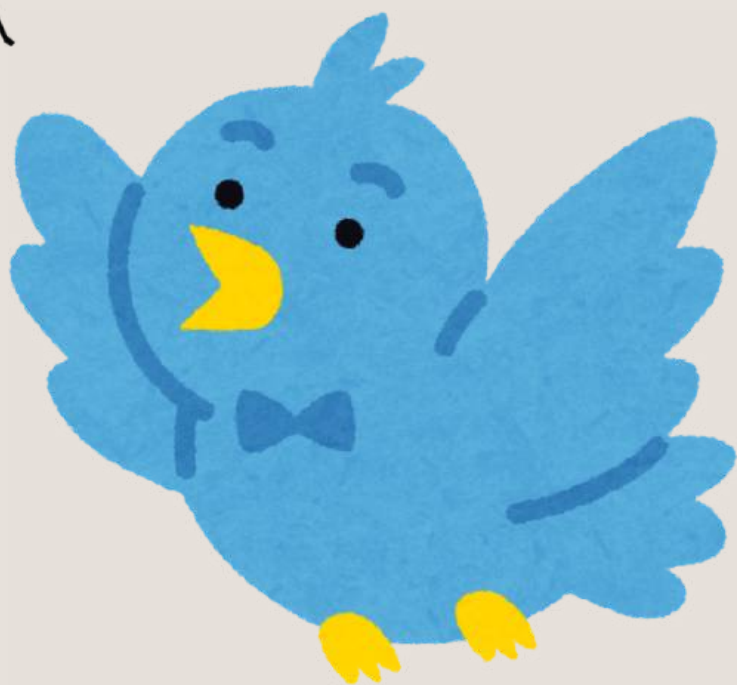
Flowers



Tree blossoms



Mosquitoes



Bird sounds



Dragon fly



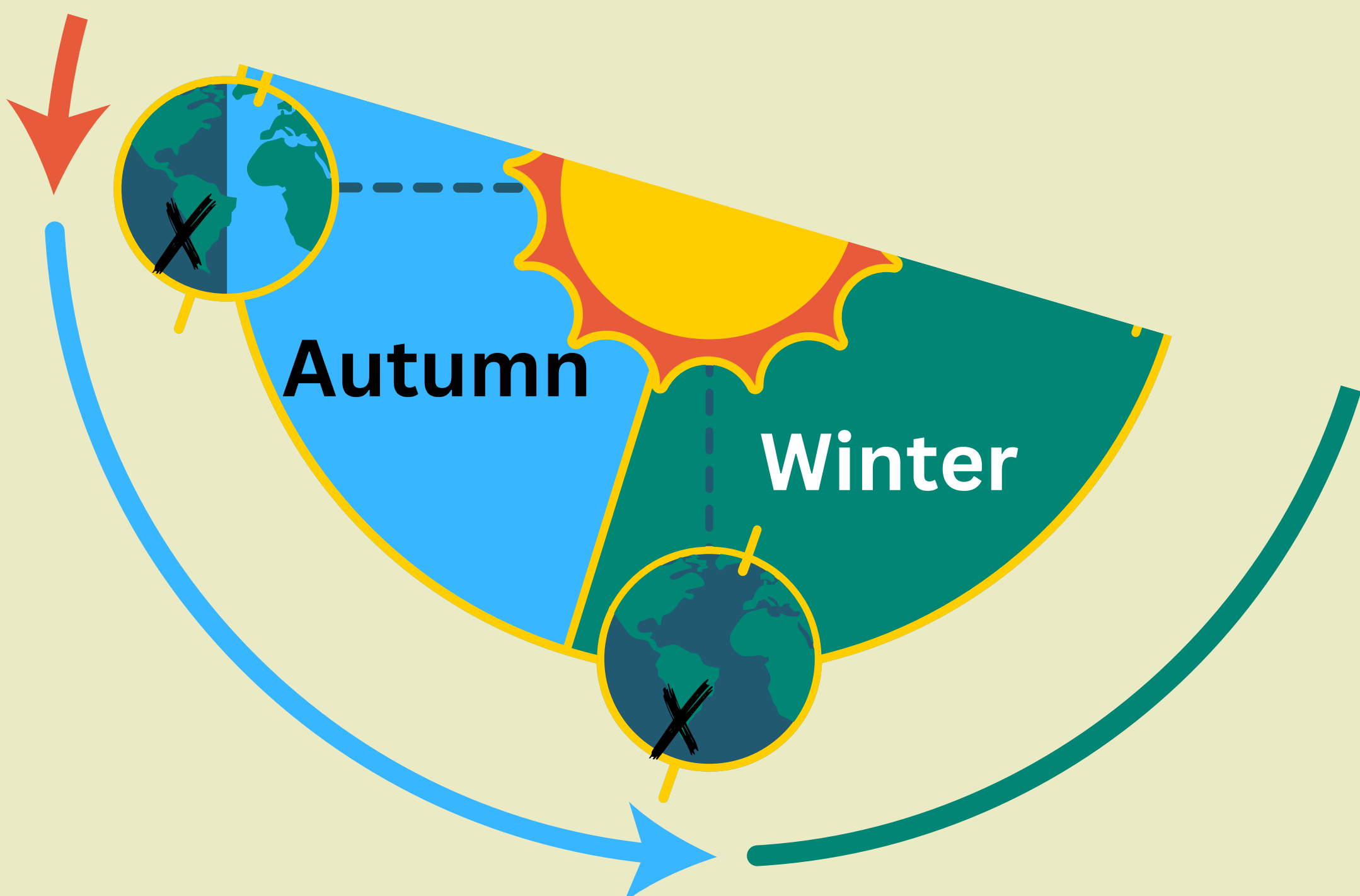
Baby animals

Insects



When the earth and the ~~X~~
are facing away from the
sun, it is cold.

When the earth is closer to
the sun it is autumn and
when it is further away, it
is winter.



Autumn

Changing leaves



Colder

Darker earlier



Winter



Cold

Wet



Hot chocolate



Bare trees

Less birds

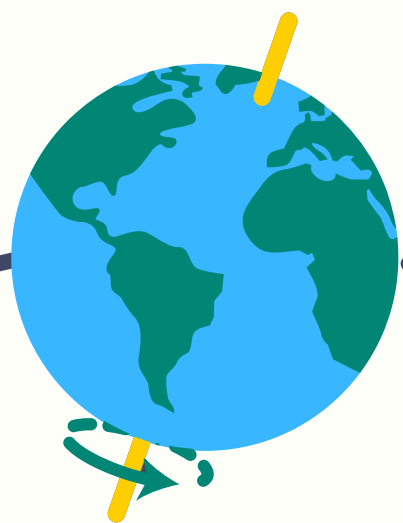
No insects



Let's go through it again.



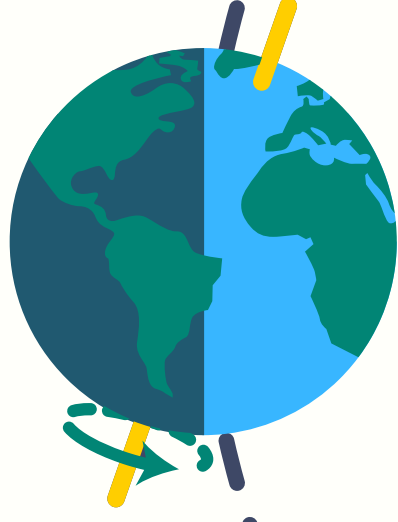
Summer



Spring



Winter



Autumn

