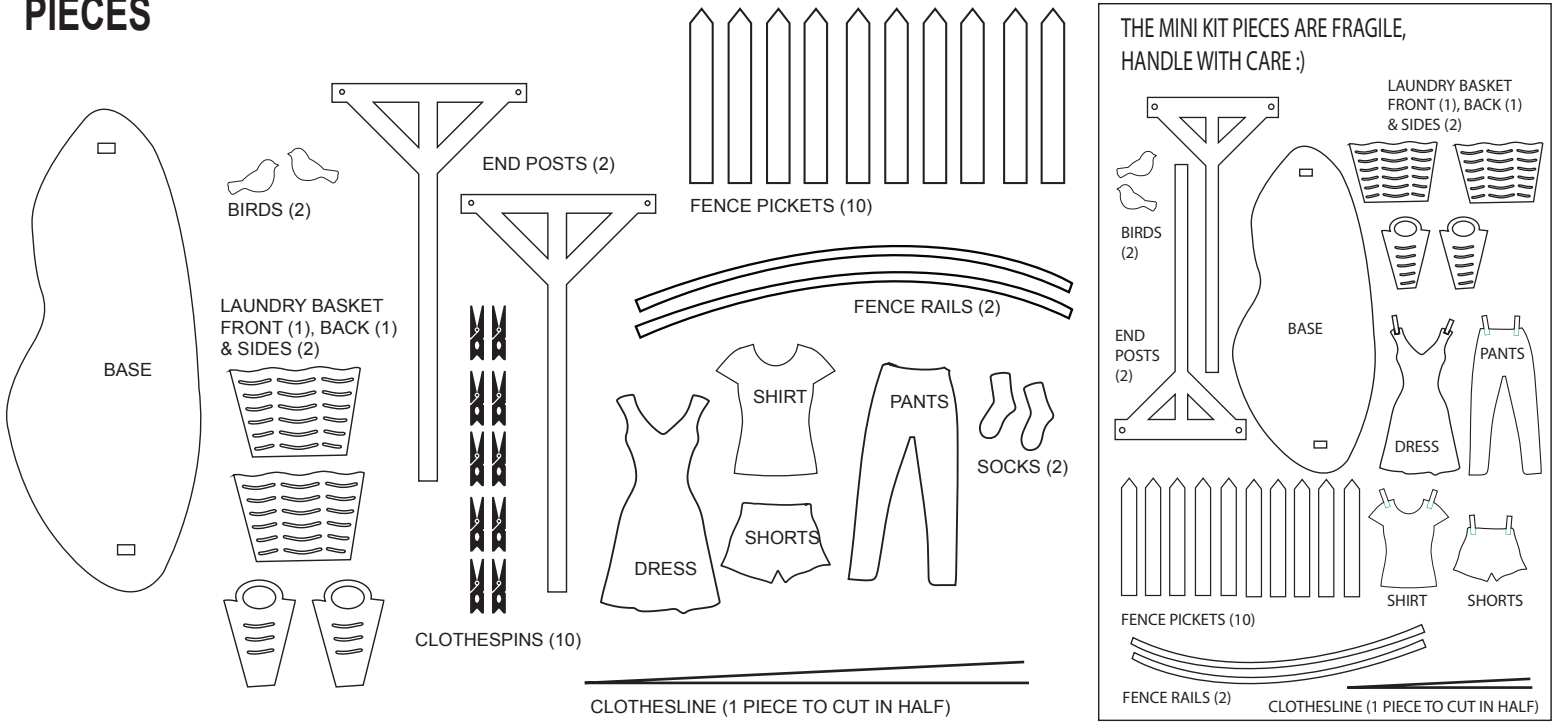


EACH PIECE HAS A PROTECTIVE PIECE OF MASKING TAPE, REMOVE BEFORE DECORATING. YOU CAN USE TAPE AS A TEMPLATE IF YOU WISH FOR DECOUPAGE.

PIECES



INSTRUCTIONS



ASSEMBLE BASE AND POSTS:
ADD A DAB OF GLUE TO END POSTS.
INSERT END POSTS INTO BASE SLOTS.
CUT WIRE CLOTHES LINE IN HALF.
INSERT INTO HOLES AT TOP OF END POSTS.
TWIST ENDS WITH SMALL PLIERS TO SECURE.



GLUE FENCE TO BACK OF BASE BETWEEN POSTS.



ASSEMBLE FENCE:
FENCE RAIL SHOULD BE FACING CURVED SIDE UP WHEN ASSEMBLING (THE DARKER SIDE WITH LIGHTER SIDE ON TOP).
GLUE FIRST POST TO RAIL ABOUT 1/4" FROM END.
USE ANOTHER FENCE POST AS A SPACER TO SPACE EVENLY. ONCE TOP ROW IS COMPLETE, GLUE SECOND RAILING TO LOWER HALF. (SEE NEXT IMAGES).



I RECOMMEND ADDING CLOTHESPINS TO LINE, THEN GENTLY ADDING YOUR DECORATED CLOTHING. CLOTHESPINS ARE SLIPPERY AND DELICATE! YOU CAN GET MORE PINS AT DOLLAR TREE OR WALMART.



BACK OF FENCE COMPLETE.



FRONT OF FENCE COMPLETE.



CLIP YOUR DECORATED CLOTHING TO THE LINE. ADD BASKET AND BIRDS WHERE DESIRED.
***FOR MINI KIT, GLUE CLOTHING DIRECTLY TO LINE, CLOTHESPINS ARE PART OF THE CLOTHING.**