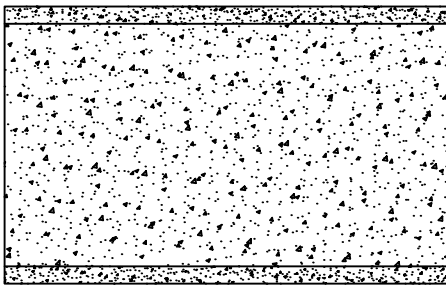
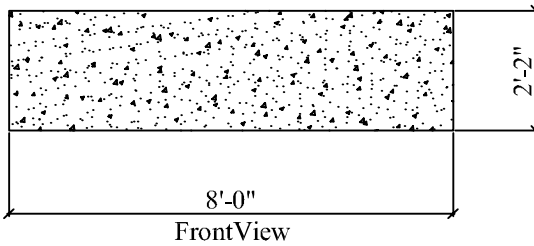


**CATTLE FEEDER "J" TYPE**

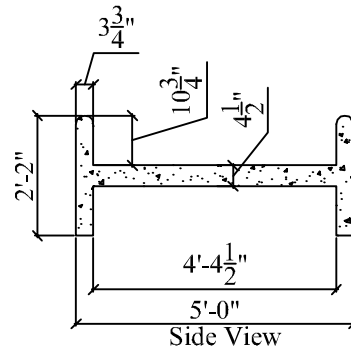
Approx. weight = 2,000 lbs



Top View



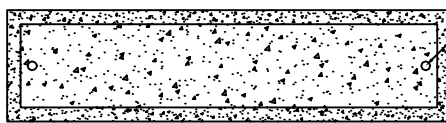
FrontView



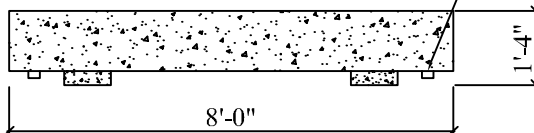
Side View

**CATTLE FEEDER "H" TYPE**

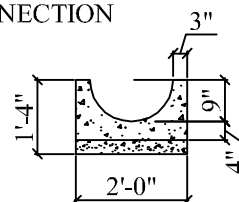
Approx. weight = 3,000 lbs



Top View



FrontView



Side View

**CATTLE FEEDER "U" TYPE**

Approx. weight = 1,600 lbs



CTJAMISON.COM  
PH: 540-483-5944

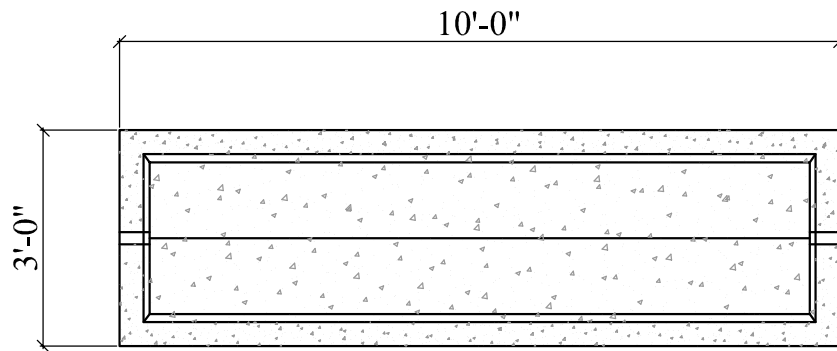
**Cattle Feeders**

Date

Feb 2016

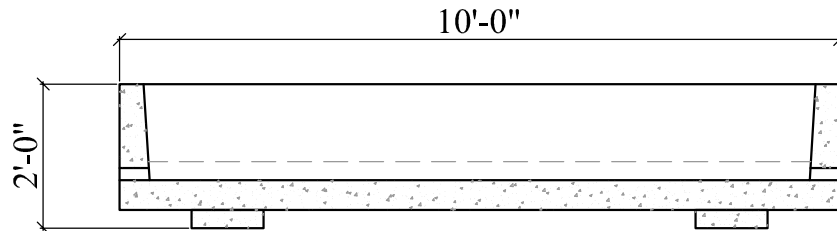
Scale

Not To Scale



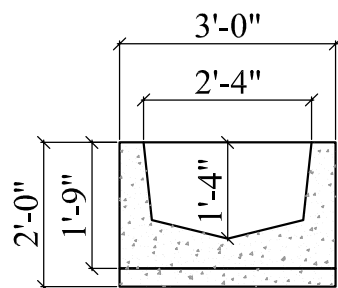
Top View

2" PVC DRAIN W/  
FEMALE THREADED  
ADAPTOR EACH END



FrontView

2" PVC DRAIN W/  
FEMALE THREADED  
ADAPTOR EACH END



SectionView

NOTE:  
ENDS CAN BE MODIFIED TO BE OPEN  
ENDED. ONE SIDE OR BOTH TO BE SET  
TOGETHER FOR LONGER FEEDER.

## CATTLE FEEDER "V" TYPE

Approx. weight = 3,000 lbs



CALLAWAY, VIRGINIA  
PH: 540-483-5944

"V" Feeder

Date  
Jan 15, 2018

Scale  
Not To Scale