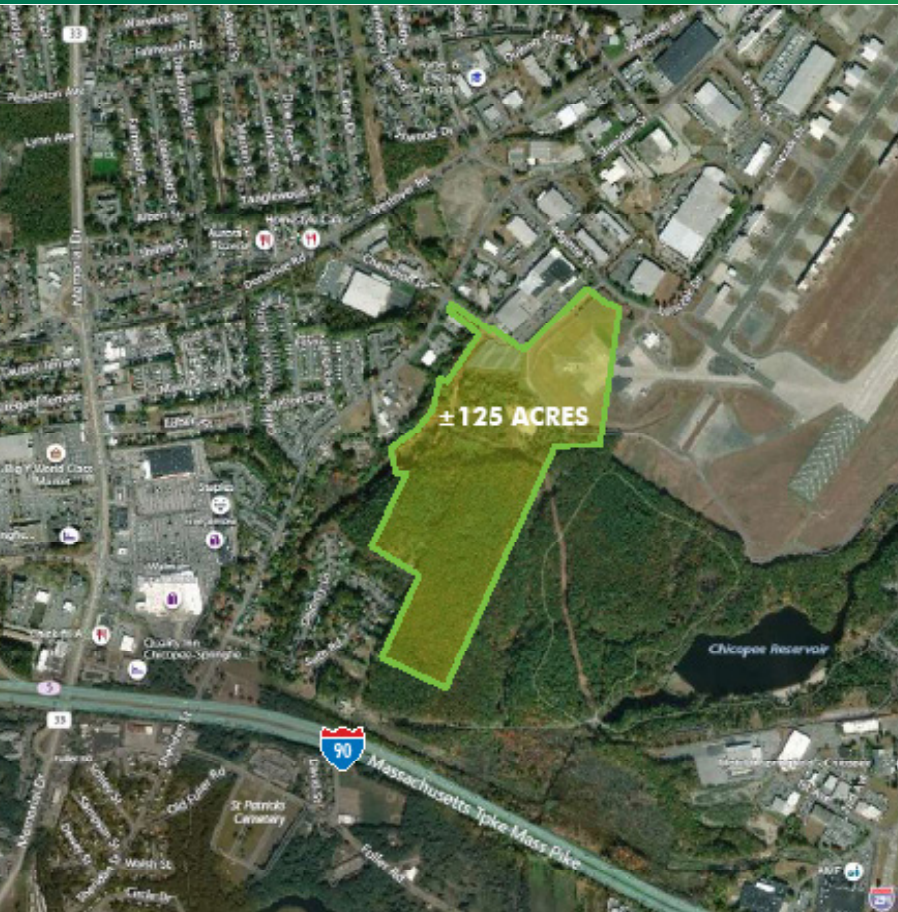


500,000-1,400,000 MSF
BUILD-TO-SUIT



DISTANCE TO:

- + Mass Pike/I-90: 1.5 miles
- + Interstate 91: 4.5 miles
- + Hartford: 34.4 miles
- + Albany, NY: 84 miles
- + Boston, MA: 88.9 miles
- + New York City, NY: 120 miles

CONTACT US

JOHN REED, SIOR
Senior Vice President
+1 413 732 9150
+1 860 987 4788
john.reed@cbre.com

JACK REED
Associate
+1 860 987 4708
jack.reed@cbre.com

© 2019 CBRE, Inc. This information has been obtained from sources believed reliable. We have not verified it and make no guarantee, warranty or representation about it. Any projections, opinions, assumptions or estimates used are for example only and do not represent the current or future performance of the property. You and your advisors should conduct a careful, independent investigation of the property to determine to your satisfaction the suitability of the property for your needs. Photos herein are the property of their respective owners and use of these images without the express written consent of the owner is prohibited.

FOR LEASE

BUILD-TO-SUIT

500,000-1,400,000 MSF

AIRPARK SOUTH

MASS PIKE, I-90/I-91 AIR CARGO SUPPORTED LOGISTICS CENTER

Chicopee, MA

WAREHOUSE/DISTRIBUTION INDUSTRIAL BUILDING

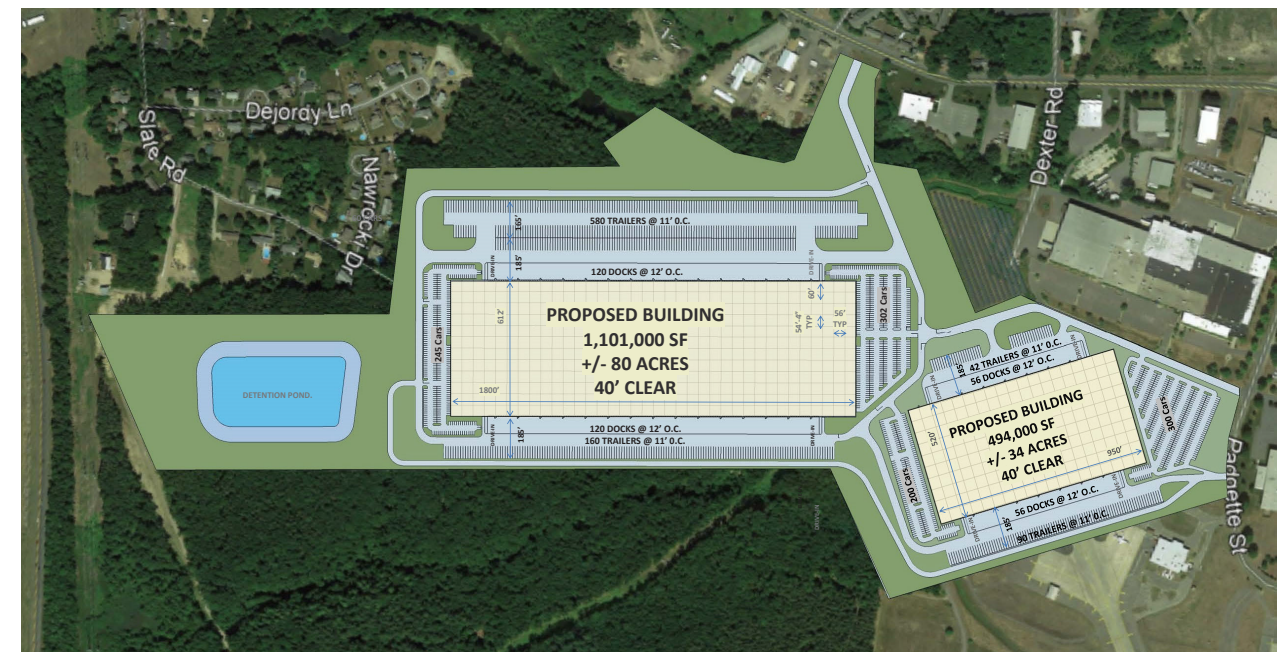


500,000-1,400,000 MSF BUILD-TO-SUIT

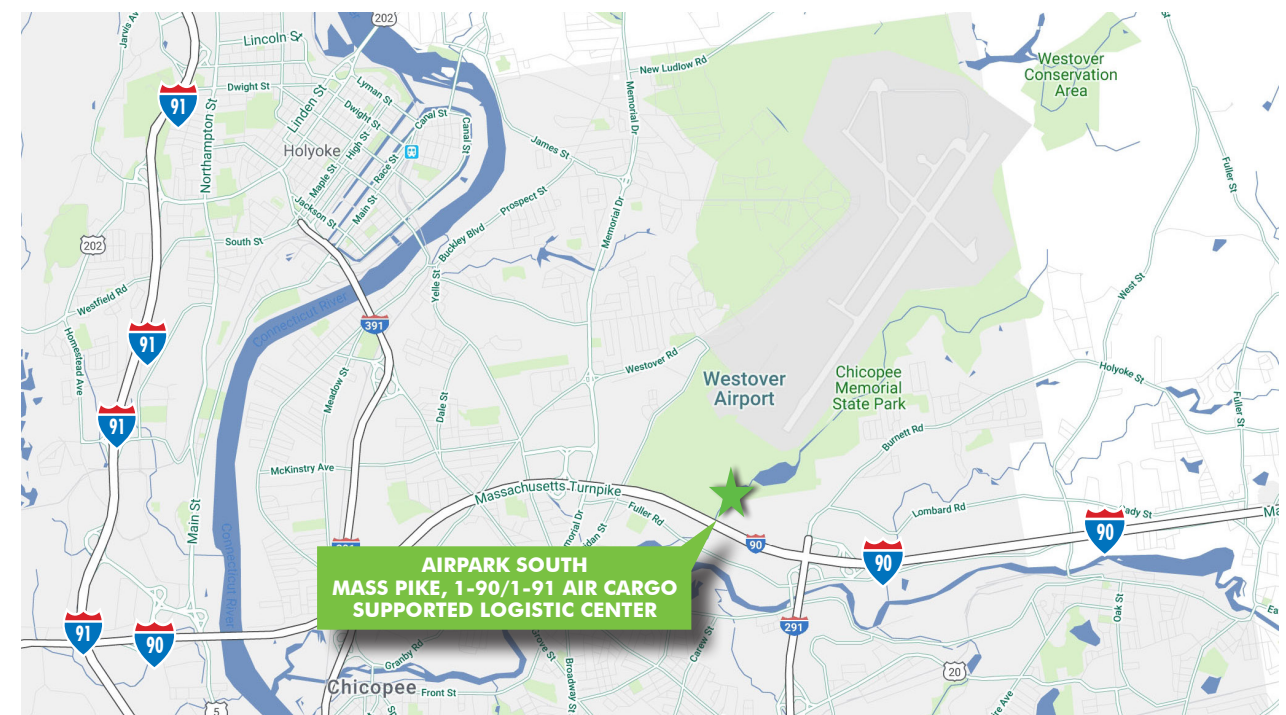
FOR LEASE
AIRPARK SOUTH
MASS PIKE, I-90/1-91 AIR CARGO SUPPORTED LOGISTICS CENTER
Chicopee, MA



SITE PLAN



LOCATION MAP



PROPERTY SPECIFICATIONS

- + **Build-to-Suit:** 500,000-1,400,000 MSF warehouse campus distribution industrial building/food grade and cold storage
- + Located in a 3.5 MSF mixed-used industrial/office park
- + **Land:** ±125 acres
- + **Possible Layout:** 2.0 MSF building
- + **Sprinkler:** ESFR system
- + **Column Spacing:** 54'-3" x 56' typical; 54'-4" x 60" speed bay
- + **High Bay:** 65' clear permitted
- + **Direct Air-Side:** Additional facilities available
- + **Zoning:** IPUD
- + **Power:** Dual substation feeds, 16000 Amps, 277/480 Volts, 3-Phase
- + **Electric:** Chicopee Electric Company
- + **Water/Sewer:** City of Chicopee
- + **Gas:** Columbia Gas
- + **Corporate Neighbors:** FedEx, Yankee Candle, Cardinal Health, Big Y and Westover airport
- + **Aircraft Loading/runway access:** 500' from building group 6 aircraft, Westover Airport
- + **Location:**
 - Interstate 90: 1.5 miles
 - Interstate 91: 4.5 miles