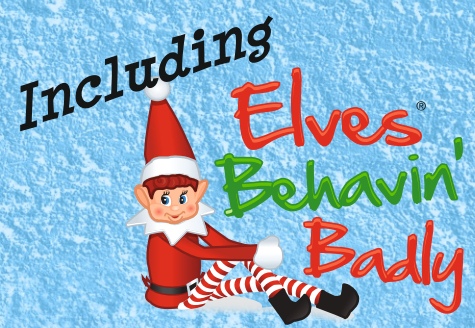


Santa comes to Fleetwood



Wyre & Fylde Santa Tours

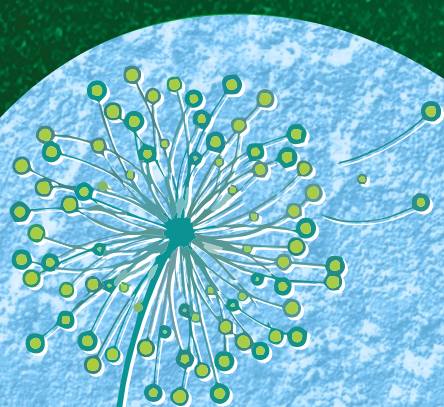
Raising vital funds for Trinity Hospice & Brian House

Tuesday 10th December 6pm

| | |
|------------------|----------------|
| West Way | Duddon Ave |
| Rossall Gate | Wansbeck Ave |
| Southgate | Chatsworth Ave |
| The Strand | Buttermere Ave |
| Ullswater Ave | Lazenby Ave |
| Larkholme Parade | Marine Parade |
| Northway | Roundway |
| Middleton Ave | Plymouth Ave |

Trinity Hospice provide compassionate care on the journey towards the end of life for those who live in Blackpool, Wyre and Fylde, touching the lives of around 8,000 people each year.

Brian House - the only children's hospice on the Fylde Coast, a local charity that provides vital respite and end of life care for local children in a home from home environment for children and families who need it.



Trinity Hospice

Compassion and care




Brian House
Children's Hospice

Registered
Charity No. 511009

DONATE NOW WITH
JustGiving



www.santacometotown.com

 Santa Comes to Fleetwood  @santatoursfylde